



AUGAT MELCO PRODUCTS

A part of the growing Augat Communications Group

TCI Library www.telephonecollectors.info

Introduction

As part of the growing Augat Communications Group, Melco continues to support the communications industry with high quality, cost-effective customer premise equipment.

Products specially designed for the small business market include key system intercoms and enhancements, small communication systems, line status monitors, paging units and line hold circuits. For the dynamic telemarketing industry, Melco offers a complete line of service observing systems with features and value unmatched in the industry. Melco off-premise equipment, lamp extenders and telephone amplifiers are among the diverse products designed to help you meet those special application requirements. And, responding to current market needs in local area network applications, Melco has recently added a line of wire management systems.

With a commitment of over 15 years to the telephone industry, Melco makes products you can install with confidence. All are covered by a solid warranty service policy.

In this catalog, you'll find brief descriptions of each product currently in Melco's product line. For more detailed information on any of these products, contact your Melco Regional Manager or Melco's Customer Service Department.

Table of Contents

SERVICE OBSERVING SYSTEMS	Page 1
SINGLE-LINK COMBINATION INTERCOMS	Page 2
TWO-LINK INTERCOMS	Page 2
INTERCOM MOUNTING PANELS	Page 3
INTERCOM EXPANDERS	Page 3
AUXILIARY INTERCOM EQUIPMENT	Page 3
COMMUNICATION SYSTEMS	Page 4
LINE HOLD UNITS	Page 4
PAGING UNITS	Page 5-6
LAMP EXTENDERS	Page 6
TELEPHONE AMPLIFIERS	Page 6
OFF-PREMISE EQUIPMENT	Page 7
WIRE MANAGEMENT PRODUCTS	Page 7
OTHER MELCO PRODUCTS	Page 8-9

Melco Service Observing Systems

- Allows monitoring of two-way telephone conversations—ideal for telemarketing applications or for training customer service or telephone sales representatives.
- Nothing is heard by the line being observed.
- Lines to be observed are easily dial-accessed from a telephone used as an observer's station.

- Optional Melco LSM-30 or LSM-30A Line Status Monitors work with some systems to allow easy identification of line status before accessing lines for observation.
- Work with Central Office, PABX, Centrex, standard key system and most electronic key system lines.



KMT-330 Teletrainer, Service Observing/Talk Assist Unit: Allows for observing and assisting up to 30 lines or stations. Features a built-in talk assist function which is dial-accessed. The system can be expanded to 60 or 90 lines by adding KMX-333B Expanders.



KM-308 Service Observing Unit: Provides an economical system for observation of 8 lines or stations. Ideal for small installations or for larger applications in which more than one observer's station is required.



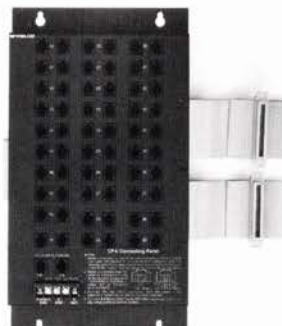
KMT-300 Service Observing/Talk Assist Unit: An expandable 30-line system which provides a built-in talk assist feature that is automatically activated any time a line is being observed. The KMT-300 also features a flexible numbering plan which allows lines or stations to be assigned selected two-digit code arrangements.



KM-301 Service Observing Unit: Allows for observation of an individual central office, PABX or key system line (or station). A modular jack is provided for connections to power and to the observed station or line, and standard jacks are provided for connection to a telephone headset. The modular design of the KM-301 promotes flexibility for observing individual lines or stations as desired.



KM-330 Service Observing Unit: Allows for observation of up to 30 lines or stations, and can be expanded to 60 or 90 lines with KMX-333B Expanders.



CP-6 and CP-8 Connecting Panels: Prewired connecting panels which eliminate hard wiring and connecting blocks when installing a Melco Service Observing System with a modular key system or PABX. The CP-6 is for connections to systems with 6-pin connectors, and the CP-8 for connections to systems with 8-pin connectors.



KMX-333B Service Observing Expander: Expands the line or station capacity of the KMT-330, KMT-300 or KM-330B. One KMX-333B increases the capacity to 60 and two increase it to 90.

Melco Single Link Combination Intercoms

- Provides intercom capability for 1A1 and 1A2 type key systems—can be used with tone, rotary or a combination of both tone and rotary dialing key telephones.
- Provides station lamp control, bell (or buzzer) signaling and ringback tone.
- Can be used to directly replace existing Melco tone and/or rotary dialing intercoms without changing cabling, wiring or station numbers.
- Allows for quick installation in an apparatus cabinet, relay rack or on the wall—optional Melco mounting panels can be used to reduce interconnecting time.
- Cable plugs on all except the nine-station intercoms provide convenient connections to A25B or equivalent connector cables.
- Digital circuitry provides instantaneous selective signaling and high reliability.



MC-9 Combination Nine Station Modular Intercom: A nine-station compact intercom designed to be extremely economical in small installations. A built-in 2 x 10 connecting block allows for quick and convenient station and power connections.



KC-19 Combination Nineteen Station Intercom: Provides a 19-station intercom system which may be easily replaced with the 37-station KC-37 if increased intercom station capacity becomes necessary.



KC-10X Combination Ten Station Expandable Intercom: Provides a ten-station system that can easily be expanded to a 30, 60 or 90-station system by adding KX-30 Intercom Expanders.



KC-37 Combination Thirty-seven Station Intercom: Ideal for larger key system installations, the KC-37 provides for up to 37 intercom stations. Can be used to replace the KC-19 intercom with minimal changes.

Melco Two-Link Intercoms

- Provides two-link intercom capability for 1A1 and 1A2 type key systems—operates from tone, rotary or a combination of both tone and rotary dialing key telephones.



KL-19A Two-Link Intercom System: Equips up to 19 stations with two talking paths, call progress tones, flashing lamps, interrupted ringing and conferencing. One of the talking paths is private, the other is common. Both links and all stations are accessed from one telephone pickup key at each station. The system can easily be adapted for paging, and system capacity can be expanded to 38 stations by adding a Melco KX-38 Intercom Expander.

Melco Intercom Mounting Panels

- Provides permanent interconnecting wiring through a printed circuit board.



M-19 Modular Panel: Saves time on Melco 19-station intercom installations. Mounts on a relay rack or backboard and can be connected to the power supply with the CA-7 optional power cable assembly.

- Optional power cable assemblies provide convenient plug-in connections to W.E. Co. 79B, 90B or similar modular power supplies.



M-37 Modular Panel: Provides rapid mounting for Melco 10, 19 and 37-station intercoms. Minimum wiring changes are necessary when a 10 or 19-station intercom is replaced with a larger one. An optional plug-ended power cable, the CA-12, is available for connections with a modular power supply.

Melco Intercom Expanders



KX-30 Intercom Expander: Expands the station capacity of the KC-10X Combination Intercom in 30-station increments up to 90 stations. One KX-30 expands a ten-station system to 30 stations, two expand it to 60 stations and three expand it to 90.



KX-38 Intercom Expander: Expands the station capacity of the KL-19A Two-Link Intercom System from 19 stations to 38 stations. A 25-pair cable provides for convenient connections between the two units.

Melco Auxiliary Intercom Equipment



M-266A Flashing Lamp Unit: Adds flashing lamp and repeated ringing features to a called intercom station. The lamp flashes at the called intercom station until the call is answered. One M-266A equips up to 10 stations. A furnished cable plug provides for easy connection through an A25B or equivalent 25-pair connector cable.

Melco Communication Systems



MAX-824 Communication System: A microprocessor-controlled system designed for small business or hotel/motel applications. The MAX-824 provides 8 private intercom talk paths and a capacity of 8 network lines and 24 stations. The system operates from standard single-line telephones and requires only one cable pair to each station for system operation. An attendant's console is optional.



Attendant's Console for MAX-824: Streamlines call supervision and call routing functions with such features as audible signaling of incoming calls, station busy lamp field, digital clock, night transfer switch, network line access buttons with status lamps, and hold, transfer, page and release buttons. A 25-pair plug provides for all required connections to the MAX-824 and a modular jack provides connections to the attendant's telephone.



CA-25B Console Cable: A 25-pair cable assembly, available in 24-foot lengths, for connections between the attendant's console and the MAX-824 system.

Melco Line Hold Circuits

- Provides the HOLD feature for single-line telephones.
- Ideal for homes, small businesses or telephones on PABX lines.



S-321 Single Line Hold: Places a call on hold when the S-321 button is pressed and the telephone handset is placed on-hook. A red lamp (LED) lights to indicate that the call is on hold. The call can be resumed at any telephone on the same premises including the original one. The unit easily connects to internal telephone wires without modifications to the telephone instrument.



S-321M Modular Single Line Hold (TeleHold): Designed for single-line modular telephones, the S-321M is user-installable and is individually packaged for retail display. Connections are made through a furnished T-adaptor which is plugged into the modular telephone jack. The S-321M operates in the same manner as the S-321.

Melco Paging Units

Intercom Paging Units

- Provides low-cost, reliable paging from key system intercoms.



KA-380 Paging Access Unit: Provides paging access to an external amplifier. The KA-380 has background music input, optional attention tone and is easy to mount and connect.

- Any station user may easily page by pressing the intercom key and dialing the assigned paging access number.



KT-363 Paging Amplifier: Provides access to a paging area through a 10-watt amplifier. The KT-363 has access circuitry, volume control, background music input and 8-ohm output impedance to speakers.



KA-384 Four Area Paging Access Unit: Provides access to four paging areas which may be accessed separately or simultaneously. Only one amplifier is required for paging, and a second if background music is desired. Features include optional call attention tone, background music input and spare contacts for control of auxiliary equipment.



KT-364 Four Area Pager: Provides paging capability for one to four areas by dial accessing the four 5-watt amplifiers individually or in combinations. Features access circuitry, volume control, visual busy indication, background music input and 8-ohm output impedance.

Other Paging Units



NEW

DAS-100 Distributive Amplifier Speaker: A versatile, self-contained paging unit with a built-in speaker and amplifier. Can be used on its own for single area paging, or with a telephone for call announce/intercom operation. When used with a telephone, a paged party may pick up the telephone and be directly connected with the paging initiator. The DAS-100 is compatible with almost all types of telephone systems and is designed for desktop or wall-mount use. Features include modular connections, background music input, volume control and attention tone.



KA-390 Direct Paging Access Unit: Provides direct access to a paging amplifier from any industry standard single line or key telephone instrument. Talk battery is furnished to the paging station. When using a key telephone, a pickup key provides access to the paging amplifier. The KA-390 provides a background music input, a momentary call attention tone option, and two sets of relay contacts for functions such as line lamp control. The versatile KA-390 can also be used to provide battery feed for a manual intercom.

Melco Paging Units (cont.)



PA-200A Paging Access Unit: Provides dial-access to an amplifier through a PABX station. Paging time is adjustable between 5 and 25 seconds. Momentary call attention tone and background music are optional. Compatible with the MAX-824 Communication System, the PA-200A operates from —24 or —48 volt battery and mounts on a relay rack or backboard.

A new model, the PA-200B, is available for C.O. and Centrex applications. The PA-200B features release options including CPC (Calling Party Control) disconnect.



PA-400 Four-Area PABX Paging Access Unit: Provides paging access through a PABX or Centrex Station to up to four paging areas which may be accessed separately or simultaneously. Any station user can access the paging amplifiers by dialing the assigned access code. Call attention tone and background music are optional. The PA-400 provides 600 ohm impedance and is compatible with Melco's MAX-824 Communication System.

Melco Lamp Extenders

- Provides output power for twenty ten-volt lamps in each of the six line lamp circuits when lamp signal is received from the line card.
- Boosts power where long lamp leads reduce lamp intensity.

- Connects to an A25B or equivalent connector cable and mounts in a key system cabinet, relay rack or on the wall.



KT-631 Lamp Extender: Provides complete auxiliary lamp power supply with six lamp circuits that can power 20 lamps each. A phase reversal indication (LED) and toggle switch help minimize power consumption.



KT-63 Lamp Extender: Provides the same operation as the KT-631 when extension for more than six lamp circuits is required. The KT-63 operates on power from the KT-631 or from other auxiliary 10-volt AC lamp supplies.

Melco Telephone Amplifiers



S-11 Telephone Amplifier: Amplifies voice signals (up to 21dBm) at the receiver of a telephone. It is useful to people with hearing difficulties or who use telephones in a noisy area. The S-11 is equipped with an adjustable volume control and mounts on the side or front of most telephones. Connections to internal telephone wiring are easily made without modifications to the telephone instrument.



S-11M Modular Telephone Amplifier (Magniphone): A user-installable amplifier which can be used with any single-line modular telephone. Connects to the telephone in just a few seconds by plugging the handset cord into the S-11M jack and inserting the S-11M plug into the modular telephone jack. Individually packaged for retail display, the S-11M operates in the same manner as the S-11.

Melco Off-Premise Equipment



M-62 A-1 Line Adapter: Provides an additional switching function from the lineswitch of any standard telephone. It can be used for key system "A" relay control, station busy lamp operation or any other off-hook indication. The M-62 installs inside the telephone and requires no mounting.



S64-5RA Loop Detector: Provides five loop sensing circuits which can be used in the same applications as the S64-1. The S64-5RA is contained in an aluminum housing with a plug for convenient connections to a 25-pair connector cable.



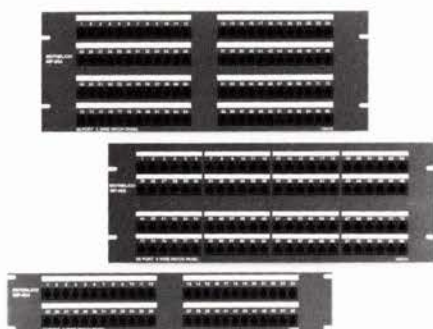
S64-1 Loop Detector: A multi-application loop detector that can be used to provide A and A1 control or to activate special features that require an off-hook input signal such as a busy lamp field. The S64-1 can be installed anywhere the line appears.



S-71 Off-Premise Ringing Adapter: Provides for ringing an off-premise extension of a key system intercom without using an additional cable pair. The S-71 mounts on a backboard.

Melco Wire Management Products

- Helps simplify and organize wiring schemes for voice or data systems—cable configurations can be drastically reduced and consolidated.
- Allows for quick and easy changes to wiring arrangements through modular connections.



- Internal printed circuit board design increases passive quality and keeps crosstalk to a minimum.

NEW

Modular Patch Panels: Convert 25-pair cable connections to simple modular RJ-11 or RJ-45 jack connections. A wide range of models is available including 24, 48 and 96-port versions each with either four, six or eight-wire modular connectors. For efficient wire identification, boldly silkscreened numbers designate each modular connector, and an easy-to-write-on area is provided for further identification. In addition, 25-pair connectors on the rear of the panels are silkscreened with the corresponding connector numbers. Each panel includes wire management harnesses to simplify management of the modular cords and Z-brackets for stable mounting of the 25-pair connector cables.

NEW

BNC-32 Bulkhead Patch Panel: A 32-port bulkhead panel for simplifying coaxial connections. Constructed of insulated plexiglas with a metal frame, the panel is equipped with two rows of sixteen BNC connectors. The connectors are designated with silkscreened numbers (0-31) for ready identification of ports.

Other Melco Products



LSM-30 Line Status Monitor: Has 30 LEDs which light to indicate when a line is in use. The LSM-30 consists of a control unit and a display unit which connect with just one or two-pair cable—making it ideal for off-premise installations! The LSM-30 works with almost any PABX or key system, and can be used to enhance Melco Service Observing System installations.



NEW
LSM-30A Line Status Monitor: Operates in the same manner as the LSM-30 and, in addition, features a common audible (alert) tone which sounds whenever a line or station is receiving ringing. A switch on the front allows for turning off or adjusting the volume of the alert tone. The system is compatible with all central office switching systems including #5ESS.



MPS-120 Power Supply: A U.L. listed, high performance power supply which can be used with Melco Service Observing Systems and much of Melco's product line. Provides filtered and regulated 24V DC output at one amp current, and simply plugs into a standard 120V AC grounded three-wire outlet.



RA-330 Remote Access Unit: Allows for remotely accessing lines or stations of a PABX, Centrex or key system. A line is remotely accessed by dialing an outside line number assigned to the RA-330, dialing an assignable security code, waiting for acknowledgment tone, and dialing the access code for the desired line or station. The unit can also be used to remotely observe lines or stations of a Melco Service Observing System.



M-205 Ringdown Circuit: Provides the interface for a direct line between two locations for two or more telephone stations. When one station lifts the receiver, the M-205 provides bridged ringing to the other station. The M-205 also provides interrupted ringing and ringback tone for both stations. The key system power supply furnishes power for talking, ringing and lamp signaling. The M-205 requires only one cable pair between stations and mounts easily in an apparatus cabinet, in a relay rack or on a wall.



NEW
S-10 Common Audible Unit: A multi-application relay circuit that can be used to activate auxiliary equipment upon detection of ringing voltage. It may be used for up to ten lines, making it especially ideal for common audible applications, night bell operation or other situations in which it is desirable for incoming ringing on multiple lines to sound at a single bell.



NEW
MPS-100 Power Supply: A general purpose power supply designed for use with the Melco LSM-30 or LSM-30A Line Status Monitors or products with similar power requirements. The MPS-100 is U.L. listed and provides 10 volts AC power at a maximum of 1.5 Ampere. It operates from 60 Hertz, 115 Volts AC power.



S-73 Auxiliary Relay Circuit: A general purpose relay circuit which can be used for various transfer functions. The relay operates from either a ground or battery input of 18 to 56V DC, and an LED lights when the relay is operated.

Other Melco Products (cont.)



S-74 Ringing Detector: A multi-application ringing detector that operates a relay circuit when ringing voltage is present. It can be used to activate an auxiliary visual or audible device, or to provide bridged ringing for an off-premise extension. The S-74 mounts on a backboard, connects from screw terminals and operates from either a 15 to 18V AC wall pack or a standard key system power supply.



NEW SD-1200 Simplex Data Transceiver: Transmits and receives 1200 baud simplex data to a remote location over a private line (dry pair). It will also accept and deliver 20 milliamp current loop data, making it ideal for extending the loop length of the Melco LSM-30A Line Status Monitor, or similar products. The unit is used to either transmit or receive data—in a typical installation one is used as a transmitter and one as a receiver.



NEW TRX300 Ethernet Transceiver: Allows for transmitting and receiving data packets through Ethernet Local Area Networks. Stinger or N-type connectors are available for use with standard Ethernet coaxial cable, and BCN connectors are available for "Thin net" applications. LED indicators (power, receive data, transmit data, and collision detect) allow network and station activity monitoring and assure proper equipment installation and operation. The unit is fully compatible with IEEE 802.3 and Ethernet V2.0 network standards.

AUGAT MELCO

2414 S.W. Andover Street

Post Office Box 1110

Seattle, Washington 98111

(206) 932-8428

TWX: 910-443-3040

FAX: 206-938-8850
