

315A MOUNTING SHELF

CONTENTS

	Page
1. GENERAL	1
2. SPECIFICATIONS	1
3. INSPECTION	2
4. MOUNTING	2
5. INSTALLER CONNECTIONS	2
6. TESTING	2

1. GENERAL

1.1 This section provides general description and installation for the San/Bar 315A Mounting Shelf. The SB 315A provides mounting for the San/Bar 4450B Delay Transfer/Message Waiting Card or the 4451A Line Transfer Card. Refer to the Circuit Description (CD-4450-000 or CD-4451-000) for complete installation connections.

1.2 The SB 315A Mounting Shelf is a completely prewired card cage for plug-in mounting of up to twelve SB 4450B or SB 4451A Cards. The SB 315A may be installed in any standard 23-inch wide panel or rack. All signal connections to the shelf enter through standard 50-pin telephone connectors. Power connections are to screw terminals and are completely fused.

2. SPECIFICATIONS

2.1 List of applicable drawings:

- (a) Assembly Drawing No. ED-0315-000 (Fig. 2)
- (b) Schematic Diagram No. SD-0315-000 (Fig. 3)
- (c) Bill of Material No. BM-0315-000

2.2 Electrical Characteristics (W/SB4450B Cards)

(a) Input Power:

- 24 VDC B-Battery (2A Fuse)
- 10 VAC Lamp Voltage (2A Fuse)
- 105 VAC Ring Voltage (1/2A Fuse)
- Interrupted Ring Voltage, RN (1/2A Fuse)

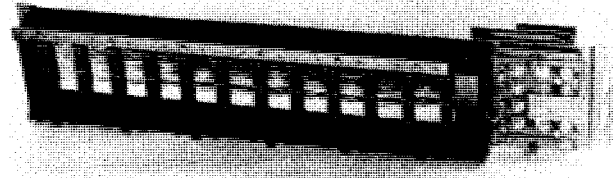


Fig. 1 315A Mounting Shelf

(b) Operating Environment:

Temperature—0°C to 50°C
Humidity—0 to 90%

(c) Independent Circuits:

Up to 12 Card positions, providing independent delay call transfer and message waiting or Line Transfer functions.

(d) Ringing Options:

Two basic options are provided through the use of Option Plug DP-0315-100, supplied with the unit.

- LR—Line Ringing, C.O. (Remove plug)
- RC—Local Ringing (Install plug in J16)

2.3 Physical Characteristics

(a) Overall Dimensions:

4-3/8" H x 23" W x 4-1/2" D

(b) Rear Mounting Depth:

2-3/4" max. from mounting surface, including allowance for cabling.

(c) Front Mounting Depth:

5-1/4" max. from mounting surface, including allowance for cards.

(d) Mounting Holes:

Two slotted mounting holes each side, 22-5/16" apart (See Fig. 2)

- (e) Card Cage: Equipped with 12 standard 18-pin connectors for 4" plug-in cards. A single locking bar provides card holddown.
- (f) Power Input Terminal:
#8-32 hex nut and washers for use with lugs or direct wire connections on the front, or #6 terminal lug or solder connections on the rear.
- (g) Signal Connectors:
Four standard 50-pin telephone connectors provide the interface for the signal functions (See Fig. 2). The connectors are mounted in back of the unit for rear cable entry.
- (h) Weight: 4 Lbs. without cards

3. INSPECTION

Inspect the unit thoroughly as soon as possible after delivery. Visually inspect for broken and loose wires, or card cage damage. If any part of the unit has been damaged in transit, report the extent of damage to the transportation company immediately.

4. MOUNTING

The SB 315A Mounting Shelf is designed for standard 23" rack or apparatus mounting fixtures such as the WE 16C wall mount apparatus fixture. The mounting shelf has mounting flanges with two slotted holes on each side. The slotted holes allow maximum flexibility in positioning of the unit up or down relative to other shelves. Because of the unit's light weight, only four mounting screws are needed and may be positioned anywhere in the slots.

The cable interface is designed for rear panel entry from the right side. If installing in a hinged apparatus mounting, the equipment gate should swing out to the right for ease of cable entry.

5. INSTALLER CONNECTIONS

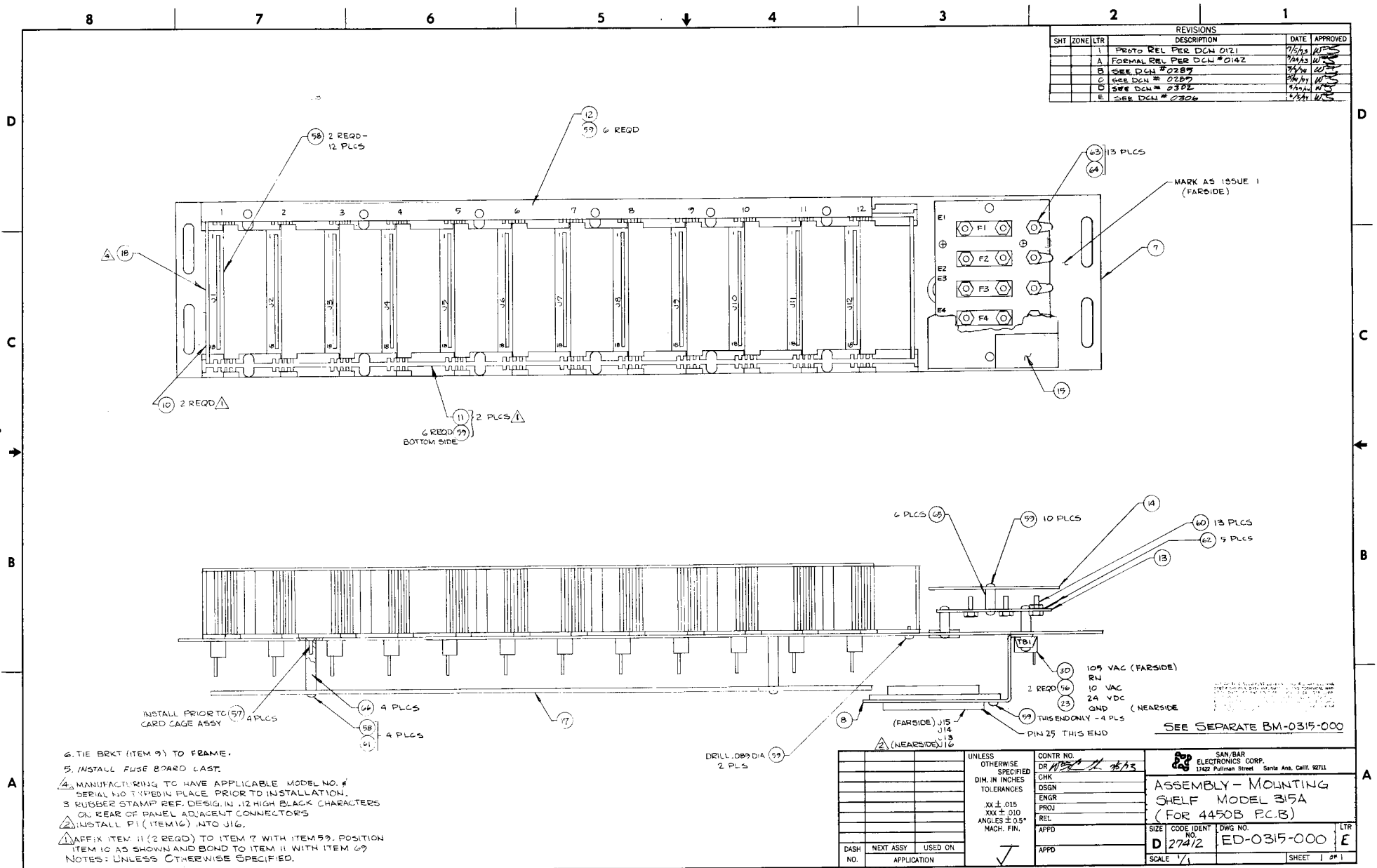
The SB 315A Mounting Shelf is factory wired for SB 4450B and SB 4451A cards. All signal connections to the cards are through three or four (depending on ringing option) standard telephone connectors at the rear of the unit. No installer wiring or strapping internal to the shelf is required. Refer to Schematic Drawing (Fig. 3) for complete pin assignments and ringing option connections. Also, refer to the circuit descriptions of the SB 4450B and SB 4451A Card (CD-4450-000 and CD-4451-000) for installer wiring of the signal functions that connect to the line card and station apparatus.

6. TESTING

6.1 If trouble is encountered with system operation in the SB 315A Mounting Shelf, check that all installer connections have been made properly. Also check the power connections and fuses. Refer to the SB 4450B and SB 4451A circuit descriptions for testing of the card. The SB 315A contains no electrical components that are normally considered subject to failure. However, possible wire breakage or poor wire terminations may be verified using normal continuity checking procedures with a standard multimeter (Simpson 263 or equivalent).

6.2 All San/Bar products are warranted for a period of one year from the date of purchase. If trouble is encountered with the SB 315A, return the unit to San/Bar Corporation, 17422 Pullman St., Santa Ana, California 92711. For technical assistance call (714) 546-6500.

Figure 2



REVISIONS				
SHT	ZONE	DESCRIPTION	DATE	APPROVED
1		PROTO REL PER DCN 0121	7/4/53	[Signature]
A		FORMAL REL PER DCN #0142	7/24/53	[Signature]
B		SEE DCN #0287	8/26/53	[Signature]
C		SEE DCN #0287	9/16/53	[Signature]
D		SEE DCN #0302	9/22/53	[Signature]
E		SEE DCN #0304	10/	

REV	DATE	BY	REVISIONS
1	10/15/78	WJL	REVISIONS
2	10/15/78	WJL	PERF. DIAL 0121
3	10/15/78	WJL	FORMAL RELEASE PER DOKTORZ
4	10/15/78	WJL	REVISED RES. DCM # 0197
5	10/15/78	WJL	SAF. DCM # 0200
6	10/15/78	WJL	SAF. DCM # 0205

LINE #	DESCRIPTION	LINE #	DESCRIPTION
LINE 1	UJ-1 VIO/WHT	LINE 3	UJ-13 VIO/WHT
LINE 2	UJ-2 VIO/WHT	LINE 4	UJ-14 VIO/WHT
LINE 3	UJ-3 VIO/WHT	LINE 5	UJ-15 VIO/WHT
LINE 4	UJ-4 VIO/WHT	LINE 6	UJ-16 VIO/WHT
LINE 5	UJ-5 VIO/WHT	LINE 7	UJ-17 VIO/WHT
LINE 6	UJ-6 VIO/WHT	LINE 8	UJ-18 VIO/WHT
LINE 7	UJ-7 VIO/WHT	LINE 9	UJ-19 VIO/WHT
LINE 8	UJ-8 VIO/WHT	LINE 10	UJ-20 VIO/WHT
LINE 9	UJ-9 VIO/WHT	LINE 11	UJ-21 VIO/WHT
LINE 10	UJ-10 VIO/WHT	LINE 12	UJ-22 VIO/WHT

LINE #	DESCRIPTION	LINE #	DESCRIPTION
LINE 13	UJ-23 VIO/WHT	LINE 25	UJ-35 VIO/WHT
LINE 14	UJ-24 VIO/WHT	LINE 26	UJ-36 VIO/WHT
LINE 15	UJ-25 VIO/WHT	LINE 27	UJ-37 VIO/WHT
LINE 16	UJ-26 VIO/WHT	LINE 28	UJ-38 VIO/WHT
LINE 17	UJ-27 VIO/WHT	LINE 29	UJ-39 VIO/WHT
LINE 18	UJ-28 VIO/WHT	LINE 30	UJ-40 VIO/WHT
LINE 19	UJ-29 VIO/WHT	LINE 31	UJ-41 VIO/WHT
LINE 20	UJ-30 VIO/WHT	LINE 32	UJ-42 VIO/WHT
LINE 21	UJ-31 VIO/WHT	LINE 33	UJ-43 VIO/WHT
LINE 22	UJ-32 VIO/WHT	LINE 34	UJ-44 VIO/WHT
LINE 23	UJ-33 VIO/WHT	LINE 35	UJ-45 VIO/WHT
LINE 24	UJ-34 VIO/WHT	LINE 36	UJ-46 VIO/WHT

LINE #	DESCRIPTION	LINE #	DESCRIPTION
LINE 37	UJ-47 VIO/WHT	LINE 49	UJ-59 VIO/WHT
LINE 38	UJ-48 VIO/WHT	LINE 50	UJ-60 VIO/WHT
LINE 39	UJ-49 VIO/WHT	LINE 51	UJ-61 VIO/WHT
LINE 40	UJ-50 VIO/WHT	LINE 52	UJ-62 VIO/WHT
LINE 41	UJ-51 VIO/WHT	LINE 53	UJ-63 VIO/WHT
LINE 42	UJ-52 VIO/WHT	LINE 54	UJ-64 VIO/WHT
LINE 43	UJ-53 VIO/WHT	LINE 55	UJ-65 VIO/WHT
LINE 44	UJ-54 VIO/WHT	LINE 56	UJ-66 VIO/WHT
LINE 45	UJ-55 VIO/WHT	LINE 57	UJ-67 VIO/WHT
LINE 46	UJ-56 VIO/WHT	LINE 58	UJ-68 VIO/WHT
LINE 47	UJ-57 VIO/WHT	LINE 59	UJ-69 VIO/WHT
LINE 48	UJ-58 VIO/WHT	LINE 60	UJ-70 VIO/WHT

LINE #	DESCRIPTION	LINE #	DESCRIPTION
LINE 61	UJ-71 VIO/WHT	LINE 73	UJ-83 VIO/WHT
LINE 62	UJ-72 VIO/WHT	LINE 74	UJ-84 VIO/WHT
LINE 63	UJ-73 VIO/WHT	LINE 75	UJ-85 VIO/WHT
LINE 64	UJ-74 VIO/WHT	LINE 76	UJ-86 VIO/WHT
LINE 65	UJ-75 VIO/WHT	LINE 77	UJ-87 VIO/WHT
LINE 66	UJ-76 VIO/WHT	LINE 78	UJ-88 VIO/WHT
LINE 67	UJ-77 VIO/WHT	LINE 79	UJ-89 VIO/WHT
LINE 68	UJ-78 VIO/WHT	LINE 80	UJ-90 VIO/WHT
LINE 69	UJ-79 VIO/WHT	LINE 81	UJ-91 VIO/WHT
LINE 70	UJ-80 VIO/WHT	LINE 82	UJ-92 VIO/WHT
LINE 71	UJ-81 VIO/WHT	LINE 83	UJ-93 VIO/WHT
LINE 72	UJ-82 VIO/WHT	LINE 84	UJ-94 VIO/WHT



LINE #	DESCRIPTION	LINE #	DESCRIPTION
LINE 85	UJ-95 VIO/WHT	LINE 97	UJ-107 VIO/WHT
LINE 86	UJ-96 VIO/WHT	LINE 98	UJ-108 VIO/WHT
LINE 87	UJ-97 VIO/WHT	LINE 99	UJ-109 VIO/WHT
LINE 88	UJ-98 VIO/WHT	LINE 100	UJ-110 VIO/WHT
LINE 89	UJ-99 VIO/WHT	LINE 101	UJ-111 VIO/WHT
LINE 90	UJ-100 VIO/WHT	LINE 102	UJ-112 VIO/WHT
LINE 91	UJ-101 VIO/WHT	LINE 103	UJ-113 VIO/WHT
LINE 92	UJ-102 VIO/WHT	LINE 104	UJ-114 VIO/WHT
LINE 93	UJ-103 VIO/WHT	LINE 105	UJ-115 VIO/WHT
LINE 94	UJ-104 VIO/WHT	LINE 106	UJ-116 VIO/WHT

LINE #	DESCRIPTION	LINE #	DESCRIPTION
LINE 107	UJ-117 VIO/WHT	LINE 119	UJ-129 VIO/WHT
LINE 108	UJ-118 VIO/WHT	LINE 120	UJ-130 VIO/WHT
LINE 109	UJ-119 VIO/WHT	LINE 121	UJ-131 VIO/WHT
LINE 110	UJ-120 VIO/WHT	LINE 122	UJ-132 VIO/WHT
LINE 111	UJ-121 VIO/WHT	LINE 123	UJ-133 VIO/WHT
LINE 112	UJ-122 VIO/WHT	LINE 124	UJ-134 VIO/WHT
LINE 113	UJ-123 VIO/WHT	LINE 125	UJ-135 VIO/WHT
LINE 114	UJ-124 VIO/WHT	LINE 126	UJ-136 VIO/WHT
LINE 115	UJ-125 VIO/WHT	LINE 127	UJ-137 VIO/WHT
LINE 116	UJ-126 VIO/WHT	LINE 128	UJ-138 VIO/WHT

LINE #	DESCRIPTION	LINE #	DESCRIPTION
LINE 129	UJ-139 VIO/WHT	LINE 141	UJ-151 VIO/WHT
LINE 130	UJ-140 VIO/WHT	LINE 142	UJ-152 VIO/WHT
LINE 131	UJ-141 VIO/WHT	LINE 143	UJ-153 VIO/WHT
LINE 132	UJ-142 VIO/WHT	LINE 144	UJ-154 VIO/WHT
LINE 133	UJ-143 VIO/WHT	LINE 145	UJ-155 VIO/WHT
LINE 134	UJ-144 VIO/WHT	LINE 146	UJ-156 VIO/WHT
LINE 135	UJ-145 VIO/WHT	LINE 147	UJ-157 VIO/WHT
LINE 136	UJ-146 VIO/WHT	LINE 148	UJ-158 VIO/WHT
LINE 137	UJ-147 VIO/WHT	LINE 149	UJ-159 VIO/WHT
LINE 138	UJ-148 VIO/WHT	LINE 150	UJ-160 VIO/WHT

LINE #	DESCRIPTION	LINE #	DESCRIPTION
LINE 151	UJ-161 VIO/WHT	LINE 163	UJ-173 VIO/WHT
LINE 152	UJ-162 VIO/WHT	LINE 164	UJ-174 VIO/WHT
LINE 153	UJ-163 VIO/WHT	LINE 165	UJ-175 VIO/WHT
LINE 154	UJ-164 VIO/WHT	LINE 166	UJ-176 VIO/WHT
LINE 155	UJ-165 VIO/WHT	LINE 167	UJ-177 VIO/WHT
LINE 156	UJ-166 VIO/WHT	LINE 168	UJ-178 VIO/WHT
LINE 157	UJ-167 VIO/WHT	LINE 169	UJ-179 VIO/WHT
LINE 158	UJ-168 VIO/WHT	LINE 170	UJ-180 VIO/WHT
LINE 159	UJ-169 VIO/WHT	LINE 171	UJ-181 VIO/WHT
LINE 160	UJ-170 VIO/WHT	LINE 172	UJ-182 VIO/WHT

LINE #	DESCRIPTION	LINE #	DESCRIPTION
LINE 173	UJ-183 VIO/WHT	LINE 185	UJ-195 VIO/WHT
LINE 174	UJ-184 VIO/WHT	LINE 186	UJ-196 VIO/WHT
LINE 175	UJ-185 VIO/WHT	LINE 187	UJ-197 VIO/WHT
LINE 176	UJ-186 VIO/WHT	LINE 188	UJ-198 VIO/WHT
LINE 177	UJ-187 VIO/WHT	LINE 189	UJ-199 VIO/WHT
LINE 178	UJ-188 VIO/WHT	LINE 190	UJ-200 VIO/WHT
LINE 179	UJ-189 VIO/WHT	LINE 191	UJ-201 VIO/WHT
LINE 180	UJ-190 VIO/WHT	LINE 192	UJ-202 VIO/WHT
LINE 181	UJ-191 VIO/WHT	LINE 193	UJ-203 VIO/WHT
LINE 182	UJ-192 VIO/WHT	LINE 194	UJ-204 VIO/WHT

LINE #	DESCRIPTION	LINE #	DESCRIPTION
LINE 195	UJ-205 VIO/WHT	LINE 207	UJ-217 VIO/WHT
LINE 196	UJ-206 VIO/WHT	LINE 208	UJ-218 VIO/WHT
LINE 197	UJ-207 VIO/WHT	LINE 209	UJ-219 VIO/WHT
LINE 198	UJ-208 VIO/WHT	LINE 210	UJ-220 VIO/WHT
LINE 199	UJ-209 VIO/WHT	LINE 211	UJ-221 VIO/WHT
LINE 200	UJ-210 VIO/WHT	LINE 212	UJ-222 VIO/WHT
LINE 201	UJ-211 VIO/WHT	LINE 213	UJ-223 VIO/WHT
LINE 202	UJ-212 VIO/WHT	LINE 214	UJ-224 VIO/WHT
LINE 203	UJ-213 VIO/WHT	LINE 215	UJ-225 VIO/WHT
LINE 204	UJ-214 VIO/WHT	LINE 216	UJ-226 VIO/WHT

LINE #	DESCRIPTION	LINE #	DESCRIPTION
LINE 217	UJ-227 VIO/WHT	LINE 229	UJ-239 VIO/WHT
LINE 218	UJ-228 VIO/WHT	LINE 230	UJ-240 VIO/WHT
LINE 219	UJ-229 VIO/WHT	LINE 231	UJ-241 VIO/WHT
LINE 220	UJ-230 VIO/WHT	LINE 232	UJ-242 VIO/WHT
LINE 221	UJ-231 VIO/WHT	LINE 233	UJ-243 VIO/WHT
LINE 222	UJ-232 VIO/WHT	LINE 234	UJ-244 VIO/WHT
LINE 223	UJ-233 VIO/WHT	LINE 235	UJ-245 VIO/WHT
LINE 224	UJ-234 VIO/WHT	LINE 236	UJ-246 VIO/WHT
LINE 225	UJ-235 VIO/WHT	LINE 237	UJ-247 VIO/WHT
LINE 226	UJ-236 VIO/WHT	LINE 238	UJ-248 VIO/WHT

LINE #	DESCRIPTION	LINE #	DESCRIPTION
LINE 239	UJ-249 VIO/WHT	LINE 251	UJ-261 VIO/WHT
LINE 240	UJ-250 VIO/WHT	LINE 252	UJ-262 VIO/WHT
LINE 241	UJ-251 VIO/WHT	LINE 253	UJ-263 VIO/WHT
LINE 242	UJ-252 VIO/WHT	LINE 254	UJ-264 VIO/WHT
LINE 243	UJ-253 VIO/WHT	LINE 255	UJ-265 VIO/WHT
LINE 244	UJ-254 VIO/WHT	LINE 256	UJ-266 VIO/WHT
LINE 245	UJ-255 VIO/WHT	LINE 257	UJ-267 VIO/WHT
LINE 246	UJ-256 VIO/WHT	LINE 258	UJ-268 VIO/WHT
LINE 247	UJ-257 VIO/WHT	LINE 259	UJ-269 VIO/WHT
LINE 248	UJ-258 VIO/WHT	LINE 260	UJ-270 VIO/WHT

THE ASSIGNSMENTS FOR THIS SET ARE IDENTICAL TO THE LOCAL RANGING CHANNEL, RC. THE CO. RANGING CHANNEL, CA, IS THE PARENT THIS IS.

STEERING OPTIONS

RC	LOCAL RANGING	OPTIONAL PLUG IN
LA <td>CO. RANGING</td> <td>CONNECTIONS</td>	CO. RANGING	CONNECTIONS

NO.	DESCRIPTION	USED ON
1	NEXT ASSY	
2	APPLICATION	

UNLESS OTHERWISE SPECIFIED	COVER NO.
ALL DIMENSIONS IN INCHES	108
TOLERANCES	±0.015
FINISH	PER DRAWING
MARKING	PER DRAWING
WELDING	PER DRAWING

SCALE	DATE	DESIGNER	CHECKER
1/2" = 1"	10/15/78	WJL	WJL

SCHEMATIC C-12 CARD MOUNTING SHELF MODEL 0315

NO.	DESCRIPTION	USED ON
1	NEXT ASSY	
2	APPLICATION	

UNLESS OTHERWISE SPECIFIED	COVER NO.
ALL DIMENSIONS IN INCHES	108
TOLERANCES	±0.015
FINISH	PER DRAWING
MARKING	PER DRAWING
WELDING	PER DRAWING

SCALE	DATE	DESIGNER	CHECKER
1/2" = 1"	10/15/78	WJL	WJL

SCHEMATIC C-12 CARD MOUNTING SHELF MODEL 0315

NO.	DESCRIPTION	USED ON
1	NEXT ASSY	
2	APPLICATION	

Figure 3