

317A UNIVERSAL EQUIPMENT MOUNTING SHELF

CONTENTS		Page
1.	GENERAL	1
2.	SPECIFICATIONS	1
3.	INSPECTION	2
4.	MOUNTING	2
5.	INSTALLER CONNECTIONS	2
6.	TESTING	2

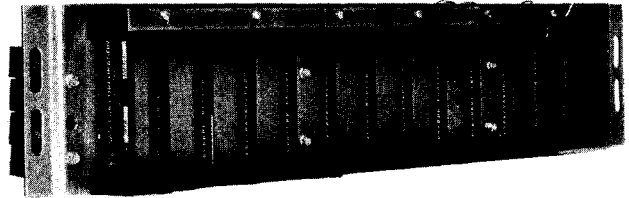


Fig. 1
 Universal Equipment Mounting Shelf

1. GENERAL

- 1.1 This section provides general description and installation for the San/Bar 317A Universal Equipment Mounting Shelf. The SB317A provides mounting for all standard 4" plug-in cards.
- 1.2 The SB317A Universal Equipment Mounting Shelf is a prewired card cage for mounting of up to twelve 18, 20 or 40 pin cards. All signal connections to the shelf enter through standard 50-pin telephone connectors. The 317A is designed for installation in a 23" wide panel or rack.
- 1.3 The 317A-1 provided the same features as the 317A, but with the addition of a 21 pin connector (unwired) for mounting a standard 12 line capacity mechanical interrupter.
- 1.4 For applications that utilize only a small portion of the available connections, the 317A-2 version is unwired with the 25 pair interface omitted. Otherwise, it is the same as the 317A.
- 1.5 The 317A-3 provides the same features as the 317A-2, but with the addition of a 21-pin connector (unwired) for mounting a standard 12-line capacity mechanical interrupter.
- 1.6 The 317A-4 is a 25 pair interface kit (four 25 pair connectors) available for application with the 317A-2 or -3.

2. SPECIFICATIONS

- 2.1 List of Applicable Drawings:
 - (a) Assembly Drawing No. ED-0317-000 (Fig. 3)
 - (b) Schematic Drawing No. SD-0317-000 (Fig. 4) not applicable to SB317A-2 and -3
 - (c) Bill of Material No. BM-0317-000
- 2.2 Electrical Characteristics
 - (a) Operating Environment:
 Temperature—0°C to +50°C
 Humidity—up to 90%
 - (b) Contact Power Rating:
 4 Amps @ 250 VRMS
- 2.3 Physical Characteristics
 - (a) Overall Dimensions:
 4-3/8"H x 23"W x 4-7/8"D
 - (b) Rear Mounting Depth:
 3" max. from mounting surface, including allowance for cabling.
 - (c) Front Mounting Depth:
 5-1/2" max. from mounting surface, including allowance for cards.
 - (d) Mounting Holes:
 Two vertically slotted mounting holes on each side, 22-5/16" apart. (See Fig. 3).
 - (e) Card Cage: Equipped with 12 standard

.150 center 40-pin connectors for 4" plug-in cards (actual card height is 3-1/2"). Cards with 18, 20 or 40 pins may be installed in the 40 pin connectors. A single locking bar provides card hold-down.

- (f) **Signal Connectors:**
Twelve standard 50-pin telephone connectors, with individual retaining brackets, provide the interface to the signal functions of each card. (See Fig. 3)
- (g) **Interrupter Connector (317A-1) only):** Standard 21 pin connector for mounting the haydon T13666 Interrupter or equivalent. The connector is not prewired.
- (h) **Weight:** 6 lbs. without cards.

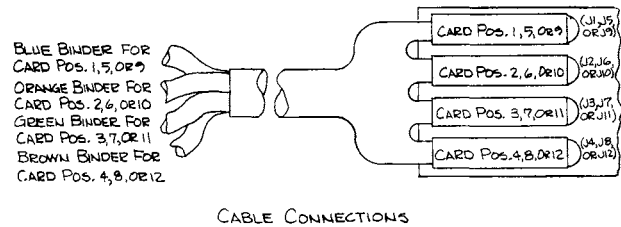
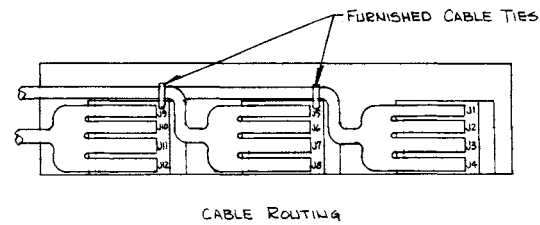


Fig. 2 External Cabling, Rear View

3. INSPECTION

Inspect the unit thoroughly as soon as possible after delivery. Visually inspect for broken and loose wires, or card damage. If any part of the unit has been damaged in transit, report the extent of damage to the transportation company immediately.

4. MOUNTING

The SB317A Mounting Shelf is designed for standard 23" rack or apparatus mounting fixtures such as the WE 16C wall mount apparatus fixture. The mounting shelf has mounting flanges with two slotted holes on each side. The slotted holes allow maximum flexibility in positioning of the unit up or down relative to other shelves. Because of the unit's light weight, only four mounting screws are needed and may be positioned anywhere in the slots. The cable interface is designed for rear panel entry from the right side. If installing in a hinged apparatus mounting, the equipment gate should swing out to the right for ease of cable

5. INSTALLER CONNECTIONS

The SB317A Mounting Shelf is factory wired to allow signal connection to the cards through individual 50-pin telephone connectors. Each 40-pin card connector has all pin connections terminated at a specific telephone connector. The card position number on the designation strip corresponds to the connector numbers. Any combination of 18, 20, or 40 pin cards may be used. For example, an 18 pin card has pin assignments that will appear at pins 1 through 18 on the 40

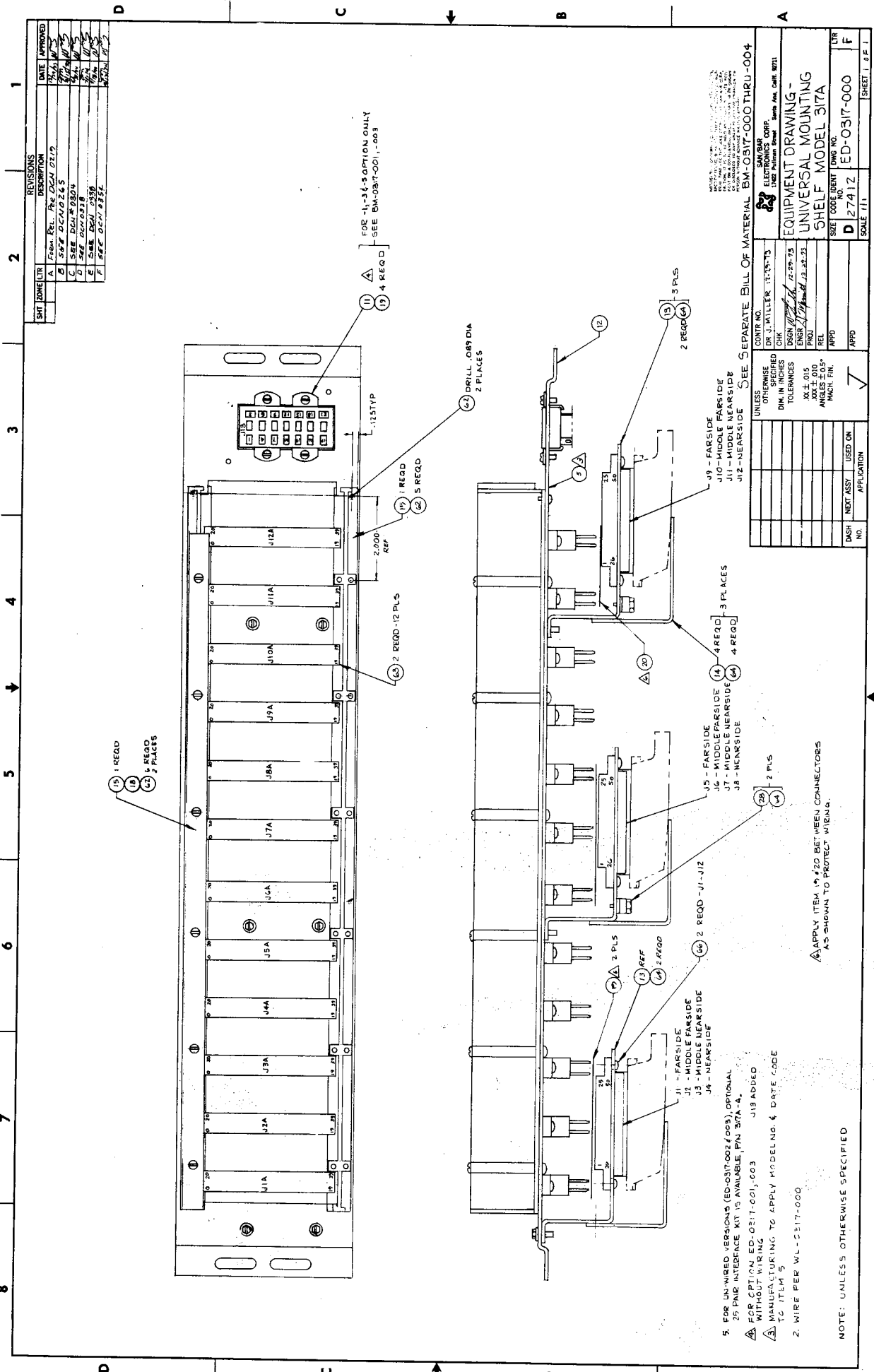
pin card connector (the remaining connections are left blank).

The telephone connector interface is arranged such that there are three groups of four connectors each. Therefore, four-connector, 100 pair cables (Amphenol AC-A100C or equivalent) may be used to interface the shelf, (See Fig. 2). Refer to the schematic drawing (Fig. 4) for the complete pin assignments appearing at each connector. Since all the pin connections appear at the telephone connectors, no installer wiring internal to the shelf is required.

- 5.1 The 317A-2 and -3 are unwired versions and may be wired for compatibility with any 18, 20, or 50-pin K.T.U. circuit card by wire wrap or soldering.

6. TESTING

- 6.1 If trouble is encountered with system operation in the SB317A Mounting Shelf, check that all installer connections have been made properly. The SB317A contains no electrical components that are normally considered subject to failure. However, possible wire breakage or poor wire terminations may be verified using normal continuity checking procedures with a standard multimeter (Simpson 263 or equivalent).
- 6.2 The 317A Mounting Shelf is warranted for a period of one year from the date of purchase. If trouble is encountered with the SB317A, return the unit to San/Bar Corporation, 17422 Pullman st., Santa Ana, CA 92705. For technical assistance, call (714) 546-6500



REV	DATE	APPROVED	DESCRIPTION
A	7/1/61	[Signature]	FROM REL. TO DCN 2217
B	7/1/61	[Signature]	SEE DCN 265
C	7/1/61	[Signature]	SEE DCN 265
D	7/1/61	[Signature]	SEE DCN 265
E	7/1/61	[Signature]	SEE DCN 265
F	7/1/61	[Signature]	SEE DCN 265

SHEET 1 OF 1	
ED-0317-000	ED-0317-000
D 27412	ED-0317-000
SCALE 1/11	
LTR	
F	

CONTR NO	DR J. MILLER 11-15-73
OTHERWISE	UNLESS OTHERWISE SPECIFIED
DIM IN INCHES	XX ± .015
TOLERANCES	XX ± .010
ANGLES	XX ± .010
FIN.	MACH. FIN.
APPD	[Signature]
DESIGN	22-29-73
ENGR	[Signature]
PROJ	12-27-73
REL	
APPD	

DASH	NO.	USED ON	APPLICATION

SEE SEPARATE BILL OF MATERIAL BM-0317-000 THRU -004

UNLESS OTHERWISE SPECIFIED

DR J. MILLER 11-15-73

UNLESS OTHERWISE SPECIFIED

DIM IN INCHES

TOLERANCES

XX ± .015

XX ± .010

ANGLES

XX ± .010

FIN.

MACH. FIN.

APPD [Signature]

DESIGN 22-29-73

ENGR [Signature]

PROJ 12-27-73

REL

APPD

NOTE: UNLESS OTHERWISE SPECIFIED

APPLY ITEM 19, 20 BETWEEN CONNECTORS

AS SHOWN TO PROTECT WIRES.

FOR UN-WIRED VERSIONS (ED-0317-002/003), OPTIONAL

25 PIN INTERFACE KIT IS AVAILABLE, P/N 317A-A.

FOR OPTION ED-0317-001, 003 J13 ADDED

WITHOUT MOUNTING TO APPLY MODEL NO. & DATE CODE

IC ITEM 5

2. WIRE PER WL-5217-000

Fig. 3
3

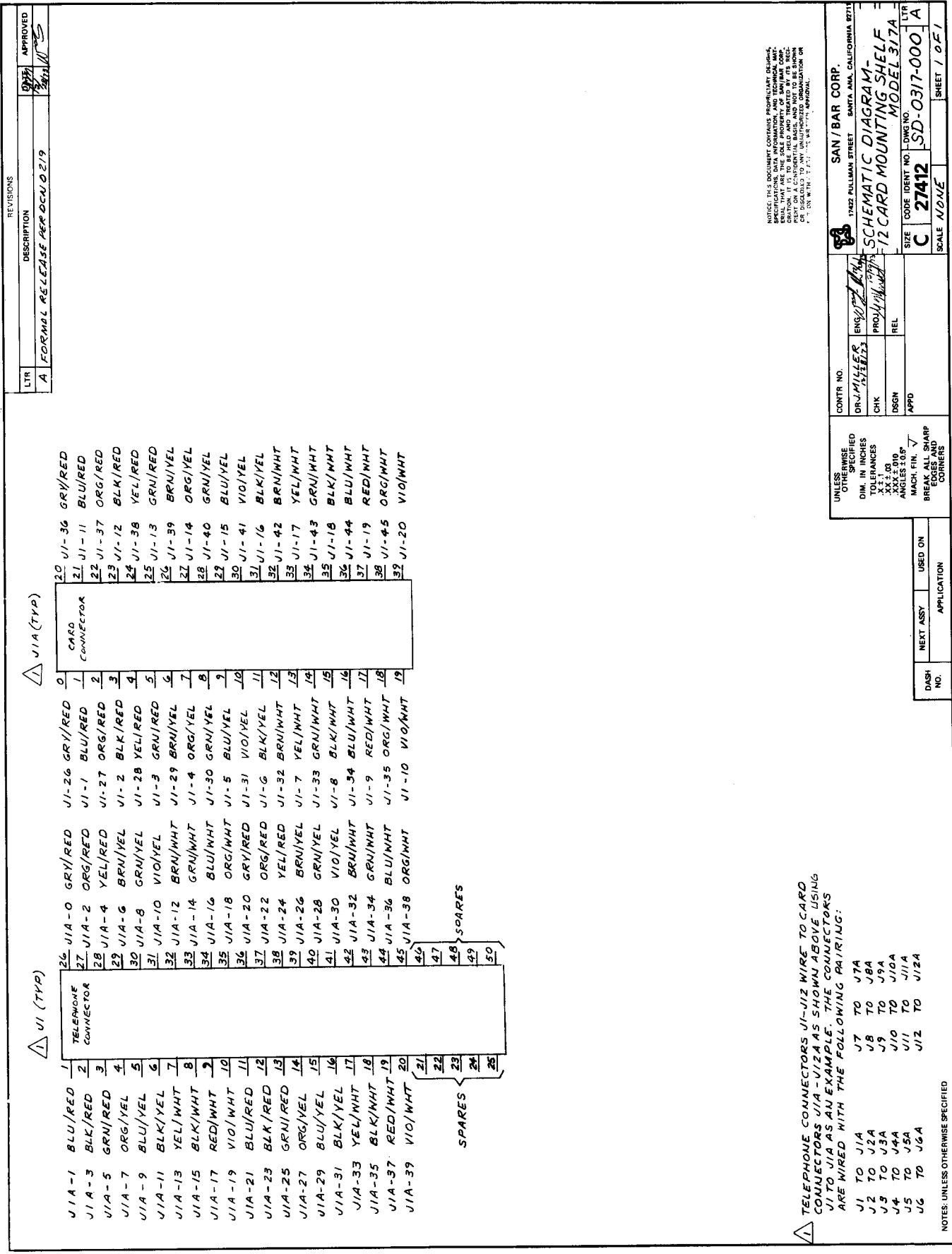


Fig. 4