

**MONITORING KEY ARRANGED
FOR MONITORING ON THREE LINES****1. GENERAL**

1.01 This section covers the description, installation, and operation of a three position key and associated equipment arranged for monitoring on a maximum of three central office lines, PBX lines, or PBX attendant circuits. It is reissued with an improved circuit arrangement whereby a smaller bridged capacity is employed during the actual monitoring time, and whereby the monitoring bridge is removed from the line by disengaging the headset plug from the jack when monitoring is not required.

2. DESCRIPTION

2.01 Major items of equipment include a 6017-E key, two 215-C jacks in a 237-A jack mounting, a single or double head receiver which is plugged, together with a 94-F repeating coil which is arranged on an angle bracket (equipment unit ED-91938-01, G8), and a 33-A varistor and 439-C condenser which are arranged on an angle bracket (equipment unit ED-91929-01, G3). Equipment connections are shown on Drawing G-3128 (see Page 3 of this section).

3. INSTALLATION

3.01 The equipment units containing the repeating coil, varistor, and condensers may be conveniently mounted in one 105A apparatus box. The key, jack mounting, and apparatus box should be in-

stalled in accordance with standard installation practices and as far as possible in a location which is convenient and agreeable with the customer.

4. OPERATION

4.01 Insertion of the headset plug into the jacks and proper manipulation of the key will connect the headset across the desired line for monitoring. When not in use, the headset plug should be removed from the jacks in order to disconnect the monitoring bridge from the line.

5. MATERIALS

5.01 Material requirements are included on Drawing G-3128 (See Page 3).

3 POSITION MONITORING CIRCUIT

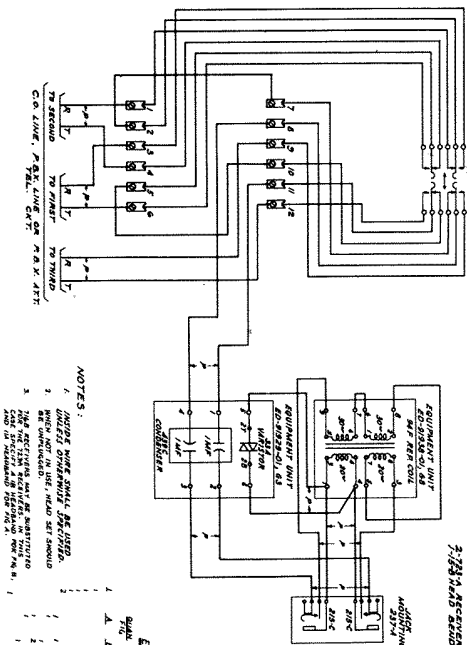
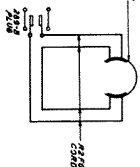
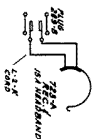


FIG. 8

FIG. A
LE HEAD RECEIVER

EQUIPMENT LIST

[illegible]

NOTES:

- INSIDE WIRE SHALL BE USED UNLESS OTHERWISE SPECIFIED.
- WEN NOT IN USE, HEAD SET SHOULD BE UNPLUGGED.
- THAT RECEIVERS MAY BE MULTISTRO FOR THE 12M RECEIVERS. IN THIS CASE SPECIFY A OR HEADBOARD FOR PG. B, AND A HEADBOARD FOR PG. A.

G-3128

6	2	1	DWG. 155.
---	---	---	--------------