

## JACKS AND JACK MOUNTINGS

### FOR PORTABLE TELEPHONE SETS, OUTDOOR TYPE

### IDENTIFICATION, INSTALLATION, AND CONNECTIONS

#### 1. GENERAL

Do not use hand telephone sets (those requiring a subscriber set) and telephone sets together in the same jack and plug system.

Mount jacks in a uniform manner so that when the plug is inserted, the set mounting cord enters the bottom of the plug.

#### 2. IDENTIFICATION

##### *Ordering Guide*

Jack, KS-8420

Jack, KS-8421

Housing, Weatherproof, KS-19316, L4

Cover, Weatherproof, KS-19316, L5

Housing Box, KS-19316, L6

Housing, KS-20202, L1 or L2

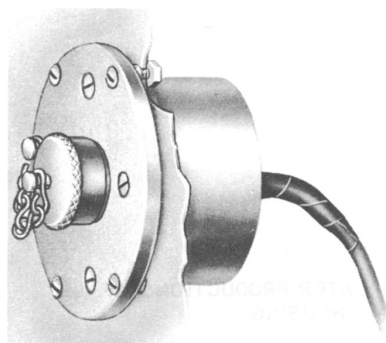


Fig. 1 — KS-8420 Jack, Installed

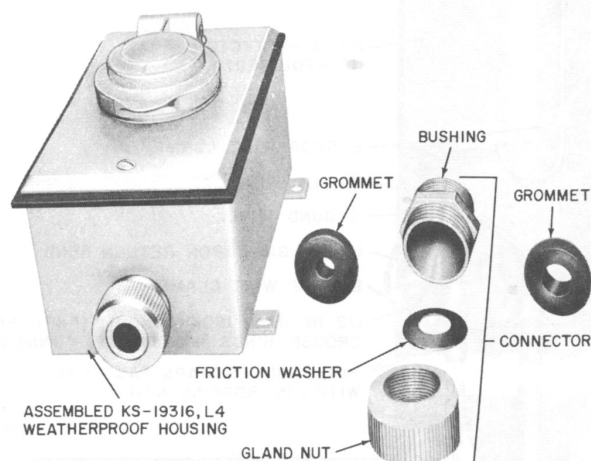
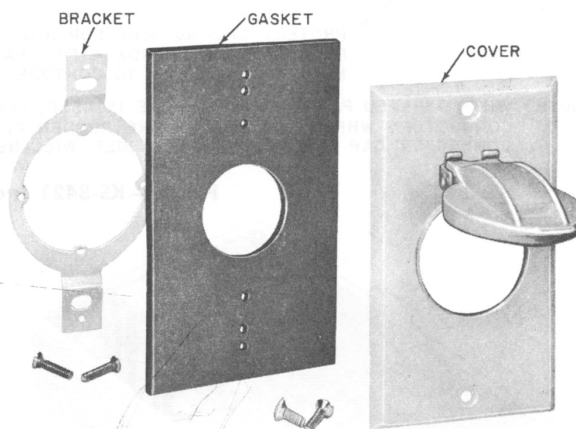


Fig. 4 — KS-19316, List 4 Housing and Components  
(2 of 3 Grommets Shown)



• FOR USE WHERE BOX FOR JACK HAS BEEN INSTALLED OR REPLACEMENT PARTS FOR KS-19316, LIST 4.

• ACCEPTS:  
493A JACK (MD)  
541A JACK  
548A JACK

• MOUNTS TO STANDARD ELECTRICAL OUTLET BOX

• MOUNTING SCREWS SUPPLIED

Fig. 5 — KS-19316, List 5 Cover

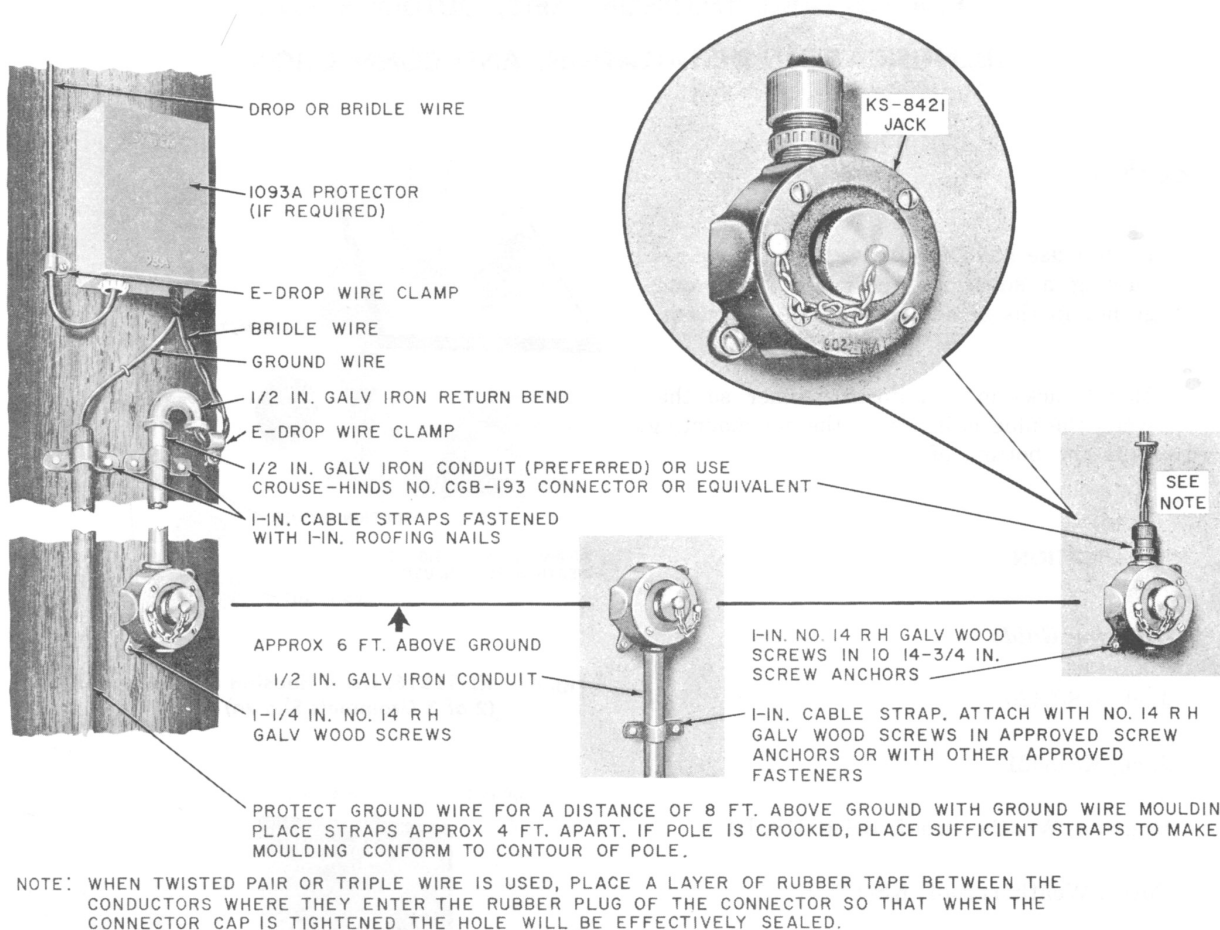
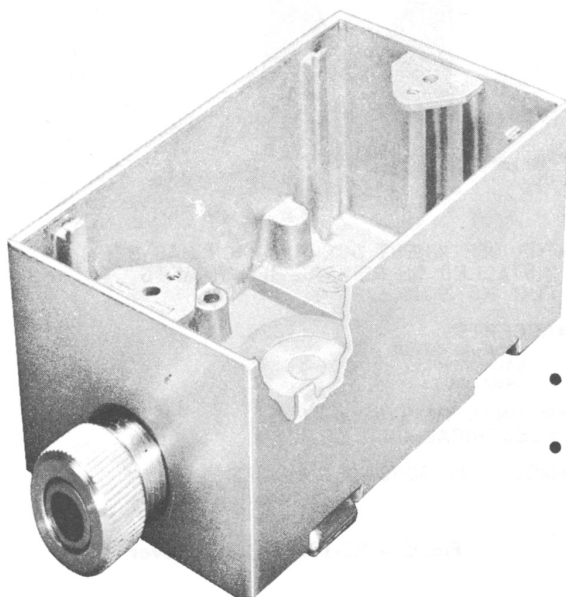
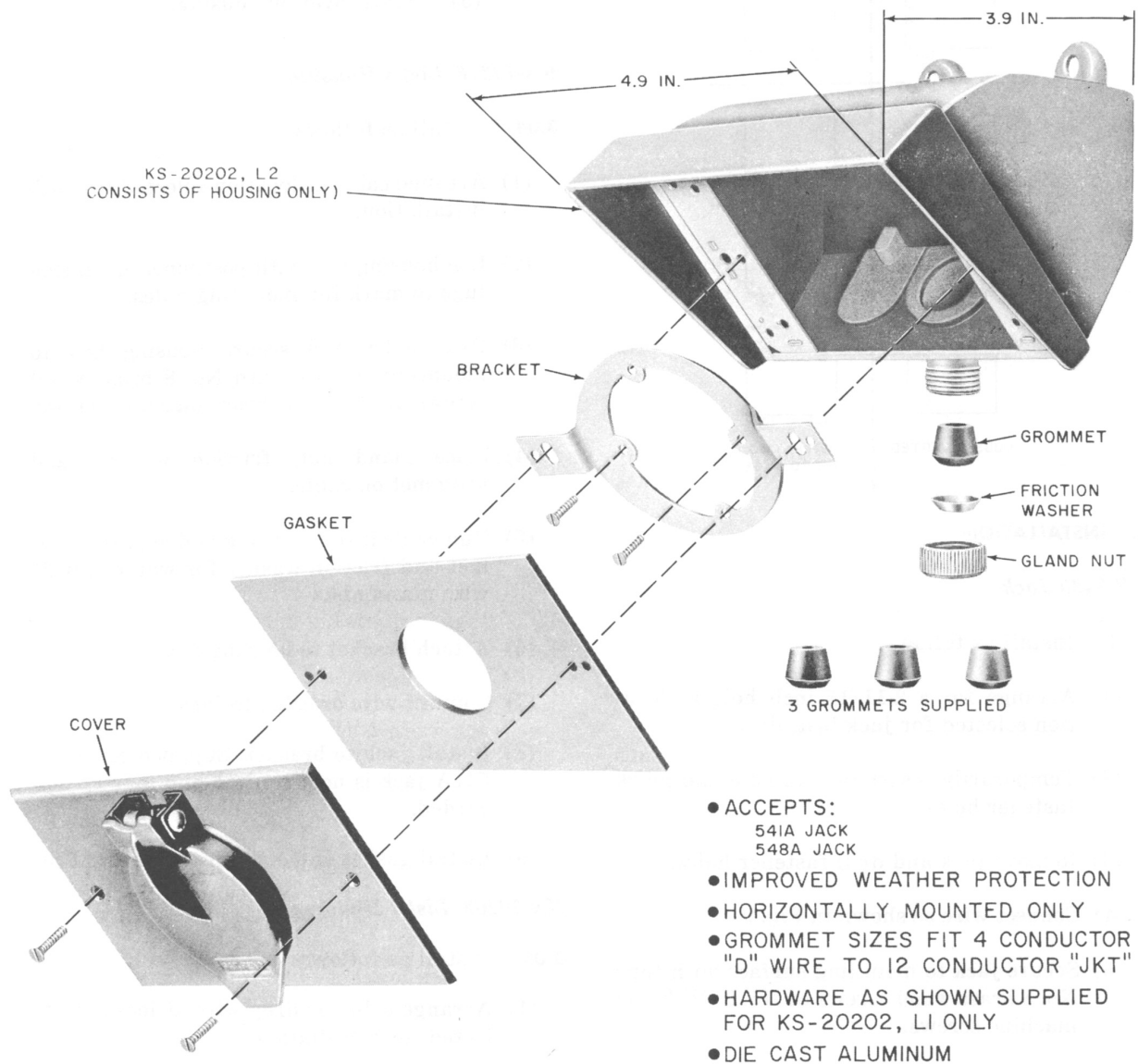


Fig. 2 — KS-8421 Jack, Typical Installation

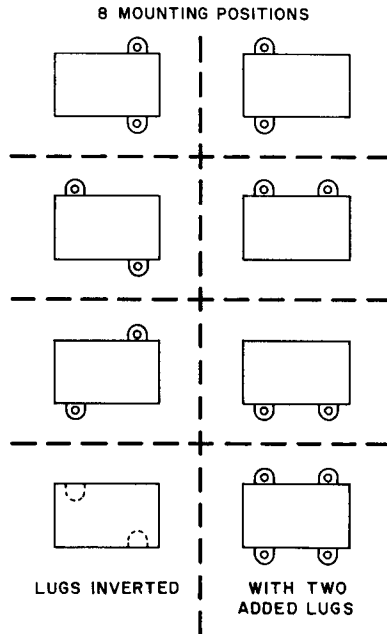


- FURNISHED WITH LATER PRODUCTIONS OF KS-19316, LIST 4 HOUSING
- WITH REVERSIBLE MOUNTING LUGS

Fig. 6 — KS-19316, List 6 Housing Box



**Fig. 8 — Assembly of KS-20202, Lists 1 and 2 Weatherproof Housing**



### 3. INSTALLATION

#### *KS-8420 Jack*

##### 3.01 Install as follows:

- (1) Arrange for a 2-11/16 inch hole at location selected for jack installation.
- (2) Temporarily insert jack in hole and mark fastener holes.
- (3) Remove jack and drill fastener holes.
- (4) Connect wire as shown in Fig. 9.
- (5) Secure jack to mounting surface with four No. 8 brass wood screws or No. 8 RH brass machine screws.

#### *KS-8421 Jack*

##### 3.02 Install as follows:

- (1) Arrange drop wire or bridle wire and conduit at location selected for installation.
- (2) Secure the jack housing to the mounting surface using suitable fasteners.
- (3) Connect wire to terminal block as shown in Fig. 9.

(4) Mount terminal block to jack housing.

(5) Install cover on housing.

#### *KS-19316, List 4 Housing*

##### 3.04 Install as follows:

- (1) Arrange cable at location selected for jack installation.
- (2) Use housing box with positioned mounting lugs to mark lug mounting holes.
- (3) Drill holes and secure housing box to mounting surface with No. 8 brass wood screws or No. 8 RH brass machine screws.
- (4) Place gland nut, friction washer, and grommet on cable.
- (5) Run cable inside housing and adjust grommet and friction washer for watertight fit with gland nut.
- (6) Attach bracket to housing box.
- (7) Connect wire or cable to jack.
- (8) Install jack to bracket. Supplied cover for 541A jack is not required and may be discarded.
- (9) Install gasket and cover for watertight fit.

#### *KS-20202, List 1 Housing*

##### 3.05 Install as follows:

- (1) Arrange cable or drop wire at location selected for installation.
- (2) Hold housing to mounting surface and mark fastener holes.
- (3) Remove housing and drill fastener holes.
- (4) Secure housing to mounting surface with No. 8 brass wood screws or No. 8 RH brass machine screws.
- (5) Place gland nut, friction washer and grommet onto cable or drop wire.

- (6) Run cable or drop wire inside housing and adjust grommet and friction washer for watertight fit with gland nut.
- (7) Install bracket and arrange cable or drop wire through center of bracket.
- (8) Connect conductors to selected jack.
- (9) Install jack to bracket. Supplied cover for 541A jack is not required and may be discarded.
- (10) Install gasket and cover.

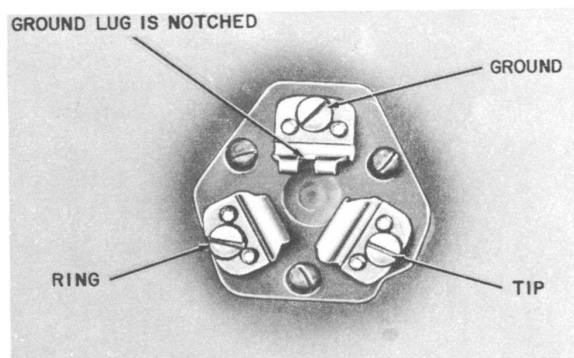


Fig. 9 — Connections for KS-8420 and 8421 Jacks

#### 4. CONNECTIONS

- 4.01 Figure 9 shows connections for KS-8420 and KS-8421 jacks.
- 4.02 Only one conductor shall be connected to a single clip of a clip-type jack terminal.
- 4.03 For a 4-conductor jack, connect conductor as indicated by the color designator stamped next to the terminals. The red conductor is terminated at the R terminal, etc.
- 4.04 Table A shows the connections for 12-conductor jacks.
- 4.05 Wiring variations (eg, class-of-service, etc, normally made in the connecting block) **should not be made** in the jacks; any variations should be made in the plugs.

**Caution:** Test each jack location for correct continuity.

TABLE A

12 CONDUCTOR JACK CONNECTIONS

D AND E WIRING CABLE	TERMINAL DESIGNATION
BL-W	1
W-BL	2
O-W	3
W-O	4
G-W	5
W-G	6
BR-W	7
W-BR	8
S-W	9
W-S	10
BL-R	11
R-BL	12