

SERVICE

2565LK, 2565LKM, AND 2565LKMS TELEPHONE SETS

CONNECTIONS

1. GENERAL

1.01 This section contains information for the 2565LK (MD), 2565LKM (MD), and 2565LKMS telephone sets (Fig. 1 and 2).

1.02 Reissued to:

- Show 2565LKM telephone set MD
- Show 3-type speakerphone MD
- Add information on 2565LKMS telephone set
- Add information on 533K diode.

1.03 ♦The 2565LKMS telephone set is similar to the 2565LKM except a new line switch assembly is provided in the 2565LKMS set which breaks both the tip and ring side of the line.

2. CONNECTIONS

2.01 These sets are factory-wired for 1A1 or 1A2 KTS, 4A speakerphone, and individual or common line ringer. They are equipped with hold key and cutoff key. Mounting cord conductors are provided for illuminating the hold key lamp, but the lamp is not provided with the set and must be ordered separately.

2.02 When used with 1A KTS and speakerphone, modify sets as shown in Fig. 3 or 4.

2.03 These sets are factory-equipped with a KS-20419L1 (10 volt ac only) buzzer.

2.04 The H1-type ringer leads are wired to terminals RR and RT. When power failure feature is provided in the KTS, the common audible signal must be wired with capacitor in series.

2.05 If 3-type (MD) speakerphone control unit is located near the telephone set, the mounting cord conductors can be extended to the control unit by using a 149-type adapter or 66E-type connecting block. If control unit is located at key equipment, extend leads through an A25B connector cable or inside wiring cable. Speakerphone connections for the 2565-type telephone sets are shown in Division 512.

2.06 When a 2565LK or 2565LKM (manufactured prior to July 20, 1979) telephone set is not used as a speakerphone set and is multiplied with any other set furnishing speakerphone feature, the T1 (V-G) and R1 (G-V) speakerphone leads must be disconnected, insulated, and stored at the telephone set. If not disconnected, these speakerphone leads will provide a common path between the circuits of the multiplied telephone sets. Speakerphone connections are shown in Division 512.

2.07 Exclusion can be provided with these sets by the addition of a D-179935 Kit of Parts which must be ordered separately. Exclusion switch can also be used to cutoff ringer or buzzer in set. Connect as shown in Table A.

2.08 Cutoff of extension stations, ringers, or buzzer can also be made using the cutoff key on the 589AJ key.

2.09 A polarity guard is used only when specified by local instruction for end-to-end signaling installation when battery and ground reversals may be encountered.

2.10 When polarity guard is required with these sets, connect guard assembly as shown in Table B.

2.11 A 811353135 (P-13E313) terminal strip assembly is available when additional terminating

NOTICE

Not for use or disclosure outside the
Bell System except under written agreement

SECTION 502-543-406

points are required for auxiliary services such as buzzers, lamp, etc. Assembly must be ordered separately.

- 2.12** The 4th key position is convertible from line pickup (locking) to signaling (nonlocking) by

removal of the 811218924 (P-12A892) screw detail. Arrange as shown in Table C.

- 2.13** Installation instructions for the exclusion switch, polarity guard, and auxiliary terminal strip are given in Section 502-500-120.

TABLE A
EXCLUSION SWITCH CONNECTIONS

EXCLUSION	KEY TEL SYS	EXCLUSION SWITCH LEADS							
		BL-W	W-BL	O-W	W-O	BL-V	V-BL	O-V	V-O
On any line	1A	R*	T*	1B†	H*	ER	ET	EB	EH
	1A1 or 1A2	R*	T*	EB	H*	ER	ET	EB	EH

* Terminal of line involved.

† When other than line 1 is excluded on 1A KTS, disconnect, insulate, and store O-W mounting cord conductor from terminal 1B; connect balance lead conductor from line involved to 1B.

TABLE B
POLARITY GUARD CONNECTIONS

[819040528 (P-90D052) GUARD ASSEMBLY]

LEAD		REMOVE FROM	CONNECT TO	
		NET.	NET.	POLARITY GUARD
Dial	BK	RR		T
	G-W	C		S
Line Switch	W	C		S
Polarity Guard	G		RR	
	W		C	

TABLE C
PICKUP-SIGNAL KEY CONVERSION

KEY OPTIONS	BR-BK KEY LEAD
HPPPPC	M
HPPPSC	SG

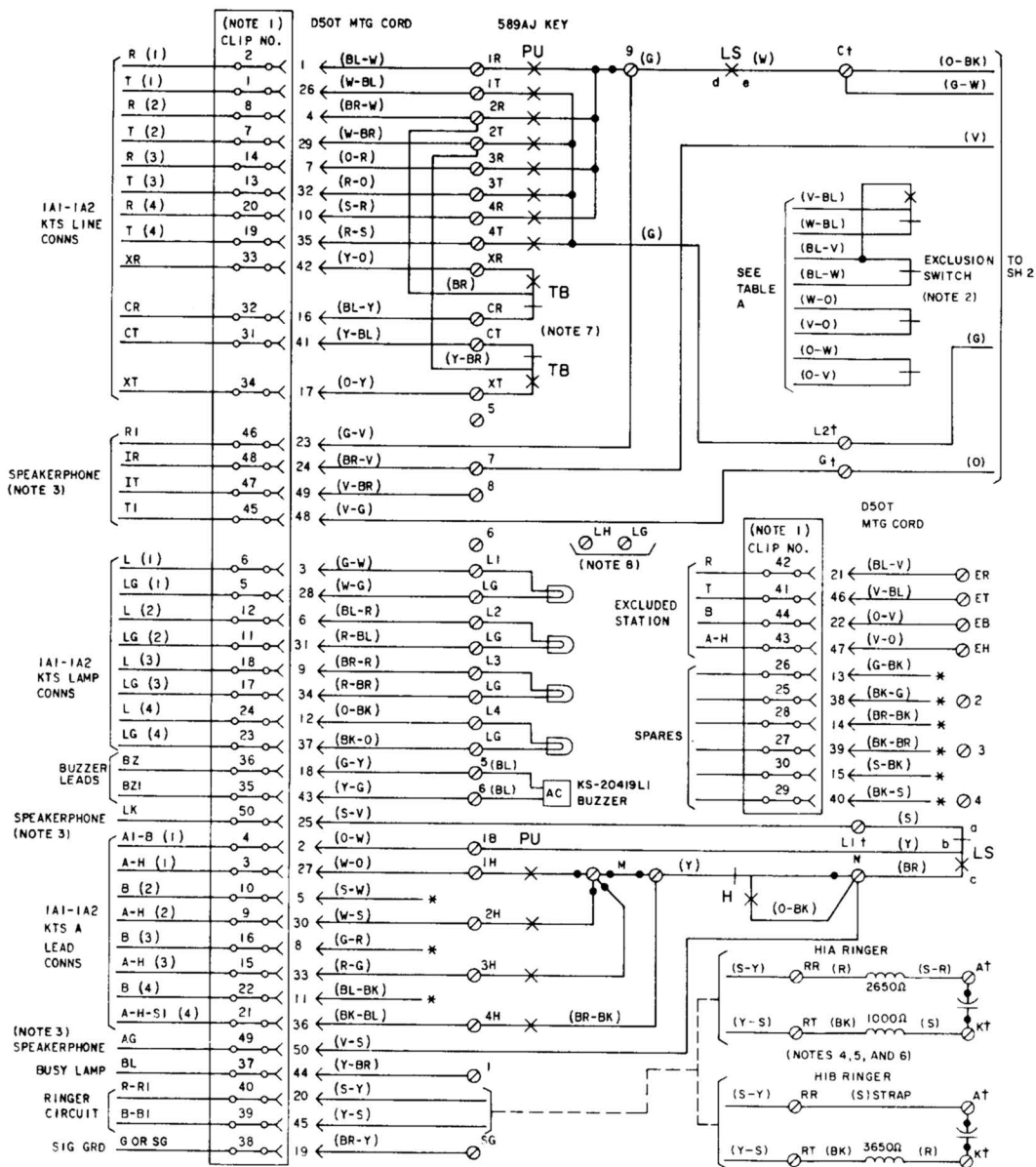
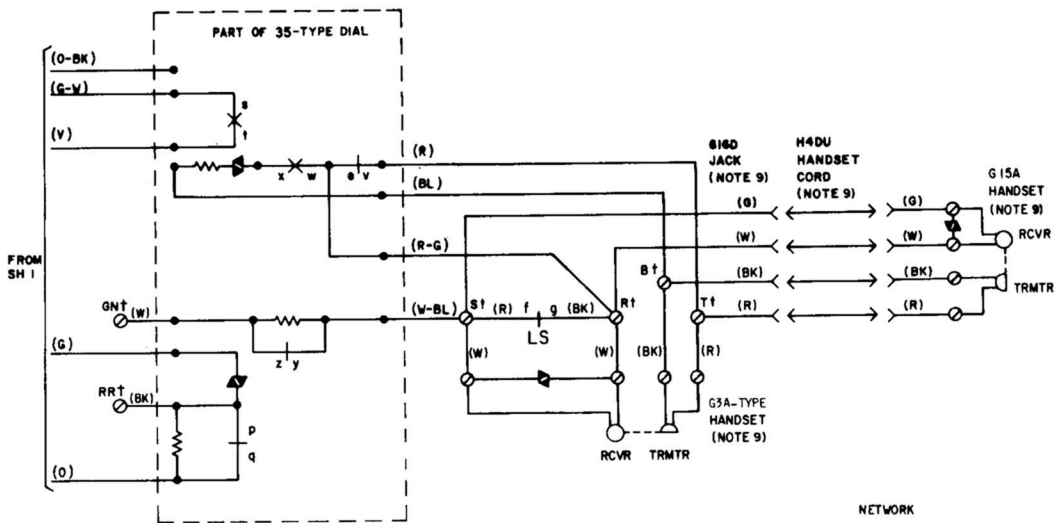
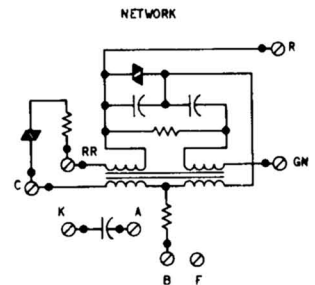


Fig. 1— Φ 2565LK (MD) or 2565LKM [(MD) Manufactured Prior to July 20, 1979] Telephone Set, Connections
(Sheet 1 of 2) Φ



NOTES:

1. 66E-TYPE CONNECTING BLOCK SHOWN. MOUNTING CORD MAY BE PLUGGED DIRECTLY INTO CONNECTOR CABLE. COLORS AND PIN NUMBERS FOR CONNECTOR ARE SAME AS MOUNTING CORD.
2. IF EXCLUSION FEATURE IS ADDED, CONNECT SWITCH LEADS PER TABLE A.
3. DISCONNECT, INSULATE AND STORE T1(V-G) AND R1(G-V) MOUNTING CORD LEADS WHEN SET IS NOT USED AS A SPEAKERPHONE SET. THESE LEADS ARE INSULATED AND STORED IN 2565LKM SETS MANUFACTURED AFTER JULY 20, 1979.
4. FOR BRIDGED RINGER ON ANY LINE USING H1A RINGER, CONNECT (R) RINGER LEAD TO RING AND (BK) RINGER LEAD TO TIP OF LINE INVOLVED. FOR BRIDGED RINGER ON ANY LINE USING HIB RINGER, REMOVE (S) STRAP LEAD FROM RR (KEY TERMINAL BOARD) AND CONNECT TO RING AND (BK) RINGER LEAD TO TIP OF LINE INVOLVED.
5. IF CAPACITOR IS NOT REQUIRED IN RINGER CIRCUIT, MOVE (S) RINGER LEAD TO A OF NETWORK FOR H1A RINGER AND (R) RINGER LEAD TO A OF NETWORK FOR HIB RINGER.
6. TO SILENCE RINGER PERMANENTLY REFER TO SECTION 501-254-100.
7. TURNBUTON SHOWN WIRED AS CUTOFF OF LINE 2, CAN BE REWIRED AS CUTOFF OF OTHER LINES, EXT. RINGER, RINGER IN SET, ETC. CONNECT AS REQUIRED.
8. IF HOLD POSITION LAMP IS REQUIRED, USE SPARE PAIR AND TERMINATE ON LH AND LG TERMINALS.
9. 2565LKM SETS ARE EQUIPPED WITH G3A6 HANDSET AND CORD. 2565LKM SETS ARE EQUIPPED WITH G15A HANDSET, H4DU HANDSET CORD, AND 6160 JACK ASSEMBLY.



TB-TURNBUTTON (CUTOFF)

PU-PICKUP KEY

H - HOLD KEY

LS-LINE SWITCH

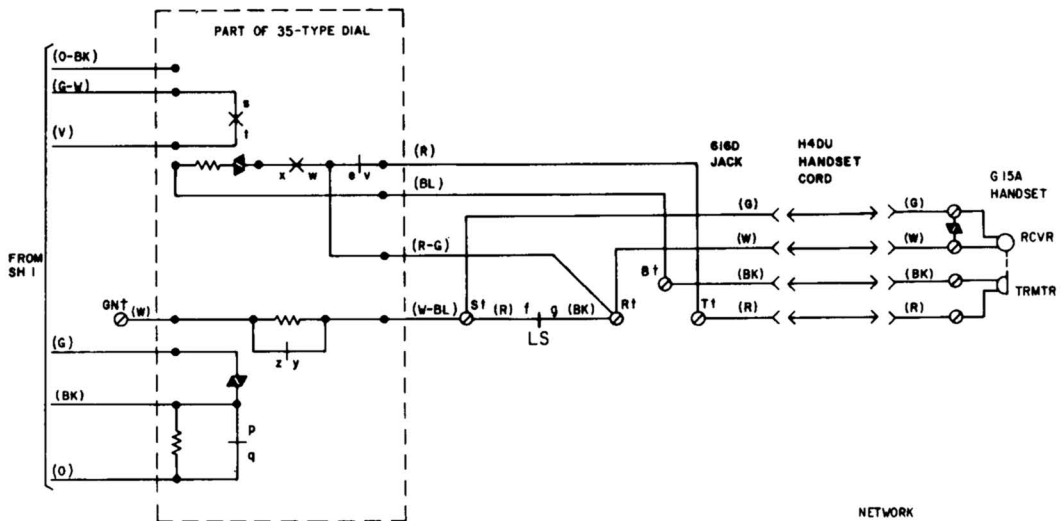
* INSULATED A

† NETWORK TERMINAL-UNDER

7. NETWORK TERMINAL UNDESIGNATED
TERMINALS ARE ON KEY TERMINAL
BOARD

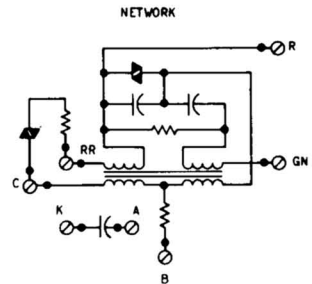
Fig. 1—2565LK (MD) or 2565LKM [(MD) Manufactured Prior to July 20, 1979] Telephone Set, Connections
(Sheet 2 of 2)†





NOTES:

1. 66E-TYPE CONNECTING BLOCK SHOWN. MOUNTING CORD MAY BE PLUGGED DIRECTLY INTO CONNECTOR CABLE. COLORS AND PIN NUMBERS FOR CONNECTOR ARE SAME AS MOUNTING CORD.
2. IF EXCLUSION FEATURE IS ADDED, CONNECT SWITCH LEADS PER TABLE A.
3. WHEN A SPEAKERPHONE IS INSTALLED, CONNECT (G-V) MOUNTING CORD LEAD TO TERMINAL 9 AND (V-G) MOUNTING CORD LEAD TO NETWORK TERMINAL G. ALSO, REMOVE (G) LEAD FROM NETWORK TERMINAL L2 AND CONNECT TO NETWORK TERMINAL F.
4. FOR BRIDGED RINGER ON ANY LINE, REMOVE (S) STRAP LEAD FROM RR (KEY TERMINAL BOARD) AND CONNECT TO RING AND (BK) RINGER LEAD TO TIP OF LINE INVOLVED.
5. IF CAPACITOR IS NOT REQUIRED IN RINGER CIRCUIT, MOVE (R) RINGER LEAD TO A OF NETWORK.
6. TO SILENCE RINGER PERMANENTLY REFER TO SECTION 501-254-100.
7. TURNBUTTON SHOWN WIRED AS CUTOFF OF LINE 2. CAN BE WIRED AS CUTOFF OF OTHER LINES, EXT. RINGER, RINGER IN SET, ETC. CONNECT AS REQUIRED.
8. IF HOLD POSITION LAMP IS REQUIRED, USE SPARE PAIR AND TERMINATE ON LH AND LG TERMINALS.



TB-TURNBUTTON (CUTOFF)

PU-PICKUP KEY

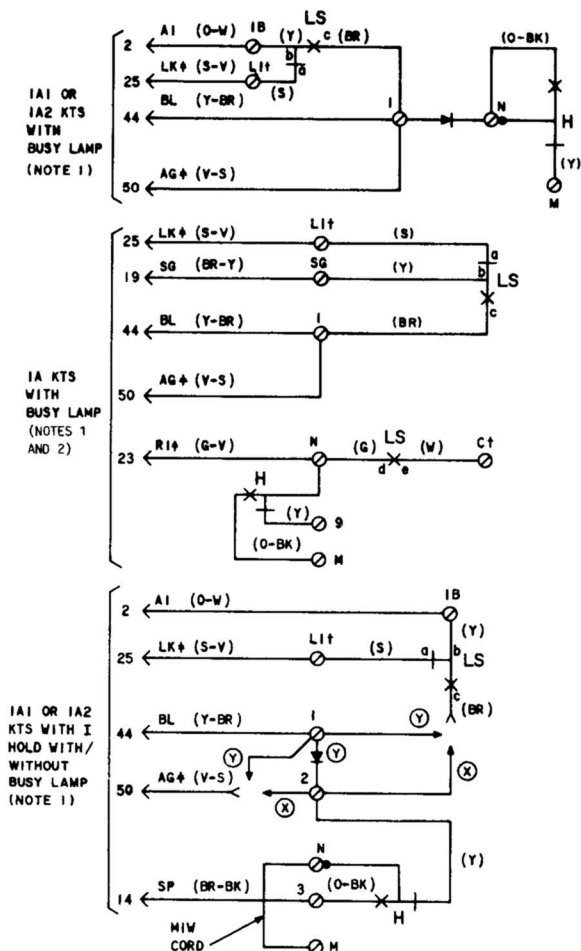
H - HOLD KEY

LS-LINE SWITCH

* INSULATED AND STORED

† NETWORK TERMINAL-UNDESIGNATED
TERMINALS ARE ON KEY TERMINAL
BOARD

Fig. 2—2565LKMS Telephone Set Connections (Sheet 2 of 2)



NOTES:

- FOR ADDITIONAL CONNECTION INFORMATION ON STATION BUSY LAMP, REFER TO SECTION 502-110-100.
- FOR IA KTS WITHOUT BUSY LAMP, INSULATE AND STORE (Y-BR) D50T MTG CORD LEAD.

† - NETWORK TERMINALS - UNDESIGNATED
TERMINALS ARE ON KEY TERMINAL BOARD
* - 3-TYPE SPEAKERPHONE LEAD

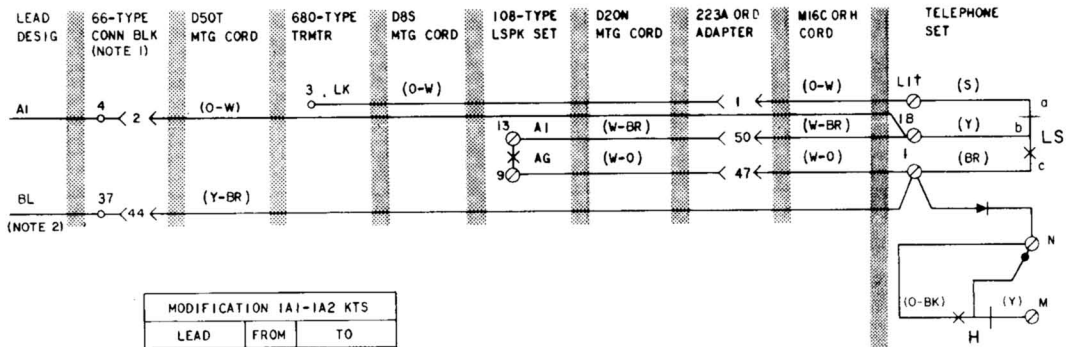
H - HOLD KEY
LS - LINE SWITCH

MODIFICATION IA1-IA2 KTS		
LEAD	FROM	TO
(BR)	N	I
(V-S)	N	I
533K DIODE (ORDERED SEPARATELY)		I TO N

MODIFICATION IA KTS		
LEAD	FROM	TO
(Y)	IB	SG
(BR)	N	I
(V-S)	N	I
(Y)	N	9
(O-BK)	N	N
(G)	9	N
(G-V)	9	N

MODIFICATION I HOLD AND IA1-IA2 KTS			
WITH BUSY LAMP (Y) OPTION	LEAD	FROM	TO
	(BR)	N	I
	(V-S)	N	I
	533K DIODE (ORDERED SEPARATELY)		I TO 2
	(Y)	N	2
	(O-BK)	N	3
WITHOUT BUSY LAMP (X) OPTION	MIW CORD		N TO N
	(BR)	N	2
	(V-S)	N	2
	(Y)	N	2
	(O-BK)	N	3
	MIW CORD		N TO N

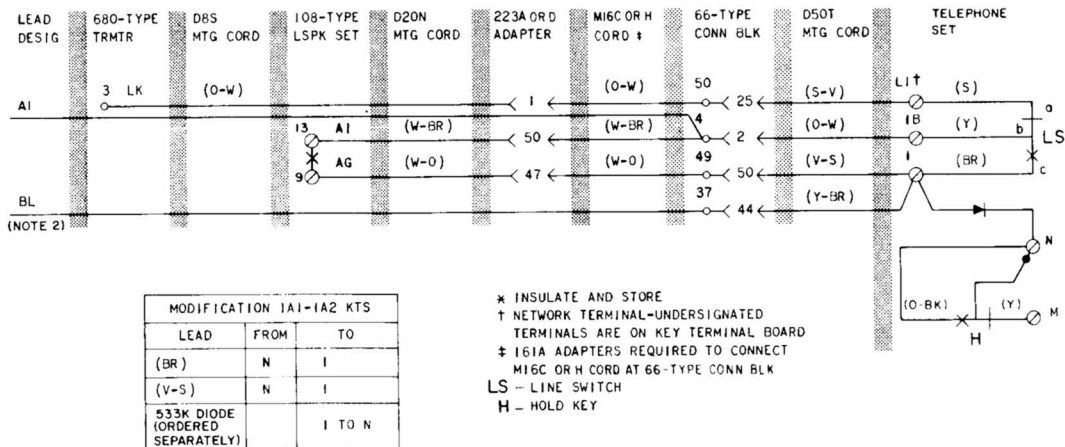
Fig. 3—Optional Features with 3-Type (MD) Speakerphone



NOTES:

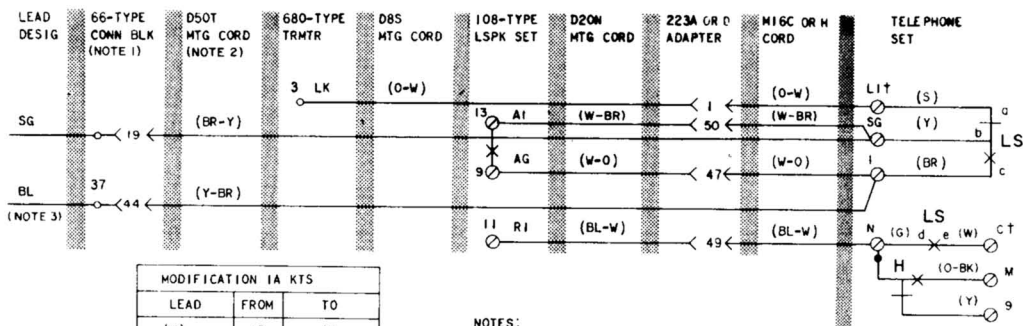
- 66-TYPE CONNECTING BLOCK SHOWN. MTG CORD MAY BE PLUGGED DIRECTLY INTO CONNECTOR CABLE. COLORS AND PIN NUMBERS FOR CONNECTOR CABLE ARE SAME AS MTG CORD.
- FOR ADDITIONAL CONNECTION INFORMATION ON STATION BUSY LAMP, REFER TO SECTION 502-110-100.

A. 1A1-1A2 KTS WIRED FOR BUSY LAMP WITH MI6C OR H CORD TERMINATED IN TEL SET

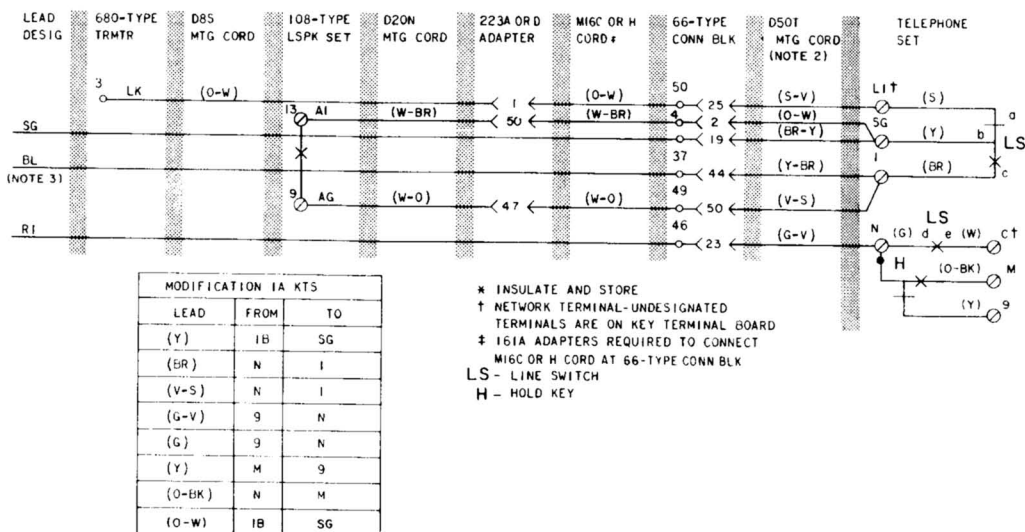


B. 1A1-1A2 KTS WIRED FOR BUSY LAMP WITH MI6C OR H CORD TERMINATED AT 66-TYPE CONN BLK

Fig. 4—Optional Features with 4A Speakerphone (Sheet 1 of 3)¶

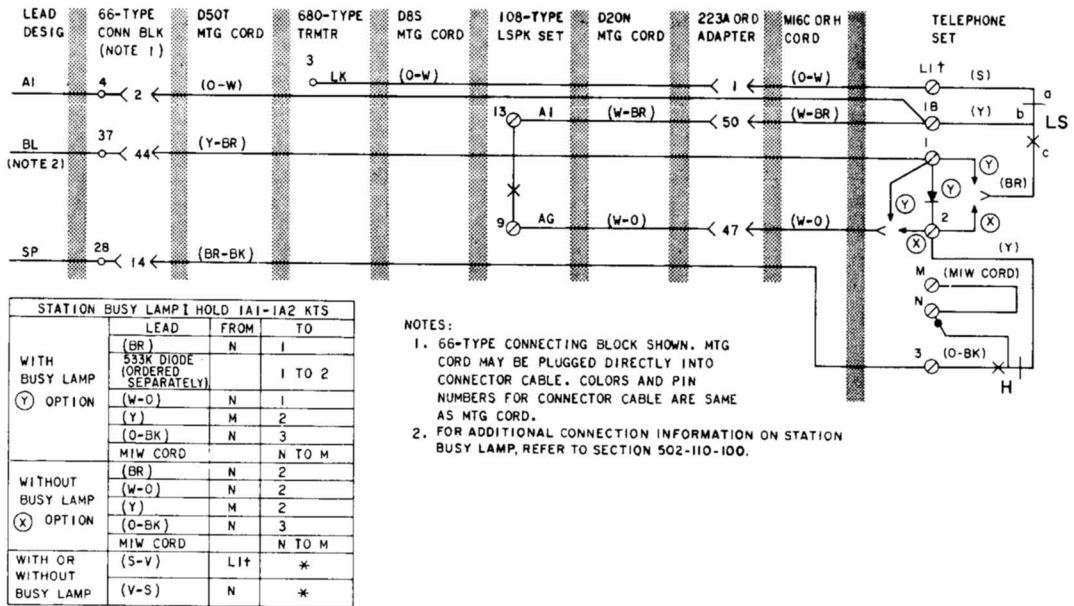


A. 1A KTS WIRED FOR BUSY LAMP WITH M16C OR H CORD TERMINATED IN TEL SET

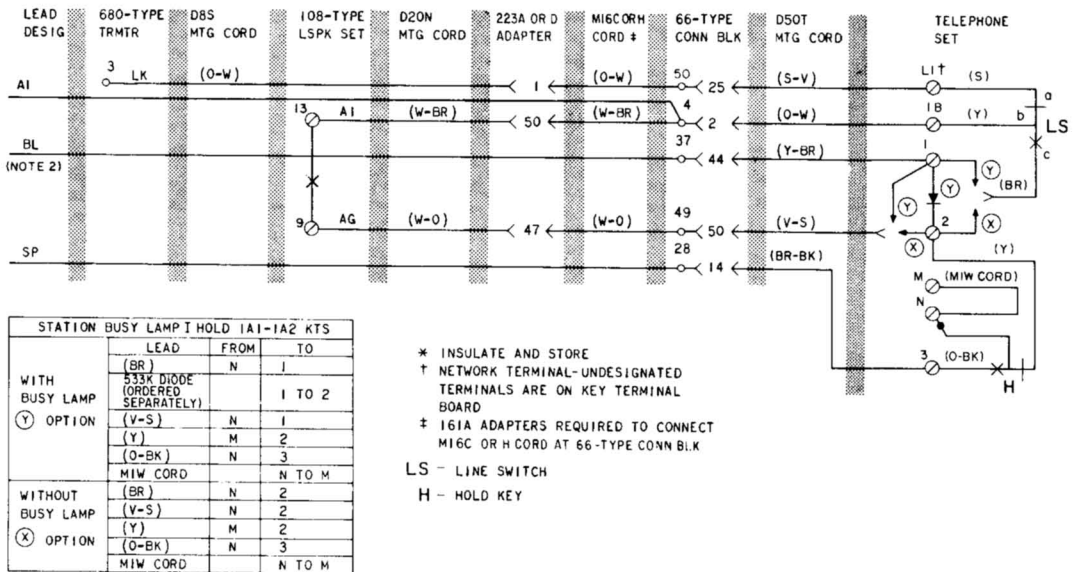


B. 1A KTS WIRED FOR BUSY LAMP WITH M16C OR H CORD TERMINATED AT 66-TYPE CONN BLK

Fig. 4—Optional Features with 4A Speakerphone (Sheet 2 of 3)



A. 1A1-1A2 KTS WIRED FOR BUSY LAMP AND I HOLD WITH MI6C OR H CORD TERMINATED IN TEL SET



B. 1A1-1A2 KTS WIRED FOR BUSY LAMP AND I HOLD WITH MI6C OR H CORD TERMINATED AT 66-TYPE CONN BLK

Fig. 4—Optional Features with 4A Speakerphone (Sheet 3 of 3)