

## **SERVICE**

### **564HD TELEPHONE SET**

#### **1. GENERAL**

##### **1.01** Reissued to:

- Revise Fig. 1, 2, 3, and 4
- Remove maintenance information

##### **1.02** This section contains connection information for the 564HD (MD) telephone set.

##### **1.03** Refer to the appropriate Reference section in Division 502 for identification and ordering information.

##### **1.04** For installation and maintenance information for these sets refer to Division 502, section entitled Telephone Sets—540, 560, 1560, and 2560 Series—Common Installation and Maintenance Information.

#### **2. CONNECTIONS**

##### **2.01** The 564HD (MD) telephone sets are factory-wired for use with 1A1, 1A2, or 6A key telephone system (KTS). These sets can be modified for use with 1A KTS (Fig. 3) but are not intended for exclusion or speakerphone use.

##### **2.02** Telephone sets wired with the black and red ringer leads on the RT and RR terminals will have a (+) sign after the code number on the base of the set.

##### **2.03** If the station termination is made on a 66E3-25 or 66E4-25 connecting block, loop-through straps can be installed on connecting block clip terminals 5, 11, 17, 23, and 29 to add the necessary lamp ground copper for lamps 2, 3, 4, and 5. In all cases, full pairs should be brought to the connecting block from connecting key system apparatus via inside wiring or A-type connector cables.

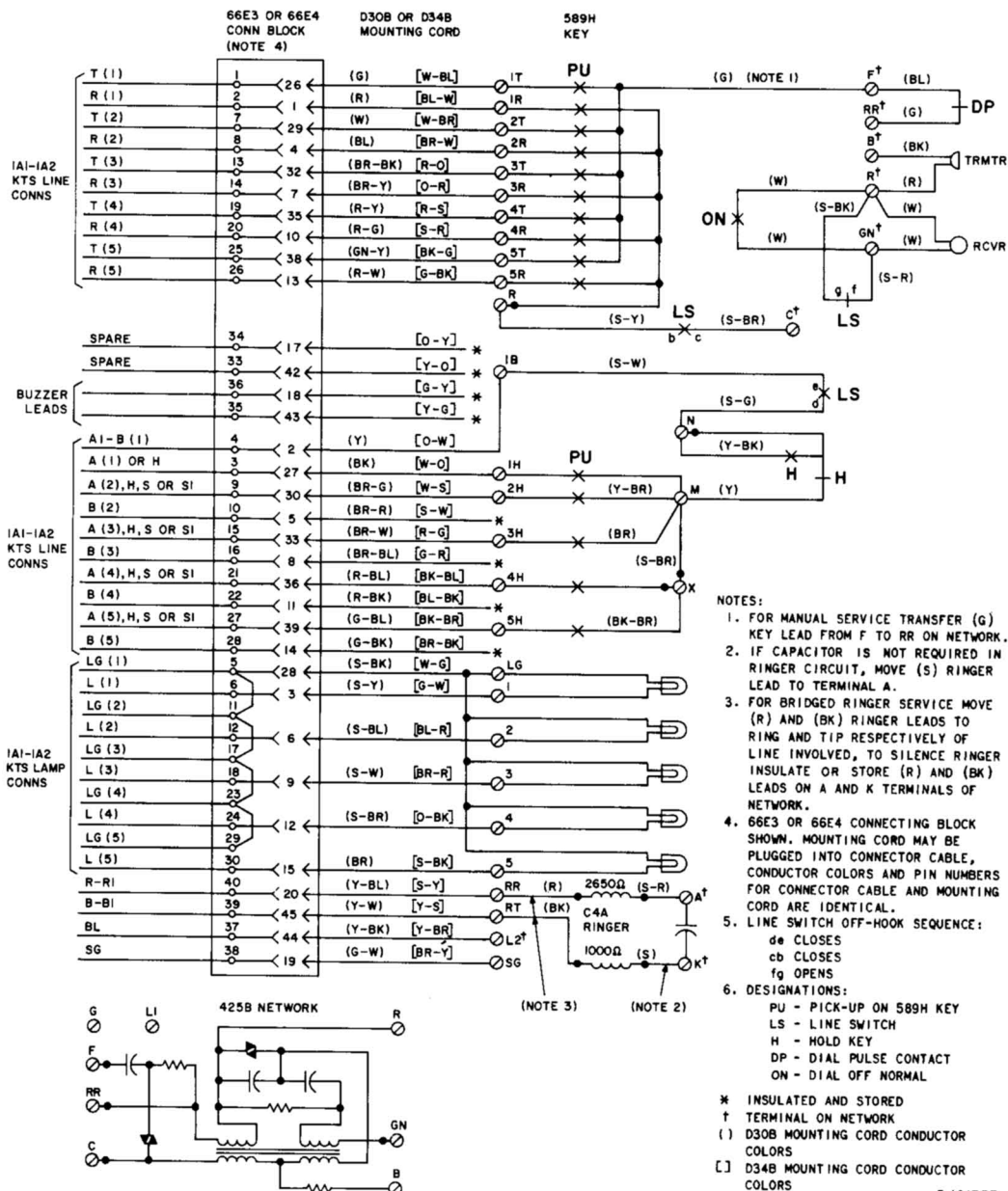


Fig. 1—564HD (MD) Telephone Set, Connections

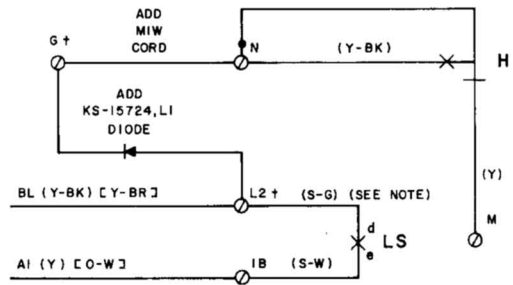
**TABLE A**  
**PICKUP-SIGNAL KEY CONVERSION**  
**564HD**

CONVERTIBLE KEY OPTIONS (NOTES)	KEY LEADS			
	BR	Y-BR	S-BR	BK-BR
HPPPPP	M	M	M	X
HPPPPS	M	M	M	SG
HPPSSS	M	M	SG	X
HPPSSS	X	M	SG	X
HPPP*P*S*	X	M	5H	N
HPP*P*P*S*	X	X	5H	N

\* These pickup key options are used on private or intercommunicating lines with the signal key common to each line. The signal key, under control of the line switch, will operate the signal circuit of each line when associated pickup key is depressed. Use S lead on 2nd, 3rd, or 4th pickup key as required.

**Notes:**

1. All convertible key positions are arranged in the factory as pickup positions. To convert a key position from pickup (locking) to signaling (nonlocking), remove the P-12A892 screw detail from plunger at the key position to be converted. Make necessary connection changes as shown in Table A. To convert a key position from nonlocking to locking, insert P-12A892 screw detail.
2. When keys are converted for signaling, the S lead of key involved provides the signal circuit and SG lead provides the common signal ground.



**NOTE :**

(S-G) LINE SWITCH LEAD INVOLVED  
IN MODIFICATION WAS ORIGINALLY  
CONNECTED TO TERMINAL N.

† TERMINAL ON NETWORK  
( ) D30B MOUNTING CORD

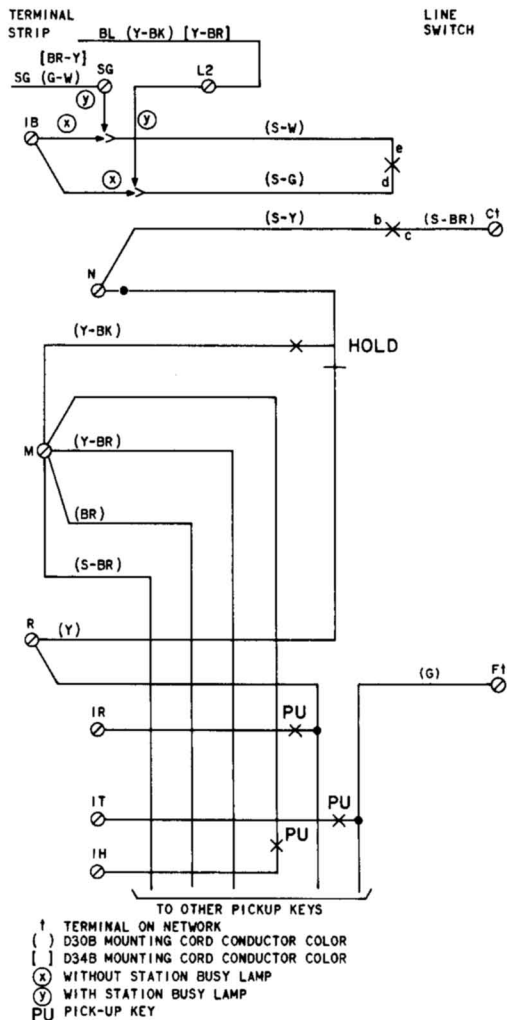
CONDUCTOR COLOR

[ ] D34B MOUNTING CORD  
CONDUCTOR COLOR

LS LINE SWITCH

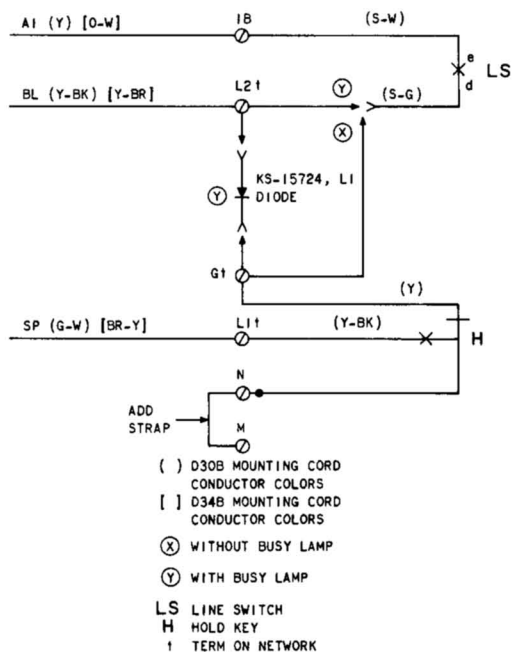
**H** HOLD KEY

**Fig. 2—Station Busy Lamp Arrangement (1A1 or 1A2 KTS Without I Hold Feature)**



MODIFICATION			
LEAD	FROM	TO	
		WITH BUSY LAMP	WITHOUT BUSY LAMP
(S-W)	IB	SG	IB
(S-G)	N	L2†	IB
(S-Y)	R	N	N
(Y-BK)	N	M	M
(Y)	M	R	R

Fig. 3—564HD (MD) Telephone Set Modified for Use With 1A KTS



MODIFICATION			
LEAD	FROM	TO	
		WITH BUSY LAMP	WITHOUT BUSY LAMP
(S-G)	N	L2†	G†
(Y)	M	G†	G†
(Y-BK)	N	L1†	L1†
(G-W) [BR-Y]	SG	L1†	L1†
STRAP		M-N	M-N
DIODE		L2†	G†

Fig. 4—Hold Arrangement With or Without Station Busy Lamp