

**SERVICE**  
**COIN COLLECTORS, SUBSCRIBER SET REQUIRED**

**220 SERIES**

**1. GENERAL**

**1.01** This section provides connection information for the 220-type coin collectors.

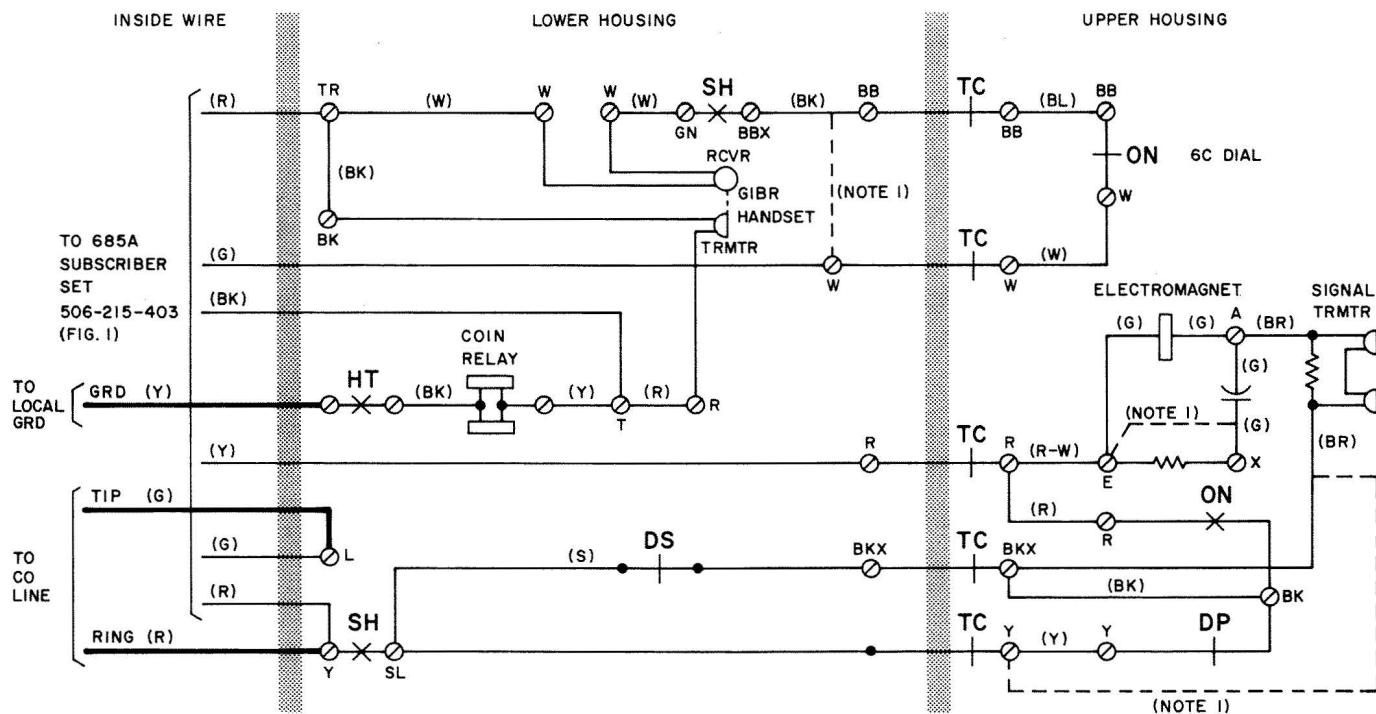
**1.02** This section is reissued to:

- Add a note, required when a 685B subscriber set is used with coin collector

- Rearrange drawings to be consistent with other practices

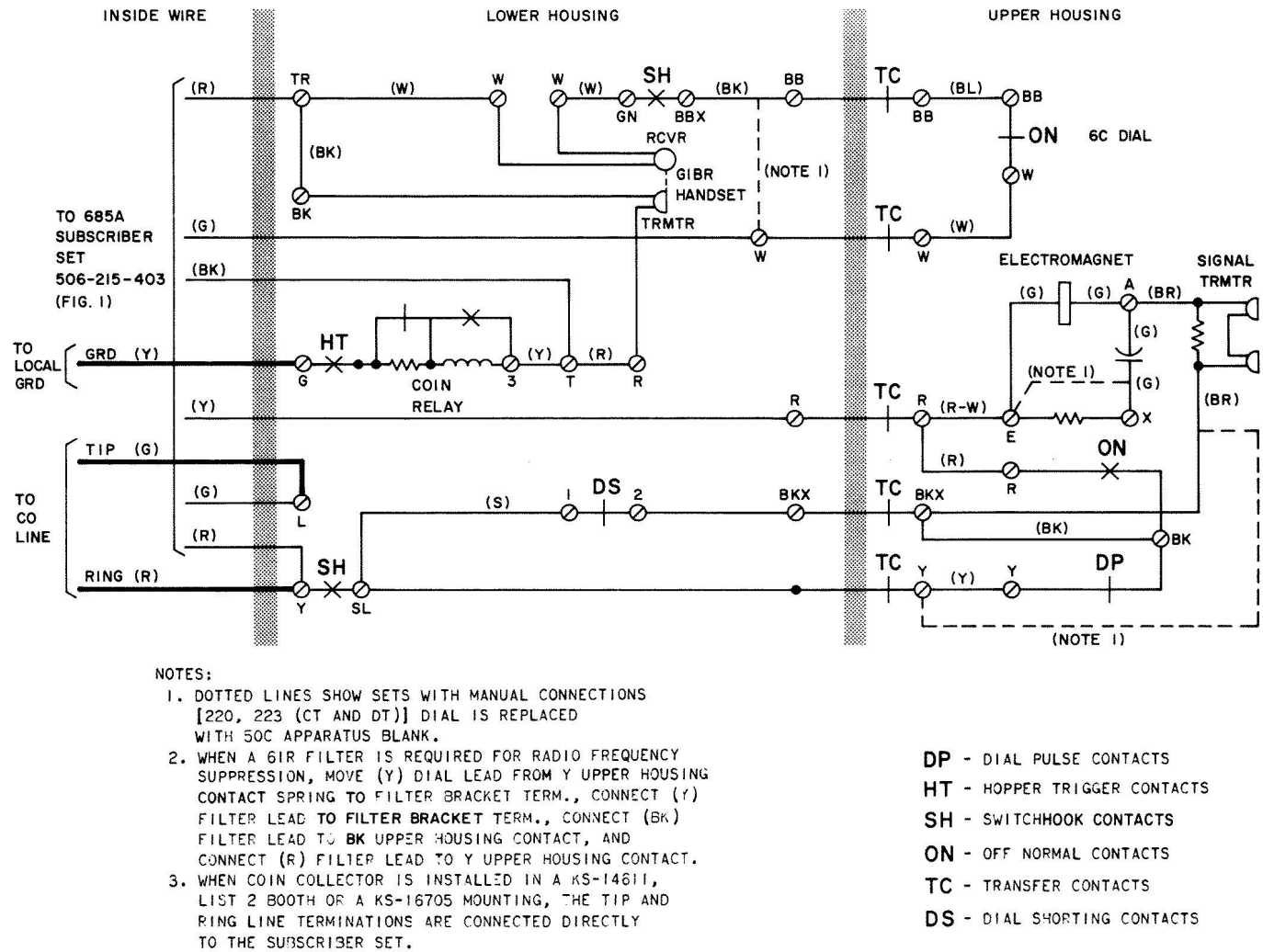
- Delete connection information for the 685A and B subscriber sets

**1.03** Refer to Section 506-215-404 for connection information for the 685A and B subscriber sets.

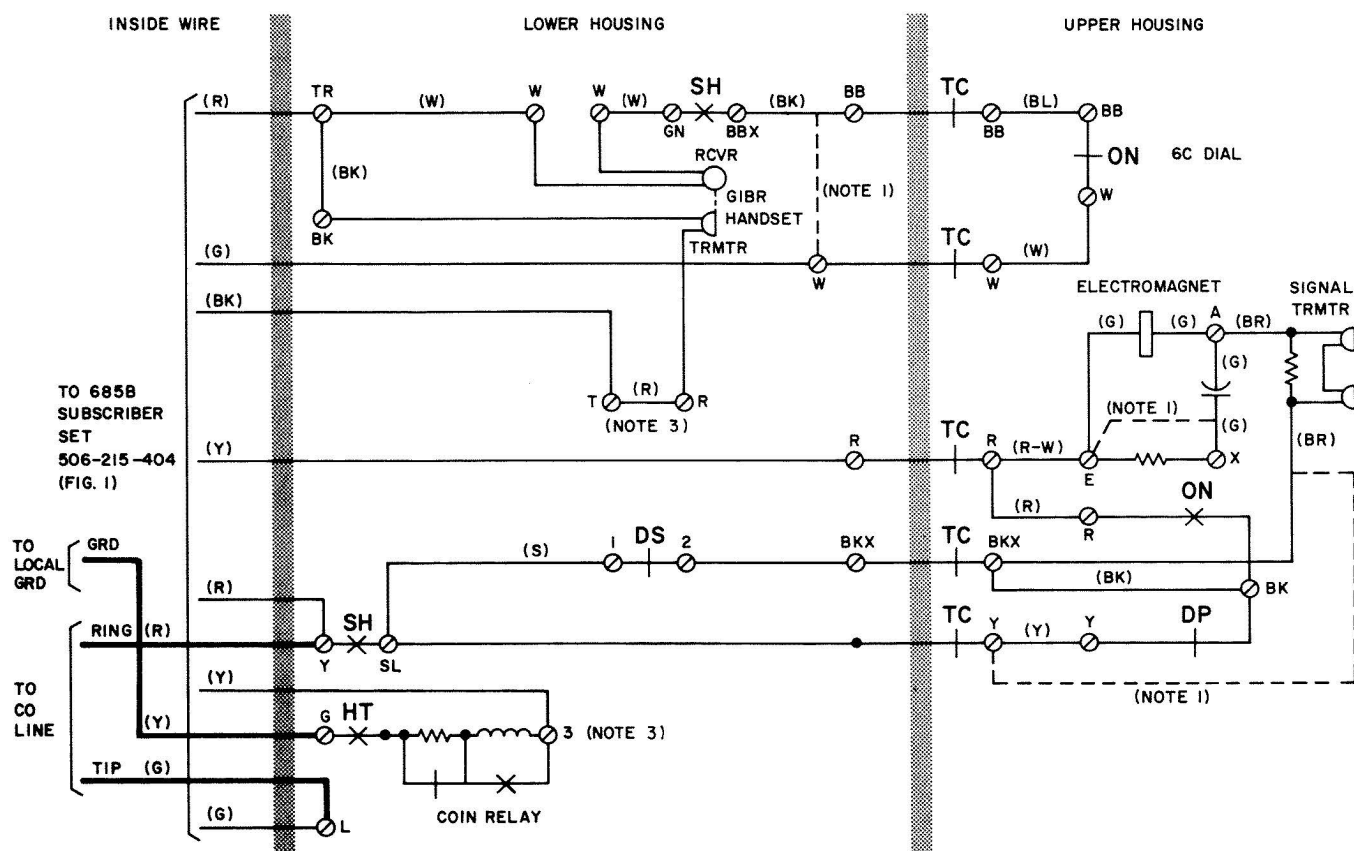


**Fig. 1—220, 223 (C, D, G, H) Coin Collectors with 685A Subscriber Set—Coin First, Connections**

TCI Library <https://www.telephonecollectors.info/>



**Fig. 3—220, 223, (CT, DT, GT, HT) Coin Collectors with 685A Subscriber Set—Coin First, Connections**



## NOTES:

1. DOTTED LINES SHOW SETS WITH MANUAL CONNECTIONS [220, 223 (CT AND DT)] DIAL IS REPLACED WITH 50C APPARATUS BLANK.
2. WHEN A GIR FILTER IS REQUIRED FOR RADIO FREQUENCY SUPPRESSION, MOVE (Y) DIAL LEAD FROM Y UPPER HOUSING CONTACT SPRING TO FILTER BRACKET TERM., CONNECT (Y) FILTER LEAD TO FILTER BRACKET TERM., CONNECT (BK) FILTER LEAD TO BK UPPER HOUSING CONTACT, AND CONNECT (R) FILTER LEAD TO Y UPPER HOUSING CONTACT.
3. REMOVE THE (Y) STRAP BETWEEN TERMINALS 3 AND T WHEN USED WITH THE 685B SUBSCRIBERS SET.

DP - DIAL PULSE CONTACTS  
 HT - HOPPER TRIGGER CONTACTS  
 SH - SWITCHHOOK CONTACTS  
 ON - OFF NORMAL CONTACTS  
 TC - TRANSFER CONTACTS  
 DS - DIAL SHORTING CONTACTS

Fig. 4—220, 223 (CT, DT, GT, HT) Coin Collectors with 685B Subscriber Set—Coin First, Connections

**SERVICE**  
**COIN COLLECTORS, SUBSCRIBER SET REQUIRED**  
**220 SERIES**

**1. GENERAL**

- 1.001** This addendum supplements Section 506-330-406, Issue 1.
- 1.002** This addendum is issued to change a terminal designation.

**2. CONNECTION INDEX**

The following change applies to Part 2 of the section.

- (a) Fig. 1 through 4, revised

In Fig. 1 through 4, change the switchhook (SH) terminal designation, between GN and BB, from BKX to BBX.