

COIN COLLECTOR DESKS
IDENTIFICATION, INSTALLATION AND MAINTENANCE

1. GENERAL

1.01 This section provides information on Coin Collector Desks manufactured by Essco Products Company.

1.02 It is reissued to show connections for the 236G Coin Collector, 1500D telephone set, AD1 telephone base and to change reference from drawing 2867A to 13071C.

2. IDENTIFICATION

2.01 Coin Collector Desks are for use in locations with little background noise and where privacy is not a problem. Four models manufactured by Essco Products Company are available.

2.02 The Coin Collector mounts on a heavy steel mounting plate concealed behind a door in the right pedestal of the desk. See figure 1. Located on top of the desk is an aluminum plate, through which the coin guage protrudes. A card frame for the instruction card is located behind the coin guage opening. Provided to the left of the aluminum plate is a button for releasing a nickel held by the holding latch. The coin return pull bucket projects through a slot in the door.

2.03 A clear plastic sign reading Public Telephone and a chair are furnished with each desk.

2.04 Essco desks may be ordered from the Western Electric Company as follows:

(Quantity) Desk, Coin Collector, Essco, Model CD-3, Equipped per Dwg. 13071C (specify desk color or wood grain and telephone set type and color)

(Quantity) Desk, Coin Collector, Essco, Model MD-7, MD-8 or MD-9, Equipped per Dwg. 13071C, (specify desk wood grain and telephone set type and color)

2.05 The Essco Desks will be shipped with the Coin Collector modified and mounted.

2.06 A modified 500 type telephone set is provided with each desk.

3. ESSCO DESK MODEL CD-3
FIGURE 2

3.01 The Model CD-3 desk is constructed of extruded aluminum structural parts including the legs and decoration. Side panels and top are of plastic laminates available in most colors or wood grains. Unit size is 30" high x 36" wide x 24" deep. The shipping weight is 65 pounds.

4. ESSCO DESK MODEL MD SERIES,
FIGURES 3, 4, AND 5

4.01 Three models in the MD series are identical except for top design. They are constructed of par-wood and high pressure laminate. Standard colors available are dark walnut, blond birch and mahogany. Other wood grain colors require a special order. Unit size is 30" high

x 48" wide x 24" deep. The desk weight is 162 pounds.

4.02 The Model MD-7 desk Figure 3, has a rectangular top, Model MD-8 Figure 4, a concave top and Model MD-9 Figure 5, a convex top.

4.03 The legs of all models are equipped with floor levelers. The doors are equipped with a magnetic latch.

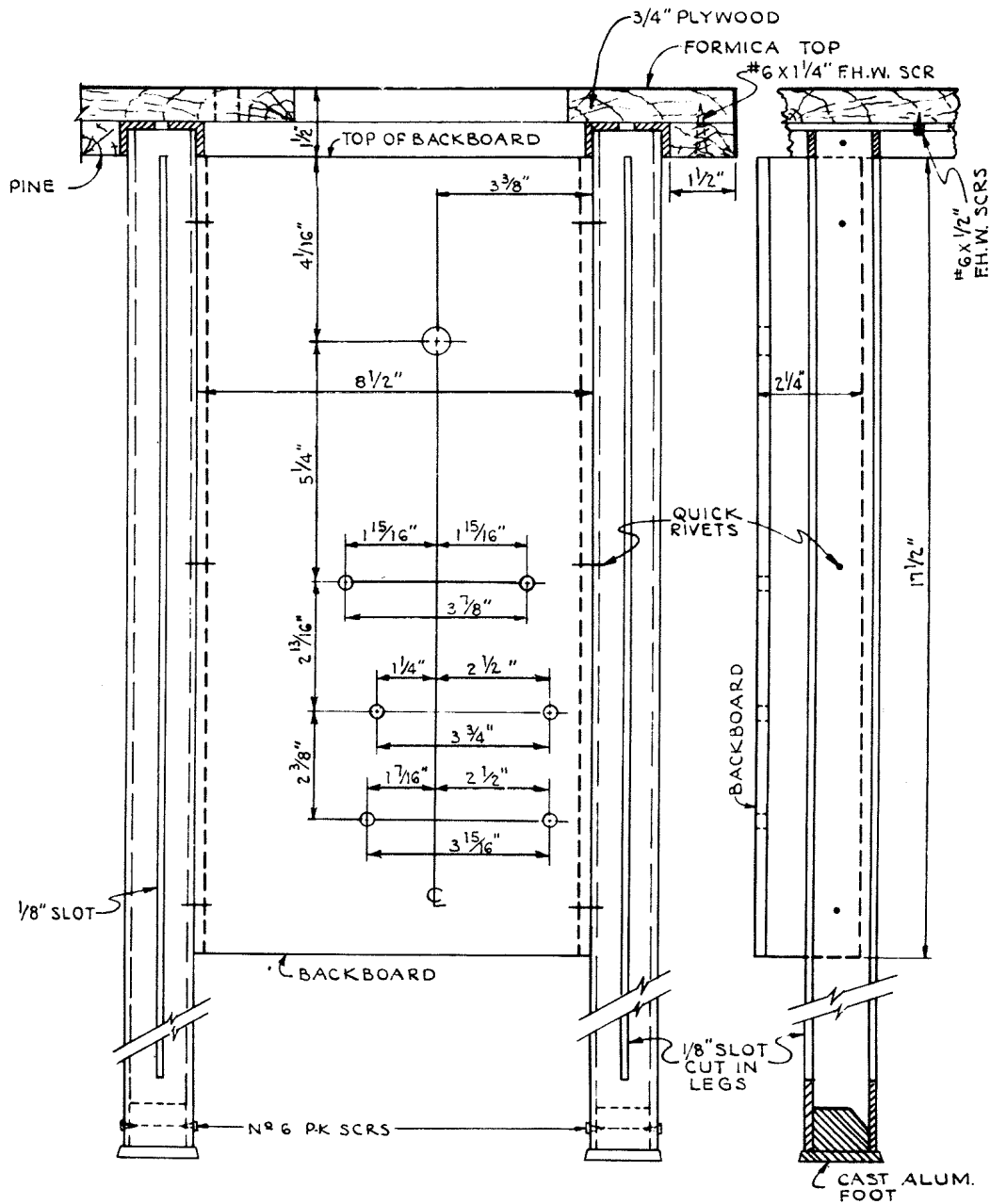


FIGURE 1 BACKBOARD FOR ESSCO DESK (MODEL CD 3 SHOWN)



FIGURE 2, ESSCO DESK MODEL CD-3



FIGURE 3, ESSCO DESK MODEL MD-7



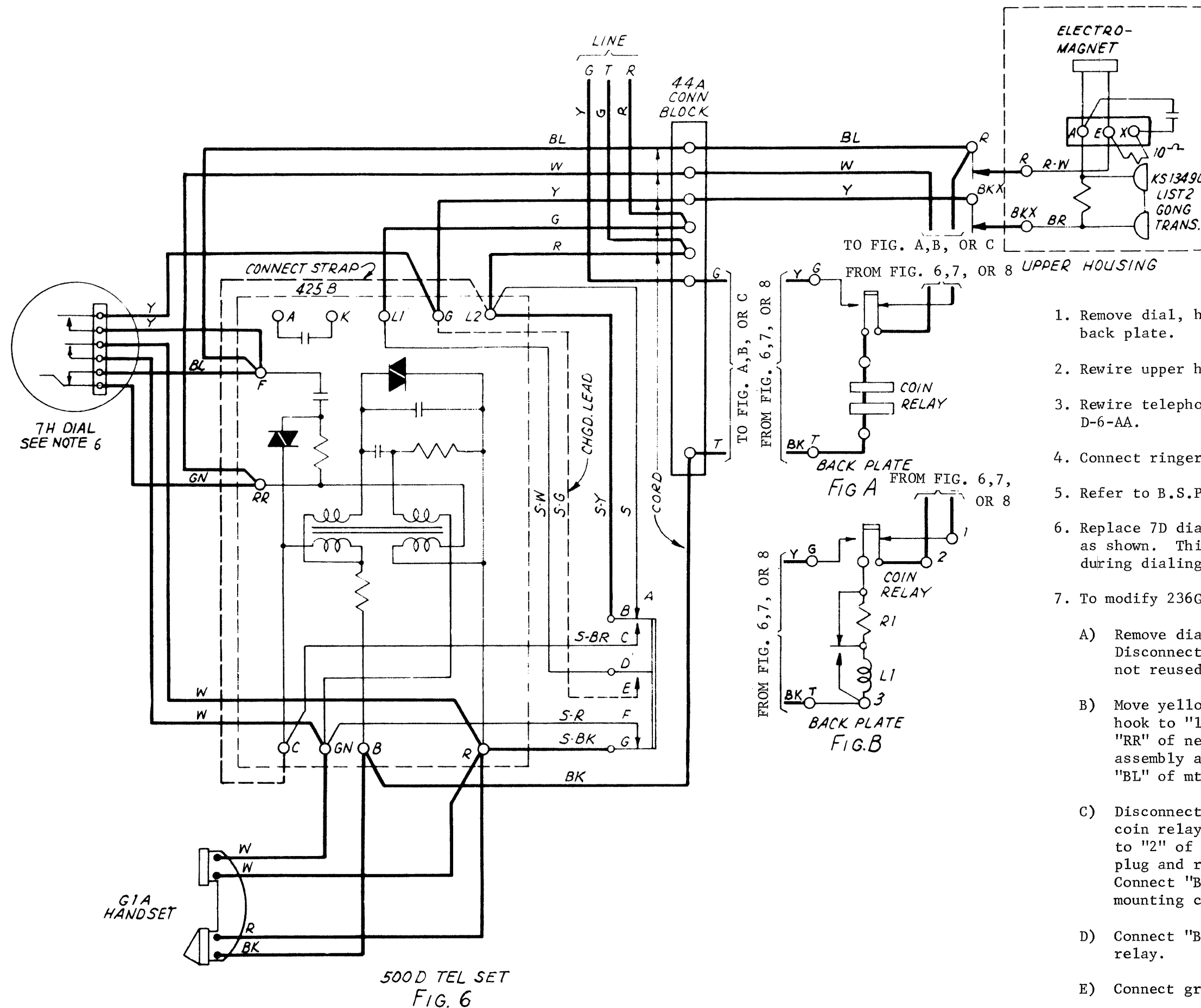
FIGURE 5, ESSCO DESK MODEL MD-9

5. INSTALLATION

- 5.01 Refer to the appropriate Bell System Practice for the type of station wire to be used and method of installation.
- 5.02 Make wiring connections to the Telephone Set in accordance with Figure 6, 7 or 8.
- 5.03 Perform all standard coin tests as required in Bell System Practice 506-110-200.

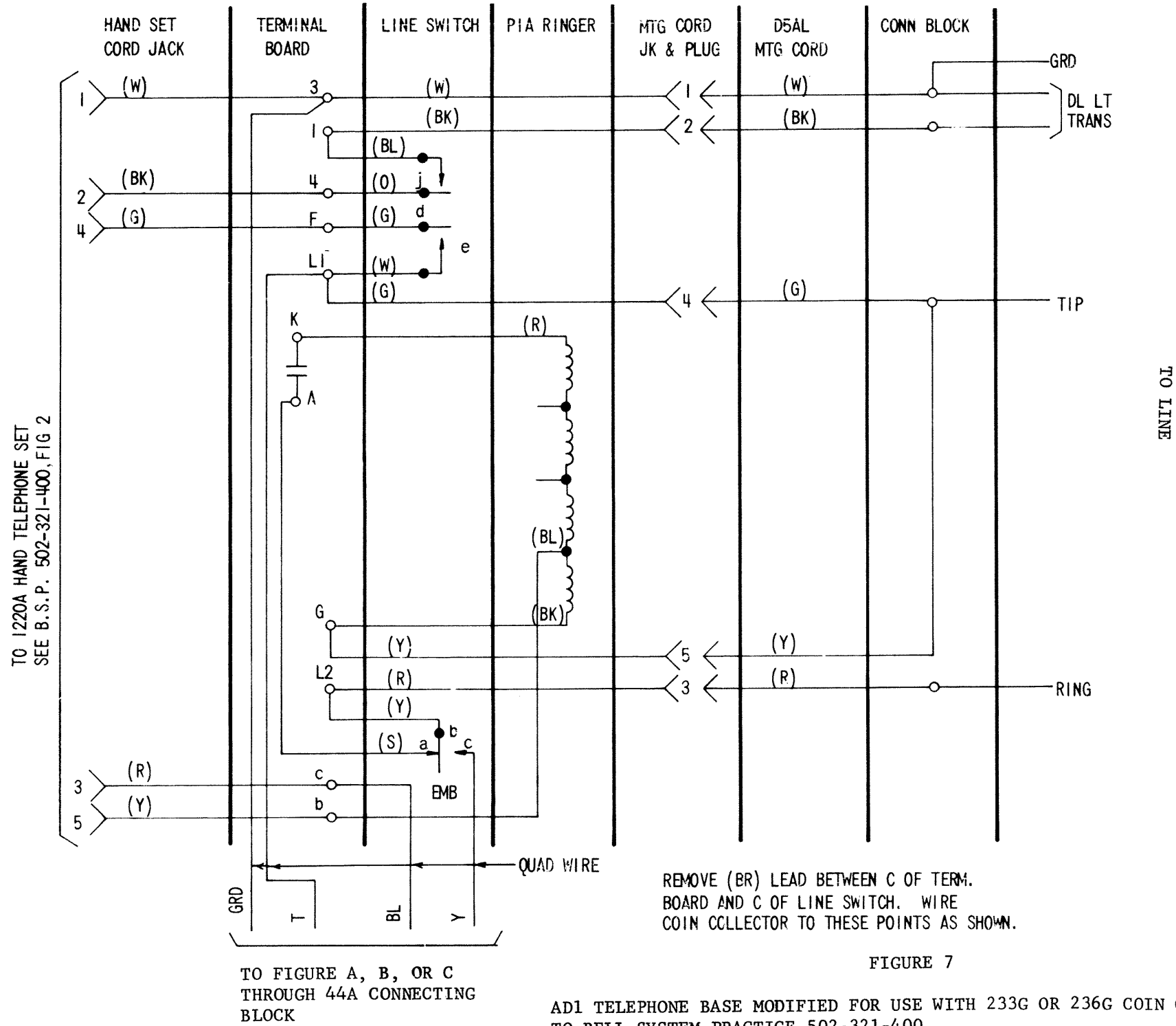
6. MAINTENANCE

- 6.01 Field maintenance of Essco desks will be limited to cleaning. The manufacturer recommends washing with a mild soap and water.
- 6.02 For maintenance of the Coin Collector and Telephone Set refer to the Sections covering Coin Collectors and Telephone Sets.



NOTES

1. Remove dial, handset & associated wiring from back plate.
2. Rewire upper housing as shown.
3. Rewire telephone set-leads, replace cord use D-6-AA.
4. Connect ringer standard.
5. Refer to B.S.P. 506-319-408 & 506-319-409.
6. Replace 7D dial with 7H and connect yellow leads as shown. This shorts out the Electro-magnet during dialing.
7. To modify 236G for coin collector desk:
 - A) Remove dial, handset, ringer & network. Disconnect & insulate all associated wiring not reused.
 - B) Move yellow of connector from "SL" of switch hook to "1" of coin relay. Move red from "RR" of network to "Y" of terminal plate assembly and "E" of Electro-Magnet. Connect "BL" of mtg. cord to "1" of coin relay.
 - C) Disconnect "BK" of connector from "2" of coin relay. Connect white of mounting cord to "2" of coin relay. Disconnect violet of plug and red of ringer from "N" term strip. Connect "BK" of connector and yellow of mounting cord to "N" terminal strip.
 - D) Connect "BK" of mounting cord to "3" of coin relay.
 - E) Connect ground of line to "G" of coin relay.



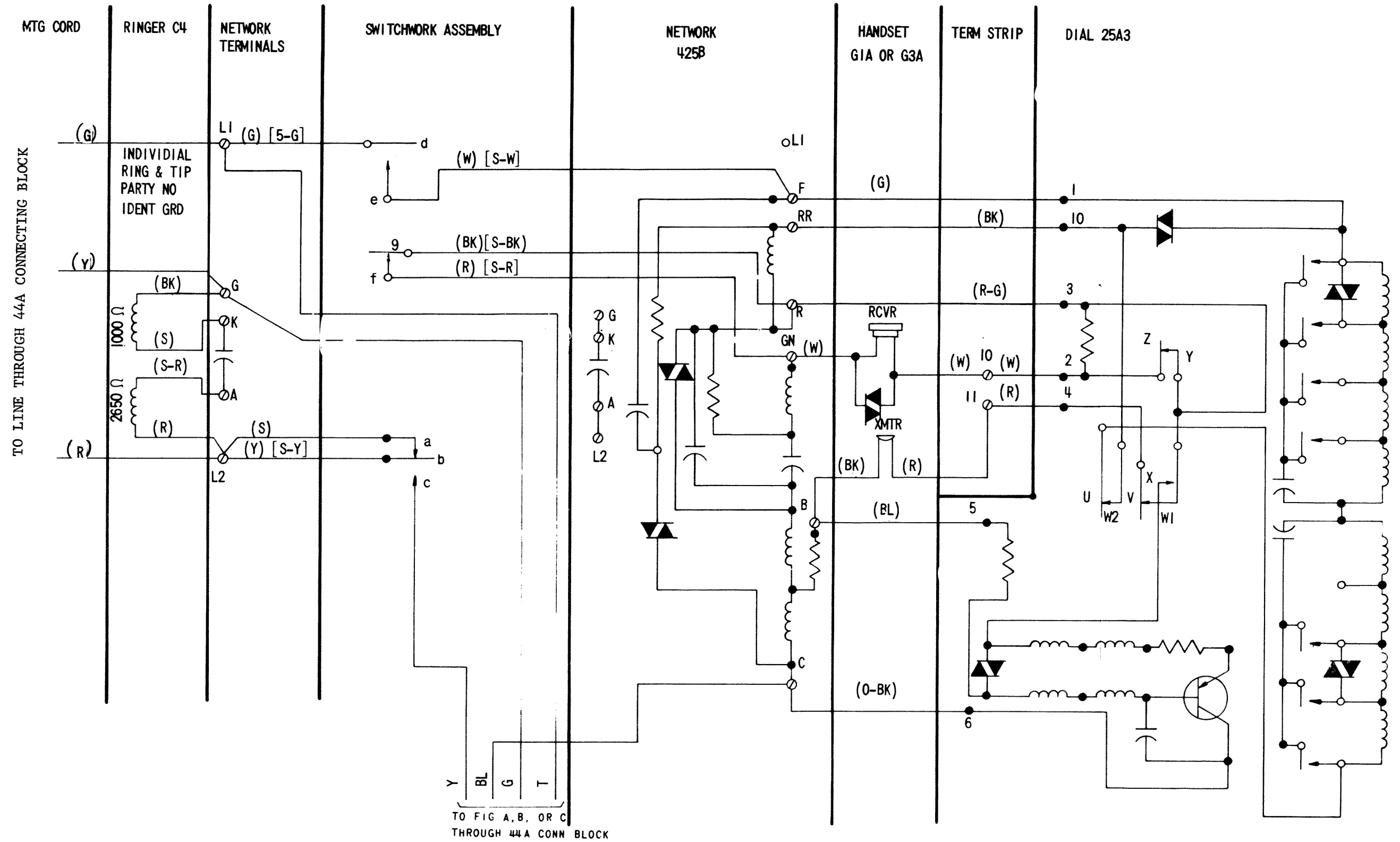


FIGURE 8

1500D TELEPHONE SET MODIFIED FOR USE WITH 233G OR 236G COIN COLLECTOR
REFER TO BELL SYSTEM PRACTICE 502-510-431

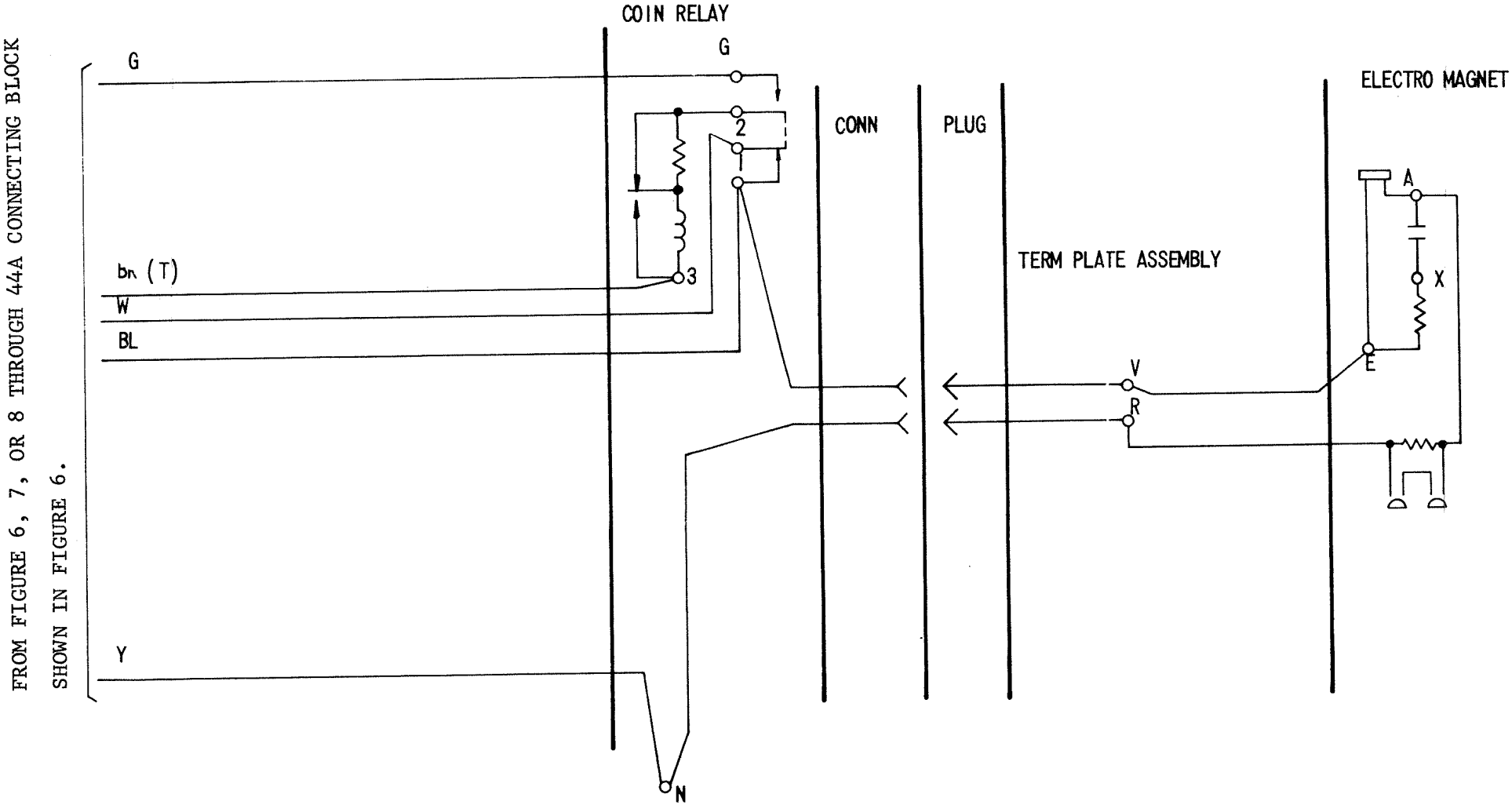


FIGURE C

236G COIN TELEPHONE MODIFIED PER NOTE 7 REFER TO BELL SYSTEM PRACTICE 506-332-400