

5 TO 8-LEVEL UNIVERSAL STATION CONVERTERS

INSTALLATION

CONTENTS	PAGE
1. INTRODUCTION	1
2. INSTALLATION	1
UNPACKING	1
RECEIVING SELECTOR INSTALLATION - SIGNAL-TO- TAPE CONVERTER	2
TAPE READER INSTALLATION - TAPE-TO-TAPE CONVERTER	3
TAPE PUNCH INSTALLATION	4
MODULE INSTALLATION	4
POWER, SIGNAL LINE, AND RE- MOTE CONTROL CONNECTIONS	6
A. External Power Line	6
B. External Signal Line	6
C. Remote Control Connections	8
TAPE ROUTING	8

1. INTRODUCTION

1.01 This section contains installation procedures for the 5 to 8-Level Signal-to-Tape and 5 to 8-Level Tape-to-Tape Station Converter Sets. Wiring information, if necessary, may be found in the appropriate section.

1.02 The 5 to 8-Level Signal-to-Tape and 5 to 8-Level Tape-to-Tape Station Converter Sets consist, basically, of the following electro-mechanical and electronic apparatus (see Figures 1 and 2).

- (a) A receiving selector with associated base and motor unit. (Used with Signal-to-Tape equipment.)
- (b) A 5-level tape reader (tape transmitter) with associated base and motor unit. (Used with Tape-to-Tape equipment.)

- (c) A parallel input tape punch (multi-magnet non-typing reperforator) with associated base and motor unit.
- (d) A tape winder mechanism. (Available as an optional feature for Tape-to-Tape and Signal-to-Tape equipment.)
- (e) A diode matrix circuit module.
- (f) A transfer tree circuit module.
- (g) A control circuit module.
- (h) A center unwind reel mechanism. (Available as an optional feature on Tape-to-Tape equipment.)
- (i) A cabinet assembly with the necessary electrical, tape handling, and mounting facilities for the above components.

2. INSTALLATION

UNPACKING

2.01 The Converter Set is packed in a heavy cardboard, wooden reinforced box. To unpack the Set, proceed as follows:

- (a) Detach cover panel from the box by removing the nails along the bottom two sides and the top.
- (b) Remove the nails which fasten the bottom of the side panels and rear panel to the base.
- (c) Carefully lift the box assembly from the base, uncovering the cabinet.
- (d) Remove all wooden spacer blocks which hold floating cabinet members in a stationary position. Remove any packing tape which may hold the cabinet door and front sliding panel in place.
- (e) Remove all packed components from inside the cabinet.

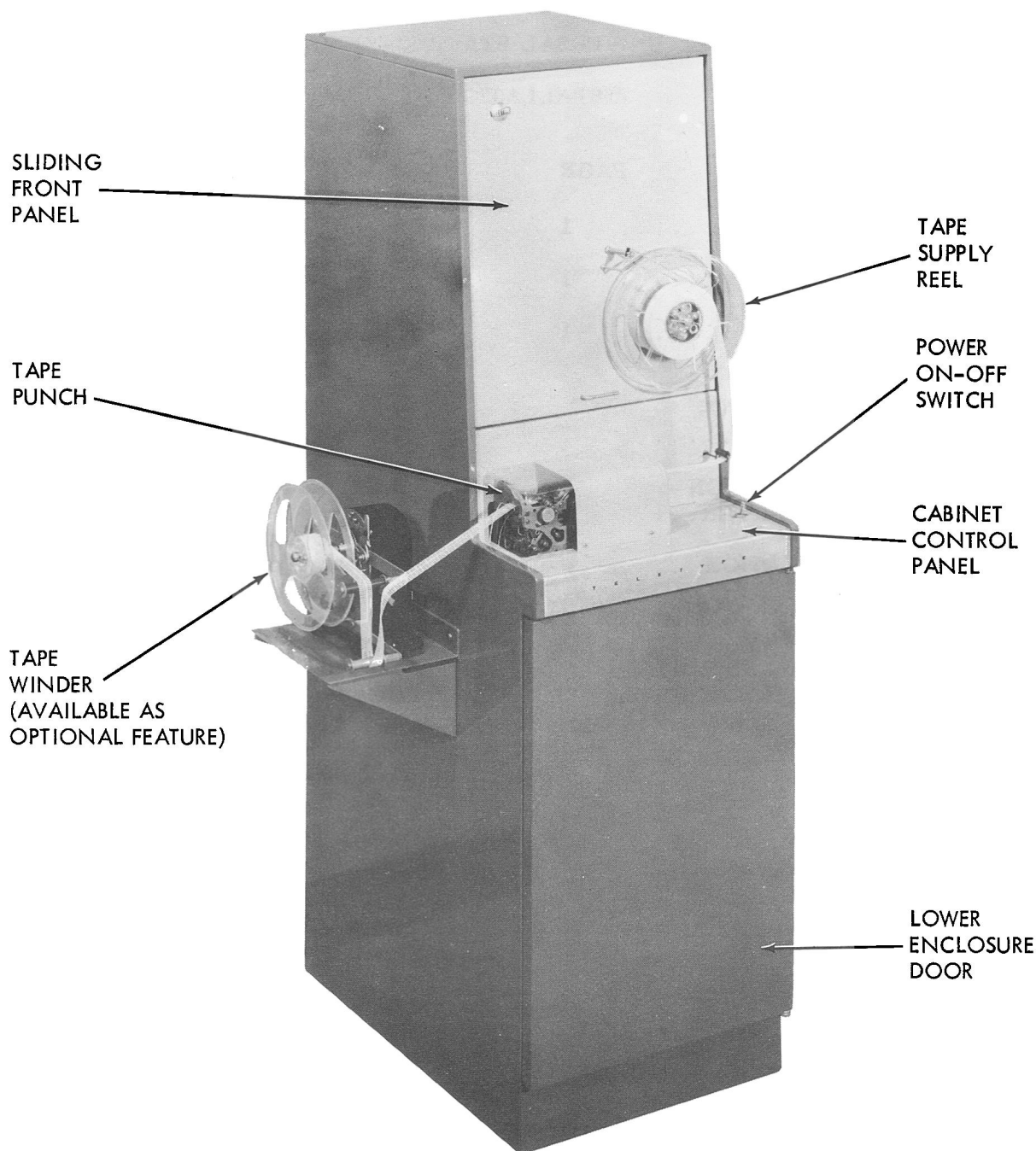


Figure 1 - 8- to 5-Level Signal-to-Tape Station Converter Set, Front View

RECEIVING SELECTOR INSTALLATION-SIGNAL-TO-TAPE CONVERTER (See Figure 3)

2.02 To install the receiving selector, proceed as follows:

- (a) Unpack the receiving selector set, being careful not to damage the unit.
- (b) Install the unit on the mounting posts provided on the cabinet sliding frame. Install the unit so that the selector is toward the left of the cabinet when viewing the cabinet from the front.
- (c) Make sure the 36 pin connector mates securely on the side of the unit. Connect the 3 pin AC plug.

TAPE READER INSTALLATION - TAPE-TO-TAPE CONVERTER (See Figure 4)

2.03 To install the tape reader, proceed as follows:

- (a) Place the reader on the bracket protruding from the upper portion of the cabinet

front panel, making sure that the 36 pin connector engages its receptacle and is seated firmly.

- (b) Secure the reader with three screws and lock washers. Do not tighten screws at this time.

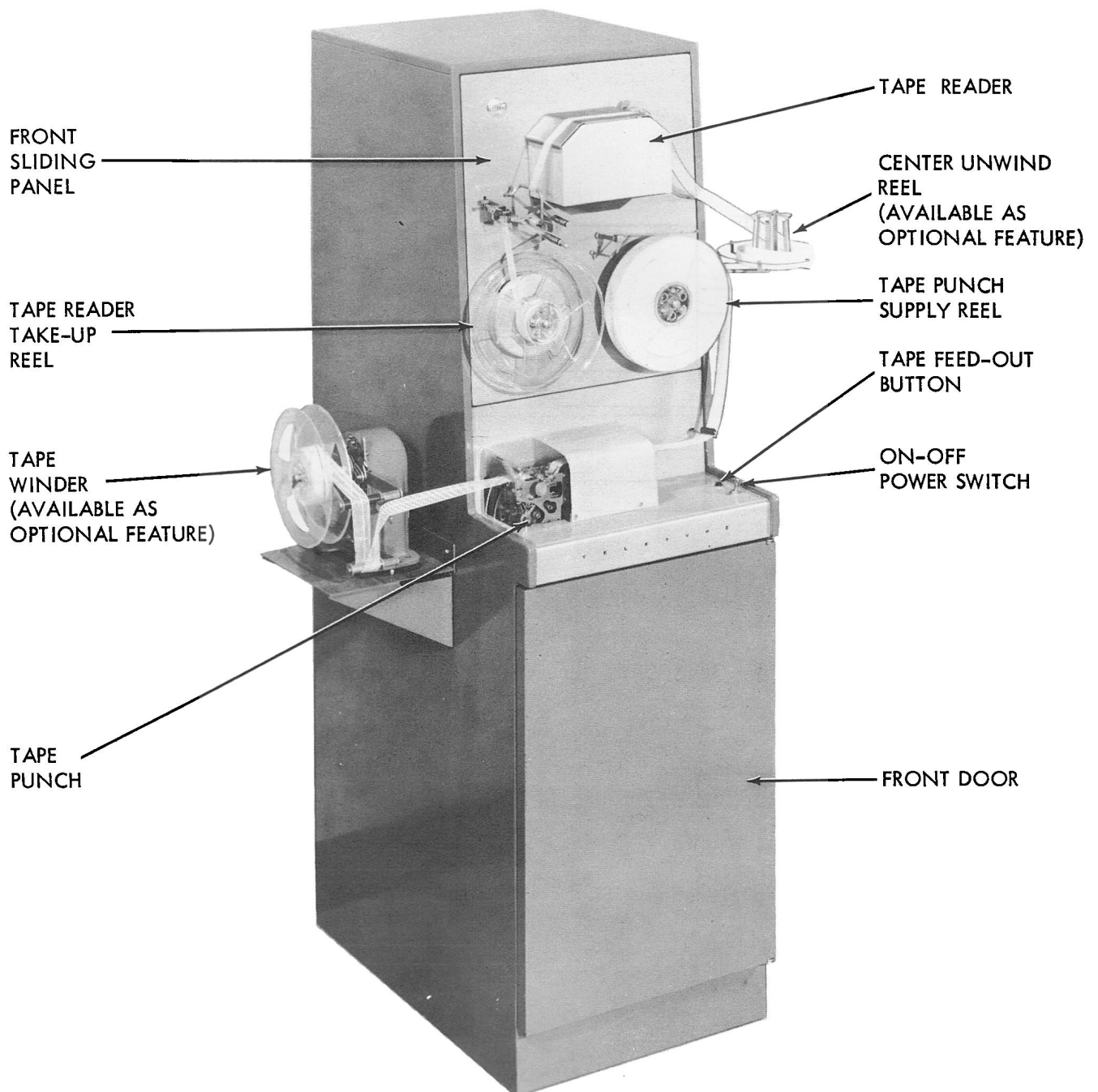


Figure 2 - 5 to 8-Level Tape-to-Tape Station Converter (Front View)

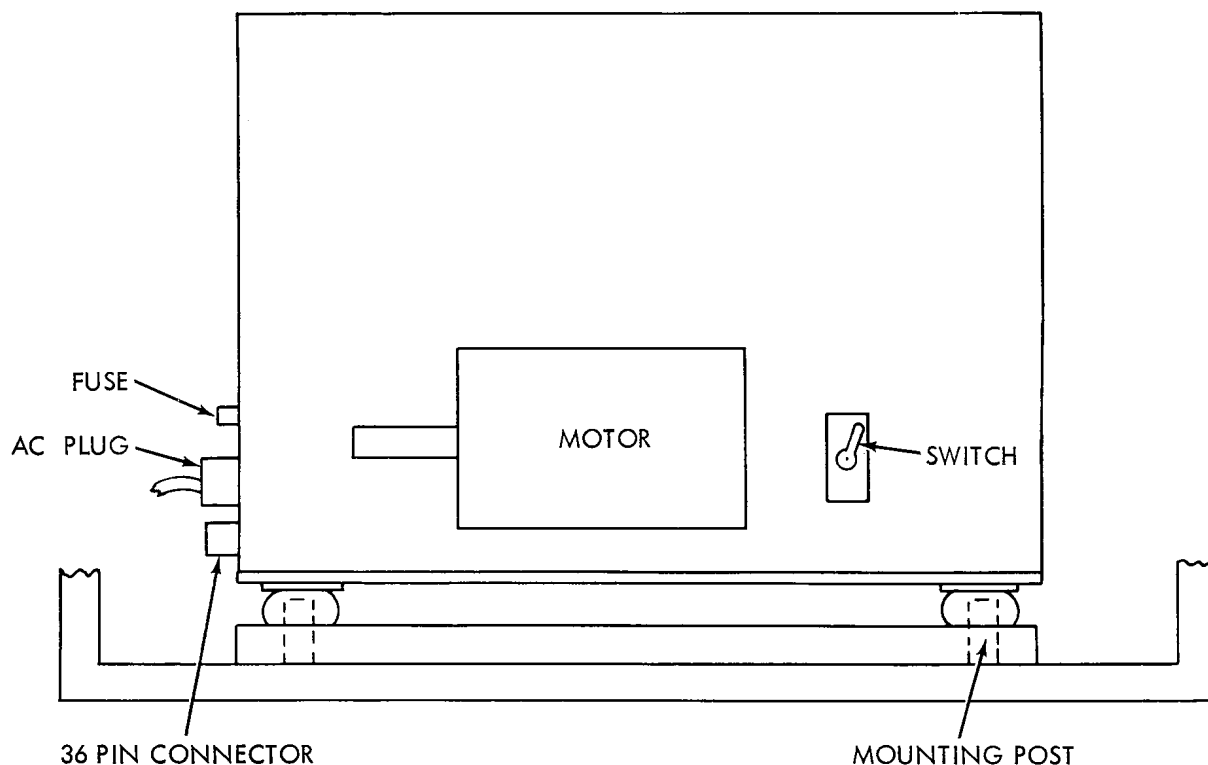


Figure 3 - Rear View, Receiving Selector Installation

(c) With motor unit in place, position reader toward the right or left until there is a barely perceptible backlash between the mating gears. Tighten mounting screws.

(d) Slide front snap panel in place, and install cover plate on tape reader. Cover plate spring clips should engage top plate. Lower left end of cover plate to engage detents on reader front and rear plates.

TAPE PUNCH INSTALLATION (See Figure 5)

2.04 To install the tape punch, proceed as follows:

(a) Unpack the tape punch set, being careful not to damage the unit.

(b) Remove the TP-194568 front panel from the cabinet.

(c) Working from the rear of the cabinet, place the tape punch unit over the two bosses provided in the insert on the cabinet shelf. Be sure the metal chad disposal chute on the punch fits directly over the polyethylene chad disposal pipe in the cabinet.

(d) Connect the AC plug and control plug at the rear of the unit.

MODULE INSTALLATION

2.05 Electronic modules are normally shipped mounted in place, and no installation, as

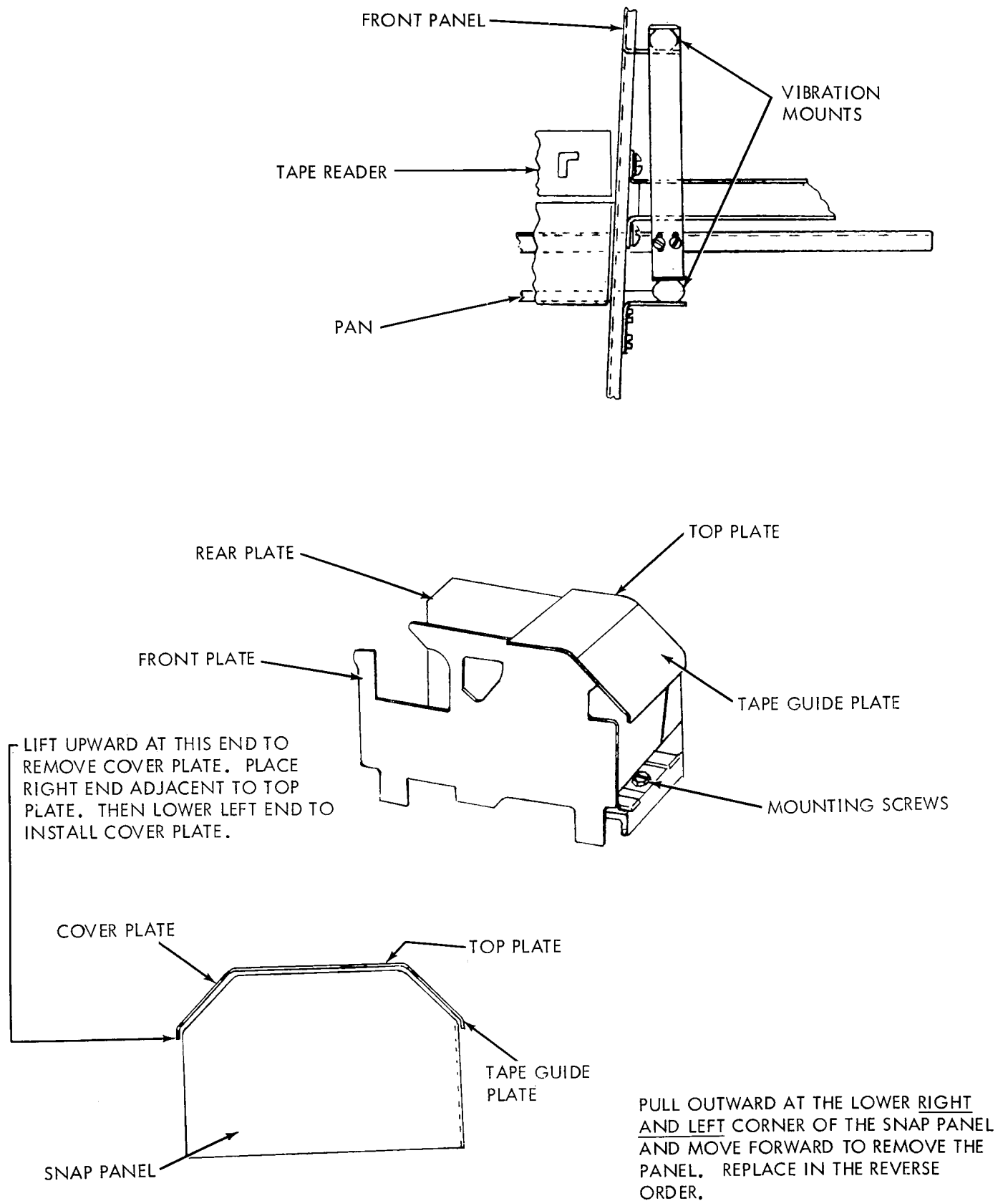


Figure 4 - Tape Reader Installation

such, is necessary. However, before placing the equipment into operation check the following:

- (a) Modules are in their correct locations (see Figure 6).
- (b) Modules are securely locked in place.
- (c) Electronic plugs are firmly inserted into module receptacles.

POWER, SIGNAL LINE, AND REMOTE CONTROL CONNECTIONS

A. External Power Line (See Figure 7)

2.06 A power cord is provided with the cabinet. Plug the female end of the cord into the recessed connector on the cabinet service panel. Route the other end of the cord out

through the access hole at the rear of the cabinet to 115 volt AC power.

B. External Signal Line - Signal-to-Tape Converter (See Figure 8)

2.07 Connect the external 20 milliamperes signal line as follows:

- (a) Plus (+) wire to terminal DD7 on the cabinet service unit.
- (b) Minus (-) wire to terminal BB7 on the cabinet service unit.

2.08 If the external signal line current is 60 milliamperes, replace the 450 ohm resistor on the TP-193440 circuit card in the selector magnet driver assembly with a 140 ohm resistor (TP-181668). The selector magnet

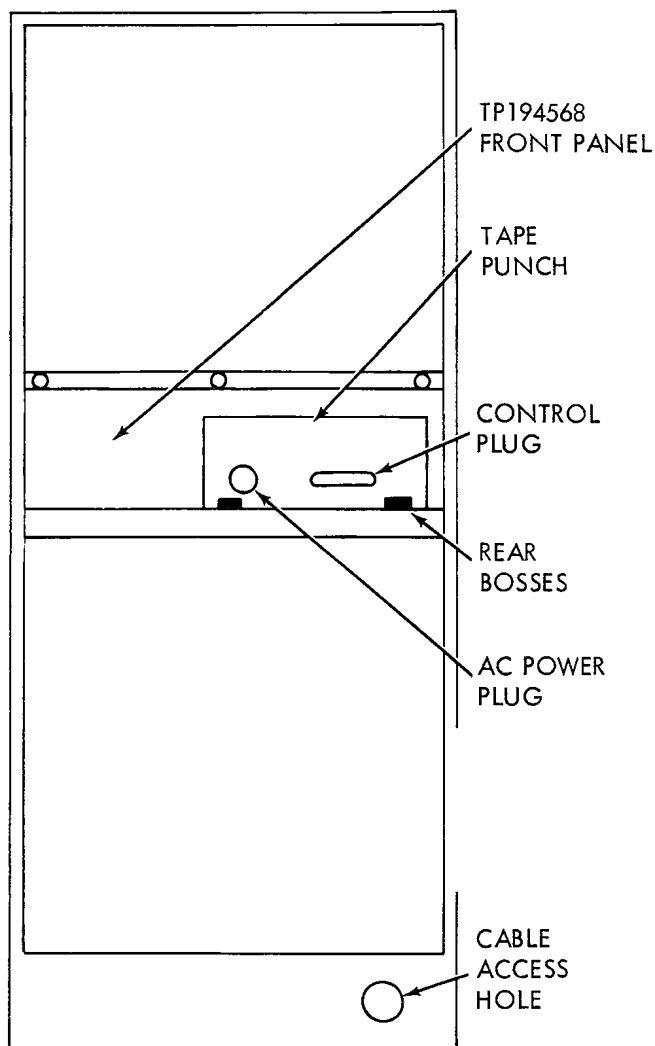


Figure 5 - Rear View, Tape Punch Installation

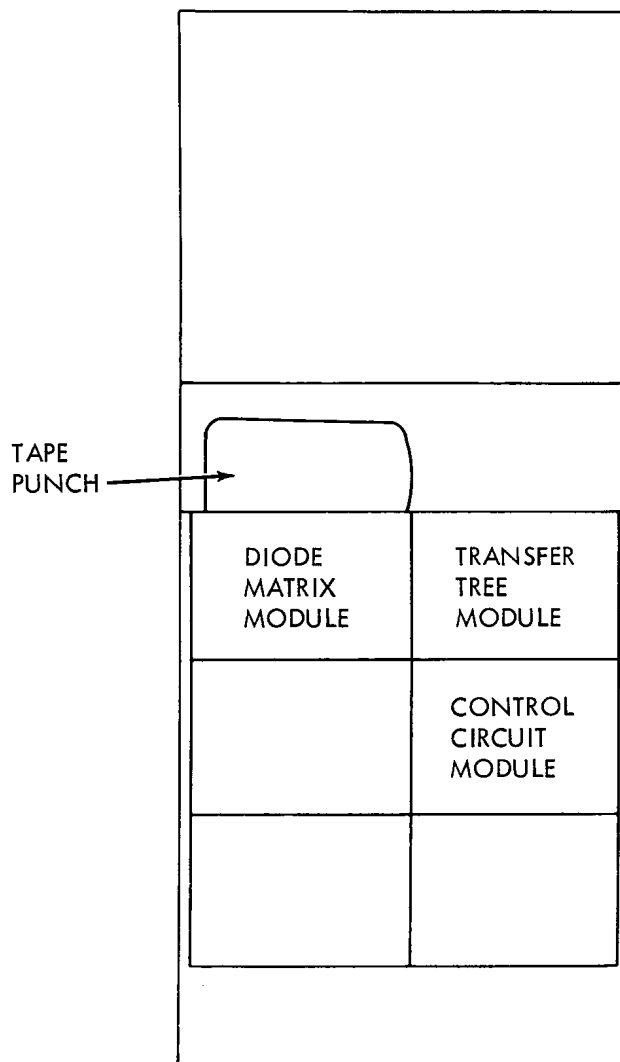


Figure 6 - Module Installation

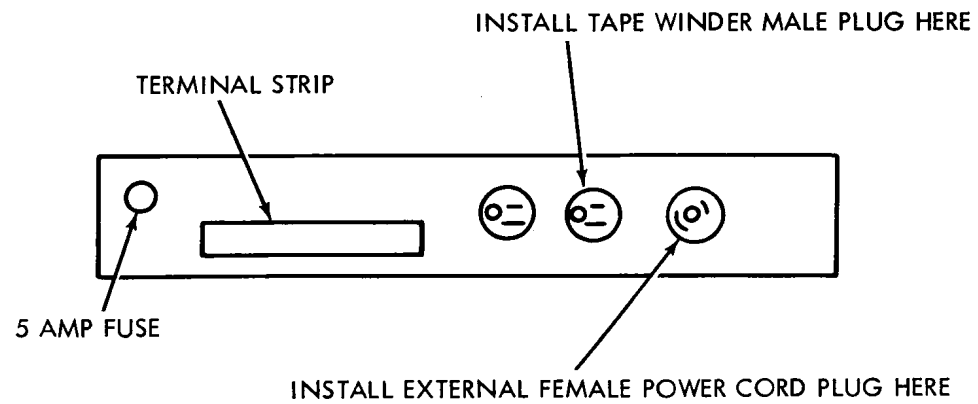


Figure 7 - Cabinet Service Panel

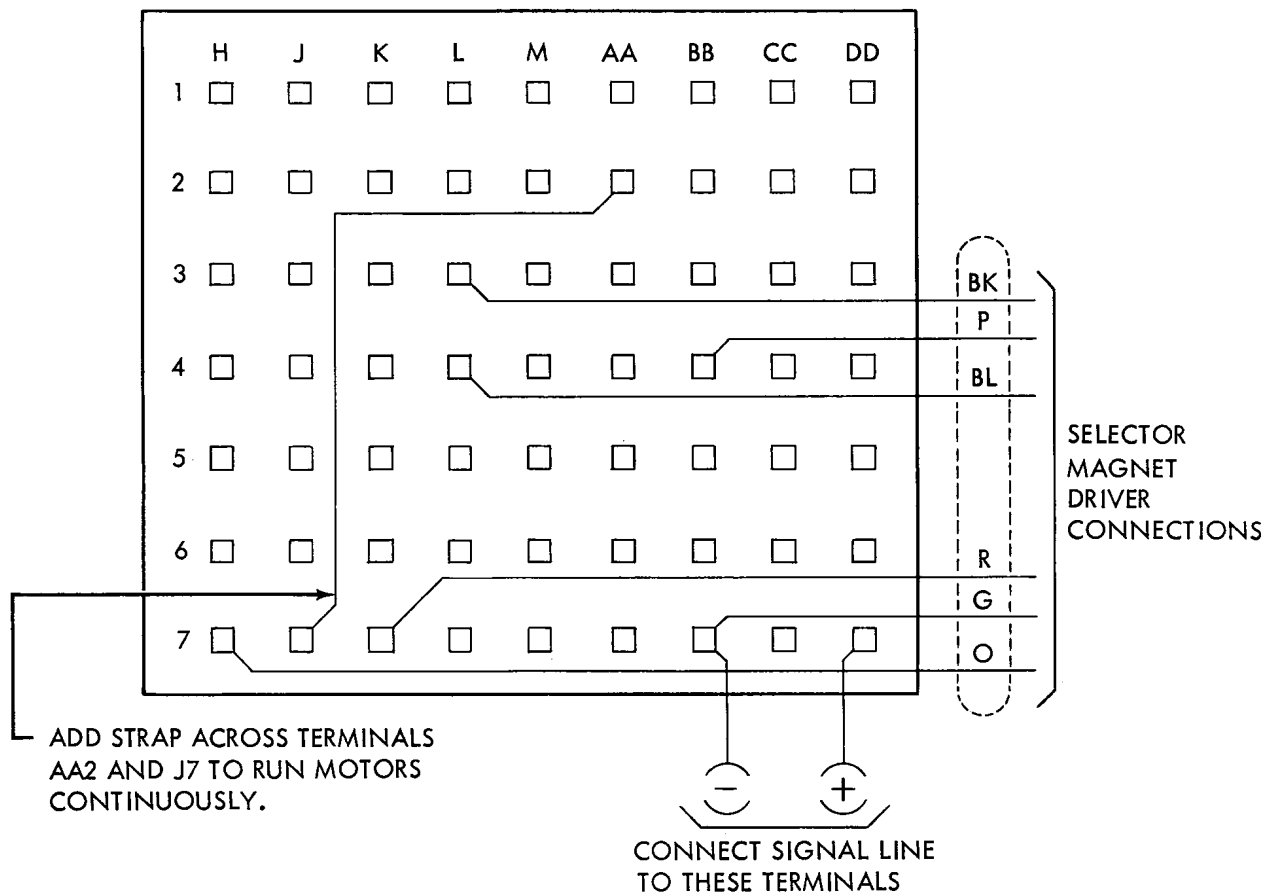


Figure 8 - Connections to Service Unit

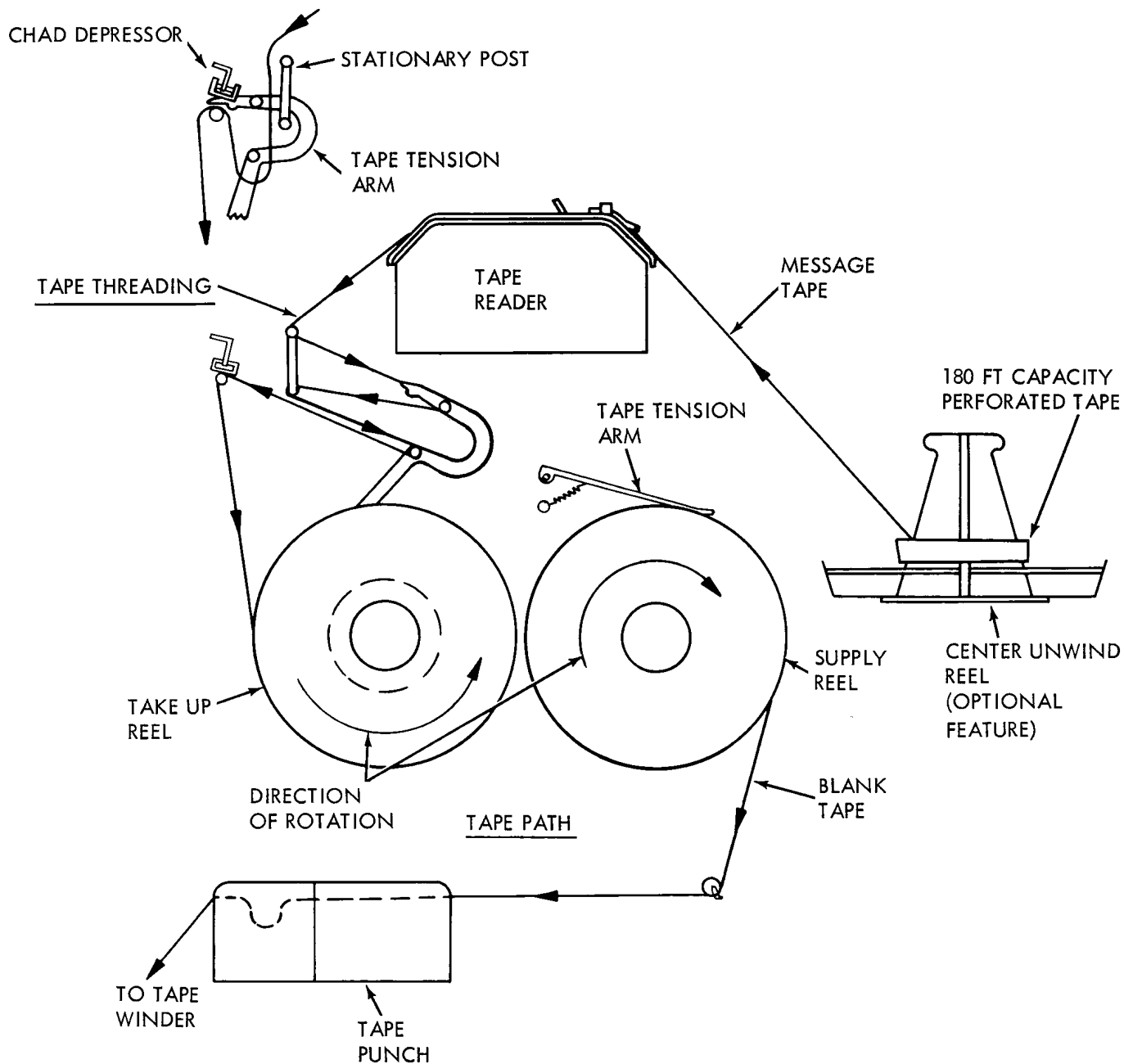


Figure 9 - Tape Routing - Tape-to-Tape

driver assembly is mounted on the electrical service unit located at the rear of the cabinet.

Note: Instead of changing the 450 ohm resistor, the TP-193440 circuit card may be replaced with a TP-193441 circuit card.

C. Remote Control Connections - Signal-to-Tape Converter (See Figure 8)

2.09 In applications where remote control of the Converter Set is desired, make the following connections:

(a) The circuit is wired for stunt-box control of the feed-out relay through the unblind relay "UB". If external control is desired disconnect the lead between TB-K6 and TB-AA7 and connect the external contact to these terminals. (See WD 6091.)

(b) Motor control lead to terminal AA2.

TAPE ROUTING

2.10 Install a reel of one inch (1") wide tape on the tape supply reel and thread the tape as shown in Figures 9 and 10.

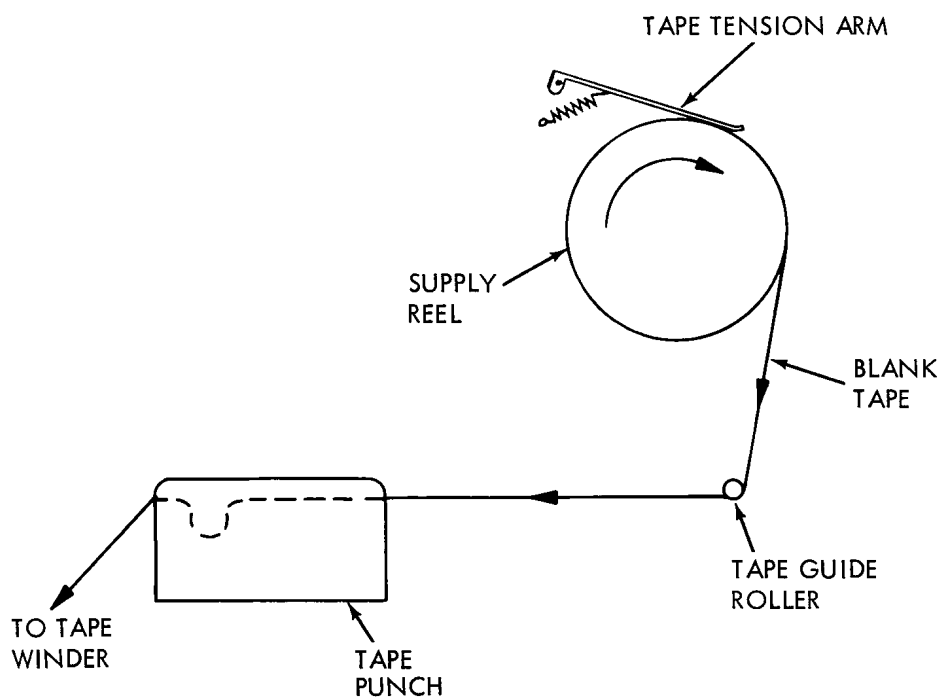


Figure 10 - Tape Routing (Signal-to-Tape)