

## TELEPHONE SETS

### 900A, 900B, 2900A, AND 2900B

#### 1. GENERAL

1.01 This section contains identification, installation, and connection information for the 900A (MD), 900B (Fig. 1) and 2900A (MD), 2900B (Fig. 2), DESIGN LINE\* telephone (*Exeter*) sets.

\*Trademark of AT&TCo.

1.02 This section is reissued to:

- Add 900B5-58 and 2900B5-58 telephone sets
- Show all 900A- and 2900A-type telephone sets MD
- Remove information on 225A adapter
- Add 1A converter
- Add new Fig. 3 and 4
- Revise Fig. 6, 7, 8, 9, 10, and 11
- Add Tables C and E

**Warning: Telephone apparatus or wiring shall not be installed in a location where minimum separation from other wiring as specified in Section 460-300-149 cannot be maintained.**

1.03 The 900B- and 2900B-type telephone sets are like the 900A- and 2900A-type sets, except that the B codes use a new line switch [identified by two extra (BL and BL-W) leads]. The components mount directly to the plastic base and the ringer is adjustable from the set bottom. Refer to Fig. 7 and 10 for wiring information.

1.04 The customer's premises must be properly wired with an appropriate connecting block



Fig. 1—900A and B DESIGN LINE Telephone Set



Fig. 2—2900A and B DESIGN LINE Telephone Set

or jack in order to accept the D4BU-29 plug-ended mounting cord.

#### 2. IDENTIFICATION

2.01 The 900-type (rotary dial) and 2900-type (TOUCH-TONE® dial) equipped telephone sets are new DESIGN LINE telephone sets being made available to the customer. The customer buys the housing and handset from the telephone

#### NOTICE

Not for use or disclosure outside the  
Bell System except under written agreement

company and the telephone company retains ownership of the transmission and signaling components which are mounted to the lower housing and in the handset.

#### Ordering Guide (Refer to Table A)

### 2.02 Basic Telephone Set Ordering Information:

Example: Set, Telephone, 900B3-58† is a white desk set equipped with a rotary dial and an etched metal applique (Fig. 1).

†Refer to Table A for available color and applique information.

**2.03** These telephone sets are intended to be used as single line or two-party common battery desk sets and cannot be used on four- and eight-party service.

### 2.04 Optional Component (order separately):

- 819041708 (P-90D170) Guard Assembly (polarity guard).

## 3. INSTALLATION AND CONNECTIONS

**3.01** These telephone sets are furnished from the factory fully assembled and wired for bridged ringing. The P1A ringer is shipped from the factory with the bias spring in the low bias position. To connect the telephone set, plug the mounting cord into a 625-type connecting block or

if the existing jack is a 548A or equivalent, use the P1A converter, ordered separately.

**3.02** The internal connections for the 900A, B, 2900A, and B telephone sets, for nonkey system use, are shown in Fig. 5, 7, 8, and 10, respectively.

**3.03** Connections for 1A KTS require no telephone set modifications and are wired same as Fig. 5, 7, 8, and 10.

**3.04** Connections for use with 1A1 or 1A2 KTS are shown in Table F and Fig. 6 for 900A, Fig. 7 for 900B, Fig. 9 for 2900A, and Fig. 10 for 2900B telephone sets.

**3.05** To gain access to the interior of these sets for wiring changes, refer to Part 4.

**3.06** Refer to Table G for connections when installing polarity guard in the 2900A and 2900B telephone sets when instructed by local administrative practices or procedures.

**3.07** If required mount 819041708 (P-90D170) guard assembly to the two bosses located in front of dial on the lower housing.

### 3.08 Line and Ringer Connections:

- (1) Refer to Tables B (900A), C (900B), D (2900A), and E (2900B) for single line and two-party service for these telephone sets.

◆ TABLE A ◆

ORDERING GUIDE

TEL SET CODE	PLASTIC COLOR	APPLIQUE	TRIM COLOR	DIAL INSERT COLOR	DIAL	HANDSET CORD	MTG CORD
900B2-104	Dark Brown	Alligator	Chrome	Chrome	RTY	H4DU-104	D4BU-29
2900B2-104					TT		
900B3-58	White	Etched Metal			RTY	H4DU-58	
2900B3-58					TT		
900B5-58		Customer Option			RTY		
2900B5-58					TT		

- (2) For adjustments and ringer cutoff feature of the P1A ringer, refer to Section 501-259-101.

#### **4. REMOVAL OF TELEPHONE COMPANY-OWNED COMPONENTS**

**4.01** When it is desired to discontinue telephone service of these DESIGN LINE telephone sets, proceed as follows.

- (1) Remove handset and mounting cords from the telephone set.
- (2) Remove upper housing by loosening (4) screws in bottom of lower housing.

- (3) Remove the telephone company-owned components that can be easily removed.

- (4) Reassemble upper housing to lower housing.

**4.02** Follow local procedures for returning company-owned components.

**4.03** When it is desired to return a set to Western Electric for repair, it should be packed using the D-180600 Kit of Parts which contains packing materials and instructions.

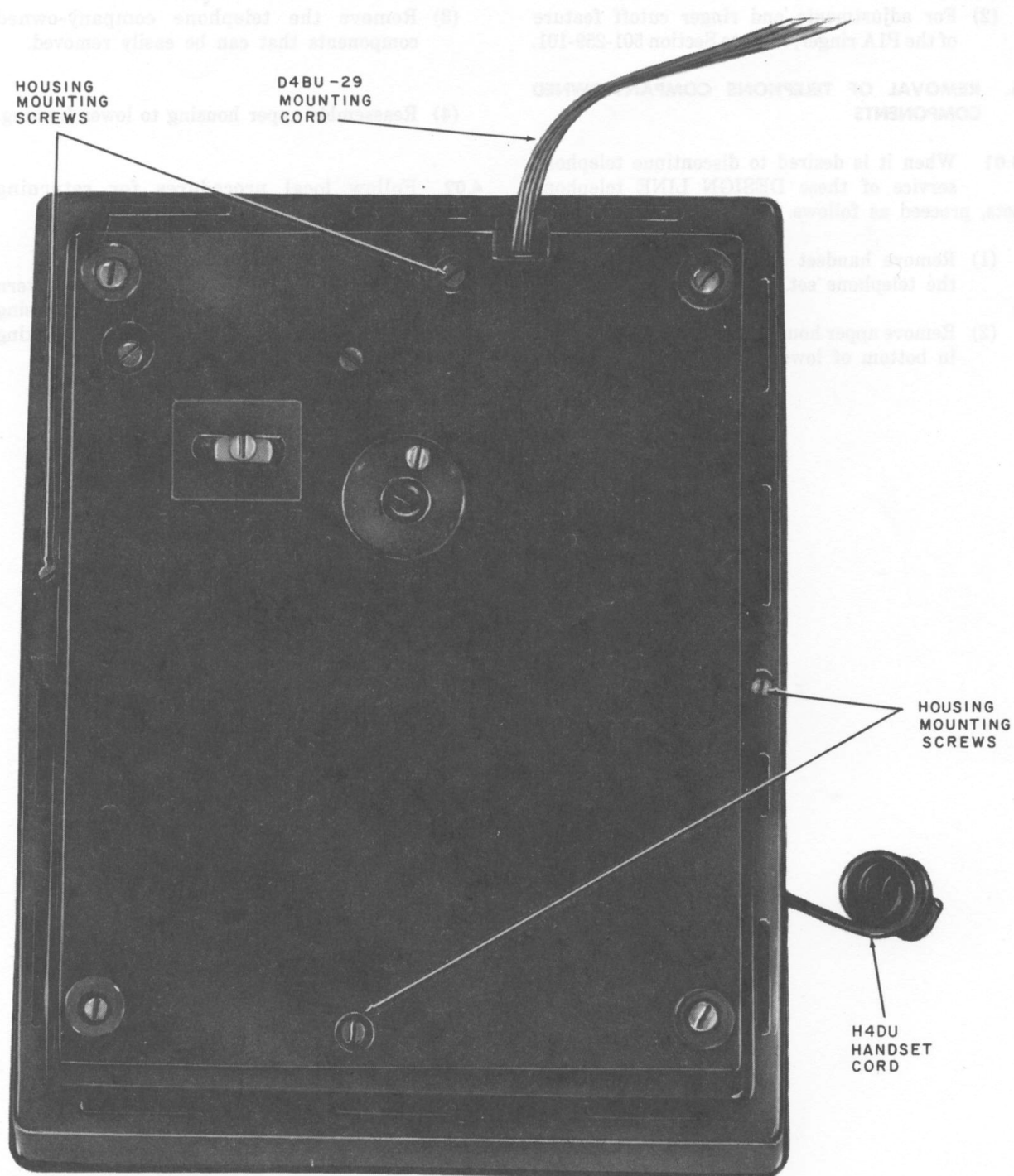


Fig. 3—900B or 2900B Telephone Set, Bottom View

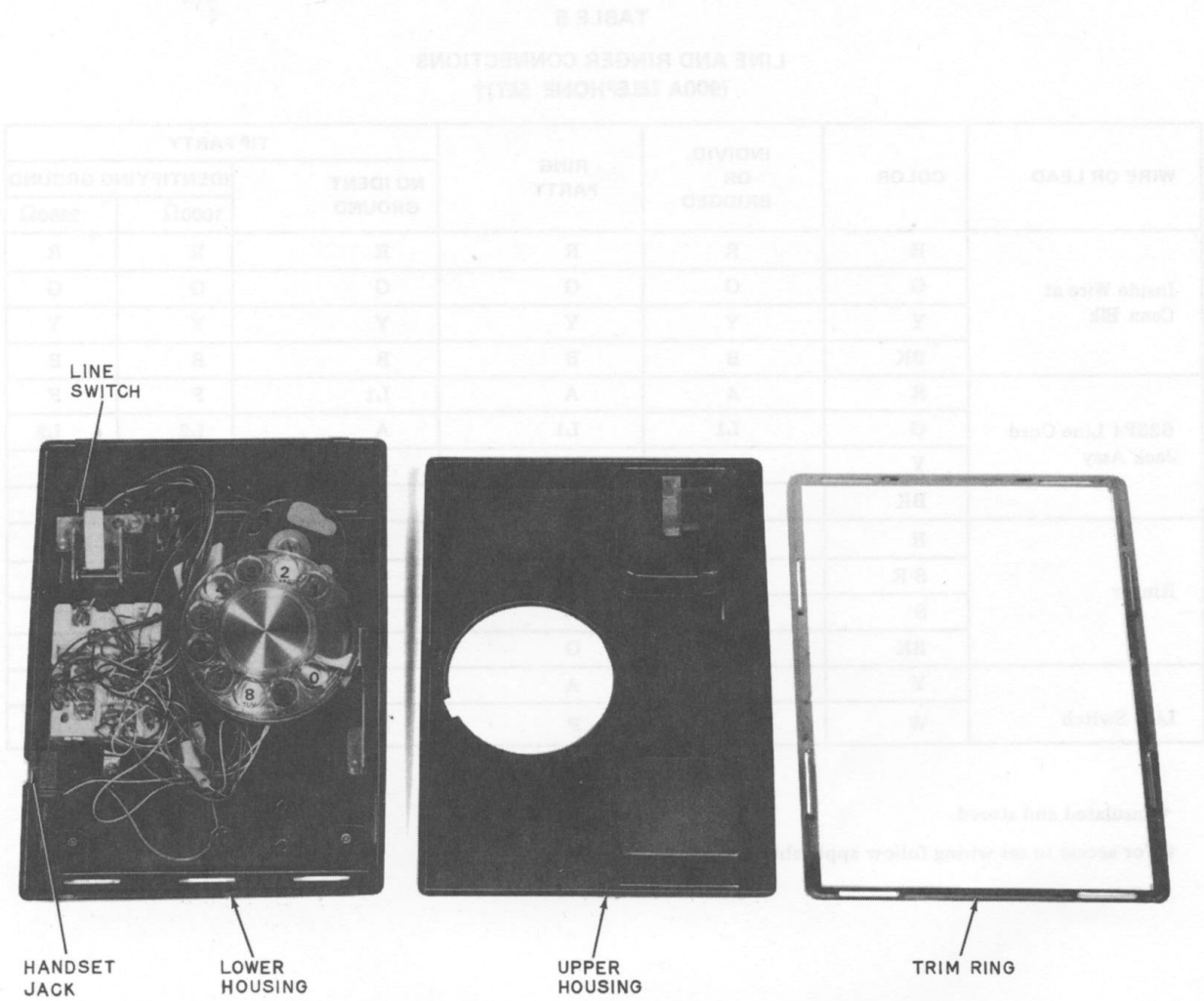


Fig. 4—900B Telephone Set With Upper Housing and Trim Ring Removed

**TABLE B**  
**LINE AND RINGER CONNECTIONS**  
**(900A TELEPHONE SET)†**

WIRE OR LEAD	COLOR	INDIVID. OR BRIDGED	RING PARTY	TIP PARTY		
				NO IDENT GROUND	IDENTIFYING GROUND	
					1000Ω	2650Ω
Inside Wire at Conn Blk	R	R	R	R	R	R
	G	G	G	G	G	G
	Y	Y	Y	Y	Y	Y
	BK	B	B	B	B	B
623P4 Line Cord Jack Assy	R	A	A	L1	F	F
	G	L1	L1	A	L2	L2
	Y	G	G	G	G	G
	BK	L2	L2	L2	*	*
Ringer	R	K	K	K	K	K
	S-R	*	*	*	*	L1
	S	*	*	*	L1	*
	BK	L1	G	G	G	G
Line Switch	Y	A	A	A	L2	L2
	W	F	F	F	B	B

\* Insulated and stored.

† For access to set wiring follow applicable steps in Part 4.

**TABLE C**  
**LINE AND RINGER CONNECTIONS**  
**(900B TELEPHONE SET)†**

WIRE OR LEAD	COLOR	INDIVID. OR BRIDGED	RING PARTY	TIP PARTY		
				NO IDENT GROUND	IDENT GROUND	
					1000 $\Omega$	2650 $\Omega$
Inside Wire at Conn Blk	R	R	R	R	R	R
	G	G	G	G	G	G
	Y	Y	Y	Y	Y	Y
	BK	B	B	B	B	B
623P4 Line Cord Jack Assy	R	A	A	L1	F	F
	G	L1	L1	A	L2	L2
	Y	G	G	G	G	G
	BK	L2	L2	L2	*	*
Ringer	R	K	K	K	K	K
	S-R	*	*	*	*	L1
	S	*	*	*	L1	*
	BK	L1	G	G	G	G
Line Switch	W	F	F	F	B	B
	BL	C	C	C	*	*
	BL-W	A	A	A	*	*
	BR	L2	L2	L2	C	C
	S	L2	L2	L2	A	A

\*Insulated and stored.

†For access to set wiring follow applicable steps in Part 4.

**TABLE D**  
**LINE AND RINGER CONNECTIONS**  
**(2900A TELEPHONE SET)†**

WIRE OR LEAD	COLOR	INDIVID. OR BRIDGED	RING PARTY	TIP PARTY		
				NO IDENT GROUND	IDENTIFYING GROUND	
					1000 $\Omega$	2650 $\Omega$
Inside Wire at Conn Blk	R	R	R	R	R	R
	G	G	G	G	G	G
	Y	Y	Y	Y	Y	Y
	BK	B	B	B	B	B
623P4 Line Cord Jack Assy	R	A	A	L1	C	C
	G	L1	L1	A	L2	L2
	Y	G	G	G	G	G
	BK	L2	L2	L2	*	*
Ringer	R	K	K	K	K	K
	S-R	*	*	*	*	L1
	S	*	*	*	L1	*
	BK	L1	G	G	G	G
Line Switch	Y	A	A	A	L2	L2
	W	F	F	C	B	B
	BR	C	C	F	F	F

\* Insulated and stored.

† For access to set wiring follow applicable steps in Part 4.



TABLE E

**LINE AND RINGER CONNECTIONS  
(2900B TELEPHONE SET)†**

WIRE OR LEAD	COLOR	INDIVID. OR BRIDGED	RING PARTY	TIP PARTY		
				NO IDENT GROUND	IDENT GROUND	
					1000 $\Omega$	2650 $\Omega$
Inside Wire at Conn Blk	R	R	R	R	R	R
	G	G	G	G	G	G
	Y	Y	Y	Y	Y	Y
	BK	B	B	B	B	B
623P4 Line Cord Jack Assy	R	A	A	L1	C	C
	G	L1	L1	A	L2	L2
	Y	G	G	G	G	G
	BK	L2	L2	L2	*	*
Ringer	R	K	K	K	K	K
	S-R	*	*	*	*	L1
	S	*	*	*	L1	*
	BK	L1	G	G	G	G
Line Switch	W	F	F	F	B	B
	G	L1	L1	A	L1	L1
	BL	C	C	C	*	*
	BL-W	A	A	L1	*	*
	BR	L2	L2	L2	F	F
	S	L2	L2	L2	A	A

\*Insulated and stored.

†For access to set wiring follow applicable steps in Part 4.

**TABLE F**  
**MODIFICATION FOR 1A1 OR 1A2 KTS [900A OR**  
**2900A TELEPHONE SET (NOTE)]\***

LEAD	COLOR	NETWORK TERMINAL	
		REMOVE FROM	CONNECT TO
Line Switch	S	A	L2
	Y	A	L2
	BR	C	G
	G	L1	A
	W	F	C
623P4 Line Cord Jack Assy	G	L1	F
Ringer	BK	L1	F

\* For access to telephone set wiring follow applicable steps in Part 4.

**Note:** For 900B or 2900B telephone set, the only modification needed is to move (BR) line switch lead from network terminal L2 and connect to terminal G. See Fig. 7 and 10.

**TABLE G**  
**POLARITY GUARD CONNECTIONS FOR 2900A AND B TELEPHONE SET 819041708**  
**(P-90D170) GUARD ASSEMBLY\***

LEAD	COLOR	DISCONNECT FROM	CONNECT TO	
		NET.	NET.	POLARITY GUARD
Dial	BK	RR		T
Line Switch	BR or BL†	C		S
	W‡			
623P4 Line Cord Jack Assy.	R§			
Polarity Guard	G		RR	
	W		C	

\*For access to set wiring, follow applicable steps in Part 4.

†If wired for bridged service or ring party, (BR) lead on 2900A and (BL) lead on 2900B.

‡If wired for tip party and no identification ground, 1A1 or 1A2 KTS (2900A only).

§If wired for tip party with identification ground.



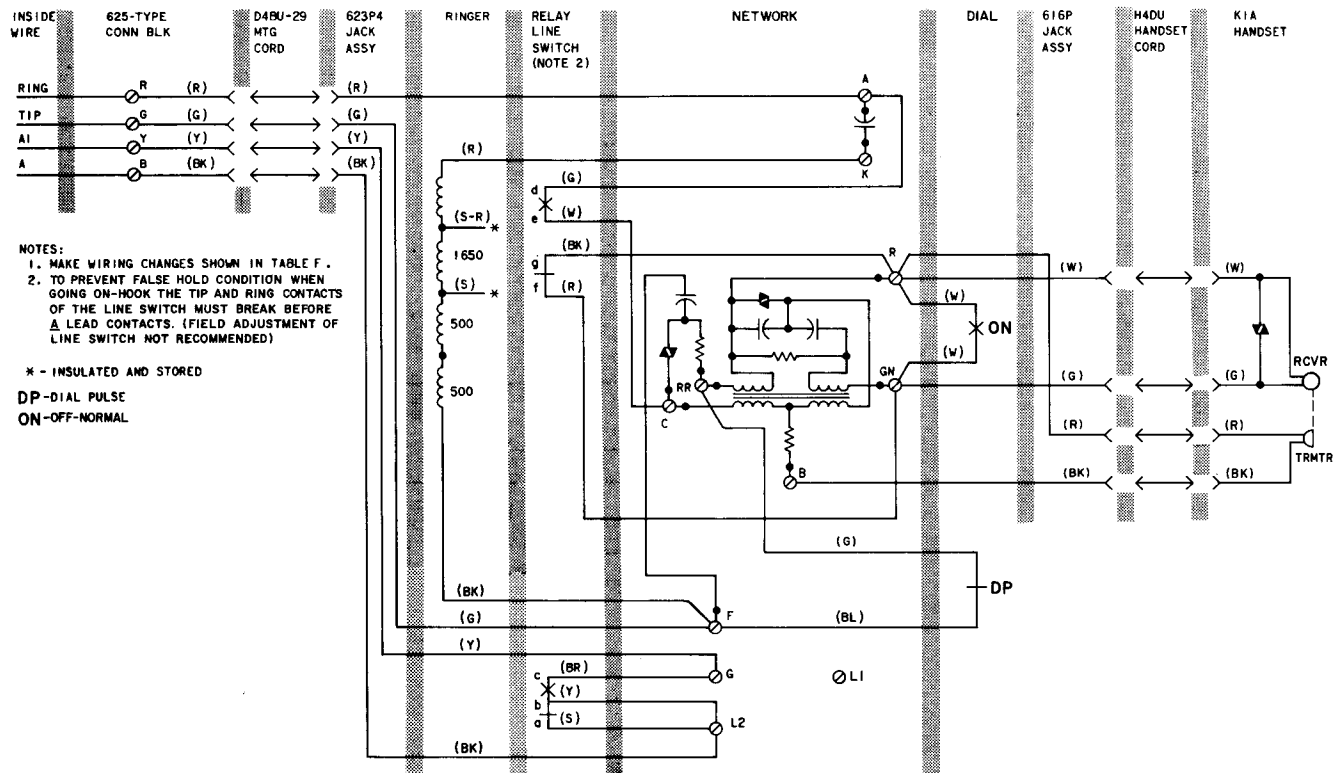


Fig. 6—900A Telephone Set Wired for 1A1 for 1A2 KTS (Note 1)†

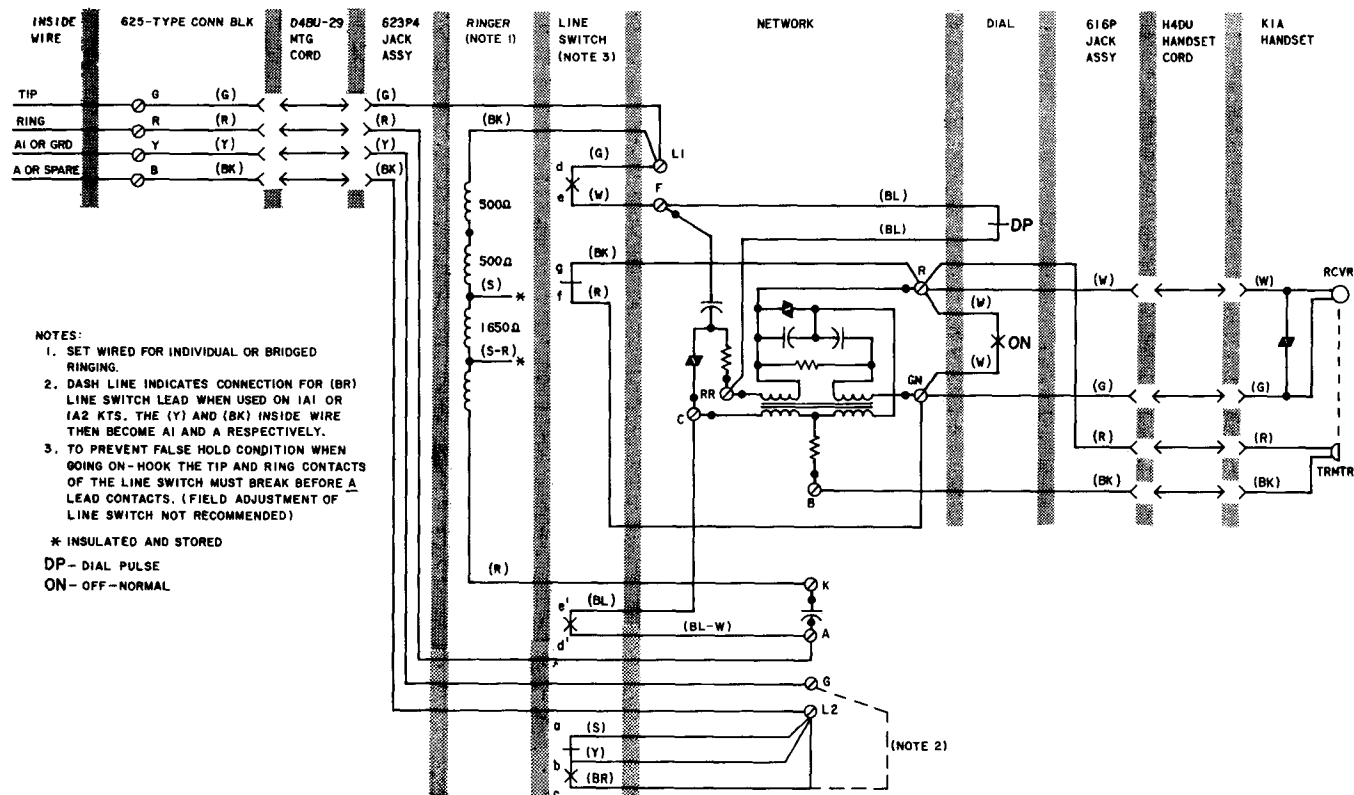


Fig. 7—9900B Telephone Set, Connections for Key or Nonkey



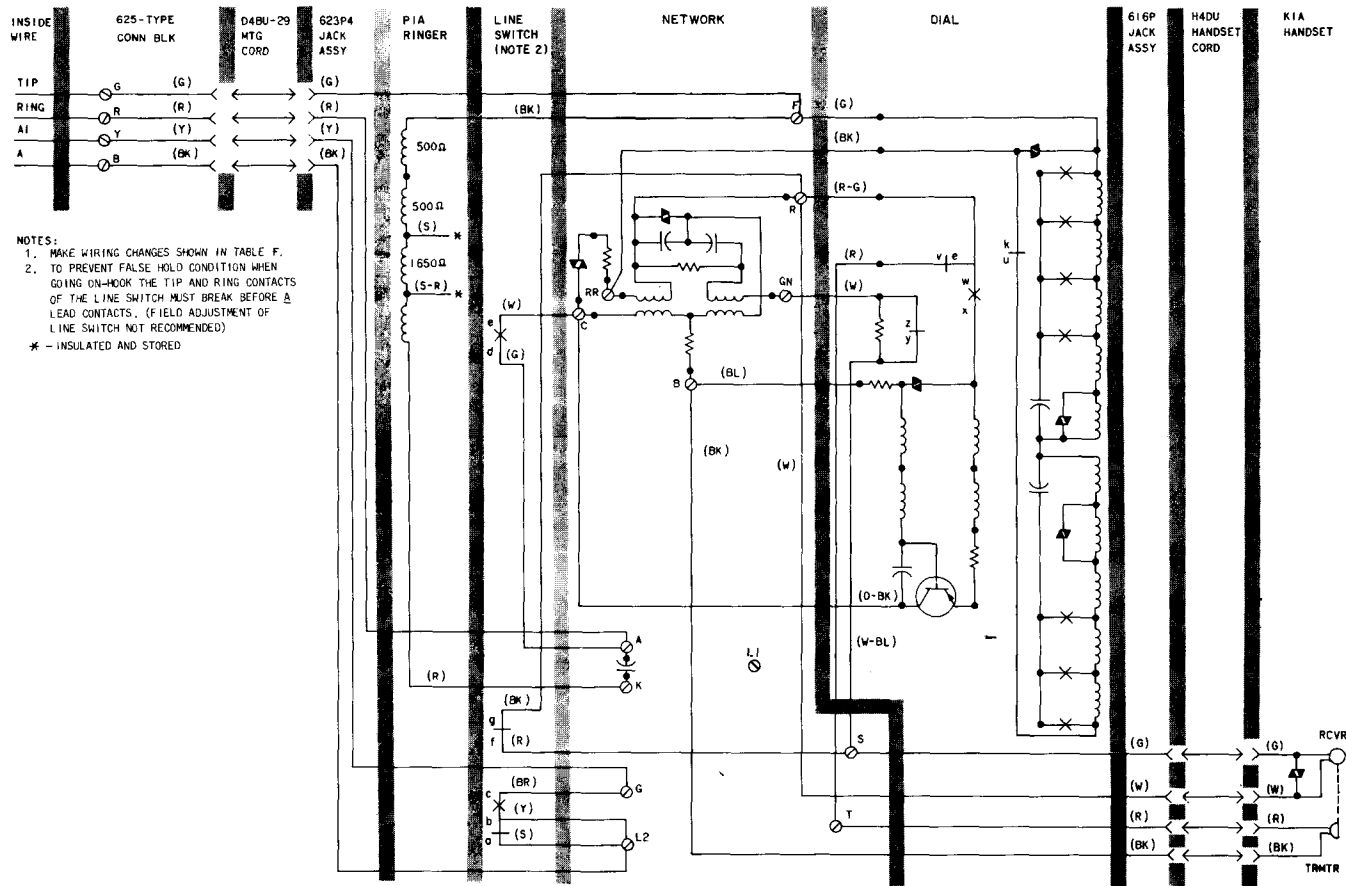


Fig. 9—2900A Telephone Set Wired for 1A1 or 1A2 KTS (Note 1)†

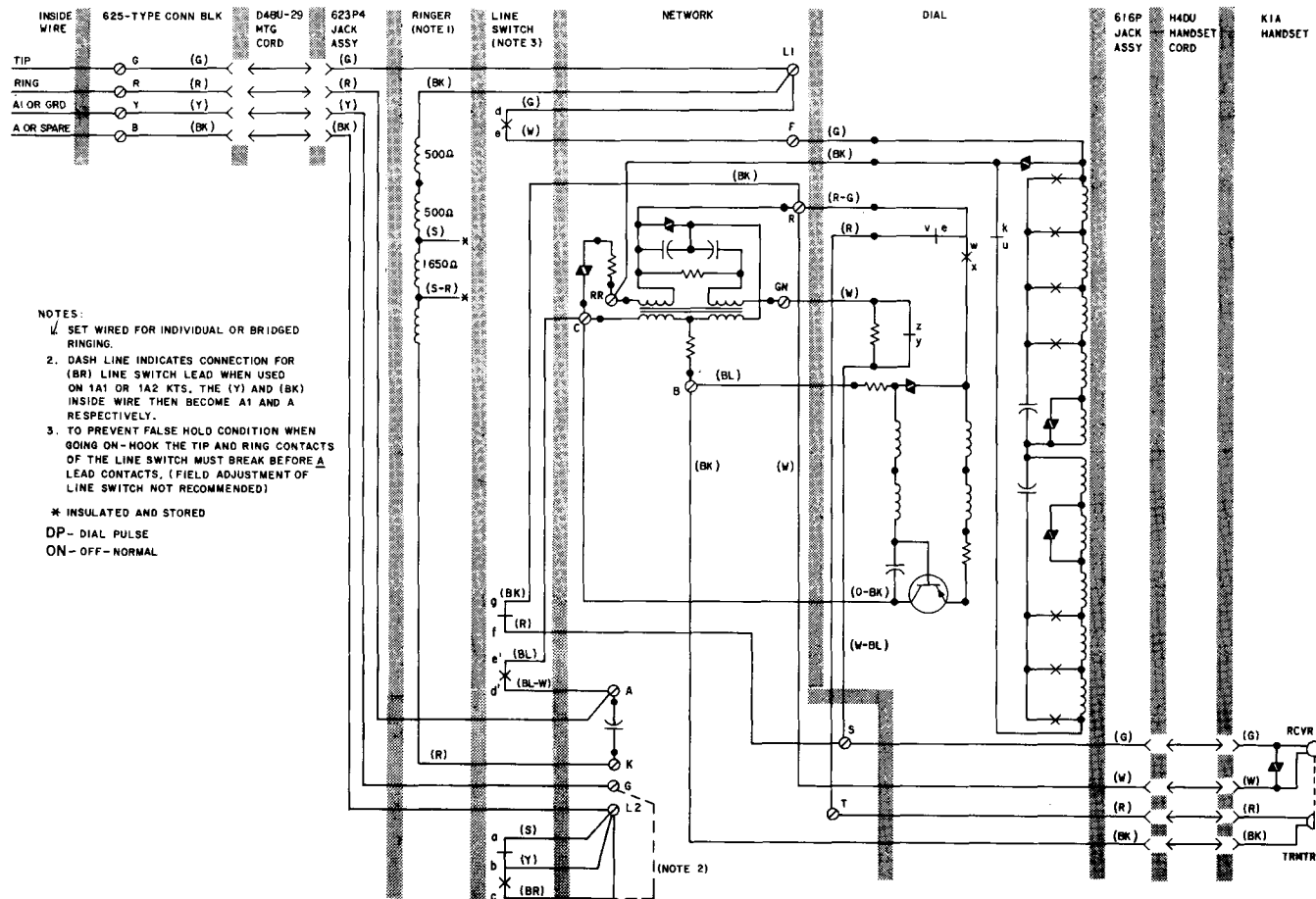


Fig. 10—2900B Telephone Set, Connections for Key or Nonkey