

**SERVICE**  
**COIN COLLECTORS, SUBSCRIBER SET REQUIRED**

**170 SERIES**

**1. GENERAL**

**1.01** This section provides connection information for the 170-type coin collectors and associated subscriber sets.

**1.02** Information in this section was formerly contained in Sections 506-319-402, 506-319-403, 506-319-404, 506-319-405, and 506-430-401 which are hereby canceled.

**1.03** Refer to the 506 Division, section entitled: Reference, Coin Collectors, Subscriber Set Required for additional information on these sets.

**2. CONNECTION INDEX**

Fig. 1—174C, D, G, H; and 174CS, GS, CT, GT Coin Collectors with 634A, BA, BC; or 684A, BA, BC Subscriber Sets—Coin First, Connections

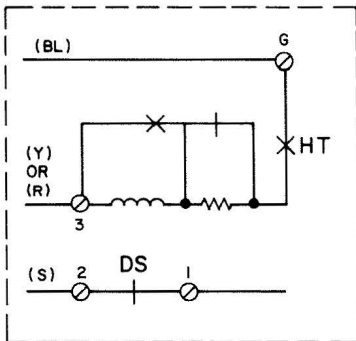
Fig. 2—174C, D, G, H; and 174CS, GS, CT, GT Coin Collectors with 634CG, CH, CK, CL; or 684CK, CL Subscriber Sets—Coin First, Connections

Fig. 3—176C, D, G, H; and 176CS, GS, CT, GT Coin Collectors with 634A, BA, BC, or 684A, BA, BC Subscriber Sets—Coin First, Connections

Fig. 4—176C, D, G, H; and 176CS, GS, CT, GT Coin Collectors with 634CG, CH, CK, CL; or 684CK, CL Subscriber Sets—Coin First, Connections.

Fig. 5—177G and H Coin Collectors with 634A, BA or 684A, BA Subscriber Sets—Postpay, Connections

Fig. 6—178G and H Coin Collectors with 634A, BA or 684A, BA Subscriber Sets—Postpay, Connections



( NOTE 3 )

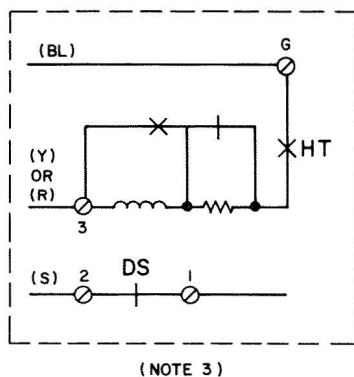
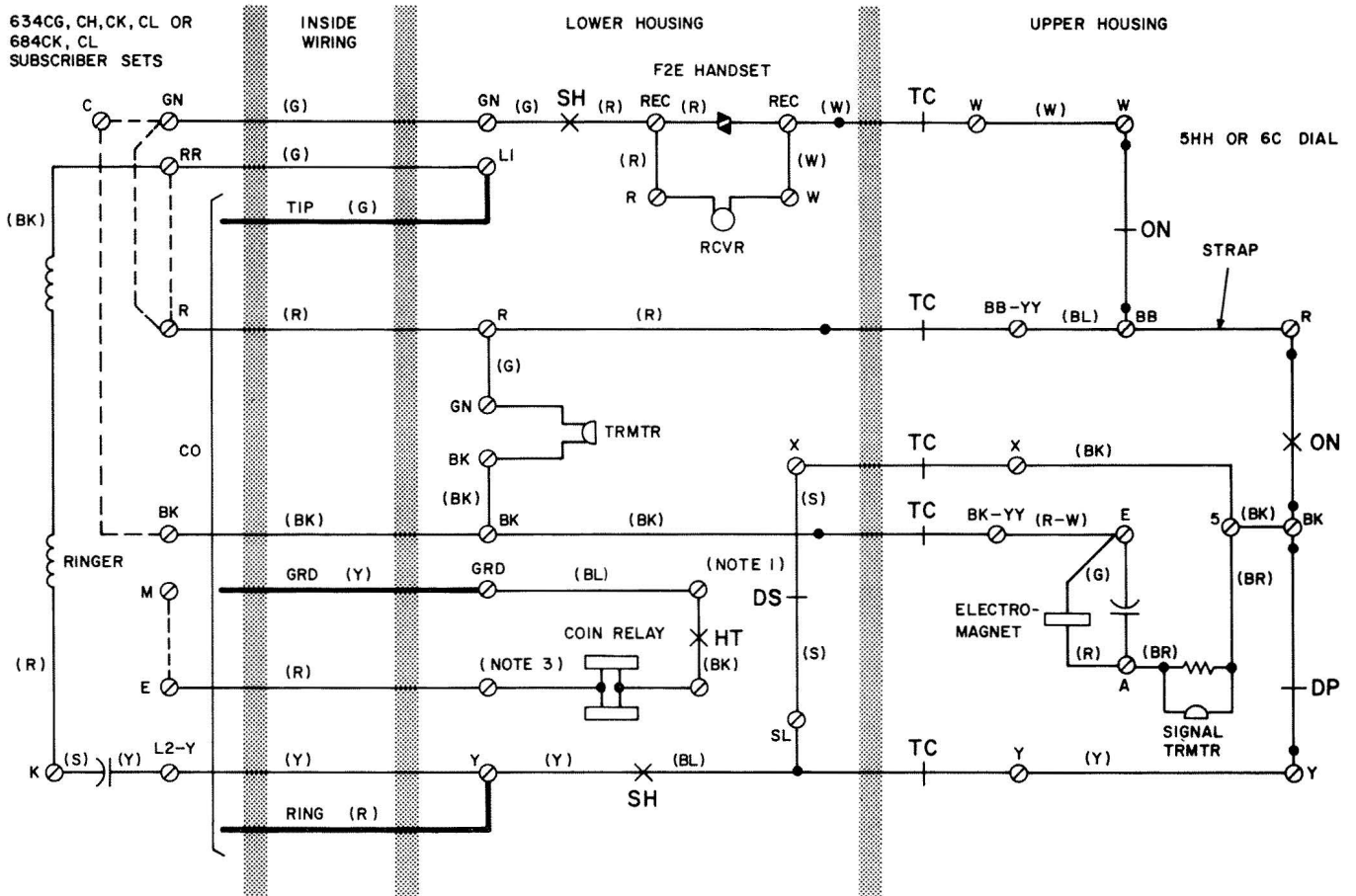
1. 174C,D,G, AND H COIN COLLECTORS ARE NOT WIRED WITH DIAL SHORTING CONTACT OR ASSOCIATED LEADS AND TERMINALS.
2. WHEN A 6IR FILTER IS REQUIRED FOR RADIO FREQUENCY SUPPRESSION MOVE (Y) DIAL LEAD FROM Y UPPER HOUSING CONTACT SPRING TO FILTER BRACKET TERM., CONNECT (Y) FILTER LEAD TO FILTER BRACKET TERM., CONNECT (BK) FILTER LEAD TO TERM. NO.5 ON CHUTE, AND CONNECT (R) FILTER LEAD TO Y UPPER HOUSING CONTACT.
3. THE 174CT, GT COIN COLLECTORS ARE EQUIPPED WITH P-10E786 COIN RELAYS WIRED AS SHOWN.

† PROVIDED WITH 634BC AND 684BC SUBSET ONLY

§ RR TERMINAL ON 634BC AND 684BC SUBSETS

DP - DIAL PULSE CONTACTS  
HT - HOPPER TRIGGER CONTACTS  
SH - SWITCH HOOK CONTACTS  
ON - OFF NORMAL CONTACTS  
TC - TRANSFER CONTACTS  
DS - DIAL SHORTING CONTACTS

Page 2

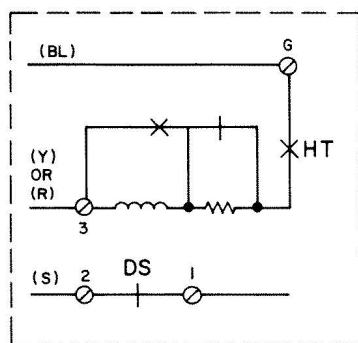
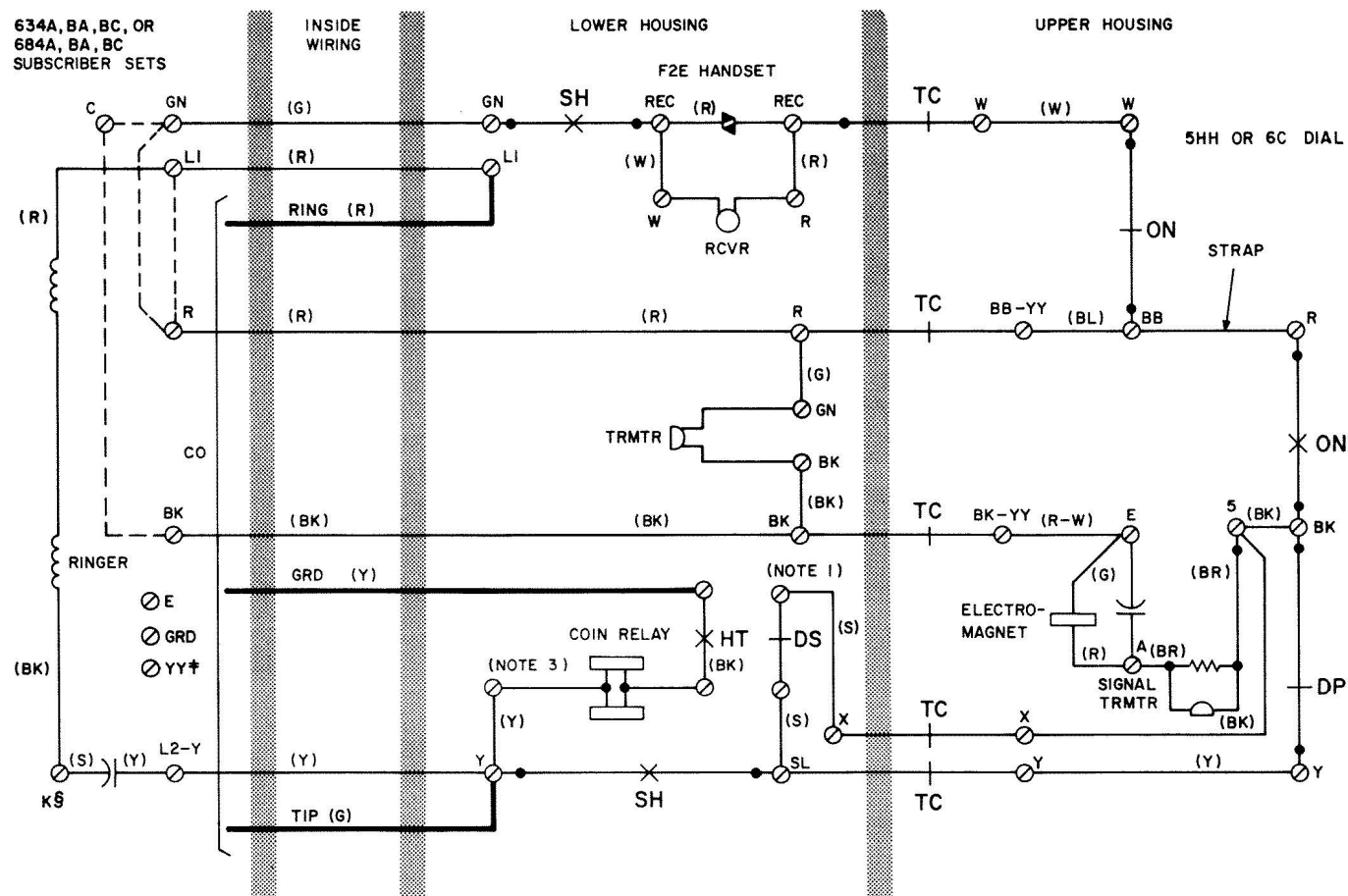


NOTES:

1. 174C,D,G, AND H COIN COLLECTORS ARE NOT WIRED WITH DIAL SHORTING CONTACT OR ASSOCIATED LEADS AND TERMINALS.
2. WHEN A 6IR FILTER IS REQUIRED FOR RADIO FREQUENCY SUPPRESSION MOVE (Y) DIAL LEAD FROM Y UPPER HOUSING CONTACT SPRING TO FILTER BRACKET TERM.,CONNECT (Y) FILTER LEAD TO FILTER BRACKET TERM.,CONNECT (BK) FILTER LEAD TO TERM. NO.5 ON CHUTE, AND CONNECT (R) FILTER LEAD TO Y UPPER HOUSING CONTACT.
3. THE 174CT, 6T COIN COLLECTORS ARE EQUIPPED WITH P-10E786 COIN RELAYS WIRED AS SHOWN.

DP - DIAL PULSE CONTACTS  
HT - HOPPER TRIGGER CONTACTS  
SH - SWITCH HOOK CONTACTS  
ON - OFF NORMAL CONTACTS  
TC - TRANSFER CONTACTS  
DS - DIAL SHORTING CONTACTS

**Fig. 2—174C, D, G, H; and 174CS, GS, CT, GT Coin Collectors with 634CG, CH, CK, CL; or 684CK, CL Subscriber Sets—Coin First, Connections**



(NOTE 3)

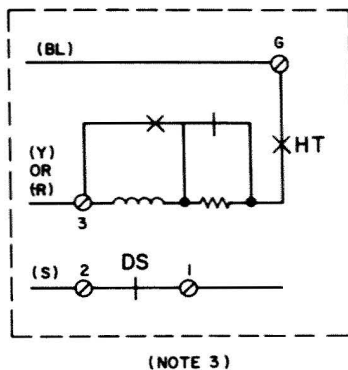
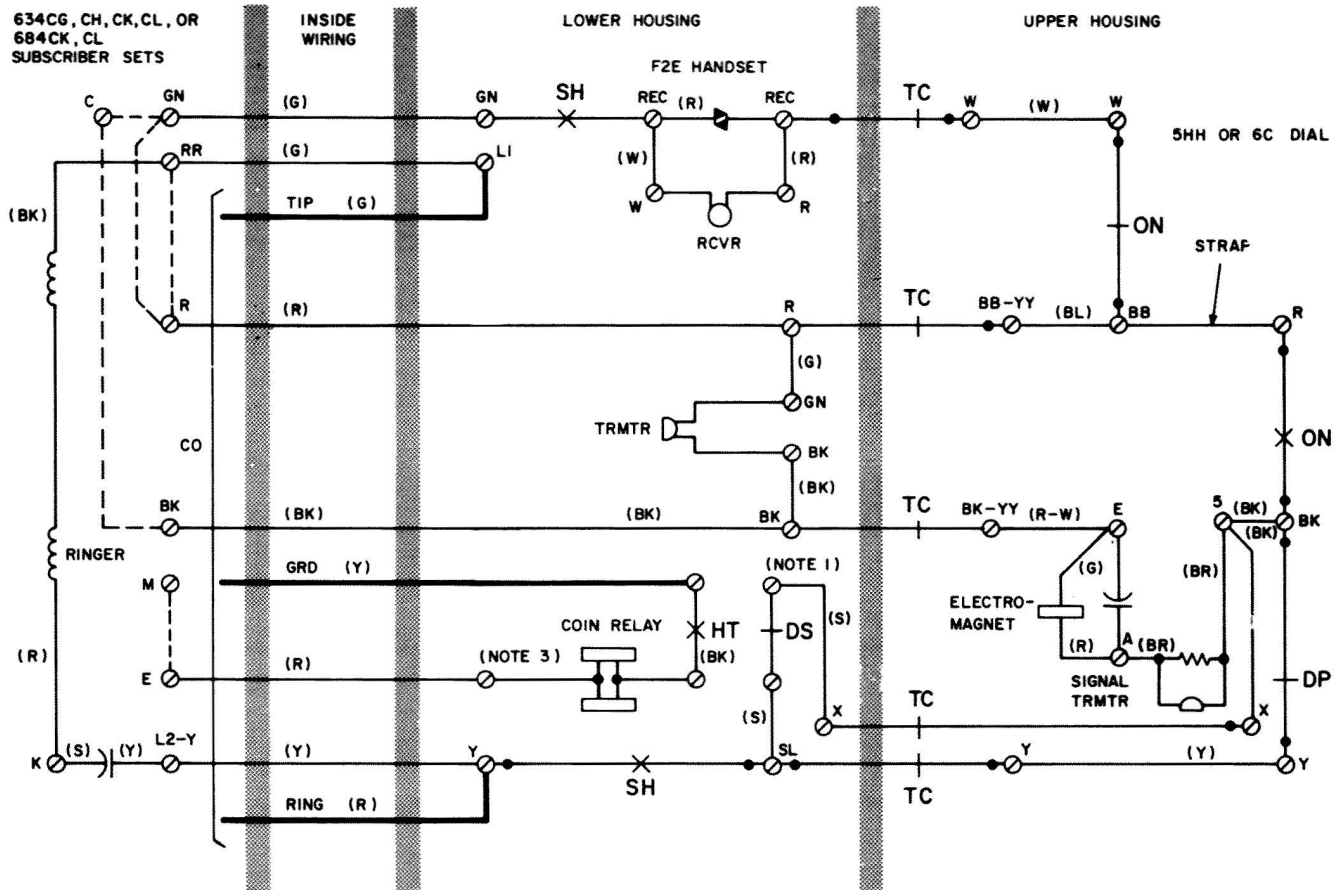
## NOTES:

1. 176C,D,G, AND H COIN COLLECTORS ARE NOT WIRED WITH DIAL SHORTING CONTACT OR ASSOCIATED LEADS AND TERMINALS.
  2. WHEN A 61R FILTER IS REQUIRED FOR RADIO FREQUENCY SUPPRESSION MOVE (Y) DIAL LEAD FROM Y UPPER HOUSING CONTACT SPRING TO FILTER BRACKET TERM.,CONNECT (Y) FILTER LEAD TO FILTER BRACKET TERM.,CONNECT (BK) FILTER LEAD TO TERM. NO.5 ON CHUTE, AND CONNECT (R) FILTER LEAD TO Y UPPER HOUSING CONTACT.
  3. THE 176CT,GT COIN COLLECTORS ARE EQUIPPED WITH P-10E786 COIN RELAYS WIRED AS SHOWN.
- † PROVIDED WITH 634BC AND 684BC SUBSETS ONLY
- § RR TERM. ON 634BC AND 684BC SUBSETS

DP - DIAL PULSE CONTACTS  
HT - HOPPER TRIGGER CONTACTS  
SH - SWITCH HOOK CONTACTS  
ON - OFF NORMAL CONTACTS  
TC - TRANSFER CONTACTS  
DS - DIAL SHORTING CONTACTS

**Fig. 3—176C, D, G, H; and 176CS, GS, CT, GT Coin Collectors with 634A, BA, BC; or 684A, BA, BC Subscriber Sets—Coin First, Connections**





- NOTES:**

1. 176C,D,G, AND H COIN COLLECTORS ARE NOT WIRED WITH DIAL SHORTING CONTACT OR ASSOCIATED LEADS AND TERMINALS.
2. WHEN A 6IR FILTER IS REQUIRED FOR RADIO FREQUENCY SUPPRESSION MOVE (Y) DIAL LEAD FROM Y UPPER HOUSING CONTACT SPRING TO FILTER BRACKET TERM.,CONNECT (Y) FILTER LEAD TO FILTER BRACKET TERM.,CONNECT (BK) FILTER LEAD TO TERM. NO. 5 ON CHUTE, AND CONNECT (R) FILTER LEAD TO Y UPPER HOUSING CONTACT.
3. THE 176CT,GT COIN COLLECTORS ARE EQUIPPED WITH P-10E786 COIN RELAYS WIRED AS SHOWN.

DP - DIAL PULSE CONTACTS

HT - HOPPER TRIGGER CONTACTS

SH - SWITCH HOOK CONTACTS

ON - OFF NORMAL CONTACTS

TC - TRANSFER CONTACTS

DS - DIAL SHORTING CONTACTS

**Fig. 4—176C, D, G, H; and 176CS, GS, CT, GT Coin Collectors with 634CG, CH, CK, CL; or 684CK, CL Subscriber Sets—Coin First, Connections**

