

## BOOTHS — INDOOR

### 5, 6, 10, AND 11 TYPES

### INSTALLATION

#### 1.00 INTRODUCTION

**1.01** This section provides information for the installation of 5, 6, 10, and 11-type telephone booths. It also includes information on the No. 2 roto-lock.

**1.02** Installation of light fixtures, ventilator, and blower are covered in section entitled Booths, Indoor — 5, 6, 10, and 11 Types — Installation of Light Fixtures, Ventilator, and Blower.

**1.03** For information regarding the 19- and 20-type shelves, refer to section entitled Shelves, Indoor — Installation.

listed below, consult your supervisor before starting the installation.

- The distance between the front of the booth and any wall or fixture must be 24 inches for access to the booth. When the booth faces the public side of a sales counter or fixture, the distance shall be increased to 36 inches.
- The approach to each booth must be free of hazards such as stairways leading down, trap doors, or flooring in an unsafe condition.
- To prevent damage from excessive heat or water, locate booths away from radiators, steam pipes, hot-air registers, flushing traps, or sinks.
- Booths shall not block access to wall fuse boxes or switches.
- Where practicable, booths shall be installed in well-lighted locations. In darker locations, electric lighting shall be provided for all booths.
- Provide sufficient space over the top of the booth to permit access for maintenance of the booth lighting equipment. If this is not practicable, arrange with the public telephone agent or customer to provide a removable panel or similar facility.
- To avoid inductive effects, obtain as great a separation as possible (minimum 6 inches) between the booth with its associated wiring and neon signs, neon wiring, all transformers, and similar high-voltage devices.
- The booths described herein shall not be exposed to the elements.

#### 2.00 LOCATING

##### Dimensions

**2.01** The measurements of 5, 6, 10, or 11-type telephone booth equipped with end panels are:

	Feet	Inches
Width	2	6-1/2
Depth*	2	6-1/2
Height	6	11-1/4

\* If equipped with 60- or 62-type back panels, add 9/16 inch.

##### Preliminary Survey

**2.02** If the location specified by the service order (or its attachment) conflicts with the customer's wishes or with any general requirements

**3.00 ASSEMBLING AND PLACING**

**3.01** Booths are shipped assembled unless the order states that they are to be shipped un-assembled (knocked down), in which case all screws and other material are included in the shipment.

- Screw holes are aligned to facilitate assembly in the field. When assembled, the sides of the booth unit shall make contact with the separators or panels along their entire length. Assemble booths in accordance with layout shown in Fig. 1.

**Booth Panels**

**3.02** When it is necessary to remove or attach end panels in the 5- or 6-type booths equipped with smooth gold-brown matted linings, remove the corner moldings to gain access to screw holes. The corner moldings are snapped on over clips. To remove, insert the end of the screwdriver behind the molding and turn until the molding snaps off. End panels of other type booths may be attached or removed without disturbing corner moldings.

**3.03** For booth backs that are:

- **Exposed**, install 60- or 62-type panels with the same finish.
- **Not exposed**, install a booth having a soft-wood back.

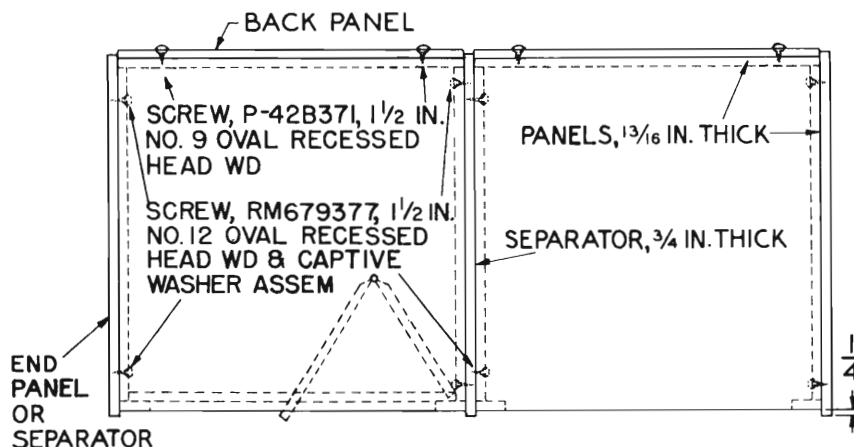
**3.04** When the side of the booth is not exposed or appearance is not important, a panel is not required; however, a booth separator should be installed.

**Leveling Booths**

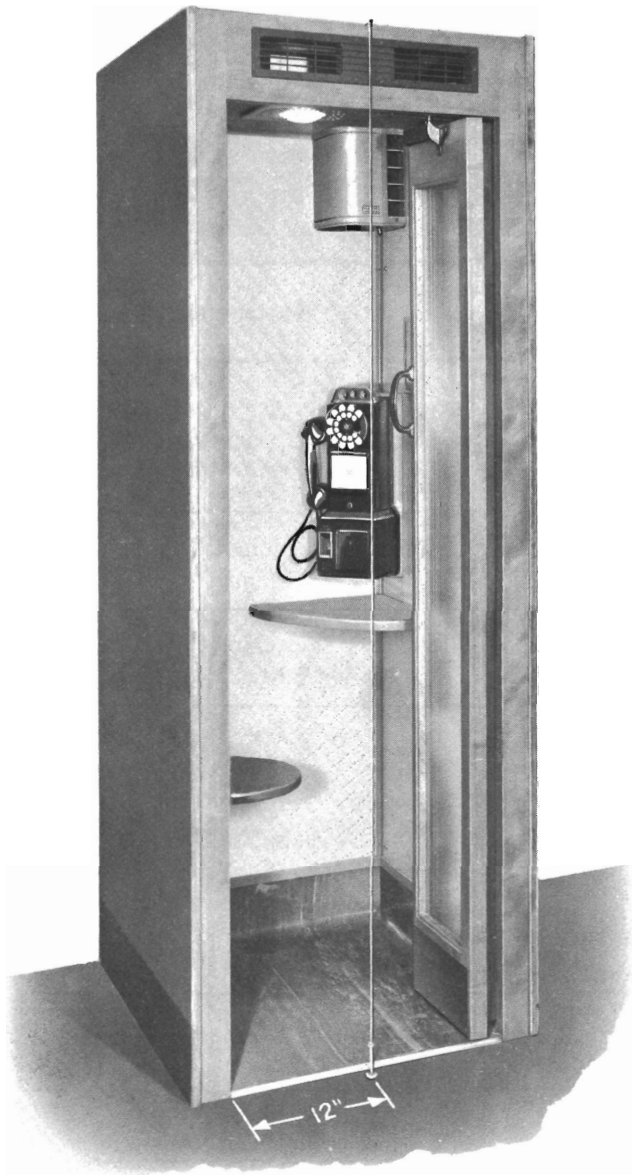
**3.05** Set each booth on the floor so that it is level and does not rock. Where the floor is not level or even, place wooden shims under the sides to level it. Be sure to place shims under the middle area of the floor to prevent sagging or flexing. The top of the door must be aligned with the booth door frame when the door is closed.

**3.06** The booth must be level so that the coin collector will function properly. Level as follows:

1. Place a dime (or mark the size of a dime) as shown in Fig. 2.
2. Suspend a plumb line (obtain locally), as shown in Fig. 2, from a tack temporarily located in the center of the top edge of the booth so that hangs about 1/2 inch from the floor.
3. Shim the booth, as covered in 3.05, until the plumb line is centered within the area of the dime or mark.



**Fig. 1 — Typical Layout**



**Fig. 2 — 11-type Booth with Plumb Line**

**3.07** Avoid setting booths on floors with considerable slope such as ramps or inclined passageways between rooms. When locations such as these cannot be avoided, be sure each booth is placed level with a minimum step-up-to enter. In multiple installations of this type:

- Attach separator to highest booth first.
- Line up the booths so their fronts and tops present a straight line before attempting to fasten them together.

- Any exposed gap of 1/4 inch or more between the floor and the booth shall be sealed with strips of wood, stained to match the finish of the booth.

#### **4.00 INSTALLATION OF TELEPHONE WIRING**

**4.01** In selecting the type wire or cable, refer to the section entitled Selection of Wire and Cable.

**4.02** Signaling grounds are given in the table.

Number of Booths	Options		
	Cable Pairs	Conductors of Station Wire	No. 14 Ground Wire
1 to 6	1	1	
6 to 12	2	2	1
12 or more	1 per 6 booths	1 per 6 booths	1

**4.03** Where triple wire is used, it shall be run to the connecting block of each booth. Booths are equipped with either a 3- or 4-type light fixture, and the connecting block for termination is mounted on a bracket attached to the side of the light fixture.

**4.04** For multiple-booth installations, inside wiring cable shall be terminated on a suitable connecting block installed in the ceiling of one of the booths or in the immediate vicinity.

- To gain access to this connecting block, open the lens in the light fixture from the inside of the booth. Use a screwdriver to open the 4-type fixture, and a 544A key to open the 3-type fixture.

**5.00 BOOTH PARTS AND FASTENERS**

Locations of booth parts and fasteners for each part are shown in Table A and Fig. 3.

**TABLE A**

<b>Booth Part or Fixture</b>	<b>Location in Booth</b>	<b>Fasteners</b>
Backboard, 167A	Right-rear corner, top of backboard 63 inches from floor without seat, and 52-1/2 inches with seat.	Six 1/4-inch — 20 x 1-5/8 inch hex-head cap screws and 1/4-inch — 20 tee nuts.
Blower, KS-14125	Ceiling of booth over coin collector.	Fittings furnished with equipment.
Booth Cutout Switch or Plug Fuse Cutout	Top of ceiling.	Two 1/2-inch No. 8 RH blued wood screws.
Card Frame, KS-14123 List 1—Frame Only List 2—Glass Window List 3—Plastic Window List 4—Frame with Glass Window List 5—Frame with Plastic Window	See Fig. 3.	Four 3/4-inch No. 8 FH bright wood screws.
Light Fixture, 2-type (directory)	Centered on end panel.	Two 5/8-inch No. 8 RH brass wood screws.
Roto-lock, No. 2	See Fig. 4.	Shown in Fig. 4.
Seat, 101T or U	Left-rear corner with top of seat 20 inches from floor.	Seven 1-1/4 inch No. 14 RH blued wood screws, four 1-1/4 inch 20 x 1-inch hex-head screws, and 1/4-inch — 20 tee nuts.
Shelf, 18A, C, or D	See Fig. 3.	Six 3/4-inch No. 8 RH blued wood screws.
Shelf, 18E	See Fig. 3.	Six 7/8-inch No. 8 Phillips-type OH wood screws, zinc-plated; and No. 8 countersunk washers, nickel-plated.
Ventilator, KS-8164	Ceiling of booth over coin collector.	Fittings furnished with equipment.

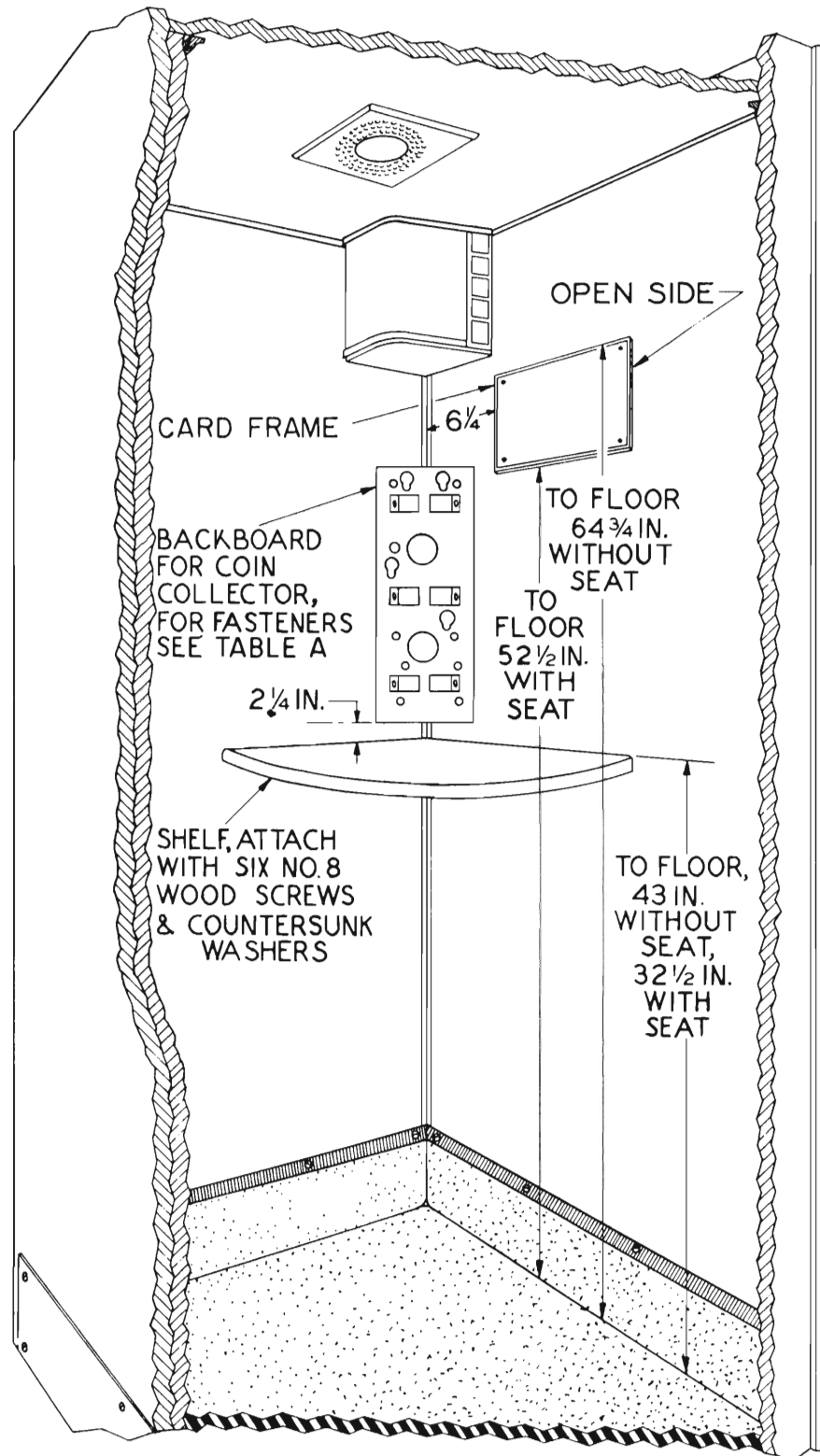


Fig. 3 — Locating Booth Accessories

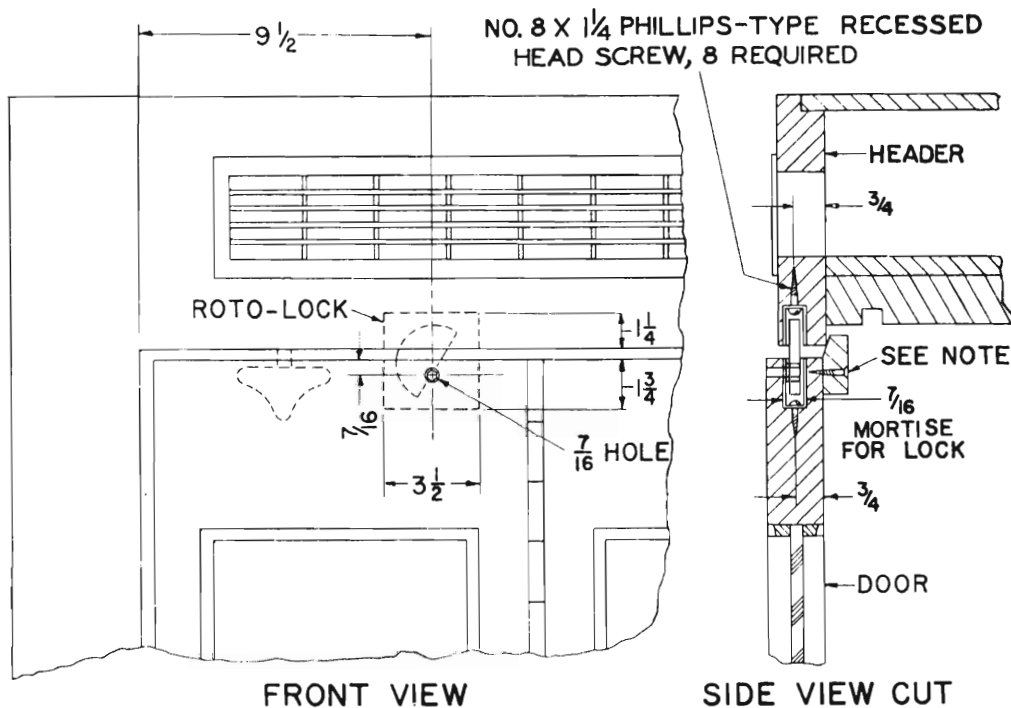
**6.00 INSTALLATION OF NO. 2 ROTO-LOCK**

**6.01** The No. 2 roto-lock, which is used to lock doors of indoor- and outdoor-type wooden booths at attended locations, is installed as illustrated in Fig. 4 and described in 6.02.

**6.02** Install the No. 2 roto-lock as follows:

1. Remove the guide pin and door stop to enable the booth door to swing out.

2. Drill and cut out mortise in booth header, observing dimensions in Fig. 4.
3. Mount male and female components flush with surface of door and header.
4. Viewed from the outside, the lock shall be assembled so as to engage when turned in a clockwise direction.
5. A 5/16-inch hexagonal Allen-type wrench is used to lock or open the No. 2 roto-lock through a 7/16-inch diameter opening in the outside of the door.



**Note:** Replace P-381074 (1-1/2 inch) door-stop screws with 1-inch wood screws (three required).

**Fig. 4 — Installing the No. 2 Roto-lock**