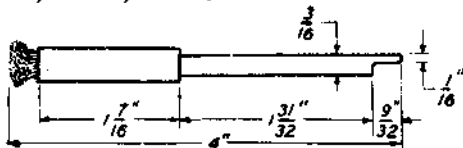
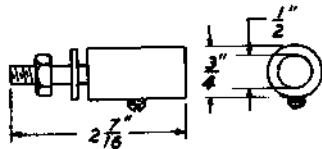


CODED TOOLS NO. 133 TO 209 DESCRIPTION

TOOL, 133 A&M Only. Order this tool for replacement purposes only.
Replaced by, but not interchangeable with:
Brush, Wire, KS-6916.

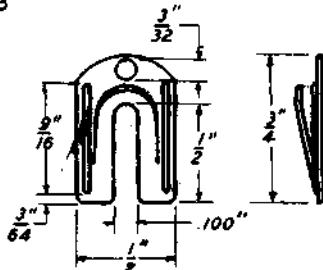


TOOL, 135 A&M Only. Order this tool for replacement purposes only



TOOL, 136 Manufacture Discontinued.
Replaced by the No. 136B tool.

→ TOOL, 136B

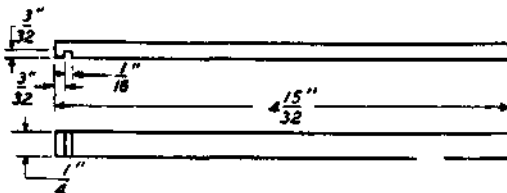


Relay blocking tool.

Replaces the No. 136 tool.

For use on certain flat type relays.

TOOL, 138

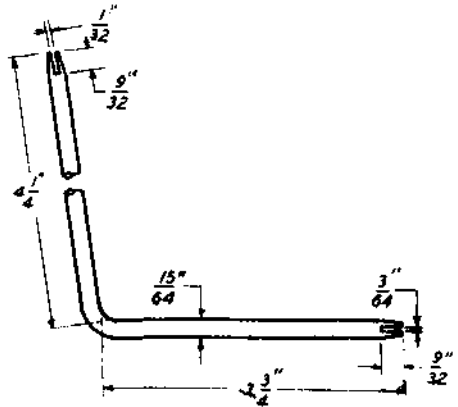


Adjuster.

For use on 5 type traffic registers and power driven rotary selectors.

TOOL, 142 Manufacture Discontinued.
Replaced by the No. 259 tool.

→ TOOL, 143



Spring adjuster.

For general use.

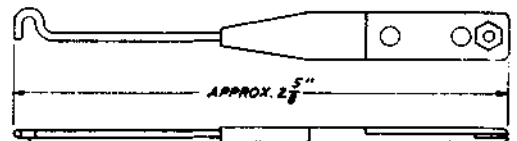
TOOL, 144



Combination screwdriver and wrench.

For use on 60 type selectors.

TOOL, 145

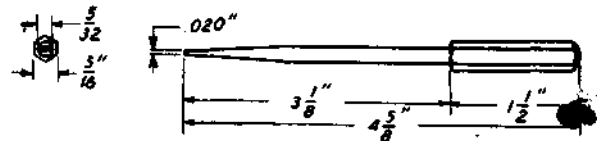


Adjusting Hook.

For use on 60 type selectors.

TOOL, 146 Manufacture Discontinued.
Replaced by the No. 319B tool.

→ TOOL, 147

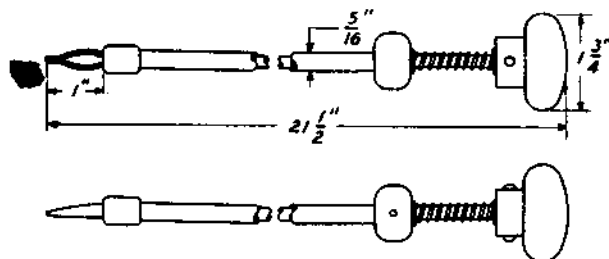


3-1/8" screwdriver.

Replacement part for the No. 72 tool.

For use on reciprocating bar type interrupters and connecting blocks.

TOOL, 149

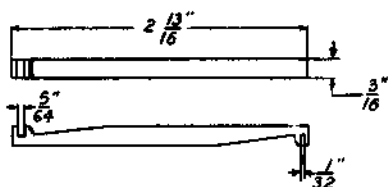


Spring tweezers.

Replaces the No. 77 tool.

For use in holding wires to jack terminals while soldering.

TOOL, 179



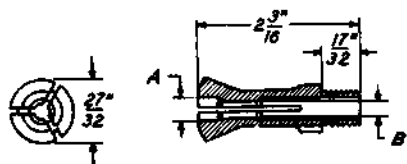
Spring adjuster.

For use on 197 and 198 type switches, 50 type dial testers and power driven rotary selectors.

TOOL, 200 Manufacture Discontinued.
Replaced by the No. 316 tool.

TOOL, 201 A&M Only. (For 109 type plugs).

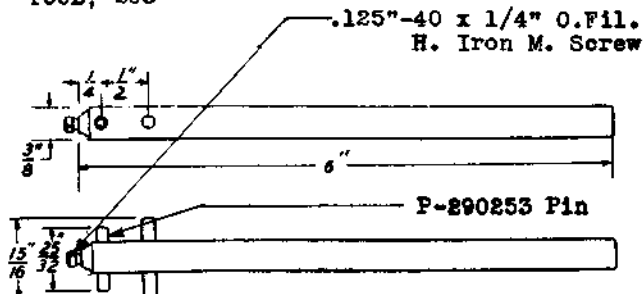
TOOL, 202 A&M Only. (For 110 type plugs).



| Tool | Dim. "A" | Dim. "B" |
|---------|----------|----------|
| No. 201 | 19/64" | 7/32" |
| No. 202 | 21/64" | 17/64" |

Replaced by the No. 316 tool. Order these tools for replacement purposes only in case the office is equipped with the No. 200 tool.

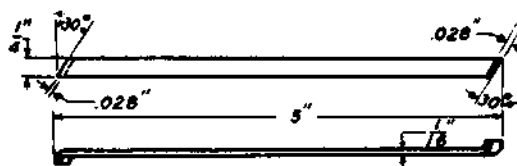
TOOL, 203



Index wheel holder.

For use on A and B type sequence switches and No. 155A and 157 type interrupters.

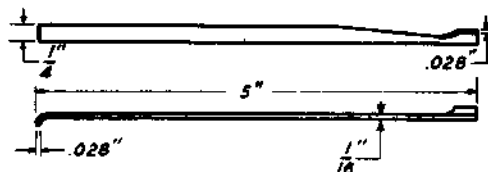
TOOL, 206



30° Offset screwdriver.

For general use.

TOOL, 207

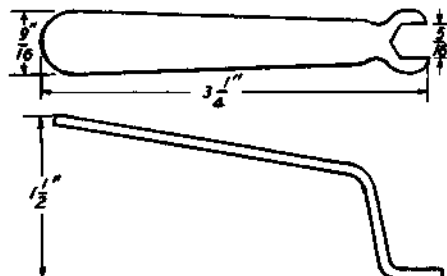


90° offset screwdriver.

For general use.

TOOL, 208 Manufacture Discontinued.
Replaced by the No. 349 tool.

NO. 209 TOOL.



5/16" Hex. open single end offset wrench.

For general use.