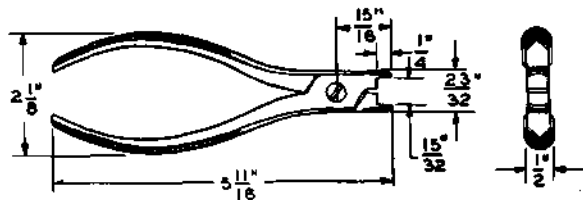


CODED TOOLS

210 TO 225

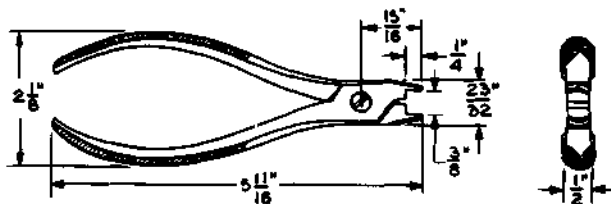
DESCRIPTION

210



Key button pliers. For use in removing key buttons.

211



Key button pliers. For use in removing key buttons.

212

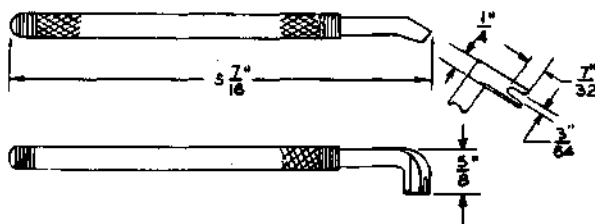
MFR DISC

Replaced by the 340 tool.

213

MFR DISC

215



Spring adjuster. For general use.

216

MFR DISC

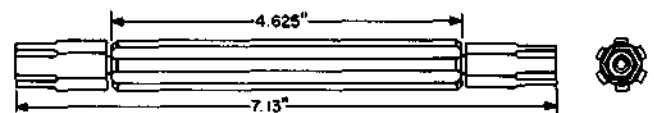
Replaced by the 216B tool.

216B

MFR DISC

Replaced by the 216C tool.

→216C←



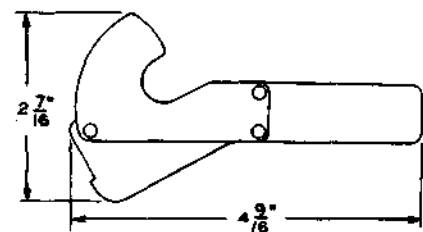
Combination 3/8-inch and 7/16-inch hex. double-end socket wrench. For use in placing fuses in cable terminals. Replaces the 216B and 311 tools.

218

MFR DISC

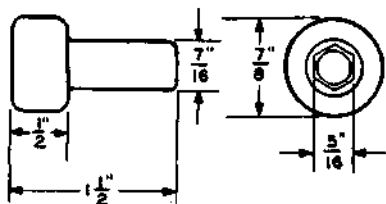
Replaced by the 218B tool.

218B



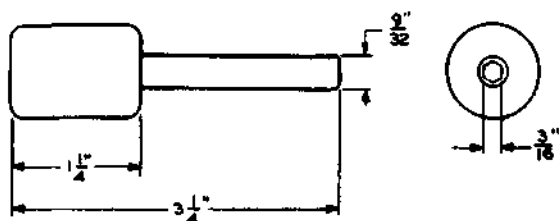
"A" cam short-circuiting tool. Replaces the 218 tool. For use on A- and B-type sequence switches and 155A- and 157-type interrupters.

219



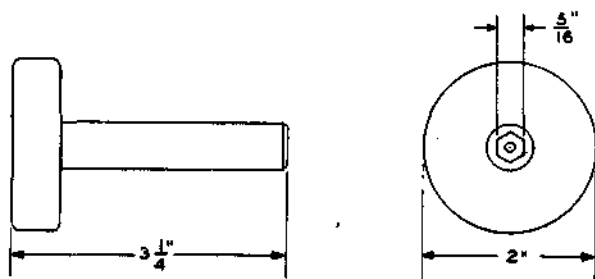
5/16-inch hex. single-end socket wrench. This tool forms part of the 221 tool. For use on 51-type dial testers.

220



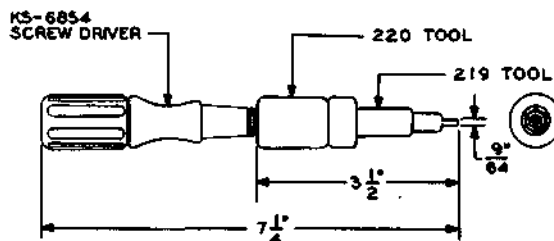
3/16-inch hex. single-end socket wrench. This tool forms part of the 221 tool. For general use.

220B



5/16-inch hex. single-end socket wrench. For use on 214A selectors of 1-type translators in 4A Toll System.

221



Consists of 3/16-inch and 5/16-inch hex. single-end socket wrenches and a screwdriver. This tool is a combination of the 219 and 220 tools and the KS-6854 screwdriver. For use on flat-type relays.

222

MFR DISC

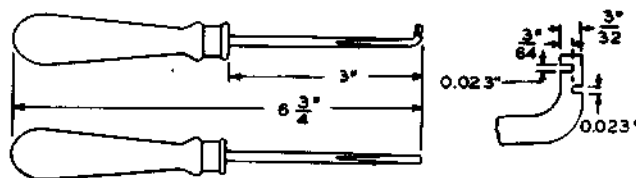
Replaced by the 310 tool.

223

MFR DISC

Replaced by the 273 tool.

224



Spring adjuster. For use on regulators, 10- and 14-type commutator brushes, and the KS-13835 readers of the AMA System.

225

MFR DISC

Replaced by the 225B tool.