

TELEPHONE SETS—1702B
CONNECTIONS

TABLE A
LINE AND RINGER CONNECTIONS

Wire or Lead		Individual or Bridged	Ring Pty	Tip Party (Note 1 and 2)		
				No Ident. GRD	Identifying Ground	
					1000 ohms	2650 ohms
Inside Wire at Conn. Block	Ring	R	R	R	R	R
	Tip	G	G	G	G	G
	GRD	Y	Y	Y	Y	Y
Dial Light Transformer	1	Y	Y	Y	Y	Y
	2	B	B	B	B	B
Mtg. Cord at Conn. Block	R	R	R	G	G	G
	G	G	G	R	R	R
	Y	G	Y	Y	Y	Y
	BK	B	B	B	B	B
	W	Y	Y	Y	Y	Y
Ringer Leads	R	K	K	K	K	K
	BK	G	G	G	G	G
	S	*	*	*	B	*
	S-R	*	*	*	*	B
Switchhook Leads	S-BR	C	C	F	F	F
	S-W	F	F	C	C	C

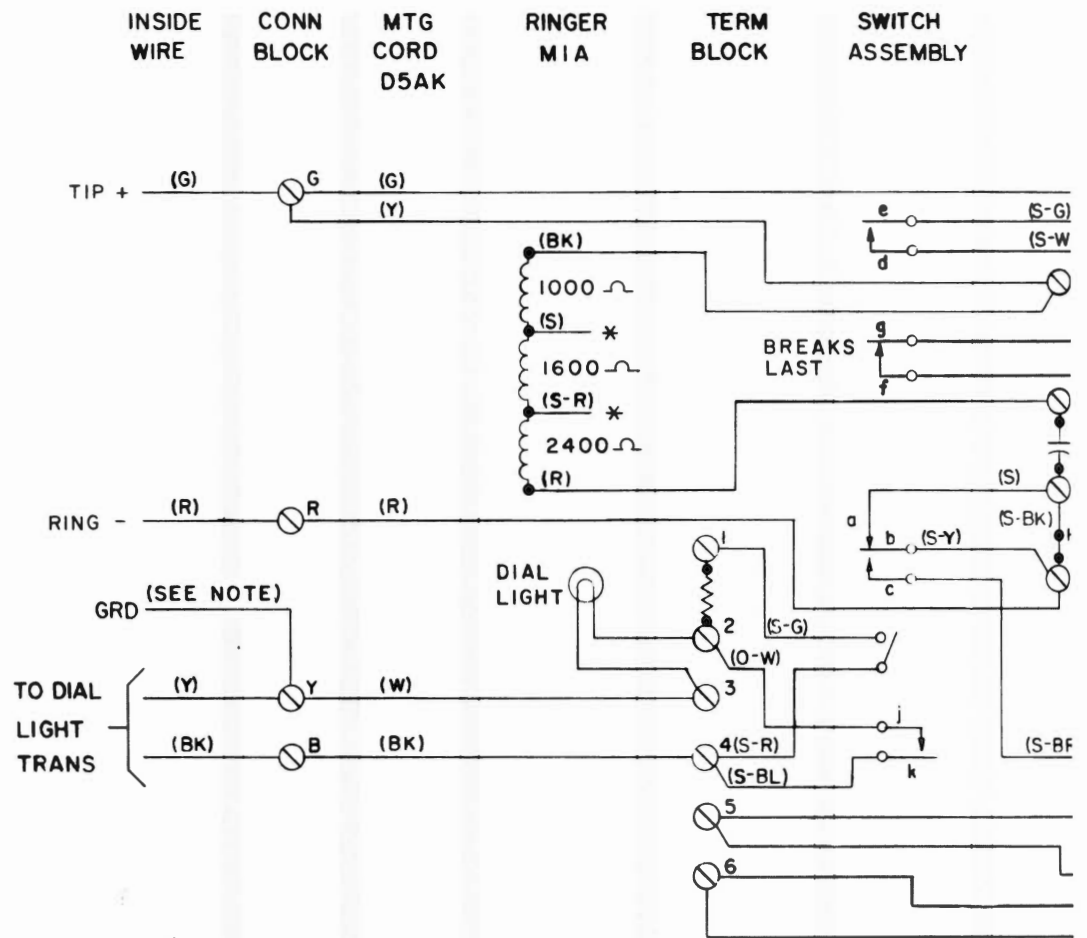
Note 1: For 1000 or 2650 ohm identifying ground, remove S-BK from A of network, insulate and store.

Note 2: Sets are shop wired for bridged or ring party. For tip party with or without identifying ground, see Table A.

* Insulated and stored.

TABLE B
**RINGER LEAD CONNECTIONS TO
SILENCE RINGER PERMANENTLY**

Tip Party Ident GRD	Ringer Leads			
	R	BK	S	S-R
1000 ohms	B	G	B	*
2650 ohms	B	G	*	B
Note: Move (R) ringer lead from K to G on network for all classes of service except those listed above.				

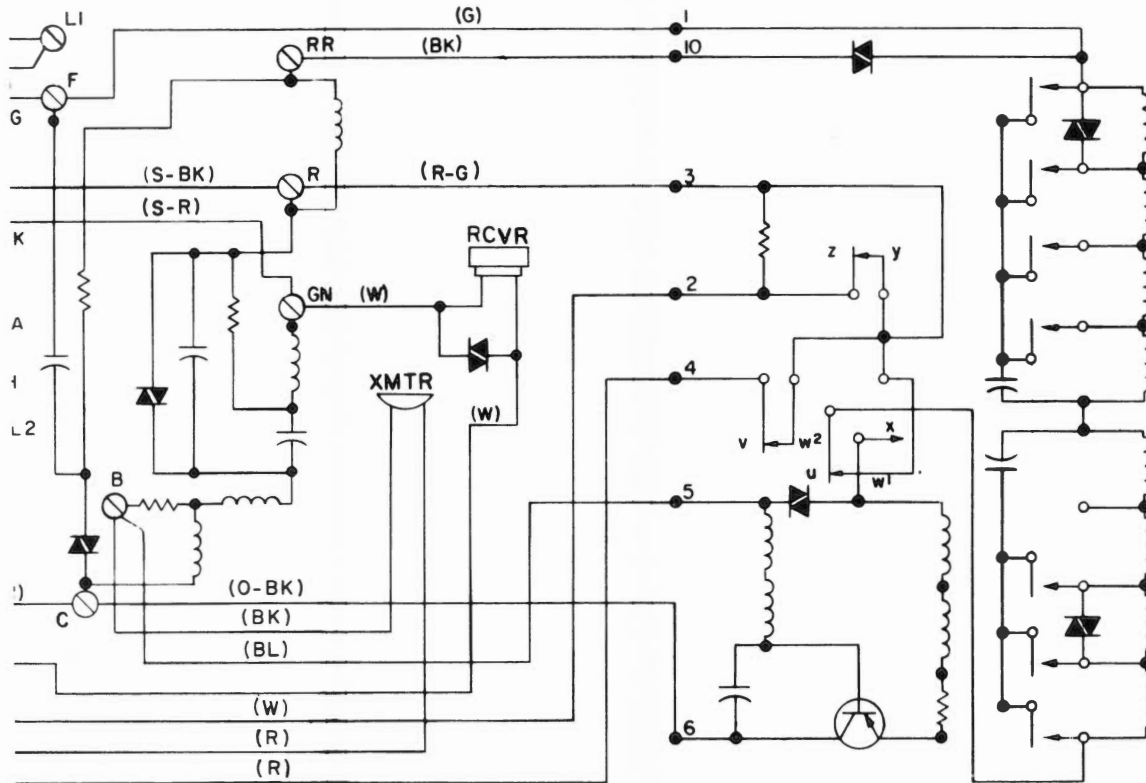


Not
if n
nec
ligh
* I

NETWORK
4010B

HANDSET
G3AR

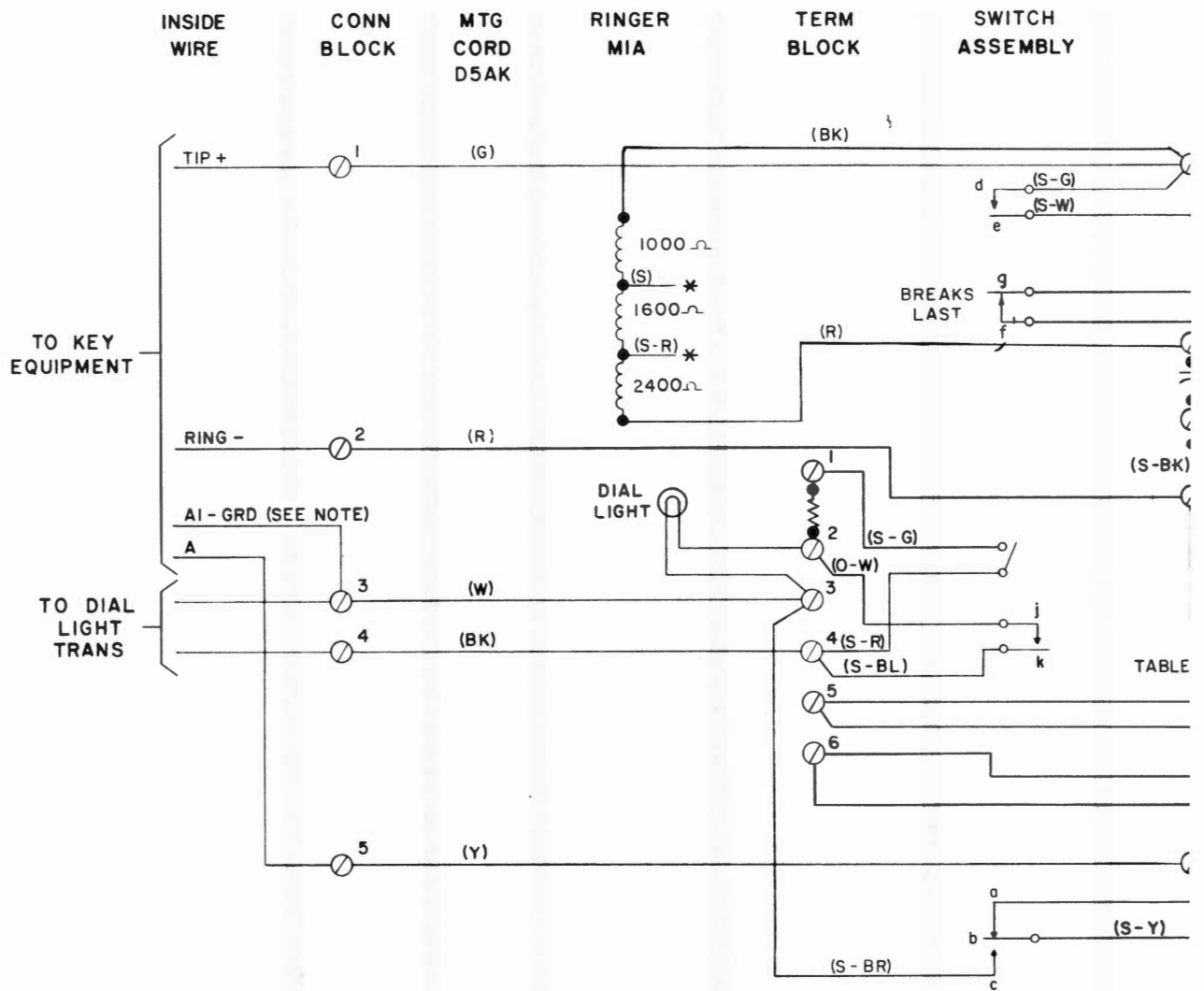
DIAL
25H4



e: Ground may be omitted
ot required for service. Not
ssary for protection of dial
t transformer.

isolated and stored.

Fig. 1 — 1702B Telephone Set



M

WITH

Wire o Lead
Switchh
Ringe
Place M Cord or S

NETWORK
4010B

HANDSET
G3AR

DIAL
25H4

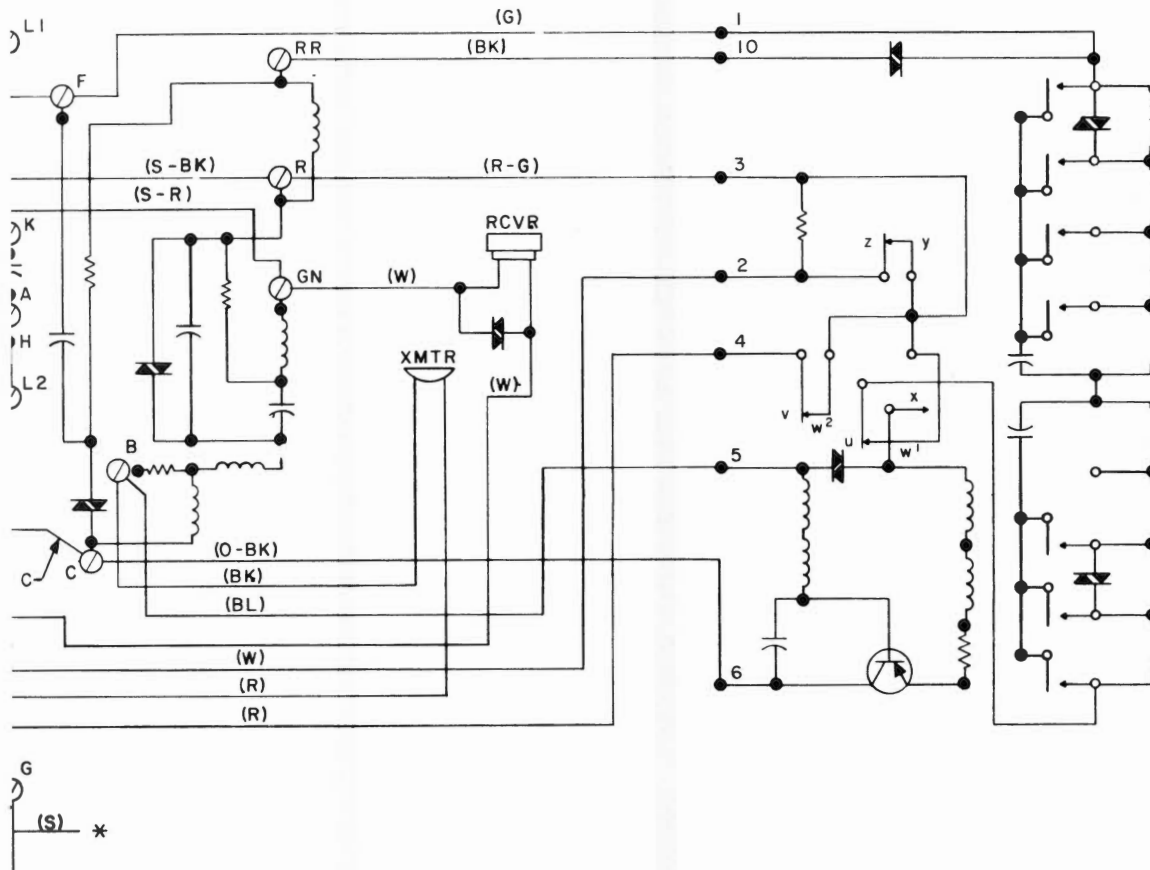


TABLE C

MODIFICATIONS FOR USE

1A1 AND 1A2 KEY SYSTEMS

r	Color	From	To
ook	S-Y	L2	G
	S-BR	C	3
	S	A	*
r	BK	G	L1
1W trap		L2	C

Note: Ground may be omitted if not required for service. Not necessary for protection of dial light transformer.

* Insulated and stored.

Fig. 2 — 1702B Telephone Set, Connections for 1A1 and 1A2 Key Telephone System