

SPECIAL CONNECTIONS FOR TELEPHONE SETS AND SUBSCRIBER SETS  
USING 3-ELEMENT ELECTRON TUBES IN RINGING CIRCUIT

1.00 INTRODUCTION

This section is issued:

- To give 3-element tube connections at negative ring and tip parties of 4-party full selective and 8-party semiselective lines in step-by-step offices with Automatic Number Identification (ANI).

2.00 GENERAL

2.01 Connect R lead from 426A tube to L1 on all negative ring and tip parties at 4- and 8-party stations. This bridges the control gap of the tube across the line and prevents bell tap and possible false test for tip party.

2.02 Fig. 1 shows these tube connections using the 556-type telephone set as an example.

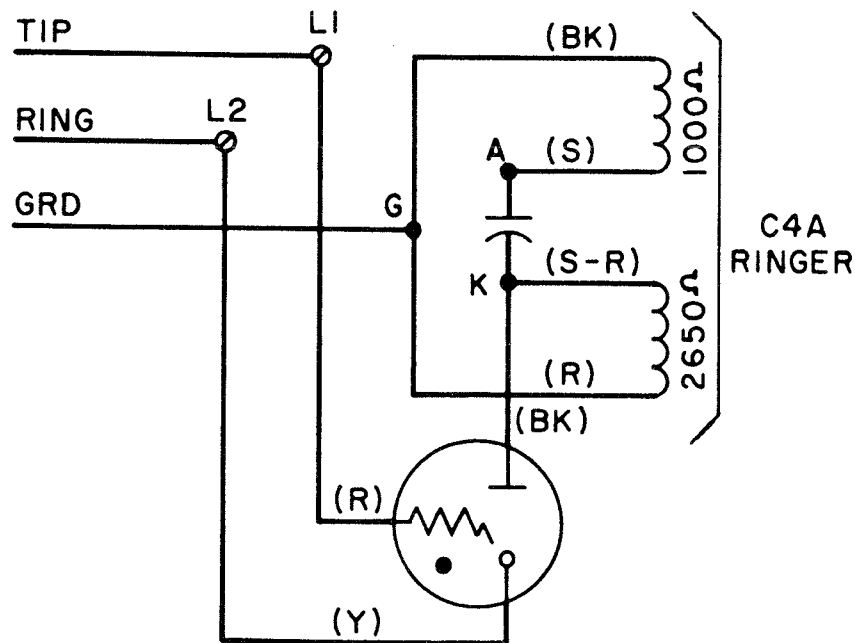


Fig. 1 - Tube Connections for 556-Type Telephone Set  
at Negative Ring Station

**SECTION 500-115-400**

2.03 The connection information given here will be included in the following sections when they are reissued.

502-200-401	Subscriber Sets - 634AT - Common Battery - Induction Coil Type - Connections
502-200-406	Subscriber Sets - 686A - Common Battery - Network Type - Connections
502-210-401	Subscriber Sets - Ringer and Relay Types - Polarized Ringing - 531C, 534DT, 592C, 687B - Common and Local Battery - Connections
510-110-405	Subscriber Sets - 634YT - Local Battery - Connections
510-110-408	Subscriber Sets - 634YDT - Local Battery - Connections
502-400-404	Telephone Sets - 306A, C, 5306C (Tube Sets) - Common Battery - Connections
502-400-406	Telephone Sets - 306G (Tube Set) - Common Battery - Connections
510-130-401	Telephone Sets - 309A, C - Local Battery - Connections
502-400-411	Telephone Sets - 356A, C (Tube Sets) - Common Battery - Connections
502-510-401	Telephone Sets - 500C, D and 501C, D - Common Battery - Connections
502-510-402	Telephone Sets - 500E, F and 501F - (Plunger Switch to Prevent Party-Line Interference) - Common Battery - Connections
502-510-403	Telephone Sets - 500H (Illuminated Dial) - Common Battery - Connections
502-510-406	Telephone Sets - 500P and 501P - (Illuminated Dial) - Common Battery - Connections
502-510-408	Telephone Sets - 500U and 501U - (Illuminated Dial and Night Light) - Common Battery - Connections
502-520-402	Telephone Sets - 532A, B and 533A, B - (Amplifier Sets for Impaired Hearing) - Common Battery - Connections
502-520-400	Telephone Sets - 507A, B; 509A, B; 557A, B; and 559A, B - (Amplifier Sets for Long Loops) - Common Battery - Connections
502-510-410	Telephone Sets - 554A, B and 556A, B - Common Battery - Connections
502-710-400	Telephone Sets - 701B - Connections
502-710-401	Telephone Sets - 701D - Connections
502-410-400	Telephone Sets - 300, 325 Types - Outdoor Locations - Connections