

## RINGER ISOLATOR

### (PO895087 KIT OF PARTS)

### IDENTIFICATION

#### 1. GENERAL

**1.01** The ringer isolator is an electronic switch which isolates a grounded ringer from the telephone line. It is intended for use on lines having induced voltage up to 140 volts RMS.

**1.02** The ringer isolator is designed to allow for easy installation in telephone set housings, Bell Chimes and L-type ringers, and subscriber sets. Due to limitations this device cannot be mounted in 701B Princess. Substitute a 702BQ1A, install the ringer isolator under the dial. Disconnect the rcd ringer lead from the K terminal and splice the yellow lead of a 548A capacitor, using the yellow lead of a 548A capacitor, using the D161488 or QCM12A connector. Connect white lead of capacitor to black lead of ringer isolator.

**1.03** The isolator may be used on all grounded ringers except those used in 4-party full selective and 8-party semi-selective ringing service.



*One ringer isolator is required for each grounded ringer on the line. Lines equipped with isolators cannot be tested for continuity by conventional test desk procedures.*

#### 2. IDENTIFICATION

**2.01** The ringer isolator must be ordered as a PO895087 Kit, Ringer Isolator which consists of the components shown in Fig. 1.

**2.02** The ringer isolator (Fig. 1) consists of a two-transistor switching circuit mounted on a printed circuit board and encased in a vinyl insulating sleeve. The ringer isolator schematic is shown in Fig. 2. For connections refer to section 500-112-100.

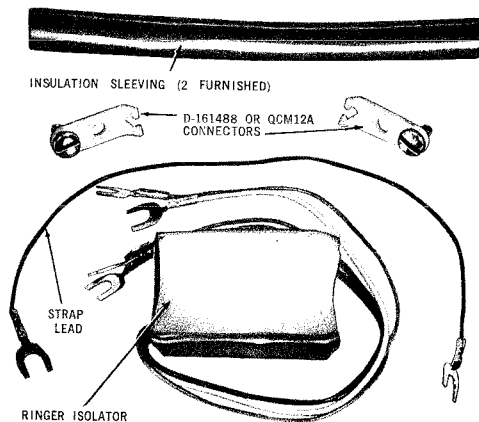


Fig. 1 — PO895087 Kit, Ringer Isolator—Components

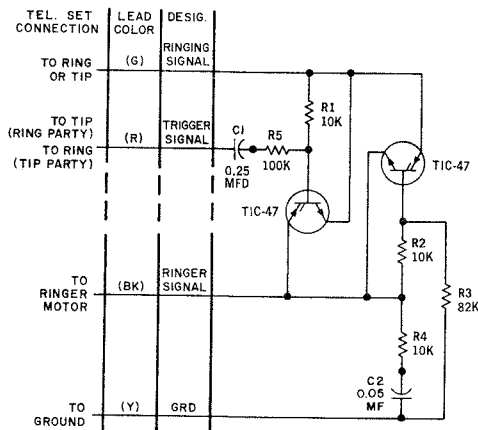


Fig. 2 — Ringer Isolator — Schematic