

SERVICE

500L/M AND 500MM TELEPHONE SETS

1. GENERAL

1.01 Reissued to:

- Revise Fig. 1 through 4

- Remove 500LM telephone set information (never manufactured)
- Add Table A

♦ TABLE A ♦

LINE AND RINGER CONNECTIONS FOR COMMON AUDIBLE RING WITH 1A1 OR 1A2 KTS

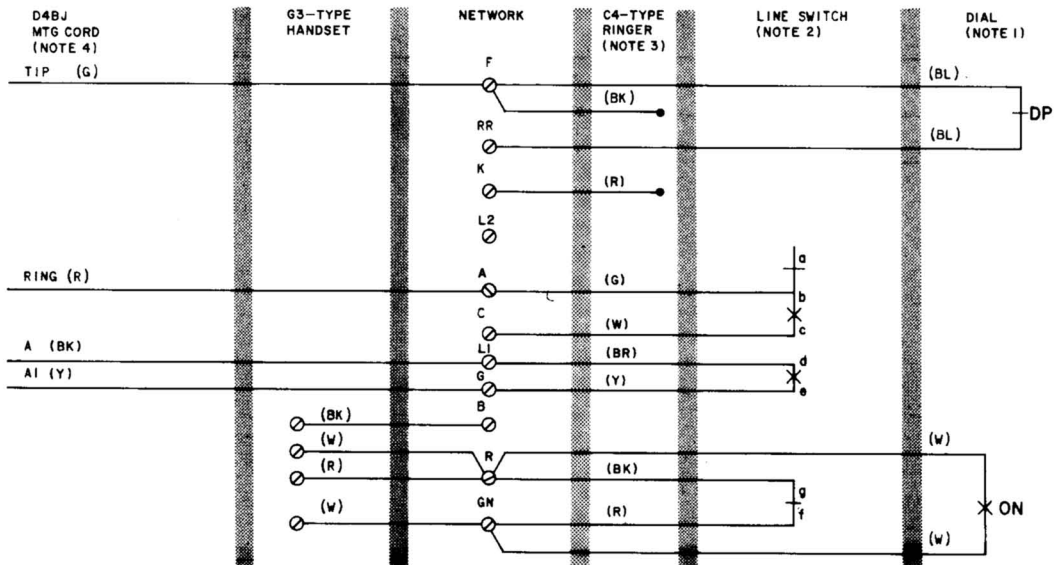
MOUNTING CORD LEAD AT CONNECTING BLOCK						CONNECTIONS IN SET							
						6-CONDUCTOR MOUNTING CORD OR 6-CONDUCTOR JACK LEADS						C4B RINGER LEADS	
(G)	(R)	(BK)	(Y)	(BL)	(W)	(G)	(R)	(BK)	(Y)	(BL)	(W)	(BK)	(R)
Tip	Ring	A	A1	B1	R1	F	A	L1	G	L2	Note 3	L2	Note 3
								Note 4					

Notes:

1. Sets are furnished wired for 1A1 or 1A2 KTS with bridged ringing.
2. If set is equipped with a 4-conductor mounting cord (Fig. 1, 2, and 3) replace with a 6-conductor mounting cord. If set is equipped with a 4-conductor jack and 4-conductor mounting cord (Fig. 4), replace with a 6-conductor jack and 6-conductor mounting cord.
3. Use D-161488 connector to connect the (R) ringer lead to the (W) mounting cord or jack lead.
4. On Fig. 2 (BK) lead connects to terminal 6 and (Y) lead connects to terminal 5 on terminal strip.

NOTICE

Not for use or disclosure outside the
Bell System except under written agreement



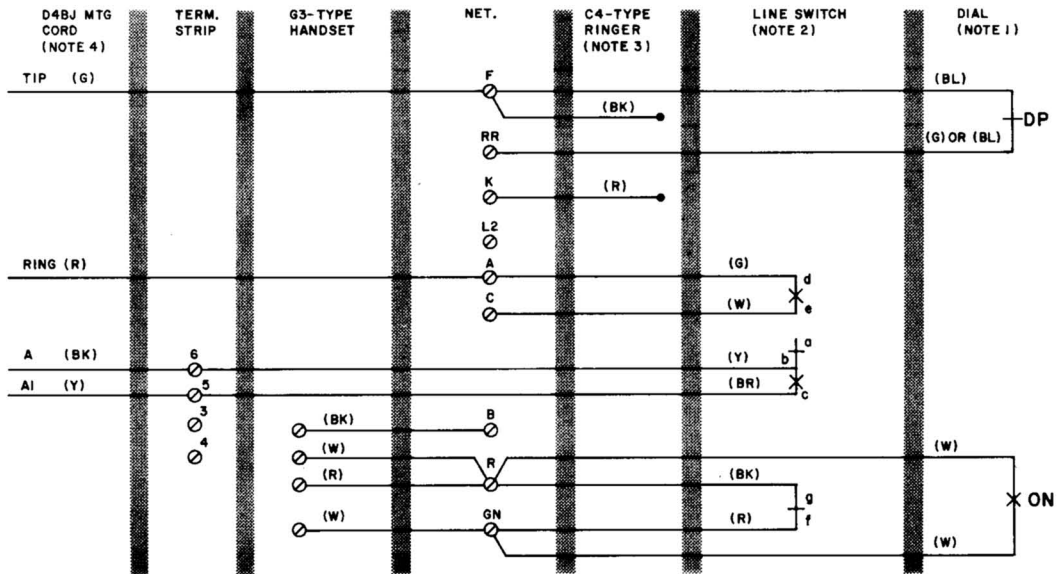
NOTES:

1. FOR MANUAL SERVICE ON 1A1 AND 1A2 KTS, MOVE (G) MOUNTING CORD LEAD AND (BK) RINGER LEAD FROM TERMINAL F TO RR ON NETWORK. REPLACE DIAL WITH APPROPRIATE APPARATUS BLANK.
2. TO PREVENT A FALSE HOLD CONDITION WHEN GOING ON HOOK, THE TIP AND RING CONTACTS OF THE LINE SWITCH MUST BREAK BEFORE A-LEAD CONTACTS BREAK.
3. TO SILENCE RINGER PERMANENTLY, REFER TO APPROPRIATE RINGER SECTION IN DIVISION 501.
4. IF COMMON AUDIBLE RINGING IS REQUIRED, A 6-CONDUCTOR MOUNTING CORD IS REQUIRED. REFER TO TABLE A.

DP - DIAL PULSE CONTACT

ON - DIAL OFF-NORMAL CONTACT

Fig. 1—Early 500L/M Telephone Set, Connections With MD Line Switch and Lead Colors

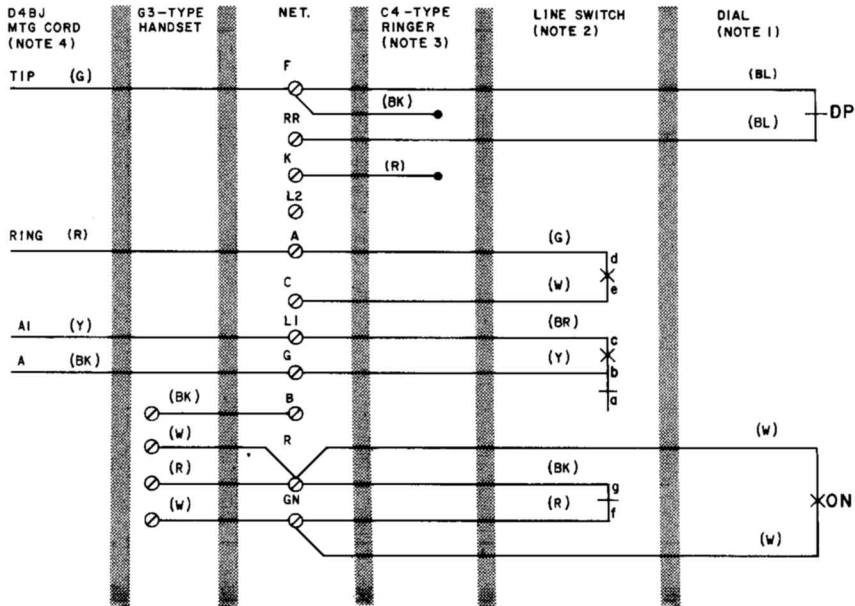


NOTES:

1. FOR MANUAL SERVICE ON 1A1 AND 1A2 KTS, MOVE (G) MOUNTING CORD LEAD AND (BK) RINGER LEAD FROM TERMINAL F TO RR ON NETWORK. REPLACE DIAL WITH APPROPRIATE APPARATUS BLANK.
2. TO PREVENT A FALSE HOLD CONDITION WHEN GOING ON HOOK, THE TIP AND RING CONTACTS OF THE LINE SWITCH MUST BREAK BEFORE A-LEAD CONTACTS BREAK.
3. TO SILENCE RINGER PERMANENTLY, REFER TO APPROPRIATE RINGER SECTION IN DIVISION 501.
4. IF COMMON AUDIBLE RINGING IS REQUIRED A 6-CONDUCTOR MOUNTING CORD IS REQUIRED. REFER TO TABLE A.

DP - DIAL PULSE CONTACT
ON - OFF-NORMAL CONTACT

Fig. 2—Later 500L/M Telephone Set, Connections With Current Line Switch Lead Colors, and Terminal Strip



NOTES:

1. FOR MANUAL SERVICE ON 1A1 AND 1A2 KTS, MOVE (G) MOUNTING CORD LEAD AND (BK) RINGER LEAD FROM TERMINAL F TO RR ON NETWORK. REPLACE DIAL WITH APPROPRIATE APPARATUS BLANK.
2. TO PREVENT A FALSE HOLD CONDITION WHEN GOING ON HOOK THE TIP AND RING CONTACTS OF THE LINE SWITCH MUST BREAK BEFORE A-LEAD CONTACTS BREAK.
3. TO SILENCE RINGER PERMANENTLY, REFER TO APPROPRIATE RINGER SECTION IN DIVISION 501.
4. IF COMMON AUDIBLE RINGING IS REQUIRED, A 6-CONDUCTOR MOUNTING CORD IS REQUIRED. REFER TO TABLE A.

DP - DIAL PULSE CONTACT
ON - OFF-NORMAL CONTACT

Fig. 3—Current 500L/M Telephone Set, Current Connections for Sets not Equipped with Terminal Strip

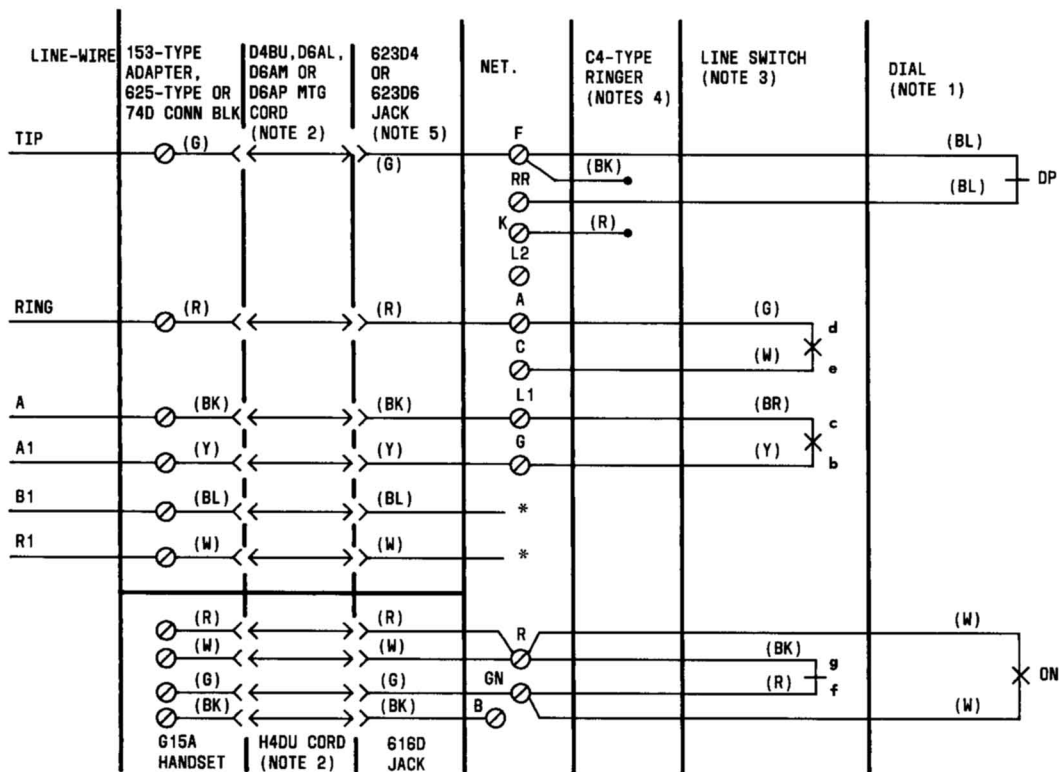


Fig. 4—500MM Telephone Set, Connections