

CONTEMPRA — MESSAGE WAITING

QSK 100 BX

1. GENERAL

1.01 The section covers identification, installation connections and maintenance for the QSK 100 BX Contempra Message Waiting Telephone.

1.02 This section is reissued to:

- Add Fig. 1.
- Describe the message waiting feature.
- Include maintenance procedures.
- Update functional schematic.

2. IDENTIFICATION

2.01 The QSK 100 BX Telephone Set is equipped with a message waiting lamp (Fig. 1). The red message waiting lamp cap is factory molded into the housing of the telephone set. The lamp protrudes through the housing into the lamp cap.

2.02 The QSK 100 BX Telephone Set is to be used with a PBX which provides the message waiting feature. It is arranged to receive and hold a visual signal under control of an attendant at a PBX. General application for this feature is in a hotel or motel, however, it can be provided for any station under the control of an attendant.

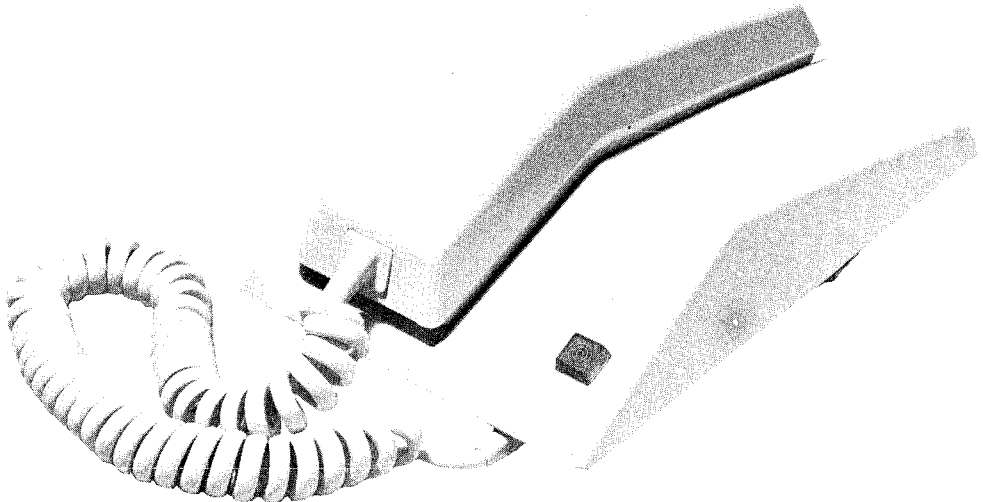


Fig. 1 — Contempra — Message Waiting QSK 100 BX

SECTION 502-321-911CA

3. INSTALLATION

3.01 The connections for the Message Waiting QSK 100 Telephone Set are shown in Fig. 2. See Section 502-321-910 for installation of the Contempra Telephone Set.

4. MAINTENANCE

4.01 Replace the message waiting lamp (Kid-5 CM26268) by removing the telephone set housing and replace the lamp in the socket. For the maintenance of other components of the Contempra Telephone Set see Section 502-321-910.

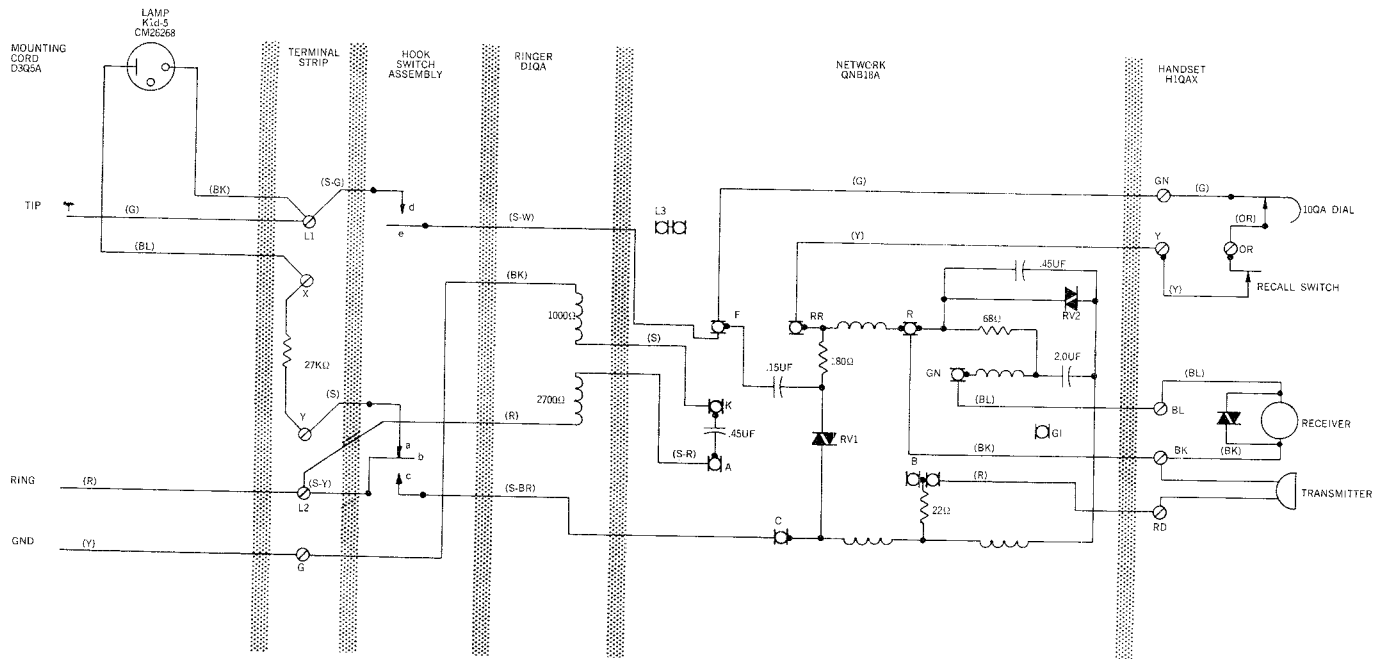


Fig. 2 — QSK 100 BX Schematic