

TELEPHONE SETS — 1500D, 2500D, 1554B AND 2554B  
CONNECTIONS

**TABLE A**  
**LINE AND RINGER CONNECTIONS**

| Wire or Lead                                  |      | ▽ Individual<br>or<br>Bridged | ▽ Ring<br>Party | Tip Party               |                               |
|---|------|-------------------------------|-----------------|-------------------------|-------------------------------|
|   |      |                               |                 | (X) No<br>Idfy.<br>Grd. | Identifying Ground<br># 2650Ω |
| Mounting Cord<br>In Set                       | R    | L2                            | L2              | L2                      | L2                            |
|   | G    | L1                            | L1              | L1                      | L1                            |
|   | Y    | G                             | G               | G                       | G                             |
| Ringer<br>Leads                               | R    | L2                            | L2              | L2                      | B                             |
|   | BK   | G                             | G               | G                       | B                             |
|   | S    | K                             | K               | K                       | K                             |
|   | S-R  | A                             | A               | A                       | G                             |
| Switchhook<br>Leads                           | S    | L2                            | L2              | L2                      | A                             |
|   | S-W  | RR                            | RR              | C                       | C †                           |
|   | S-BR | C                             | C               | RR                      | RR †                          |
| Mounting Cord<br>At Connecting<br>Block       | R    | R                             | R               | G                       | G                             |
|   | G    | G                             | G               | R                       | R                             |
|   | Y    | G                             | Y               | Y                       | Y                             |
| Line Wire at<br>Connecting<br>Block or In Set | Ring | R                             | R               | R                       | R                             |
|   | Tip  | G                             | G               | G                       | G                             |
|   | Grd  | Y                             | Y               | Y                       | Y                             |

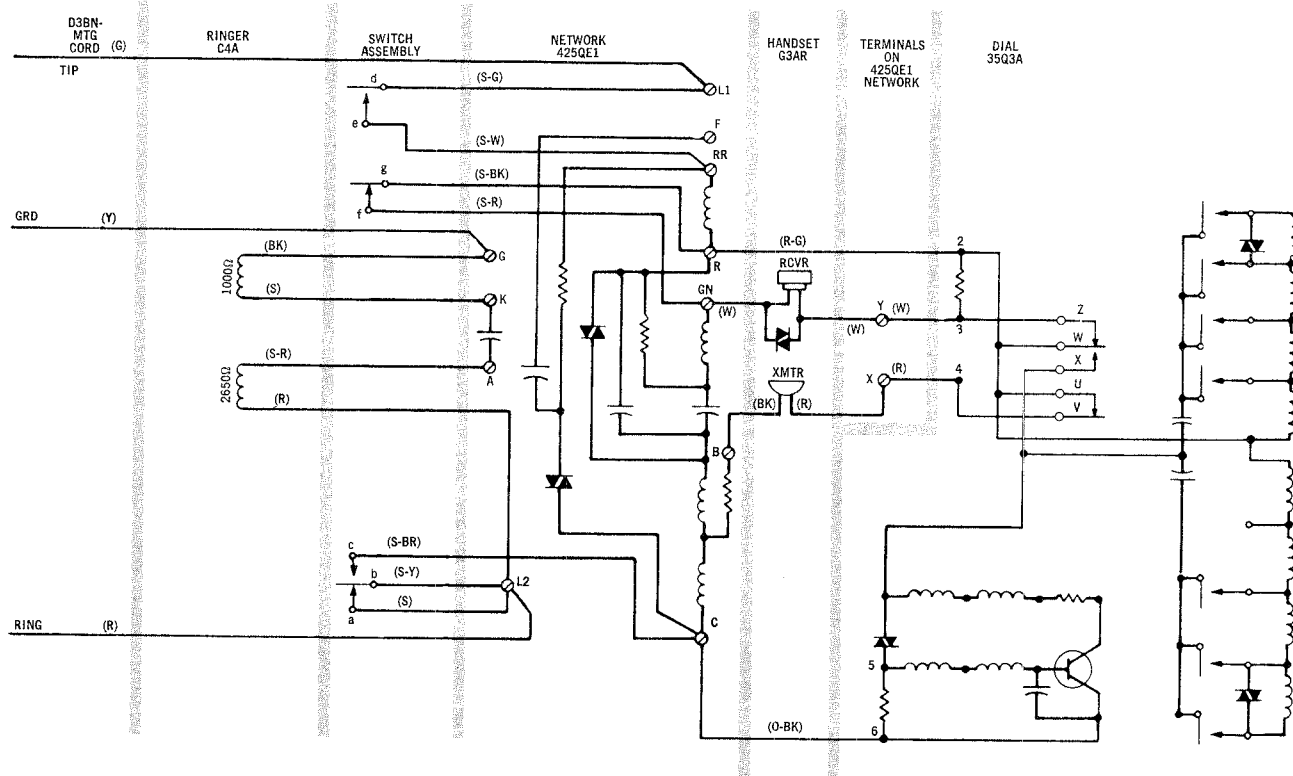


Fig. 1 — 1500D, 2500D and 2554B Telephone Sets,  
Connections with 35Q3A Dial

**TABLE B**  
**LINE AND RINGER CONNECTIONS**

| Wire or Lead                                     |      |      | ▽ Individual or Bridged |
|--|------|------|-------------------------|
| Mounting Cord<br>In Set                          |      | R    | L2                      |
|  |      | G    | RR                      |
|  |      | Y    | L1                      |
|  |      | BK   | G                       |
| Ringer<br>Leads                                  |      | R    | L2                      |
|  |      | BK   | RR                      |
|  |      | S    | K                       |
|  |      | S-R  | A                       |
| Switchhook<br>Leads                              |      | S    | L2                      |
|  |      | S-W  | G                       |
|  |      | S-BR | C                       |
| Mounting Cord<br>At Connecting<br>Block          |      | R    | R                       |
|  |      | G    | G                       |
|  |      | Y    | Y                       |
|  |      | BK   | BK                      |
| Line wire at<br>Connecting<br>Block or<br>In Set | Ring | R    | L2                      |
|  | Tip  | G    | RR                      |
|  | A    | Y    | L1                      |
|  | A1   | BK   | G                       |



**TABLE C**  
**LINE AND RINGER CONNECTIONS**

| Wire or Lead                            |      | ▽ Individual<br>or<br>Bridged | ▽ Ring<br>Party | Tip Party               |                    |
|---|------|-------------------------------|-----------------|-------------------------|--------------------|
|   |      |                               |                 | (X) No<br>Idfy.<br>Grd. | Identifying Ground |
|   |      |                               |                 |                         | #2650Ω             |
| Mounting Cord<br>In Set                 | R    | L2                            | L2              | L2                      | L2                 |
|   | G    | L1                            | L1              | L1                      | L1                 |
|   | Y    | G                             | G               | G                       | G                  |
| Ringer<br>Leads                         | R    | L2                            | L2              | L2                      | B                  |
|   | BK   | G                             | G               | G                       | B                  |
|   | S    | K                             | K               | K                       | K                  |
|   | S-R  | A                             | A               | A                       | G                  |
| Switchhook<br>Leads                     | S    | L2                            | L2              | L2                      | A                  |
|   | S-W  | F                             | F               | C                       | C †                |
|   | S-BR | C                             | C               | F                       | F †                |
| Mounting Cord<br>At Connecting<br>Block | R    | R                             | R               | G                       | G                  |
|   | G    | G                             | G               | R                       | R                  |
|   | Y    | G                             | Y               | Y                       | Y                  |
| Line Wire at<br>Connecting<br>Block     | Ring | R                             | R               | R                       | R                  |
|   | Tip  | G                             | G               | G                       | G                  |
|   | Grd. | Y                             | Y               | Y                       | Y                  |

**TABLE D**  
**RINGER LEAD CONNECTIONS**  
**TO SILENCE RINGER PERMANENTLY**

| Tip Party<br>Identifying Ground  | Ringer Lead |       |       |       |
|--|-------------|-------|-------|-------|
| OHMS   | Red         | Black | Slate | S Red |
| 2650   | B           | K     | K     | G     |
| <p>For all classes of service except that listed above.</p> <p>Connect yellow mounting cord lead to same terminal as red mounting cord lead at Connecting Block.</p> |             |       |       |       |

**NOTES:**

- SET TO BE WIRED AS SHOWN IN CONNECTING DIAGRAM (INDIVIDUAL OR BRIDGED AND RING PARTY).
- RINGER CUT-OFF CONTROL BY CUSTOMER:  
BEND STOP NEXT TO DETENT OR RINGER VOLUME CONTROL SO THAT IT COMPLETELY CLEARS THE RIM OF THE RINGER FRAME. THIS PROVIDES A FURTHER POSITION ON VOLUME CONTROL WHICH PREVENTS ARMATURE MOVEMENT.
- WHEN THE HANDSET IS REMOVED FROM THE CRADLE, CONTACT GF BREAKS LAST.
- ▽ IN TABLE A AND C, CONNECTIONS FOR INDIVIDUAL OR BRIDGED AND RING PARTIES ARE FOR FLAT AND MESSAGE RATE SERVICE.
- (X) IN TABLE A AND C, CONNECTIONS ARE FOR TIP PARTY EXCEPT MESSAGE RATE.
- † WHERE DIFFICULTY IS EXPERIENCED IN REVERSING THESE LEADS, USE QCM9A CONNECTORS AND M1W CORDS TO LENGTHEN THEM.
- # IN TABLE A AND C, CONNECTIONS ARE FOR STEP-BY-STEP WITH AUTOMATIC TICKETING, STEP-BY-STEP WITH AUTOMATIC MESSAGE ACCOUNTING AND MODIFIED CROSSBAR WITH AUTOMATIC MESSAGE ACCOUNTING.



**TABLE E**  
**LINE AND RINGER CONNECTIONS**

| Wire or Lead                                     |      |      | ▽ Individual<br>or<br>Bridged |
|--|------|------|-------------------------------|
| Mounting Cord<br>In Set                          |      | R    | L2                            |
|  |      | G    | F                             |
|  |      | Y    | L1                            |
|  |      | BK   | G                             |
| Ringer<br>Leads                                  |      | R    | L2                            |
|  |      | BK   | F                             |
|  |      | S    | K                             |
|  |      | S-R  | A                             |
| Switchhook<br>Leads                              |      | S    | L2                            |
|  |      | S-W  | G                             |
|  |      | S-BR | C                             |
| Mounting Cord<br>At Connecting<br>Block          |      | R    | R                             |
|  |      | G    | G                             |
|  |      | Y    | Y                             |
|  |      | BK   | BK                            |
| Line Wire at<br>Connecting<br>Block or<br>In Set | Ring | R    | L2                            |
|  | Tip  | G    | F                             |
|  | A    | Y    | L1                            |
|  | A1   | BK   | G                             |

**NOTES:**

1. SET TO BE WIRED AS SHOWN IN CONNECTING DIAGRAM (INDIVIDUAL OR BRIDGED AND RING PARTY).
2. RINGER CUT-OFF CONTROL BY CUSTOMER: BEND STOP NEXT TO DETENT OR RINGER VOLUME CONTROL SO THAT IT COMPLETELY CLEARS THE RIM OF THE RINGER FRAME. THIS PROVIDES A FURTHER POSITION ON VOLUME CONTROL WHICH PREVENTS ARMATURE MOVEMENT.
3. WHEN THE HANDSET IS REMOVED FROM THE CRADLE, CONTACT GF BREAKS LAST.
- ▽ IN TABLE E, CONNECTIONS FOR INDIVIDUAL OR BRIDGED PARTIES ARE FOR FLAT AND MESSAGE RATE SERVICE.
4. TO SILENCE RINGER PERMANENTLY, TERMINATE BK RINGER LEAD ON TERMINAL K OF NETWORK.



