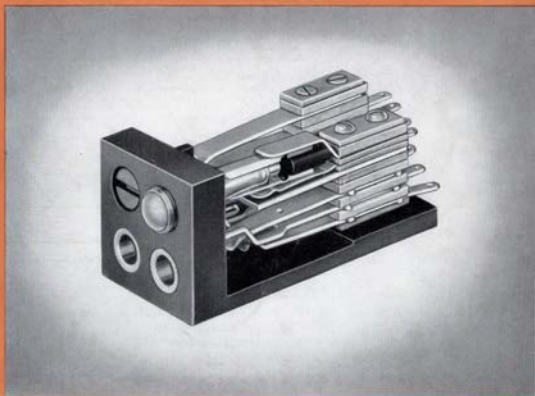


STROMBERG-CARLSON

INDUSTRIAL BULLETIN

JACKS and PLUGS



STROMBERG-CARLSON COMPANY

A DIVISION OF GENERAL DYNAMICS CORPORATION

What's inside . . .

. . . this bulletin is arranged in an order that we believe will be most convenient to you. Items are arranged in associated groups, for example: Starting with a particular mounting, the next item includes all jacks that can be used with this mounting; then all plugs that fit these jacks are shown, followed by typical cords to fit those plugs.

STROMBERG-CARLSON JACKS AND PLUGS	1
Design Features	2
Duratex Cords	3
93 AND 94 TYPE JACK MOUNTINGS	5
99 AND 100 TYPE JACK MOUNTINGS	8
89 AND 90 TYPE JACK MOUNTINGS	10
INDIVIDUAL JACKS	12
36 POINT PLUG AND JACK	13
QUADRUPLE LAMP, JACK OR KEY MOUNTING	14
LAMPS	15
LAMP CAPS	16
LAMP SOCKETS	19
DESIGNATION STRIPS	21

FOR YOUR INFORMATION

Send all orders and inquiries regarding Stromberg-Carlson Jacks and Plugs to:

**Industrial Sales Department, Telecommunication Division
100 Carlson Road
Rochester 3, New York**

Terms are net 10 days E. O. M. (End of Month) billing.

All Agreements are made contingent upon strikes, fires, accidents or causes beyond our control.

Shipments on Jacks and Plugs will be made from Rochester, New York.

Unless otherwise agreed upon all goods are sold f. o. b. Rochester, New York. Transportation charges will therefore be collected by the carriers upon arrival of goods at destination, unless special arrangements for prepaid shipment have been made.

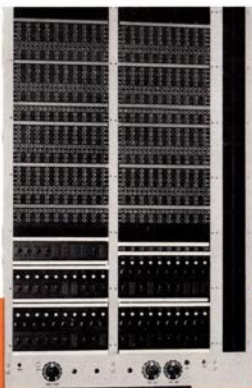
Stromberg-Carlson JACKS and PLUGS

• Stromberg-Carlson, who has been serving the communication industry for over 60 years, now offers equipment, proven by time and use, to industry at large.

In industry where positive electrical connections have to be made or transferred, Stromberg-Carlson jacks, plugs and allied apparatus can be used to best advantage. Such equipment has proven itself in the communication field where *exacting requirements* of design and manufacture are bywords. Items shown in this book have successfully withstood tests of time and service in communication applications and have been acclaimed for their excellence of operation.

Present and future planning for industry in general indicates that applications for jacks and plugs are increasing to meet the

forecasted demand in electrical and electronic apparatus as well as testing and control circuits.



Some typical uses for Stromberg-Carlson jacks can be found in the jack field of a testing panel (see picture at right) and jack panel for microwave equipment (see picture below).



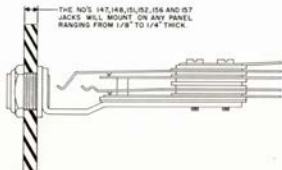
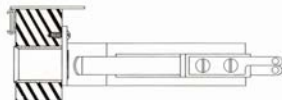
Jacks and Plugs

DESIGN FEATURES

JACK MOUNTINGS

- Mountings for individual jacks are made from the finest grade of hard rubber available to withstand years of hard use. Mountings for the No. 130 Strip Type Jacks are made of an excellent grade of phenolic molding powder.

All Jack Mountings have dull black finishes which reduce glare and eye strain when searching for a particular jack.



JACKS

All Stromberg-Carlson jacks are equipped with springs made from the best grade of nickel-silver available and are insulated with phenolic fibre of a quality that will not give under pressure. This combination serves to provide firm spring assemblies that will keep their original adjustments throughout their lives.

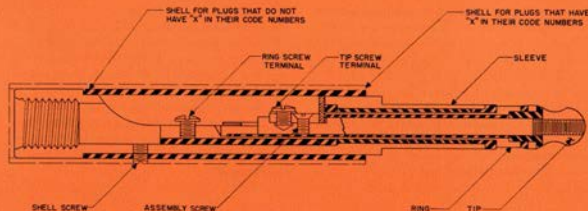
Some individual jacks are held in place on their mountings by the simple expedient of using a small screw through the jack mounting bracket (this is part of the jack) into the rear of the mounting strip, by using self-tapping screws (see top sketch in adjacent column). Other jacks require a locking nut, threaded on to the sleeve (see bottom sketch in adjacent column).

One feature of the No. 130 Strip Type Jack and individual jacks without locking nuts that stands out from all other type jacks is the ability to remove the sleeve, when worn beyond practical use, from the front of the jack. The 127 types of jacks have sleeves that are an integral part of the jack, and are so designed that wear appears on the plug, not the sleeve.

When jacks are furnished in strips, they are assembled in groups of ten or twenty; and are equipped with dull finished facestrips, either plain or with white line divisions indicating groups of five jacks.

PLUGS

The best test of quality of any plug is its long life. Stromberg-Carlson plugs excel in this quality for they are equipped with bronze tip conductors to withstand wear. The special alloy steel tip rods, combined with tough, hard rub-



ber insulation of the best quality, and heavy fibre shells for protection, give Stromberg-Carlson plugs the longest life of any plug in the field today.

Plugs are available that can handle two or three conductors. Shells that protect the terminals on the plugs are available in two sizes; one

size covers the terminal opening while the other covers the terminal opening as well as the butt end of the plugs. The latter of the two sizes is the larger and is found in plugs that have the letter "X" in their code numbers. These shells may be ordered in colors of black, gray or red.

Duralex Cords

- The conductors of Stromberg-Carlson cords are made in ribbon form from No. 37 AWG hard-drawn bronze alloy wire which is held to strict specifications. Before being used these ribbons are carefully tested for tensile strength, electrical resistance and maximum flexibility to make conductors of high conductivity and long-wearing qualities. The following step-by-step operations are examples of the care and thor-

oughness which have been important factors in building the reputation that Stromberg-Carlson has always had for dependable cord products. 1—To make up a conductor strand two bronze alloy ribbons are spiraled in opposite directions around a cotton thread in a manner to cause the thread to take up all tension. The ribbons overlap to insure strength and conductivity. This type of strand construction produces conduc-

Duralex Cords (conf'd)

tors which are free from noise after long, hard use.

2—Six of these strands are then wound around a strong center thread to form one conductor. Flexibility to a major degree is the result. Resistance in talking conductors is 0.9 ohms per 6 feet of cord length.

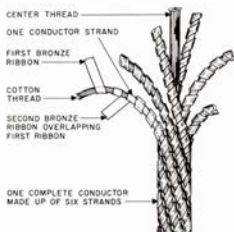
3—Two servings of celanese are next applied and then an outer cotton braid with a colored tracer. This provides a moisture proof insulation which remains flexible and offers effective resistance to dampness and moisture caused by constant handling.

4—The insulated conductors are then twisted together like the strands of a rope with proper fillers to form a round core.

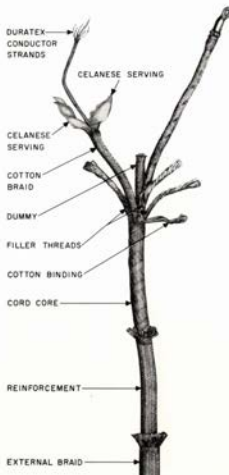
5—The core thus formed is kept in its original shape by the application of a cotton binder.

6—At the end next to the plug a reinforcing braid is applied to offset the effects of severe bending when the cord is used.

7—An outside braid of high tenacity nylon yarn, in standard colors of white, green, red or black, is then applied over the entire length of the cord, with the exception of the conductor terminating ends.



The two illustrations show more clearly than words the quality that is built into Stromberg-Carlson Duralex cords. These cords are built to last and, when used properly, will give long trouble-free service.



93 and 94 Type Jack Mountings

These mountings are used for placing Nos. 144, 145, 154 and †155 Jacks on panels in groups of 24 and 48. The material is hard black rubber and is equipped with one designation strip. This type of mounting is held in place by using two #8-32 screws on 94 mountings, and four #8-32 screws on 93 mountings for use in panels, or by using a No. 22 Jack Fastener for 19" racks.

Stock No.	Code	No. of Jacks	Length
200966-000	*(93)	48	17 ³ / ₁₆ "
200967-000	*(94)	24	17 ³ / ₁₆ "
204271-000	*(93-A)	48	18 ³ / ₁₆ "
204272-000	*(94-A)	24	18 ³ / ₁₆ "

†No. 155 Jacks require vacant spaces between jacks on account of the size of their spring pile-ups. Other jacks mount in adjacent mounting holes of the No. 93 or No. 94 Jack Mounting.

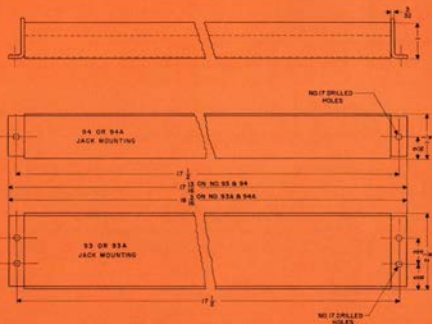
*Specify if mounting is to be drilled for screw type mounting.



The dimensions for both the 93 and 94 Mountings are in the sketch at right. The 93 Mounting will accommodate 48 jacks while the 94 Mounting will handle 24 jacks.



Dimensions for No. 22 Jack Fastener



93 and 94 Type Jack Mountings

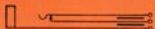
ALLIED APPARATUS



No. 144 Spring Combination



No. 145 Spring Combination



No. 154 Spring Combination



No. 158 and No. 159
Spring Combination



No. 155 Spring Combination



No. 170 Jack
Spring Combination

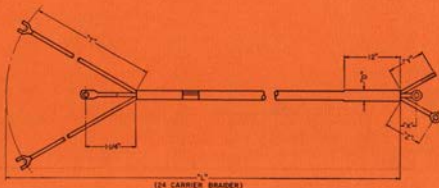


No. 171 Jack
Spring Combination

JACKS		PLUGS		CORDS		No. Cond.
Stock No.	Code	Stock No.	Code	Stock No.	Code	
801179-000	(144)	801501-000	(60)		(R-2-K)	2
202815-000	(144-A)	801502-000	(61)	212147-000	(S-2)	2
801181-000	(145)	801500-000	(59)	*212128-000	(S-3)	3
801182-000	(145-A)	801502-000	(61)	212147-000	(S-2)	2
		801500-000	(59)	*212128-000	(S-3)	3
801188-000	(154)	801503-000	(62)			
801189-000	(154-A)	801502-000	(61)	212147-000	(S-2)	2
801190-000	(155)	801500-000	(59)	*212128-000	(S-3)	3
802598-000	(158)	205532-000	(65-R)	†209784-000	(S-3)	3
802599-000	(159)	801502-000	(61)	212147-000	(S-2)	2
802600-000	(160)	205532-000	(65-R)	†209784-000	(S-3)	3
802601-000	(161)	205532-000	(65-R)	†209784-000	(S-3)	3
201562-000	(165)	205532-000	(65-R)	†209784-000	(S-3)	3
202488-000	(166)	801504-000	(63)	†209784-000	(S-3)	3
203015-000	(167)	801502-000	(61)	212147-000	(S-2)	2
204251-000	(167-A)	801500-000	(59)	*212128-000	(S-3)	3
203016-000	(168)	801502-000	(61)	212147-000	(S-2)	2
204252-000	(168-A)	801500-000	(59)	*212128-000	(S-3)	3
204308-000	(170)	801500-000	(59)	*212128-000	(S-3)	3
204309-000	(171)	801500-000	(59)	*212128-000	(S-3)	3
209147-000	(172)	206515-R	(56-R)	212141-000	(S-2)	2
209212-000	(173)	801500-000	(59)	*212128-000	(S-3)	3

*These cords are 5' long and have an outer covering of white nylon. Other lengths of 6' are available with covers of white, green, or red nylon. All other cords mentioned above are 5' long, white nylon braid, and can be made available in other lengths or colors when specified.

†Lengths shown are 3'. Other lengths of 5', 6' or 7' are available as well as covers of white, red, green or black nylon.





No. 56-B Plug



No. 61 Plug



No. 59 Plug



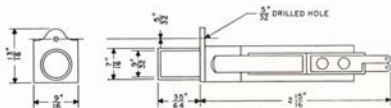
Line Drawing to Show Dimensions
of No. 62 Plug



No. 60 Plug



No. 63 Plug



Dimensions for Jacks used on 93 and 94 Type Jack Mountings

No. 165
Spring Combination

No. 161 Spring Combination

No. 165 Jack
Spring Combination.

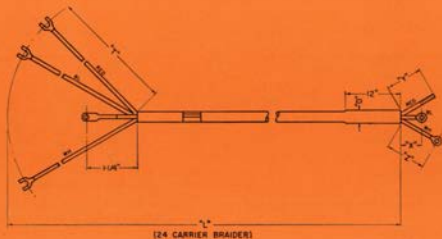
No. 166 Jock
Spring Combination



No. 167 Jack
Spring Combination

No. 168 Jack
Spring CombinationNo. 173 Jack
Spring Combination

No. 173 Jack
Spring Combination



99 and 100 Type Jack Mountings

These mountings are used for mounting 130 Type Jacks in groups of ten or twenty. Both mountings feature a ferrule or sleeve which extends through face of the mountings and joins the terminating conductor by means of a threaded screw connection. This design makes

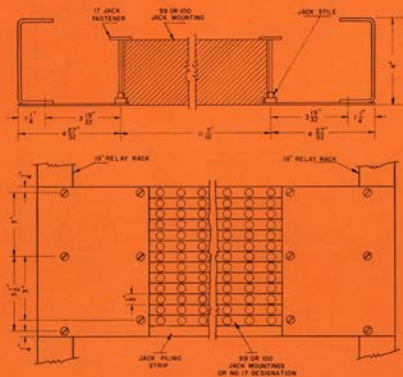
it possible to remove a single sleeve for replacement without disturbing the remaining jacks or the wiring of the strip.

Jacks that will fit these mountings are Nos. 130, 132-138 inclusive and Nos. 162, 163, 164 and 169.



Jack Mountings Used with No. 130 Type Jacks

Stock No.	Code	No. of Jacks	Length
48368-000	99	10	10 3/4"
12866-000	100	20	10 3/4"
12876-000	100A	20	10 3/4"
12877-000	100B	20	10 3/4"



No. 56-R Plug



No. 65-R Plug



No. 15 Jack Fastener



No. 17 Jack Fastener

All 99 and 100 Type Mountings are capable of being mounted on standard 19" racks, as shown in the picture at the left.

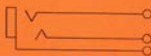
ALLIED APPARATUS

JACKS		PLUGS		CORDS		No. Cond.
Stock No.	Code	Stock No.	Code	Stock No.	Code	
48371-000	(130)	205532-000	(65R)	*209784-000	(S-3)	3
			(56R)	†212141-000	(S-2)	2
48372-000	(132)	205532-000	(65R)	*209784-000	(S-3)	3
			(56R)	†212141-000	(S-2)	2
48373-000	(133)	205532-000	(65R)	*209784-000	(S-3)	3
			(56R)	†212141-000	(S-2)	2
48367-000	(134)	205532-000	(65R)	*209784-000	(S-3)	3
			(56R)	†212141-000	(S-2)	2
48374-000	(135)	‡205541-000	(65R, 65XR)	*209784-000	(S-3)	3
			(56R, 56XR)	†212141-000	(S-2)	2
48375-000	(136)	‡205541-000	(65R, 65XR)	*209784-000	(S-3)	3
			(56R, 56XR)	†212141-000	(S-2)	2
48376-000	(137)	205532-000	(65R)	*209784-000	(S-3)	3
			(56R)	†212141-000	(S-2)	2
48377-000	(138)	205532-000	(65R)	*209784-000	(S-3)	3
			(56R)	†212141-000	(S-2)	2
48378-000	(162)	205532-000	(65R)	*209784-000	(S-3)	3
			(56R)	†212141-000	(S-2)	2
48379-000	(163)	205532-000	(65R)	*209784-000	(S-3)	3
			(56R)	†212141-000	(S-2)	2
48362-000	(164)	‡205541-000	(65R, 65XR)	*209784-000	(S-3)	3
			(56R, 56XR)	†212141-000	(S-2)	2
203852-000	(169)	205532-000	(65R)	*209784-000	(S-3)	3

*Lengths shown are 3'. Other lengths of 5', 6', or 7' are available as well as colors of white, red, green or black nylon covers.

†Lengths shown are 5'. Also available in 6' lengths. White nylon cover only.

‡Arranged on 99 Jack Mounting.



No. 130 Jack



No. 132 Jack



No. 133 Jack



No. 134 Jack



No. 135 Jack



No. 136 Jack



No. 137 Jack



No. 138 Jack



No. 162 Jack



No. 163 Jack



No. 164 Jack



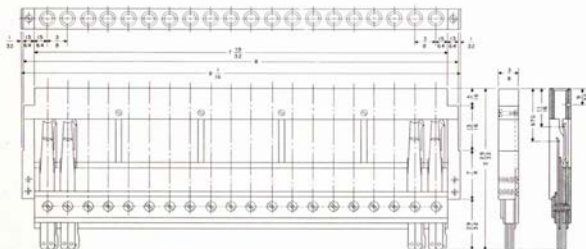
No. 168 Jack

89 and 90 Type Jack Mountings

These mountings are used for placing 127 Type Jacks in strips of 10 or 20 jacks per strip. Like the 93 and 94 Jack Mountings, these mountings are made of hard rubber and are held in place by two No. 17 Jack Fasteners. Mountings are coded 89, 90, 90-A, 90-B, and 90-C. The 89 Mounting carries ten No. 127 jacks and has a plain face. The 90, 90-A, -B, and -C Mountings

are differentiated by plain face and white line divisions indicating groups of five jacks.

Stock No.	Code	No. of Jacks	Length
801137-000	89	10	7 $\frac{1}{2}$ "
42996-000	90	20	7 $\frac{1}{2}$ "
801139-000	90A	20	7 $\frac{1}{2}$ "
801140-000	90B	20	7 $\frac{1}{2}$ "
801141-000	90C	20	7 $\frac{1}{2}$ "



ALLIED APPARATUS

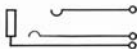
JACKS		PLUGS		CORDS		No. Cond.
Stock No.	Code	Stock No.	Code	Stock No.	Code	
801137-000	(127)	205544-000	(64-R)	†209784-000	(S-3)	3
		*205547-000	(64-DR)			
42996-000	(127)	205544-000	(64-R)	†209784-000	(S-3)	3
		*205547-000	(64-DR)			
801139-000	(127)	205544-000	(64-R)	†209784-000	(S-3)	3
		*205547-000	(64-DR)			
801140-000	(127)	205544-000	(64-R)	†209784-000	(S-3)	3
		*205547-000	(64-DR)			
801141-000	(127)	205544-000	(64-R)	†209784-000	(S-3)	3
		*205547-000	(64-DR)			

*All plugs listed are available with black, gray or red shells. The No. 64-DR Plug has a larger form on the ring spring than the No. 64-R Plug.

†Cords listed have a length of 3'. Other lengths are available in 5', 6' or 7' lengths.



End View
No. 127 Jack



No. 127 Jack
Spring Combination



No. 64-R Plug

Individual Jacks

These jacks have no specific mountings for they can mount on panels varying in thickness from $\frac{1}{8}$ " to $\frac{1}{2}$ ". A hexagonal nut, when secured onto the sleeve or ferrule which extends through the mounting, firmly holds these jacks in proper alignment.



Typical Jack—(No. 147)

JACKS		PLUGS		CORDS		No. Cond.
Stock No.	Code	Stock No.	Code	Stock No.	Code	
801183-000	(147)	801501-000	(61)	212147-000	(S-2)	2
		801500-000	(59)	*212128-000	(S-3)	3
801184-000	(148)	801501-000	(61)	212147-000	(S-2)	2
		801500-000	(59)	*212128-000	(S-3)	3
801185-000	(151)	801501-000	(61)	212147-000	(S-2)	2
		801500-000	(59)	*212128-000	(S-3)	3
801186-000	(152)	801501-000	(61)	212147-000	(S-2)	2
		801500-000	(59)	*212128-000	(S-3)	3
80072-000	(156)	205541-000	(65R)	209784-000	(S-3)	3
802597-000	(157)	205544-000	(64R)	209784-000	(S-3)	3

*Cords are 5' long with outer covering of white nylon. Lengths of 6' are available as well as colors of white, green or red nylon.



No. 59 Plug



No. 61 Plug



No. 64-R Plug



No. 65-R Plug



No. 147 Jack Spring Combination



No. 140 Jack Spring Combination



No. 153 Jack Spring Combination



Spring Combination No. 152 Jack



No. 156 and No. 157 Spring Combination

36 Point Plug and Jack

This plug and jack combination provides sufficient connections for practically all relay applications, switching applications and other applications where multiple pronged jacks and plugs are necessary. Thirty-six terminals are provided together with such features as automatic locking action between jacks and plugs and a low resistance connection between the two.

The "Lock-in" feature is accomplished without screws, thereby providing quick removal of the jack from the plug.

SPECIFICATIONS

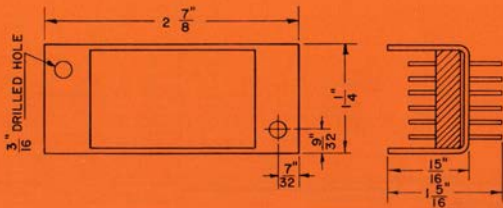
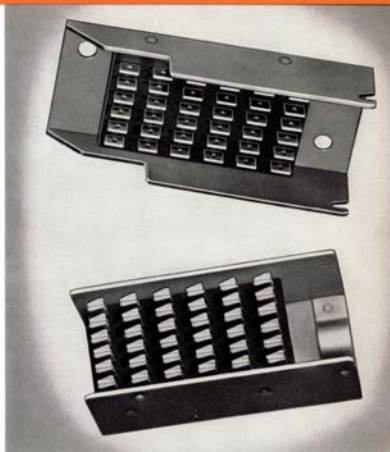
1. Breakdown voltage—500 volts RMS, per terminal, applied for $\frac{1}{2}$ second for insulation breakdown to the frame.
2. Terminals—Thirty-six.
3. Mounting—see diagram on this page.

ORDERING INFORMATION

To order a 36 Point Plug and Jack, specify:

Stock No.	Code	Description
216935-000	176	Jack Assembly
202960-000	69	Plug Assembly

Note: A 36 conductor cord may be supplied in any length if desired.



Quadruple Lamp, Jack or Key Mounting

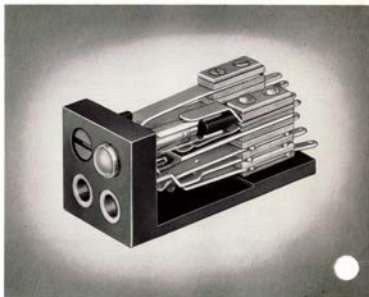
This mounting is capable of handling four jacks, twist type keys, or lamps, or any combination of these up to the number of four. Originally employed in circuit plates for telephone dial systems as a "make-busy-and-test" unit, this mounting is capable of many other uses, particularly in the electromechanical field. Sturdy, well constructed, these mountings will offer long life and trouble-free service. Contact springs are silver with silver contacts.

Jacks

Jacks used on this mounting are peculiar to this mounting only. The maximum number of spring combinations consists of one break-make and either two makes or two breaks in addition to the Tip, Ring and Sleeve springs.

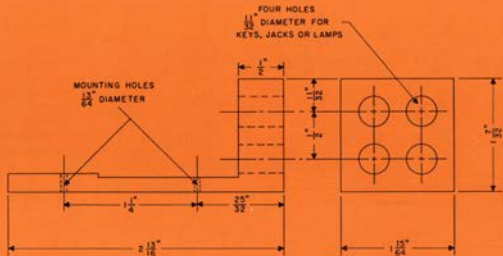
Key Switches

As in the case of jacks, key switches, either push button or twist type, have been manufactured specifically for this mounting. Maximum number of spring combinations is two break-makes and either one break and one make, two breaks, or two makes.

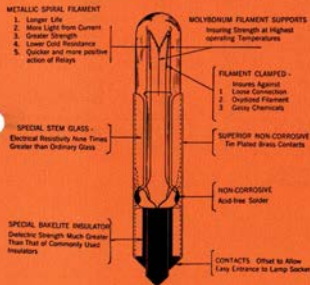
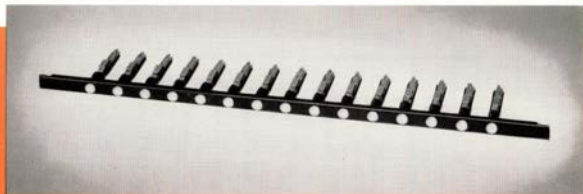


Lamps

These are the same lamps and sockets that are discussed later on in this bulletin.



Lamps



Stromberg-Carlson Telephone Switchboard Lamp

Stromberg-Carlson tipless lamps have a service record which justifies their reputation for being dependable and economical under actual operating conditions.

The over-all length is 1 $\frac{3}{8}$ " and diameter 0.300". Put up in standard packages of 100 lamps but smaller quantities may be ordered.

Important Advantages

- Tungsten filaments clamped to the lead-in wires. Filament supports of highly heat-resistant material are embedded in the stem.
- Base consists of two metal contact pieces on either side of a plastic insulator of extremely high dielectric strength.
- Long life and low current consumption is enhanced by using special stem glass 9-times more resistant to heat than ordinary glass.
- The use of acid-free solder and special plat-

ing of contacts maintains solid electrical contacts for years.

- The elapsed time between hot and cold resistance of one-fifth of a second is practically negligible.
- Operation through a maximum range of voltage with minimum fluctuation of signal value.
- The filament is mounted near the end of the bulb to obtain maximum end-on candlepower at the tip of the lamp.

LAMPS (Continued)

Ordering Data and Characteristics

Stock No.	Code	Voltage	Current		Approximate Ohms, Cold Resistance	Min. *End Foot Candle Power
			Consumption Min.	Amperes Max.		
801363-000	(4-A-2)	4	.170	.210	2.0	150
801364-000	(6-A-2)	6	.120	.160	4.5	200
801365-000	(8-A-2)	8	.080	.100	9.0	75
801366-000	(12-A-2)	12	.090	.110	12	110
801367-000	(16-A-2)	16	.090	.110	16	130
801368-000	(18-A-2)	18	.035	.050	46	150
801369-000	(24-B-2)	24	.035	.050	61	200
801370-000	(24-C-2)	24	.060	.085	33	750
209569-000	(24-H-2)	24	.018	.033	135	75
801371-000	(30-B-2)	30	.090	.110	30	500
801372-000	(44-A-2)	44	.060	.085	61	650
801374-000	(48-B-2)	48	.090	.110	48	360
42201-000	(48-C-2)	48	.032	.038	160	200
201737-000	(48-D-2)	48	.012	.021	410	30
801375-000	(55-C-2)	55	.045	.055	109	500
45271-000	(60-A-2)	60	.045	.055	120	500

*E.F.C. is the candle power at a distance of one foot from the tip of the lamp.
24 volt lamps may be used on voltage 18-28; 44 volt lamps on voltage 36-48.

Lamp Caps

Stromberg-Carlson Lamp Caps are built to combine neatness with durability — the lenses are made of specially annealed glass to resist breakage from impact with plugs, and are mounted in bushings made from seamless metal tubing which is later spun over to retain the lenses — other end of shank is slotted for close fitting in lamp socket.

No. 23 Type



No. 23

A lamp cap, designed for use with the No. 9 individual Lamp Socket, is equipped with an attractive sand blasted lens. Maximum diameter of face— $\frac{3}{8}$ ". Diameter of shank is 0.811", fits $\frac{3}{16}$ " hole.

Stock No.	Code	Color	Glass Description
801388-000	(23-A)	White	Translucent
801389-000	(23-B)	Red	Translucent
801390-000	(23-C)	Green	Translucent
801391-000	(23-D)	Amber	Translucent
207824-000	(23-E)	Red	Translucent
207825-000	(23-F)	Clear	Transparent
207826-000	(23-G)	Red	Translucent
207827-000	(23-H)	Clear	Transparent
209428-000	(23-J)	Red	Translucent

No. 27 Type

A Lamp Cap associated with miscellaneous circuits where caps are not required to be numbered. Designed for use with the No. 121 Lamp Socket on Nos. 79, 80, 81 or 82 Mounting. This lamp cap is equipped with a non-breakable



No. 27

opal. Maximum diameter of face— $\frac{3}{8}$ ". Diameter of shank—0.340", fits $\frac{3}{16}$ " hole.

Stock No.	Code	Color	Glass Description
801392-000	(27-A)	White	Cloudy
801393-000	(27-B)	Red	Clear
801394-000	(27-C)	Green	Clear
801395-000	(27-D)	Transparent	Clear
801396-000	(27-E)	White	Cloudy, Red when lighted

No. 29 Line Type



No. 29 Line

Associated with lamp sockets that have 20 lamps on one mounting. Designed for use with the No. 121 Lamp Socket on No. 83 Mounting only. Equipped with a non-breakable lens. The No. 29-A is provided with removable number disc which is held in place by an invisible ring. Disc numbered as specified. Maximum diameter of face— $\frac{3}{8}$ ". Diameter of shank—0.320", fits a $\frac{3}{16}$ " hole.

Stock No.	Code	Color	Glass Description
801400-000	(29-A)	Transparent	Clear, number disc
801401-000	(29-B)	Red	Clear
801402-000	(29-C)	Green	Clear
801403-000	(29-D)	White	Cloudy
801404-000	(29-E)	White	Cloudy with e Symbol
801405-000	(29-F)	White	Cloudy with e Symbol
801406-000	(29-G)	White	Cloudy with e Symbol

LAMP CAPS (Continued)

No. 30 Line Type



No. 30 Line

A lamp cap designed for use with the No. 121 Lamp Socket on Nos. 79, 80, 81, 82 or 89 Mountings. Equipped with a non-breakable lens. Nos. 30-A and 30-L are provided with a removable paper number disc which is held in place by an invisible ring. Disc numbered as specified. Diameter of face— $\frac{3}{8}$ ". Diameter of shank—0.340", fits a $\frac{1}{16}$ " hole.



No. 30-D No. 30-J No. 30-K
Lamp Caps



No. 30 Line Type, Mounted and
associated with line jacks

Stock No.	Code	Color	Glass Description
801407-000	(30-A)	Transparent	Clear, number disc
801408-000	(30-D)	White	Cloudy
801409-000	(30-J)	White	Cloudy with \odot Symbol
801410-000	(30-K)	White	Cloudy with \odot Symbol
801411-000	(30-L)	Transparent	Flat lens with number disc

No. 31 Type



No. 31

Standard lamp cap designed for use with the No. 13 Lamp Socket only. Equipped with a non-breakable lens. Maximum diameter of face— $\frac{11}{16}$ ". Diameter of shank—0.343", fits $\frac{1}{16}$ " hole.

Stock No.	Code	Color	Glass Description
801412-000	(31-A)	White	Translucent
801413-000	(31-B)	Red	Translucent
801414-000	(31-C)	Green	Translucent
207177-000	(31-D)	Clear	Transparent

Lamp Sockets

Stromberg-Carlson Lamp Sockets are furnished in two types: those for mounting individually and those for mounting in strips. Both of these types are provided with all metal frames so as to readily distribute and radiate the heat generated by the lamps. Every Stromberg-Carlson Lamp Socket takes a standard lamp and lamp cap.

Lamp Sockets which are mounted in strips align with jacks having the same type of mounting.

Mounting screws, fasteners, lamps and lamp caps are not included with the lamp sockets, but should be ordered separately.

Individual Lamp Sockets



No. 9 Lamp Sockets

This lamp socket is arranged for a large lamp cap used with standard lamps and the No. 23 Lamp Cap. Mounts on the face of any standard panel with two No. 6176 Wood Screws. Consists of steel frame with brass head for lamp cap; equipped with insulating fibre tubing and nickel-silver springs. *Length over-all—2 $\frac{3}{4}$ "*. *Diameter of head— $\frac{1}{4}$ "*. *Diameter of sleeve— $\frac{3}{16}$ "*.

Stock No.	Code	Used With
801417-000	(9)	Lamp Socket No. 23 Lamp Cap

No. 13 Type



No. 13 Lamp Socket

Consists of a steel frame with a fibre tubing, for insulating purposes, and nickel-silver springs. Mounts from the under surface of any standard $\frac{7}{8}$ " panel with one No. 4 x $\frac{1}{2}$ " R.H.L.W. Screw. Takes standard lamp and the No. 31 Lamp Cap. *Over-all length, including springs—2 $\frac{7}{8}$ "*. *Diameter of sleeve— $\frac{1}{2}$ "*. *Mounting lug— $\frac{3}{16}$ " from face*.

Stock No.	Code	Used With
801421-000	(13)	Lamp Socket No. 31 Lamp Cap

LAMP SOCKETS (Continued)

Face Strip Type

No. 121 Lamp Sockets with mountings 59, 60, 61 and 67 mounts a lamp and No. 30 Individual Lamp Cap. Consists of face plate, mounting extensions, and sleeve sockets—all made of steel with black enamel finish. Equipped with nickel-silver springs. Sleeve socket insulated from springs with black tubular sheet fibre.

Length of face—10 $\frac{3}{4}$ ". Over-all length—11 $\frac{3}{4}$ ". Width of face— $\frac{1}{2}$ ". Mounting Centers—10 $\frac{3}{4}$ ". Face Length—7 $\frac{3}{4}$ ". Jack Fasteners—No. 15.

Stock No.	Code	Mtg.	No. of Sockets	Description
801431-000	(121)	L.S. on	10	Plain face
		60 Mtg.		
801432-000	(121)	L.S. on	20	Plain face
		61 Mtg.		

No. 121 Lamp Socket is used in connection with the No. 130 Type Jacks and mounts the same. Mounts lamp and No. 27 or No. 30 Individual Lamp Cap. Consists of a face plate, lugs, and sleeve sockets all made of steel with black enamel finish. Equipped with nickel-silver springs. Sockets insulated from springs with black tubular sheet fibre.

Length of face—10 $\frac{3}{4}$ ". Over-all length—10 $\frac{3}{4}$ ". Width of face— $\frac{1}{2}$ ". Mounting Centers—11 $\frac{3}{4}$ ". Jack Fasteners—No. 17.

Stock No.	Code	Mtg.	No. of Sockets	Description
801424-000	(121)	99	10	Plain Face
801425-000	(121)	100	20	Plain Face

No. 121 Eight Panel Lamp Socket, used in connection with No. 127 Type Jacks. Mounts lamp and the No. 30 Individual Lamp Cap. Similar to the No. 80 Mounting only shorter.

Length of face—7 $\frac{3}{4}$ ". Over-all length—5 $\frac{3}{4}$ ". Width of face— $\frac{1}{2}$ ". Mounting Centers—8 $\frac{3}{4}$ ". Jack Fasteners—No. 17.

Stock No.	Code	Mtg.	No. of Sockets	Lamp Caps No. 30
801429-000	(121)	89	10	

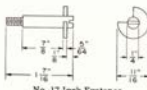
No. 121 Eight Panel Lamp Socket may be used in connection with the No. 127 Type Jack. Mounts lamp and the No. 29 Individual Lamp Cap. Consists of black molded face strip with satin finish on face, sheet steel frame for mounting the springs, and the two end lugs. Equipped with nickel-silver springs.

Length of face—7 $\frac{3}{4}$ ". Over-all length—7 $\frac{3}{4}$ ". Width of face— $\frac{1}{2}$ ". Mounting Centers—8 $\frac{3}{4}$ ". Jack Fasteners—No. 17.

Stock No.	Code	Mtg.	No. of Sockets	Description
801440-000	(121) Lamp Socket Strip	91	10	Plain face
801427-000	(121) Lamp Socket Strip	83	20	Plain face
801439-000	(121) Lamp Socket Strip	92	20	Takes No. 26 Designa- tion Strip



No. 15 Jack Fastener



No. 17 Jack Fastener

Designation Strips



No. 2 Type



No. 2 Designation Strip

These Designation Strips are used principally in connection with jacks. They consist of a maple mounting block and a metal card holder with cellulose acetate protector.

Stock No. Code
800708-000 (2)

Dimensions
Face Length—10 1/2"
Width—1/2"
Mounting Centers —
10 3/4"
Jack Fasteners—
No. 15

No. 5 Type



No. 5 Designation Strip

Designation Strips of this type have metal card holders and acetate protectors. Mount with two .373" screws.

		Dimensions		Finish
Stock No.	Code	Length	Width	
800710-000 (5)	Specify	1/2"	1/2"	Pol. Nickel
800730-000 (24)	Specify	1/2"	1/2"	BLK. Japan
33764-000		10 3/4"	.373"	Brass

†Dull black finishes will be provided when necessary.

No. 14 Type

A type of Designation Strip consisting of a maple mounting block with a designation card, and an acetate protector—both held in place by three nickel-plated screws. Mounted with No. 17 Jack Fasteners.



No. 14 Designation Strip

Stock No.	Code	Used With	Dimensions
800715-000 (14)	127 Jack		Face Length—7 1/2" Width—3/8" Mounting Centers — 8 3/8"
800717-000 (16)	130 Jack		Face Length—10 1/8" Width—1/2" Mounting Centers — 11 1/4"

No. 15 Type



No. 15 Designation Strip

These Designation Strips consist of a dull black finished metal holder and celluloid protector, mounted on maple mounting block. Requires No. 17 Jack Fasteners.

Stock No.	Code	Used With	Dimensions
800716-000 (15)	127 Jack		Face Length—7 1/2" Width—3/8" Mounting Centers — 8 3/8"
800718-000 (17)	130 Jack		Face Length—10 1/8" Width—1/2" Mounting Centers — 11 1/4"
800731-000 (25)	127 Jack		Face Length—7 1/2" Width—1/2" Mounting Centers — 8 3/8"
481367-000 (34)	93-A 94-A	Jack Mounting	Face Length—16 1/4" Width—1/2" Mounting Centers — 17 1/4"



STROMBERG-CARLSON COMPANY

A DIVISION OF GENERAL DYNAMICS CORPORATION

INDUSTRIAL SALES—TELECOMMUNICATION

100 Carlson Road • Rochester 3, New York