

COIN TELEPHONE SETS GENERAL REQUIREMENTS

This index lists the information that forms a part of, or supplements this specification, and indicates the authorized issues thereof.

[illegible]

c—Information in accordance with that currently authorized.

WESTERN FILING INFORMATION:

File in Handbook:
RS-193 Bk-1 Tab F
IP-3 Tab E

1. GENERAL

- 1.01 This specification covers general requirements applicable to the recovery and repair of Coin Telephone Sets. Each requirements shall be applied to all products of such design as to be affected by that requirement unless otherwise specified in the individual BSRS.
- 1.02 Specification covering individual products will refer to this specification and will include such additional requirements as may apply to the individual unit.
- 1.02A The applicable requirements of the specification listed on the Index as SUPL SPECS shall be followed in the repair of Coin Telephone Sets, in addition to the requirements listed herein.

Requirements Needing Special Consideration by the Telephone Company

- 1.03 This specification includes certain requirements which need special consideration and, in some cases, action on the part of the telephone company. The paragraph numbers and a brief description of these requirements are shown in the following table:

| <u>Paragraph Number</u> | <u>Requirement</u> |
|-------------------------|------------------------------|
| 2.04 | Refinishing |
| 2.07 | Chrome-Plated Parts |
| 2.14 | Handsets |
| 2.21 | Initial Rate Setting |
| 3.03 | Special Marking Instructions |

- 1.04 Requirements listed herein that are specified for Coin Telephone Sets shall be applied to all Single Slot Coin Telephone Sets.

2. MECHANICAL

2.01 The interior of all Coin Telephone Sets and components shall be "cleaned" with particular attention given to foreign matter, e.g., grease, loose dirt, metal particles on moveable parts, magnetic surfaces, insulating materials, coin passages, and contacts.

2.02 Cleaning agents used shall be "noncorrosive and nonfilmforming" and shall not be permitted to enter coil windings or soak in- to insulating materials. Parts shall be free of residue of cleaning agents.

2.03 All surfaces of Coin Telephone Sets and components shall be free of corrosion, i.e., formation of salts or loose rust. Tarnish or other surface discolorations are permissible.

Exterior Finishing

2.04 Surfaces exhibiting only dirt or minor stains may be refurb- ished by cleaning thoroughly first with RS-16352 detergent solution (mixed ten quarts of water to 1-2 ounces detergent) and spray or brush, followed by rinsing with hot water and wiping dry.

2.04A Surfaces having minor scratches, areas of loose coatings, or severe staining may be repaired by overspraying with Polane-T. Sets shall be finished as follows:

- 1) Surfaces that exhibit small areas of loose coating, nicks, cuts or scratches shall be sanded to remove old finish in those areas and to feather areas around the missing coating.
- 2) Prime bare areas with a minimum 0.0003" thickness of #638 Wash Primer.
- 3) Apply Polane T finish in appropriate color. Air dry or bake as required.

2.05 Sets or parts exhibiting damaged spots larger than the area covered by a fifty-cent piece should be stripped and completely refinished. Suspected loose coating may be tested by probing suspect areas with an orange stick. Sets shall be refinished as follows:

- 1) Strip and rinse
- 2) Prime entire surface with a minimum 0.0003" thickness of #638 wash primer.
- 3) Apply Polane T finish in appropriate color. Air dry or bake as required.

2. MECHANICAL (Cont'd)

2.06 Faceplate and coin return assembly characters shall be clear, legible, and properly filled in accordance with the following table:

| Type | 1 Type Coin Tel | All Panel Sets |
|------------------|--------------------|----------------|
| Color Characters | Gray or Black | Black |

* "Push" characters on the coin return door shall be black filled unless the red filling is in satisfactory condition.

2.07 When requested by the telephone company, painted locks, apparatus blanks, card holder, and plastic pull buckets shall be replaced with chrome-plated parts.

2.08 Chrome-plated locks, faceplates, and sliding surface (e.g., between lock bolt and bracket assembly on 1A1) shall be free of finishing materials.

General

2.09 All interior components shall be capable of assembly without undue effort. All fastening devices shall not be distorted in any way that may impair performance of their intended function.

2.10 The mating or separation of the two primary assemblies shall be possible without undue effort. In the case of panel sets, the doors shall swing clear in a free and normal manner.

2.11 The housing assembly shall permit the normal assembly operation of the coin receptacle, coin receptacle cover and door.

Locking Mechanisms and Panel Door

2.12 KS-19589, List 2, Lubricant shall be present on all bearing surfaces of locking mechanism assembly (1 Type) and door hinges (panel sets).

2.13 With the cover assembly unit mounted on (or when the door and faceplate assembly is seated against) the housing and mounting plate assembly, the locking mechanism shall lock and unlock when a torque of maximum 45 pound inches moving is applied to a 719A Tool engaged in the link and bracket assembly.

2.13A With the locking mechanism fully operated with the cover unit assembly on the housing or for door assemblies with the door closed, the 29-Type Lock shall operate with a 3.5 pound inch torque maximum applied to the 29-Type Key.

2.13B With the 30C type lock mounted in a telephone set in its normal operating position the following requirements shall apply:

1. The keys associated with any individual lock, when fully inserted, shall operate the lock in either direction.
2. A random snag or catch during operation of the lock is permissible provided the lock operates successfully ten times in succession. If a snag is encountered before ten successive operations are achieved, the lock may be reset and the test sequence started again. Three snags occurring before ten successive operations are achieved shall constitute lock failure.

2. MECHANICAL (Cont'd)

2.13B Continued -

NOTE: The key may be operated in the lock several times in both directions prior to making the above test (2.13B2). It is permissible to take the side play in the most favorable direction, except the agitation of the key is not permissible.

Handset

2.14 Coin telephone sets and coin cover units shall be equipped with a G3AH-52 handset or, when a moisture-proof transmitter is required, a G3AK-52 Handset.

When requested by the telephone company for flame retardant purposes the G3AH and G3AK handsets may be replaced by the G3AHF and G3AKF handset respectively.

Dial Housing Assembly

2.15 If the rotary dial must be removed for any reason, dial housings not having a blind hole or recessed area behind the dial governor shaft shall be drilled as shown in B0659992.

2.15A The shaft bearing surfaces of all switchhook plungers, (with the exception of the 60B/61B Type Units), shall be lubricated with a small amount of KS-19589, L2 lubricant.

Hopper Assembly

2.16 The 811557172 Hopper Coin Assembly shall be left assembled in the Coin Telephone. When a Coin Telephone is repaired according to this specification and BSRS-361.704 a new P-10E688 trap shall be installed and a trap pin having a curved loop shall be used.

2.17 The trap, trap lever, and vane shall move freely throughout their entire travel. There shall be maximum clearance of 0.040 inch between the vane and the front hopper bearing boss with the play taken up to produce maximum clearance.

2.19 The trap lever shall be equipped with Trap Lever Spring 840157333. Where present, the P-10E702 Phosphur Bronze Spring shall be removed.

Coin Relay

2.19A All P-10E786, P-13E961 and P-15E687, 1A, and 1A* Relays shall have P-23F773 Restoral Springs.

Coin Relay Test

2.19A The coin relay shall meet the requirements of BSRS-457.229.

NOTE: The coin Relay shall be removed from the hopper to facilitate making tests which may be difficult or impractical to make with the relay installed.

Dust Covers

2.20 Open cracks may be present in dust covers provided they are 1/16 inch or less in width. Holes of 1/8-inch or less in diameter are permissible.

Initial Rate Setting

2.21 Unless otherwise specified by the telephone company, Coin Telephone Sets shall be set for an initial rate of 10 cents.

Insulation Breakdown

2.22 All 1A/2A, 1C/2C and 1E Type Coin Telephone Sets and their components shall meet insulation breakdown test of 500 volts ac between current carrying and noncurrent carrying parts in accordance with specification X-17986 or X-38.

2.22A All 1D/2D Type Coin Telephone Sets and their components shall meet insulation breakdown test of 1000 Volts ac between current and non-current carrying parts in accordance with specification X-17986.

NOTE: At no time during the above test should the transient voltage exceed the peak level of the breakdown voltage.

Security Precautions

2.23 Coin Telephone Sets shall not be reissued containing unauthorized holes.

Ringers

2.24 Ringers when recovered as part of an assembled coin telephone or part of a coin chassis unit shall meet all requirements of the applicable Supl. Specs. with the following exceptions:

- (a) Testing shall be in high volume only.
- (b) Testing shall be with the biasing spring in high tension notch only.

All Coin Telephones shall be shipped with the ringer in the high volume position only.

3. MARKING AND PACKING

- 3.01 The repair symbol "R" and the date of repair shall be present on repaired Coin Telephone Sets and their associated components where specified. Either an ink stamp or a printed adhesive label may be used. If a label is used lettering shall be 1/8" minimum and the repair symbol "R" may be omitted. Location of the label shall be governed by the same procedures that apply when ink stamping is utilized. The manufacturing date shall not be removed nor obscured by repair marking.
- 3.02 A pad of E-4914 Forms shall be packed with each repaired Coin Telephone Set.
- 3.03 The telephone company shall provide special marking information, when necessary, to indicate the presence of features not characteristic of the code.
- 3.04 Omitted on Issue 3 of this page.
- 3.05 The repair symbol and date of repair shall be present on repaired single coil relays.
- 3.06 The P-15E687 Coin Relays that have been modified to meet requirements of Paragraph 2.19A shall have the "1A*" code Marking located on the upper right side of the armature. Modified P-13E961 and P-10E786 Relays shall have the marking, "P-13E961*" and "P-10E786*," respectively, on the upper right side of the armature.
- 3.07 Coin Relays P-10E786 and P-13E961, that have been modified according to Paragraph 2.19A, shall be marked with "41 MA OP" on the upper left side of the armature to indicate they have been adjusted to that current. "41MA OP" is not to be marked on the 1A* Relay.
- 3.07A A coin relay that has been converted from a P-13E961 Relay to a 1A* Relay is to be marked, "1A*C."
- 3.08 Existing marking on the lower-front side of the core is to be marked thru if it does not agree with the repaired relay code; the existing marking is not to be marked thru if it agrees with the repaired relay code.

4. SIDETONE, TRANSMISSION AND RECEIVING

- 4.01 Transmission, reception and sidetone requirements specified in BSRS-350.003 shall be met by the assembled Coin Telephone Set.

BSRS 350-004

10 $\frac{1}{4}$

ENGR AJB
 DRAWN
 ISSUE 1 6-15-60

REASON FOR REISSUE:
 TO IDENTIFY TRAP LEVER
 TAB, ILLUSTRATE AND
 SPECIFY A BENDING OF
 THE TRAP LEVER SPRING
 AFTER ASSEMBLY TO TRAP
 LEVER. Title was: Loca-
 tion of Trap Lever Tab.

FRL COK
 Issue 2 7-11-62

Reference to trap lever
 tab limit lines removed

FRL COK
 Issue 3 8-13-62

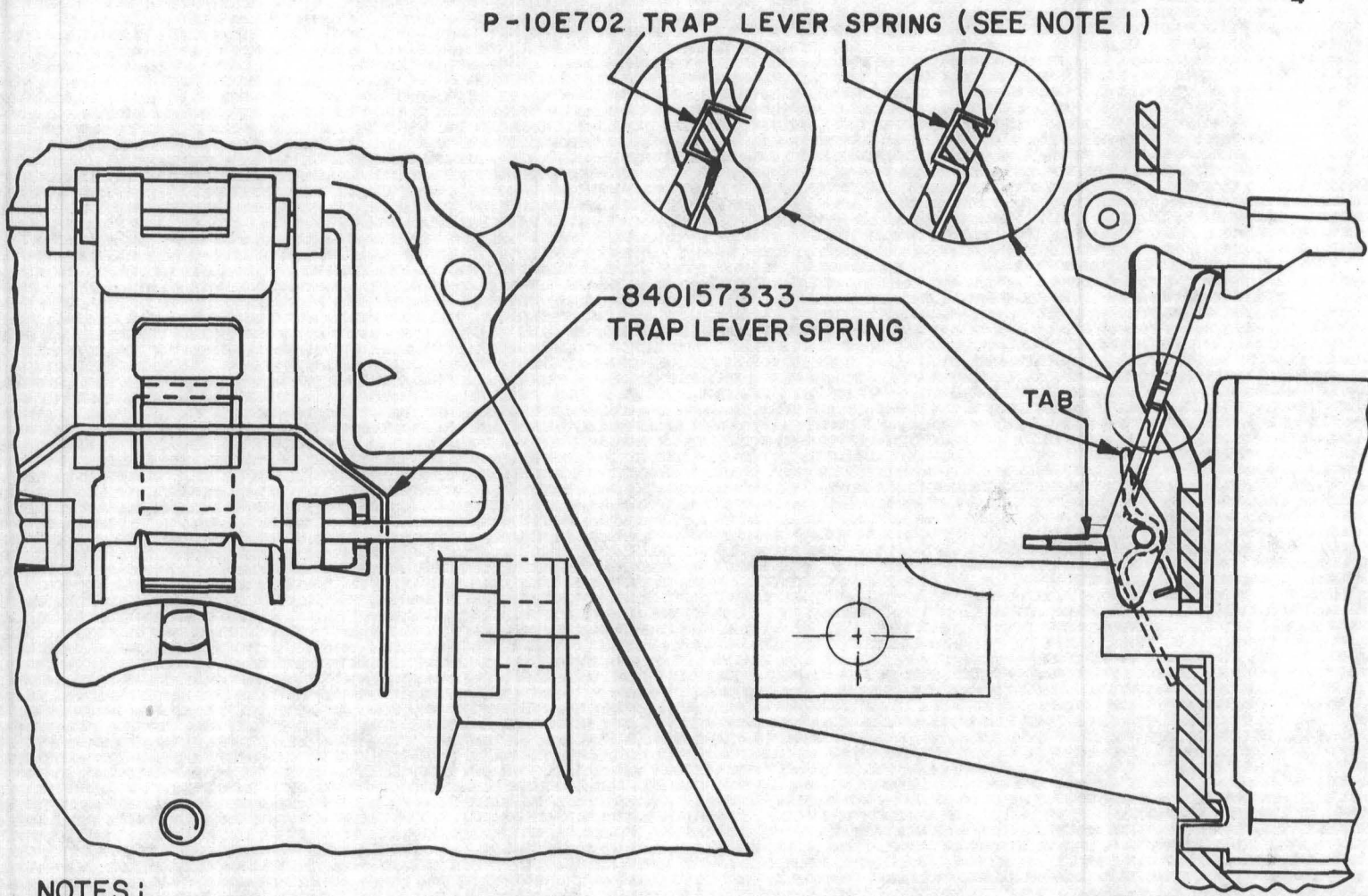
TRAP LEVER SPRING
 VIEWS CLARIFIED

FRL COK
 Issue 4 3-1-67

ISSUE NOTES CONT AT RIGHT

USED ON DWG

NO. OF SHEETS PER SET SEE SHEET 1
 CDS
 B942835
 SHEET
 SCALE
 TRAP LEVER
 ASSEMBLY
 WESTERN ELECTRIC COMPANY, INC.
 ENGINEER OF MANUFACTURE
 BELL TELEPHONE LABORATORIES
 INCORPORATED

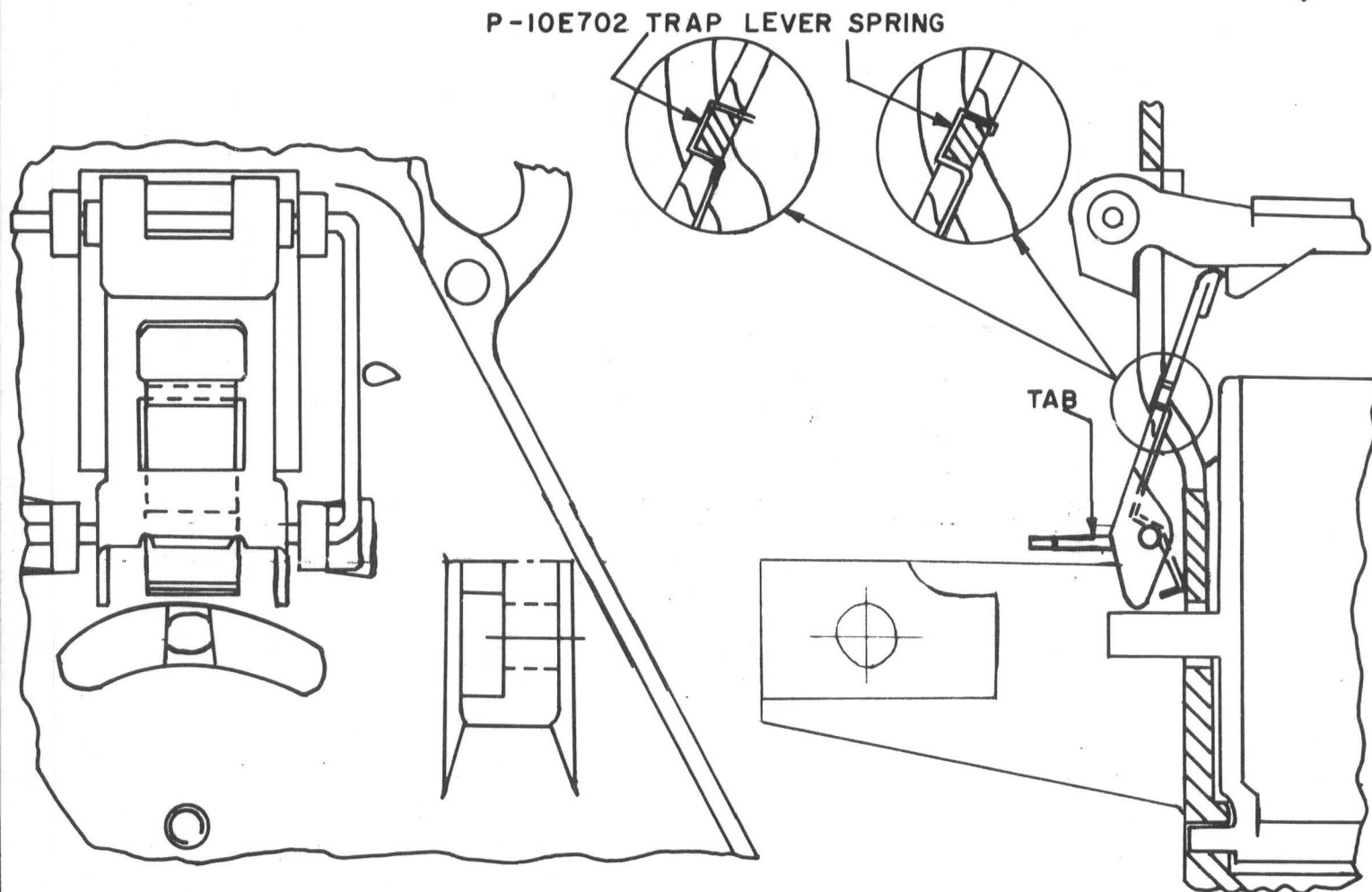


NOTES:

- IF P-10E702 IS PRESENT, IT NEED NOT BE REPLACED.

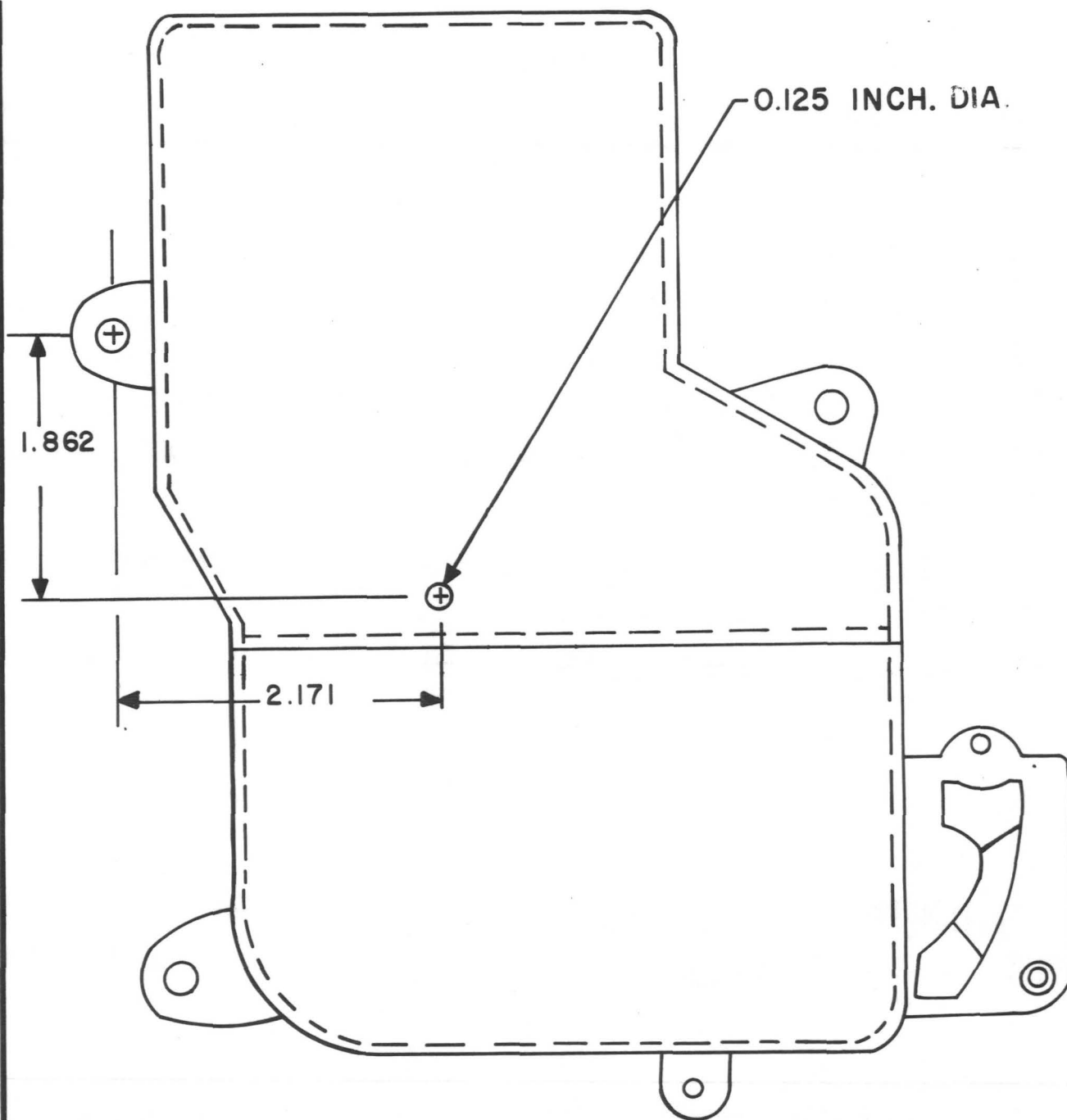
CHANGED: PICT TO AGREE
 WITH P-15E717, ISSUE 8
 PER 437779-BIC
 FJR
 ISSUE 5 4-12-76

| | | |
|---|-------------|-------|
| ENGR | AJB | |
| DRAWN | | |
| ISSUE / | 6-15-60 | |
| REASON FOR REISSUE: TO IDENTIFY TRAP LEVER TAB, ILLUSTRATE AND SPECIFY A BENDING OF THE TRAP LEVER SPRING AFTER ASSEMBLY TO TRAP LEVER. Title was: Loca- tion of Trap Lever Tab. | | |
| FRL | COK | |
| Issue 2 | 7-11-62 | |
| Reference to trap lever tab limit lines removed | | |
| FRL | COK | |
| Issue 3 | 8-13-62 | |
| TRAP LEVER SPRING VIEWS CLARIFIED | | |
| FRL | COK | |
| Issue 4 | 3-1-67 | |
| | | |
| | | |
| USED ON | | DWG |
| TRAP LEVER ASSEMBLY SCALE WESTERN ELECTRIC COMPANY, INC. ENGINEER OF MANUFACTURE BELL TELEPHONE LABORATORIES INCORPORATED | | |
| NO. OF SHEETS PER SET | SEE SHEET 1 | |
| SDS | B942835 | SHEET |



10 $\frac{1}{4}$

7 $\frac{1}{8}$



| | | | | | | | |
|---------|--|----------------------------------|--|--------------------------------|--|-----------------------------|--|
| DRAWN | | ISSUE 1 | | DWG | | MODIFICATION - DIAL HOUSING | |
| 7-1-66 | | DEPTH & DIAMETER OF HOLE CHANGED | | P-15E390 | | SCALE | |
| F.R.L. | | ISSUE 2 | | WESTERN ELECTRIC COMPANY, INC. | | ENGINEER OF MANUFACTURE | |
| 12-1-66 | | CLARITY HOLE DIMENSION | | BELL TELEPHONE LABORATORIES | | INCORPORATED | |
| F.R.L. | | ISSUE 3 | | USED ON | | B-659992 | |
| 3-1-67 | | | | SDS | | SHEET 1 | |