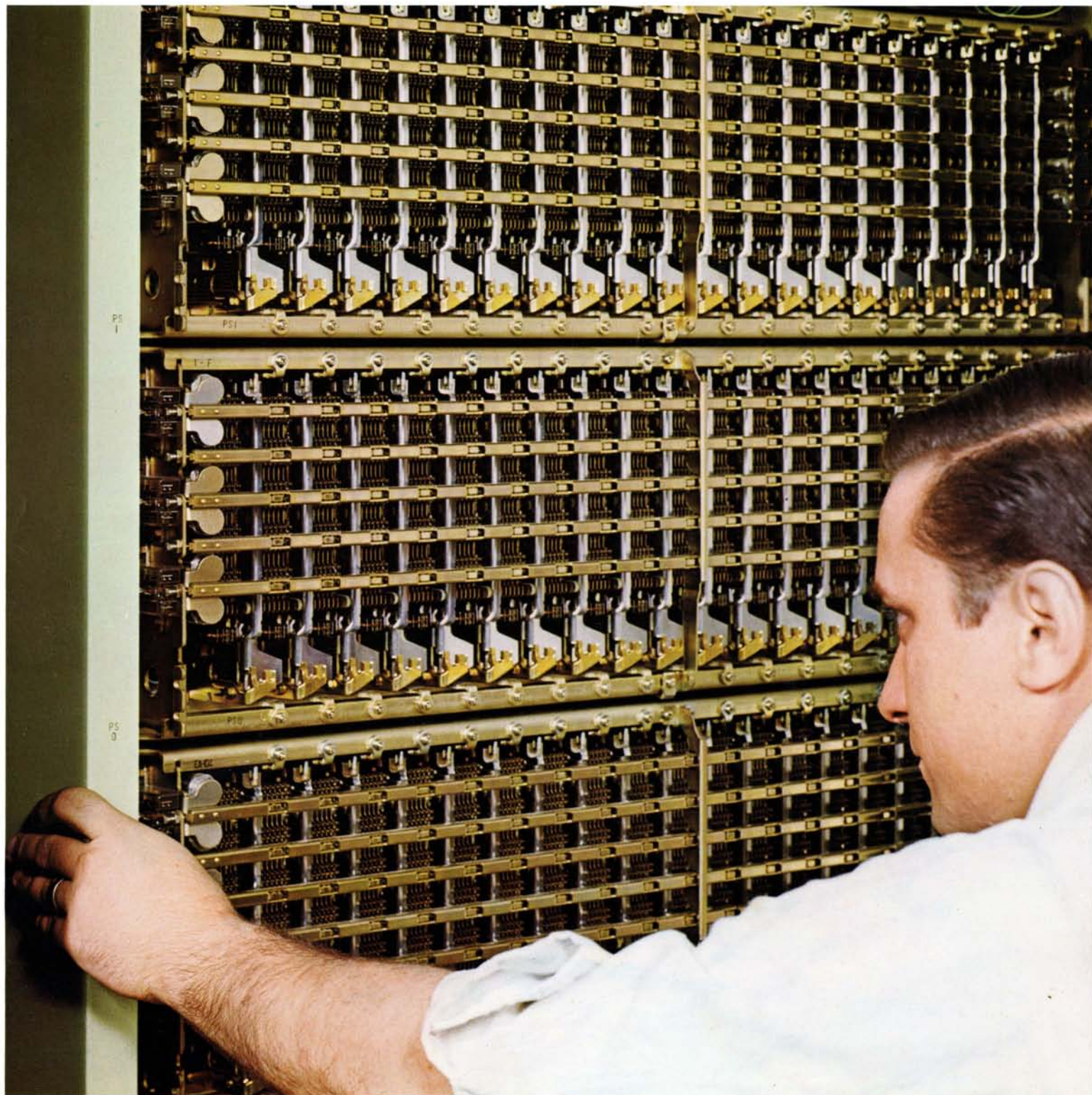


GTX-400™ PABX



a 100-to-600 line common control system featuring

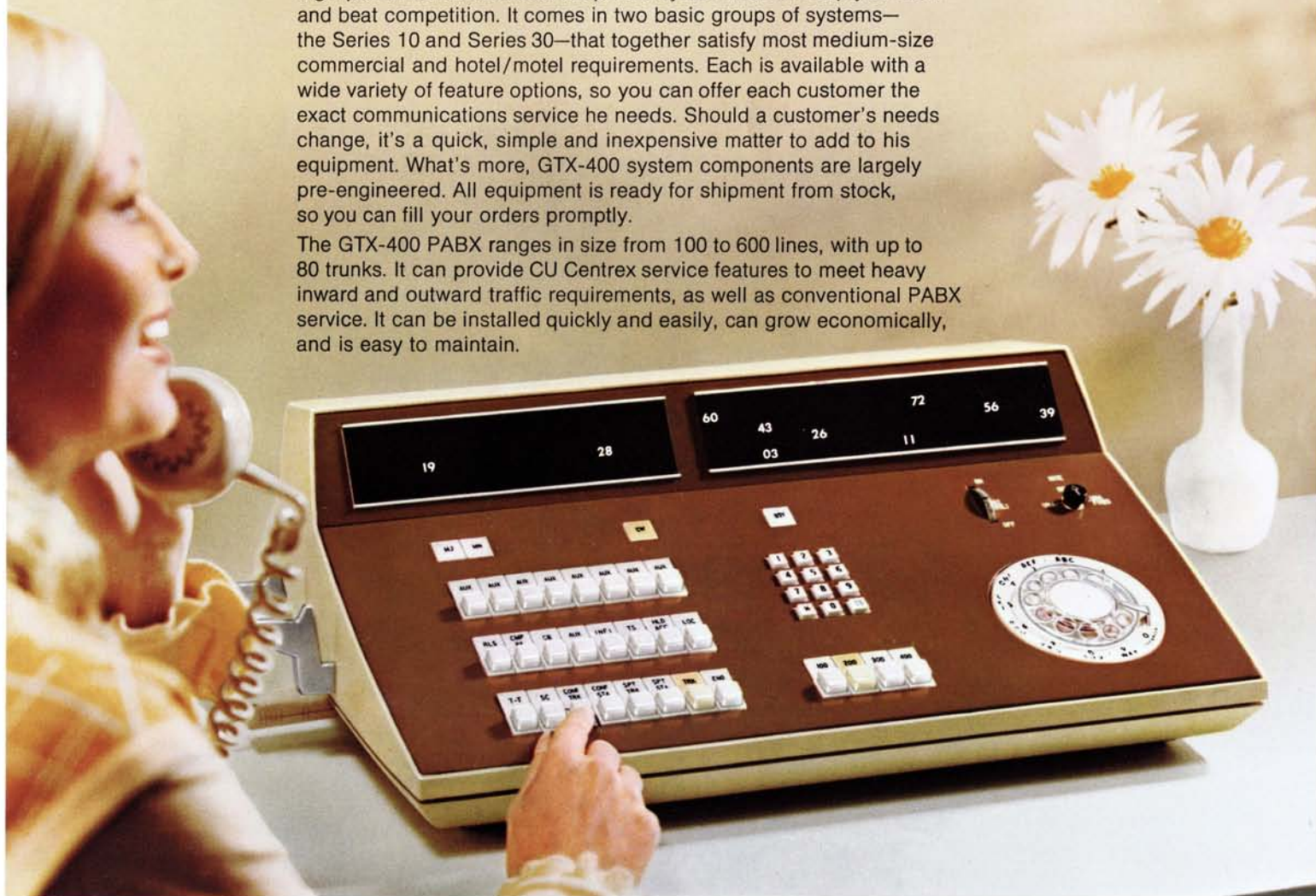
- *tailored communications*
- *crossbar operation*
- *economical plug-in design*

GTE AUTOMATIC ELECTRIC

Tailored communications for every customer ...right off the shelf

The GTX-400 PABX is a modern, economical, highly expandible, high-performance business telephone system that will help you meet and beat competition. It comes in two basic groups of systems—the Series 10 and Series 30—that together satisfy most medium-size commercial and hotel/motel requirements. Each is available with a wide variety of feature options, so you can offer each customer the exact communications service he needs. Should a customer's needs change, it's a quick, simple and inexpensive matter to add to his equipment. What's more, GTX-400 system components are largely pre-engineered. All equipment is ready for shipment from stock, so you can fill your orders promptly.

The GTX-400 PABX ranges in size from 100 to 600 lines, with up to 80 trunks. It can provide CU Centrex service features to meet heavy inward and outward traffic requirements, as well as conventional PABX service. It can be installed quickly and easily, can grow economically, and is easy to maintain.



Modern, efficient attendant's turret

This turret combines attractive design with ease of operation—both important points to your customers.

The attendant uses a rotary dial to make outgoing calls and to provide various auxiliary services. A pushbutton keyset is used to extend incoming calls. Calls appear on the turret one at a time—the control center is never jammed with calls and flashing lights. Each call remains on the turret for only a few moments, until the desired party is reached.

The turret is equipped with a trunk status field that indicates held and "camped-on" calls. A line busy lamp field is optional.

Dimensions: Approximately 22" wide, 7.5" high, 15" deep.

Economical, reliable crossbar switchgear

The GTX-400 PABX is a modern common control system employing crossbar switches, wire-spring relays and reed relays. This equipment is extremely economical. It provides reliable operation throughout a long service life, and it requires little maintenance.

- **Minimum equipment cost.**

The GTX-400 crossbar PABX is one of the most economical systems of its type on the market today in all sizes . . . 100 to 600 lines.

Pre-engineering is one reason why the GTX-400 PABX has a low price tag. Most of the engineering paperwork has already been done. When you order a GTX-400 PABX, we just put on the finishing touches and ship the equipment you need from stock. When you order a GTX-400 PABX, you pay less, put it in service fast and start making money sooner.

- **Reliable operation.**

The reliability of the crossbar switch has been proved in hundreds of central office and PABX installations. Little maintenance is necessary . . . an occasional adjustment is all that's usually required.

GTX-400 operation is controlled by dependable wire-spring relays. In critical circuits such as the marker, these relays have double contacts for added reliability. They also have double-wound coils. Should one become defective, the other acts as a back-up.

The GTX-400 PABX will operate dependably over a wide range of environmental conditions. Equipment room temperature can vary from 32 to 110 degrees Fahrenheit; humidity can vary up to 90%.

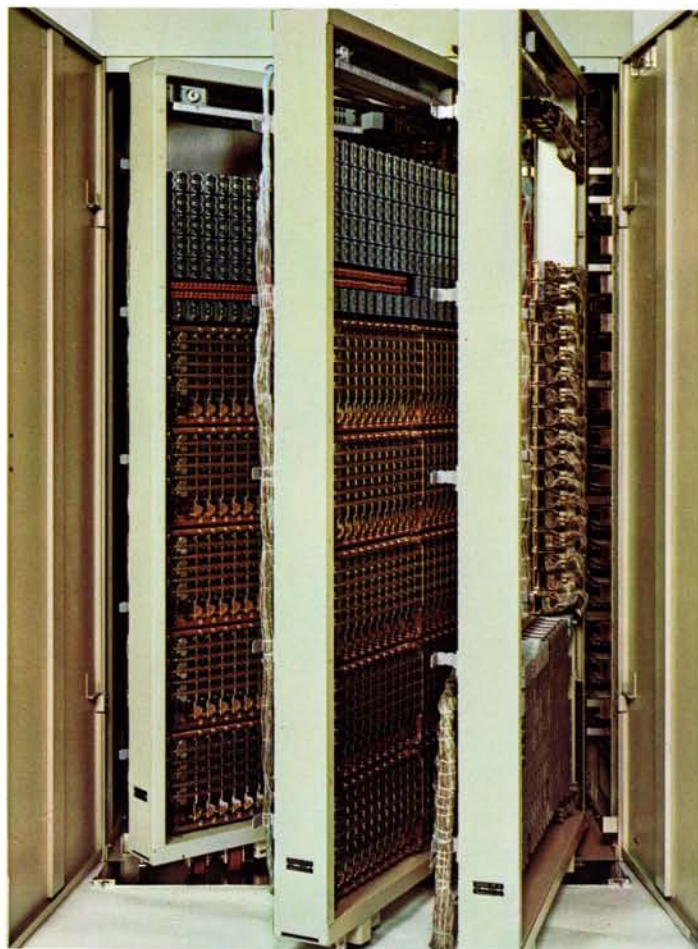
Plug-in design keeps your costs down.

The standard GTX-400 PABX makes extensive use of plug-ended terminations throughout. This saves you both time and money in installation and expansion costs.

- *Most Systems Can Be Installed Quickly and Inexpensively.* Since all GTX-400 standard features *simply* plug in . . . some optional features do require installer wiring . . . installation time, cost and wiring errors are minimized.

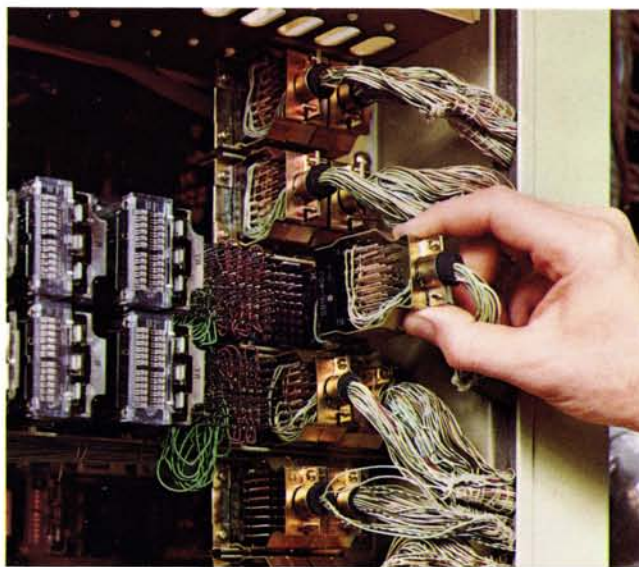
In addition, frame-to-frame and cabinet-to-cabinet connecting cables are plug-ended. And Amphenol plug connectors connect the GTX-400 switching equipment to the MDF and the turret.

- *Growth is handled easily by simply plugging in more equipment.* The GTX-400 PABX can grow up to 600 lines, in 100-line increments, on a plug-in basis. (A 50-line addition to the 100-line size Series 10 systems is also available.) Additional trunks plug in, too. And should a customer's service requirements change, it's a simple matter to add or remove equipment.



- **Compact.**

A complete 100-line GTX-400 PABX, with associated trunks, will fit in a cabinet measuring 6'7" x 4'8" x 1'11", and occupying only 9 square feet of floor space. (Larger installations normally require two or three cabinets.) Installations are compact—an important consideration for space-conscious customers. Cabinets may be installed against a wall so they're out of the way. Equipment is mounted on roll-out racks, for ease of maintenance. Hinged doors lift off, and side panels are detachable. Floor loading is 85 pounds per square foot, distributed weight.



Here's how to give each customer the exact system he needs

The chart below shows you the many standard and optional features available with the GTX-400 PABX. You'll notice that we offer two basic groups of systems, Series 10 and Series 30:

Series 10 systems are intended for hotel/motel and lesser-sophisticated commercial applications. All systems in this series have attendant-controlled transfer.

Series 30 systems are intended for more sophisticated commercial applications. All systems in this series have station-controlled transfer. Direct Inward Dialing (DID) is also available.

All systems can be equipped with up to 80 trunks and with 100 to 600 lines, in 100-line increments. Series 10 systems can also be equipped with 150 lines.

Features of GTX-400 PABX	Series 10		Series 30		Features of GTX-400 PABX	Series 10		Series 30	
	Commercial	Hotel/Motel	Commercial	Com'l with DID		Commercial	Hotel/Motel	Commercial	Com'l with DID
Direct Inward Dialing	No	No	No	Yes	Extendible Information Trunks	Yes	Yes	Yes	Yes
Touch Calling	Opt.	Opt.	Opt.	Opt.	Non-Extendible Information Trunks	Opt.	Opt.	Opt.	Opt.
Attendant Turret	Yes	Yes	Yes	Yes	Dictation Link	Opt.	Opt.	Opt.	Opt.
Attendant Recall	Yes	Yes	Yes	Yes	Station Hunting	Opt.	Opt.	Opt.	Opt.
Attendant Camp-On	No	No	Yes	Yes	Power Failure Transfer	Opt.	Opt.	Opt.	Opt.
Attendant Break-In	No	No	Yes	Yes	Line Busy Lamp Field	Opt.	Opt.	Opt.	Opt.
Two-Way Splitting	Yes	Yes	Yes	Yes	Trunk-to-Trunk Connections by the Attendant	No	No	Opt.	Opt.
Direct Outward Dialing	Yes	Yes	Yes	Yes	Call Forwarding	Opt.	Opt.	Opt.	Opt.
Five Classes of Service	Yes	Yes	Yes	Yes	Code Calling	Opt.	Opt.	Opt.	Opt.
Universal Night Answer	Opt.	Opt.	Opt.	Opt.	Executive Over-Ride	Opt.	Opt.	Opt.	Opt.
Line Lockout	Yes	Yes	Yes	Yes	Automatic Attendant Recall for Series Calling	No	No	Opt.	Opt.
Station Transfer, Consult. & Add-On Conference	No	No	Yes	Yes	Hotel/Motel Features				
Reset Call (not available with Touch Calling)	Yes	Yes	Yes	Yes	Message Waiting	No	Opt.	No	No
Immediate Ring on Intra-Office Calls	Yes	Yes	Yes	Yes	Message Metering	No	Opt.	No	No
Trunk Discrete Ring	Yes	Yes	Yes	Yes	Room-to-Room Blocking	No	Opt.	No	No
Toll Denial	Yes	Yes	Yes	Yes	Long Distance Trunks	No	Opt.	No	No
Tie Trunks	Opt.	Opt.	Opt.	Opt.	Unoccupied Room Restrictions	No	Opt.	No	No
Paging Access	Opt.	Opt.	Opt.	Opt.	Common Battery	Opt.	Opt.	Opt.	Opt.
Toll Denial & Diversion	Opt.	Opt.	Opt.	Opt.	Single Digit Dialing	No	Opt.	No	No
Station Meet-Me Conference	Opt.	Opt.	Opt.	Opt.	Room Number Translation	No	Opt.	No	No
Attendant Add-On Conference	No	No	Opt.	Opt.					

SPECIFICATIONS

Traffic Capacity: Up to 7.2 ccs @ P=.02 or better.

Working Voltage: DC—48+5v, —4v.

Dial Characteristics: Speed, 10±2pps; Break Ratio 60±10%.

Loop Limits: 1000 ohms including telephone; minimum leakage of 20k ohms; central office loop up to 2200 ohms.

GTX-400 PABX equipment is manufactured by Hitachi, Ltd., in Japan to GTE Automatic Electric specifications and distributed by GTE Automatic Electric.

GTE AUTOMATIC ELECTRIC
NORTHLAKE, ILLINOIS 60164