

Connecticut

31b
5

Signal  Systems

automatic telephone equipment

The Connecticut Automatic Telephone System consists of a central automatic switchboard and power unit and a number of cradle type dial telephones for either desk or wall mounting.

The automatic switchboard is of the rotary switch type, made up in 25, 50, 75 and 100 line sizes. It is fully automatic and can be furnished with as many conversational links as may be required.

Standard features include Dial Tone, Automatic Busy Signal, Automatic Ringing and Executive Right of Way. Other special features are optional. By a unique circuit arrangement the usual number of moving parts has been materially reduced. This feature permits a more compact unit, reduces the number of operating parts and simplifies maintenance.

The system requires two wires from each station and operates on 48 volts d-c. This is supplied by a built-in power unit which is connected to the commercial power supply. All central automatic switching apparatus is mounted in a dust-proof steel cabinet.

No. 1270-W Desk Type Cradlephone is of modern design, molded of black phenolic resin with handset of the same material. The lift grip behind the cradle provides a convenient means of moving the instrument about. All operating parts, such as induction coil, ringer, condenser and terminal connections, are assembled to inserts which are molded in the base. The mounting screws, which fasten these parts to the base, make the electrical connections. Hence these parts can be replaced without the use of a soldering iron. The handset is equipped with an improved capsule type receiver and "all position" transmitter.

No. 1086-A Dial is exceptionally quiet and smooth running. Dialing requires only extremely light finger pressure although the power spring has considerable reserve energy. Pulsing speed is controlled by means of a governor. The Dial is mounted by means of three screws and is interchangeable with other standard dials.

No. 1290-W Wall Type Cradlephone is similar in construction to the cradlephone in that the same base and handset are used for both instruments. For ease of installation and inspection of parts, the front is removable.



No. 1270-W



No. 1086-A



No. 1290-W

CONNECTICUT TELEPHONE & ELECTRIC
DIVISION OF GREAT AMERICAN INDUSTRIES, INC.

MERIDEN



CONN.

INTERCOMMUNICATING TELEPHONE SYSTEMS

COMMON-TALKING, SELECTIVE-RINGING SYSTEM NO. 6-B

For Small Offices, Stores, Factories, Banks, Clubs, Residences, Tourist Camps

The systems described on this page are designed for small installations of from four to twenty phones. No operator is required. Each phone can selectively call all other phones on the system. Phones described are but a few of the many styles available.

System No. 6-B is a selective-ringing, common-talking system. Conversations are limited to one at a time.

No. 6008W Cradlephone is molded of black phenolic resin with handset of same material. A lift grip behind cradle provides a convenient means of moving. The handset provides exceptional clarity and is not affected by the position in which it is held. Up to twelve push buttons are arranged in dial formation. Buzzer is concealed in base of phone; a six-foot cable is attached to metal terminal box.

No. 6250W Flush Type Wall Handphone is equipped with our standard light weight "all position" handset. Beveled front plate is of heavy gauge brass with individual card holders beside each button. Double coil buzzer and line terminals are assembled to back board and are protected by steel outlet box. Standard finish, satin black with nickel trim.



No. 6008-W

No. 6250-W



SELECTIVE-TALKING, SELECTIVE-RINGING DIAL-O-PHONE SYSTEM

For Offices, Factories, Stores, Banks, Theaters, Institutions

The Dial-O-Phone System provides the simplest, lowest cost private-talking phone system where as many as twenty-five phones are required. Each phone is equipped with a dial selector and ringing button. The number of simultaneous private conversations is not limited. The dial mechanism consists of only one moving part, a rotary type switch.

Operation: To call, remove receiver or handset, turn dial to station wanted and press ringing button. It is not necessary to return the dial to "home" or "off" position. When calling a busy station, the characteristic ringing symbol is absent and interference is locked out.

No. 1200W Cradle-Dial-O-Phone takes the same base and handset described above for the No. 6008W. The dial mechanism is a compact unit with dial lettering etched in to prevent blurring from long use. A six-foot flexible cable connects to a flush or surface type terminal box. Machine screw terminals are mounted on a formica base and marked for identification.

No. 1240W Surface Handset Dial-O-Phone has a steel hinged cabinet, opening to permit easy access to line terminals and all operating parts. Equipped with our standard "all position" handset and non-adjustable double-coil buzzer. Back plate drilled for mounting on single-gang box or cover. Standard finish, satin black with nickel trim.



No. 1200-W

No. 1240-W



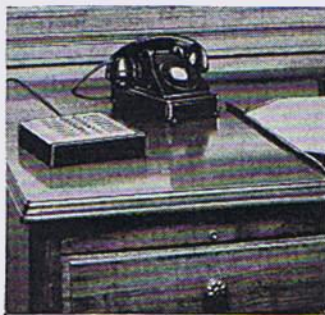
COMMON-TALKING CENTERPHONE SYSTEM NO. 12A-O

For Offices, Industrial Plants, Banks, Schools, Theaters, Stores, Hospitals, Tourist Camps

This system has a Centerphone which can selectively call and talk to each outlying station. All outlying stations ring only the Centerphone, but can talk to any other phone through the Centerphone. The talking circuit is common, limiting conversations to one at a time.

No. 2000W Desk Type Cradlephone has our molded base with "all position" handset, concealed buzzer and a separate button pad and directory No. 2200W. Button pads are suggested when the number of phones on the system exceed the button capacity of the Cradlephone. Slide-in name cards beside each button have celluloid protectors. A six-foot flexible cable connects to a metal terminal box.

No. 676W-1 Flush Type Handset furnished with beveled brass plate behind which is mounted the buzzer, switch and all line terminals. The molded handset is attached by a five-foot cord and hangs in a cup receptacle. Fits 2-gang box. Standard finish, satin black.



No. 2000-W with Button Pad
No. 2200-W

No. 676-W-1

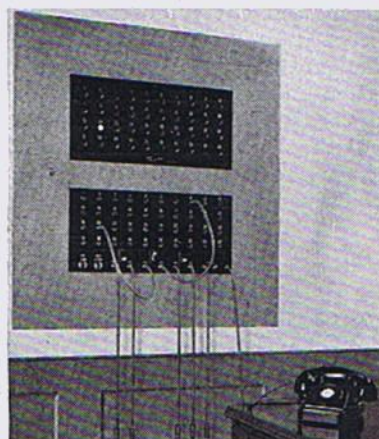


COMMON-TALKING, SELECTIVE-RINGING MASTER ANNUNCIATOR SYSTEM NO. 19-O



For Grade and High Schools, Colleges, Dormitories, Institutions, Clubs

No. 19-O Centerphone System has, in addition to masterphone and push button directory, an annunciator to indicate all calls. Especially adapted to the requirements of larger schools and colleges where most of the calls are between classrooms and main office. The annunciator serves to indicate and register calls made to the Centerphone during the absence of the person in charge. On large installations it is recommended that the call buttons be assembled in a flush wall panel or in the annunciator cabinet. Our general catalog describes in detail the various types and styles of equipment for the Centerphone, annunciators and outlying stations.



PRIVATE-TALKING, SELECTIVE-RINGING ANNUNCIATOR SWITCHBOARD SYSTEM NO. 30-O

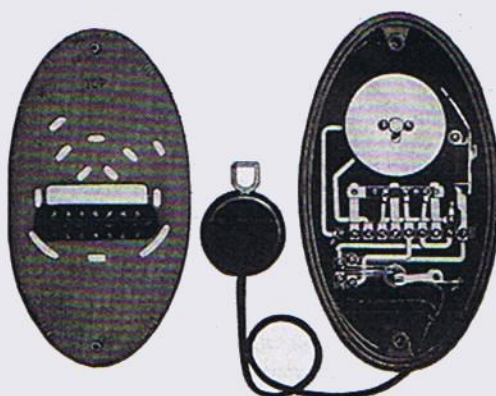
For Dormitories, Y.M.C.A.'s, Schools, Clubs, Apartment and Summer Hotels

This system affords the same type of service as a private switchboard system, except that it allows for the occasional absence of the operator by the fact that the annunciator registers, by target drops, all calls from outlying phones. The Annunciator-Switchboard may be equipped with as many cross-connecting cords as desired to permit non-interfering communication between outlying phones.

Operation: To call an outlying station, the central operator inserts cord plug into the numbered jack of the desired station on the Annunciator-Switchboard and throws the ring-and-listen key first to ringing, then to listening position. Upon completion of call, the cord plug

is removed, the key returned to neutral and the target drop reset. To call the operator from an outlying phone, remove the receiver and press the ringing button on the phone. This sounds the bell or buzzer in the Annunciator-Switchboard and drops the visual target of the phone calling. The operator inserts cord plug into corresponding jack and throws associated key to listening position. If communication with another outlying station is desired, the operator inserts the associated cord of the pair used in answering the incoming call into the jack of the station wanted and throws key to ringing position, then back to listening position. When station answers, the key may be returned to neutral position. [Also complete line of Lamp Type Switchboards.]

CONNECTAPHONE



Back Plate

600W-3, Rear View

SIMPLIFIED SERVICING

Although the construction of Connectaphone makes it practically trouble-proof, interruption of service can be altogether eliminated by keeping an extra phone unit on hand. If one of the phones in the system should require repairing, it can be quickly replaced with the spare unit, thus restoring service without loss of time. The exchange of phones requires only the removal and re-fastening of the two holding screws at top and bottom.

The No. 600W Connectaphone, recommended as the ideal phone for many of our systems or as a replacement phone on other systems. In appearance, the Connectaphone is decorative—elliptical in shape, harmonizing with either modern or conventional interiors. Furnished in brown, black and ivory bakelite, with 1, 2 or 3 buttons.

Two-piece construction makes it ideal for any type of wall installation. Metal back plate is designed to be mounted either on surface or over any standard type of outlet box. All incoming line connections are made to brass machine-screw terminals on front of back plate. This permits complete installation, wiring and testing of the system during construction or renovating without danger of damaging or marring phone units. *Phone need not be installed until after all plastering and decorating is finished.* Phone unit simply plugs into back plate, all connections being made through knife-blade and spring contacts of two units. All phones are equipped with seven terminals. This permits wiring for, or changing over to, any type of circuit desired. All terminals are plainly identified. Note that all internal connections are made with pre-formed, rigid bus bars instead of wires. This eliminates necessity of soldered connections and possibility of shorts or grounds.

The Connectaphone is dust-proof. Housing of phone unit is a rugged, one-piece Bakelite molding, shoulder of which fits snugly over metal back-plate. Gong serves also as a shield for transmitter so that no dust can reach operating parts through mouthpiece openings. Transmitter itself, which is of the efficient carbon-granule type, is completely sealed. Watch-case receiver is of finest quality. It is housed in a metal case with molded screw-on ear piece. Receiver cord connections at both ends are concealed. Cord ends are equipped with U-clips which are fastened under brass machine-screw terminals. Receiver can also be used as an auxiliary signal when transformer current is used for ringing. Hook-switch is so arranged that if receiver is left off hook, talking circuit is cut off, thus preventing any drain on batteries or power supply.



APARTMENT HOUSE TELEPHONE EQUIPMENT

In selecting a telephone system for a new apartment house, it is not enough to provide "some" means of communication between vestibule and apartments on the reasoning that the property could not command satisfactory rentals without it. To insure maximum income from the property over the longest period, a complete, dependable, modern intercommunicating system is the most profitable. There are three general types of systems available, Common-Talking, Sectional-Talking and Selective-Talking.

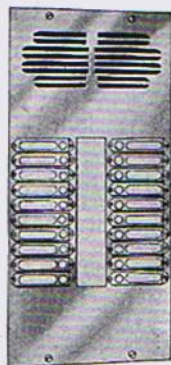
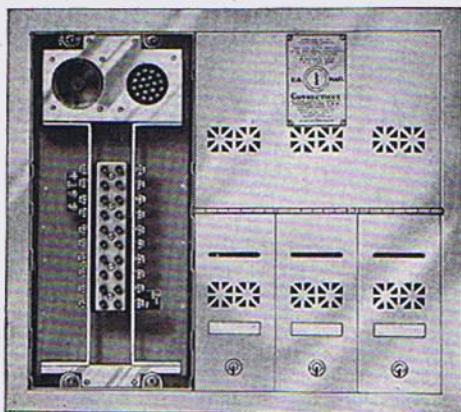
Common-Talking System: For buildings having a single entrance with vestibule and all apartment phones connected to a common-

talking circuit. Vestibule calls all apartments; apartments have Door Opener button.

Sectional-Talking System: For buildings having two or more entrances, or a group of buildings having common janitor service. Each vestibule and its associated apartment phones are connected to common-talking circuit. Simultaneous conversations may be carried on in each vestibule without interference. Janitor can communicate with all apartments and vestibules. Apartments have Door Opener and Janitor button.

Selective-Talking System: For large installations where non-interfering service is desired between apartments and a central station switchboard. This is usually operated by an attendant or door-man for announcing callers. Intercommunication between apartments optional. Removing receiver from hook signals the switchboard.

GOVERNMENT-APPROVED MAIL BOXES AND TELEPHONES

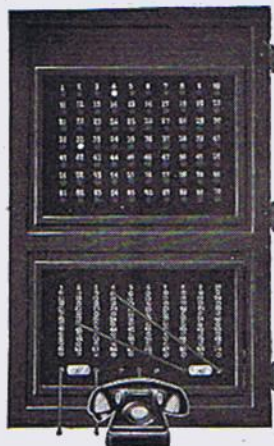


No. 3163A Mail Box combined with No. 86W Cordless Phone

For apartments of three or more families, government-approved mail boxes are required. These must be large enough to take mail 14 1/4 in. long. Special locks are supplied by the local Post Office for the master door for which the carrier only has a key.

CONNECTICUT vestibule phones are built into the same frame with mail boxes, presenting a neat, compact surface and simplifying installation. Can be furnished with the Armoured Cord Receiver, Swing Arm Combination Transmitter and Receiver, or with the Cordless Type of transmission. Mail boxes are made up in gangs of from three or twelve, permitting any group arrangement in single or double row mounting. Illustrated at left is No. 3163A Mail Box combined with No. 86W Cordless Phone.

SELECTIVE-TALKING MASTER ANNUNCIATORS & SWITCHBOARDS



No. 600-W-1

At Left:
No. 7500-W

On large apartment houses and many of the smaller ones, where janitor service is furnished, an annunciator is usually installed in the janitor's apartment, connected to all suites and entrances. These can be furnished in sizes and styles to meet every requirement.

No. 7500W Annunciator consists of a target type drop panel and a jack panel with indicator in gold on black background. Operator's transmitter and receiver will be mounted on the cabinet or a cradlephone supplied. A call from suite or vestibule is indicated by the buzzer sounding and a white target showing. The target remains visible until electrically reset, thus giving the janitor a complete record of all calls made in his absence.

In Superintendent's Office, and where an attendant or door-man is located in the lobby, a lamp type switchboard with provision for intercommunication is recommended.

No. 600W Connectaphone is described in detail on the preceding page. While especially designed for apartment house systems, it is recommended for any system where the number of buttons required does not exceed three.

BRANCH OFFICES

Atlanta, Ga.
Boston, Mass.
Buffalo, N. Y.
Chicago, Ill.
Clearwater, Fla.
Cleveland, Ohio
Denver, Colo.
Detroit, Mich.

El Paso, Tex.
Hartford, Conn.
Houston, Tex.
Indianapolis, Ind.
Jackson, Miss.

Kansas City, Mo.
Los Angeles, Cal.
Minneapolis, Minn.
New York, N. Y.
Omaha, Neb.

Philadelphia, Pa.
Pittsburgh, Pa.
Richmond, Va.
San Francisco, Cal.
Seattle, Wash.
St. Louis, Mo.
Washington, D. C.

CONNECTICUT TELEPHONE & ELECTRIC
DIVISION OF GREAT AMERICAN INDUSTRIES, INC.

