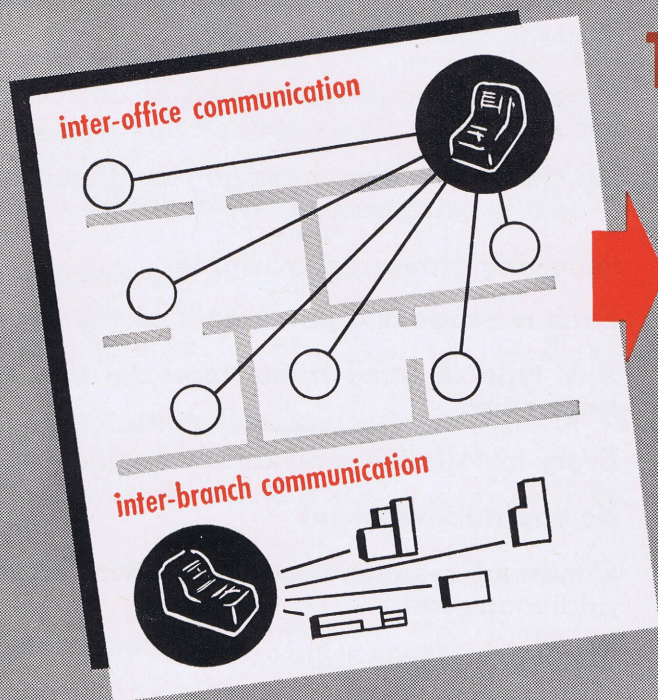




# *TelAutograph*

## TELESCRIBER SYSTEMS



*handwritten messages  
deliver themselves  
while you write!*



# TelAutograph

## TELESCRIBER SYSTEMS

The TelAutograph telescriber is an instrument designed to transmit handwritten communications from one point to another. The telescribers are operated electrically and are connected by wire. Before any operator writes, he selects the department or group of departments he wishes to reach by pressing the proper selector key; permitting numerous locations to be contacted at the same time by one transmitter. Grouping of stations is highly flexible. One station to be contacted can be ten feet away—another one hundred feet away—and still another ten miles away. Yet all can receive the message at the same moment.

### CONSULTATION

As every TelAutograph Telescriber System is individually designed and constructed to meet the specific requirements of the subscriber, it is the policy of TelAutograph Corporation to have specialists available for consultation. Analyses of every potential system are made and recommendations are presented without charge. Naturally, no accurate estimate of the cost of a Telescriber System can be made by anyone except a TelAutograph Corporation representative.

### MAINTENANCE AND SERVICE

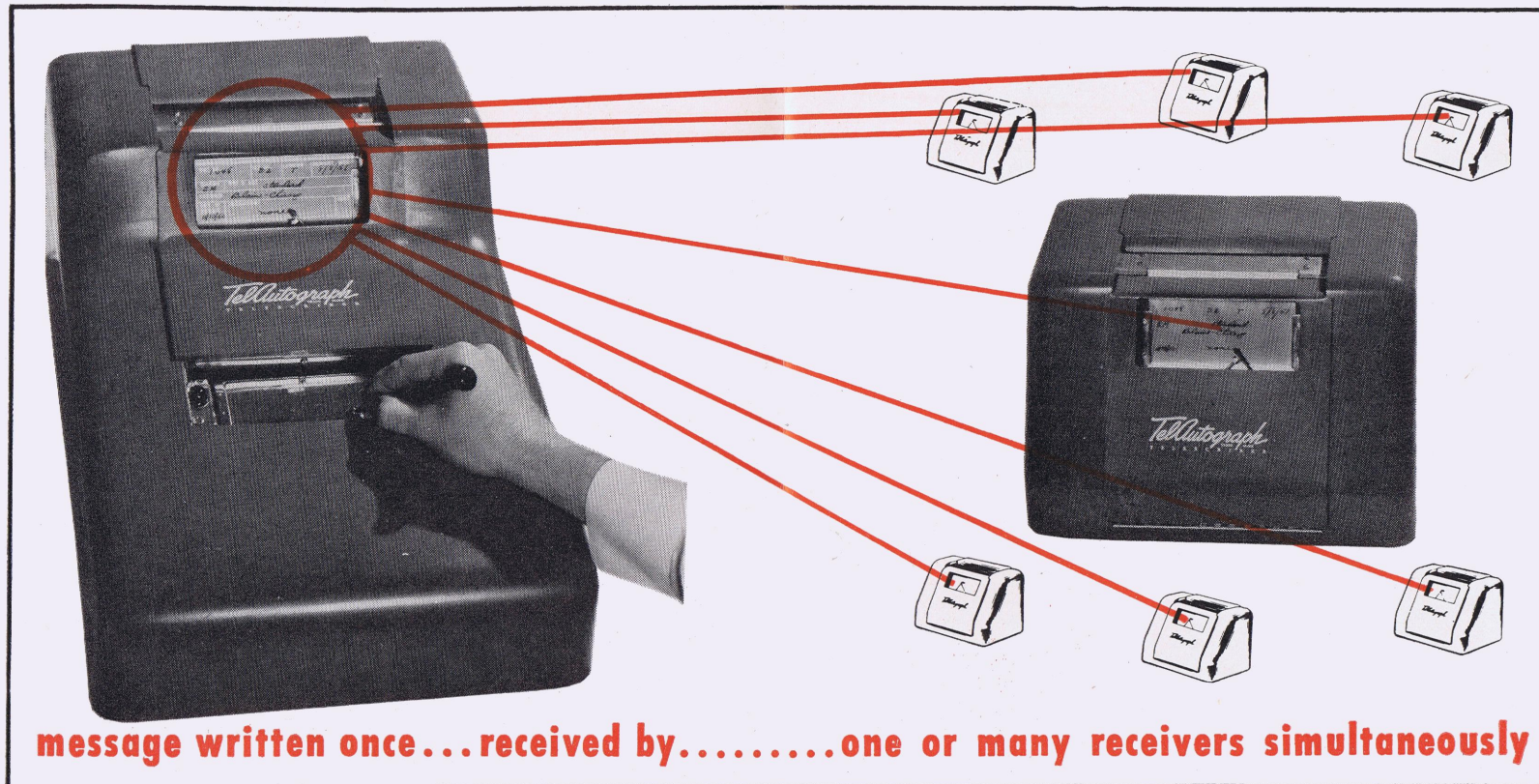
Telescriber Systems are installed on a monthly service charge basis. This method eliminates the burden of high equipment costs for the user. Also, it enables TelAutograph Corporation to have the maintenance and service staff constantly available—even beyond regularly scheduled visits of inspection. This service, including the replacement of any worn parts, is without extra expense to the subscriber. See list of branches on page 4.

### INSTALLATION

Telescriber Systems are easily installed. TelAutograph Corporation engineers furnish the subscriber's electrician with wiring specifications plus detailed blueprints covering installation and connection. Connection to the completed wiring and final adjustment of the system are carried out by TelAutograph Corporation's maintenance and service staff.

### DETAILED DATA

Details of the telescribers are shown on page four. Information on Models "A" and "B" is available by writing to the New York office.



### ADVANTAGES

- Speedy—accurate
- Write to one or many points
- Original message reproduced at all receiving stations
- All stations receive message simultaneously—as it is being written
- Receiving groups are variable
- Each message is a permanent record
- Any type of handwritten message can be transmitted
- Every installation individually engineered
- No capital investment
- Continual maintenance and service at no additional cost
- Easily, quickly installed
- No specially trained personnel needed

### APPLICATIONS

- Banks, Credit Bureaus, etc.....VII
- Hotels and Clubs.....I, II, VIII
- Hospitals and Sanitariums....I, V, VII, VIII
- Retail Establishments.....I, III, VII
- Wholesale Establishments.....I, III, VII
- Public Utilities.....I, II, VII
- Transportation Companies.....II, VI
- Service Establishments.....I, II, III
- Publishers and Printers.....I, II
- Government.....VI, VII
- Manufacturers.....II, III, IV

# TelAutograph

## TELESCRIBER SYSTEMS

### BASIC PROCEDURES

in which applications are found

#### I SALES ORDER

- Credit Authorizations
- Connect and Disconnect Notices
- Counter Service
- Changes and Departures
- Diet Orders
- Dining Room Service
- Drawbacks
- Floor Clerks and Linen Closets
- General Service (Hotels, Hospitals)
- Order Changes (Last Minute News)
- Loading Weight Check
- Messenger Dispatching
- Room OK's
- Order Filling
- Shipping (Warehouse Withdrawals)
- Steamtable and Pantry Service

#### II PRODUCTION CONTROL

- Order Changes
- Coach Orders (Railroads)
- Maintenance and Repairs
- Machine Loading
- Production Control (Follow-up, Expediting)
- Power Control
- Program Scheduling (Radio)
- Production Scheduling and Dispatching
- Rollers, Shears, Pits, Scales

#### III MATERIAL CONTROL

- Inventory Control
- Loading Weight Check
- Expediting
- Purchasing
- Receiving and Stores
- Requisitioning
- Reserve Stock
- Tool Control

#### IV QUALITY CONTROL

- Banbury Process
- Blast Furnace
- Open Hearth, Bessemer and Electric Furnaces
- Laboratory Analysis
- Testing and Inspection (Scrap and Reject Control)

#### V JOB COST AND ACCOUNTING

- Charges (Hotels and Hospitals)
- Employee Releases
- Prepays (Hotels)
- Timekeeping and Payroll

#### VI TRANSPORTATION CONTROL

- Dispatching
- Emergency Notifications (Vehicular Tunnels)
- Roundhouse Dispatching
- Traffic Control and Rerouting (Terminals, Mills, etc.)
- Reservations

#### VII CENTRAL FILES

- Branch Operation
- Correspondence and Records
- Credit Authorizations
- Claims
- Duplicate Bills
- Layaways
- Margin Data
- Outpatients
- Premium Payments
- Registrations
- Stock Clearances
- Tellers to Bookkeepers—Cashier to Books

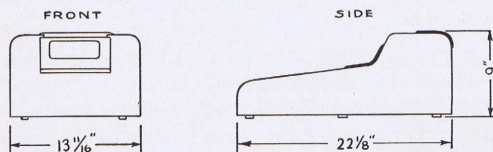
#### VIII ANNOUNCING

- Admissions (Patients, Clients, Visitors)
- Messages
- Paging



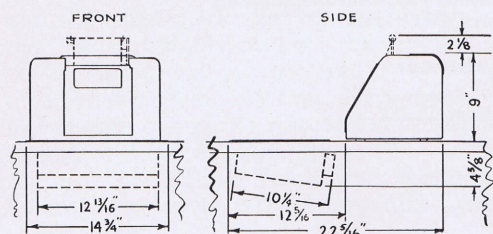
### TRANSCEIVERS

Model CB—Interior Type  
Model CA—Exterior Type



Tear-off type, Model CB1-1. Also available in exterior tear-off type, Model CA1-1 as well as with upright winder (shown by dotted lines in front view of countersunk transmitter below) as Model CB2-1 for interior type and CA2-1 for exterior type. Upright winder can be extended 9" from top, making an overall height of 17 3/4".

### with countersunk transmitter



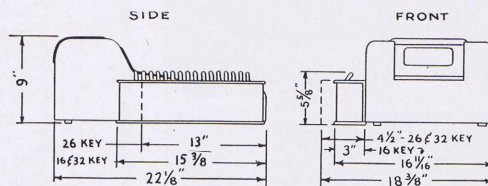
Tear-off type, Model CB1-2. Also available in exterior tear-off type, Model CA1-2, as well as with upright winder (indicated by dotted lines) as Model CB2-2 for interior type and CA2-2 for exterior type. Upright winder can be extended 9" from top, making overall height of 17 3/4".

### RECEIVERS

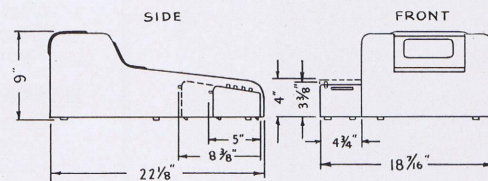


Tear-off type CB11-11 or CA11-11. Also available with winder of upright type (shown by dotted lines) as Models CB12-11 or CA12-11. The upright winder can be extended 9" from the top, making an overall height of 17 3/4".

### with key selector



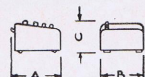
Model CB1-1 or CA1-1 with a 4 or 9 push button key box.



Model CB1-1 or CA1-1 with a 16, 26, or 32 lever type key box.

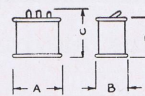
### push button box dimensions

type	A	B	C
4K—4 key box	5"	4 1/2"	3 3/4"
9K—9 key box	8 3/8"	4 1/2"	4"



### lever box dimensions

type	A	B	C	D
16K—16 key box	15 3/8"	3"	5 5/8"	4 3/8"
26K—26 key box	13"	4 1/2"	6 1/8"	5 1/8"
32K—32 key box	15 3/8"	4 1/2"	6 1/8"	5 1/8"



### SIGNALS

Visual: Lights (Wall and Upright).  
Audible: Horns, Bells, or Buzzers.

### STATION BOXES

Type	Width (in.)	Height (in.)	Depth (in.)	Width with door open	Weight (lbs.)
TRS	18 1/2	18 3/8	5 1/16	36 3/8	45
RCV	15 3/8	13 3/8	4 1/8	30 3/8	25

Addition data available by writing to New York or nearest branch office.

### BRANCHES

ALABAMA  
Birmingham  
CALIFORNIA  
\* Los Angeles  
\* San Francisco  
CANADA  
Montreal, Que.  
\* Toronto, Ont.  
COLORADO  
\* Denver  
CONNECTICUT  
Hartford  
DISTRICT of COLUMBIA  
\* Washington  
FLORIDA  
Jacksonville  
\* Miami  
GEORGIA  
\* Atlanta  
ILLINOIS  
\* Chicago  
Peoria  
INDIANA  
Fort Wayne  
\* Indianapolis  
Mishawaka  
KENTUCKY  
Louisville  
LOUISIANA  
New Orleans  
MARYLAND  
Baltimore  
MASSACHUSETTS  
\* Boston  
MICHIGAN  
\* Detroit  
Grand Rapids  
MINNESOTA  
St. Paul  
MISSOURI  
\* Kansas City  
\* St. Louis  
NEBRASKA  
Omaha  
NEW JERSEY  
\* Newark  
Pleasantville  
NEW YORK  
\* Albany  
\* Buffalo  
\* New York  
Rochester  
NORTH CAROLINA  
Charlotte  
OHIO  
\* Cincinnati  
\* Cleveland  
Columbus  
Dayton  
OKLAHOMA  
Tulsa  
PENNSYLVANIA  
\* Philadelphia  
\* Pittsburgh  
Scranton  
Steelton  
RHODE ISLAND  
Providence  
TENNESSEE  
Memphis  
TEXAS  
Dallas  
\* Houston  
San Antonio  
VIRGINIA  
Norfolk  
WISCONSIN  
\* Milwaukee

(\* Sales Office)