

GTE AUTOMATIC ELECTRIC TYPE 801 HAND TEST TELEPHONE

1. GENERAL

The Type 801 hand test telephone (Figure 1) is a dial equipped handset designed for use by installers and central office maintenance personnel. The hand test telephone can be used to perform dialing, talking, monitoring and line polarity tests. The hand test telephone can be connected to an equipment shelf in the central office, permitting the maintenance personnel to observe the operation of the equipment under test. Entry and withdrawal from a line can be accomplished without any disturbing clicks.

2. DESCRIPTION

The Type 801 hand test telephone, shown schematically in Figure 2, is equipped with a modified Type 154A dial. The dial is adjusted to an operation speed of not less than 11 nor more than

12 pulses per second. The percent break of the impulse springs is 59% to 61% break. A mode switch is located in the handgrip to condition the telephone for various tests. This mode switch has three positions, center button position (monitor), depressed button position (momentary talk) and depressed and pushed toward the receiver end position (locking talk).

3. TEST CORDS

The Type 801 hand test telephone can be equipped with a variety of cords depending upon its application. For central office use, a resistor equipped test cord is furnished. The switch on this cord applies or removes 1500 ohms resistance onto the line on test. This resistance simulates a long line loop. The various cords and method of operating the hand test telephone are described in GTE Practice 100-203-100.



Figure 1. Type 801 Hand Test Telephone.

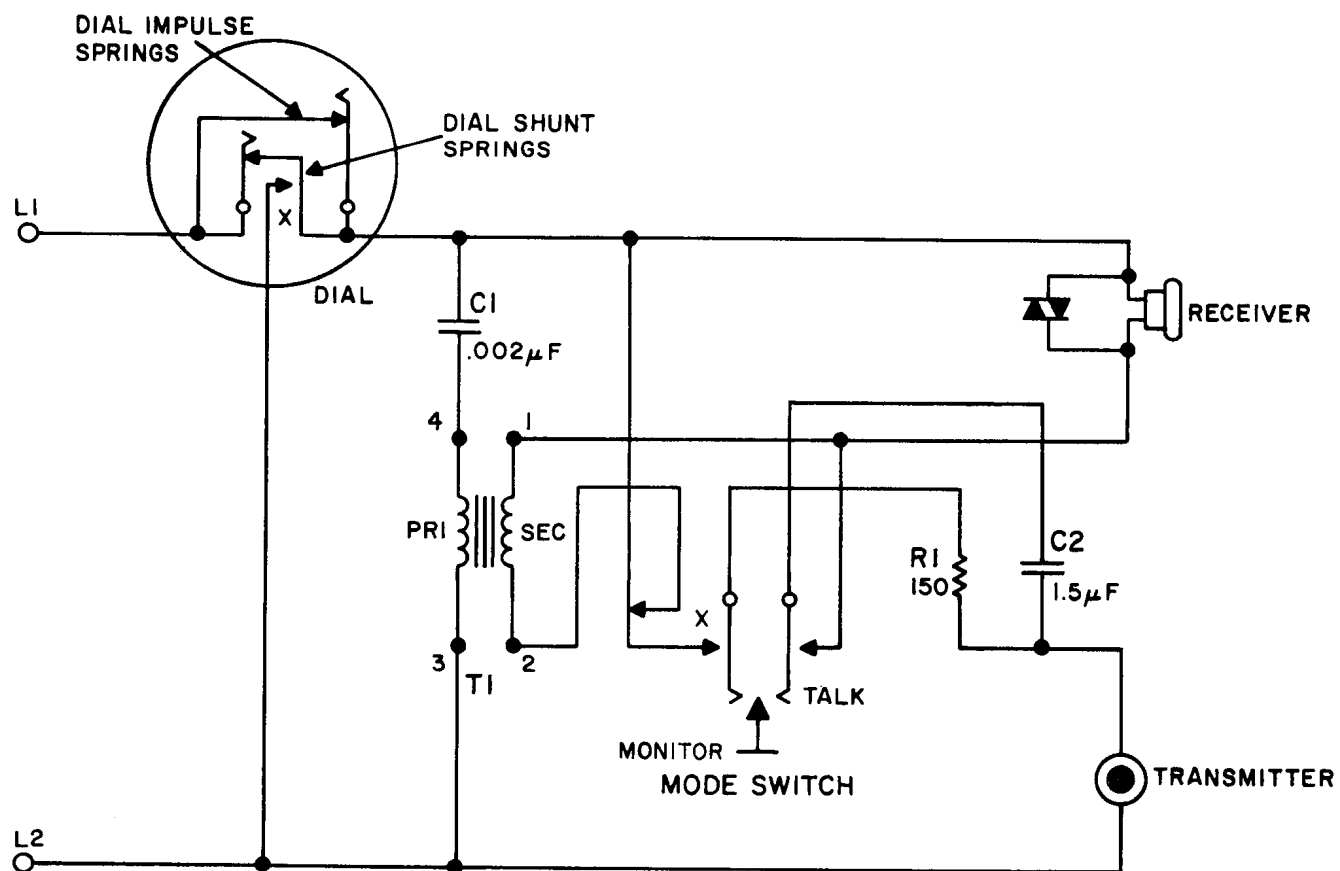


Figure 2. Schematic Diagram Type 801 Hand Test Telephone.