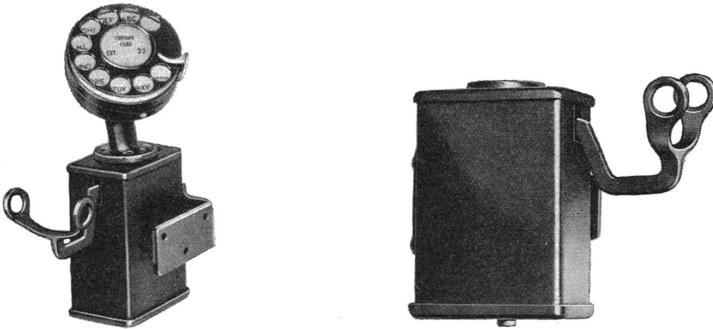


Western Electric

Handset Mountings

C1 TYPE



C1 Type Handset Mountings with and without dial

The C1 Type Handset Mounting is intended for use with the E1B Type Hand Set at anti-sidetone common battery manual or dial stations. Forms a part of the 201 Type Hand Telephone Set. It is used when it is desirable that the Mounting be attached to a vertical surface. (The hand set is suspended by its receiver.) Provided with an adjustable bracket by means of which it may be attached to either side of a desk.

The reversible mounting bracket is adjustable to four lengths:

$\frac{3}{16}''$ $\frac{1}{2}''$ $1\frac{3}{16}''$ or $1\frac{1}{8}''$

C1-3 (black finished) Handset Mountings will be furnished unless otherwise specified.

D1 TYPE



D1 Type Handset Mounting (Dial Mounted)

The D1 Type Handset Mounting is intended for use with the E1B Type Hand Sets at anti-sidetone common battery manual or dial stations. Forms a part of the 202 Type Hand Telephone Set.

D1-3 (black finished) Handset Mountings will be furnished unless otherwise specified

HANDSET MOUNTINGS—Continued

D5 Type

The D5 Type Handset Mounting is intended for use with the E2B Type Hand Set at anti-sidetone local battery talking-common battery signaling manual or dial stations. Forms a part of the 206 Type Hand Telephone Set.

D5-3 (black finished) Handset Mountings will be furnished unless otherwise specified.

D6 Type

The D6 Type Handset Mounting is intended for use with the E1B Type Hand Set at anti-sidetone, two-party selective message rate, party on tip stations in dial systems. Forms a part of the 203 Type Hand Telephone Set.

D6-3 (black finished) Handset Mountings will be furnished unless otherwise specified.

E4 Type



E4 Type Handset Mounting

The E4 Type Handset Mounting is intended for use with the E1B Type Hand Set in 750A Private Branch Exchange Systems.

E4-3 (black finished) Handset Mountings will be furnished unless otherwise specified.

“E” Type

The “E” Type Hand Sets listed below are finished in black. These Sets are also available, however, finished in ivory, gray, old brass, statuary bronze, oxidized silver, medium gold and dark gold. The dash (—) number part of the code indicates the color and should be specified on the order. Representative dash (—) numbers used to designate these colors are as follows:

Black.....	—3	Statuary Bronze.....	—7
Ivory.....	—4	Oxidized Silver.....	—8
Gray.....	—5	Medium Gold.....	—11
Old Brass.....	—6	Dark Gold.....	—12



E1B TYPE

The No. E1B Type Hand Set is intended for use with C1, D1 or similar type Handset Mountings as station Hand Telephone Sets.

Code No.	Trans-mitter	Receiver	Code	Cord Length	Hand Set Handle
E1B-3	395B-3	557B-3	*H3B9	4 ft.	E13

* If an E1B-3 Hand Set is desired equipped with a water-proof cord in place of the H3B9 cord, order should specify H3C water-proof cord.

E2A TYPE

The No. E2A Type Hand Set is intended for use in central offices and in P.B.X. systems.

Code No.	Trans-mitter	Receiver	Code	Cord Length	Equipped with Plug	Handset Handle
E2A-3	395B-3	557B-3	H4C	4 ft.	137	E23

E2B TYPE

The No. E2B Type Hand Set is a four conductor Hand Set intended for use on anti-sidetone local battery talking-common battery signaling subscriber sets in manual or dial systems. Forms a part of the 206 Type Hand Telephone Set.

Code No.	Trans-mitter	Receiver	Code	Cord Length	Handset Handle
E2B-3	395B-3	574A-3	H4D9	4 ft.	E23

Handset Hangers

Code No.	Description
1B	Mounts on a vertical surface for holding a No. 1001 Type Hand Set when not in use. The Hand Set is suspended by its receiver, which fits into a recess in the hanger. Cast brass; black finish. Overall dimensions, $3\frac{1}{16}$ inches wide, $2\frac{1}{2}$ inches deep, and $3\frac{3}{8}$ inches high.
1C	Same as the No. 1B, except that it is equipped with rubber studs and a spring, so arranged as to prevent the Hand Set from swaying. Used principally on steamships.
4A	Black finished hook arranged for supporting an E1B or E2 Type Hand Set and a black finished bumper plate into which is fastened a linoleum pad. Intended to mount on the face of P.B.X. switchboards, order turrets, etc.
5A	Consists of a No. 4A Handset Hanger provided with a reversible mounting bracket. Intended to mount on either the right or left end panel of P.B.X. switchboards. Bumper plate must be mounted accordingly.

Handset Mountings

The following Handset Mountings are for use with E1B, E2B or similar type Hand Sets and form a part of the 200 Type Hand Telephone Sets

The Handset Mountings described below are finished in black. They are available, however, in ivory, gray, old brass, statuary bronze, oxidized silver, medium gold and dark gold. The dash (—) number part of the code indicates the color and should be specified on the order. Representative dash (—) numbers used to designate these colors are as follows:

Black.....	—3	Statuary Bronze.....	—7
Ivory.....	—4	Oxidized Silver.....	—8
Gray.....	—5	Medium Gold.....	—11
Old Brass.....	—6	Dark Gold.....	—12

Western Electric

HAND TELEPHONE SETS



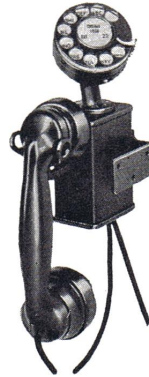
201A-3 Hand Telephone Set



202A-3 Hand Telephone Set



202B-3 Hand Telephone Set



201B-3 Hand Telephone Set

The following Hand Telephone Sets are of the anti-sidetone type and are arranged for use with the anti-sidetone subscriber sets shown on pages 205 to 209. For information relative to water-proofed hand set cords associated with these Hand Telephone Sets, see "Hand Sets" pages 100 to 102.

All of the Hand Telephone Sets listed below are finished in black. These Sets are also available, however, finished in ivory, gray, old brass, statuary bronze, oxidized silver, medium gold and dark gold. The dash (—) number part of the code indicates the color and should be specified on the order. Representative dash (—) numbers used to designate these colors are as follows:

Black	—3	Statuary Bronze	—7
Ivory	—4	Oxidized Silver	—8
Gray	—5	Medium Gold	—11
Old Brass	—6	Dark Gold	—12

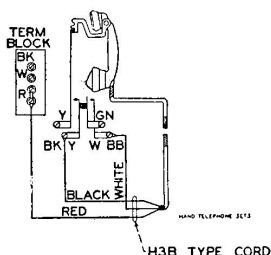
Example: If a 202B Hand Telephone Set with statuary bronze finish is desired, it should be ordered thus:

1—202B-7 Hand Telephone Set

Western Electric

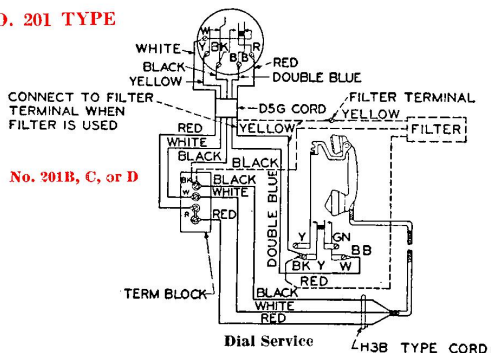
HAND TELEPHONE SETS—Continued

NO. 201 TYPE



Manual Service

No. 201A



Dial Service

The No. 201 Type Hand Telephone Set is designed for general use at anti-sidetone common battery manual and dial stations.

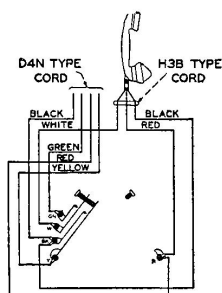
The No. 201A is intended for use at manual stations.

The No. 201B, 201C and 201D Types are intended for use at dial stations. When specified in the order, these Sets will be furnished equipped with a No. 61G Filter to suppress dialing induction into radio receiving sets.

Code No.	Hand Set Mtg. No.	Dial No.	Consists of Dial Mtg. No.	Cords	Hand Set	Replaces
*201A-3	C1-3	—	—	—	E1B-3	101A-3
201B-3	C1-3	4HA-3	39A-3	D5G	E1B-3	101B-3
201C-3	C1-3	4HB-3	39A-3	D5G	E1B-3	101C-3
201D-3	C1-3	4HE-3	39A-3	D5G	E1B-3	101D-3

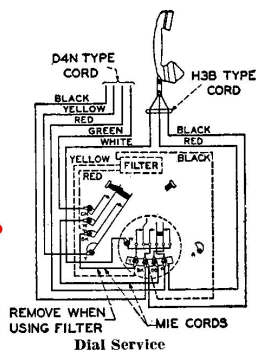
* Equipped with card holder.

NO. 202 TYPE



Manual Service

No. 202A



Dial Service

No. 202B, C, or D

The No. 202 Type Hand Telephone Set provides the same service as the 201 Type, the difference in the two types being in the handset mounting.

The No. 202A is intended for use in anti-sidetone common battery manual stations.

The Nos. 202B, 202C and 202D Types are intended for use in anti-sidetone common battery dial stations. When specified in the order these Hand Telephone Sets will be furnished equipped with a No. 61H Filter to suppress dialing induction into radio receiving sets.

Code No.	Hand Set Mtg. No.	Dial No.	App. Blank No.	Consists of (a) Cords	Hand Set	Recommended in Place of
202A-3	D1-3	—	50J-3	†D4N-9	†E1B-3	102A-3
202B-3	D1-3	4HA-3	—	†One D4N-9 *Two M1E	†E1B-3	102B-3
202C-3	D1-3	4HB-3	—	†One D4N-9 *Two M1E	†E1B-3	102C-3
202D-3	D1-3	4HE-3	—	†One D4N-9 *Two M1E	†E1B-3	102D-3

* 5½ inches long.

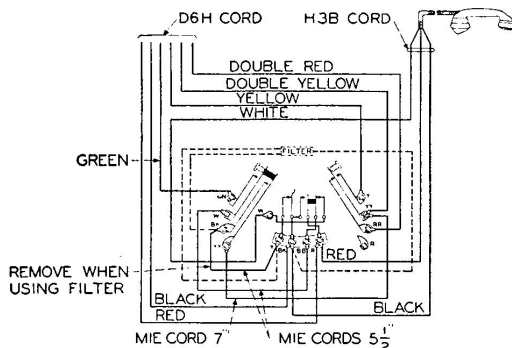
† When specified in the order will be furnished equipped with a D4S water-proof cord instead of the D4N-9 cord. For information relative to water-proof hand set cords, see information on "Hand Sets".

(a) When specified in the order will be furnished equipped with a D4T type cord of corresponding color assembled with a No. 283A type plug (D4T-9 cord and No. 283A-3 plug furnished unless otherwise specified) instead of the corresponding D4N type cord.

Western Electric

HAND TELEPHONE SETS—Continued

NO. 203 TYPE



The No. 203 Type Hand Telephone Set is designed for use at anti-sidetone two-party selective message rate, party on tip stations in dial systems.

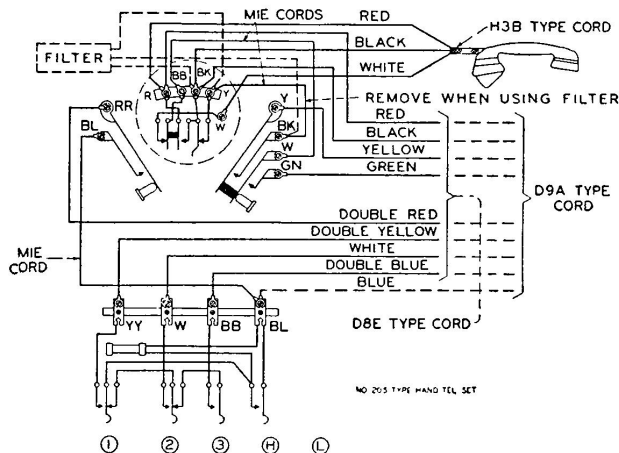
When specified in the order these Hand Telephone Sets will be furnished equipped with a No. 61H Filter to suppress dialing induction into radio receiving sets.

Code No.	Hand Set Mtg.	Dial No.	Consists of		Hand Set	Recommended in Place of
203A-3	D6-3	4HA-3	†One D6H-9	*Three M1E	E1B-3	103A-3
203B-3	D6-3	4HB-3	†One D6H-9	*Three M1E	E1B-3	103B-3
203C-3	D6-3	4HE-3	†One D6H-9	*Three M1E	E1B-3	103C-3

* One 7 inches long and two 5½ inches long.

† When specified in the order will be furnished equipped with a D6J waterproof cord instead of the D6H-9 cord. For information relative to waterproof hand set cords, see information on "Hand Sets".

NO. 205 TYPE



The No. 205 Type Hand Telephone Set is designed for use with anti-sidetone subscriber sets in No. 750A Private Branch Exchange systems.

When specified in the order these Hand Telephone Sets will be furnished equipped with a No. 61J Filter to suppress dialing induction into radio receiving sets.

The No. 205A, 205B and 205C Types are intended for use at key stations not arranged for routing central office trunk calls.

The No. 205D, 205E and 205F Types are intended for use at key stations arranged for routing central office trunk calls to and from keyless stations.

Code No.	Hand Set Mtg.	Dial No.	Consists of		Hand Set	Recommended in Place of
205A-3	E4-3	4HA-3	One D8E-9	*Three M1E	E1B-3	105A-3
205B-3	E4-3	4HB-3	One D8E-9	*Three M1E	E1B-3	105B-3
205C-3	E4-3	4HE-3	One D8E-9	*Three M1E	E1B-3	105C-3
205D-3	E4-3	4HA-3	One D9A-9	*Three M1E	E1B-3	105D-3
205E-3	E4-3	4HB-3	One D9A-9	*Three M1E	E1B-3	105E-3
205F-3	E4-3	4HE-3	One D9A-9	*Three M1E	E1B-3	105F-3

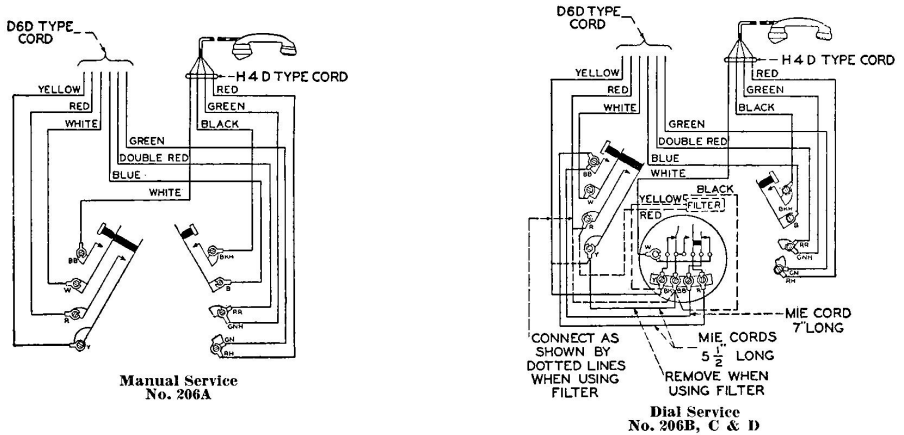
* 5½ inches long.

† When specified in the order will be furnished equipped with a D8F type cord of corresponding color assembled with a No. 274A type plug (274A-3 plug furnished unless otherwise specified) instead of the corresponding D8E type cord.

Western Electric

HAND TELEPHONE SETS—Continued

NO. 206 TYPE



The No. 206 Type Hand Telephone Set is designed for use at anti-sidetone local battery talking-common battery signaling subscriber stations in manual or dial systems.

The No. 206A Type is intended for use in manual systems.

The No. 206B, 206C and 206D Types are intended for use in dial systems. When specified in the order these Sets will be furnished equipped with a No. 61H Filter to suppress dialing induction into radio receiving sets.

Code No.	Hand Set Mtg.	Dial No.	App. Blank No.	Consists of		Hand Set
				Cords		
206A-3	D5-3	—	50J-3	D6D-9	*Three M1E	E2B-3
206B-3	D5-3	4HA-3	—	D6D-9	*Three M1E	E2B-3
206C-3	D5-3	4HB-3	—	D6D-9	*Three M1E	E2B-3
206D-3	D5-3	4HE-3	—	D6D-9	*Three M1E	E2B-3

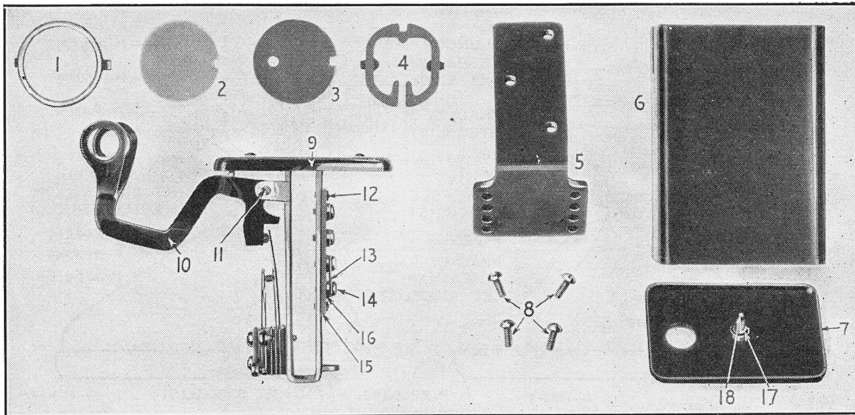
* One 7 inches long and two 5 1/2 inches long.

Western Electric

HANDSET MOUNTINGS—Continued

Replacement Parts

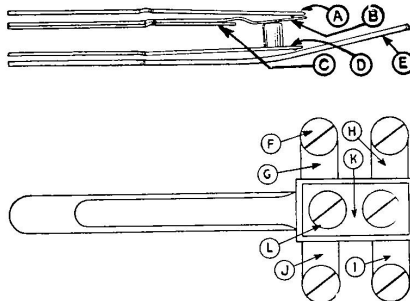
C1 HANDSET MOUNTING



Parts List for C1 Handset Mounting

Part	Name	Part No.	Part	Name	Part No.
1	Card Holder Frame.....	P-220057	10	Switchhook.....	P-223587
2	Celluloid Window.....	P-137593	11	Rubber Stop.....	P-93377
3	Card Retainer.....	P-164442	12	Pin.....	P-223578
4	Reinforcing Ring.....	P-172045	13	.088" x 1/4" Long Tubular Rivet.....	P-223595
5	Bracket.....	P-223588	14	Strap.....	P-146320
6	Case.....	P-238829	15	Button H.M. Screw.....	P-223598
7	Bottom Plate.....	P-223586	16	Terminal Strip.....	P-204003
8	R.H.M. Screw.....	P-98663	17	Screw Bushing.....	P-215578
9	Cover and Terminal Plate Assembly.....	P-290061	18	Spring.....	P-223580
				Fin. H.M. Screw.....	P-223580

Note: When the C1 Type Handset Mounting is used in manual systems the card holder illustrated in the cut is required, but not furnished unless specified. When used in dial systems one No. 39A dial mounting is required. This also is not furnished unless specified. For associated equipment for various classes of service, see "Hand Telephone Sets".



SPRING ASSEMBLY FOR C1 TYPE HANDSET MOUNTING

Parts List for C1 Type Handset Mounting Spring Assembly

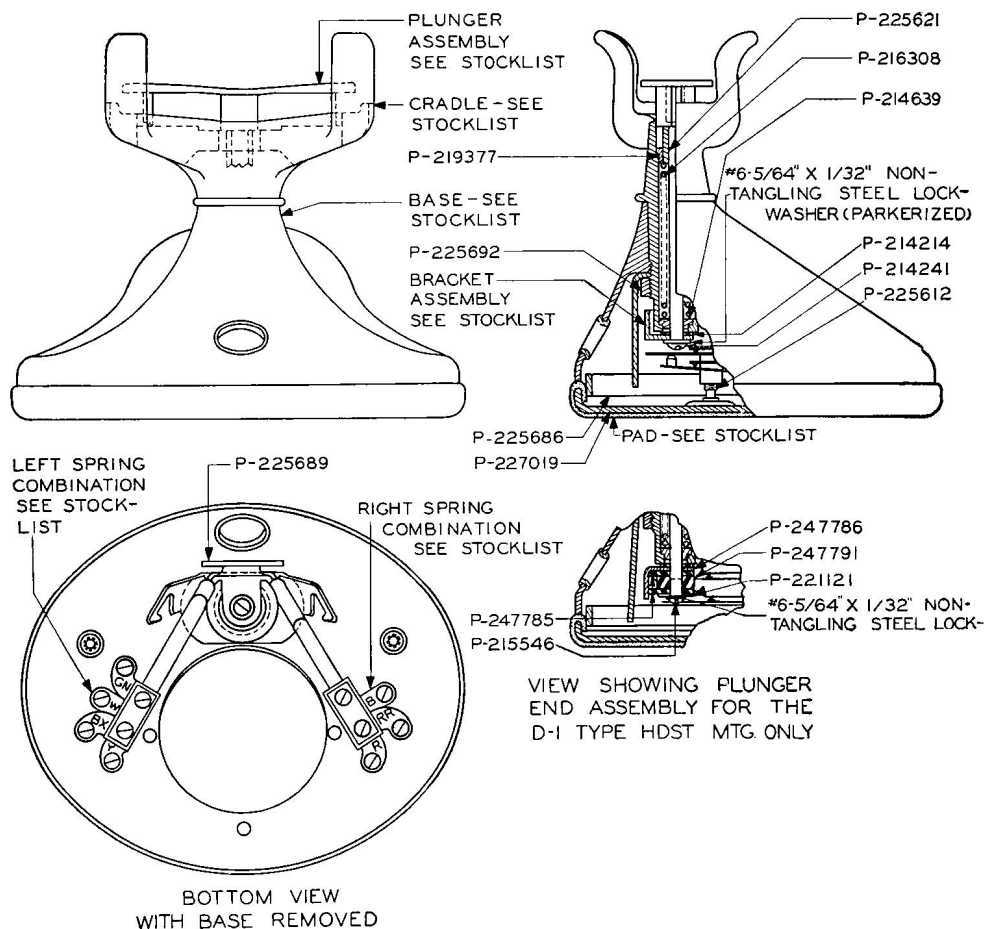
Part	Name	Part No.	Part	Name	Part No.
A	Contact Spring.....	P-223600	I	Terminal.....	P-223862
B	Contact Spring.....	P-223601	J	Terminal.....	P-223860
C	Contact Spring.....	P-223603	K	Clamping Plate.....	P-223576
D	Contact Spring.....	P-223602	L	R.H.M. Screw.....	P-118282
E	Contact Spring.....	P-223599		Rubber Bushing.....	P-223581
F	Button H.M. Screw.....	P-128913		Rubber Stud.....	P-223582
G	Terminal.....	P-223863		Insulator (1/2" thick).....	P-223574
H	Terminal.....	P-223861		Insulator (3/4" thick).....	P-223575

For complete Contact Spring Assembly specify P-290060.

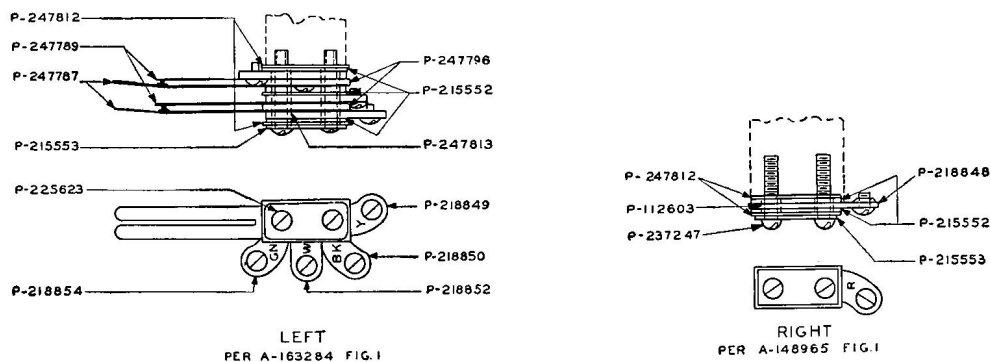
HANDSET MOUNTINGS

Replacement Parts—Continued

D TYPE HANDSET MOUNTING



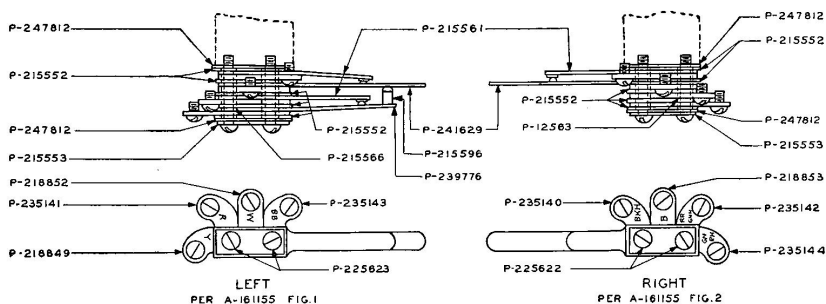
SPRING COMBINATIONS D-1 TYPE HANDSET MOUNTING



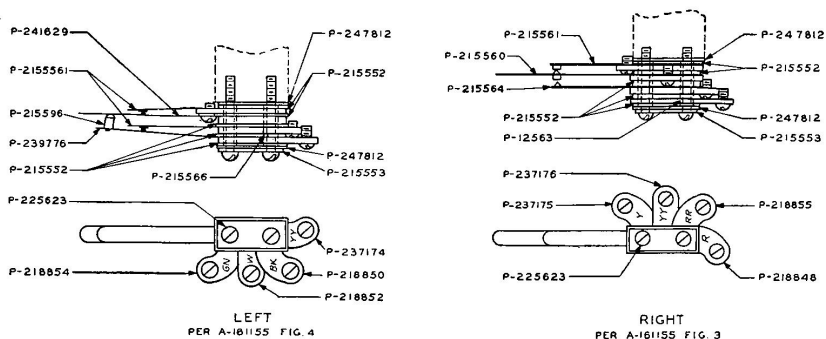
HANDSET MOUNTINGS

Replacement Parts—Continued

SPRING COMBINATIONS **D5 TYPE** HANDSET MOUNTING



SPRING COMBINATIONS **D6 TYPE** HANDSET MOUNTING



Parts list for "D" Type Handset Mountings

Name	D1-3		D5-3		D6-3	
	No. Reqd.	Piece Part	No. Reqd.	Piece Part	No. Reqd.	Piece Part
Button H.M. Screw	2	P-237247				
Pad.	1	P-236451	1	P-236451	1	P-236451
Cradle.	1	P-233129	1	P-233129	1	P-233129
Base Plate.	1	P-227019	1	P-227019	1	P-227019
Ring Nut.	1	P-225692	1	P-225692	1	P-225692
Bracket	1	P-225689	1	P-225689	1	P-225689
Clamp.	1	P-225686	1	P-225686	1	P-225686
Button H.M. Screw	2	P-225623	2	P-225623	4	P-225623
Button H.M. Screw			2	P-225622		
Bushing	1	P-225621	1	P-225621	1	P-225621
Fil. H.M. Screw	2	P-225612	2	P-225612	2	P-225612
Bushing	1	P-219377	1	P-219377	1	P-219377
Spring	1	P-216308	1	P-216308	1	P-216308
Stop.			1	P-215596	1	P-215596
Bushing			2	P-215566	2	P-215566
Contact Spring			3	P-215561	3	P-215561
Contact Spring				P-239776	1	P-239776
Insulator	5 +	P-215552	10 +	P-215552	10 +	P-215552
Clamp Plate	2	P-215553	2	P-215553	2	P-215553
Bushing	1	P-214639	1	P-214639	1	P-214639
Button H.M. Screw			1	P-214241	1	P-214241
Washer	1	P-214214	1	P-214214	1	P-214214
Bushing	2	P-112603	2	P-12563	2	P-12563

HANDSET MOUNTINGS

Replacement Parts—Continued

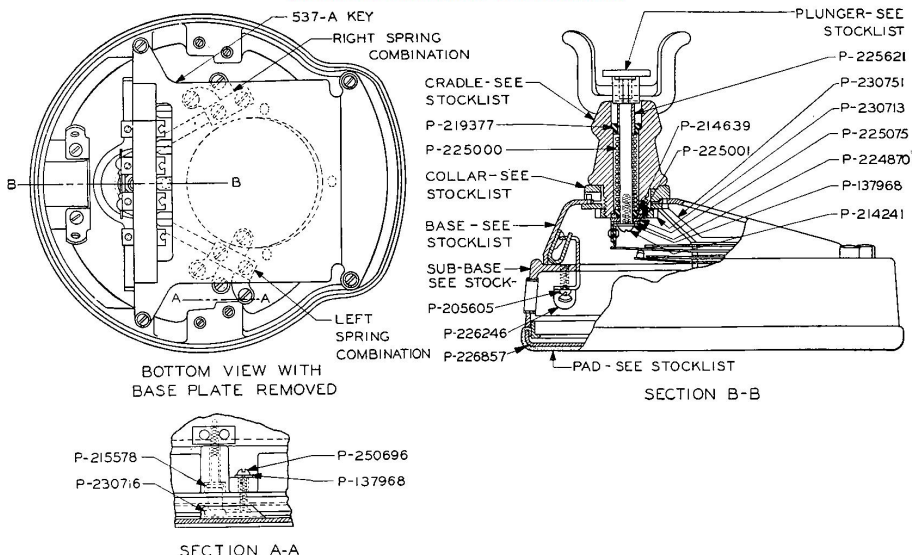
Name	D1-3		D5-3		D6-3	
	No. Reqd.	Piece Part	No. Reqd.	Piece Part	No. Reqd.	Piece Part
Insulator.....	4	P-247812	4	P-247812	4	P-247812
Washer.....	1	P-221121
Base.....	1	P-224757	1	P-235160	1	P-236883
Plunger Assembly.....	1	P-239627	1	P-239627	1	P-239627
Operating Plate.....	2	P-247785
Bracket.....	1	P-247786
Contact Spring.....	2	P-247787	2	P-241629	1	P-215564
Contact Spring.....	2	P-247789	1	P-215560
Contact Spring.....	1	P-241629
Separator.....	1	P-247791
Insulator.....	2	P-247796
Button H.M. Screw.....	1	P-215546
Bushing.....	2	P-247813
Lock Washer (Parkerized).....	1	..	1	..	1	..
Terminal.....	1	P-218854	1	P-235144	1	P-237176
Terminal.....	1	P-218852	1	P-235143	1	P-237175
Terminal.....	1	P-218850	1	P-235142	1	P-237174
Terminal.....	1	P-218849	1	P-235141	1	P-218855
Terminal.....	1	P-218848	1	P-235140	1	P-218854
Terminal.....	1	P-218853	1	P-218852
Terminal.....	1	P-218852	1	P-218850
Terminal.....	1	P-218849	1	P-218848
Bracket.....	1	P-225688	1	P-225688
Base Plate Assembly.....	1	*P-290092	1	*P-290092	1	*P-290092

* This assembly is stocked as a spare part carried in Merchandise Stock.

For complete Left and Right Spring Assemblies specify as follows:

- D1 Type—Right Spring Combination—A-148965 Fig. 1
- D1 Type—Left Spring Combination—A-163284 Fig. 1
- D5 Type—Right Spring Combination—A-161155 Fig. 2
- D5 Type—Left Spring Combination—A-161155 Fig. 1
- D6 Type—Right Spring Combination—A-161155 Fig. 3
- D6 Type—Left Spring Combination—A-161155 Fig. 4

E4 TYPE HANDSET MOUNTINGS

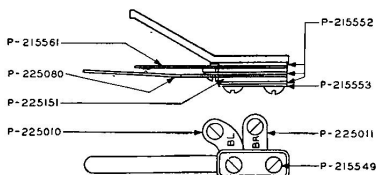


Western Electric

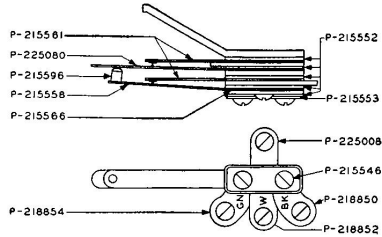
HANDSET MOUNTINGS

Replacement Parts—Continued

SPRING COMBINATIONS E-4 TYPE HANDSET MOUNTING



LEFT
PER A-148808 FIG. 1



RIGHT
PER A-148808 FIG. 2

Parts List E4 Type Handset Mounting

E4-3		
Name	No. Reqd.	Piece Part
Pad.....	1	P-225266
Base.....	1	P-225017
Collar.....	1	P-224860
Cradle.....	1	P-224835
Base Plate Assembly.....	1	*P-290077
Spring.....	2	P-215578
R.H.M. Screw.....	2	P-250696
Stud.....	1	P-215596
Base Plate.....	1	P-226857
Ring Nut.....	1	P-230713
Spring.....	1	P-225000
Washer.....	1	P-225001
Contact Spring.....	2	P-225080
Contact Spring.....	3	P-215561
Contact Spring.....	1	P-215558
Insulator.....	8	P-215552
Bushing.....	2	P-215566
Clamping Plate.....	2	P-225151
Button H.M. Screw.....	2	P-215553
Button H.M. Screw.....	2	P-215546
Button H.M. Screw.....	2	P-215549
Fil. H.M. Screw.....	2	P-230716

E4-3		
Name	No. Reqd.	Piece Part
Clamp.....	1	P-225084
Bushing.....	1	P-225621
Hinge Bracket.....	1	P-226246
Mounting Bracket.....	1	P-230751
Bushing.....	1	P-219377
Bushing.....	1	P-214639
Washer.....	1	P-225075
Lock Washer.....	3	P-137968
Button H.M. Screw.....	1	P-214241
R.H.M. Screw.....	2	P-205605
Circuit Label.....	1	P-244668
Sub Base.....	1	P-231572
Plunger.....	1	P-226226
Terminal Assembly.....	1	P-218850
Terminal Assembly.....	1	P-218852
Terminal Assembly.....	1	P-218854
Terminal Assembly.....	1	P-225010
Terminal Assembly.....	1	P-225011
Terminal Assembly.....	1	P-225008
537-A Key.....	1	P-224870
Bracket Assembly.....	1	

* This assembly is stocked as a spare part carried in Merchandise Stock.

For complete Right Spring Assembly specify A-148808 Fig. 1

For complete Left Spring Assembly specify A-148808 Fig. 2

HANDSET MOUNTING APPARATUS BLANKS

50H TYPE

The 50H Type Apparatus Blank is designed for use with "B" and "E" Type Handset Mountings when they are for use in manual service. Does not form a part of the Handset Mounting and must be ordered separately. Furnished in different finishes to correspond with Handset Mountings. Black finish furnished unless otherwise specified.

50J TYPE

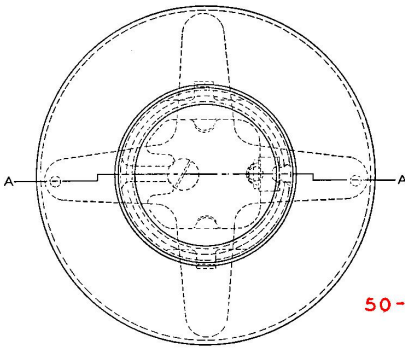
The 50J Type Apparatus Blank is similar to the 50H Type except that it is designed for the "D" Type Handset Mounting.

Western Electric

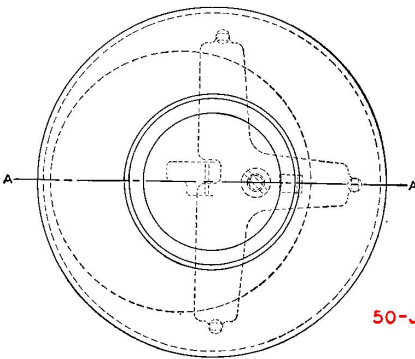
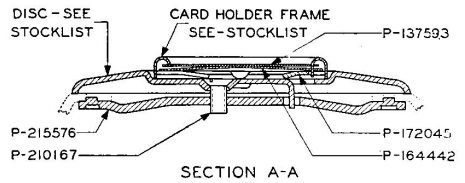
HANDSET MOUNTINGS

Apparatus Blanks—Continued

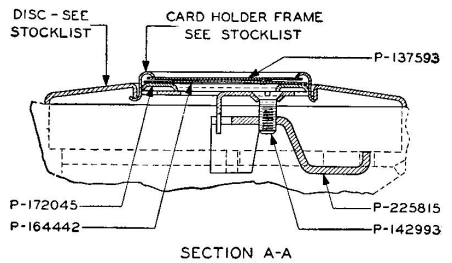
REPLACEMENT PARTS



50-H APPARATUS BLANK



50-J APPARATUS BLANK



50H-3

50J-3

Name	No. Reqd.	Piece Part
Clamping Plate.....	1	P-215576
Disc.....	1	P-215591
F.H.M. Screw.....	1	P-210167
Card Holder Frame.....	1	P-220057
Reinforcing Ring.....	1	P-172045
Card Retainer.....	1	P-164442
Window.....	1	P-137593

Name	No. Reqd.	Piece Part
Clamping Plate.....	1	P-225815
Disc.....	1	P-225816
F.H.M. Screw.....	1	P-142993
Card Holder Frame.....	1	P-220057
Reinforcing Ring.....	1	P-172045
Card Retainer.....	1	P-164442
Window.....	1	P-137593

All parts listed black finished.