

EDWARDS

TELEPHONE SYSTEMS AND DEVICES



CATALOG N^o 12



EDWARDS^{and} COMPANY INC.

NEW YORK CITY

EDWARDS^{and} COMPANY INC.

APARTMENT TELEPHONE SYSTEMS

Bulletin No. 12A

July 1, 1927



THIS bulletin describes complete telephone systems for every type of apartment building. It is important to note that Edwards systems are designed for positive, efficient service, with the greatest ease of installation. The Mail Boxes and Telephones have been designed to provide the easiest possible wall cut and mounting work, and have been simplified to the extent that experts no longer are needed for such installations. All the material carries the usual Edwards guarantee.



ATLANTA, GA.
BALTIMORE, MD.
BOSTON, MASS.
CHICAGO, ILL.

COLUMBUS, OHIO
DALLAS, TEXAS
DENVER, COLO.

KANSAS CITY, MO.
LOS ANGELES, CAL.
NEW ORLEANS, LA.

PHILADELPHIA, PA.
PITTSBURGH, PA.
PORTLAND, ORE.
SAN FRANCISCO, CAL.

INDEX TO EDWARDS APARTMENT TELEPHONE SYSTEMS

*Service information, wiring diagrams, etc.,
will be found on pages indicated.*



COMMON TALKING—ONE VESTIBULE ONLY

	SYSTEM	PAGE
Vestibule to apartments only.	10L or 10C	14
Vestibule, apartments, with janitor's answering station.	20L or 20C	14
Vestibule, apartments, with janitor's calling and answering station. . .	21L or 21C	15
Vestibule, apartments, with janitor's calling and answering annunciator station.	22L or 22C	15
Vestibule, apartments, tradesmen, with janitor's calling and answering station.	30L or 30C	16
Vestibule, apartments, tradesmen, with janitor's calling and answering annunciator station.	31L or 31C	16

SECTIONAL TALKING—TWO OR MORE VESTIBULES

Vestibules, apartments, with one janitor's answering station.	40L or 40C	17
Vestibules, apartments, with one janitor's calling and answering station	41L or 41C	17
Vestibules, apartments, with one janitor's answering and calling annunciator station.	42L or 42C	18
Vestibules, apartments, tradesmen, with one janitor's answering and calling station.	43L or 43C	18

SELECTIVE TALKING, NON-INTERFERING

Vestibule and apartments through central station annunciator.	6C	19
Vestibule, apartments, janitor, laundry, etc., full intercommunication through lamp switchboard.	50	19
Vestibule, apartments, janitor, laundry, etc., full intercommunication through drop signal switchboard.	51	19

COMBINED MAIL BOX—TELEPHONE GROUP

*For use where Mail Boxes and Vestibule Telephones
are at same location*

A complete mail box and telephone group not only presents a neater appearance but offers far easier installation. It eliminates the difficult "matching up" of many separate pieces.

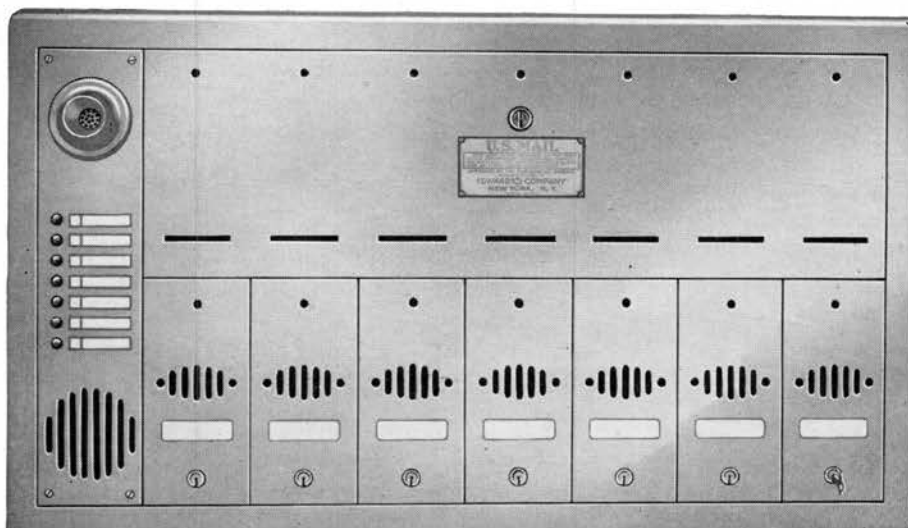
The telephone is an integral part of the mail box group, occupying the same space as one mail box

compartment (or two mail box compartments where there are two rows of buttons). The mail box construction itself has many features, described on page 6.

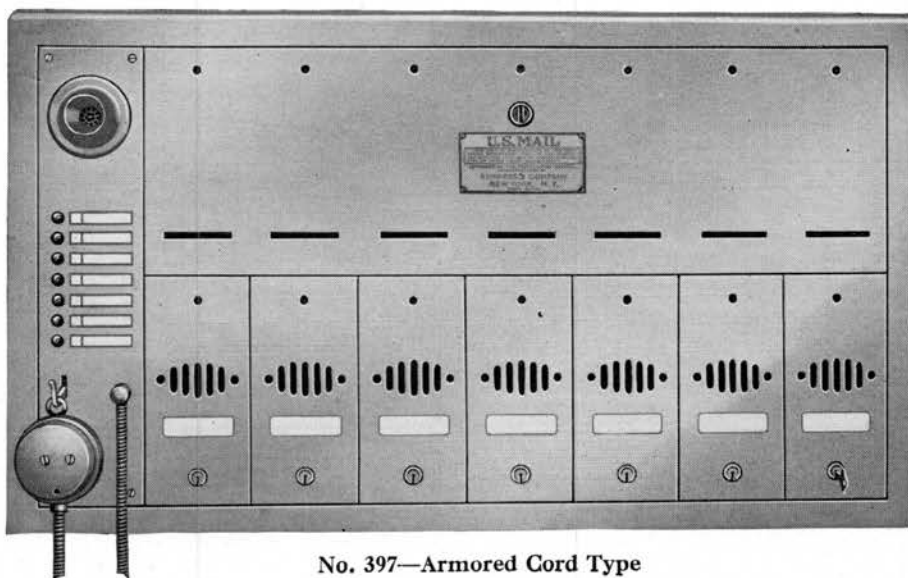
Various arrangements to meet all size installations are illustrated with dimensions and prices on the following page.

LOUD SPEAKING CORDLESS TYPE IS NO. 396.

ARMORED CORD TYPE IS NO. 397.



No. 396—Loud Speaking Type



No. 397—Armored Cord Type

COMBINATION MAIL BOX—TELEPHONE GROUP

As described on page 3

3 to 19 Apartments, Larger Groups on Next Page

No. 396—Loud Speaking Cordless Type.

No. 397—Armored Cord Type.

Specify: Catalog number and style number. The arrangements shown will be found most practical from every standpoint. The style number automati-

cally indicates the number of apartments. The Post Office Department has ruled that a receptacle must be provided for the janitor—be sure, therefore, to include the janitor's apartment in the total.

Standard Finish: Satin brass or black. Special commercial finishes \$1.25 net per gang.

3APTS.



*STYLE 3
1GROUP

4APTS.



STYLE 4
1GROUP

5APTS.



STYLE 5
1GROUP

6APTS.



STYLE 6
1GROUP

7APTS.



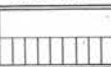
STYLE 7
1GROUP

8APTS.



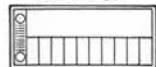
STYLE 8
1GROUP

9APTS.



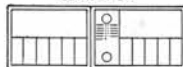
STYLE 9
1GROUP

10APTS.



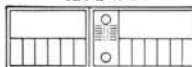
STYLE 10
1GROUP

11APTS.



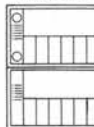
STYLE 11
2 GROUPS

12APTS.



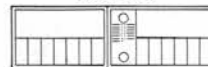
STYLE 12
2 GROUPS

12APTS.



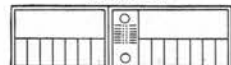
STYLE 12-A
2 GROUPS

13APTS.



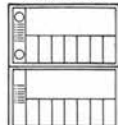
STYLE 13
2 GROUPS

14APTS.



STYLE 14
2 GROUPS

14APTS.



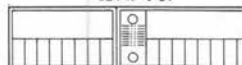
STYLE 14-A
2 GROUPS

15APTS.



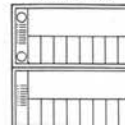
STYLE 15
2 GROUPS

16APTS.



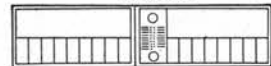
STYLE 16
2 GROUPS

16APTS.



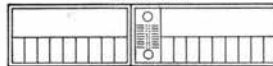
STYLE 16-A
2 GROUPS

17APTS.



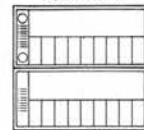
STYLE 17
2 GROUPS

18APTS.



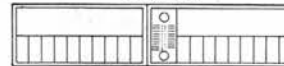
STYLE 18
2 GROUPS

18APTS.



STYLE 18-A
2 GROUPS

19APTS.

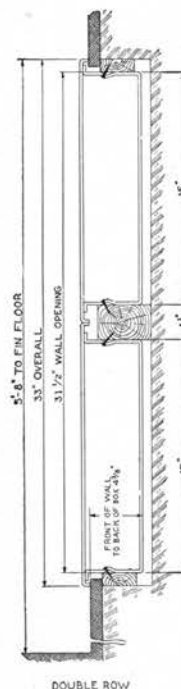


STYLE 19
2 GROUPS

Copyright, 1927, Edwards & Co., Inc.



SINGLE ROW



DOUBLE ROW

Style No. *	No. of Groups	Overall		Wall Cut		Approx. Weight	List Price	
		Height (inches)	Width (inches)	Height (inches)	Width (inches)		# 396	# 397
3	1	16 1/2	15 1/4	15	13 7/8	16 lbs.	\$65.80	\$53.80
4	1	16 1/2	18 3/8	15	17 1/4	18 "	75.40	63.40
5	1	16 1/2	22	15	20 5/8	23 "	85.00	73.00
6	1	16 1/2	25 3/8	15	24	26 "	94.60	82.60
7	1	16 1/2	28 3/4	15	27 3/8	28 "	104.20	92.20
8	1	16 1/2	32 1/8	15	30 5/8	32 "	113.80	101.80
9	1	16 1/2	35 1/2	15	34	35 "	123.40	111.40
10	1	16 1/2	38 7/8	15	37 3/8	38 "	133.00	121.00
11	2	16 1/2	47 1/4	15	45 3/4	46 "	142.60	130.60
12	2	16 1/2	50 5/8	15	49 1/8	52 "	152.20	140.20
12A	2	33	25 3/8	31 1/2	24	52 "	152.20	140.20
13	2	16 1/2	54	15	52 1/2	55 "	161.80	149.80
14	2	16 1/2	57 3/8	15	55 7/8	58 "	171.40	159.40
14A	2	33	28 3/4	31 1/2	27 3/8	58 "	171.40	159.40
15	2	16 1/2	60 7/8	15	59 1/8	61 "	181.00	169.00
16	2	16 1/2	64 1/4	15	62 1/2	64 "	190.60	178.60
16A	2	33	32 3/8	31 1/2	30 5/8	64 "	190.60	178.60
17	2	16 1/2	67 3/8	15	65 3/8	67 "	200.20	188.20
18	2	16 1/2	71	15	69 1/4	70 "	209.80	197.80
18A	2	33	35 1/2	31 1/2	34	70 "	209.80	197.80
19	2	16 1/2	74 3/8	15	72 5/8	73 "	219.40	207.40

Larger sizes on next page.

*The style number indicates the number of apts.

COMBINATION MAIL BOX-TELEPHONE GROUP, Cont'd

As described on page 3

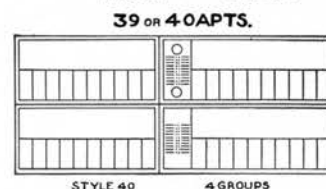
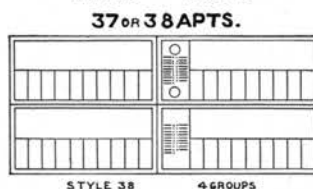
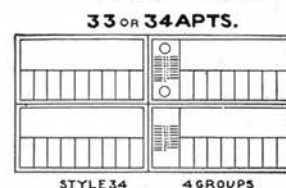
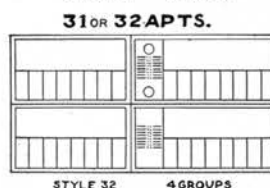
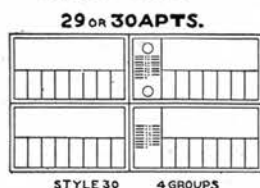
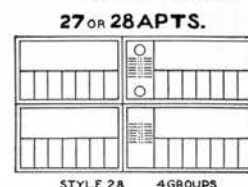
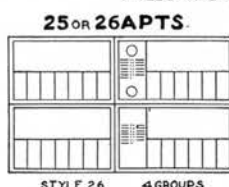
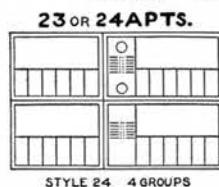
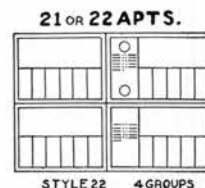
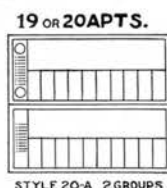
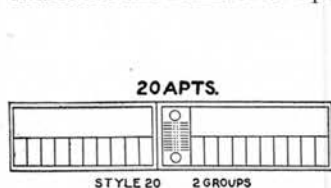
20 to 40 Apts., Smaller Groups on Page 4

No. 396—Loud Speaking Cordless Type. **No. 397**—Armored Cord Type.

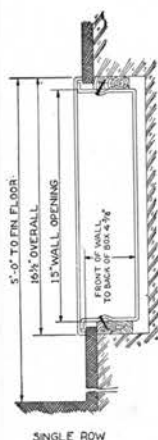
Specify: Catalog number and style number. The arrangements shown will be found most practical from every standpoint. The style number automatically indicates the number of apartments. The Post

Office Department has ruled that a receptacle must be provided for the janitor—be sure, therefore, to include the janitor's apartment in the total.

Standard Finish: Satin brass or black. Special commercial finishes \$1.25 net per gang.

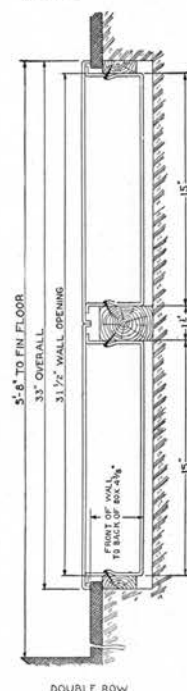


Copyright, 1927, Edwards & Co., Inc.



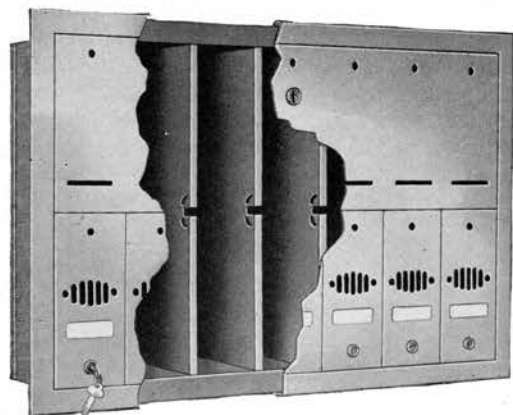
Style No. *	No. of Groups	Overall		Wall Cut		Approx. Weight	List Price	
		Height (inches)	Width (inches)	Height (inches)	Width (inches)		No. 396	No. 397
20	2	16 1/2	77 3/4	15	76	76 lbs.	\$229.00	\$217.00
20A	4	33	38 7/8	31 1/2	37 3/8	76 "	229.00	217.00
21	4	33	47 1/4	31 1/2	45 3/4	83 "	238.60	226.60
22	4	33	47 1/4	31 1/2	45 3/4	92 "	248.20	236.20
23	4	33	50 5/8	31 1/2	49 1/8	97 "	257.80	245.80
24	4	33	50 5/8	31 1/2	49 1/8	98 "	267.40	255.40
25	4	33	54	31 1/2	52 1/2	100 "	277.00	265.00
26	4	33	54	31 1/2	52 1/2	104 "	286.60	274.60
27	4	33	57 3/8	31 1/2	55 7/8	112 "	296.20	284.20
28	4	33	57 3/8	31 1/2	55 7/8	113 "	305.80	293.80
29	4	33	60 7/8	31 1/2	59 1/8	114 "	315.40	303.40
30	4	33	60 7/8	31 1/2	59 1/8	116 "	325.00	313.00
31	4	33	64 1/4	31 1/2	62 1/2	118 "	334.60	322.60
32	4	33	64 1/4	31 1/2	62 1/2	122 "	344.20	332.20
33	4	33	67 5/8	31 1/2	65 7/8	128 "	353.80	341.80
34	4	33	67 5/8	31 1/2	65 7/8	128 "	363.40	351.40
35	4	33	71	31 1/2	69 1/4	130 "	373.00	361.00
36	4	33	71	31 1/2	69 1/4	134 "	382.60	370.60
37	4	33	74 3/8	31 1/2	72 5/8	138 "	392.20	380.20
38	4	33	74 3/8	31 1/2	72 5/8	140 "	401.80	389.80
39	4	33	77 3/4	31 1/2	76	144 "	411.40	399.40
40	4	33	77 3/4	31 1/2	76	146 "	421.00	409.00

*The style number indicates the number of apts.



MAIL BOXES ONLY

For Mounting apart from or alongside Vestibule Telephone



EDWARDS Mail Boxes are fully approved by the Post Office Department and are a decided improvement in appearance and construction. The trim is not just a flat plate, but has a turned over edge which gives a finished appearance and will not warp or buckle. Individual compartment doors are automatically held up when opened. Compartment partitions are steel plates folded completely over so as to give a double thickness and a smooth rounded edge which will not tear the mail or cut the hands.

In choosing your arrangement, bear in mind the following:

1. The Post Office Department puts a **maximum** limit on the number of mail box **groups**: that is, the number of master locks it will furnish. The number of groups that can be used is the result, or fraction of result, when the total number of apartments is divided by six. Example: 20 apartments divided by 6 is 3 2/6, and there could be 4 groups

used, with as many boxes per group as desired, such as 4, 5-gang. There is no **minimum** limit to groups, however, and 2, 10-gang could be used.

2. Practical installation and manufacturing limits the number of **gangs** per group to twelve.

3. Boxes can be installed in two or more rows, but the postman's lock cannot be more than 66 inches from the floor.

4. A box must be provided for the janitor at same location as all other boxes.

Standard Finish: Satin brass or black. Special commercial finishes \$1.25 net per gang.

List Prices

No. 393—Standard Mail Box..... \$8.50 per gang

No. 394—Equipped with push button in trim under each gang 9.00 per gang

No. 395 Push Button Plate Only

For use where mail boxes are in inner vestibule and push buttons are in outer vestibule. Dimensions vary with size and arrangement. **Standard Finish:** Satin brass.

12 Button Plate.....
Additional Buttons.....

List Price
\$12.00
1.00 each

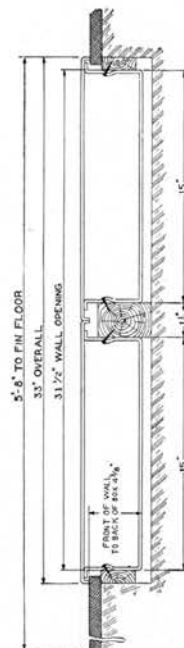
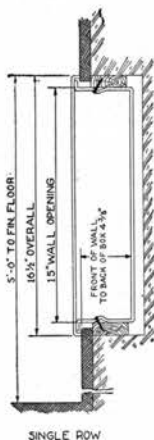


SINGLE ROW MOUNTING

No. of Boxes	Arranged		Wall Cut		Overall		Approx. Weight
	No. of Groups	Gangs per Group	Height (inch.)	Width (inch.)	Height (inch.)	Width (inch.)	
3	1	3	15	10 1/4	16 1/2	11 7/8	13 lbs.
4	1	4	15	13 1/4	16 1/2	15 1/4	16 "
5	1	5	15	17 1/4	16 1/2	18 3/8	18 "
6	1	6	15	20 3/8	16 1/2	22	23 "
7	1	7	15	24	16 1/2	25 3/8	26 "
8	1	8	15	27 3/8	16 1/2	28 3/4	29 "
9	1	9	15	30 3/8	16 1/2	32 1/8	32 "
10	1	10	15	34	16 1/2	35 1/8	35 "
11	1	11	15	37 3/8	16 1/2	38 3/8	38 "
12	1	12	15	40 3/4	16 1/2	42 1/4	48 "
13	(1 1/2)	6	15	45 3/4	16 1/2	47 1/4	49 "
14	(1 1/2)	7	15	49 1/8	16 1/2	50 3/8	52 "
15	(1 1/2)	8	15	52 1/8	16 1/2	54	55 "
16	(1 1/2)	9	15	55 3/8	16 1/2	57 3/8	58 "
17	(1 1/2)	10	15	59 1/8	16 1/2	60 3/8	61 "
18	(1 1/2)	11	15	62 1/8	16 1/2	64 1/4	64 "
19	(1 1/2)	12	15	65 3/8	16 1/2	67 3/8	67 "
20	(1 1/2)	13	15	69 1/4	16 1/2	71	70 "
21	(1 1/2)	14	15	72 3/8	16 1/2	74 3/8	73 "
22	(1 1/2)	15	15	76	16 1/2	77 3/4	76 "
23	(1 1/2)	16	15	79 3/8	16 1/2	81 1/8	86 "
24	(1 1/2)	17	15	82 3/4	16 1/2	84 1/2	96 "

DOUBLE ROW MOUNTING

No. of Boxes	Arranged		Wall Cut		Overall		Approx. Weight
	No. of Groups	Gangs per Group	Height (inch.)	Width (inch.)	Height (inch.)	Width (inch.)	
12	2	6	31 1/2	20 3/8	33	22	46 lbs.
14	2	7	31 1/2	24	33	25 3/8	52 "
16	2	8	31 1/2	27 3/8	33	28 3/4	58 "
18	2	9	31 1/2	30 3/8	33	32 1/8	64 "
20	2	10	31 1/2	34	33	35 1/8	70 "
22	2	11	31 1/2	37 3/8	33	38 3/8	76 "
24	2	12	31 1/2	40 3/4	33	42 1/4	96 "
26	(2 1/2)	6	31 1/2	45 3/4	33	47 1/4	98 "
28	(2 1/2)	7	31 1/2	49 1/8	33	50 3/8	104 "
30	(2 1/2)	8	31 1/2	52 1/8	33	54	110 "
32	(2 1/2)	9	31 1/2	55 3/8	33	57 3/8	116 "
34	(2 1/2)	10	31 1/2	59 1/8	33	60 3/8	122 "
36	(2 1/2)	11	31 1/2	62 1/8	33	64 1/4	128 "
38	(2 1/2)	12	31 1/2	65 3/8	33	67 3/8	134 "
40	(2 1/2)	13	31 1/2	69 1/4	33	71	140 "
42	(2 1/2)	14	31 1/2	72 3/8	33	74 3/8	146 "
44	(2 1/2)	15	31 1/2	76	33	77 3/4	152 "
46	(2 1/2)	16	31 1/2	79 3/8	33	81 1/8	172 "
48	(2 1/2)	17	31 1/2	82 3/4	33	84 1/2	192 "



VESTIBULE TELEPHONES

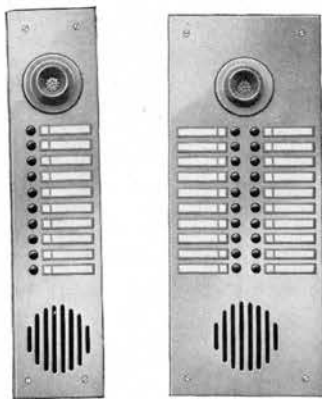
TELEPHONE and button plates for mounting as separate units alongside or apart from mail boxes. Flush mounting type with solid brass fronts and steel back boxes. Back boxes can be furnished separately for mounting in wall before plastering is done.

Where more than 20 buttons are required, unit consists of two or more plates (see styles below) mounted in a holding frame. This permits easy mounting, prevents buckling, and presents a very neat appearance. Individual plates are removable to permit easy access to wiring when necessary. The method of attaching frame to wall box is such that adjustment can be made where wall box has been set too far back in the wall.

No. 322—Cordless loud speaking type.

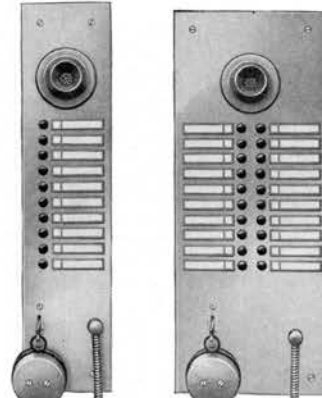
No. 321—Armored cord type.

Specify: Catalog number, number of apartment buttons, janitor's button if required and style number.



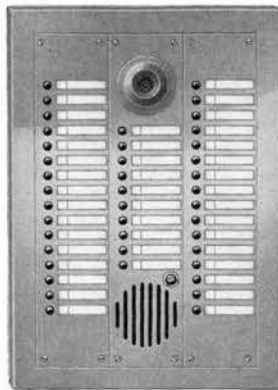
No. 322
Style A

No. 322
Style B

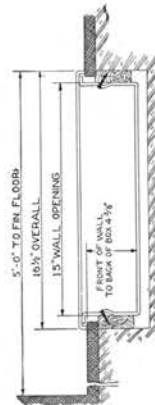


No. 321
Style A

No. 321
Style B



No. 322 Style C



1T010
APTS.
STYLE-A

11T020
APTS.
STYLE-B

21T050
APTS.
STYLE-C

51T060
APTS.
STYLE-D

61T090
APTS.
STYLE-E

91T0100
APTS.
STYLE-F

101T0140
APTS.
STYLE-G

Copyright, 1927, Edwards & Co., Inc.

Style No.	Overall		Wall Cut	
	Height (inches)	Width (inches)	Height (inches)	Width (inches)
A	16 1/2	4 1/2	15	*3 1/2
B	16 1/2	7	15	*6
C	16 1/2	11 3/8	15	*10 1/2
D	16 1/2	15 1/4	15	*13 3/8
E	16 1/2	18 3/8	15	*17 1/4
F	16 1/2	22	15	*20 3/8
G	16 1/2	28 3/4	15	*27 3/8

*Width given is for telephone unit only. If it is to be mounted immediately alongside mail boxes add this width to mail box wall cut plus 1 1/2 inches to allow for trim between mail box and telephone.

No. of Apts.	#322 Cordless Type	#321 Armored Cord Type	Approx. Weight	No. of Apts.	#322 Cordless Type	#321 Armored Cord Type	Approx. Weight	No. of Apts.	#322 Cordless Type	#321 Armored Cord Type	Approx. Weight
3	40.30	28.30	10 lbs.	16	54.60	42.60	16 lbs.	29	68.90	56.90	21 lbs.
4	41.40	29.40	10 "	17	55.70	43.70	17 "	30	70.00	58.00	21 "
5	42.50	30.50	11 "	18	56.80	44.80	17 "	31	71.10	59.10	22 "
6	43.60	31.60	11 "	19	57.90	45.90	18 "	32	72.20	60.20	22 "
7	44.70	32.70	12 "	20	59.00	47.00	18 "	33	73.30	61.30	22 "
8	45.80	33.80	12 "	21	60.10	48.10	19 "	34	74.40	62.40	22 "
9	46.90	34.90	13 "	22	61.20	49.20	19 "	35	75.50	63.50	23 "
10	48.00	36.00	13 "	23	62.30	50.30	20 "	36	76.60	64.60	23 "
11	49.10	37.10	14 "	24	63.40	51.40	20 "	37	77.70	65.70	23 "
12	50.20	38.20	14 "	25	64.50	52.50	20 "	38	78.80	66.80	23 "
13	51.30	39.30	15 "	26	65.60	53.60	20 "	39	79.90	67.90	24 "
14	52.40	40.40	15 "	27	66.70	54.70	21 "	40	81.00	69.00	24 "
15	53.50	41.50	16 "	28	67.80	55.80	21 "				

Over 40 apartments add list \$1.10 per button.
Standard finish: satin brass or black.
Other commercial finishes add per unit net \$2.00.

APARTMENT TELEPHONES



No. 3321



No. 3331



No. 3341

EDWARDS apartment telephones are furnished in surface or flush type. All cases are of steel, well proportioned and handsomely finished in dull black Duco, which will not scratch, chip or flake off. The design follows in every feature the standard of modern telephone practice; enclosed, double adjustment bells; bakelite terminal strips and hinged doors on both flush and surface types. The complete assembly is mounted on a plate which is easily taken from the case without dismounting the case from the wall.

Flush telephones having a hinged front are a distinct improvement over the old-fashioned plate type where four exposed screws held it to the backbox. The backboxes are steel with knockouts and provide ample adjustment for keeping the telephone plumb. The mounting is such that provision is also made to compensate for cases in tile construction where backbox is set too far forward.

Standard Finish: All telephones, Duco black. No charge for satin brass on flush telephones. Special commercial finishes \$.70 net.

Surface Type Telephones

Overall: 8" high, 6" wide, 2 $\frac{3}{4}$ " deep

Number of Buttons	For use with Armored Cord Vestibule Tel.	For use with Loud Speaking Vestibule Tel.	Approximate Weight	List Price
With Watchcase Receiver				
1	No. 3321	No. 3351	2 $\frac{1}{4}$ lbs.	\$13.70
2	No. 3322	No. 3352	2 $\frac{1}{4}$ lbs.	15.00
3	No. 3323	No. 3353	2 $\frac{1}{4}$ lbs.	16.30
With Long Hand Receiver				
1	No. 3331	No. 3361	3 $\frac{1}{2}$ lbs.	19.00
2	No. 3332	No. 3362	3 $\frac{1}{2}$ lbs.	20.30
3	No. 3333	No. 3363	3 $\frac{1}{2}$ lbs.	21.60

Flush Type Telephones

Overall: 8" high, 6" wide.

Wallcut: 7 $\frac{3}{8}$ " high, 5 $\frac{3}{8}$ " wide, 2 $\frac{3}{8}$ " deep.

The new, easy mounting wall box is of metal in two styles: plain for tile construction, and with mounting bracket and lath support for wood construction. The bracket is quickly and easily installed on the **face** of studding, which automatically locates wall box correctly. It allows the box to be mounted immediately next to studding or up to 1 $\frac{1}{2}$ " away from it. The box is reversible and may be mounted to left or right of studding. Knockouts in top, bottom and back.

Number of Buttons	For use with Armored Cord Vestibule Tel.	For use with Loud Speaking Vestibule Tel.	Approximate Weight	List Price
1	No. 3341	No. 3371	3 $\frac{3}{4}$ lbs.	\$13.70
2	No. 3342	No. 3372	3 $\frac{3}{4}$ lbs.	15.00
3	No. 3343	No. 3373	3 $\frac{3}{4}$ lbs.	16.30

Specify "tile construction" or "wood construction" wall box.



Wall Box for Wood Construction

Unless otherwise specified, push buttons for apartment telephones will be engraved as follows:

2 buttons Supt., Door.

3 buttons Supt., Front, Rear.

JANITOR'S AND TRADESMEN'S EQUIPMENT

Common Talking—One Vestibule Only

Janitor's Answering Telephone:

For use where janitor answers apartments and vestibule and operates door opener, but does not call apartments.

No. 3401—(System 20C)—For use with armored cord vestibule telephone. App. wt. 2¾ lbs. **List \$13.70**

No. 3402—(System 20L)—For use with cordless loud speaking vestibule telephone. App. wt. 2¾ lbs. **List \$20.00**

Janitor's Answering and Calling Telephone:

For use when janitor answers apartments and vestibule, operates door opener and also calls apartments.

No. 3411—(Systems 21C and 30C)—For use with armored cord vestibule telephone. 4 Button. **List \$20.00**

Add for each additional push button required **List 1.00**

App. wt. 6 lbs.

No. 3412—(Systems 21L and 30L)—For use with cordless loud speaking vestibule telephone. 4 Button. **List \$26.30**

Add for each additional push button required **List 1.00**

App. wt. 6 lbs.

Janitor's Answering and Calling Annunciator Telephone:

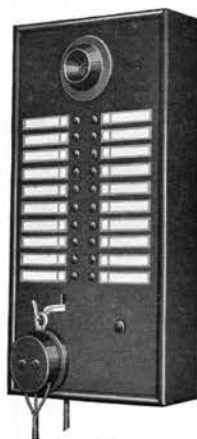
For use where janitor answers vestibule calls and answers apartments and operates door opener. Electrically reset clear vision drops register calls in janitor's absence.

No. 3801—(Systems 22C and 31C)—For use with armored cord vestibule telephone.

No. 3802—(Systems 22L and 31L)—For use with cordless loud speaking vestibule telephone.



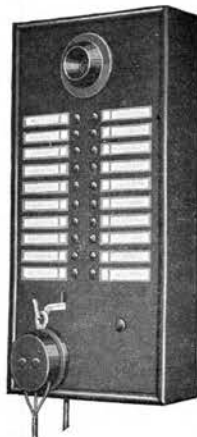
No. 3401



No. 3412



No. 3802



No. 3451

Number of Drops	Number of Rows	App. Weight	No. 3801	No. 3802
16	2	9 lbs.	\$130.00	\$138.00
20	2	10 lbs.	145.00	153.00
25	3	11 lbs.	170.00	178.00
30	3	12 lbs.	190.00	198.00
36	4	14 lbs.	218.00	226.00
42	4	16 lbs.	255.00	263.00
49	5	18 lbs.	290.00	298.00
56	5	20 lbs.	320.00	328.00
64	5	24 lbs.	360.00	368.00
72	5	29 lbs.	394.00	402.00
81	6	33 lbs.	436.00	444.00
90	6	40 lbs.	476.00	484.00
100	7	48 lbs.	520.00	528.00
Over 100 Drops, Add per Drop.....			5.50	8.00

Tradesmen's Calling Telephone:

With buttons for calling each apartment.

No. 3451—(System 31C)—For use with armored cord vestibule telephone. 4 Button. **List \$17.00**

Add for each additional push button required **List 1.00**

App. wt. 6 lbs.

No. 3452—(System 31L)—For use with cordless type loud speaking telephone. 4 Button. **List \$17.00**

Add for each additional push button required **List 1.00**

App. wt. 6 lbs.

JANITOR'S AND TRADESMEN'S TELEPHONE EQUIPMENT

Sectional Talking—Two or More Vestibules



No. 3821

Janitor's Answering Telephone:

For use where janitor answers apartments and each vestibule and operates each door opener, but does not call apartments. Origin of calls registered by an electrically reset drop for each section.

- No. 3811—(System 40C)—For use with armored cord vestibule telephone.
 2 section set—App. Wt. 9 lbs. List \$58.00
 Add for each additional section. List 12.00

- No. 3812—(System 40L)—For use with cordless loud speaking vestibule telephone.
 2 section set—App. Wt. 9 lbs. List \$64.00
 Add for each additional section. List 18.00

Janitor's Answering and Calling Telephone:

For use where janitor answers each vestibule, calls and answers apartments, and operates each door opener. Origin of calls registered by an electrically reset drop for each section.

- No. 3821—(Systems 41C, 43C)—For use with armored cord vestibule telephone.
 2 section set with 12 Apartment, and 2 Door Opener, Buttons—App. Wt. 10 lbs. List \$94.00
 Add for each additional section. List 20.00
 Add for each additional apartment push button. List 1.40

- No. 3822—(Systems 41L, 43L)—For use with cordless loud speaking vestibule telephone.
 2 section set with 12 apartment, and 2 door opener, buttons—App. Wt. 10 lbs. List \$100.00
 Add for each additional section. List 26.00
 Add for each additional apartment push button. List 1.40



No. 3831

Janitor's Answering and Calling Annunciator Telephone:

For use where janitor answers each vestibule, calls and answers apartments, and operates each door opener. Drop for each apartment and each vestibule registers calls during janitor's absence.

- No. 3831—(System 42C)—For use with armored cord vestibule telephone.
 2 section set for 12 apartments—App. Wt. 10 lbs. List \$140.00
 Add for each additional section. List 35.00
 Add for each additional apartment per section. List 5.00

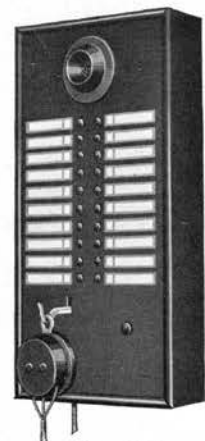
- No. 3832—(System 43L)—For use with cordless loud speaking vestibule telephone.
 2 section set for 12 apartments—App. Wt. 10 lbs. List \$150.00
 Add for each additional section. List 40.00
 Add for each additional apartment per section. List 5.00

Tradesmen's Calling Telephone:

With buttons for calling apartments in associated section.

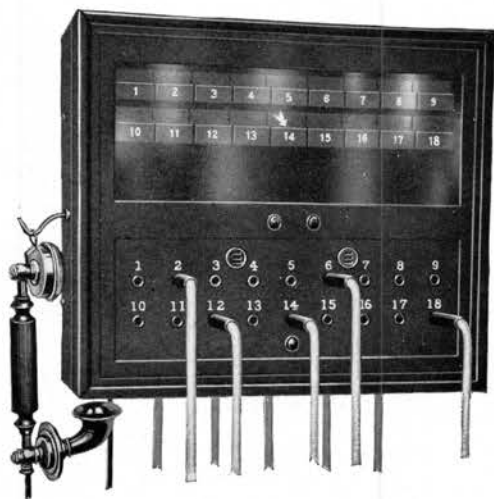
- No. 3451—(System 43C)—For use with armored cord vestibule telephone.
 4 button set—App. Wt. 6 lbs. List \$17.00
 Add for each additional apartment button. List 1.00

- No. 3452—(System 43L)—For use with cordless loud speaking vestibule telephone.
 4 button set—App. Wt. 6 lbs. List \$17.00
 Add for each additional apartment button. List 1.00



No. 3451

CENTRAL STATION SYSTEM FOR APARTMENTS, HOTELS, ETC.



No. 3890

SYSTEM 6 C

OUTLYING stations are equipped with push buttons to call central station. The central station is equipped with electrically reset arrow signals to register calls from outlying stations. Answering cord is plugged into numbered jack. Up to three cross connections between outlying stations can be arranged for by connecting cords. Supervisory signals can be furnished to show end of conversation. Central station is surface type, black finish. Wiring diagram on page 19.

No. 3890 Central Station Annunciator

Station Capacity	List Price	Station Capacity	List Price
16	\$144.00	56	\$292.00
20	162.00	64	357.00
25	180.00	72	387.00
30	198.00	81	427.00
36	220.00	90	459.00
42	241.00	100	501.00
50	270.00		



No. 325

For each additional 5 station capacity over 100 add **\$30.00**
 For each set cross connecting cords without supervisory signal..... add **10.00**
 For each set cross connecting cords with supervisory signal..... add **18.00**

Outlying Stations

Surface Type: Standard finish, black Duco.
 Overall dimensions: 8" high, 6" wide, 2 $\frac{3}{4}$ " deep.

No. 325 with watch case receiver..... List price **\$13.70**

No. 3253 with long hand receiver..... List price **19.00**

Flush type: Standard finishes, black Duco or satin brass.
 Overall dimensions: 8" high, 6" wide, 2 $\frac{3}{4}$ " deep.
 Wall cut dimensions: 7 $\frac{3}{8}$ " high, 5 $\frac{3}{8}$ " wide, 2 $\frac{3}{8}$ " deep.
 Backbox same as described on page 8.



No. 3251

No. 3251 with watch case receiver..... List price **\$13.70**

Wall boxes can be shipped separately for mounting in wall before plastering is done.

LAMP SWITCHBOARD SYSTEM FOR APARTMENTS, HOTELS, ETC.

SYSTEM 50

REMOVING receiver from hook automatically lights lamp in switchboard. Answering cord is plugged into numbered jack, which extinguishes lamp. As many conversations between stations may take place as desired. Regularly furnished with one set of cross connecting cords, listening and ringing key for each ten stations. Wiring diagram on page 19.

Flush Wall Switchboard No. 3851:

Designed for inconspicuous mounting in wall of entrance hall. Its neat appearance will harmonize with all architectural and decorative arrangements. Standard finish, black or mahogany.

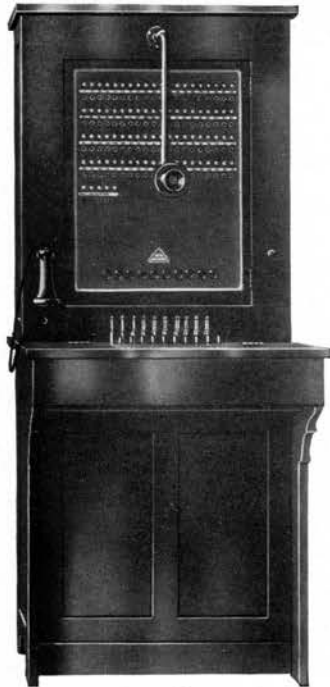
No. 3851

Cabinet Type Switchboard No. 3852:

Self-supporting, floor mounting type. Standard finish, oak or mahogany.

Desk Type Switchboard No. 3853:

Consists of switchboard unit built into standard flat top desk. Standard finish, oak or mahogany.



No. 3852

Station Capacity	No. 3851 Wall Type	No. 3852 Cabinet Type	No. 3853 Desk Type	Station Capacity	No. 3851 Wall Type	No. 3852 Cabinet Type	No. 3853 Desk Type
20	\$370.60			65	\$588.40	\$653.40	\$888.40
25	417.40	\$482.40	\$717.40	70	600.10	665.10	900.10
30	429.10	494.10	729.10	75	615.40	680.40	915.40
35	444.40	509.40	744.40	80	627.10	692.10	927.10
40	456.10	521.10	756.10	85	648.60	713.60	948.60
45	502.90	567.90	802.90	90	670.10	735.10	970.10
50	514.60	579.60	814.60	95	691.60	756.10	991.60
55	529.90	594.90	829.90	100	713.10	778.10	1013.10
60	541.60	606.60	841.60				

Prices include 1 pair cross connecting cords for each 10 station capacity.

For each additional 5 station capacity over 100 add.....List \$21.50

For each line over 800 ft. in length add for line signal relay.....List 10.80

Outlying Stations

Surface type: Standard finish, black Duco.
Overall dimensions: 8" high, 8" wide, 2 $\frac{3}{4}$ " deep.

List price

No. 326 with watch case receiver.....\$13.00

No. 3262 with long hand receiver..... 19.00



No. 326



No. 3261

Flush type: Standard finishes: black Duco or satin brass.

Overall dimensions: 8" high, 6" wide, 2 $\frac{3}{4}$ " deep.

Wall cut dimensions: 7 $\frac{3}{8}$ " high, 5 $\frac{3}{8}$ " wide, 2 $\frac{3}{8}$ " deep.

List price

No. 3261 with watch case receiver.....\$13.00

Back boxes same as described on page 8.

DROP SIGNAL SWITCHBOARD SYSTEM FOR APARTMENTS, HOTELS, ETC.

SYSTEM 51



No. 3872



No. 326



No. 3261

REMOVING receiver from hook automatically displays arrow signal in switchboard. Answering cord is plugged into numbered jack, which restores signal. As many conversations between stations may take place as desired. Regularly furnished with one set of cross connecting cords, listening and ringing key for each ten stations. Wiring diagram on page 19.

Flush Wall Switchboard No. 3871:

Designed for inconspicuous mounting in wall of entrance hall. Its neat appearance will harmonize with all architectural and decorative arrangements. Standard finish, black or mahogany. Same appearance as No. 3851, page 12.

Cabinet Type Switchboard No. 3872:

Self-supporting, floor mounting type. Standard finish, oak or mahogany.

Desk Type Switchboard No. 3873.

Consists of switchboard unit built into standard flat top desk. Standard finish, oak or mahogany.

Station Capacity	No. 3871 Wall Type	No. 3872 Cabinet Type	No. 3873 Desk Type	Station Capacity	No. 3871 Wall Type	No. 3872 Cabinet Type	No. 3873 Desk Type
20	\$302.00			65	\$751.90	\$816.90	\$1051.90
25	375.00	\$440.00	\$675.00	70	786.40	851.40	1086.40
30	409.00	474.00	709.00	75	820.10	885.10	1120.10
35	439.00	504.00	739.00	80	853.60	918.60	1153.60
40	459.60	524.60	759.60	85	893.60	954.20	1189.20
45	535.80	600.80	835.80	90	933.60	990.70	1225.70
50	580.60	645.60	880.60	95	973.60	1025.20	1260.20
55	613.60	678.60	913.60	100	1013.60	1059.70	1294.70
60	662.40	727.40	962.40				

Prices include 1 pair cross connecting cords for each 10 station capacity.

For each additional 5 station capacity over 100 add.....List \$40.00

For each line over 800 ft. in length add for line signal relayList 10.80

Outlying Stations

Surface type: Standard finish, black Duco.

Overall dimensions: 8" high, 6" wide, 2 $\frac{3}{4}$ " deep.

No. 326 with watch case receiver..... List price \$13.00

No. 3262 with long hand receiver..... List price 19.00

Flush type: Standard finishes, black Duco or satin brass.

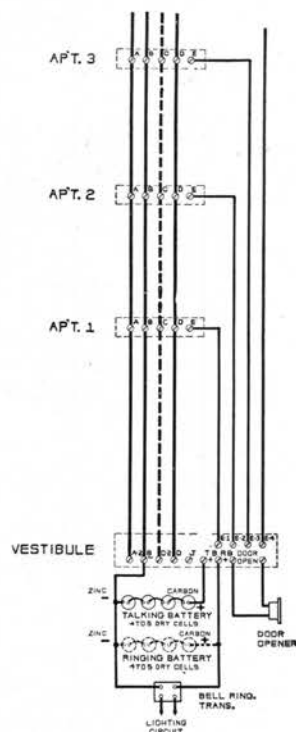
Overall dimensions: 8" high, 6" wide, 2 $\frac{3}{4}$ " deep.

Wall cut dimensions: 7 $\frac{3}{8}$ " high, 5 $\frac{3}{8}$ " wide, 2 $\frac{3}{8}$ " deep.

No. 3261 with watch case receiver..... List price \$13.00

Back boxes same as described on page 8.

SERVICE AND WIRING INFORMATION



SYSTEM 10C WITH ARMORED CORD VESTIBULE TELEPHONE SYSTEM 10L WITH LOUD SPEAKING CORDLESS VESTIBULE TELEPHONE

Vestibule and Apartments Only

Service:

- Common talking.
- Vestibule can call and talk to apartments.
- Apartments can reply to vestibule and operate door opener.

Wiring:

- 3 wires common to vestibule and all apartments, for talking.

Note—Omit wire shown by dotted line when armored cord vestibule telephone is used.

- 1 wire common to vestibule and all apartments, for door opener.
- 1 section or direct wire from vestibule to each apartment, for ringing.

Talking and Ringing Battery:

- 4 to 5 dry cells for talking.
- 1 No. 88 Edwards Transformer or 5 dry cells for ringing.

Door Opener:

- 1 No. 154 Edwards door opener.

SYSTEM 20C WITH ARMORED CORD VESTIBULE TELEPHONE SYSTEM 20L WITH LOUD SPEAKING CORDLESS VESTIBULE TELEPHONE

Vestibule, Apartments and Janitor's Answering Station

Service:

- Common talking.
- Vestibule can call and talk to apartments and janitor.
- Apartments can reply to vestibule, call and talk to janitor, and operate door opener.
- Janitor can reply to vestibule and apartments, and operate door opener.

Wiring:

- 3 wires common to vestibule, janitor and all apartments in order specified for talking.

Note—Omit wire shown by dotted line when armored cord vestibule telephone is used.

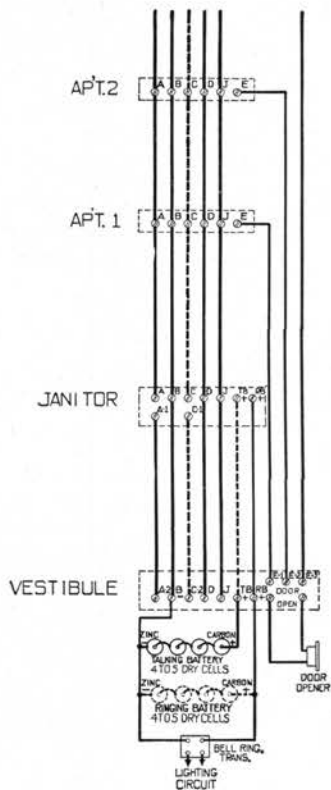
- 1 wire common to vestibule, apartments, and janitor for janitor's bell.
- 1 wire common to vestibule, janitor, and all apartments for door opener.
- 1 section or direct wire from vestibule to each apartment for ringing.
- 2 section or direct wires connecting vestibule and janitor for talking and ringing battery.

Talking and Ringing Battery:

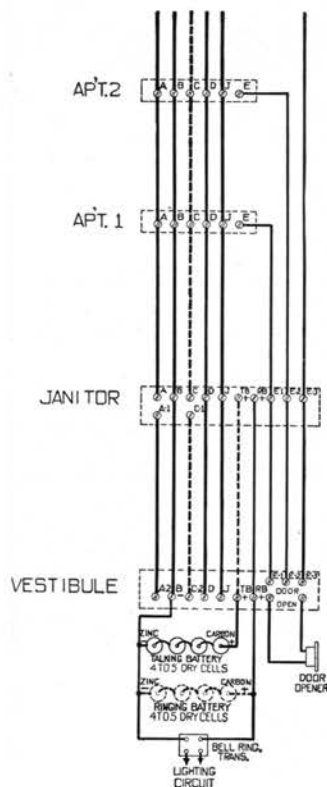
- 4 to 5 dry cells for talking.
- 1 No. 88 Edwards Transformer or 5 dry cells for ringing.

Door Opener:

- 1 No. 154 Edwards door opener.



SERVICE AND WIRING INFORMATION



SYSTEM 21C WITH ARMORED CORD VESTIBULE TELEPHONE SYSTEM 21L WITH LOUD SPEAKING CORDLESS VESTIBULE TELEPHONE

Vestibule, Apartments, and Janitor's Answering and Calling Station

Service:

- Common talking.
- Vestibule can call and talk to apartments and janitor.
- Apartments can reply to vestibule and janitor, call and talk to janitor, and operate door opener.
- Janitor can reply to vestibule and apartments, call and talk to apartments, and operate door opener.

Wiring:

3 wires common to vestibule, janitor and all apartments in order specified for talking.

Note—Omit wire shown by dotted line when armored cord vestibule telephone is used.

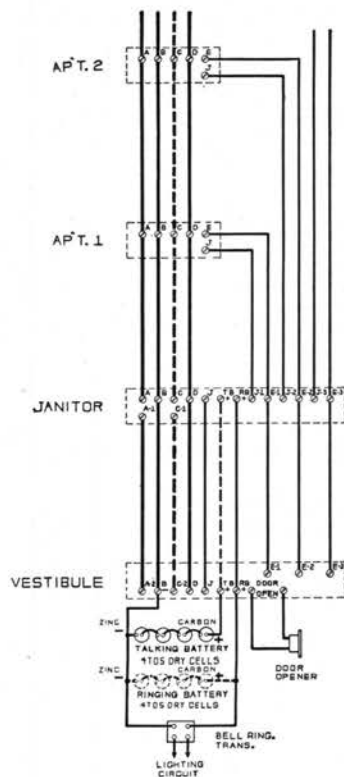
- 1 wire common to vestibule, janitor and all apartments for janitor's bell.
- 1 wire common to vestibule, janitor and all apartments for door opener.
- 1 section or direct wire connecting vestibule and janitor to each apartment for ringing.
- 2 section or direct wires connecting vestibule and janitor for talking and ringing battery.

Talking and Ringing Battery:

- 4 to 5 dry cells for talking.
- 1 No. 88 Edwards Transformer or 5 dry cells for ringing.

Door Opener:

- 1 No. 154 Edwards Door Opener.



SYSTEM 22C WITH ARMORED CORD VESTIBULE TELEPHONE SYSTEM 22L WITH LOUD SPEAKING CORDLESS VESTIBULE TELEPHONE

Vestibule, Apartments, and Janitor's Annunciator Telephone

Service:

- Common talking.
- Vestibule can call and talk to apartments and janitor.
- Apartments can reply to vestibule and janitor, call and talk to janitor, and operate door opener.
- Janitor can reply to vestibule and apartments, call and talk to apartments, and operate door opener.
- Calls from vestibule and apartments to janitor are registered on annunciator.

Wiring:

3 wires common to vestibule, janitor and all apartments in order specified for talking.

Note—Omit wire shown by dotted line when armored cord vestibule telephone is used.

- 1 wire common to vestibule, janitor and all apartments for door opener.
- 1 section or direct wire connecting vestibule and janitor to each apartment for ringing.
- 1 section or direct wire connecting vestibule and each apartment to janitor for janitor's annunciator.
- 2 section or direct wires from vestibule to janitor for talking and ringing battery.

Talking and Ringing Battery:

- 4 to 5 dry cells for talking.
- 1 No. 88 Edwards Transformer or 5 dry cells for ringing.

Door Opener:

- 1 No. 154 Edwards Door Opener.

SERVICE AND WIRING INFORMATION

SYSTEM 30C WITH ARMORED CORD VESTIBULE TELEPHONE SYSTEM 30L WITH LOUD SPEAKING CORDLESS VESTIBULE TELEPHONE

Vestibule, Apartments, Janitor and and Tradesmen

Service:

- Common talking.
- Vestibule can call and talk to apartments and janitor.
- Apartments can reply to vestibule, janitor and tradesmen, call and talk to janitor, and operate door opener.
- Janitor can reply to vestibule and apartments, call and talk to apartments, and operate door opener.
- Tradesmen can call and talk to apartments.

Wiring:

- 3 wires common to vestibule, tradesmen, janitor and all apartments in order specified for talking.

Note—Omit wire shown by dotted line when armored cord vestibule telephone is used.

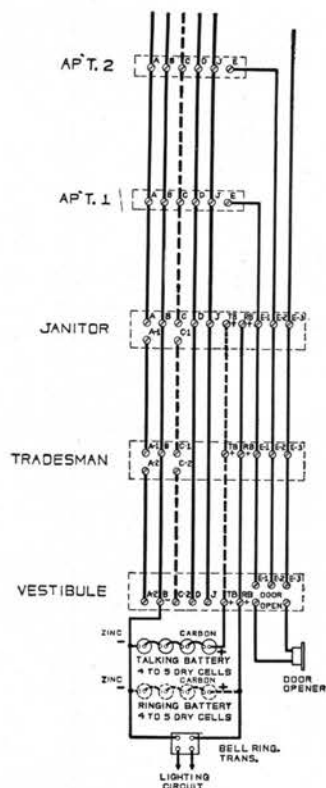
- 1 wire common to vestibule, janitor and all apartments for door opener.
- 1 wire common to vestibule, janitor and all apartments for janitor's bell.
- 1 section or direct wire connecting vestibule, tradesmen and janitor to all apartments for ringing.
- 2 section or direct wires from vestibule to tradesmen and janitor for talking and ringing battery.

Talking and Ringing Battery:

- 4 to 5 dry cells for talking.
- 1 No. 88 Edwards Transformer or 5 dry cells for ringing.

Door Opener:

- 1 No. 154 Edwards Door Opener.



SYSTEM 31C WITH ARMORED CORD VESTIBULE TELEPHONE SYSTEM 31L WITH LOUD SPEAKING CORDLESS VESTIBULE TELEPHONE

Vestibule, Apartments, Tradesmen, and Janitor's Annunciator Telephone

Service:

- Common talking.
- Vestibule can call and talk to apartments and janitor.
- Apartments can reply to vestibule, janitor and tradesmen, call and talk to janitor, and operate door opener.
- Janitor can reply to vestibule and apartments, call and talk to apartments and operate door opener.
- Calls from vestibule and apartments are registered on annunciator.
- Tradesmen can call and talk to apartments.

Wiring:

- 3 wires common to vestibule, tradesmen, janitor and all apartments in order specified for talking.

Note—Omit wire shown by dotted line when armored cord vestibule telephone is used.

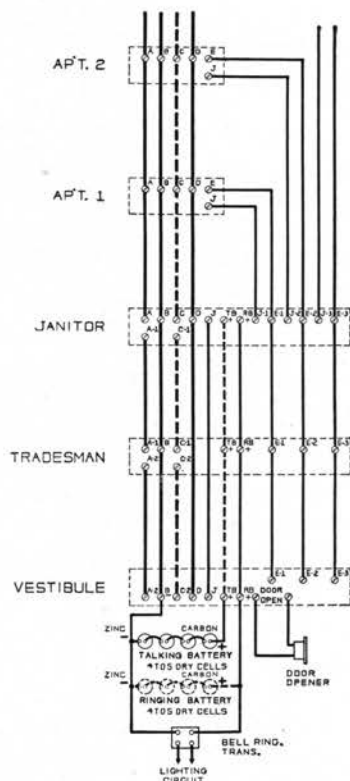
- 1 wire common to vestibule, janitor and all apartments for door opener.
- 1 section or direct wire connecting vestibule, tradesmen and janitor to each apartment for ringing.
- 1 section or direct wire from vestibule to janitor and each apartment to janitor, for janitor's annunciator.
- 2 section or direct wires from vestibule to tradesmen and janitor for talking and ringing battery.

Talking and Ringing Battery:

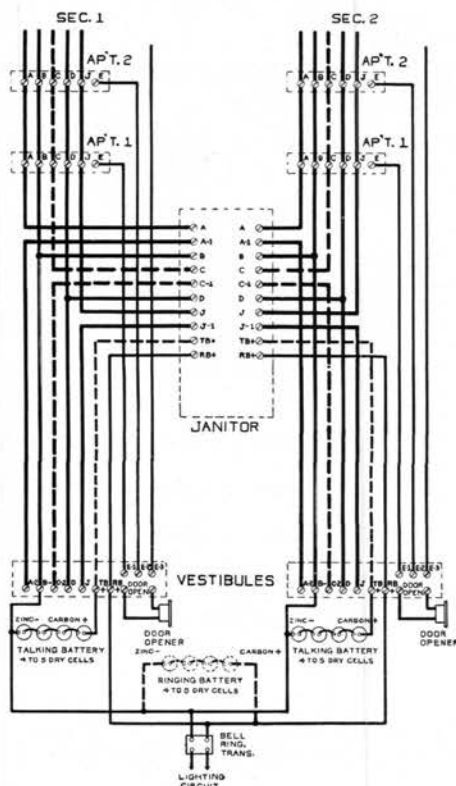
- 4 to 5 dry cells for talking.
- 1 No. 88 Edwards Transformer or 5 dry cells for ringing.

Door Opener:

- 1 No. 154 Edwards Door Opener.



SERVICE AND WIRING INFORMATION



SYSTEM 40C WITH ARMORED CORD VESTIBULE TELEPHONE SYSTEM 40L WITH LOUD SPEAKING CORDLESS VESTIBULE TELEPHONE

Two or More Vestibules and Associated Apartments with One Janitor's Answering Station.

Service:

Sectional talking.

Each vestibule can call and talk to associated apartments and janitor.

Apartments can reply to associated vestibule, call and talk to janitor and operate door opener.

Janitor can reply to each vestibule and apartments in each section and operate each door opener.

Wiring:

3 wires common to each vestibule, janitor and all apartments in associated section.

Note—Omit wire shown by dotted line when armored cord vestibule telephone is used.

1 wire common to vestibule, janitor and all apartments in each section for door opener.

1 wire common to vestibule, janitor and all apartments in each section for janitor's bell.

1 section or direct wire from vestibule to each apartment in associated section for ringing.

2 section or direct wires from each vestibule to janitor's telephone for ringing and talking battery.

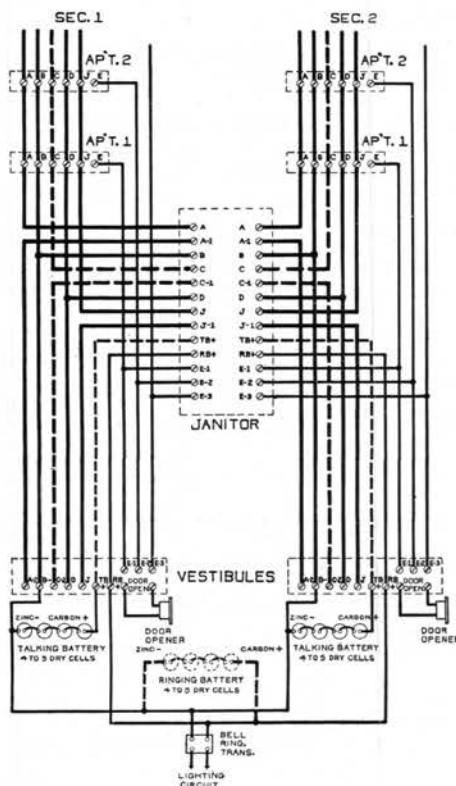
Talking and Ringing Battery:

1 set of 4 to 5 dry cells for each section for talking.

1 No. 88 Edwards Transformer or 5 dry cells for all sections for ringing.

Door Opener:

1 No. 154 Edwards Door Opener for each vestibule.



SYSTEM 41C WITH ARMORED CORD VESTIBULE TELEPHONE SYSTEM 41L WITH LOUD SPEAKING CORDLESS VESTIBULE TELEPHONE

Two or More Vestibules and Associated Apartments with One Janitor's Answering and Calling Station.

Service:

Sectional talking.

Each vestibule can call and talk to associated apartments and janitor.

Apartments can reply to associated vestibule and janitor, call and talk to janitor, and operate door opener.

Janitor can reply to each vestibule and apartments in any section, call and talk to apartments, and operate door opener.

Wiring:

3 wires common to vestibule, janitor and associated apartments in order specified.

Note—Omit wire shown by dotted line when armored cord vestibule telephone is used.

1 wire common to vestibule, janitor and all apartments in each section for door opener.

1 section or direct wire connecting vestibule and janitor to each apartment for ringing.

2 section or direct wires connecting each vestibule to janitor for talking and ringing battery.

Talking and Ringing Battery:

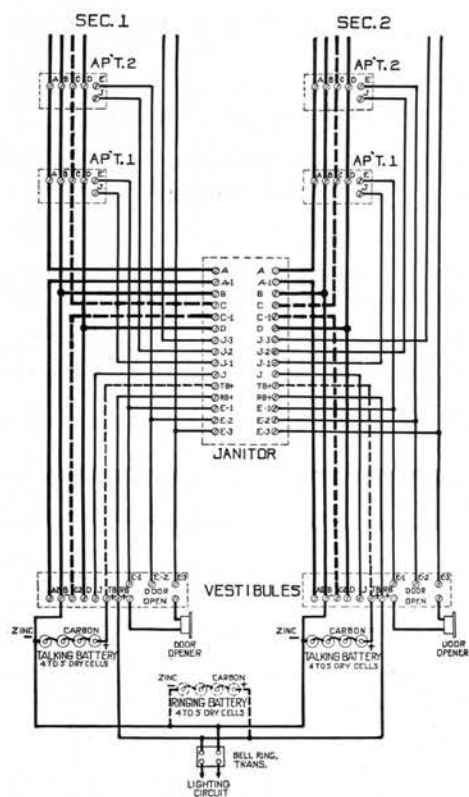
1 set of 4 to 5 dry cells for each section for talking.

1 No. 88 Edwards Transformer or 5 dry cells for all sections for ringing.

Door Opener:

1 No. 154 Edwards Door Opener for each vestibule.

SERVICE AND WIRING INFORMATION



SYSTEM 42C WITH ARMORED CORD VESTIBULE TELEPHONE SYSTEM 42L WITH LOUD SPEAKING CORDLESS VESTIBULE TELEPHONE

Two or More Vestibules and Associated Apartments with One Janitor's Answering and Calling Annunciator Station

Service:

- Sectional talking.
- Each vestibule can call and talk to associated apartments and janitor.
- Apartments can reply to associated vestibule and janitor, call and talk to janitor and operate door opener.
- Janitor can reply to each vestibule and apartments in any section, call and talk to apartments, and operate each door opener.
- Calls from each vestibule and each apartment are registered on janitor's annunciator.

Wiring:

- 3 wires common to each vestibule, janitor and associated apartments for talking.

Note—Omit wire shown by dotted line when armored cord vestibule telephone is used.

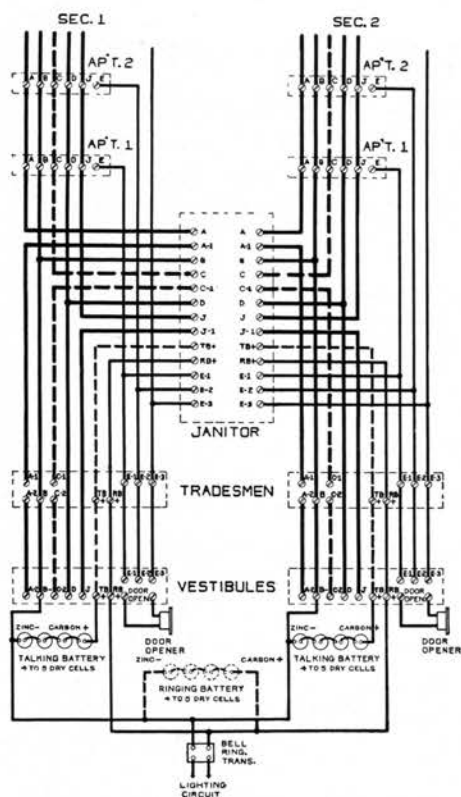
- 1 wire common to each vestibule, janitor and associated apartments for door opener.
- 1 section or direct wire from vestibule to janitor and each associated apartment for ringing.
- 1 section or direct wire from each vestibule and each apartment to janitor for annunciator.
- 2 section or direct wires from each vestibule to janitor for talking and ringing battery.

Talking and Ringing Battery:

- 1 set of 4 to 5 dry cells for each section for talking.
- 1 No. 88 Edwards Transformer or 5 dry cells for all sections for ringing.

Door Opener:

- 1 No. 154 Edwards Door Opener for each vestibule.



SYSTEM 43C WITH ARMORED CORD VESTIBULE TELEPHONE SYSTEM 43L WITH LOUD SPEAKING CORDLESS VESTIBULE TELEPHONE

Two or More Vestibules and Associated Apartments with Tradesmen's Telephone for Each Section and One Janitor's Calling and Answering Station for All Sections

Service:

- Sectional talking.
- Each vestibule can call and talk to associated apartments and janitor.
- Apartments can reply to associated vestibule, tradesmen and janitor, call and talk to janitor and operate door opener.
- Tradesmen can call and talk to apartments in associated section.
- Janitor can reply to each vestibule and apartments in any section, call and talk to apartments and operate each door opener.

Wiring:

- 3 wires common to vestibule, tradesmen, janitor and all apartments in order specified.

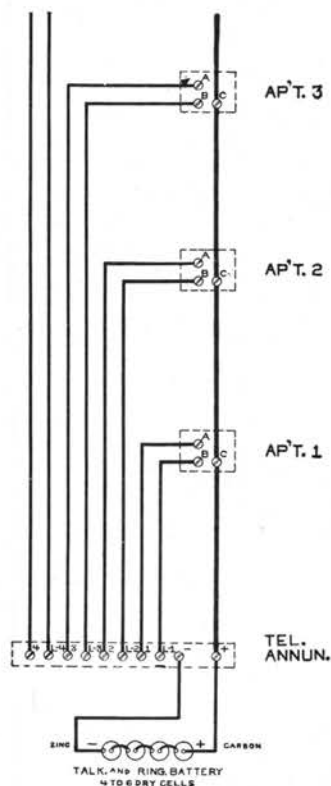
Note—Omit wire shown by dotted line when armored cord vestibule telephone is used.

- 1 wire common to vestibule, janitor and associated apartments for door opener.
- 1 wire common to vestibule, janitor and apartments in each section for janitor's bell.
- 1 section or direct wire connecting vestibule, janitor and tradesmen to each apartment in each section for ringing.
- 2 section or direct wires from vestibule to tradesmen and janitor for talking and ringing battery.

Talking and Ringing Battery:

- 1 set of 4 to 5 dry cells for each section for talking.
- 1 No. 88 Edwards Transformer or 5 dry cells for all sections for ringing.
- 1 No. 154 Edwards Door Opener for each vestibule.

SERVICE AND WIRING INFORMATION



SYSTEM 6C

SELECTIVE RINGING, SELECTIVE TALKING

Entrance Hall or Lobby, Apartments, Janitor, Laundry, etc.

Service:

Entrance hall or desk can call and talk to any apartment or sub-station.
Apartments can call entrance hall only.

Apartments or sub-stations can be connected together by operator in entrance hall.

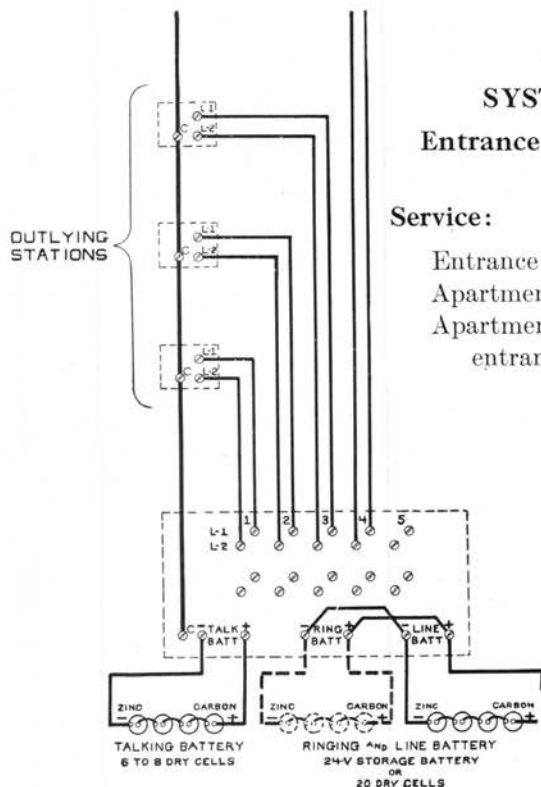
Wiring:

2 section or direct wires from annunciator switchboard to each apartment or sub-station.

1 wire common from annunciator switchboard to all apartments or sub-stations.

Talking and Ringing Battery:

1 set of 4 to 6 dry cells for ringing and talking.



SYSTEM 50 WITH LAMP SWITCHBOARD

SYSTEM 51 WITH DROP SIGNAL SWITCHBOARD

Entrance Hall or Lobby, Apartments, Janitor, Laundry, etc.

Service:

Entrance hall or desk can call and talk to any apartment or sub-station.
Apartments can call entrance hall only.

Apartments or sub-stations can be connected together by operator in entrance hall.

Wiring:

2 section or direct wires from switchboard to each apartment or sub-station.

1 wire connected common from switchboard to all apartments or sub-stations.

Talking and Ringing Battery:

1 or more sets of 18 dry cells or 24 volt storage battery for ringing and talking.

Architect's Specifications

GENERAL:

The contractor shall furnish and install an Edwards Telephone System No. (See Index) providing service between (Specify service rendered by system chosen).

The equipment shall be located as shown on plans, all suite telephones to be located so transmitter is approximately 4' 10" from floor line. Mail boxes to be located so postman's lock is not more than 66" from floor line.

The following equipment shall be furnished and installed:

- | | |
|-------------|---|
| Vestibule: | (Specify type and style of mail box and vestibule telephone or the combination of both as shown on pages 3 to 7. Specify also "Edwards No. 154 Door Opener" if required.) |
| Apartments: | (Specify catalog number of telephones as shown on page 8.) |
| Janitor: | (Specify catalog number of telephone or telephone annunciator applicable to system as shown on pages 9 and 10.) |
| Tradesmen: | (Specify catalog number of telephone as shown on pages 9 and 10.) |

WIRING:

The system shall be wired in strict accordance with the manufacturer's wiring diagram, providing the necessary conductors for the service specified above.

Wire shall be rubber covered or triple braid weatherproof of not smaller than No. 18 B.S. gauge.

All joints in wiring, except under screw terminals, shall be soldered and carefully taped. Where wire is carried through plastered walls, it shall be carefully protected against corrosion or abrasion.

Before apparatus is installed, all wiring shall be tested and cleared of grounds.

CURRENT SUPPLY:

Sufficient dry cells for the talking circuits shall be installed in a suitable battery box located in a cool, dry place. An Edwards No. 88 Transformer shall be installed for all ringing circuits. (Note—If alternating current is not available, specify "sufficient dry cells for both talking and ringing circuits.")

EDWARDS^{and} COMPANY INC.

INTERCOMMUNICATING TELEPHONE SYSTEMS

Bulletin No. 12B

July 1, 1927



PRIVATE TELEPHONE SYSTEMS FOR FACTORIES,
HOTELS, HOSPITALS, RESIDENCES, ETC.

For Apartment House Systems see Bulletin 12A



NEW YORK, N. Y.

ATLANTA, GA.
BALTIMORE, MD.
BOSTON, MASS.
CHICAGO, ILL.

COLUMBUS, OHIO
DALLAS, TEXAS
DENVER, COLO.
DETROIT, MICH.

KANSAS CITY, MO.
LOS ANGELES, CAL.
NEW ORLEANS, LA.

PHILADELPHIA, PA.
PITTSBURGH, PA.
PORTLAND, ORE.
SAN FRANCISCO, CAL.

INDEX TO EDWARDS Intercommunicating Telephone Systems

*Service information, wiring diagrams, etc.
will be found on pages indicated*

	Page
PRIVATE LINE TELEPHONES, 2 Stations Only	
Edwards Two Party Package. Two wall telephones in carton with instructions for installation. Two wire system with battery at each station.....	3
CODE CALLING COMMON TALKING SYSTEM No. 7, 2 to 6 Stations	
A private line system for operation on three wires connecting all stations. Battery at one end of line only.....	4-5
SELECTIVE RINGING COMMON TALKING SYSTEM No. 4, 4 to 13 Stations	
An intercommunicating system suitable for use where conversations between stations may be limited to one at a time.....	6-7
SELECTIVE RINGING SELECTIVE TALKING SYSTEM No. 5, 12 to 22 Stations	
An intercommunicating system providing means for several conversations to take place simultaneously.....	8-9
CENTRAL STATION SYSTEM No. 6A	
A common talking system of central and outlying telephones without annunciator at master station.....	10-13
CENTRAL STATION SYSTEM No. 6B	
A common talking system of central and outlying telephones with annunciator at master station to record calls.....	10-13
CENTRAL STATION SYSTEM No. 6C	
A selective talking system of central and outlying telephones with annunciator telephone at master station. Central station can be equipped with connecting cords for intercommunication between outlying stations.....	14-15
PRIVATE EXCHANGE SWITCHBOARD SYSTEMS	
Lamp signal switchboards and telephones for central battery systems of 20 to 200 stations.....	16-18

EDWARDS

Two Party Package

A standard package outfit consisting of two wall telephones packed in a carton with complete instructions for installing.



No. 339



No. 339

Service:

For use where two stations only are required and where the total distance between stations does not exceed 3000 feet.

Either station may call the other by pressing a push button. The called station responds by removing the receiver from the hook and talking in the usual manner.

No. 339 Two Party Package

List Price \$26.70

App. weight 9 lbs.

Wiring and Battery Requirements:

For lines up to 750 feet long a battery of 3 dry cells connected in series at each station is sufficient to supply current for ringing and talking.

On lines over 750 feet long, additional cells of battery are required to insure satisfactory ringing.

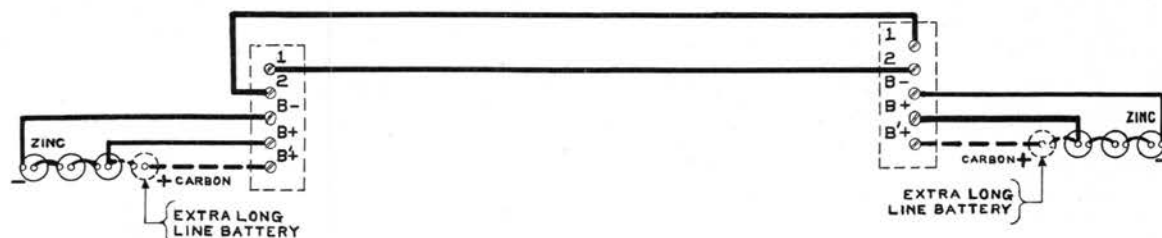
The number of cells of battery and size of wire to suit various lengths of line up to 3000 feet will be found in the following table.

Distance Between Stations up to	750 Feet	1000 Feet	1500 Feet	2000 Feet	2500 Feet	3000 Feet
Number B & S Gauge Copper Wire	18	18	16	16	14	14
No. of Dry Cells at each station	3	4	4	4	4	4

For interior exposed wiring in dry locations, use braided rubber covered wire attached to baseboard, wainscoting, or picture moulding by means of Blake insulated staples. For wiring in conduit or in damp locations, use triple braid weatherproof wire.

Where wiring is to be exposed to the weather, install on porcelain knobs or glass insulators. Where wiring enters a building, install in a porcelain tube set at an angle so that rain water cannot enter the tube.

Diagram of Connections



EDWARDS

Code Calling, Common Talking

System No. 7

A private line system of two to six stations with centralized battery. All telephones are connected to a common ringing and talking circuit. Only one conversation may be carried on at a time.

Service:

Pressing the button of any telephone rings all stations at the same time. The particular station wanted may be indicated by a prearranged code of

signals: two rings for Station No. 2, three rings for Station No. 3, etc. Where more than six stations are required or calls between stations are frequent, the use of a selective ringing system as described on page 6 is recommended.

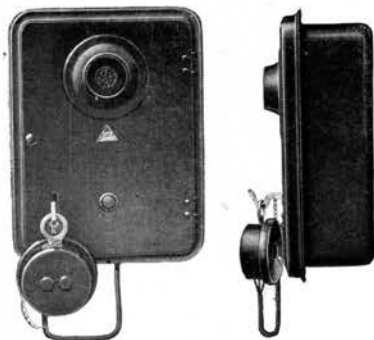


No. 3390

Surface Type Wall Telephones:

No. 3390—A neat, steel case telephone with hinged door, finished in Duco black. Equipped with watchcase receiver, raised metal mouthpiece and enclosed bell. Overall dimensions: 8" high, 6" wide, 2 $\frac{3}{4}$ " deep. Weight 4 lbs..

List \$13.70



No. 3391

Flush Type Wall Telephones:

No. 3391—Steel case with hinged door and detachable steel back box. Equipped with watchcase receiver, raised metal mouthpiece, and enclosed bell. A unique feature of design in the housing permits alignment of the set where back boxes are set out of plumb or too far forward in wall. Overall dimensions: 8" high, 6" wide. Wallcut dimensions: 7 $\frac{3}{8}$ " high, 5 $\frac{3}{8}$ " wide, 2 $\frac{3}{8}$ " deep. Weight 4 $\frac{1}{2}$ lbs.

List \$13.70



No. 373

Desk Type Telephones:

No. 373 —Desk stand with adjustable transmitter, long hand receiver, and push button in base. Connected by a 6 foot brown cord to a metal covered terminal box enclosing a buzzer and terminal strip. Finished in Duco black. Weight 5 lbs..

List \$27.00

EDWARDS

Code Calling, Common Talking System No. 7—Continued



No. 374

Hand Set Telephone:

No. 374 —Hand microphone with talking key in handle attached by 3 feet of brown cord to a metal covered terminal box enclosing buzzer and terminal strip. Box is provided with a hook to support the hand set when not in use. Finished in Duco black. Weight 4 lbs.

List \$21.50



No. 51H
Retardation Coil

Retardation Coil:

No. 51H—One required for each system to regulate the flow of current in the talking circuit.

List \$2.53

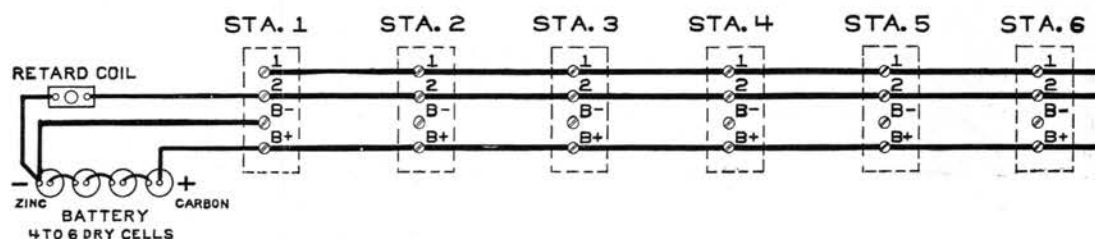
Wiring and Battery Requirements

This system requires a total of 3 wires connected common to all stations installed. Select the size of wire according to the length of line as follows:

For lines up to 750 feet long.	No. 18 B & S Copper Wire
“ “ from 750 to 1250 feet long.	No. 16 “ “ “
“ “ “ 1250 to 1500 “ “	No. 14 “ “ “

A battery of 3 to 5 dry cells connected in series is sufficient to supply current for ringing and talking. Install batteries in a battery box and locate in a cool, dry place.

Diagram of Connections



EDWARDS

Selective Ringing, Common Talking

System No. 4

An intercommunicating telephone system of 4 to 12 stations suitable for use where conversations between stations may be limited to one at a time.

Service

Pressing the button opposite the name of the station desired rings that station only. Any station may ring any other station, but one conversation only may take place at a time.



No. 360

Surface Wall Telephone:

No. 360—A compact, hinged case wall telephone with enclosed bell, watchcase receiver and raised metal mouthpiece. Finished in Duco black.

Cat. No.	No. of Buttons	Height (inches)	Width (inches)	Depth (inches)	Weight	List Price
360-4	4	8	6	2 $\frac{3}{4}$	4 lbs.	\$20.00
360-8	8	8	6	2 $\frac{3}{4}$	4 $\frac{1}{2}$ lbs.	24.00
360-12	12	11 $\frac{1}{4}$	7 $\frac{1}{2}$	3 $\frac{1}{4}$	5 $\frac{1}{2}$ lbs.	27.50



No. 3601

Flush Wall Telephones:

No. 3601—A metal case wall telephone with steel back box. Equipped with enclosed bell, watchcase receiver, and raised metal mouthpiece. Finished in Duco black.

Cat. No.	No. of Buttons	Overall		Wall Cut			Weight	List Price
		Height (inches)	Width (inches)	Height (inches)	Width (inches)	Depth (inches)		
3601-4	4	8	6	7 $\frac{3}{8}$	5 $\frac{3}{8}$	2 $\frac{3}{8}$	4 lbs.	\$25.00
3601-8	8	8	6	7 $\frac{3}{8}$	5 $\frac{3}{8}$	2 $\frac{3}{8}$	4 $\frac{1}{2}$ lbs.	30.00
3601-12	12	12	7	10 $\frac{1}{2}$	6	3 $\frac{1}{2}$	5 $\frac{1}{2}$ lbs.	35.00

Desk Telephones:

No. 362—Desk stand with buttons in base, equipped with adjustable transmitter and long hand receiver. Connected with 6 feet of brown cord to a metal covered terminal box enclosing bell and terminal strip. Finished in Duco black.



No. 362

Cat. No.	No. of Buttons	Weight	List Price
362-4	4	4 $\frac{1}{2}$ lbs.	\$36.00
362-8	8	5 lbs.	42.00

EDWARDS

Selective Ringing, Common Talking

System No. 4—Continued



No. 364

Hand Set Telephones:

No. 364—Hand microphone with 3 feet of brown cord and push button block with 6 feet of brown cord, connected to a metal covered terminal box enclosing bell and terminal strip. Finished in Duco black.

Cat. No.	No. of Buttons	Weight	List Price
364-4	4	4 lbs.	\$26.00
364-8	8	4½ lbs.	29.50
364-12	12	5 lbs.	33.00



No. 365

No. 365—Consists of new style hand microphone and cradle stand with buttons in base. Connected by 6 feet of brown cord to a metal covered terminal box enclosing bell and terminal strip. Finished in Duco black.

Cat. No.	No. of Buttons	Weight	List Price
365-4	4	5 lbs.	\$40.00
365-8	8	5½ lbs.	46.60

Retardation Coil:

No. 51H—One required in each system to regulate the flow of current in the talking circuit..... **List \$2.53**

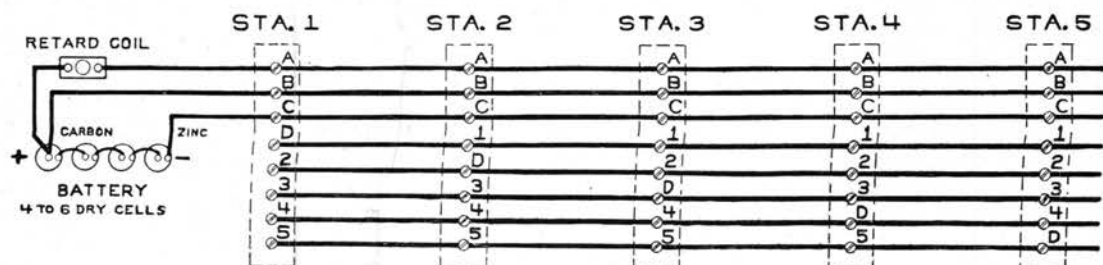
Wiring and Battery Requirements

This system requires as many wires connected to all stations as there are telephones installed, and 3 additional wires for battery feed and talking circuits. For example, a 5 station system would require a total of 8 wires. For convenience in installing, we

recommend the use of standard color code telephone cable described on page 19.

For operation of this system a battery of 3 to 5 dry cells is sufficient to furnish current for ringing and talking.

Diagram of Connections



EDWARDS

Selective Ringing, Selective Talking System No. 5

An intercommunicating telephone system of 12 to 22 stations, providing means for several conversations to take place simultaneously.



No. 350

Service

Pressing the button opposite the name of the station desired rings that station only. The station called replies by pressing white button and talking in usual manner. As many conversations can take place at the same time as there are pairs of telephones installed.

Wall Telephones:

No. 350—Surface mounting type. Equipped with long hand receiver and flush transmitter with raised mouthpiece.

Cat. No.	No. of Buttons	Height (inches)	Width (inches)	Depth (inches)	Weight	List Price
350-12	12	12 $\frac{5}{8}$	9 $\frac{5}{8}$	4 $\frac{7}{8}$	7 $\frac{1}{2}$ lbs.	\$44.00
350-22	22	12 $\frac{5}{8}$	9 $\frac{5}{8}$	4 $\frac{7}{8}$	8 $\frac{1}{2}$ lbs.	66.00

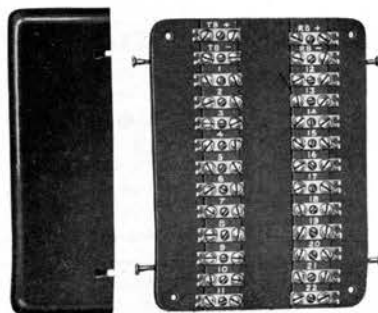


No. 354

Desk Telephones:

No. 354—Desk stand with adjustable transmitter and long hand receiver. Connected by 6 feet of brown cord to button box with enclosed bell and terminal strip. Finished in Duco black.

Cat. No.	No. of Buttons	Dimensions of Key Box			Weight	List Price
		Length (inches)	Width (inches)	Depth (inches)		
354-12	12	6 $\frac{2}{16}$	5 $\frac{3}{4}$	2 $\frac{3}{4}$	8 $\frac{1}{2}$ lbs.	\$52.00
354-22	22	12 $\frac{3}{16}$	5 $\frac{3}{4}$	2 $\frac{3}{4}$	9 $\frac{1}{2}$ lbs.	72.00



No. 390

Junction Box:

No. 390—For use where two or more sections of cable are connected or a branch taken off a main cable. Equipped with screw type terminals and metal cover.

Cat. No.	No. of Terminals	Length (inches)	Width (inches)	Depth (inches)	Weight	List Price
390-12	28	12	6	2 $\frac{1}{2}$	3 lbs.	\$5.60
390-22	48	16	6	2 $\frac{1}{2}$	4 lbs.	7.60

EDWARDS

Selective Ringing, Selective Talking

System No. 5—Continued

Wiring and Battery Requirements

All telephones for System No. 5 are wired for use on Full Metallic circuits requiring a cable connecting all stations having as many pairs of No. 22 B. & S. gauge wires as there are telephones in the system and 2 pairs of No. 18 B. & S. wires for Talking and Ringing Battery.

Special cable for this purpose can be furnished with braided or lead sheath covering in which each conductor may be readily identified by the color of the insulating braid.

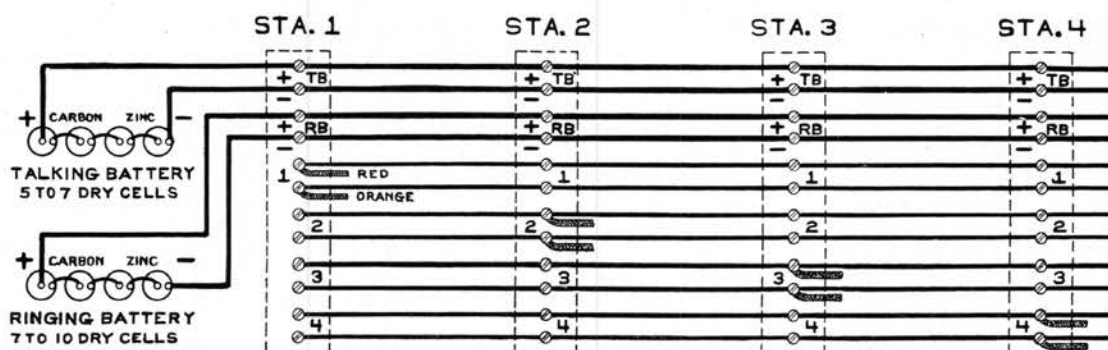
Braided covered cable is suitable for use for installation in dry locations only. For wiring in conduit or in damp places, lead covered cable should be used throughout. A full description of both types of cable will be found on page 19.

Where two or more lengths of cable are to be connected or a branch is to be taken off a main cable, the use of Junction boxes is recommended. The latter are provided with screw terminals which eliminate all splicing of wires, and facilitate testing.

Two separate sets of dry cell battery are required for the operation of this system, one set of 7 dry cells for talking, and a second set of 7 to 10 dry cells for ringing depending upon the total length of line. For systems having less than 1000 feet of cable between stations farthest apart, 7 cells will be sufficient. For distances up to 3000 feet, the number of cells of ringing battery should be increased to a total of not more than 10 cells in order to compensate for the drop in voltage due to the added line resistance.

Install batteries in a suitable battery box and locate in a cool dry place.

Diagram of Connections



EDWARDS

Central Station Systems 6A and 6B

Common Talking

A system of central and outlying telephones particularly adapted for use in schools, banks, hotels, etc., where the majority of conversations emanate from a central station.

Service

The central or master station can selectively call any of the outlying stations. Outlying stations can call the master station only. When desired the outlying stations may talk to each other by first calling the central station. The latter will then call the station required. Only one conversation may be held on the system at a time. System 6B is equipped with annunciator to register calls when central is unattended.

System 6A without annunciator at central station.

System 6B with annunciator at central station.



No. 3610



No. 371



No. 372

Central Station Telephones

No. 3610—Surface wall type with hinged door, long hand receiver, enclosed bell and raised metal mouthpiece. Finished in Duco black.

Cat. No.	No. of Buttons	Height (inches)	Width (inches)	Depth (inches)	Weight	List Price
3610-4	4	8	6	2 $\frac{3}{4}$	4 lbs.	\$20.00
3610-8	8	8	6	2 $\frac{3}{4}$	4 $\frac{1}{2}$ lbs.	24.00
3610-12	12	10 $\frac{1}{2}$	7	3 $\frac{1}{2}$	5 lbs.	28.00

Add for each additional 4 buttons..... **\$3.50 List**

No. 371—Desk Telephone with buttons in base. Consists of desk stand with adjustable transmitter and long hand receiver. Connected by 6 feet of brown cord to a metal covered terminal block enclosing bell and terminal strip. Finished in Duco black. Made in following sizes only.

Cat. No.	No. of Buttons	Weight	List Price
371-4	4	4 lbs.	\$36.00
371-8	8	4 $\frac{1}{2}$ lbs.	42.00

No. 372—Desk Telephone with buttons in pad. Consists of desk stand with adjustable transmitter and long hand receiver, connected by 6 feet of brown cord to a directory push button block. Buzzer concealed in base of desk stand. Finished in Duco black.

Cat. No.	No. of Buttons	Weight	List Price
372-4	4	4 lbs.	\$33.60
372-8	8	4 $\frac{1}{2}$ lbs.	36.00
372-12	12	4 $\frac{1}{2}$ lbs.	39.60
372-16	16	5 lbs.	43.20
372-20	20	5 $\frac{1}{2}$ lbs.	46.80

Add for each additional 4 buttons..... **\$2.80 List**
Price does not include flexible cable to connect button block to wall box.

EDWARDS Central Station Systems 6A and 6B

Continued

Common Talking

Central Station Telephones



No. 378

No. 378—Hand set telephone with buttons in base. Consists of hand set telephone and cradle stand with buttons in base. Connected by 6 feet of brown cord to a metal covered terminal block enclosing bell and terminal strip. Finished in Duco black.

Cat. No.	No. of Buttons	Weight	List Price
378-4	4	5 lbs.	\$40.00
378-8	8	5½ lbs.	55.00



No. 376

No. 376—Hand set telephone with buttons in pad. Consists of hand set telephone and cradle stand. Connected by 6 feet of cord to a directory push button block. Buzzer concealed in base of stand. Finished in Duco black.

Cat. No.	No. of Buttons	Weight	List Price
376-4	4	5 lbs.	\$36.60
376-8	8	5 lbs.	39.00
376-12	12	5¼ lbs.	42.60
376-16	16	5¼ lbs.	46.20
376-20	20	5½ lbs.	49.80

Add for each additional 4 buttons..... **\$3.50 List**
Price does not include flexible cable to connect button block to wall box.

Central Station Annunciator Type



No. 379

No. 379—Desk stand with adjustable transmitter and long hand receiver and directory push button block. Equipped with 6 feet of brown cord connected to a metal covered terminal block enclosing bell and terminal strip. Annunciator is of electrically reset type with clear vision arrow type signals. When reset, signals drop out of sight behind name card.

Prices are for complete outfit, telephone, annunciator, ringer box, and desk push.

Cat. No.	Station Capacity	App. Weight	List Price
379-12	12	15 lbs.	\$115.00
379-16	16	16 lbs.	142.00
379-20	20	18 lbs.	170.00
379-25	25	20 lbs.	206.00
379-30	30	22 lbs.	246.00

WIRING INFORMATION ON PAGE 13

EDWARDS Central Station Systems 6A and 6B

Continued

Common Talking

Outlying Station Telephones

Surface Type:

No. 3380—Steel case with hinged door, finished in Duco black. Equipped with watchcase receiver, raised metal mouthpiece and enclosed bell.

Cat. No.	Height (inches)	Width (inches)	Depth (inches)	Weight	List Price
3380	8	6	2 $\frac{3}{4}$	4 lbs.	\$13.70

No. 3382—Steel case with hinged door finished in Duco black. Equipped with long hand receiver, raised metal mouthpiece, and enclosed bell.

Cat. No.	Height (inches)	Width (inches)	Depth (inches)	Weight	List Price
3382	8	6	2 $\frac{3}{4}$	4 $\frac{1}{4}$ lbs.	\$19.00

Flush Type:

No. 3381—Steel case with hinged door and detachable steel back box. Equipped with watchcase receiver, raised metal mouthpiece, and enclosed bell. A unique feature of design in the housing permits alignment of the set where back boxes are out of plumb or too far forward. Finished in Duco black. Overall dimensions: 8" high, 6" wide, 2 $\frac{3}{4}$ " deep. Wallcut dimensions: 7 $\frac{3}{8}$ " high, 5 $\frac{3}{8}$ " wide, 2 $\frac{3}{8}$ " deep. App. weight 4 $\frac{3}{4}$ lbs.

List \$13.70

Desk Type:

No. 375—Desk stand with adjustable transmitter, long hand receiver and single button in base. Connected by 6 feet of cord to a metal covered terminal box enclosing buzzer and terminal strip. Finished in Duco black. App. weight 5 lbs.

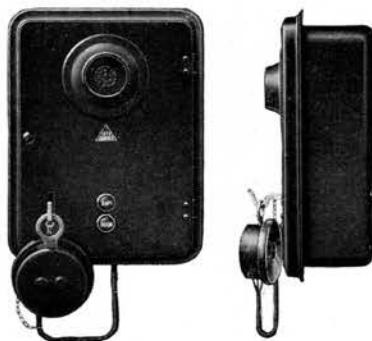
List \$27.00



No. 3380



No. 3382



No. 3381



No. 375

EDWARDS

Central Station Systems 6A and 6B

Continued

Common Talking

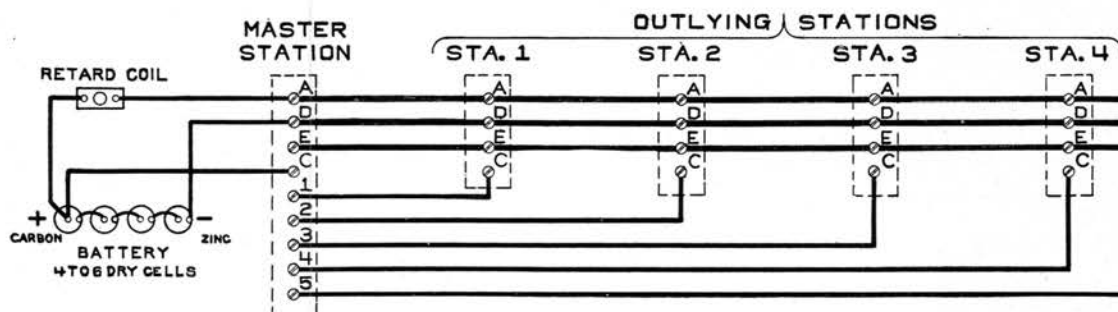
Wiring and Battery Requirements

System 6A Without Annunciator at Central Station.—This system requires 3 wires connected common from the central station to all outlying stations and 1 section or individual wire from the central station to each outlying station.

One set of 4 to 6 dry cells connected in series is sufficient to supply current for ringing and talking. Install a 51H Retardation Coil convenient to the battery location.

Locate battery in a cool, dry place.

Diagram of Connections

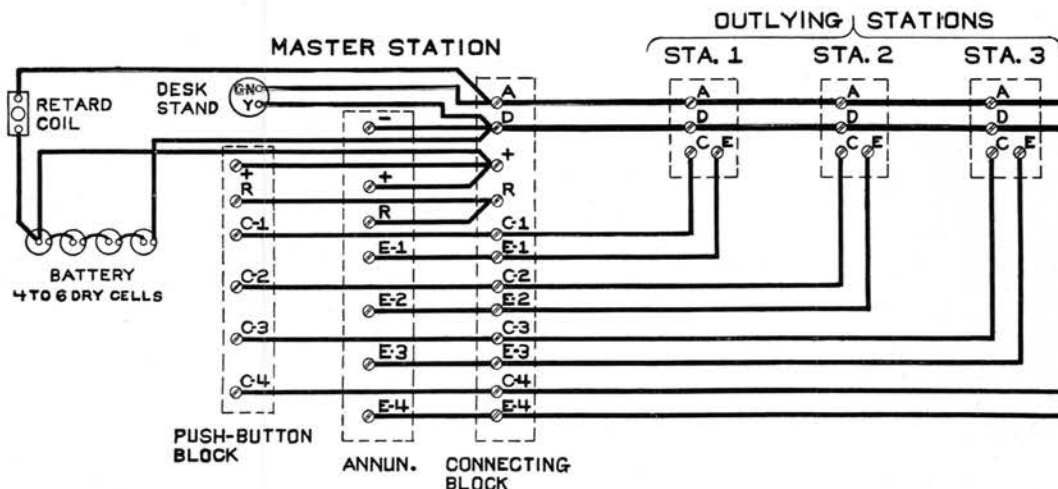


System 6B With Annunciator at Master Station.—This system requires 2 wires connected common from the central station to all outlying stations and 2 section or individual wires from the central to each outlying station.

One set of 6 to 8 dry cells connected in series is sufficient to supply current for ringing and talking. Install a 51H Retardation Coil convenient to the battery location.

Locate battery in a cool, dry place.

Diagram of Connections



EDWARDS

Central Station Annunciator System 6C

Selective Talking

A system of central and outlying stations with means for limited intercommunication between outlying stations through annunciator switchboard at the central station.

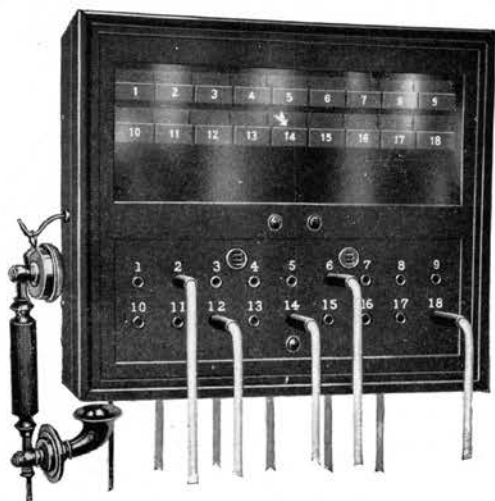
Service

The central or master station can selectively ring

and talk to any outlying station by inserting the plug in the jack of the required station. Conversations between stations on this system are non-interfering. Calls made to master station during the time that the latter is in use are recorded on the annunciator.

Central Station Annunciator Switchboard

No. 3890—Annunciator Telephone. Surface mounting, wall type. An electrically reset arrow signal registers calls from outlying station. A numbered jack is provided for each outlying station into which answering cord is plugged. Equipped with transmitter on front and long type hand receiver on side or combination hand set as illustrated. Finished in Duco black.



No. 3890

Station Capacity	Weight	List Price	Station Capacity	Weight	List Price
16	20 lbs.	\$144.00	56	28 lbs.	\$292.00
20	21 lbs.	162.00	64	30 lbs.	357.00
25	22 lbs.	180.00	72	32 lbs.	387.00
30	23 lbs.	198.00	81	35 lbs.	427.00
36	24 lbs.	220.00	90	37 lbs.	459.00
42	25 lbs.	241.00	100	40 lbs.	501.00
50	27 lbs.	270.00			

For each additional 5 station capacity over 100..... Add **\$30.00**
 For each set cross connecting cords without supervisory signal... Add **10.00**
 For each set cross connecting cords with supervisory signal..... Add **18.00**

Outlying Station Telephones

Surface Wall Type

No. 325—Steel case with hinged door. Equipped with watch-case receiver, raised metal mouthpiece, and enclosed bell. Finished in Duco black. App. weight 4 lbs....

List \$13.70



No. 325

No. 3253—Steel case with hinged door. Equipped with long type hand receiver, raised metal mouthpiece, and enclosed bell. Finished in Duco black. App. weight 4½ lbs..

List \$19.00



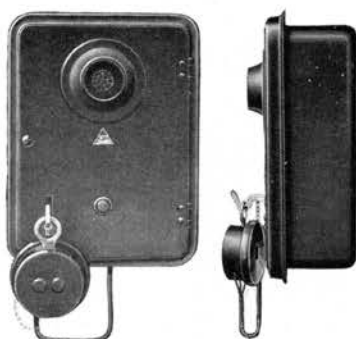
No. 3253

EDWARDS

Central Station Annunciator System 6C

Continued

Selective Talking



No. 3381



No. 378

Flush Wall Type:

No. 3381—Steel case flush mounting telephone with hinged door and detachable steel back box. Equipped with watchcase receiver, raised metal mouthpiece and enclosed bell. A unique feature of design in the housing permits alignment of the set where back boxes are set out of plumb or too far forward in wall. Finished in Duco black.

Overall dimensions: 8" high, 6" wide; Wall cut dimensions: 7 $\frac{3}{8}$ " high, 5 $\frac{3}{8}$ " wide, 2 $\frac{3}{8}$ " deep.

Weight, 4 $\frac{1}{2}$ lbs. List \$13.70

Desk Type:

No. 378—Desk stand with single button in base, adjustable transmitter and long hand receiver. Connected by 6 feet of brown cord to a metal covered terminal box enclosing a buzzer and terminal strip. App. weight 5 lbs.

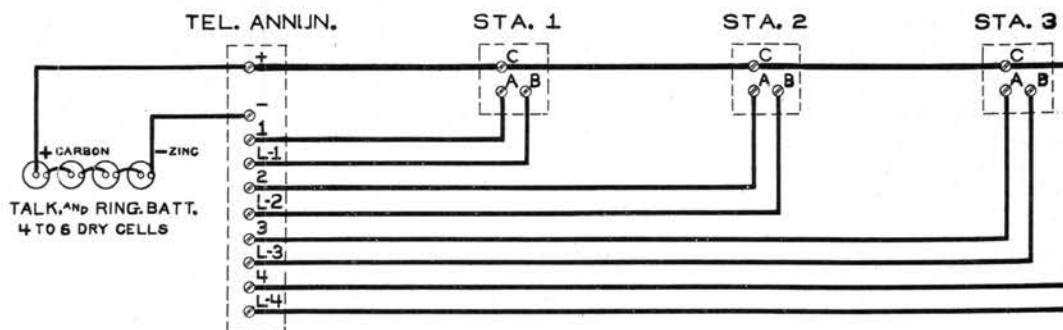
List \$27.00

Wiring and Battery Requirements

This system requires 2 section or individual wires from the master to each outlying station and 1 wire connected common from the master to all outlying stations.

For operation of this system a battery of 5 to 7 dry cells connected in series is sufficient to supply current for ringing and talking.

Diagram of Connections



EDWARDS

Private Exchange System No. 50

Selective Talking

A complete private telephone system providing intercommunication between any number of stations through a central station lamp signal switchboard.

Service

Removing the receiver from the hook at any station signals operator at the switchboard. Call is answered by operator inserting answering plug and throwing a key associated with cord pair to a forward position. The desired station is called by inserting a calling or front cord in line jack and throwing the ringing lever to rear position. Termination of conversation between outlying stations is indicated by supervisory signal.

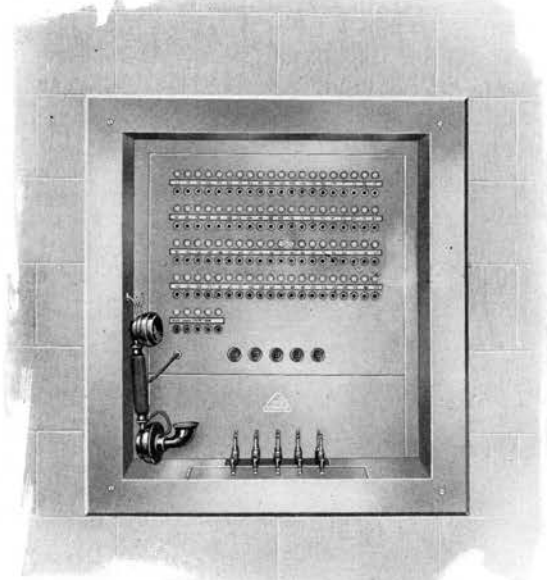
Lamp Signal Switchboards:

No. 3851—Flush Wall type. Designed for inconspicuous mounting in wall. Its neat appearance will harmonize with all architectural and decorative arrangements. Same equipment as No. 3852 except operator's telephone is of handset type. Finished in oak or mahogany.

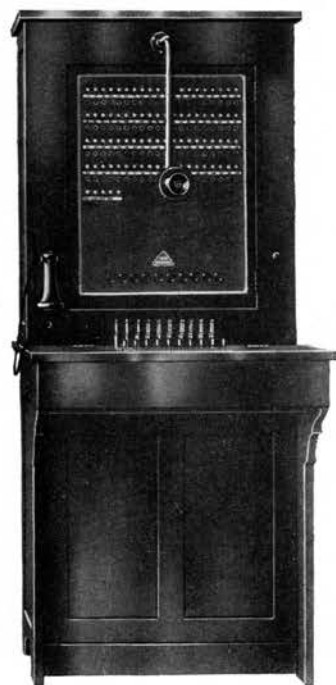
No. 3852—Cabinet type. Face panel is equipped with opal lamp signals with associated metallic circuit line jacks for each station. Keyboard is equipped with combination ringing and listening keys for each cord circuit.

Regularly furnished with one pair of answering and calling cords for each 10 lines. Operator's telephone is equipped with head band or hand receiver. Finished in oak or mahogany.

No. 3853—Desk type. Consists of switchboard unit built into standard flat top desk. Same equipment as No. 3852. Operator's telephone consists of desk stand with long hand receiver and adjustable transmitter. Finished in oak or mahogany.



No. 3851



No. 3852

Station Capacity	No. 3851 Wall Type	No. 3852 Cabinet Type	No. 3853 Desk Type	Station Capacity	No. 3851 Wall Type	No. 3852 Cabinet Type	No. 3853 Desk Type
20	\$370.60			65	\$588.40	\$653.40	\$888.40
25	417.40	\$482.40	\$717.40	70	600.10	665.10	900.10
30	429.10	494.10	729.10	75	615.40	680.40	915.40
35	444.40	509.40	744.40	80	627.10	692.10	927.10
40	456.10	521.10	756.10	85	648.60	713.60	948.60
45	502.90	567.90	802.90	90	670.10	735.10	970.10
50	514.60	579.60	814.60	95	691.60	756.10	991.60
55	529.90	594.90	829.90	100	713.10	778.10	1013.10
60	541.60	606.60	841.60				

Prices include 1 pair cross connecting cords for each 10 station capacity.

For each additional 5 station capacity over 100 add.....List \$21.50

For each line over 800 feet in length add for line signal relay.....List 10.80

(Continued on following page)

EDWARDS

Private Exchange System No. 50

Continued

Selective Talking

Outlying Station Telephones



No. 326

Surface Wall Type

No. 326—Steel case with hinged door, finished in Duco black. Equipped with watchcase receiver, raised metal mouthpiece, and enclosed bell.

Cat. No.	Height (inches)	Width (inches)	Depth (inches)	Weight	List Price
326	8	6	2 $\frac{3}{4}$	4 lbs.	\$13.00



No. 3261

No. 3262—Steel case with hinged door, finished in Duco black. Equipped with long type hand receiver, raised metal mouthpiece and enclosed bell.

Cat. No.	Height (inches)	Width (inches)	Depth (inches)	Weight	List Price
3262	8	6	2 $\frac{3}{4}$	4 $\frac{1}{2}$ lbs.	\$19.00

Flush Wall Type

No. 3261—Steel case with hinged door and detachable steel back box. Equipped with watchcase receiver, raised metal mouthpiece and enclosed bell. A unique feature of design in the housing permits alignment of the set when back boxes are out of plumb or too far forward. Finished in Duco black. Overall dimensions: 8" high, 6" wide, 2 $\frac{3}{4}$ " deep. Wallcut dimensions: 7 $\frac{3}{8}$ " high, 5 $\frac{3}{8}$ " wide, 2 $\frac{3}{8}$ " deep. App. weight 4 $\frac{1}{2}$ lbs.

List \$13.00



No. 377

Desk Type

No. 377—Desk stand with adjustable transmitter and long type hand receiver. Connected by 6 feet of brown cord to a metal covered terminal box enclosing bell and terminal strip. Finished in Duco black. App. weight 5 lbs.

List \$27.00

Diagram of Connections on following page.

EDWARDS

Private Exchange System No. 50—*Continued*

Selective Talking

Wiring and Battery Requirements

This system requires three conductors from the switchboard to each station installed; 2 section or direct wires and 1 common return wire. For convenience in making connections the use of triple conductors No. 19 B & S gauge copper, rubber covered and braided wire is recommended.

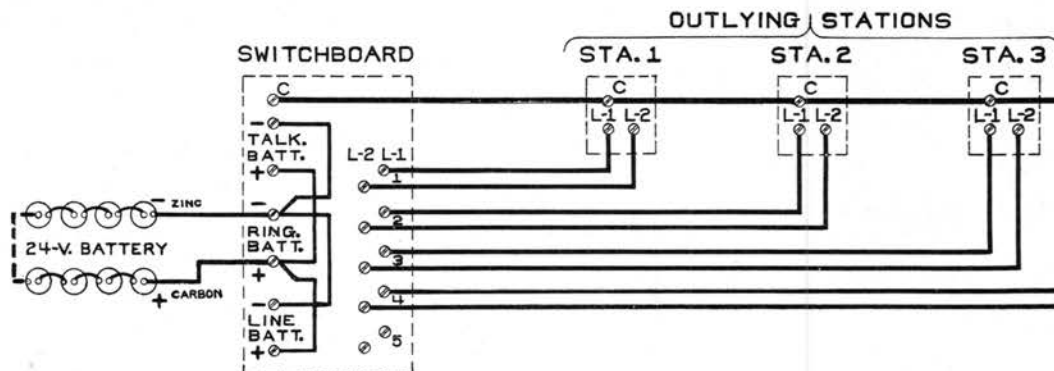
The current supply for operation of the system may be either a 24 volt storage battery with suitable

charging equipment, or one or more sets of 20 dry cells.

When dry cells are used it is recommended that separate sets be furnished for ringing and talking. Terminals are provided in the switchboard to permit one or more sets of battery to be connected as desired.

Locate the battery in a cool, dry place as near as possible to the location of the switchboard.

Diagram of Connections



EDWARDS

Intercommunicating Telephone Accessories

Cable

Where several wires are required to be run between stations, much time can be saved and a neat job assured by using standard interior telephone cable, in which each conductor can be readily distinguished by the color of the insulating braid.

This cable can be furnished in two types, one having a flameproof braided covering for interior use in dry locations, and lead covered for use where wiring

is run in conduit, exposed to the weather, or in damp locations.

In both types of cable the individual conductors are insulated with a single wrapping of silk and single wrapping of cotton. The cable core is then impregnated with a waxing compound and covered with two servings of paper.

Cable suitable for the installation of Edwards systems No. 4 and 5 can be furnished as follows:



No. 398

Cat. No.		No. of Conductors		Outside Diameter		List Price per C Feet	
Braided	Lead Covered	No. 22 B & S	No. 18 B & S	Braided	Lead Covered	Braided	Lead Covered
398-8	399-8	8		5/16"	5/16"	\$14.50	\$26.50
398-12	399-12	12		11/32"	3/8"	21.00	34.00
398-28	399-28	24	4	7/16"	1/2"	41.50	60.00
398-52	399-52	48	4	19/32"	5/8"	51.50	72.50

Battery Boxes:

Black japanned sheet metal box lined with insulating material.

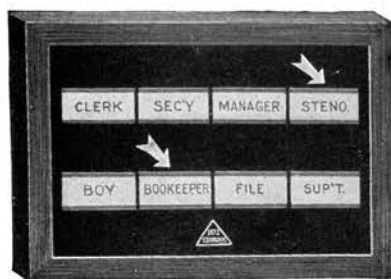
No. 1 A—Holds 3 standard 6" dry cells. Dimensions:
9 7-16" long, 3 1/4" wide, 7 15-32" high. **List \$4.00**

No. 2 B—Holds 9 standard 6" dry cells. Dimensions:
14 5-32" long, 5 23-32" wide, 7 9-16" high. . . **List \$11.00**

No. 402—**Electrically Reset Annunciator.** The indication is a white arrow which points directly at the name card. When reset the arrow drops out of sight. Finished in oak or mahogany.



No. 1-A
Battery Box



No. 402

No. of Drops	Height (inches)	Width (inches)	Depth (inches)	Weight	List Price
4	6 1/2	5	2 5/8	2 3/4 lbs.	\$25.98*
6	6 1/2	6 3/4	2 5/8	3 1/2 lbs.	30.60*
8	6 1/2	8 1/4	2 5/8	4 3/4 lbs.	36.28*
10	8	8 1/4	2 5/8	5 1/2 lbs.	43.82*
12	8	8 1/4	2 5/8	6 lbs.	52.16*
14	8	9 3/4	2 5/8	7 1/2 lbs.	59.80*
16	8	11 1/4	2 5/8	8 1/2 lbs.	67.64*
18	8	11 1/4	2 5/8	8 3/4 lbs.	75.50*
20	9 1/2	9 3/4	2 5/8	9 1/4 lbs.	83.54*
22	9 1/2	11 1/4	2 5/8	10 1/4 lbs.	91.66*
24	9 1/2	11 1/4	2 5/8	10 1/2 lbs.	100.00*

Additional drops per set of 2. **\$12.90**

*Schedule T.

Architect's Specifications

GENERAL:

The contractor shall furnish and install an Edwards Telephone System No.—— providing service between (Specify points at which tele-
phones are to be installed.)

The equipment shall be located as shown on plans, all wall telephones to be located so transmitter is approximately 4' 10" from floor line.

The following equipment shall be furnished and installed:

Specify catalog number and capacity of each telephone station required.

WIRING:

The system shall be wired in strict accordance with the manufacturer's wiring diagram, providing necessary conductors for the service specified above.

All joints in wiring, except under screw terminals, shall be soldered and carefully taped. Where wire is carried through plastered walls, it shall be carefully protected against corrosion or abrasion.

Before apparatus is installed, all wiring shall be tested and cleared of grounds.

CURRENT SUPPLY:

Sufficient dry cells shall be installed in a suitable battery box located in a cool, dry place for the ringing and talking circuits.

Discounts Telephone Catalog No. 12



CONSISTING OF BULLETINS 12-A AND 12-B

Effective Sept. 1st, 1927

F. O. B. New York, N. Y. 30 Days Net, 5%—10 Days



REGULAR DISCOUNT.....50 AND 10%

Exception

BULLETIN 12-B, PAGE 3.....No. 339 Two Party Package
10 or more packages 50 and 20%
Less than 10 packages 50 and 10%

Change in List Prices

BULLETIN 12-A, PAGES 3 and 4.....Combination Mail Box-Telephone
Units now list as follows:

Style No.	No. 396 Loud Speaking Type	No. 397 Armored Cord Type	Style No.	No. 396 Loud Speaking Type	No. 397 Armored Cord Type
3	58.30	46.30	20	179.00	167.00
4	65.40	53.40	20A	179.00	167.00
5	72.50	60.50	21	186.10	174.10
6	79.60	67.60	22	193.20	181.20
7	86.70	74.70	23	200.30	188.30
8	93.80	81.80	24	207.40	195.40
9	100.90	88.90	25	214.50	202.50
10	108.00	96.00	26	221.60	209.60
11	115.10	103.10	27	228.70	216.70
12	122.20	110.20	28	235.80	223.80
12A	122.20	110.20	29	242.90	230.90
13	129.30	117.30	30	250.00	238.00
14	136.40	124.40	31	257.10	245.10
14A	136.40	124.40	32	264.20	252.20
15	143.50	131.50	33	271.30	259.30
16	150.60	138.60	34	278.40	266.40
16A	150.60	138.60	35	285.50	273.50
17	157.70	145.70	36	292.60	280.60
18	164.80	152.80	37	299.70	287.70
18A	164.80	152.80	38	306.80	294.80
19	171.90	159.90	39	313.90	301.90
			40	321.00	309.00

BULLETIN 12-A, PAGE 5.....Mail Boxes now list as follows:
No. 393 Std. Mail Box.....\$6.00 per gang
No. 394 Mail Box with push in trim under each gang.....6.50 per gang

EDWARDS^{and} COMPANY
INC.

PRINTED IN U. S. A.



Discounts

Telephone Catalog No. 12

CONSISTING OF BULLETINS 12-A AND 12-B

Effective Sept. 1st, 1927

F. O. B. New York, N. Y.

REGULAR DISCOUNT.....50%

Change in List Prices

BULLETIN 12-A, PAGES 3 and 4....Combination Mail Box-Telephone
Units now list as follows:

Style No.	No. 396 Loud Speaking Type	No. 397 Armored Cord Type	Style No.	No. 396 Loud Speaking Type	No. 397 Armored Cord Type
3	58.30	46.30	20	179.00	167.00
4	65.40	53.40	20A	179.00	167.00
5	72.50	60.50	21	186.10	174.10
6	79.60	67.60	22	193.20	181.20
7	86.70	74.70	23	200.30	188.30
8	93.80	81.80	24	207.40	195.40
9	100.90	88.90	25	214.50	202.50
10	108.00	96.00	26	221.60	209.60
11	115.10	103.10	27	228.70	216.70
12	122.20	110.20	28	235.80	223.80
12A	122.20	110.20	29	242.90	230.90
13	129.30	117.30	30	250.00	238.00
14	136.40	124.40	31	257.10	245.10
14A	136.40	124.40	32	264.20	252.20
15	143.50	131.50	33	271.30	259.30
16	150.60	138.60	34	278.40	266.40
16A	150.60	138.60	35	285.50	273.50
17	157.70	145.70	36	292.60	280.60
18	164.80	152.80	37	299.70	287.70
18A	164.80	152.80	38	306.80	294.80
19	171.90	159.90	39	313.90	301.90
			40	321.00	309.00

BULLETIN 12-A, PAGE 5.....Mail Boxes now list as follows:

No. 393 Std. Mail Box.....\$6.00 per gang

No. 394 Mail Box with push in trim under each gang...6.50 per gang

EDWARDS and COMPANY
INC.

PRINTED IN U. S. A.

THIS CATALOG COVERS TELEPHONES ONLY

EDWARDS^{and} COMPANY INC.

*manufacturers of complete
signaling device systems*

and

Bells and Buzzers

Annunciators

Push Buttons

Transformers

Door Openers

Fire Alarms

Burglar Alarms

Etc.

*Literature, information and planning assistance
is available at any of the following branches*

ATLANTA, GA.
BALTIMORE, MD.
BOSTON, MASS.
CHICAGO, ILL.
COLUMBUS, OHIO
DALLAS, TEXAS
DENVER, COLO.

DETROIT, MICH.
KANSAS CITY, MO.
LOS ANGELES, CAL.
NEW ORLEANS, LA.
PHILADELPHIA, PA.
PITTSBURGH, PA.
PORTLAND, ORE.

SAN FRANCISCO, CAL.