

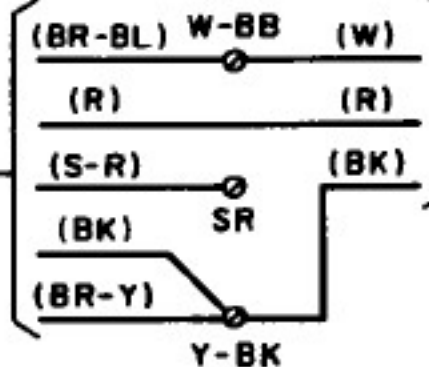
TABLE A
FILTER (OPTIONAL)

Type Filter		Filter Leads	Filter Lead Termination
302G	5302G		
61P or 61L	61S	BK	BK of Dial
		Y	Y of Dial
		R	Filter bracket terminal. Also, disconnect BR-Y lead from Y of dial and reconnect to filter bracket terminal.

TABLE B
LINE AND RINGER CONNECTIONS

Wire or Lead		Individual or Bridged	
Mounting Cord in Set	R	L1	
	G	L2Y	
	Y	Gnd	
Ringer Leads	R	L1	
	BK	K	
Mounting Cord at Connecting Block	R	R	
	G	G	
	Y	Y	
Line Wire at Connecting Block	Ring	R	R
	Tip	G	G
	Grd	Y	Y

APPARATUS BLANK
82A



DERIVED FROM:
BELL SYSTEM PRACTICES
SECTION 502-400-401
Issue 2, November, 1961

SIMPLIFIED & REFORMATTED
FOR VIEWING ON SCREEN
11-29-05 STEPH KERMAN

Note 1: To permanently silence ringer, connect both red and black ringer leads to K terminal.

Note 2: When a G-type hand set is used with the 5302G, telephone set, connect red and one white conductor of hand set cord to R terminal of induction coil.

**TELEPHONE SETS—302E, G, 5302G
COMMON BATTERY — CONNECTIONS**