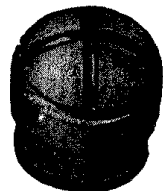


**Western Electric
LAMP SOCKET CAPS**

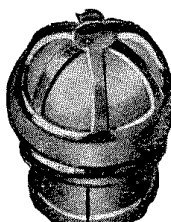
The lenses of Western Electric lamp socket caps are thick and substantial, being made from specially selected and treated glass. These lenses are held firmly in place in the cap cases by spinning the edges over the lenses. The cases are slotted to give a spring fit for the cap in a socket.

No. 2 and 72 Type—Used with Nos. 12 and 13 Lamp Sockets—Diameter $\frac{13}{16}$ Inch

Code No.	Symbol	Color	Code No.	Symbol	Color
2A		White opalescent	2AA		Red
2B		White opalescent	2AB		White opalescent
2C		White opalescent	2AC		Red opalescent
2D		White opalescent	2AF		White opalescent
2E		White opalescent	2AG		White opalescent
2F		White opalescent	2AH		White opalescent
2G		White opalescent	2AJ		White opalescent
2H		Red opalescent	2AK		White opalescent
2J		White opalescent	2AM		White opalescent
2K		White opalescent	2AN		White opalescent
2L		Green opalescent	2AP		White opalescent
2M		White opalescent	2AS		White opalescent
2N		Red opalescent	2AT		White opalescent
2P		Jeweled red	2AU		White opalescent
2R		Jeweled blue	2AW		White opalescent
2S		Jeweled green	2AY		White opalescent
2T		Red opalescent	2AZ		Red opalescent
2U		Amber opalescent	2BC		White opalescent
2W		Blue opalescent	2BD		White opalescent
2Y		Green opalescent	2BE		Green opalescent



No. 2C



No. 2J



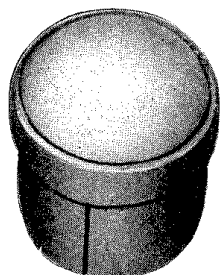
No. 2AY

Note. The No. 72 type is numbered as follows:

Code No.	72A,	72B,	72C,	72D,	72E,	72F,	72G,	72H,	72J,	72K.
Symbol	O,	1,	2,	3,	4,	5,	6,	7,	8,	9.

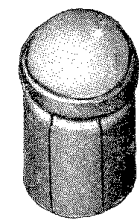
No. 4 Type—Used with No. 4 Type Lamp Sockets—Overall Diameter $\frac{37}{64}$ Inch

Used in the No. 34 lamp socket for all such special cases as pilot signals, fire alarms, supervisor's signals, and for other classes of work in which the mounting of a large signal is desirable.



No. 4A

Code No.	Symbol	Color	Code No.	Symbol	Color
4A		White opalescent	4D		Red
4B		Jeweled red	4F		Green
4C		Jeweled green	4G		White opalescent



No. 8A

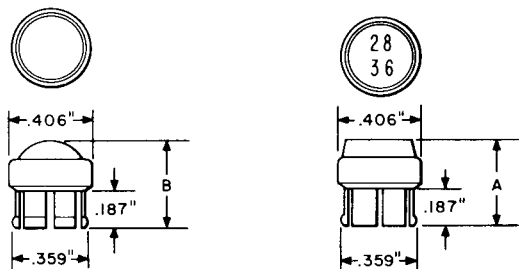
No. 8 Type—Used with No. 30 Lamp Socket—Overall Diameter $\frac{21}{64}$ Inch

Code No.	Symbol	Color	Code No.	Symbol	Color	Code No.	Symbol	Color
8A		White opalescent	8K		White opalescent	8AB		Green opalescent
8B		Clear	8L		Green opalescent	8AC		Red opalescent
8D		Red opalescent	8R		White opalescent	8AD		White opalescent
8E		White opalescent	8T		White opalescent	8AE		White opalescent
8F		White opalescent	8U		White opalescent	8AF		White opalescent
8G		White opalescent	8W		Jeweled red	8AG		White opalescent
8H		White opalescent	8Y		Green opalescent	8AH		White opalescent
8J		White opalescent	8AA		Red			

CAPS

Lamp

2 Type



**2 Type, Except
2CP and CR**

2CP and CR

Thick, substantial lenses made from specially selected and treated glass, unless otherwise noted. Lenses are held firmly in place in cap cases by spinning the edges over the lenses. Dimension A is 0.143 inch, dimension B is 0.531 inch for 2EE, 2EF, 2EH, 2EG and 0.468 inch for all other codes.

Requires a 319B tool for removal. Used with 12, 47B and E, 49, 50, and 53A lamp sockets.

Code No.	Comcode	Symbol	Color
2P	100 079 995		Jeweled red
2R	100 080 001		Jeweled clear blue (frosted on rear only)
2S	100 080 019		Jeweled green
2T	100 080 027		Red opalescent
2U	100 080 035		Clear amber (frosted on rear only)
2W	100 080 043		Clear blue (frosted)
2Y	100 080 050		Green opalescent
2Z	100 080 068		White opalescent
2AA	100 080 076		Red opalescent
2AB	100 080 084		White opalescent
2AC	100 080 092		Red opalescent
2AE	100 080 118		Red opalescent
2AF	100 080 126		White opalescent
2AG	100 080 134		White opalescent
2AH	100 080 142		White opalescent
2AJ	100 080 159		White opalescent
2AK	100 080 167		White opalescent
2AL	100 080 175		Green opalescent
2AM	100 080 183		White opalescent
2AN	100 080 191		White opalescent
2AP	100 080 209		White opalescent
2AS	100 080 225		White opalescent
2AT	100 080 233		White opalescent
2AU	100 080 241		White opalescent
2AW	100 080 258		White opalescent
2AY	100 080 266		White opalescent
2A	100 079 862		White opalescent
2B	100 079 870		White opalescent
2C	100 079 888		White opalescent
2D	100 079 896		White opalescent
2E	100 079 904		White opalescent
2F	100 079 912		White opalescent
2G	100 079 920		White opalescent
2H	100 079 938		Red opalescent
2J	100 079 946		White opalescent
2K	100 079 953		White opalescent
2L	100 079 961		Green opalescent
2M	100 079 979		White opalescent
2N	100 079 987		Red opalescent

CAPS

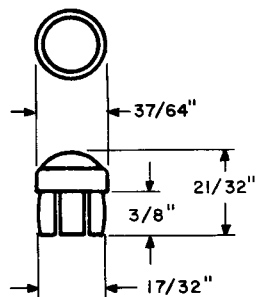
Lamp

2 Type (Continued)				Code No.	Comcode	Symbol	Color
				2CN	100 080 530		White opalescent
2AZ	100 080 274		Red opalescent	*2CP	100 080 548		Clear amber (frosted on rear only)
2BC	100 080 290		White opalescent	*2CR	100 080 555		Clear colorless (frosted on rear only)
2BD	100 080 308		White opalescent	2CS	100 080 563		Green opalescent
2BE	100 080 316		Green opalescent	2CT	100 080 571		Green opalescent
2BF	100 080 324		White opalescent	2CU	100 080 589		Green opalescent
2BG	100 080 332		Green opalescent	2CW	100 080 597		Green opalescent
2BH	100 080 340		Green opalescent	2CY	100 080 605		Red opalescent
2BJ	100 080 357		White opalescent	2EA	100 080 613		Red opalescent
2BN	100 080 365		Clear	2EB	100 080 621		Green opalescent
2BP	100 080 373		Clear amber (frosted on rear only)	2EC	100 080 639		White opalescent
2BU	100 080 381		White opalescent	2ED	100 080 647		White opalescent
2BW	100 080 399		Red opalescent	*2EE	100 080 654		White opalescent
2BY	100 080 407		Green opalescent	*2EF	100 080 662		Red opalescent
2CA	100 080 415		Green opalescent	*2EG	100 080 670		Green opalescent
2CB	100 080 423		Red opalescent	**2EH			Mist white
2CC	100 080 431		Green opalescent	*Has molded plastic lens, cannot be used with lamps that dissipate more than 2-1/2 watts.			
2CD	100 080 449		Green opalescent	**Made of a cellulose acetate butyrate and cannot be used with incandescent lamps. Provides increased transmission when used with a nonincandescent source.			
2CE	100 080 456		White opalescent				
2CF	100 080 464		Clear amber (frosted on rear only)				
2CG	100 080 472		Red opalescent				
2CH	100 080 480		Red opalescent				
2CJ	100 080 498		Green opalescent				
2CK	100 080 506		Clear amber (frosted on rear only)				
2CL	100 080 514		Green opalescent				
2CM	100 080 522		Green opalescent				

CAPS

Lamp

4 Type



Code No.	Comcode	Symbol	Color
4U	100 080 845		Jeweled clear amber (frosted on rear only)
4W	100 080 852		Jeweled clear green (frosted on rear only)
4Y	100 080 860		Jeweled clear red (frosted on rear only)
4AA	100 080 878		Colorless opalescent

*Inside surface of lens is concave.

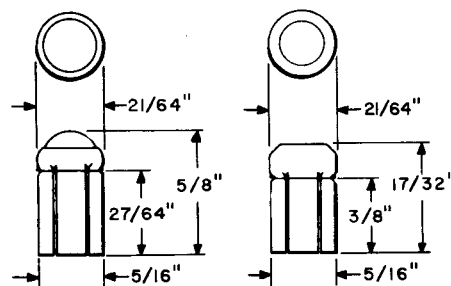
8 Type

Used with 34 type and 53A lamp sockets and 20B and similar type indicators.

Requires a 319B tool for removal.

Used for pilot signals, fire alarms, and supervisor's signals.

Code No.	Comcode	Symbol	Color
4A	100 080 696		White opalescent
4B	100 080 704		Jeweled red opalescent
4C	100 080 712		Jeweled green opalescent
4D	100 080 720		Red opalescent
4F	100 080 746		Green opalescent
4G	100 080 753		White opalescent
4L	100 080 779		Green opalescent
4M	100 080 787		Clear amber (frosted on rear only)
*4N	100 080 795		White opalescent
*4P	100 080 803		Red opalescent
*4R	100 080 811		Green opalescent
*4S	100 080 829		Clear amber (frosted on rear only)
4T	100 080 837		Jeweled red opalescent



8 Type, Except 8BA, BB, BD, CF and CG

8BA, BB, BD, CF, and CG

Used with 30 and 43A lamp sockets.
Require a 319B tool for removal.

Code No.	Comcode	Symbol	Color
8A	100 080 886		White opalescent
8B	100 080 894		Clear
8D	100 080 910		Red opalescent
8E	100 080 928		White opalescent
8F	100 080 936		White opalescent

CAPS

Lamp

8 Type (Continued)				Code No.	Comcode	Symbol	Color
Code No.	Comcode	Symbol	Color	8AU	100 081 223		White opalescent
8G	100 080 944		White opalescent	8AY	100 081 249		White opalescent
8H	100 080 951		White opalescent	*8BA	100 081 256		Green opalescent
8J	100 080 969		White opalescent	*8BB	100 081 264		White opalescent
8K	100 080 977		White opalescent	8BC	100 081 272		White opalescent
8L	100 080 985	None	Green opalescent	8BD	100 081 280		White opalescent painted black, except for a raised bar across the face.
8R	100 080 993		White opalescent	8BE	100 081 298		Green opalescent
8T	100 081 017		White opalescent	8BF	100 081 306	None	Clear amber (frosted in rear only)
8U	100 081 025		White opalescent	8BG	100 081 314		White opalescent
8W	100 081 033	None	Jeweled red opalescent	8BH	100 081 322		Green opalescent
8Y	100 081 041		Green opalescent	8BJ	100 081 330		Jeweled clear blue (frosted in rear only)
8AA	100 081 058		Red opalescent	8BK	100 081 348		White opalescent
8AB	100 081 066		Green opalescent	8BL	100 081 355		Red opalescent
8AC	100 081 074		Red opalescent	8BM	100 081 363		Green opalescent
8AD	100 081 082		White opalescent	8BN	100 081 371		Green opalescent
8AE	100 081 090		White opalescent	8BP	100 081 389		White opalescent
8AF	100 081 108		White opalescent	8BR	100 081 397		Red opalescent
8AG	100 081 116		White opalescent	8BS	100 081 405		Green opalescent
8AH	100 081 124		White opalescent	8BT	100 081 413		Red opalescent
8AJ	100 081 132		Red opalescent	8BU	100 081 421		Clear blue (frosted front and rear)
8AK	100 081 140		Green opalescent	8BW	100 081 439		Red opalescent
8AL	100 081 157		White opalescent	8BY	100 081 447		Clear amber (frosted on rear only)
8AM	100 081 165		Red opalescent	8CA	100 081 454		Green opalescent
8AN	100 081 173		Green opalescent	8CB	100 081 462		White opalescent
8AP	100 081 181		White opalescent				
8AR	100 081 199		Red opalescent				
8AS	100 081 207		Green opalescent				
8AT	100 081 215		Red opalescent				

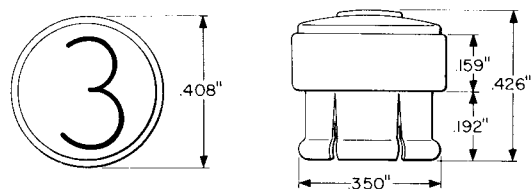
CAPS

Lamp

Code No.	Comcode	Symbol	Color	Code No.	Comcode	Symbol	Color
8CC	100 081 470	Ⓢ	Red opalescent (symbol painted white)	72E	100 081 579	④	Black (white opalescent character)
8CD	100 081 488	Ⓢ	Green opalescent (symbol painted white)	72F	100 081 587	⑤	Black (white opalescent character)
8CE	100 081 496	Ⓒ	Green opalescent (symbol painted white)	72G	100 081 595	⑥	Black (white opalescent character)
8CF	100 081 504	⊕	White opalescent	72H	100 081 603	⑦	Black (white opalescent character)
8CG	100 081 512	Ⓢ	White opalescent	72J	100 081 611	⑧	Black (white opalescent character)
8CH	100 081 520	Ⓔ	White opalescent	72K	100 081 629	⑨	Black (white opalescent character)

*Numbered with one or two black digits, as specified in order.

72 Type



Consists of a brass shell and glass lens. Used with 12, 47B and E, 49A and B, and 50A lamp sockets. The 72A through 72K are also used with 6 and 7 type indicators.

Code No.	Comcode	Symbol	Color
72A	100 081 538	⓪	Black (white opalescent character)
72B	100 081 546	①	Black (white opalescent character)
72C	100 081 553	②	Black (white opalescent character)
72D	100 081 561	③	Black (white opalescent character)

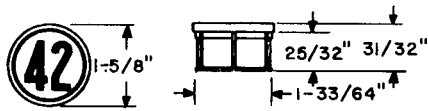
*72L	100 081 637	⑫ ③④	White opalescent (black characters)
*72M	100 081 645	⑫ ③④	Red opalescent (black characters)
*72N	100 081 652	⑫ ③④	Green opalescent (black characters)
72P	100 081 660	○	This cap is intended to be used in unequipped positions of lamp sockets. Has black face and is opaque.
*72R	100 081 678	⑫ ③④	Clear amber (black characters, frosted on rear only)
*72S	100 081 686	⑫ ③④	Black (white opalescent characters)

*Characters as specified in order. One, two, or three characters arranged on one line; four characters arranged as shown.

CAPS

Lamp

74A



Nickel finished metal shell with flat ground glass lens.
 If specified on order, one, two, or three digits will be painted in black.

For use with lamp annunciators.

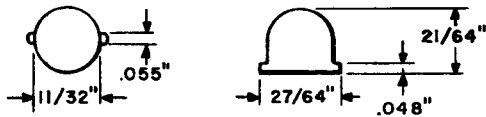
Comcode: 100 081 702

100 994 912 one character

100 994 920 two characters

100 994 938 three characters

75 Type



Plastic cap having two lugs for mounting.

Code No.	Comcode	Color
75A	100 081 710	White
75B	100 081 728	Red
75C	100 081 736	Green

For use with A1 lamps in number 102 type key telephone system.