

SUBSCRIBER SETS

688, 690, 1690, AND 2690 TYPES

CONNECTIONS

1. GENERAL

1.01 This section is reissued to:

- Add connections for 2690C subscriber sets
- Show 688A, 688B, 690A, 690B, 1690C1, 1690C2, and 1690C3 (MD)

Since this reissue covers a general revision, arrows ordinarily used to indicate changes have been omitted.

2. CONNECTION INDEX

Table A — Connections For Use With 400-Series Mounting and Associated Modular Type Keys — 688A (MD) and 690A (MD) Sets

Table B — Connections For Use With 400-Series Mounting and Associated Modular Type Keys — 688B (MD) and 690B (MD) Sets

Table C — Connections For Use With 400-Series Mounting and Associated Modular Type Keys — 688C and 690C Sets

Table D — Connections For Use With 1400- or 2400-Series Mounting and Associated Modular Type Keys — 1690- (MD) and 2690-Type Sets

Table E — P-90D095 Polarity Guard Connections For 1690- (MD) and 2690-Type Subscriber Sets

Fig. 1 — 688A (MD) (Nondial) and 690A (MD) (Dial) Subscriber Sets, Connections

Fig. 2 — 688B (MD) (Nondial) and 690B (MD) (Dial) Subscriber Sets, Connections

Fig. 3 — 688C (Nondial) and 690C (Dial) Subscriber Sets, Connections

Fig. 4 — 1690C-Type (MD) Subscriber Set Connections With 25A3 Dial

Fig. 5 — 1690C- (MD) and 2690C-Type Subscriber Sets, Connections

TABLE A

CONNECTIONS FOR USE WITH 400-SERIES
MOUNTING AND ASSOCIATED MODULAR TYPE
KEYS 688A (MD) AND 690A (MD) SETS

LEAD FROM SUBSET	CONNECT TO	
	TERM.	APPARATUS
GN	GN	6E Dial, when associated with 688A (8C dial is part of 690A)
R	R	
RR	Y	
F	B	
B	TIP OF A	Headset Jacks (Not part of subset)
R	TIP OF B	
GN	SL OF B	
R	R	63A Conn. Block (621A or 622A key)
GN	GN	
TT	TT	
TR	TR	
BZ	BZ	64A Conn. Block (First key unit)
BZ1	BZ1	
B1	B1	
R1	R1	

Notes:

1. BZ lead connects to buzzer case under mounting screw. Connect for AC or DC as required.
2. Dial is part of 690A subscriber set only. When 688A set is used with 6E dial in external mounting, connect to network as shown with local wiring.

- (X) AC operation
(Y) DC operation

TABLE B

CONNECTIONS FOR USE WITH 400-SERIES
MOUNTING AND ASSOCIATED MODULAR TYPE
KEYS 688B (MD) AND 690B (MD) SETS

LEAD FROM SUBSET	CONNECT TO	
	TERM.	APPARATUS
GN	GN	6E Dial, when associated with 688B (8C dial is part of 690B)
R	R	
RR	Y	
F	B	
B	TIP OF A	Headset Jacks (Not part of subset)
R	TIP OF B	
GN	SL OF B	
RA	SL OF A	
R	R	63A Conn. Block (621A or 622A key)
GN	GN	
F	TT	
C	TR	
BZ	BZ	64A Conn. Block (First key unit)
BZ1	BZ1	
B1	B1	
R1	R1	

Notes:

1. BZ lead connects to buzzer case under mounting screw. Connect for AC or DC as required.
2. Dial is part of 690B subscriber set only. When 688B set is used with 6E dial in external mounting, connect to network as shown with local wiring.

- (X) AC operation
(Y) DC operation

TABLE C

CONNECTIONS FOR USE WITH 400-SERIES
MOUNTING AND ASSOCIATED MODULAR TYPE
KEYS 688C AND 690C SETS

LEAD FROM SUBSET	CONNECT TO	
	TERM.	APPARATUS
GN	GN	6E Dial, when associated with 688C (8C dial is part of 690C)
R	R	
RR	Y	
F	B	
B	TIP OF A	Headset Jacks (Not part of subset)
R	TIP OF B	
GN	SL OF B	
RA	SL OF A	
R	R	63A Conn. Block (621A or 622A key)
GN	GN	
TR	TR	
TT	TT	
BZ	BZ	64A Conn. Block (First key unit)
BZ1	BZ1	
B1	B1	
R1	R1	

Notes:

1. BZ lead connects to case under mounting screw. Connect for AC or DC as required.
2. Dial is part of 690C subscriber set only. When 688C set is used with 6E dial in external mounting, connect to network as shown with local wiring.
3. Connect 100A varistor between sleeves of jack A and B.
4. Network 425E for 688C subscriber set. Network 4010B for 690C subscriber set. H terminal on 4010B network only.

(X) AC operation

(Y) DC operation

TABLE D

CONNECTIONS FOR USE WITH 1400, OR
2400 SERIES MOUNTING AND ASSOCIATED
MODULAR TYPE KEYS
1690- (MD) AND 2690-TYPE SETS

LEAD FROM SUBSET	CONNECT TO	
	TERM.	APPARATUS
B	TIP OF A	Headset Jacks (Not part of subset)
R	TIP OF B	
GN	SL OF B	
RA	SL OF A	
R	R	63A Conn. Block (621A or 622A key)
GN	GN	
TR	TR	
TT	TT	
BZ	BZ	64A Conn. Block (First key unit)
BZ1	BZ1	
B1	B1	
R1	R1	

Notes:

1. BZ lead connects to case under mounting screw. Connect for AC or DC as required.
2. Connect 100A varistor between sleeves of jack A and B.

(X) AC operation

(Y) DC operation

TABLE E

P-90D095 POLARITY GUARD CONNECTIONS FOR
1690- (MD) AND 2690-TYPE SUBSCRIBER SETS

LEAD DESIG.	COLOR	REMOVE FROM	CONNECT TO	
		NET.	NET.	POLARITY GUARD
Dial	BK	RR		T
TR		C		S
Polarity Guard	G		RR	
	W		C	

Note: For use when specified by local instructions for end-to-end signaling installations.

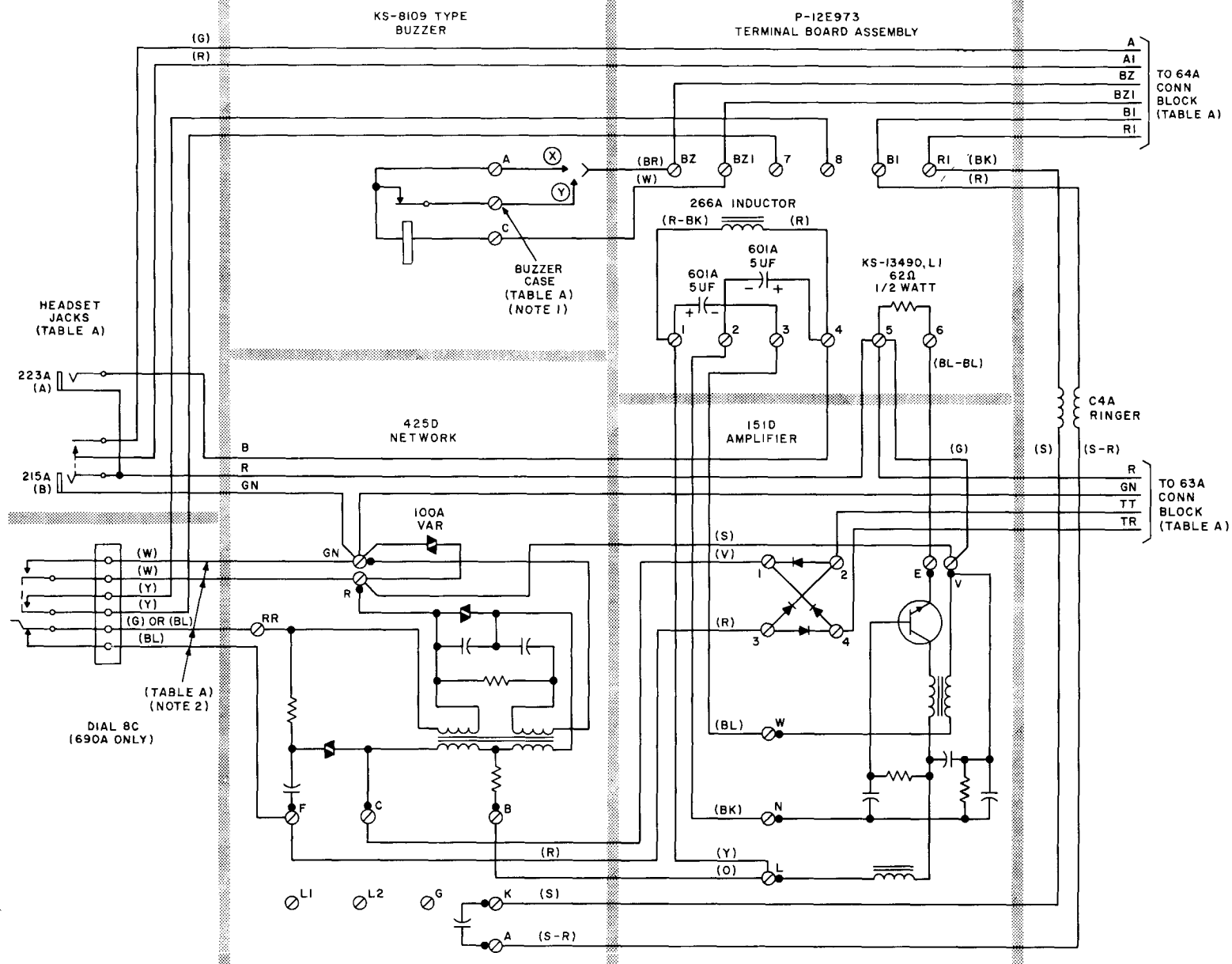


Fig. 1 — 688A (MD) (Nondial) and 690A (MD) (Dial) Subscriber Sets, Connections

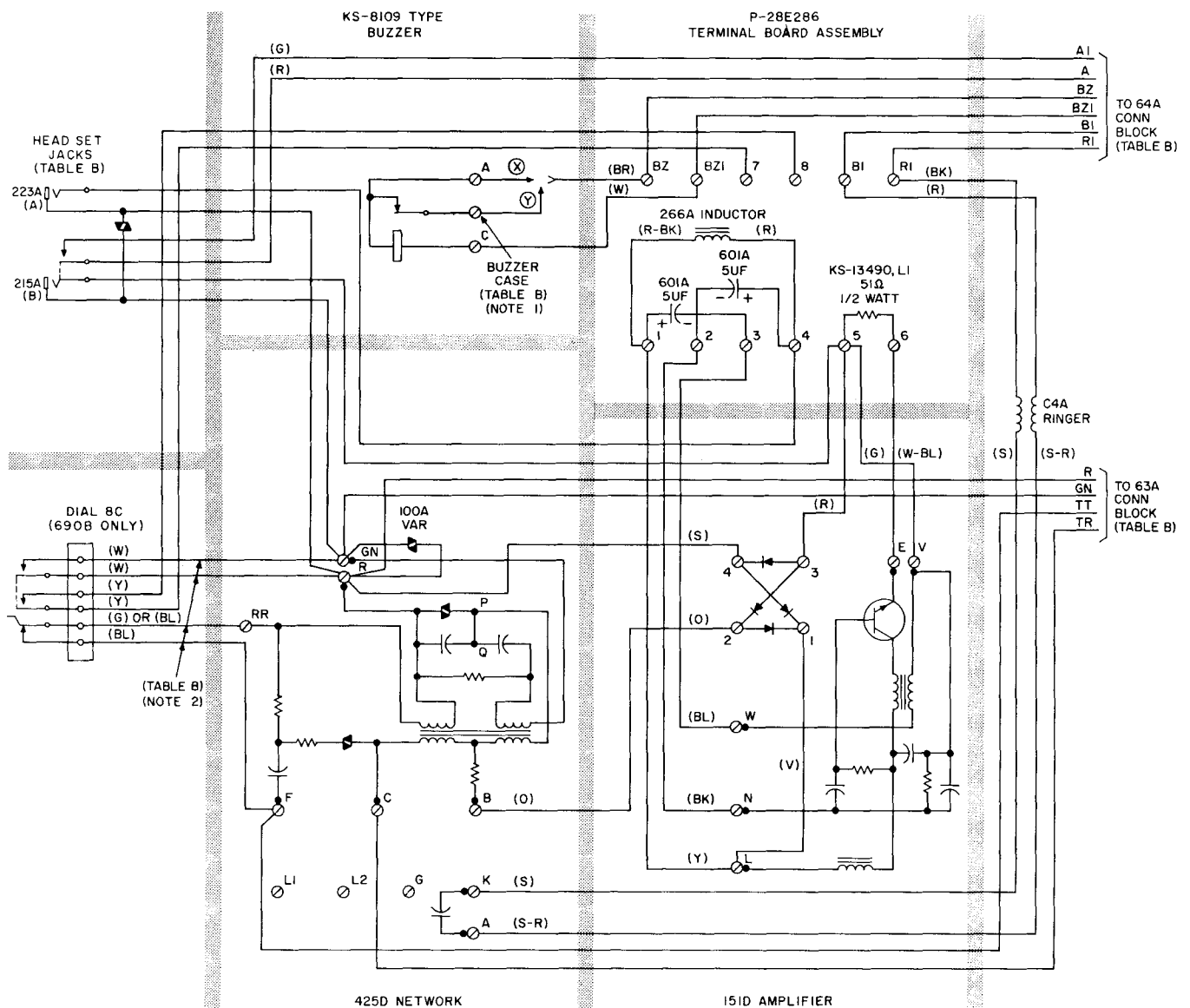


Fig. 2 — 688B (MD) (Nondial) and 690B (MD) (Dial) Subscriber Sets, Connections

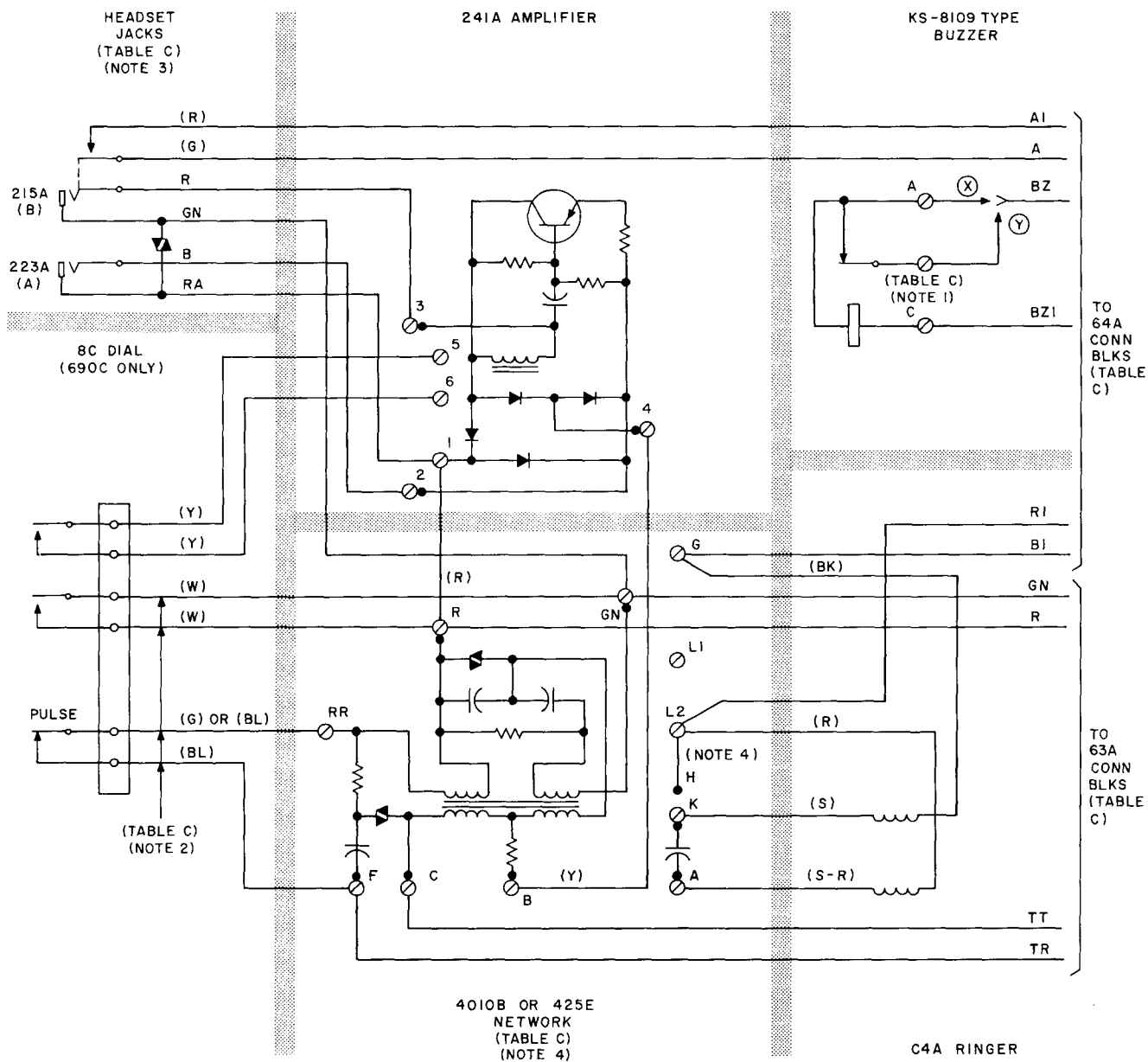


Fig. 3 — 688C (Nondial) and 690C (Dial) Subscriber Sets, Connections

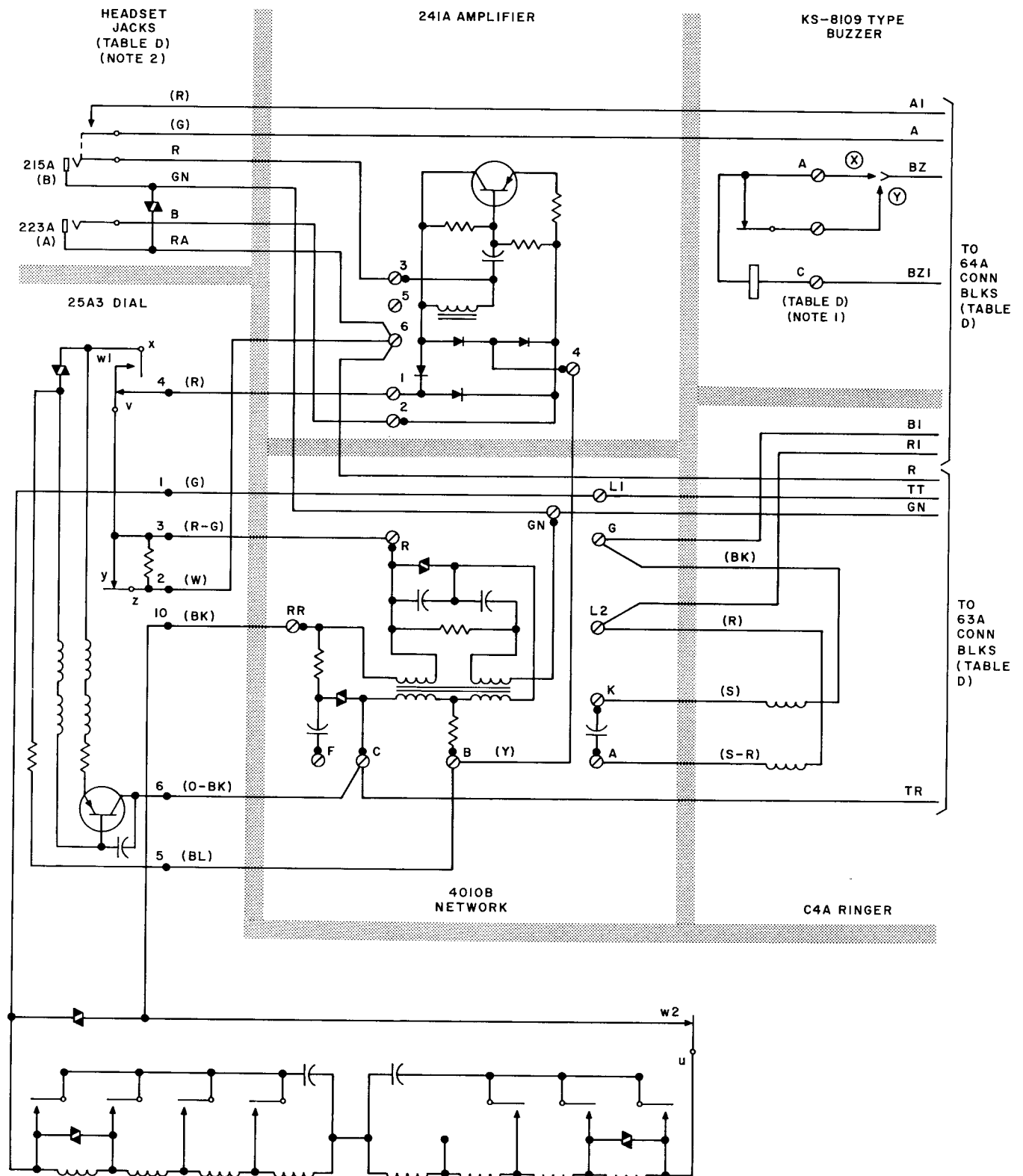


Fig. 4 — 1690C-Type (MD) Subscriber Set Connections With 25A3 Dial

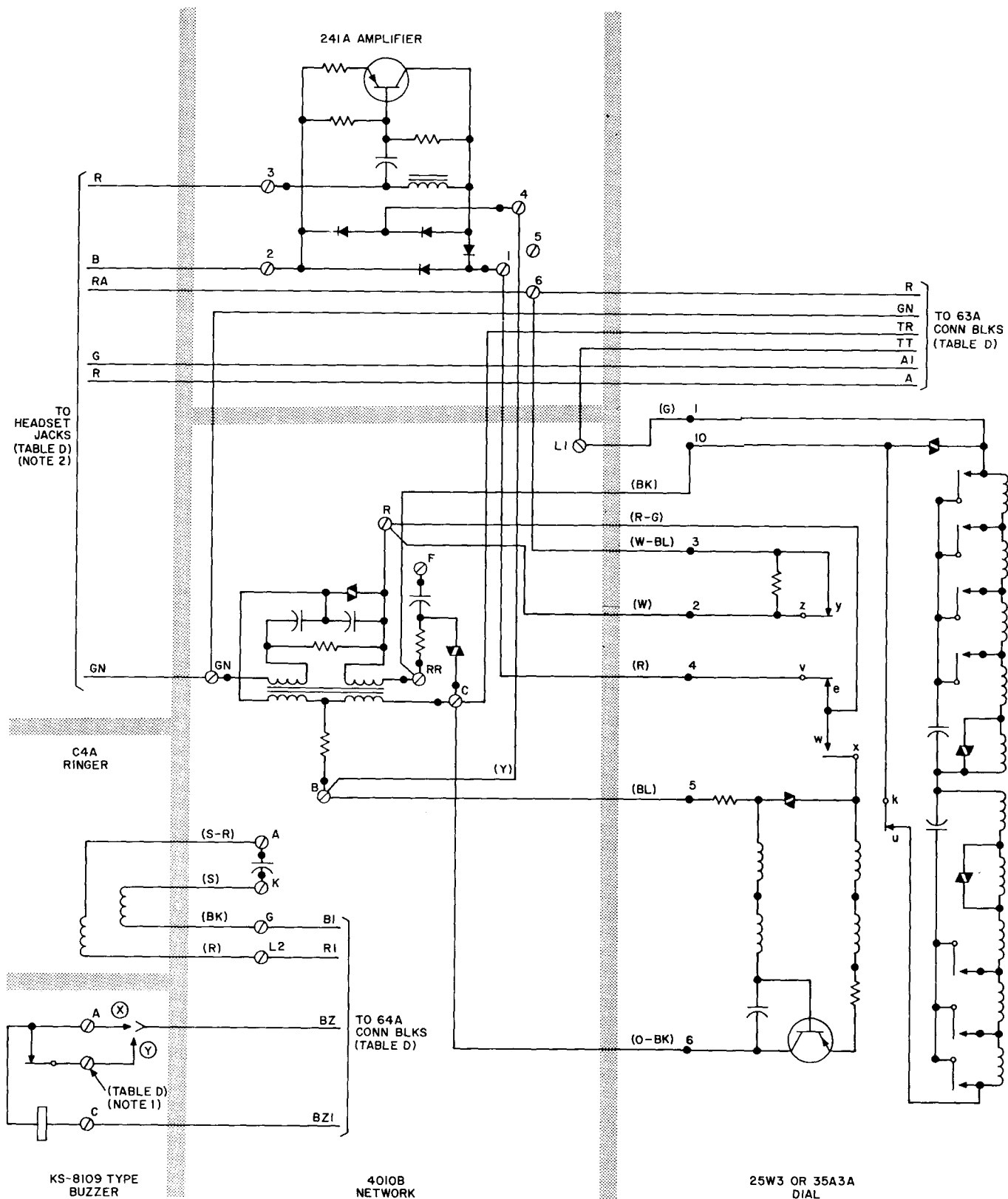


Fig. 5 — 1690C- (MD) and 2690C-Type Subscriber Sets, Connections