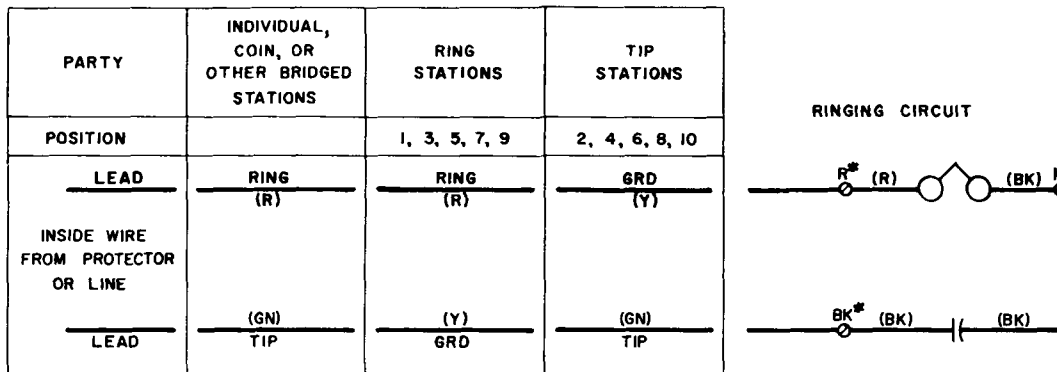


SUBSCRIBER SETS

RINGER AND RELAY TYPES — NONPOLARIZED RINGING

392L; 531A; 534DE, DF; 584DE, DF; 592A; 687A; 684BT

COMMON AND LOCAL BATTERY — CONNECTIONS



* THE 392L SUBSCRIBER SET HAS NO TERMINAL DESIGNATIONS.
THE RED RINGER LEAD INDICATES THE "R" TERMINAL.

Fig. 1 — 392L and 592A Subscriber Set Connections

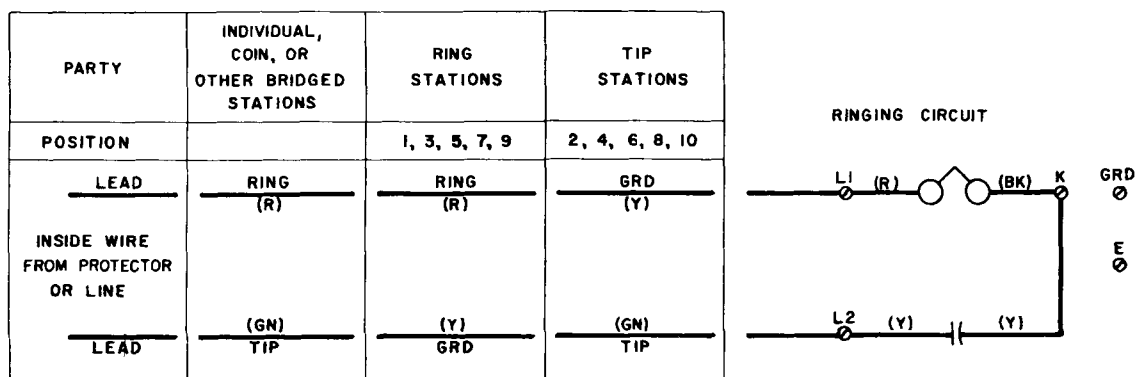


Fig. 2 — 531A Subscriber Set Connections

PARTY	INDIVIDUAL, COIN, OR OTHER BRIDGED STATIONS	RING STATIONS	TIP STATIONS
POSITION		1, 3, 5, 7, 9	2, 4, 6, 8, 10
LEAD	RING (R)	RING (R)	GRD (Y)
INSIDE WIRE FROM PROTECTOR OR LINE			
LEAD	(GN) TIP	(Y) GRD	(GN) TIP

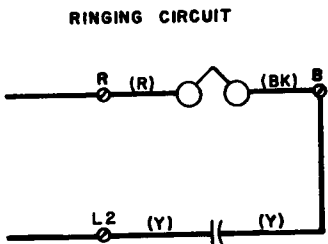


Fig. 3 — 534DE and DF and 584DE and DF
Subscriber Set Connections

PARTY	INDIVIDUAL, COIN, OR OTHER BRIDGED STATIONS	RING STATIONS	TIP STATIONS
POSITION		1, 3, 5, 7, 9	2, 4, 6, 8, 10
LEAD	RING (R)	RING (R)	TIP (GN)
INSIDE WIRE FROM PROTECTOR OR LINE			
LEAD	(GN) TIP	(Y) GRD	(Y) GRD

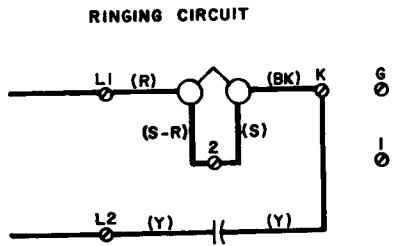


Fig. 4 — 687A Subscriber Set Connections

PARTY	INDIVIDUAL, COIN, OR OTHER BRIDGED STATIONS	RING STATIONS	TIP STATIONS
POSITION		1, 3, 5, 7, 9	2, 4, 6, 8, 10
LEAD	RING (R)	RING (R)	TIP (GN)
INSIDE WIRE FROM PROTECTOR OR LINE			
LEAD	(GN) TIP	(Y) GRD	(Y) GRD

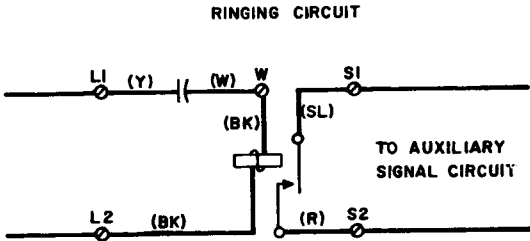


Fig. 5 — 684BT Subscriber Set Connections