

SUBSCRIBER SETS

392, 531, 534, 584, 592, 684, AND 687 TYPES

CONNECTIONS

1. GENERAL

1.01 These subscriber sets are used with common and local battery sets as extension ringers or to provide facilities to complete the electrical circuit to auxiliary signals. The 392-, 531-, 534-, 584-, 592-, and 684-type subscriber sets are MD.

1.02 This section is reissued to:

- Include connection information previously found in Section 502-210-401, which is canceled.
- Revise ringer connections for both polarized and nonpolarized ringing circuits.
- Include replacement information for MD subscriber sets.

Since this reissue covers a general revision, arrows ordinarily used to indicate changes have been omitted.

1.03 The 531C, 534DT, 592C, and 687B subscriber sets provide polarized ringing for selective party service on a multiparty line. The 392L, 531A, 534DE, 534DF, 592A, 684B, and 687A subscriber sets are used for semiselective nonpolarized ringing of parties on a multiparty line.

2. CONNECTION INDEX

Fig. 1—392L (MD) Subscriber Set—Nonpolarized Ringing Connections

Fig. 2—531A (MD) Subscriber Set—Nonpolarized Ringing Connections

Fig. 3—531C (MD) or Current 687B Subscriber Set Polarized Ringing Connections For Positive Parties

Fig. 4—531C (MD) or Current 687B Subscriber Set Polarized Ringing Connections For Negative Parties

Fig. 5—534DE (MD) and 534DF (MD) Subscriber Set—Nonpolarized Ringing Connections

Fig. 6—534DT (MD) Subscriber Set—Polarized Ringing Connections

Fig. 7—584DE (MD) and 584DF (MD) Subscriber Set—Nonpolarized Ringing Connections

Fig. 8—592A (MD) Subscriber Set—Nonpolarized Ringing Connections

Fig. 9—592C (MD) Subscriber Set—Polarized Ringing Connections

Fig. 10—684BT (MD) Subscriber Set—Connections For Use With Auxiliary Signal

Fig. 11—687A Subscriber Set—Nonpolarized Ringing Connections

Fig. 12—Modified 531C (MD) or 687B Subscriber Set Connections Negative Parties—Severe Induction

Fig. 13—Modified 531C (MD) or 687B Subscriber Set Connections Positive Parties—Average To Severe Induction

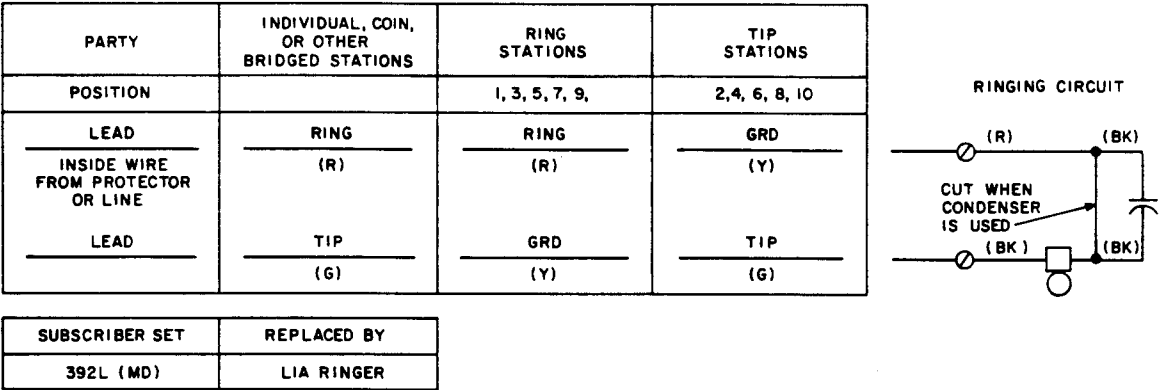


Fig. 1—392L (MD) Subscriber Set—Nonpolarized Ringing Connections

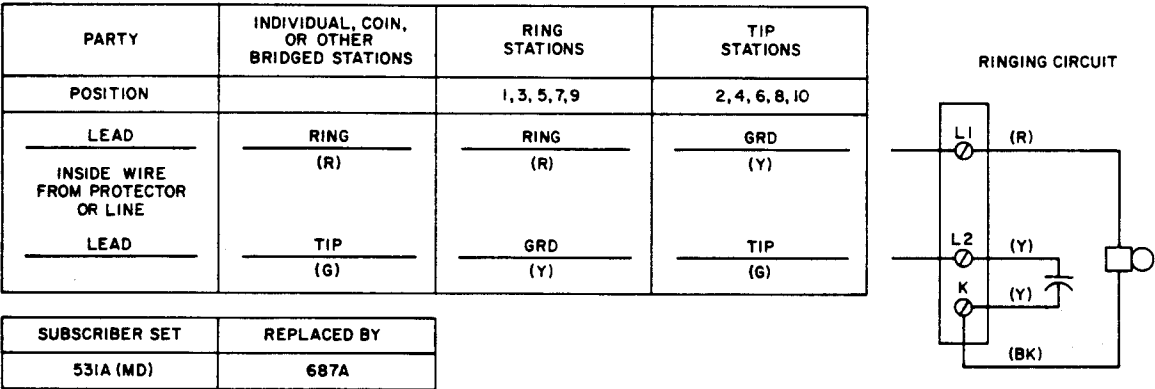


Fig. 2—531A (MD) Subscriber Set—Nonpolarized Ringing Connections

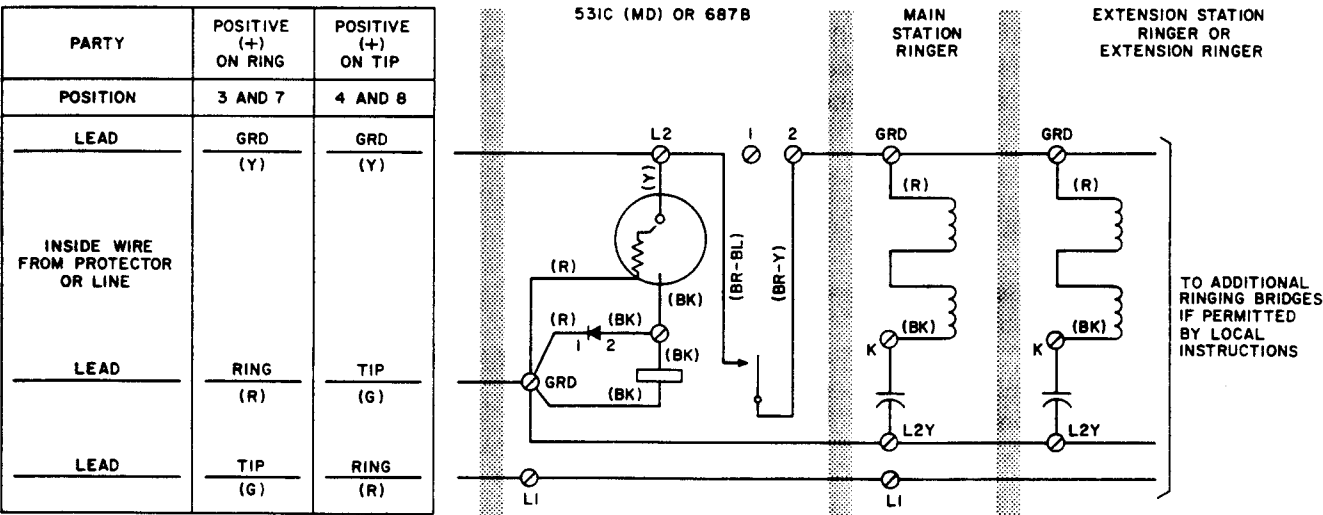


Fig. 3—531C (MD) or Current 687B Subscriber Set Polarized Ringing Connections For Positive Parties

PARTY	NEGATIVE (-) ON RING	NEGATIVE (-) ON TIP
POSITION	1 AND 5	2 AND 6
LEAD	RING (R)	TIP (G)
INSIDE WIRE FROM PROTECTOR OR LINE		
LEAD	GRD (Y)	GRD (Y)
LEAD	TIP (G)	RING (R)

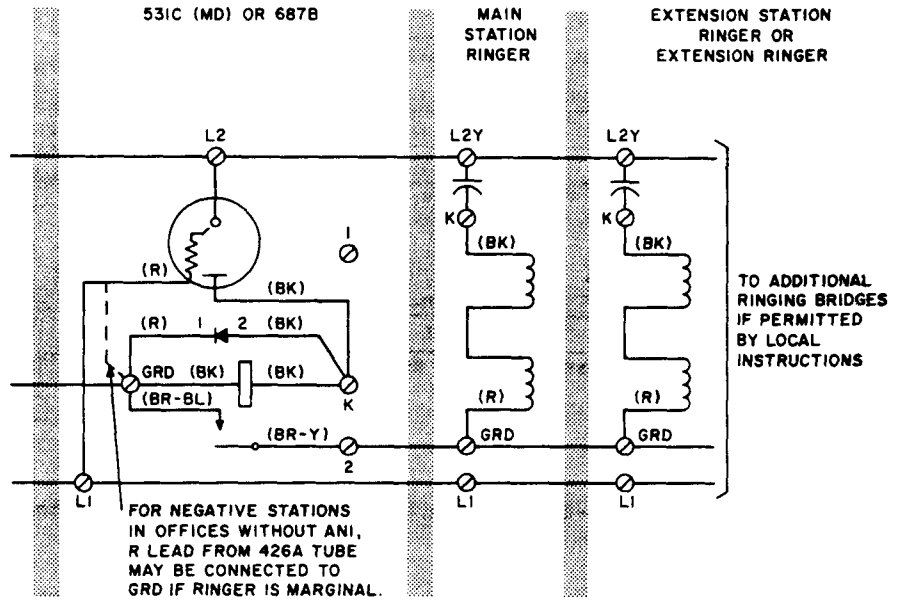


Fig. 4—531C (MD) or Current 687B Subscriber Set Polarized Ringing Connections For Negative Parties

PARTY	INDIVIDUAL, COIN, OR OTHER BRIDGED STATIONS	RING STATIONS	TIP STATIONS
POSITION		1, 3, 5, 7, 9	2, 4, 6, 8, 10
LEAD	RING (R)	RING (R)	GRD (Y)
INSIDE WIRE FROM PROTECTOR OR LINE			
LEAD	TIP (G)	GRD (Y)	TIP (G)

SUBSCRIBER SET	REPLACED BY
534 DE, DF (MD)	687A

NOTE:

CONDENSER NOT FURNISHED UNLESS SPECIFIED WHEN ORDERING 534 DE AND 534 DF SUBSCRIBER SETS.

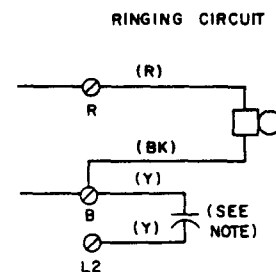


Fig. 5—534DE (MD) and 534DF (MD) Subscriber Set—Nonpolarized Ringing Connections

PARTY	NEGATIVE (-) ON RING	NEGATIVE (-) ON TIP	POSITIVE (+) ON RING	POSITIVE (+) ON TIP
POSITION	1 AND 5	2 AND 6	3 AND 7	4 AND 8
LEAD	RING	TIP	GRD	GRD
INSIDE WIRE FROM PROTECTOR OR LINE	(R)	(G)	(Y)	(Y)
LEAD	TIP	RING	RING	TIP
	(G)	(R)	(R)	(G)

(SEE NOTE) (SEE NOTE)

NOTE:

FOR NEGATIVE STATIONS IN OFFICES WITHOUT ANI, R LEAD FROM 426A TUBE MAY BE CONNECTED TO GRD IF RINGER OPERATION IS MARGINAL.

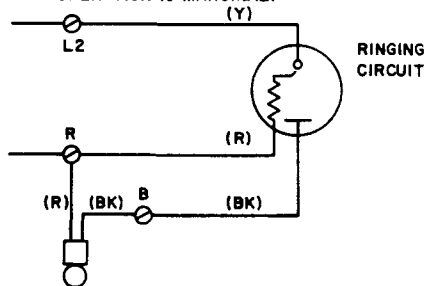
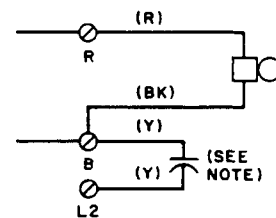


Fig. 6—534DT (MD) Subscriber Set—Polarized Ringing Connections

PARTY	INDIVIDUAL, COIN, OR OTHER BRIDGED STATIONS	RING STATIONS	TIP STATIONS
POSITION		1, 3, 5, 7, 9	2, 4, 6, 8, 10
LEAD	RING	RING	GRD
INSIDE WIRE FROM PROTECTOR OR LINE	(R)	(R)	(Y)
LEAD	TIP	GRD	TIP
	(G)	(Y)	(G)

RINGING CIRCUIT



SUBSCRIBER SET	REPLACED BY
584 DE, DF (MD)	687A

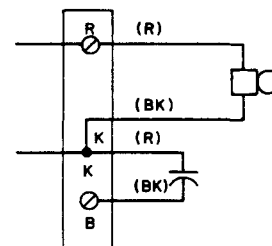
NOTE:

CONDENSER FURNISHED ONLY WITH NO. 584 DE SUBSCRIBER SET.

Fig. 7—584DE (MD) and 584DF (MD) Subscriber Set—Nonpolarized Ringing Connections

PARTY	INDIVIDUAL, COIN, OR OTHER BRIDGED STATIONS	RING STATIONS	TIP STATIONS
POSITION		1, 3, 5, 7, 9	2, 4, 6, 8, 10
LEAD	RING	RING	GRD
INSIDE WIRE FROM PROTECTOR OR LINE	(R)	(R)	(Y)
LEAD	TIP	GRD	TIP
	(G)	(Y)	(G)

RINGING CIRCUIT



SUBSCRIBER SET	REPLACED BY
592A (MD)	LIA RINGER

Fig. 8—592A (MD) Subscriber Set—Nonpolarized Ringing Connections

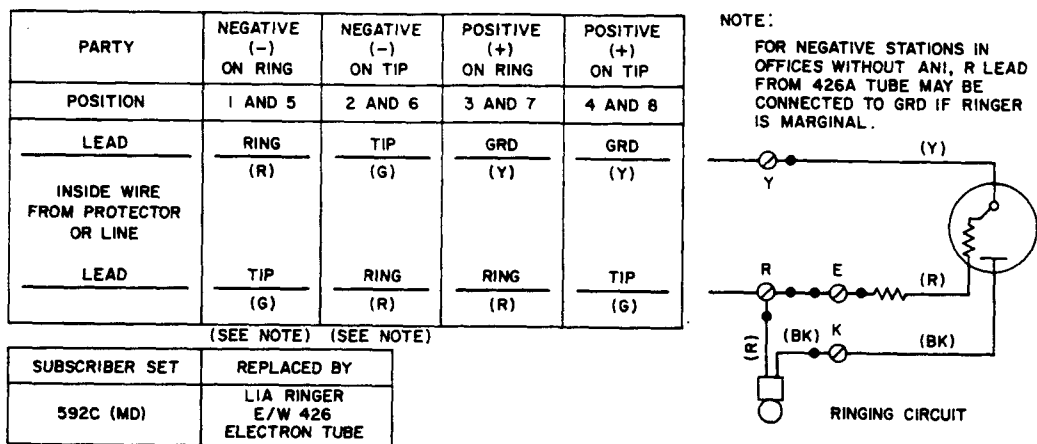


Fig. 9—592C (MD) Subscriber Set—Polarized Ringing Connections

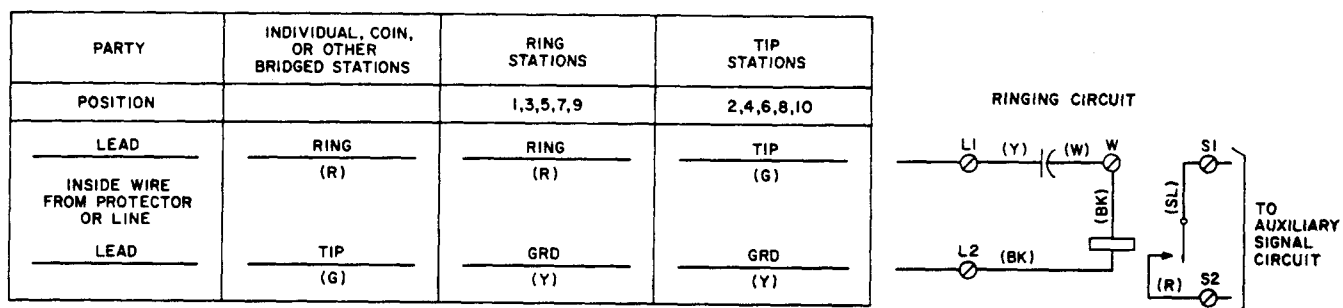


Fig. 10—684BT (MD) Subscriber Set—Connections For Use With Auxiliary Signal

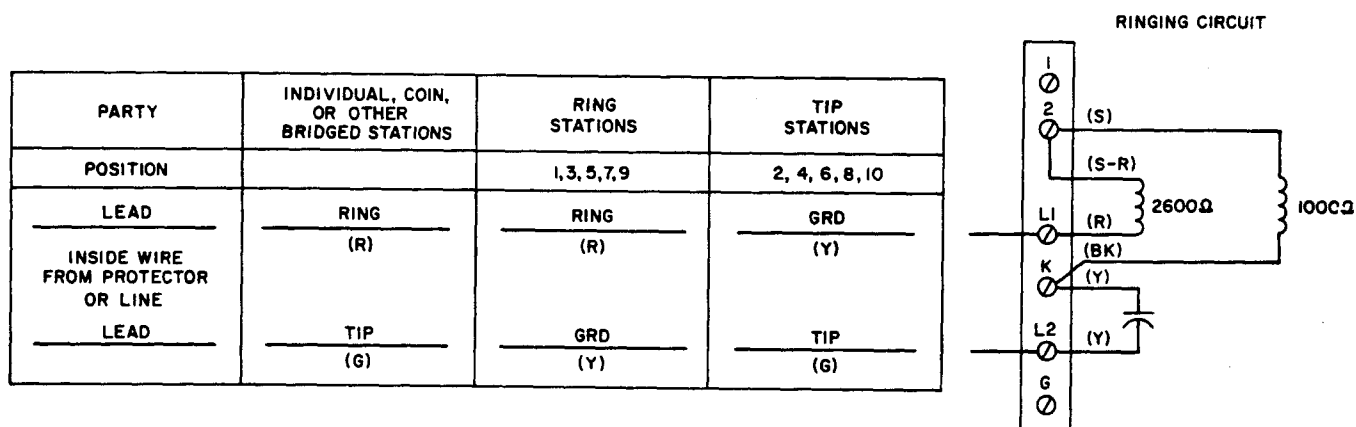


Fig. 11—687A Subscriber Set—Nonpolarized Ringing Connections

SECTION 502-210-400

PARTY	NEGATIVE (-) ON RING	NEGATIVE (-) ON TIP
POSITION	1 AND 5	2 AND 6
<u>LEAD</u>	<u>GRD</u> (Y)	<u>GRD</u> (Y)
INSIDE WIRE FROM PROTECTOR OR LINE		
<u>LEAD</u>	<u>(R)</u> RING	<u>(G)</u> TIP
<u>LEAD</u>	<u>(G)</u> TIP	<u>(R)</u> RING

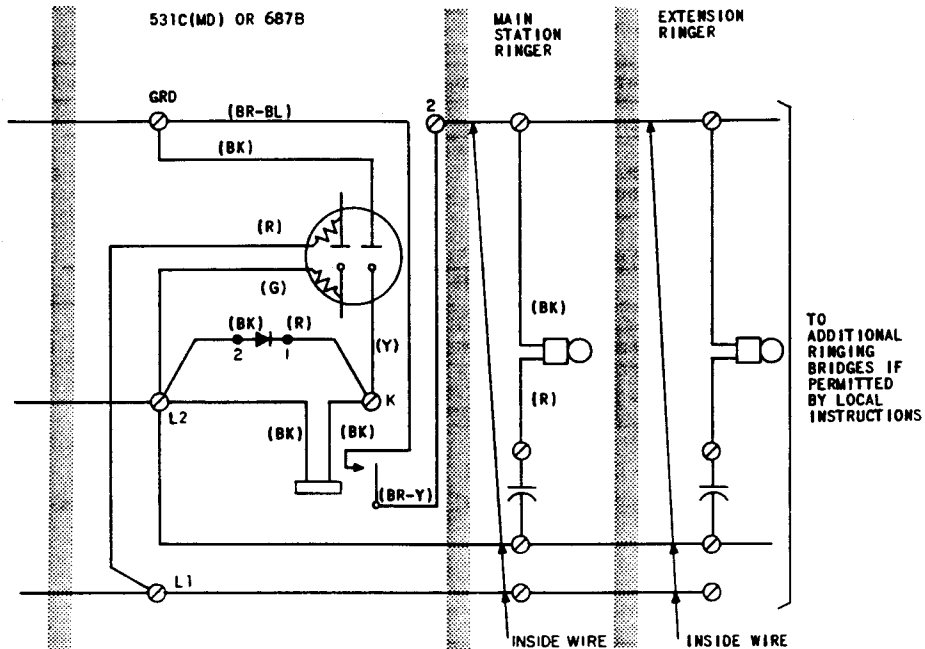


Fig. 12—Modified 531C (MD) or 687B Subscriber Set Connections Negative Parties—Severe Induction

PARTY	POSITIVE + ON RING	POSITIVE + ON TIP
POSITION	3 AND 7	4 AND 8
<u>LEAD</u>	<u>RING</u> (R)	<u>TIP</u> (G)
INSIDE WIRE FROM PROTECTOR OR LINE		
<u>LEAD</u>	<u>(Y)</u> GRD	<u>(Y)</u> GRD
<u>LEAD</u>	<u>(G)</u> TIP	<u>(R)</u> RING

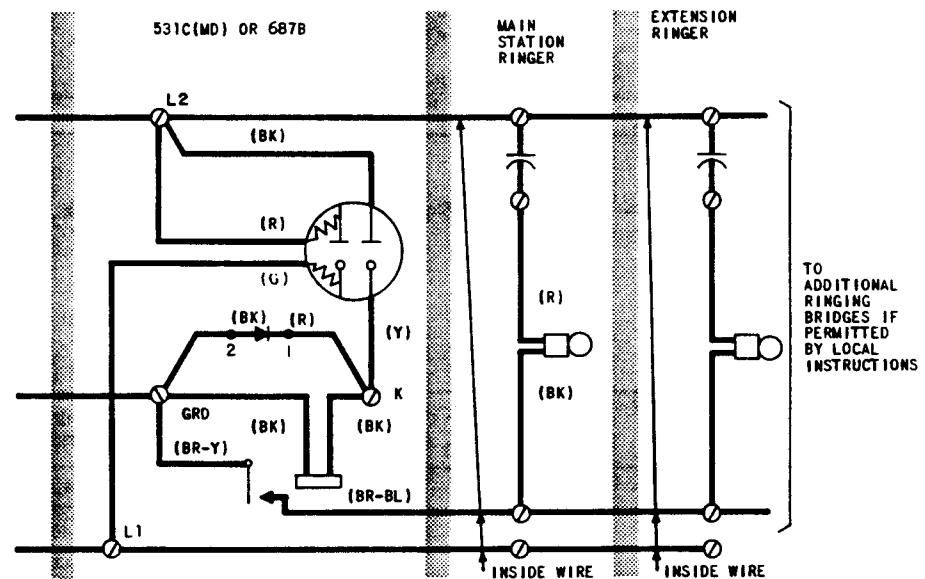


Fig. 13—Modified 531C (MD) or 687B Subscriber Set Connections Positive Parties—Average To Severe Induction