

JACKS AND JACK MOUNTINGS FOR PORTABLE TELEPHONE SETS, OUTDOOR TYPE IDENTIFICATION, INSTALLATION, AND CONNECTIONS

1. GENERAL

1.01 This section is issued to:

- Rearrange information formerly found in Section 461-630-100.
- Show manufacture discontinued (MD) apparatus.

1.02 Some areas require at least one telephone set or ringer connected permanently to the line. Check local instructions governing line ringers.

1.03 Do not use hand telephone sets (those requiring a subscriber set) and telephone sets together in the same jack and plug system.

1.04 Mount jacks in a uniform manner so that plugs can be inserted in the same way throughout the customer's premises.

1.05 Portable telephone sets should be kept indoors when not in use. Advise the customer of the importance of protecting a telephone set from inclement weather in order to maintain good telephone service.

KS-19316, List 4 Housing Fig. 4

KS-19316, List 5 Cover Fig. 5

KS-19316, List 6 Housing Box Fig. 6 and 7

KS-20202, Lists 1 and 2 Housing Fig. 8

(b) *Ordering Guide*

Jack, KS-8420

Jack, KS-8421

Housing, Weatherproof, KS-19316, L4

Cover, Weatherproof, KS-19316, L5

Housing Box, KS-19316, L6

Housing, KS-20202, L1 or L2

Note: If an outdoor switch is required, refer to Section 463-246-100.

2. IDENTIFICATION

(a) *Illustration Index*

KS-8420 Jack Fig. 1

KS-8421 Jack Fig. 2

KS-16151, List 1 Jack (MD) Fig. 3

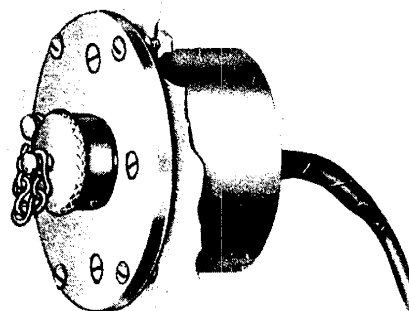


Fig. 1 — KS-8420 Jack, Installed

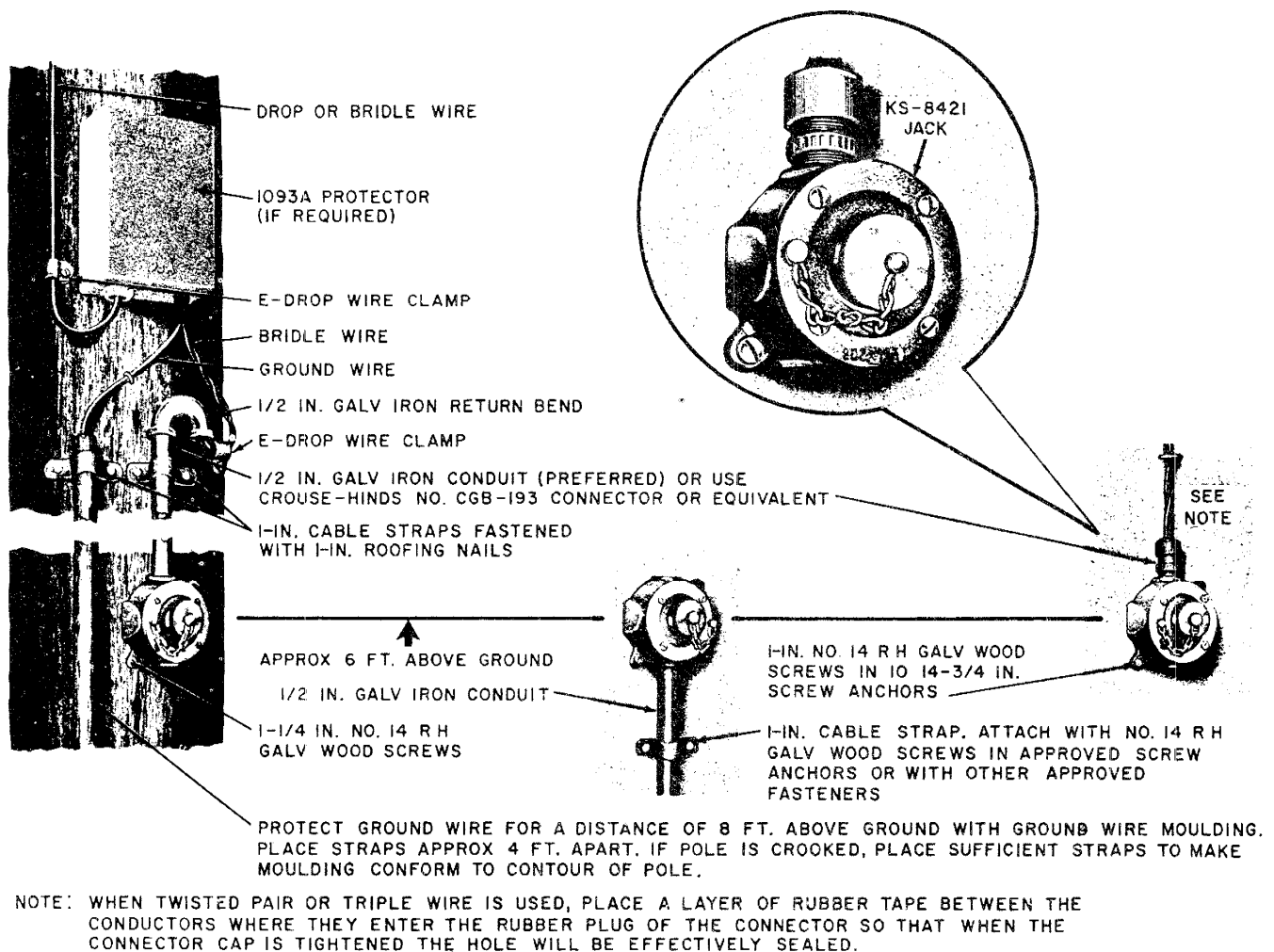


Fig. 2 — KS-8421 Jack, Typical Installation

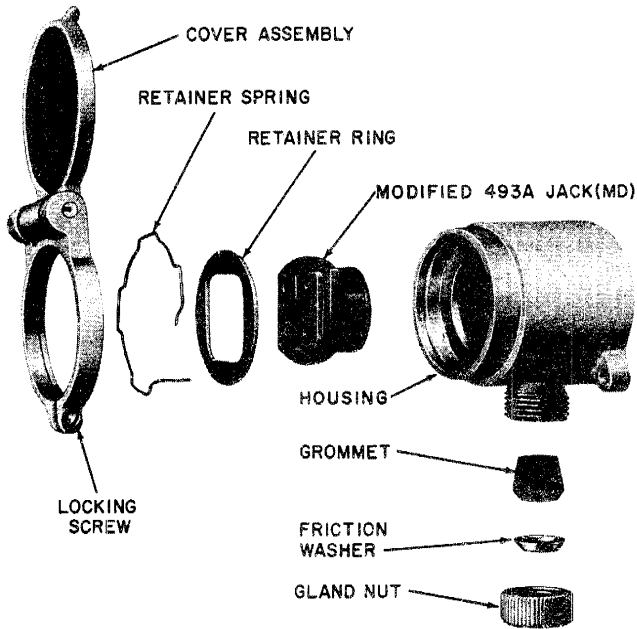


Fig. 3 — Assembly of KS-16151, List 1 Jack (MD)

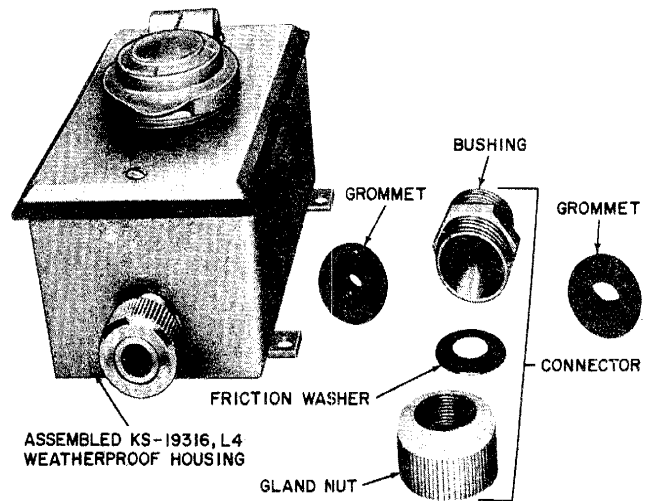
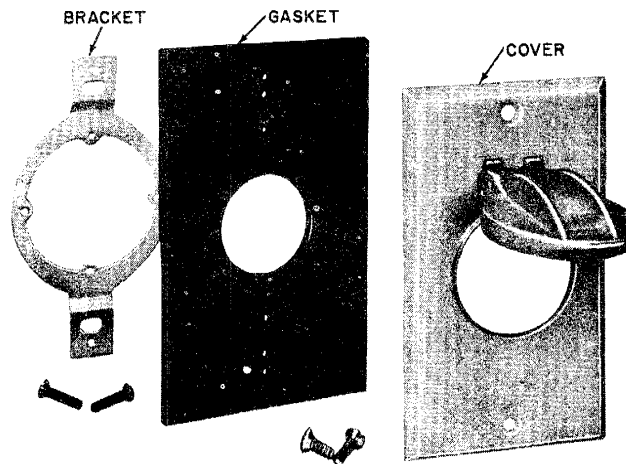


Fig. 4 — KS-19316, List 4 Housing and Components
(2 of 3 Grommets Shown)



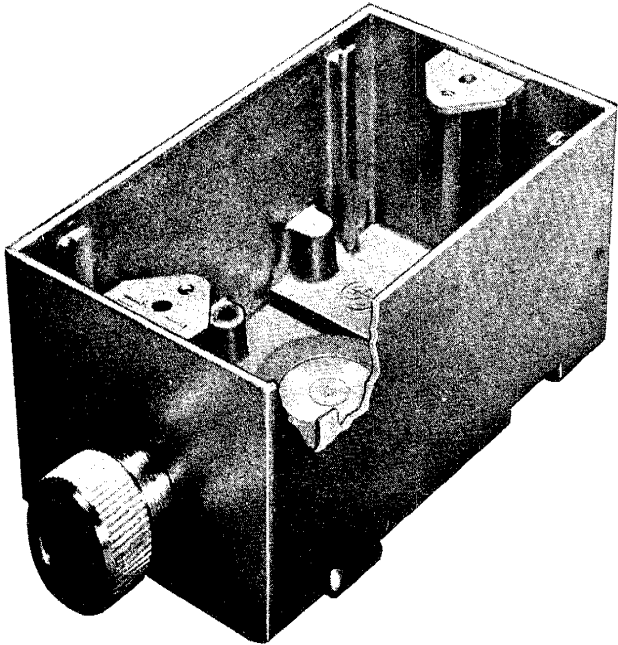
•FOR USE WHERE BOX FOR JACK HAS BEEN
INSTALLED OR REPLACEMENT PARTS
FOR KS-19316, LIST 4.

•ACCEPTS:
493A JACK (MD)
541A JACK
548A JACK

•MOUNTS TO STANDARD
ELECTRICAL OUTLET BOX

•MOUNTING SCREWS SUPPLIED

Fig. 5 — KS-19316, List 5 Cover



- FURNISHED WITH LATER PRODUCTIONS OF KS-19316, LIST 4 HOUSING
- WITH REVERSIBLE MOUNTING LUGS

Fig. 6 — KS-19316, List 6 Housing Box

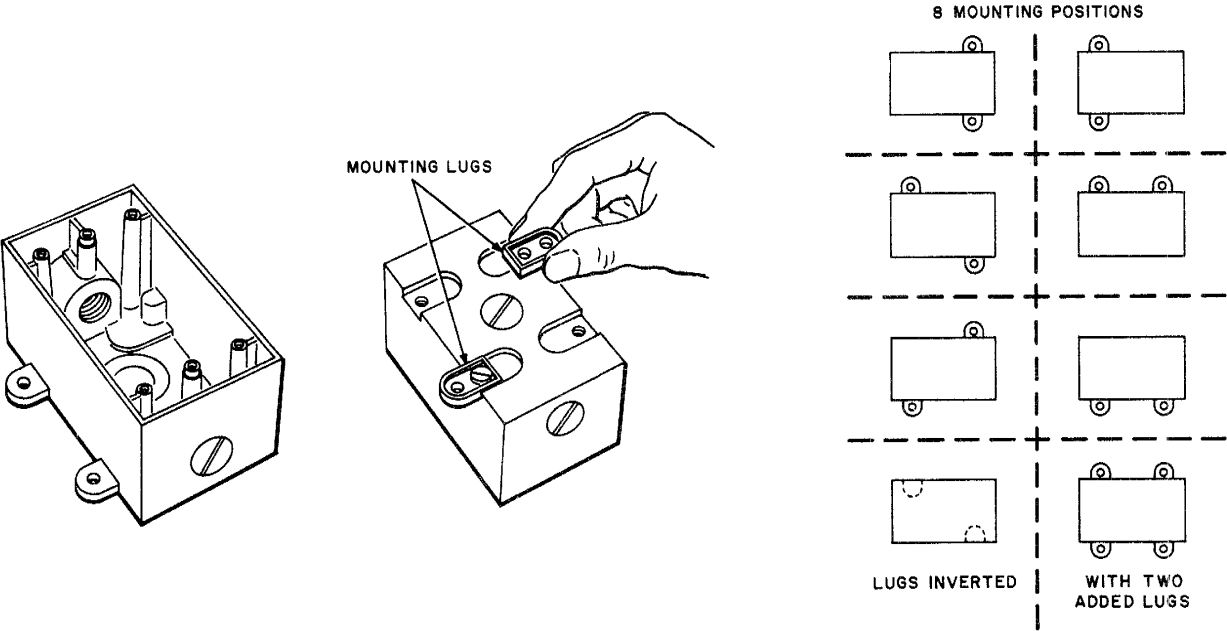


Fig. 7 — Housing Box Showing Reversible Mounting Lugs

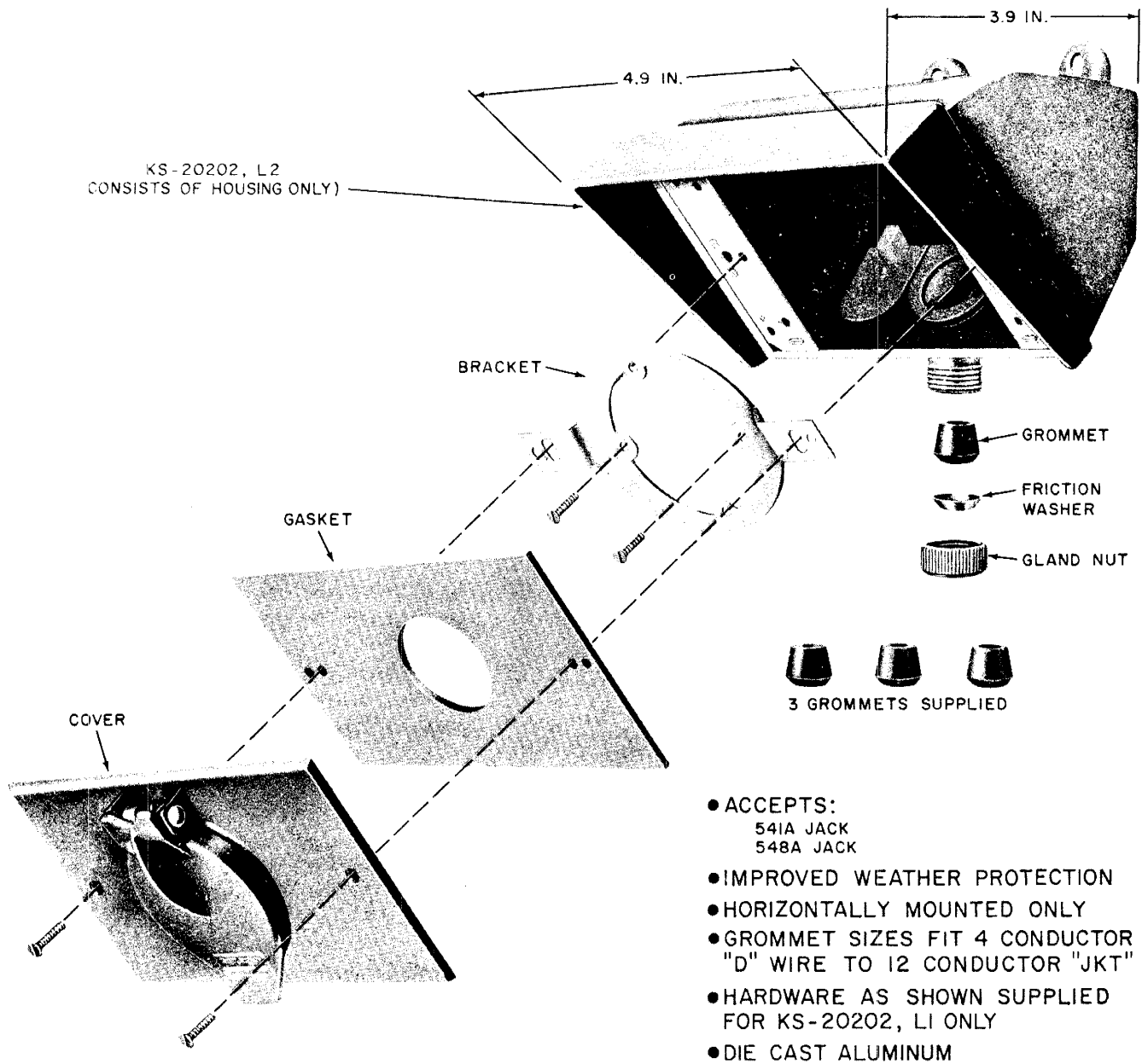


Fig. 8 — Assembly of KS-20202, Lists 1 and 2 Weatherproof Housing

3. INSTALLATION

KS-8420 Jack

3.01 Install as follows:

- (1) Arrange for a 2-11/16 inch hole at location selected for jack installation.
- (2) Temporarily insert jack in hole and mark fastener holes.
- (3) Remove jack and drill fastener holes.
- (4) Connect wire as shown in Fig. 9.
- (5) Secure jack to mounting surface with four No. 8 brass wood screws or No. 8 RH brass machine screws.

KS-8421 Jack

3.02 Install as follows:

- (1) Arrange drop wire or bridle wire and conduit at location selected for installation.
- (2) Secure the jack housing to the mounting surface using suitable fasteners.
- (3) Connect wire to terminal block as shown in Fig. 9.
- (4) Mount terminal block to jack housing.
- (5) Install cover on housing.

KS-16151, List 1 Jack

3.03 Install as follows:

- (1) Arrange drop wire at location selected for installation.
- (2) Hold housing to mounting surface and mark fastener holes.
- (3) Remove housing and drill fastener holes.
- (4) Secure jack to mounting surface with No. 8 brass wood screws or No. 8 RH brass machine screws.

- (5) Place gland nut, friction washer, and grommet onto cable.
- (6) Run cable inside housing and adjust grommet and friction washer for watertight fit with gland nut.
- (7) Connect conductors to 493A jack.
- (8) Install 493A jack, retainer ring, retainer spring, and cover assembly in this order.
- (9) Tighten locking screw.

KS-19316, List 4 Housing

3.04 Install as follows:

- (1) Arrange cable at location selected for jack installation.
- (2) Use housing box with positioned mounting lugs to mark lug mounting holes.
- (3) Drill holes and secure housing box to mounting surface with No. 8 brass wood screws or No. 8 RH brass machine screws.
- (4) Place gland nut, friction washer, and grommet on cable.
- (5) Run cable inside housing and adjust grommet and friction washer for watertight fit with gland nut.
- (6) Attach bracket to housing box.
- (7) Connect wire or cable to jack.
- (8) Install jack to bracket. Supplied cover for 541A jack is not required and may be discarded.
- (9) Install gasket and cover for watertight fit.

KS-20202, List 1 Housing

3.05 Install as follows:

- (1) Arrange cable or drop wire at location selected for installation.
- (2) Hold housing to mounting surface and mark fastener holes.

- (3) Remove housing and drill fastener holes.
- (4) Secure housing to mounting surface with No. 8 brass wood screws or No. 8 RH brass machine screws.
- (5) Place gland nut, friction washer and grommet onto cable or drop wire.
- (6) Run cable or drop wire inside housing and adjust grommet and friction washer for watertight fit with gland nut.
- (7) Install bracket and arrange cable or drop wire through center of bracket.
- (8) Connect conductors to selected jack.
- (9) Install jack to bracket. Supplied cover for 541A jack is not required and may be discarded.
- (10) Install gasket and cover.

4. CONNECTIONS

- 4.01** Figure 9 shows connections for KS-8420 and KS-8421 jacks.
- 4.02** Only one conductor shall be connected to a single clip of a clip-type jack terminal.
- 4.03** For a 4-conductor jack, connect conductor as indicated by the color designator stamped next to the terminals. The red conductor is terminated at the R terminal, etc.
- 4.04** Table A shows the connections for 12-conductor jacks.

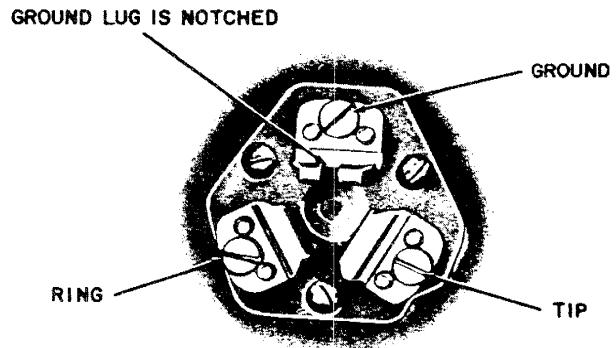


Fig. 9 — Connections for KS-8420 and 8421 Jacks

TABLE A

12 CONDUCTOR JACK CONNECTIONS

D AND E WIRING CABLE	TERMINAL DESIGNATION
BL-W	1
W-BL	2
O-W	3
W-O	4
G-W	5
W-G	6
BR-W	7
W-BR	8
S-W	9
W-S	10
BL-R	11
R-BL	12