

SERVICE

2752-TYPE TELEPHONE SETS

1. GENERAL

1.01 This section provides maintenance and connection information for the 2752-type telephone sets. Maintenance information was previously contained in Section 502-750-102. Connection information was previously contained in Section 502-750-432 which is hereby canceled.

2. MAINTENANCE

2.01 Maintenance performed on customer's premises should be limited to replacement of accessible parts which are available through supply channels.

2.02 Ringers, handsets, dials, etc. used in this type set should be maintained in accordance with sections covering the particular item.

Note: When ringer volume control is set in LOW position only ringer motor noise may be heard because clapper might not strike gong. If bell sound is desired, move control to slightly higher volume position.

2.03 The exterior of the set should be clean and not marred or chipped. The vinyl-faced mat may be cleaned with a water-dampened KS-2423 or equivalent cloth. Replace defective mat as follows:

- (1) Grasp mat retainer frame at top, lift upward and out to release frame from panel of set.
- (2) Remove handset from hook of set.
- (3) Pull out handset cord to allow working slack.
- (4) Remove mat from face of panel.
- (5) Remove grommet from mat as shown in Fig. 1.
- (6) Install grommet in new mat by reversing procedure used in removal.

- (7) Position mat on panel and secure using the mat retainer frame.

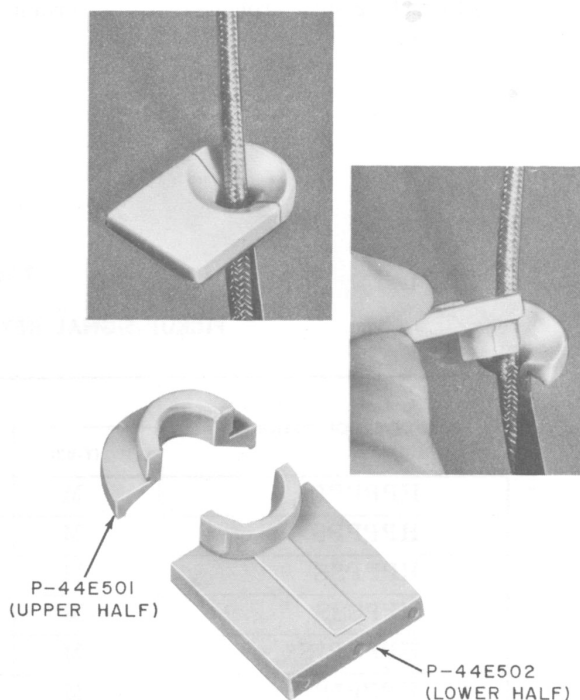


Fig. 1—Removal of Handset Grommet

2.04 To test the cord reel, pull the handset cord out to its maximum length. With the cord maintained perpendicular to the panel, the cord should retract fully. Any twist in the cord should be removed before making test.

2.05 Replace the cord reel if the cord will not retract or if the cord is frayed, kinked, or noisy. Field maintenance of the cord reel, or replacement of the cord, is not recommended.

Note: When replacing the cord reel use either the 3A or 3B when the telephone set

is not subjected to temperatures below 40 degrees F. Below 40 degrees F only the 3A cord reel should be used.

- 2.06** For maintenance information on the 762A loudspeaker and P-29E579 transmitter, refer to appropriate section in Division 512.

3. CONNECTIONS

- 3.01** When a 2752 telephone set is multiplied with sets furnishing speakerphone features, certain

leads must be disconnected, insulated and stored to avoid interference with working circuits. The lead designations of leads to be removed are as follows; T1, R1, AG, S1,1R, S, F1, P1, M2, M1, and S2.

TABLE A
PICKUP-SIGNAL KEY CONVERSION (Note 1)

CONVERSION OPTIONS	635A2 KEY LEADS			STRAP
	(Y-BR)	(BR)	(BR-BK)	(S-R)
HPPPPP	M	M	X	M
HPPPPS	M	M	SG	M
HPPSSS	M	M	X	SG
HPPSSS	M	X	X	SG
HPPPP*S*	M	M	N	5H
HPPP*P*S*	M	X	N	5H
HPP*P*P*S*	X	X	N	5H

* See Note 2.

Notes 1. As furnished, all line keys are arranged for pickup. To convert a key position from pickup (locking) to signal (nonlocking), remove the P28E773 locking pin from plunger at the key position to be converted. To convert a key position from nonlocking to locking, insert P28E773 locking pin.

2. These options are used for private or intercommunicating lines with a common signal key. Use SG lead for common signal ground and S lead of 2nd, 3rd, or 4th pickup key as required. The signal key will operate the signal circuit of the selected line.

TABLE B
CONNECTIONS FOR LINE EXCLUSION

EXCLUSION	KEY TELEPHONE SYSTEM	EXCLUSION KEY LEADS							
		(BL-W)	(W-BL)	(O-W)	(W-O)	(V-BL)	(BL-V)	(V-O)	(O-V)
On any Line	1A	R*	T*	1B†	H*	ET	ER	EH	EB
	1A1 or 1A2	R*	T*	†	H*	ET	ER	EH	EB

* Terminal of line involved.

† Insulated and stored.

‡ When other than Line 1 is excluded, remove O-W cord conductor from terminal 1B; insulate and store. Connect balance lead cord conductor of line involved to terminal 1B.

TABLE C
POLARITY GUARD CONNECTIONS
(P-90D061 GUARD ASSEMBLY)

WIRE OR LEAD		REMOVE FROM	CONNECT TO	
		NET.	POLARITY GUARD	NET.
Dial	(BK)	RR	T	
	(G-W)	C	S	
Line Switch	(W)	C	S	
Polarity Guard	(G)			RR
	(W)			C

Note: For use when specified by local instructions for end-to-end signaling installations.

SECTION 502-738-401

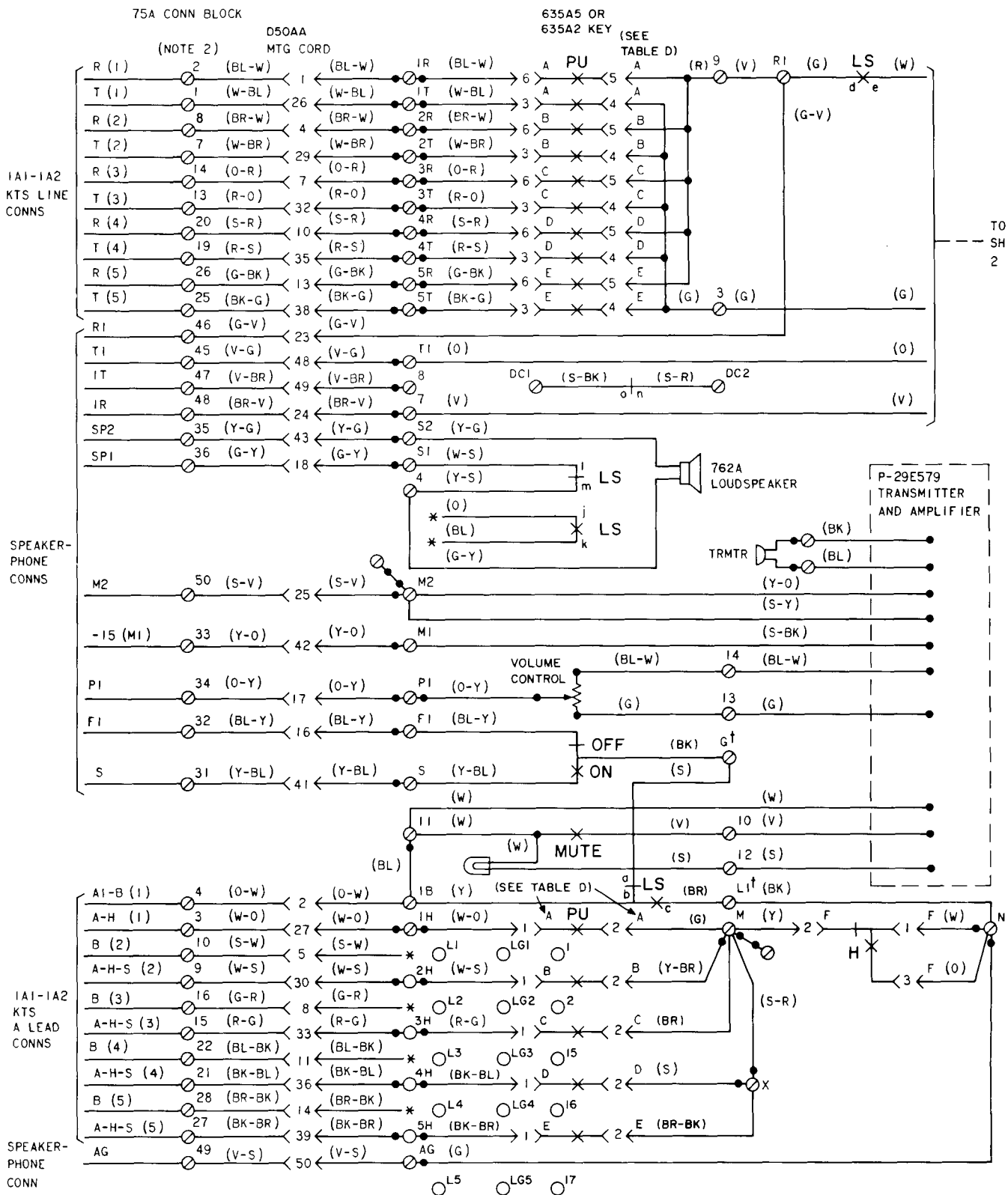


Fig. 2—2752-Type Telephone Set, Connections (Sheet 1 of 2)

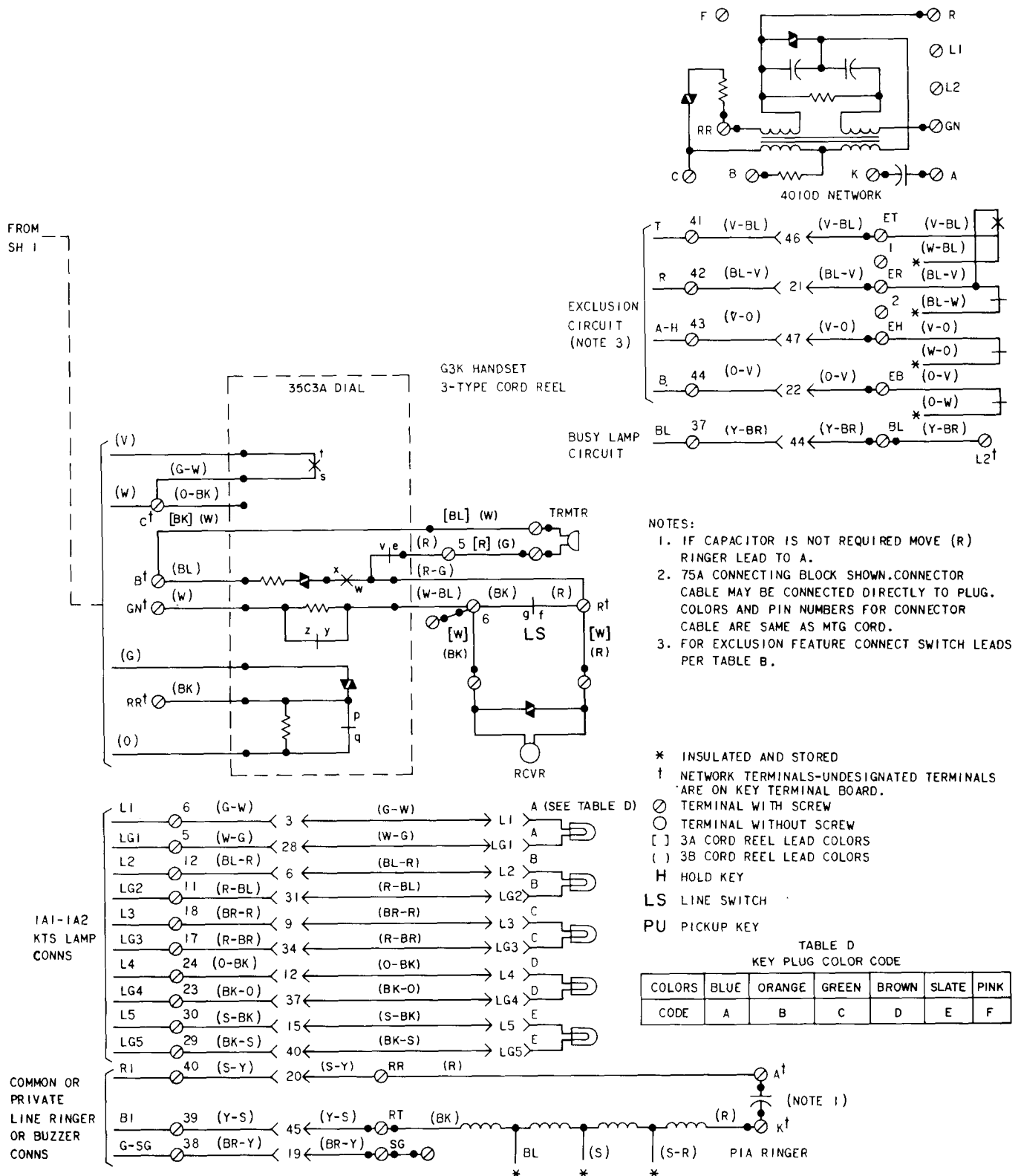
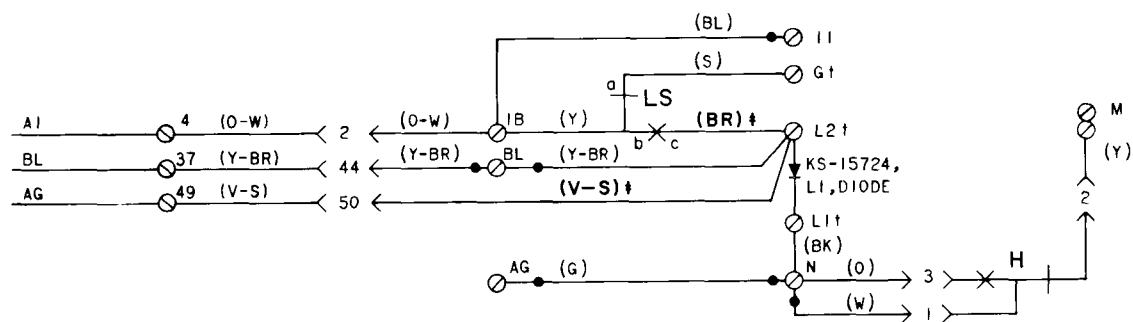
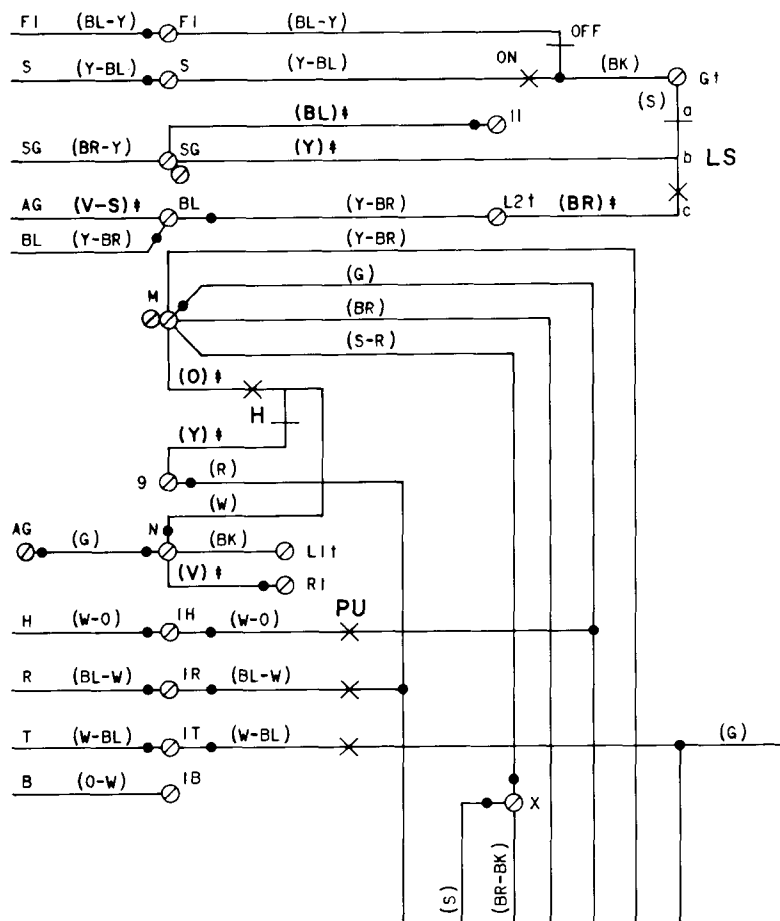


Fig. 2—2752-Type Telephone Set, Connections (Sheet 2 of 2)



A. 1A1-1A2 KTS WIRED FOR BUSY LAMP FEATURE



B. 1A KTS WIRED FOR BUSY LAMP FEATURE

†-NETWORK TERMINAL - UNDESIGNATED
TERMINALS ON KEY TERMINAL BOARD
‡-LEADS INVOLVED IN MODIFICATION
H-HOLD KEY
LS-LINE SWITCH

Fig. 3—2752-Type Telephone Sets, Optional Features