

KS-20255 TELEPHONE KIOSK (DIAMOND KIOSK)

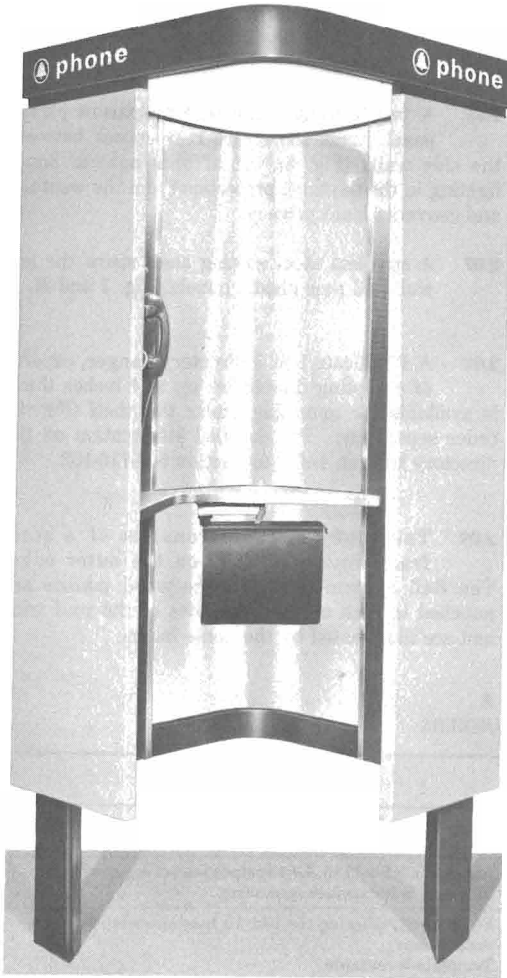


Fig. 1—KS-20255, List 1 Telephone Kiosk

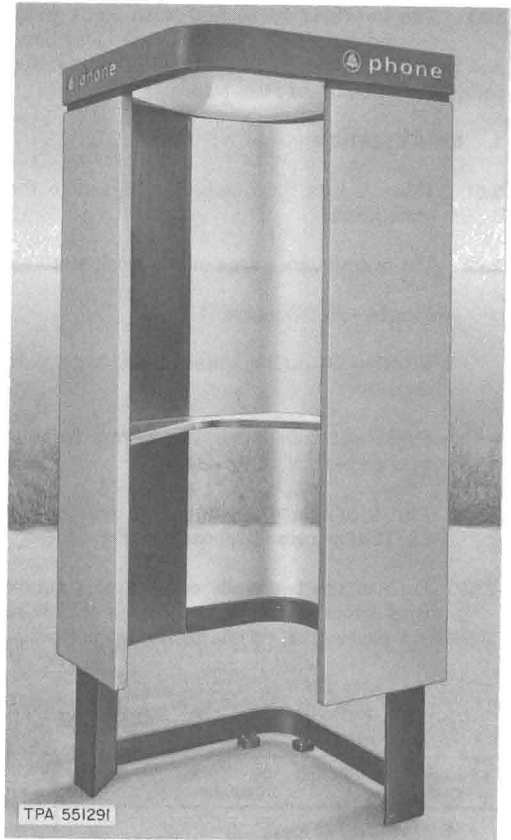


Fig. 2—KS-20255, List 2 Telephone Kiosk

1. GENERAL

1.01 Information in this section was formerly contained in Section 508-355-100 which is hereby canceled.

1.02 The telephone kiosk (Fig. 1 and 2) is an outdoor diamond shaped steel and plastic, doorless phone booth designed for single installation stand-up service. The mounting surface serves as the floor.

1.03 The booth is furnished with light gray colored outside walls and dark gray legs and roof trim. Inside walls consist of perforated satin-finished stainless steel panels.

2. IDENTIFICATION

2.01 Table A lists the numbers assigned to the basic items.

2.02 The overall dimensions of the kiosk are:

- Height—88-1/3 inches
- Width—46 inches (measured from side corners)
- Depth—41 inches (measured from front to rear corner)

2.03 The kiosk is designed for use with a 1A/1C-type coin telephone set (Fig. 7).

2.04 Each of the two walls consists of a curved steel framework, enclosed on the outside by solid steel panels and, on the inside, by perforated

panels. Acoustically treated material lies between the panels.

2.05 These frameworks are mounted on two triangular steel legs (Fig. 4 or 5) which extend up from the mounting surface. Approximately 15 inches of open space exists around the bottom of the booth. Leveling studs are located in the top of these legs.

2.06 A two sectioned curved transparent plastic panel forms the entire rear corner between the side walls (Fig. 8). It affords natural booth lighting in the daytime, protection from the weather, and conversational privacy.

2.07 A stainless steel writing shelf spans the left wall and rear plastic panels (Fig. 1 and 2).

2.08 A KS-20030, List 3 directory hanger, capable of accepting directories up to 4 inches thick, is available for mounting under the shelf (Fig. 9), order separately. For detailed information on the directory hanger, refer to Section 508-710-102.

2.09 The roof assembly consists of a steel framework with trim on the outer edge. The Bell System Seal and the word **phone** are punched in each of the four sides of the roof trim, and are illuminated by the dome lamps.

TABLE A
BASIC LIST NUMBERS

KS-20255 LIST NO.	NAME	FIG.	REMARKS
1	Telephone Kiosk	1	Includes two KS-20255, L13 leg and cover assemblies. Must be mounted on KS-20255, L15 base assembly
2	Telephone Kiosk	2	Includes a KS-20255, L14 surface mount leg assembly. This unit is for surface mounting.
12	Mounting Template	3	For properly aligning the List 15 base assembly during installations. Template is reusable. Order separately
13	Leg and Cover Assembly	4	Component of List 1
14	Surface Mount Leg and Cover Assembly	5	Component of List 2
15	Base Assembly	6	To be embedded in concrete for mounting the List 1 Kiosk. Order separately.
21	Transparent Plastic Panel	8	Upper panel — includes glazing strip
22		8	Lower panel — includes glazing strip

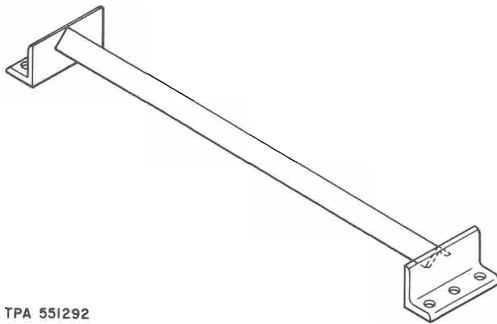


Fig. 3—KS-20255, List 12 Mounting Template

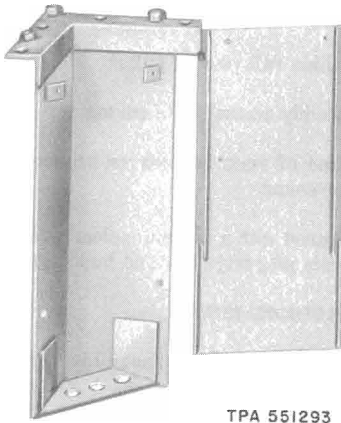


Fig. 4—KS-20255, List 13 Leg and Cover Assembly

2.10 The top dome (roof) is a B-699033 plastic light diffuser which is bonded to the roof assembly with an adhesive sealant and secured with 12 B-699032 retaining clips and 12 No. 8-32 by 3/8 truss head screws (Fig. 10).



Do not remove this diffuser unless it becomes damaged enough to replace.

2.11 The ceiling consists of a B-699034 plastic light diffuser which is held in place by a



Fig. 5—KS-20255, List 14 Surface Mount Leg and Cover Assembly

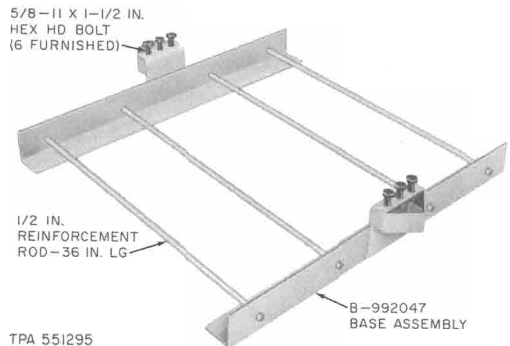


Fig. 6—KS-20255, List 15 Base Assembly

B-699087 retainer assembly and four flathead captive screws (Fig. 11).

2.12 The booth is illuminated by one F36T12/CW/HO and two F24T12/CW/HO fluorescent lamps (Fig. 12).

2.13 A 2-pole, 15-amp pushbutton circuit breaker (Fig. 13) is located under the shelf in the left wall, protected by a rubber rain shield. Access for operating the circuit breaker switch (which is operated by pushing on the rain shield) is through a small sliding door (Fig. 14) in the perforated panel. The circuit breaker and lamps are prewired

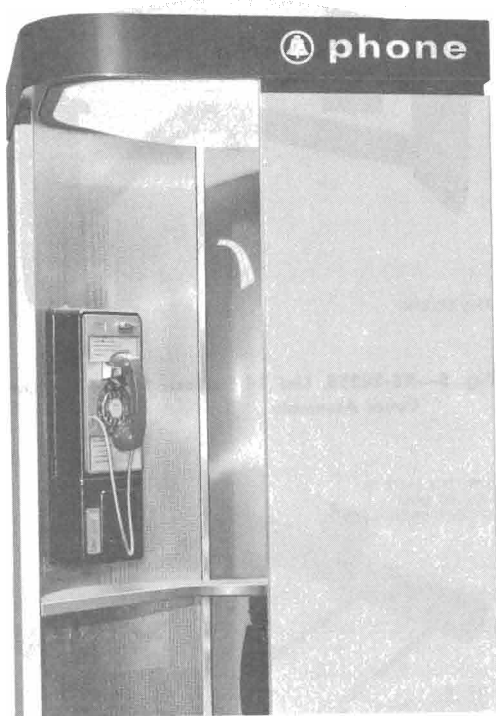


Fig. 7—Telephone Kiosk with 1A/1C Type Coin Telephone Set Installed

for continuous lighting. The KS-19261, List 3 light control must be ordered separately if desired.

2.14 A KS-19261, List 3 light control assembly can be used in conjunction with the circuit breaker. It must be ordered separately. Refer to Section 508-825-100 for complete information on the control unit.

ORDERING INFORMATION

2.15 Following are examples of typical orders:

Example 1

- 1—Kiosk, Telephone, KS-20255, List 1
- 1—Base Assembly, KS-20255, List 15

1—Mounting Template, KS-20255, List 12*

1—Directory Hanger, KS-20030, List 3

Example 2

1—Kiosk, Telephone, KS-20255, List 2

1—Light Control, KS-19261, List 3

1—Directory Hanger, KS-20030, List 3

* It is not necessary to order a mounting template for each booth. One template can be used for many installations.

3. INSTALLATION

3.01 Booth location should be:

- Within full view of public
- Readily accessible to customer
- Free of such hazards as broken or uneven pavement
- Spaced with a minimum clearance of 6 inches from property lines and buildings

LIST 1 TELEPHONE KIOSK

3.02 The List 15 base assembly (Fig. 6), used for mounting the List 1 kiosk, must be ordered separately.

3.03 The two List 13 leg and cover assemblies (furnished with kiosk) are packaged separately and must be assembled in the field.

3.04 The base assembly must be embedded in 6 inches of concrete to provide a permanent foundation for the booth. Position assembly as shown in Fig. 15(A) if concrete serves as kiosk floor or as shown in Fig. 15(B) if some additional material (brick, tile, etc) serves as the floor.

Base Preparation

3.05 Install List 15 base assembly as follows:

- (1) Prepare a form 48 inches square with an inside depth of 12 inches.

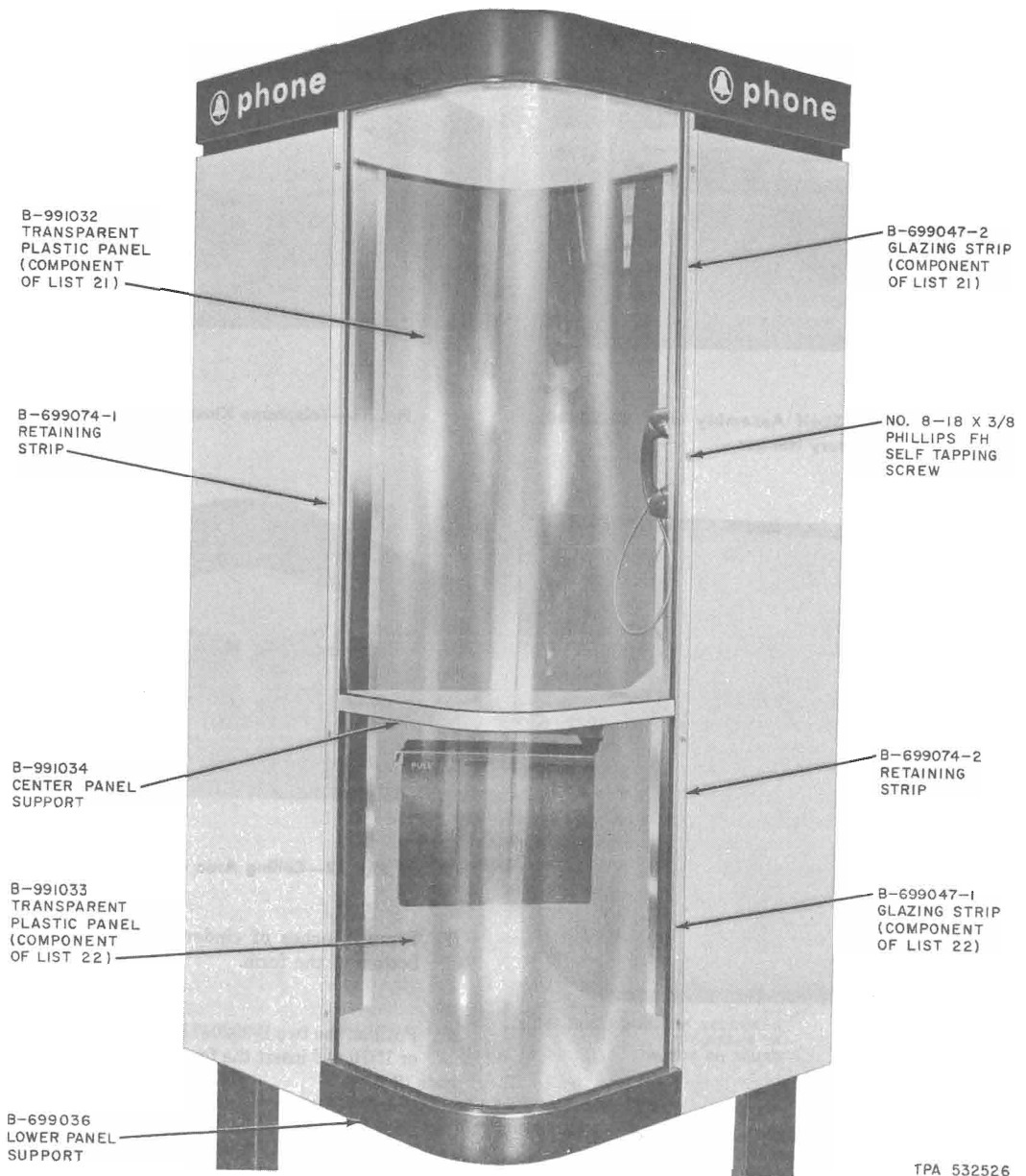


Fig. 8—Telephone Kiosk—Rear View

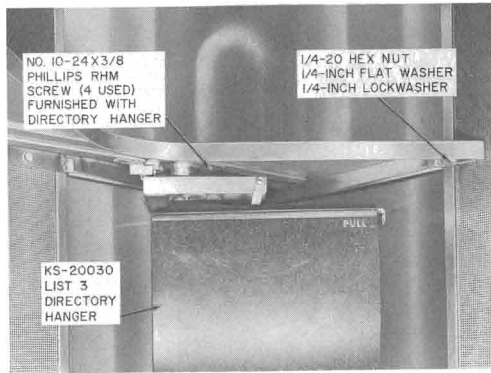


Fig. 9—B-699052 Shelf Assembly with KS-20030, List 3 Directory Hanger

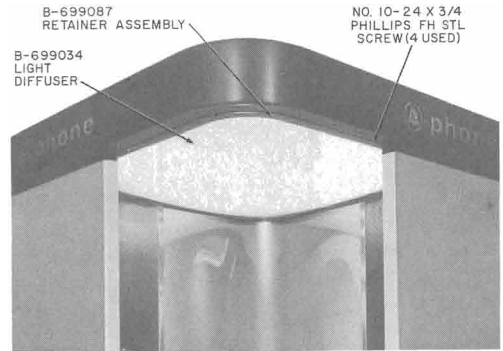


Fig. 11—Telephone Kiosk—Ceiling

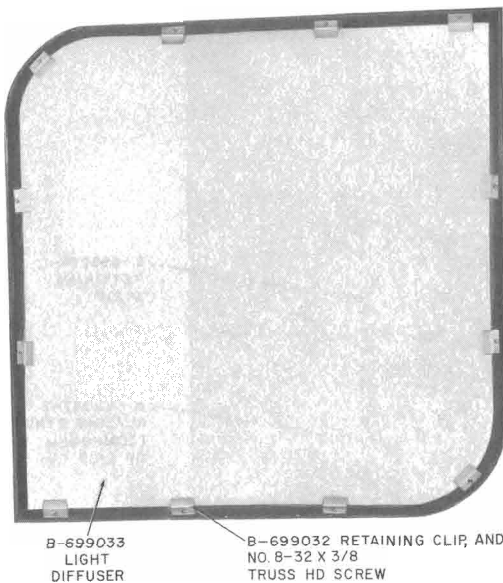


Fig. 10—Telephone Kiosk—Top

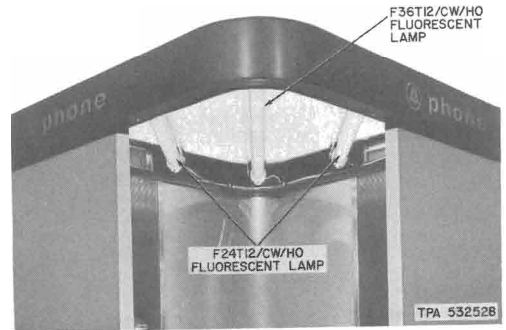


Fig. 12—Ceiling Area of Kiosk

- (2) Tamp 6 inches of cinders or gravel in the bottom of the form.
- (3) Position the two B-992047 bases per Fig. 15(A) or 15(B) and insert the four steel reinforcement rods (Fig. 6).
- (4) Using the six 5/8-11 by 1-1/2 inch bolts furnished with base assembly, install the KS-20255, List 12 mounting template on the two bases to ensure proper alignment.

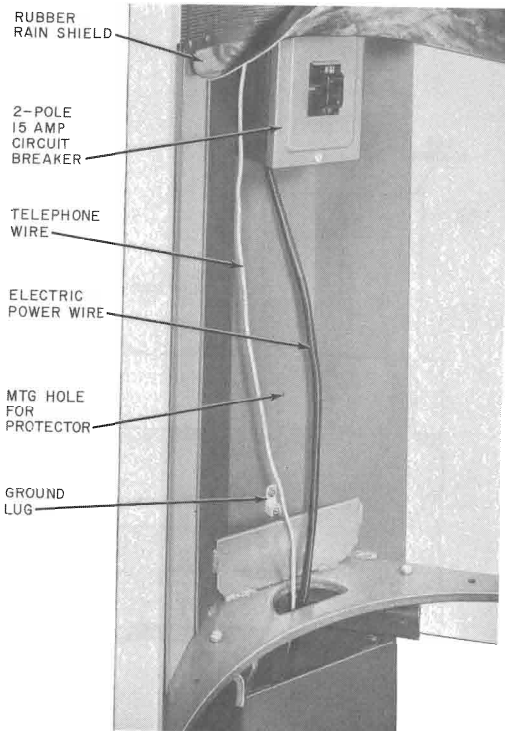


Fig. 13—Left Bottom of Booth With Panel Removed



The template must be ordered separately; however, a template can be used many times.



It is very important that the base assembly is level before pouring concrete. This will reduce leveling problems when the kiosk is mounted on the base.

- (5) All incoming power and telephone wiring enters the kiosk from underground, up through the left leg. Provide conduit for this purpose before pouring concrete.

Note: The ground rod may be located inside the right leg with ground wire secured under one of the mounting bolts.

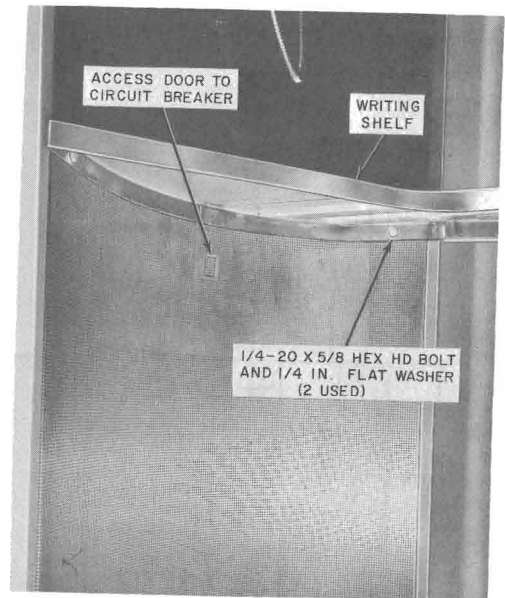


Fig. 14—Lower Left Inside Panel

- (6) Pour concrete around the base to fill the form.
- (7) When concrete has set up, remove and retain the template.

Unpacking and Securing

- 3.06** Prepare kiosk for installing on base assembly as follows:

- (1) The kiosk comes packaged as shown in Fig. 16.
- (2) Before removing any packing material, lay kiosk down with marking "**FRONT OF KIOSK**" facing up (Fig. 17).
- (3) The bottom skid is in two parts. Remove hardware (Fig.17) and detach bottom part of skid (Fig. 18).
- (4) Using eight 1/2-13 by 1-1/2 inch hex head bolts, secure the two List 13 leg assemblies to the kiosk (Fig. 19).

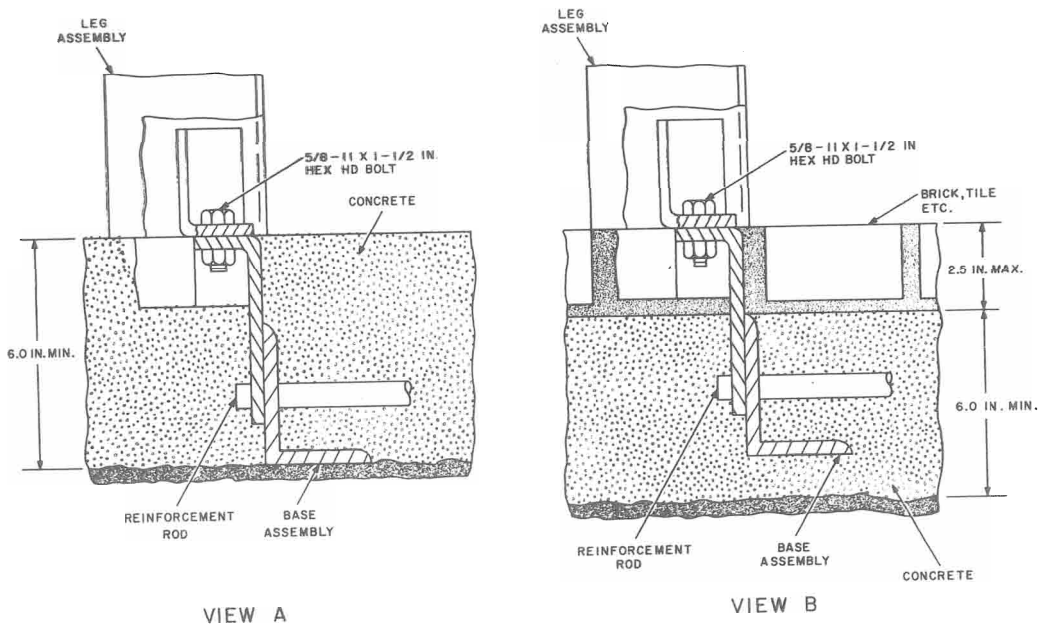


Fig. 15—Positioning Base Assembly in Concrete

THINK *It is important that only high strength, SAE grade 5 bolts, furnished with kiosk, be used.*

- (5) Insert three additional 1/2-13 by 1-1/2 inch hex head bolts in each leg to serve as leveling studs (Fig. 20).
- (6) Raise kiosk into position over base assembly and secure legs to base using six 5/8-11 by 1-1/2 inch hex head bolts (Fig. 21) which are furnished. See **THINK** under (4).
- (7) Do not install leg covers at this time.
- (8) Remove all packing material from kiosk including remaining part of bottom skid.

- (9) Loosen the eight bolts installed in (4) and level the kiosk with the six leveling studs installed in (5). When the kiosk is perfectly level, tighten the eight bolts.

LIST 2 TELEPHONE KIOSK

3.07 The List 14 surface mount leg assembly (furnished with List 2 Kiosk) (Fig. 5) is packaged separately and must be assembled to the kiosk in the field.

Mounting Surface Preparation

3.08 Prepare mounting surface as follows:

- (1) Use the leg assembly as a template and mark the location for six mounting holes

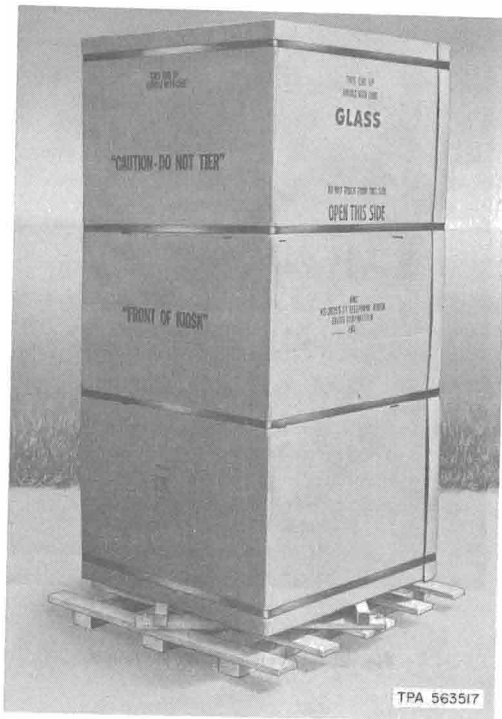


Fig. 16—Kiosk in Packing Case

(two in each leg and two in the cross brace). Also mark location for power and telephone conduit entrance.

Note: Although three holes are in each triangular leg, the center hold in each leg is not to be used because it can weaken the concrete around the holes.

- (2) Move the leg assembly aside and drill the six holes to accept the expansion shield, furnished.
- (3) Install the expansion shields in these holes.
- (4) All incoming power and telephone wiring enters the kiosk up through the left leg; overhead entrance is not provided. Provide

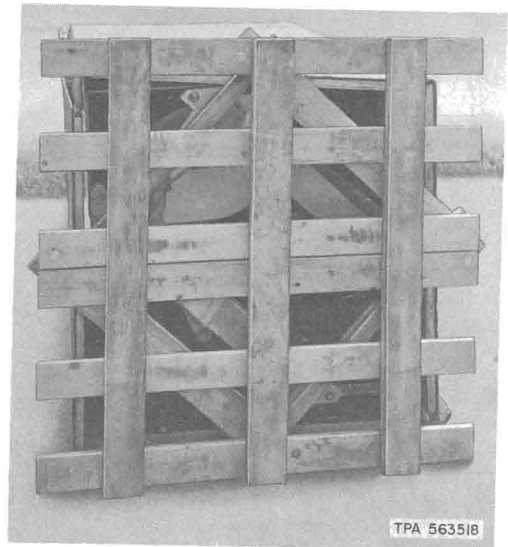


Fig. 17—Kiosk in Horizontal Position

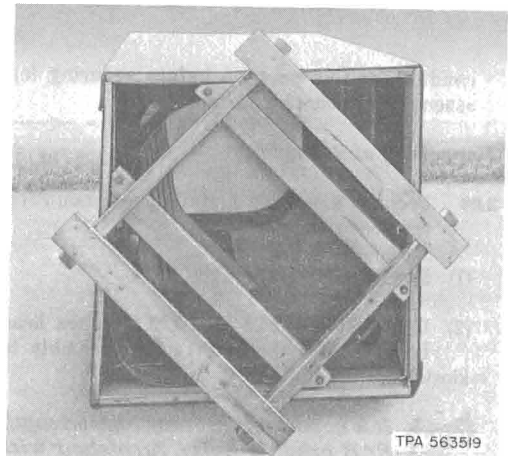


Fig. 18—Bottom Portion of Skid Removed

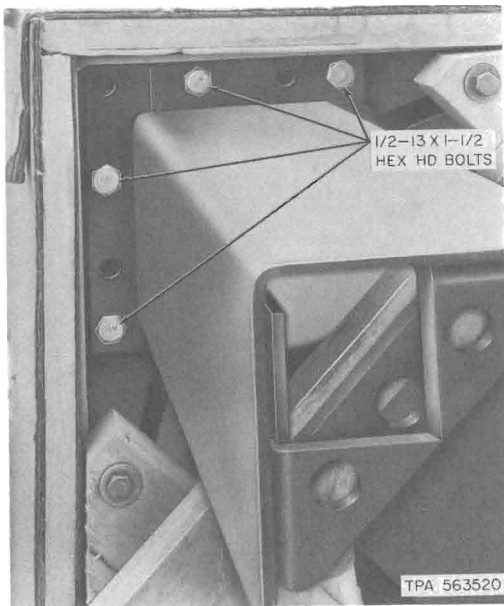


Fig. 19—Securing Leg to Kiosk Frame

conduit for this purpose before securing leg assembly to mounting surface.

Unpacking and Securing

3.09 Prepare kiosk for installing on mounting surface as follows:

- (1) Repeat 3.06 (1) through (3).
- (2) Using eight 1/2-13 by 1-1/2 inch hex head bolts, secure the List 14 leg assembly to kiosk (Fig. 19).

THINK *It is important that only high strength, SAE grade 5 bolts, furnished with kiosk be used.*

- (3) Insert these additional 1/2-13 by 1-1/2 inch hex head bolts in each leg to serve as leveling studs (Fig. 20).
- (4) Raise kiosk into position over mounting surface and secure legs to expansion shields

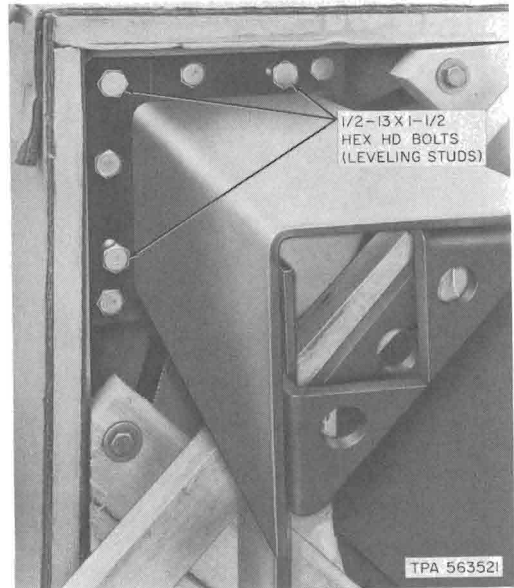


Fig. 20—Leveling Studs Installed

using four 1/2-13 by 2-3/4 inch hex socket-head bolts (Fig. 22). Secure cross brace to expansion shields using two 1/2-inch flat washer and two 1/2-13 by 3-1/2 inch hex socket-head bolts. See **THINK** preceeding (3).

- (5) Repeat 3.06 (7) through (9).

WIRING

Note: The kiosk is provided with underground power and telephone wire entrance only.

3.10 Access to the circuit breaker, ground lug, and mounting holes for the 123A1A protector is obtained by removing the lower left inside wall panel as follows (Fig. 23):

- (1) Remove shelf assembly (refer to 4.09).
- (2) Loosen two No. 8-32 by 1/2 Phillips truss head screws.
- (3) Push latch to right.

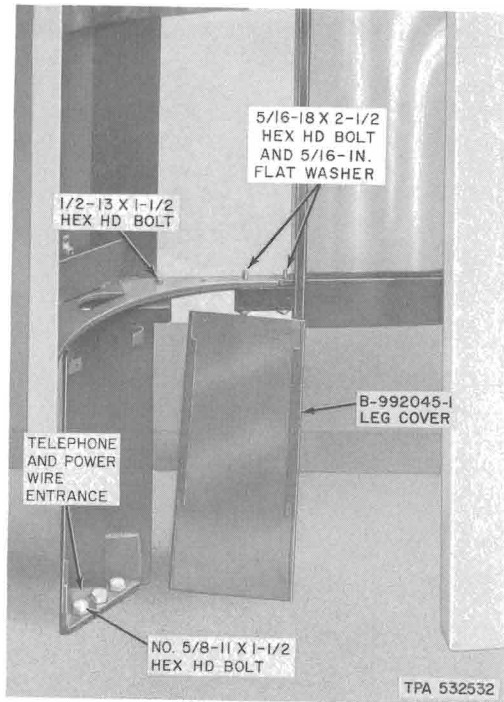


Fig. 21—Assembly of Kiosk, Leg, and Bottom Panel Support

(4) Pull slide angle down and remove panel.

3.11 Install the 123A1A protector (furnished locally) using the mounting holes provided near the circuit breaker (Fig. 13).

3.12 Install the coin telephone set (1A- or 1C-type).

A B-699048 security backboard (Fig. 24) is furnished with the kiosk. Use two P-40Y061 security studs in the upper holes of the set and two P-12E798 security studs in the lower holes of the set. Studs must be furnished locally.



The backboard slides upward to lock the security studs. Access for sliding the backboard is through back of telephone housing behind chassis position.

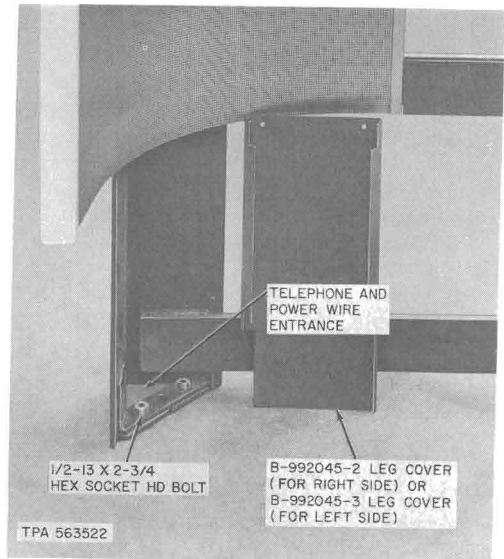


Fig. 22—List 14 Leg Assembly Bolted to Mounting Surface

3.13 Further secure the set using seven P-23F790 1/4-20 by 5/8 RHM screws. Screws are furnished with set.

3.14 Connect the power wires to circuit breaker in accordance with Fig. 25.

3.15 The kiosk is prewired for continuous illumination. If a light control is used, determine that it is working properly by placing hand over light cell. The lamps should illuminate when this is done.

Note: One faulty lamp will prevent all lamps from illuminating.

3.16 Install the leg covers as follows (Fig. 21 and 22):

- (1) Place cover on leg and slide it down until slots on cover and tabs on legs are interlocked.
- (2) Secure cover using two No. 8-32 by 1/2 Phillips RHM screws.

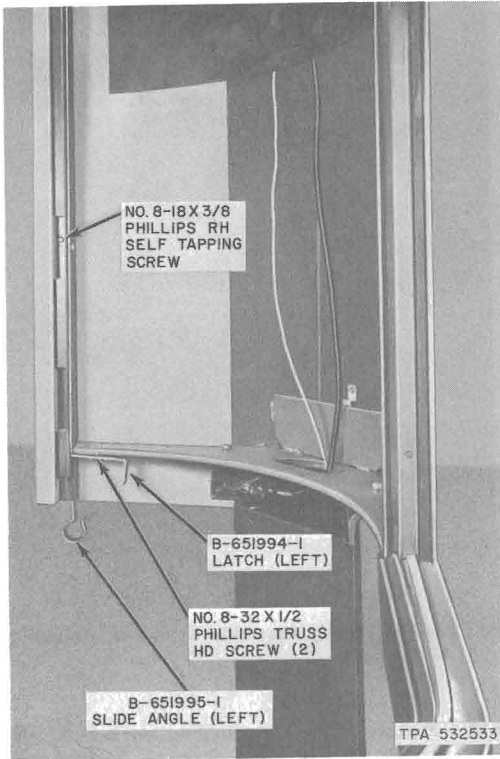


Fig. 23—Apparatus For Securing Panels

(3) Remove, using reverse procedure.

3.17 Install the lower left inside wall panel in reverse order from which it was removed (see 3.10) being careful to place the circuit breaker access door at top (Fig. 14).

4. MAINTENANCE

4.01 The local telephone company shall establish appearance standards of all exposed surfaces.

4.02 The local telephone company shall establish safety standards for all kiosks.

4.03 Inspect the approach to the kiosk and ensure that it is free of all hazards.

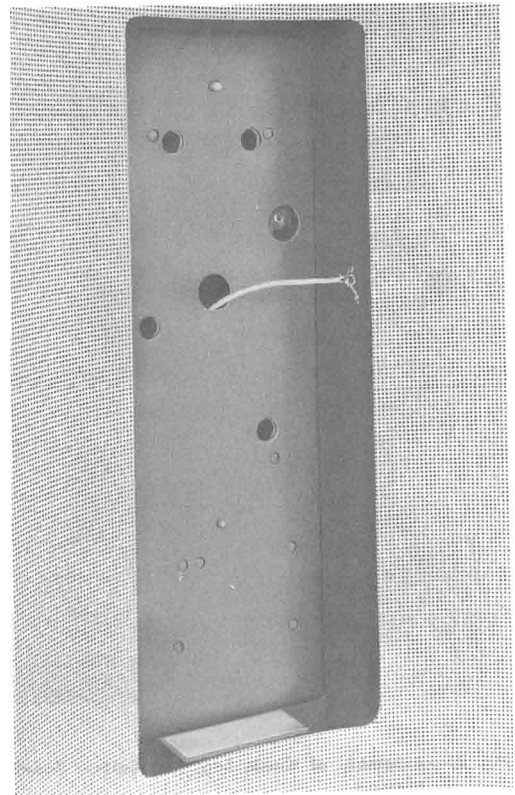


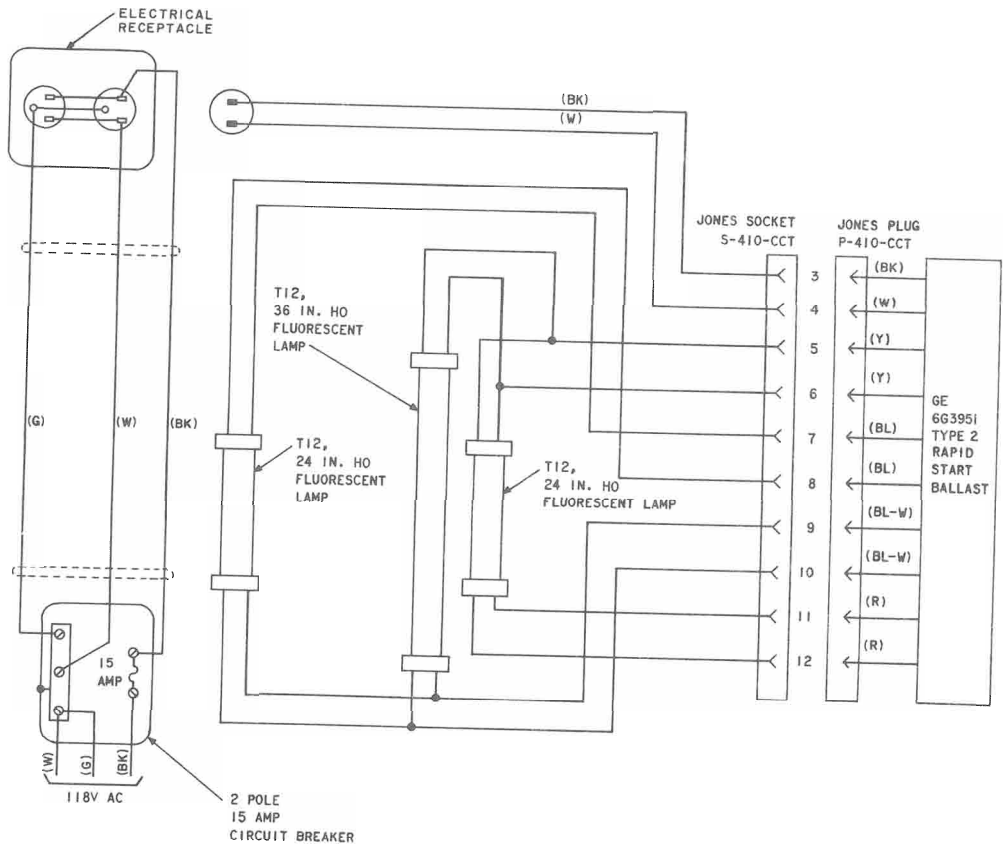
Fig. 24—B-699048 Security Backboard

4.04 Ensure that all visible assembly screws are secure.

4.05 Clean the kiosk in accordance with Section 508-100-101. Transparent plastic panels can be cleaned with mild detergent and soft cloths.

4.06 Replace those parts which are damaged to the point that they do not meet local telephone company standards.

Note: Refer to Part 3 for installation procedures. For access to light control assembly, remove inside upper panel (4.12).



TPA 532534

Fig. 25—Wiring Diagram of Telephone Kiosk

CEILING

- 4.07** Remove bottom light diffuser by loosening four screws and carefully lowering retainer assembly and diffuser together.

TOP DOME

- 4.08** Remove top light diffuser by removing 12 No. 8-32 by 3/8 truss head machine screws and 12 B-699032 retaining clips (Fig. 10).



The top diffuser is bonded to the roof assembly by an adhesive. When replacing this diffuser and the adhesive becomes damaged, use G.E. 108 RTV Clear Silicone Rubber Sealant or an approved equivalent.

SHELF

- 4.09** To remove shelf assembly, remove two 1/4-20 by 5/8 hex head bolts, one 1/4-20 hex nut, three 1/4-inch flat washers, and one 1/4-inch lockwasher (Fig. 9 and 14).

DIRECTORY HANGER

- 4.10** Remove KS-20030, List 3 directory hanger by removing four No. 10-24 by 3/8 Phillips RHM screws and four flat washers (Fig. 9). For complete maintenance information on directory hanger, refer to Section 508-710-102.

INSIDE PANELS

- 4.11** Remove lower left inside panel per 3.10 and 3.17.
- 4.12** Replace upper left inside panel in the same manner as lower left inside panel (3.10 and 3.17).
- 4.13** Replace right inside panel in same manner as left inside panels.

OUTSIDE PANELS

- 4.14** Replace each of the outside panels as follows:
- (a) Remove appropriate inside panel(s).

- (b) Remove the No. 8-18 by 3/8 Phillips RH self-tapping screws (Fig. 23) located along door facing.
- (c) Remove four No. 8-18 by 3/8 Phillips FH self-tapping screws and remove retaining strip (Fig. 8).
- (d) Pull panel out at door facing, swing around toward back of booth, and lift off.
- (e) Install, using reverse procedure.

TRANSPARENT PANELS

- 4.15** Replace B-991033 panel (lower) as follows:

- (a) Loosen four 5/16-18 by 2-1/2 hex head bolts (Fig. 21) which secure lower support to frame.
- (b) Remove retaining strips as directed in 4.14(c).
- (c) Remove panel and B-699047-1 glazing strip (Fig. 8).
- (d) Install, using reverse procedure.

- 4.16** Replace B-991032 panel (upper) as follows:

- (a) Remove B-991033 panel as directed in 4.15.
- (b) Loosen two No. 8-18 by 3/8 self-tapping screws which secure center support.
- (c) Remove panel and B-699047-2 glazing strip (Fig. 8).
- (d) Install, using reverse procedure.

REPLACEMENT PARTS

- 4.17** Table B lists replacement parts that may be ordered as necessary.

**TABLE B
REPLACEMENT PARTS**

NAME	PART NO. OR DESCRIPTION	REMARKS	
Ballast, rapid start	G. E. Co. No. 6G-3951, type 2 (or equivalent)	Located behind right-inside panel	
Circuit breaker	ITE Circuit Breaker Co. No. P-215, 2-pole, 15 amp (or equivalent)	Located behind lower-left inside panel	
Cover, leg	B-992045-1	Component of List 13 leg and cover assembly (used with List 1 Kiosk)	
	B-992045-2	Component of List 14 surface mount leg assembly used with List 2 Kiosk	For right leg
	B-992045-3		For left leg
Diffuser	B-699033	Top	
	B-699034	Interior	
Diffuser and Retainer Assembly	B-699748	Consist of the B-699034 interior diffuser and B-699087 retainer assembly	
Directory hanger	KS-20030, List 3		
Frame, sign	B-699982	For holding sign in place	
Gasket	B-699980	Used with B-699981 sign	
Lamp, fluorescent	F24T12/CW/HO	High output (2 used)	
	F36T12/CW/HO	High output	
Light control	KS-19261, List 3	See Section 508-825-100	
Panel	B-699058	Outside, left side	
	B-699059	Outside, right side	
	B-699075	Inside, right	
	B-699076	Inside, upper left	
	B-699077	Inside, lower left	
	B-991032	Upper, transparent* (component of List 21)	
	B-991033	Lower, transparent* (component of List 22)	
Retainer (12)	B-699032	Secures top light diffuser	
Retainer assembly	B-699087	Secures interior diffuser	
Retaining strip	B-699074-1	Secures transparent panel in right wall	
	B-699074-2	Secures transparent panel in left wall	
Shelf assembly	B-699052	Does not include directory hanger	
Sign assembly	B-699981	Includes Bell System emblem plus "P" and "O" islands	
Strip, glazing	B-699047-1	For lower transparent panel (component of List 22)	
	B-699047-2	For upper transparent panel (component of List 21)	
Support, transparent panel	B-699036	Bottom	
	B-991034	Center	

* Transparent panels were formerly glass. Currently they are plastic.