

8A ANNOUNCEMENT SYSTEM

USING KS-16765, LIST 1 ANNOUNCEMENT SET OR 2-TYPE TELEPHONE ANSWERING SET

1.00 INTRODUCTION

1.01 This section is issued to include the use of the KS-16765, List 1 announcement set in the 8A announcement system.

1.02 This section covers the description, identification, installation, connections, operating procedure, and maintenance information for the 8A announcement system using the KS-16765, List 1 announcement set or the 2-type telephone answering set (announcement set).

Note: The 8A announcement system is also arranged for use with the central-office-located KS-16534 recorder-reproducer. For adaptation of this arrangement, see section entitled 8A and 9A Announcement Systems, Station Control Apparatus.

1.03 When reference is made to *announcement set* in this practice, it means either the KS-16765, List 1 announcement set or the 2-type telephone answering set.

1.04 SD-95286-01 and its associated Circuit Description will be helpful when working with the KS-16765, List 1 announcement sets.

2.00 GENERAL

2.01 The 8A announcement system is a public announcement system primarily used for short-interval customer-sponsored announcements. When used with an announcement set, it is capable of delivering 20 simultaneous announcements. The system offers a choice of single- or dual-channel operation with customer control. It may be used for such announcement services as:

- Theater time schedules.
- Prayer of the day.
- Sales information.

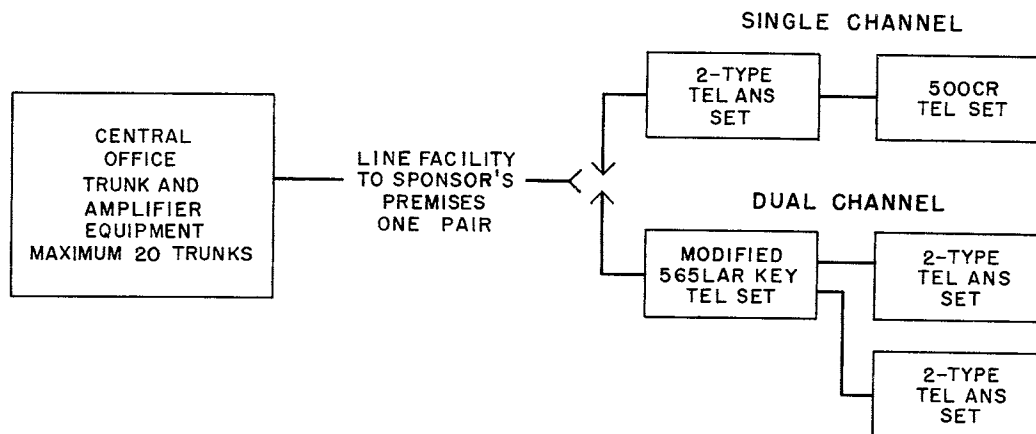


Fig. 1 — Block Diagram of 8A Announcement System Using 2-Type Telephone Answering Set

2.02 Single channel has a 2-type telephone answering set with 500CR-type telephone set (Fig. 1) or KS-16765, List 1 announcement set with a modified 565GBR key telephone set (Fig. 2).

2.03 Dual channel has two 2-type telephone answering sets with a modified 565LAR key telephone set (Fig. 1) or two KS-16765, List 1 announcement sets with a modified 565GBR key telephone set and 6017E key (Fig. 2). This equipment is located on the sponsor's premises and coupled to a single distribution amplifier in the central office by telephone plant facilities (one

pair). Dual-channel operation is intended where no service interruption is desired while a new announcement is being recorded and checked.

2.04 The sponsor's attendant may perform the following functions:

- Dictate an announcement on one machine while the other is in service.
- Check announcement text on either announcement set.
- Transfer either announcement set to line facility.

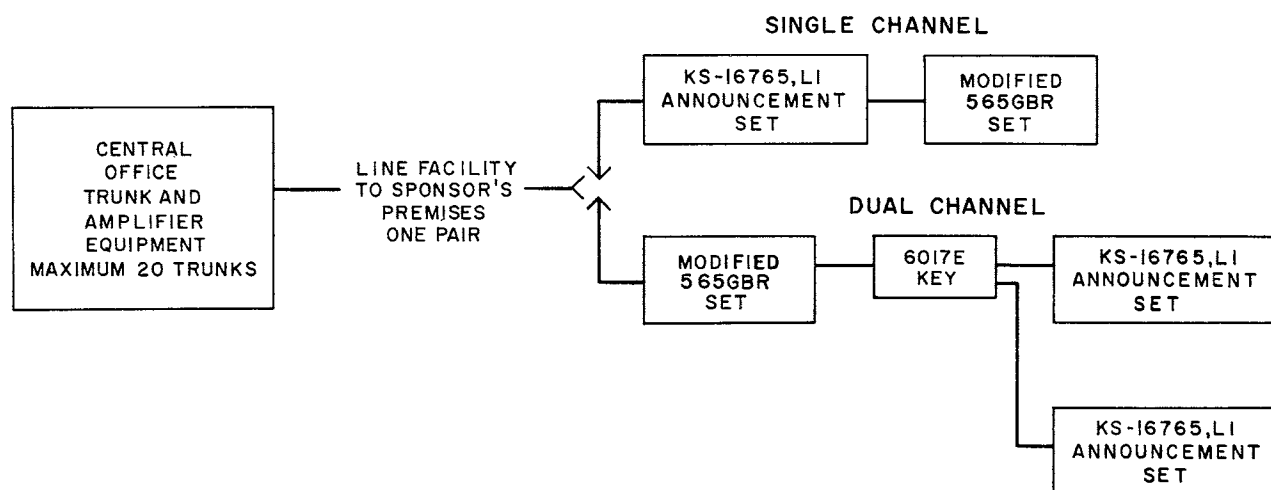
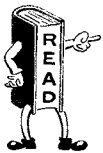


Fig. 2 — Block Diagram of 8A Announcement System Using KS-16765, List 1 Announcement Set

- Receive an audible signal from the ringer in the telephone set during a commercial power failure, or failure of either or both announcement sets to indicate that a call is waiting for announcement.
- Make a live announcement in case of commercial power failure, or failure of one or both announcement sets.

2.05 Announcements may be recorded from an external speech source, such as tape recorder, when the KS-16765, List 1 set is used.



Such installations must be engineered locally to meet individual requirements.

3.00 IDENTIFICATION

Components used for announcement service in the 8A announcement system are identified in the sections entitled:

- Telephone Sets, 500, 501, 507, 509, 532, 533, 535, 536, 554, and 556 Types, Identification and Assembly of Parts
- Telephone Sets, 540 and 560 Types, Identification and Assembly of Parts
- KS-16765, List 1 Announcement Set—Identification and Assembly of Parts
- 2A Telephone Answering Set, Identification and Assembly of Parts.

4.00 INSTALLATION

4.01 Drop, block, and inside wiring are installed in the standard manner. Provide station protection where specified on service order.

Note: See the section entitled Special Safeguarding Measures (SSM) and Special Service Protection (SSP).

4.02 Installation of the announcement sets is covered in sections entitled:

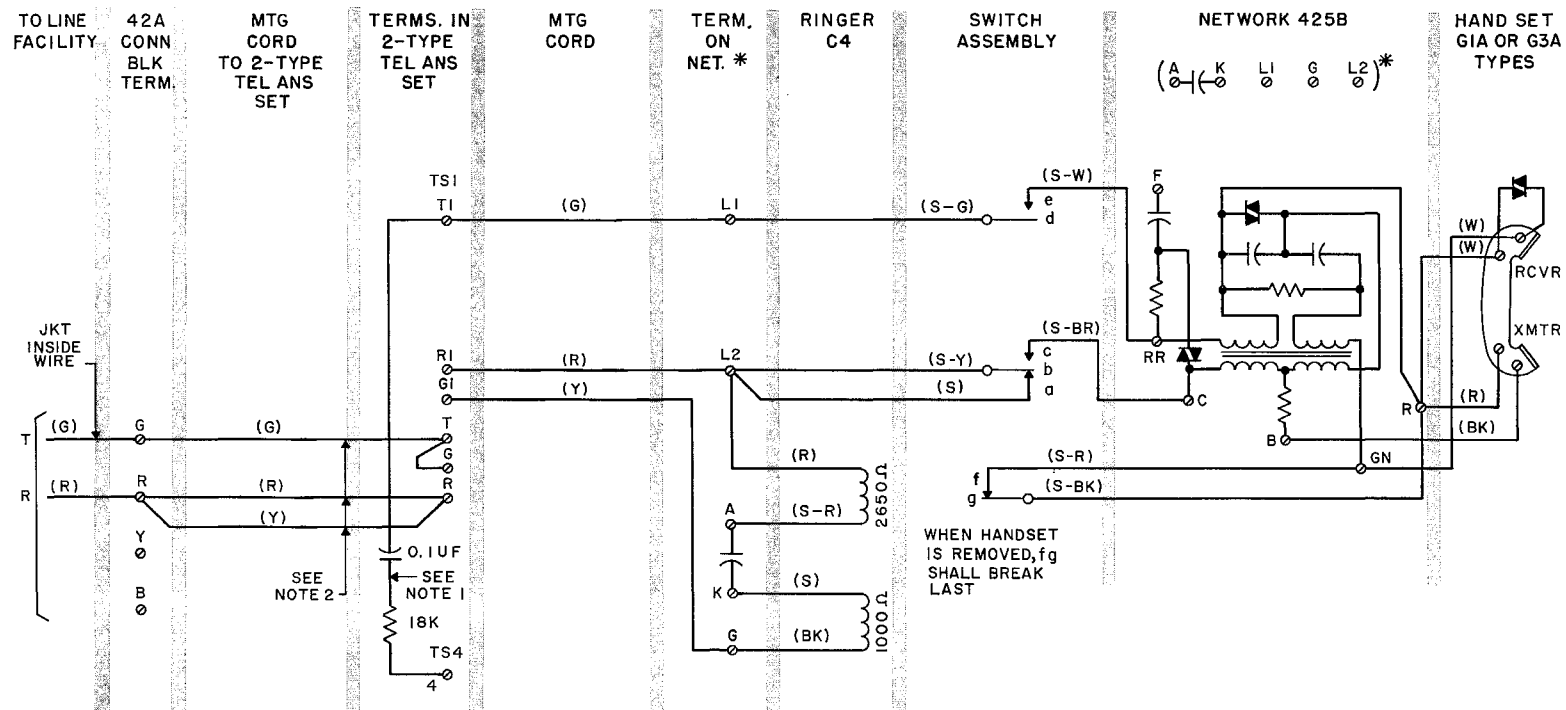
- KS-16765, List 1 Announcement Set, Installation and Connections
- 2A Telephone Answering Set, Installation.

Note: The sponsor shall furnish and maintain the commercial power (105- to 125-volt 60-cycle ac). The convenience outlet shall be within 5 feet of the announcement set; it shall not be under control of a switch. It is not necessary that the convenience outlet be on a separate circuit; however, the additional power consumption of the announcement set, especially on the start cycle, should not cause the operation of the protection device in the commercial power fuse cabinet.

4.03 Announcement sets are connected to connecting block by the use of standard mounting cords.

- A single-channel operation with 2-type telephone answering set uses a D3BK cord. The yellow and green conductors are terminated together.
- Dual-channel operation with 2A telephone answering sets uses two D6W cords.

4.04 Modifications of the telephone sets are shown in Tables A, B, and C. Connections for single and dual channels are shown in Fig. 3, 4, 5, and 6. The mounting cords of the key telephone sets shall be terminated in the standard manner using five 44A connecting blocks.



Note 1: To provide the monitoring feature on 2A telephone answering set, connect an 18,000-ohm resistor (KS-13490, List 3, manufactured by Allen Bradley or I. R. C., rated $\frac{1}{2}$ watt $\pm 20\%$) in series with 0.1-uf capacitor (65P10492 manufactured by Sprague Electric Co), from terminal 4 on TS4 to terminal T1 on TS1.

Note 2: Use standard 3-conductor 5-ft 6-in. mounting cord (D3BK).

Fig. 3 — Connection Diagram for Single-Channel Service with 2-Type Telephone Answering Set

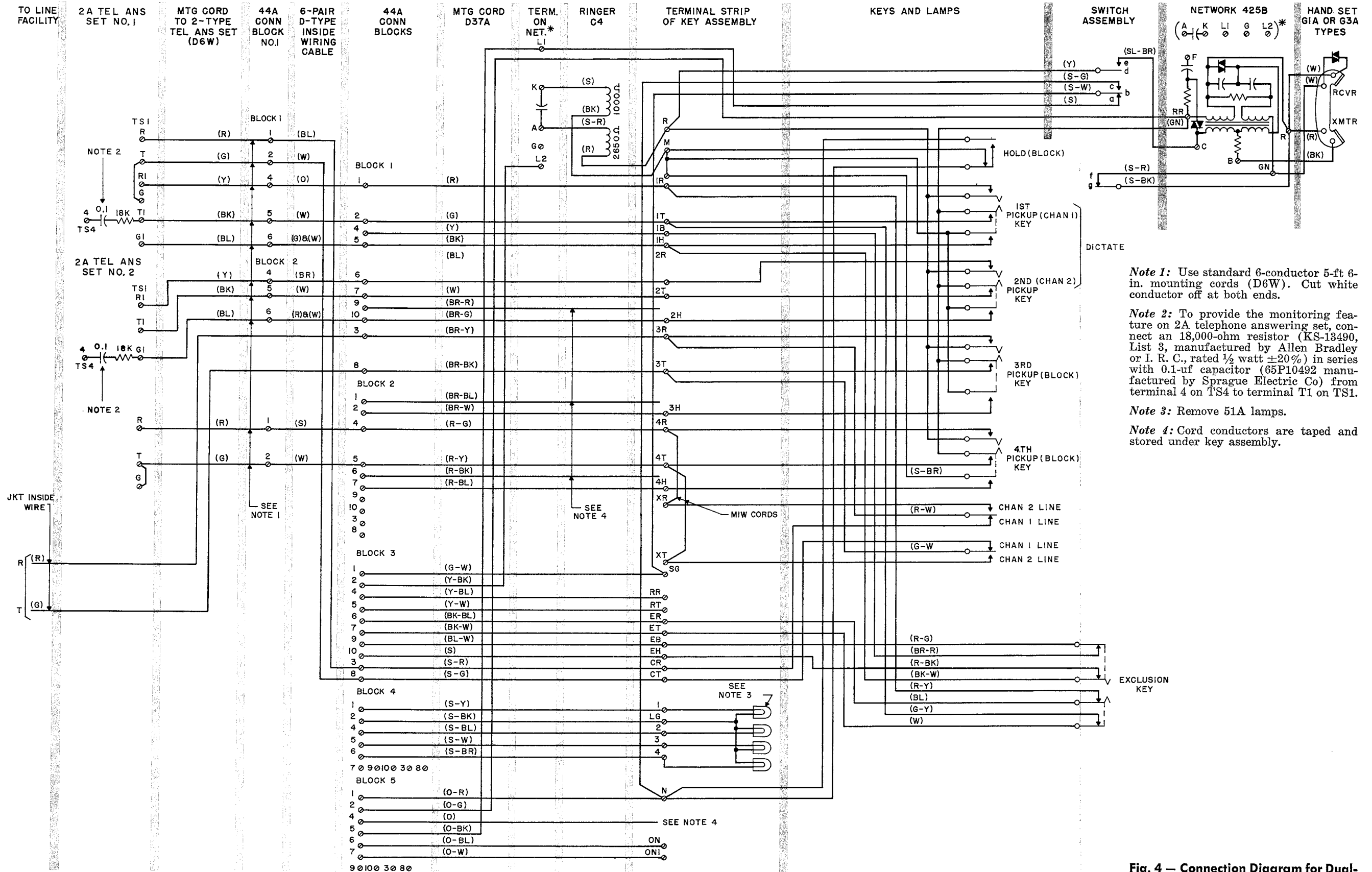
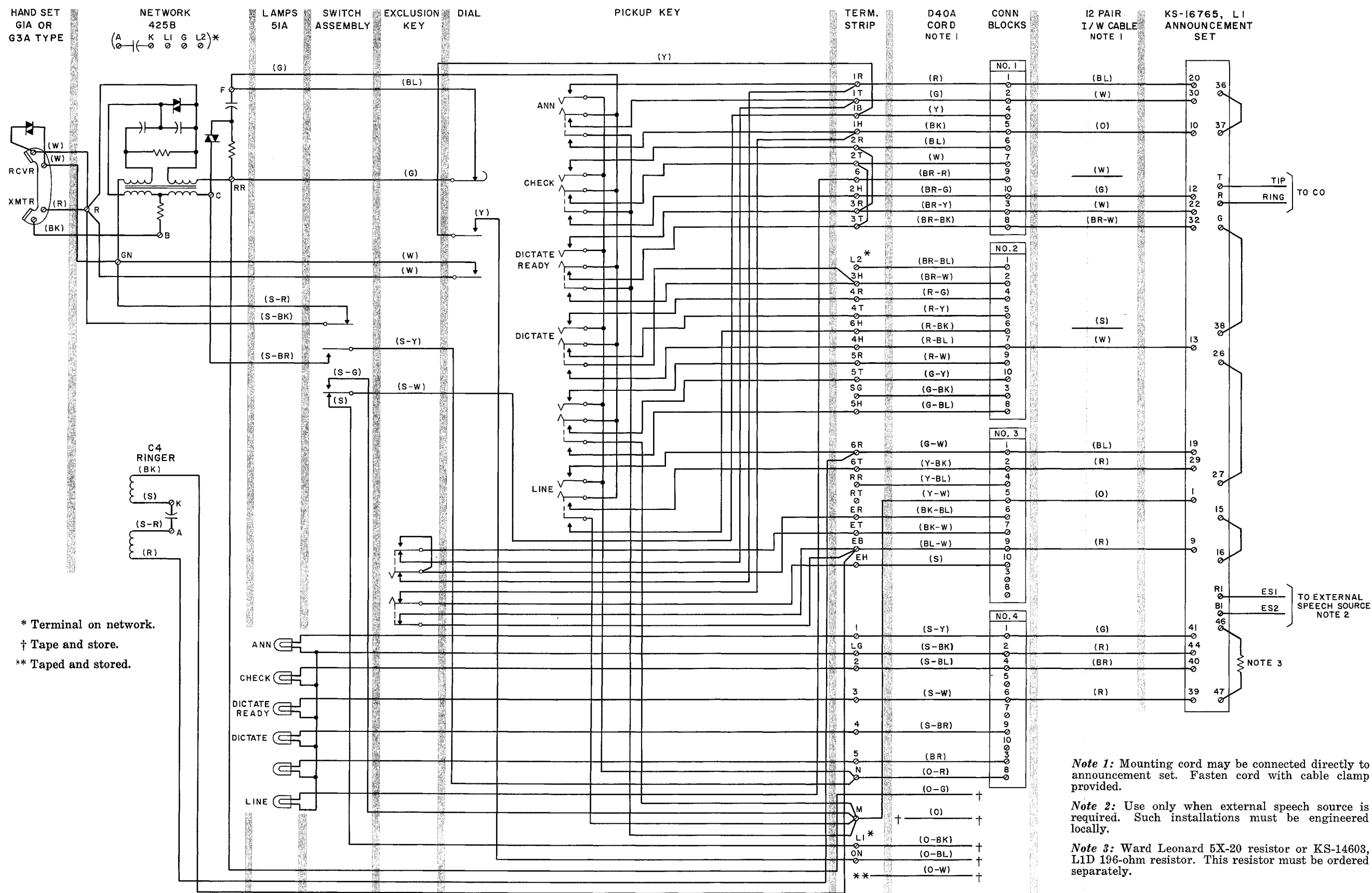


Fig. 4 — Connection Diagram for Dual-Channel Service with 2-Type Telephone Answering Set



Note 1: Mounting cord may be connected directly to announcement set. Fasten cord with cable clamp provided.

Note 2: Use only when external speech source is required. Such installations must be engineered locally.

Note 3: Ward Leonard 5X-20 resistor or KS-14603, L1D 196-ohm resistor. This resistor must be ordered separately.

Fig. 5 — Connection Diagram for Single-Channel Service (FS1) Using KS-16765, List 1 Announcement Set