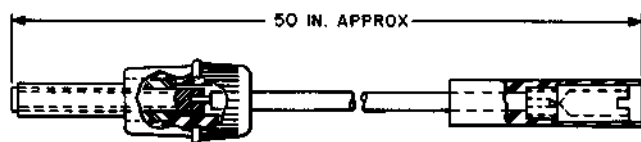


CODED TOOLS
742A THROUGH 766A

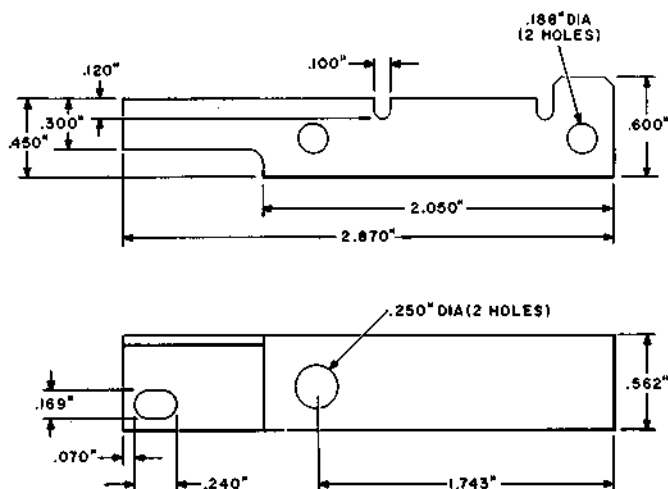
DESCRIPTION

742A



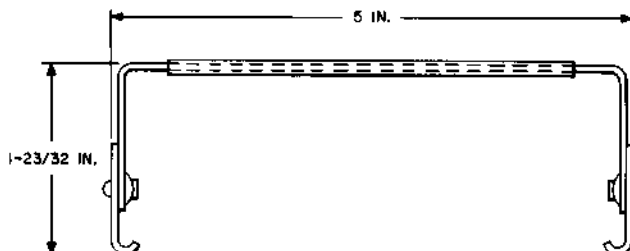
Test plug. For use in testing fuses in TD2 Radio Relay System.

→743A←



The 743A tool is used for locating a drilled hold necessary to modify coin collectors or coin telephones to accept a coin level detector.

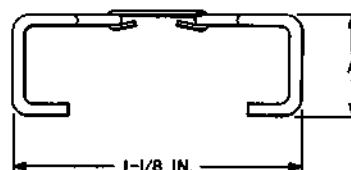
748A



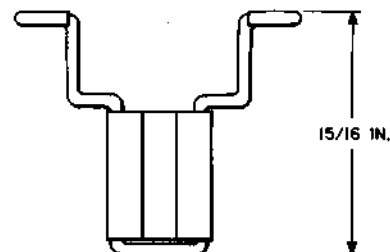
Extracting tool. The 748A tool was intended initially for use in extracting printed wiring board circuit packs of a data set in the No. 1 ESS.

749A

749B



CODE	DIM. A
749A	0.392 IN.
749B	0.986 IN.



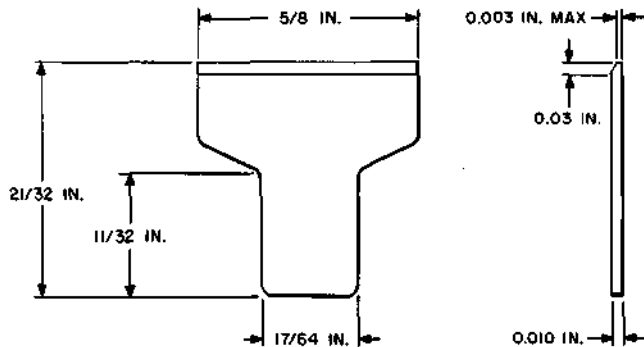
Balancing spring holders.

The 749A tool is for use in holding the balancing springs during removal of the card from BF-, BG-, and BL-type relays.

749A
749B (CONT)

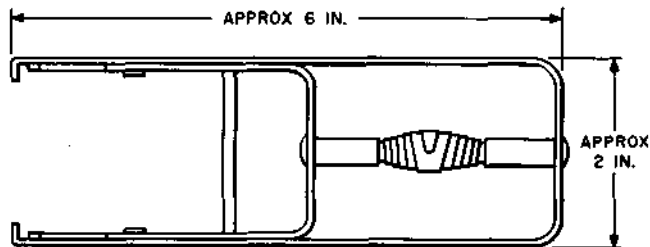
The 749B tool is for use in holding the balancing springs during removal of the card from BJ-type relays.

750A



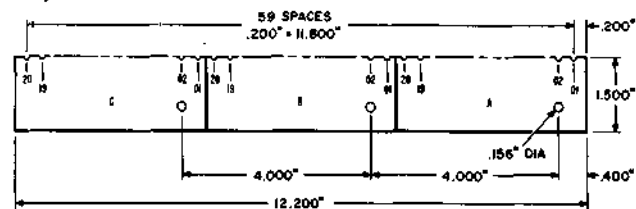
Insulator. For use in insulating the contacts during removal of the card from BF-, BG-, BJ-, and BL-type relays.

752A



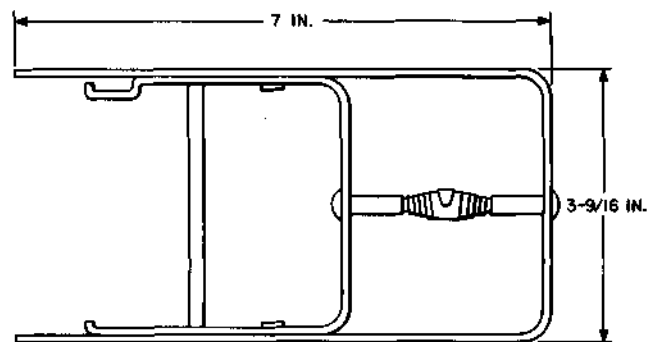
Circuit pack extractor. For use in removing D-type circuit packs from 910-type connectors.

753A



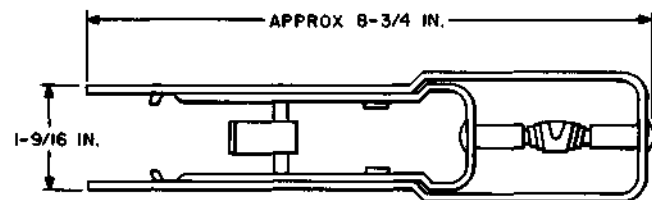
Locating and identifying tool. Used to locate and identify terminals for purposes of wiring and testing during manufacturing, installation, and maintenance. Initial use is on No. 101 ESS, J1H012A, and J1H013A switch units.

754A



Extracting tool. For use in removing KS-19162 L14 plugs used on interconnecting switchboard cables between two No. 5 crossbar completing marker frames.

755A



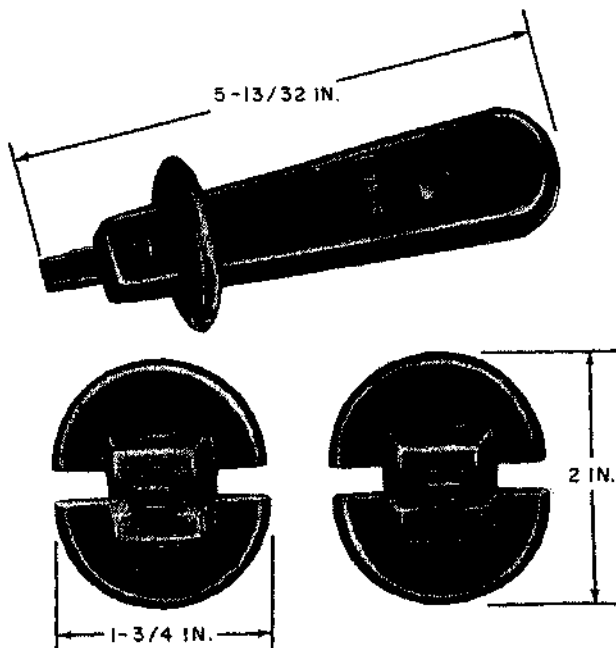
Extracting tool. For use in removing 89-type resistors from No. 1-type terminating sets.

→756B2←

MFR DISC

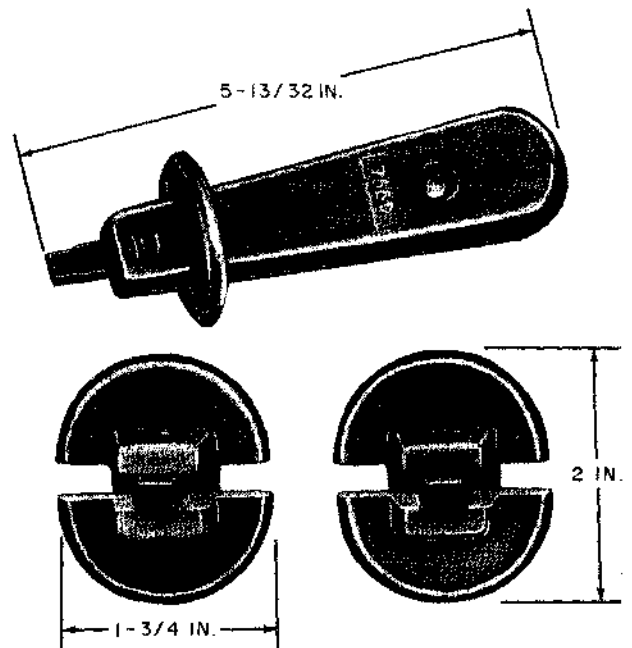
Replaced by the 756C tool.

→756C←



Connector tool. For use in seating 24 AWG IPVC wire in both single slip terminals and in quick-connect terminal welded assemblies on 78C-type connecting blocks on the COSMIC Frame System.

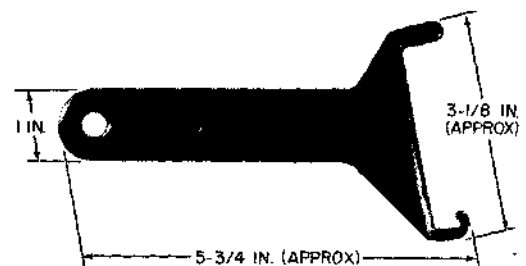
→756D←



Connector tool. For use in seating 22 AWG IPVC wire in both single slip terminals and in quick-connect terminal welded assemblies on 78A and 78B connecting blocks on the ESS MDF.

757A

Consists of two circuit packs, an A783 and an A784, schematics of which are in SD-1A102-01. For detailed information on how to use this tool, refer to Section 231-005-505. For use in program store circuit in No. 1 ESS.

758A

758A (CONT)

Extracting tool. For use in removing printed wiring boards from the tray in the No. 5 Crossbar System. Handle is epoxy coated.

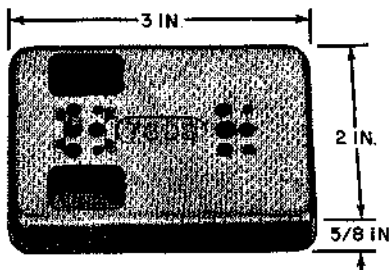
759A

A memory card acceptance checker which consists of a circuit pack and associated switch and lamp and is equipped with a 10-inch cable. Schematic for this tool is in SD-1A278-01. For detailed information on how to use this tool, refer to Section 231-005-501. For use in program store circuit in No. 1 ESS.

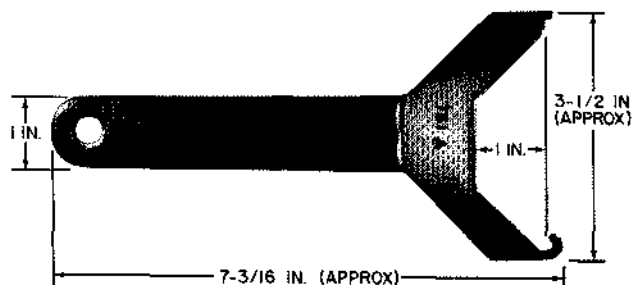
→760A←

MFR DISC

Replaced by the 760B tool.

760B

Disassembly fixture. A small, plastic panel which provides a plug-in position for both types of 3A and 4A protector units. One position is arranged for the older-type units, and the other position is arranged so the snap-on housing of the 3A5A and 4A5C protector units may be easily removed. Intended for use in repairing those protector units at central office locations. Replaces 760A tool.

761A

Extracting tool. For use in extracting or inserting plug-in units in the No. 4A and 4M Toll Switching Systems.

762A

Consists of two printed wiring boards connected by a cable approximately 25.500 inches long. For detailed information on how to use this tool, refer to Section 231-006-501. Used in the call store circuit on the No. 1 ESS.

764A**MFR DISC**

Replaced by KS-20929 L3 adjuster.

765A**MFR DISC**

Replaced by KS-20929 L3 and L4 adjusters.

766A**MFR DISC**

Replaced by KS-20929 L1 and L2 adjusters.