

SERVICE

COIN COLLECTORS, SUBSCRIBER SET REQUIRED

200 AND 210 SERIES

1. GENERAL

1.01 This section provides connection information for the 200- and 210-type coin collectors and associated subscriber sets.

1.02 This section is reissued to:

- Rearrange drawings to be consistent with other practices

- Delete information on the 685A subscriber set

1.03 Refer to Section 506-215-403 for connection information on the 685A subscriber set.

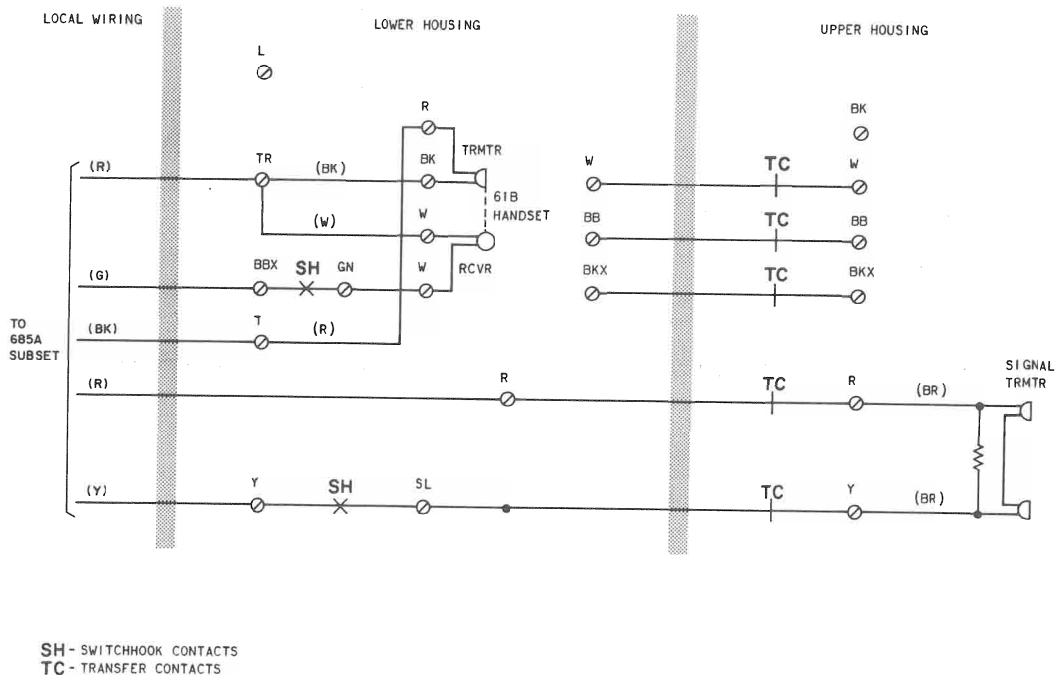
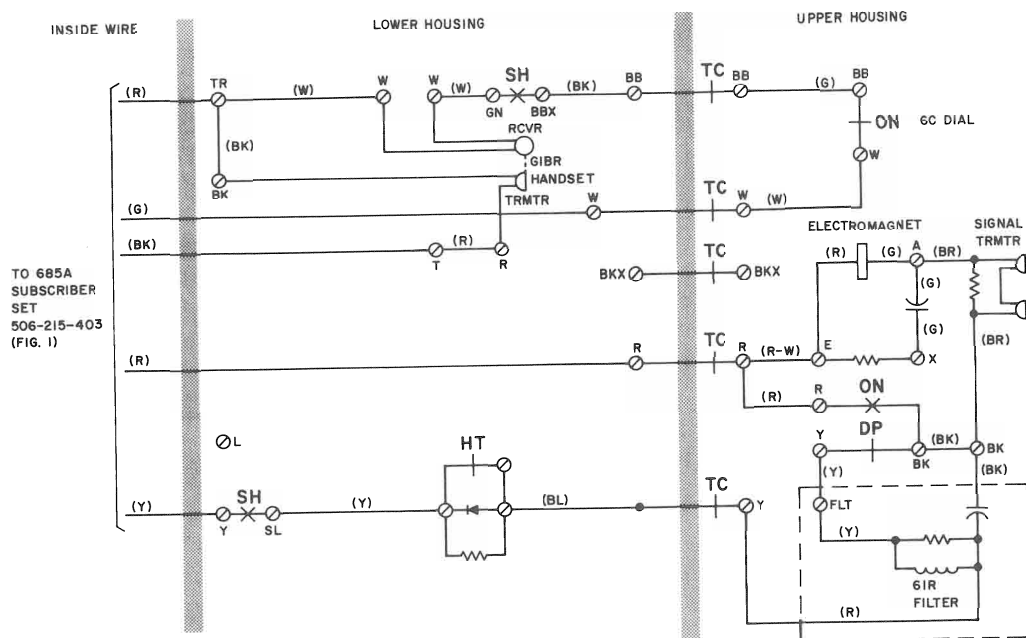


Fig. 1—200C and D Coin Collectors with 685A Subscriber Set—Postpay, Connections

SECTION 506-330-405



DP - DIAL PULSE CONTACTS
 HT - HOPPER TRIGGER CONTACTS
 SH - SWITCHHOOK CONTACTS
 ON - OFF NORMAL CONTACTS
 TC - TRANSFER CONTACTS

Fig. 2—210G, H, and 212G, H Coin Collectors with 685A Subscriber Set—Postpay, Connections