

MEASURING TAPES

DESCRIPTION AND USE

CONTENTS	PAGE
1. GENERAL	1
2. DESCRIPTION	1
A. Nonmetallic Measuring Tapes	1
B. B Steel Measuring Tape	3
3. USE	4
A. Nonmetallic Measuring Tapes	4
B. B Steel Measuring Tape	4
4. ORDER WORDING	4

2. DESCRIPTION

A. Nonmetallic Measuring Tapes

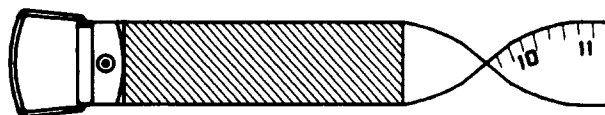
2.01 Tape construction has changed to include both woven and extruded fiberglass. The tapes are contained in metal or in high impact plastic cases or reels. The tape line **does not** contain metal strands.

2.02 These measuring tapes are supplied in either 50-, 100-, or 150-foot lengths. The inch markings and graduations are colored black and the foot markings are colored red. The tapes contain a 6-inch plastic reinforcing strip on the back side at the zero end (Fig. 1).

1. GENERAL

1.01 Nonmetallic measuring tapes and the B steel measuring tape and their use are described in this section.

1.02 This section is reissued to include information pertaining to design changes of woven and extruded fiberglass measuring tapes and tape containers. Since this is a general revision, arrows normally used to indicate changes have been omitted.



GREEN REINFORCING STRIP

Fig. 1—Woven Tapes

NOTICE

Not for use or disclosure outside the
Bell System except under written agreement

SECTION 081-220-100

2.03 The design of the cases for containing the tapes are illustrated in Fig. 2. The case is constructed of either high impact plastic or plastic covered metal. Orders for tapes will be filled with the type of case available at the time the order is

placed. The weight of a 50-foot tape and case will be 3/4-pound to 1-pound, depending on the type of case supplied. The 100-foot tape and case will weigh 1-1/3 pounds to 1-3/4 pounds. The 150-foot tape and case will weigh 2 pounds to 3-1/2 pounds.

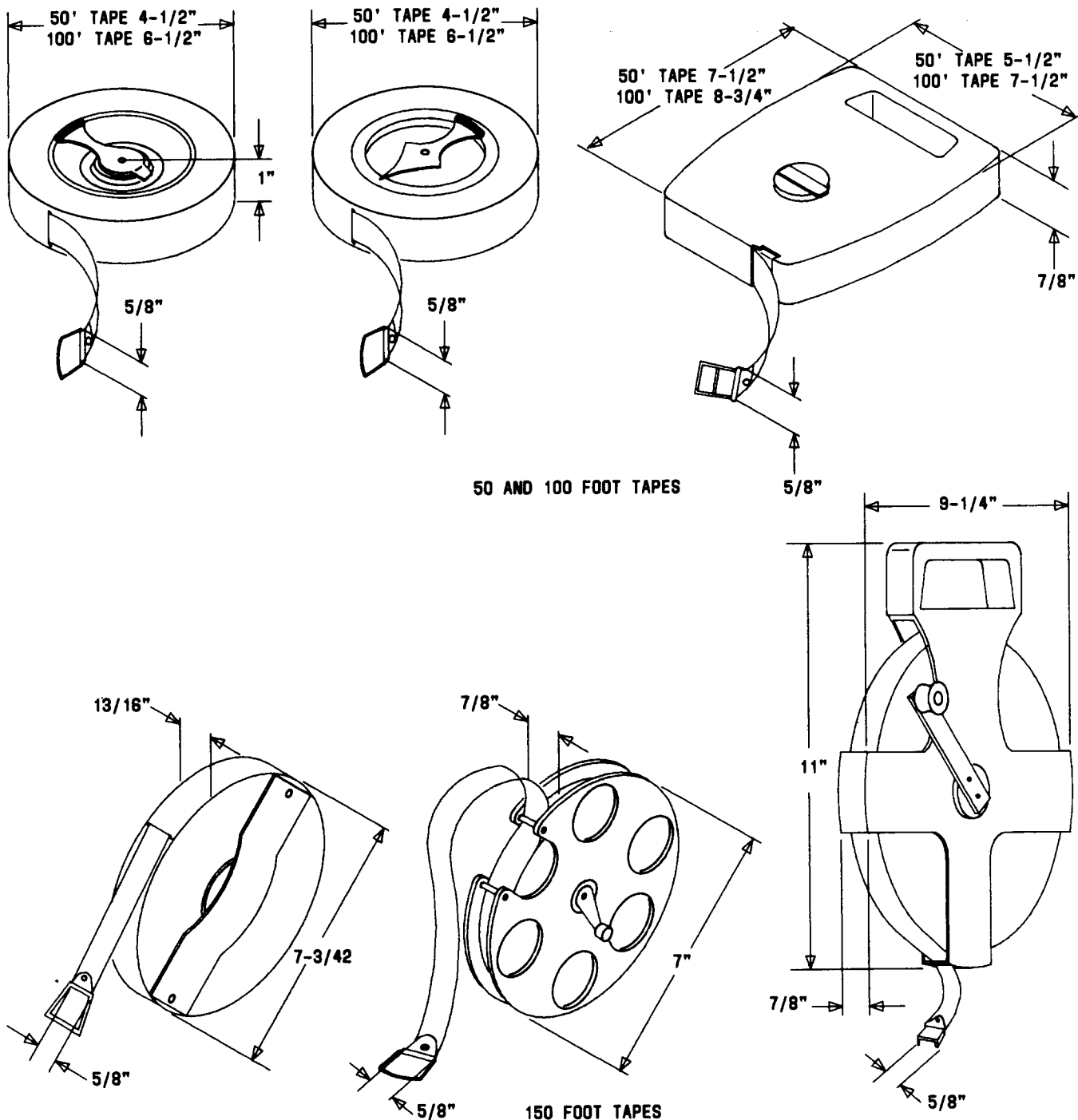


Fig. 2—50-, 100-, 150-Foot Tapes and Cases

B. B Steel Measuring Tape

2.04 The B steel measuring tape is a 200-foot long, plastic-coated, spring steel tape which is 5/16-inch wide. The numbers, graduations, and rims are black on a white background. The entire length of the tape is graduated in feet with the

first and last foot graduated in tenths and hundredths of a foot.

2.05 The B steel tape is wound on a drum-type, steel or aluminum reel equipped with a folding crank for winding. The case also includes a carrying handle. Two leather thongs are furnished for attachment to the free end of the tape (Fig. 3).

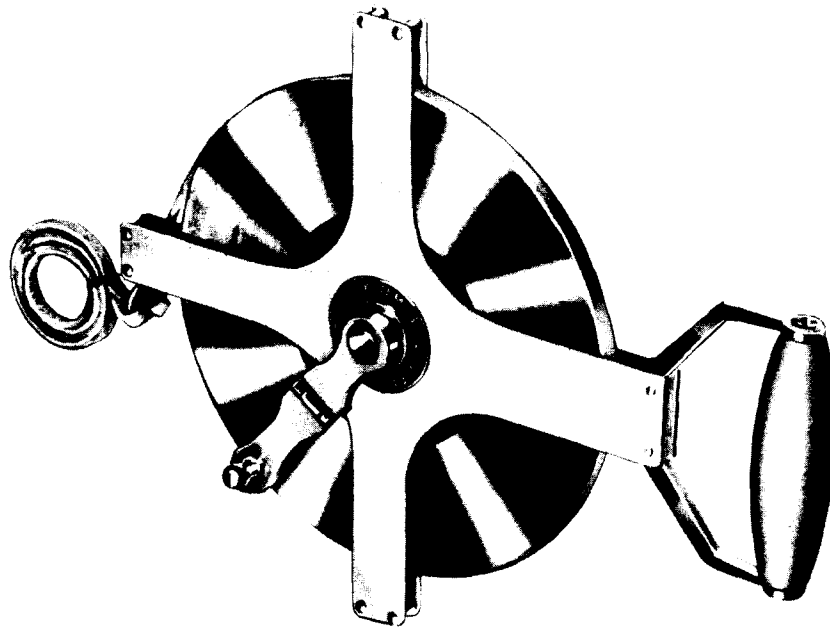


Fig. 3—B Steel Tape

SECTION 081-220-100

3. USE

A. Nonmetallic Measuring Tape

3.01 Dry, woven, or extruded fiberglass tapes with the green plastic reinforcing strip must be used where there is any possibility of contacting electric wires or other type of energized plant. Wet or damp tapes must be thoroughly dried prior to any use. Any tapes which do not contain the green reinforcing strip **must not** be used under any conditions.

3.02 Woven or extruded plastic tapes can be used to measure clearances and separations of telephone wire, strand, etc. They are **not to be used** to measure the height of electrical supply wires or other foreign wires. The provisions of the 621 Division of the Bell System Practices on clearance measurements, concerning the limitations on the use of woven or extruded plastic tapes, must be observed.

B. B Steel Measuring Tape

3.03 The B steel measuring tape **must not be used** where there is a possibility of electrically energizing the tape. Steel tapes are normally used for survey work and right-of-way measurements in connection with buried and underground construction.

4. ORDER WORDING

4.01 Order wording for measuring tapes is as follows:

(Quantity) Tape, Measuring, Nonmetallic—(50, 100, or 150 feet)

(Quantity) Tape, Steel, B (200 feet)

Replacement Part

(Quantity) Line for B Steel Tape, Refill Tape—200 feet.