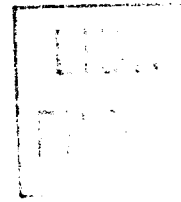


## B ALUMINUM CONNECTOR (AT-8984) DESCRIPTION AND USE



### 1. GENERAL

- 1.01** This section covers the description and use of the B aluminum connector (AT-8984).
- 1.02** Whenever this section is reissued, the reasons for reissue will be listed in this paragraph.
- 1.03** The B aluminum connector is used to connect aluminum wires to copper wires.

### 2. DESCRIPTION

- 2.01** The B aluminum connector (AT-8984) is a two-piece parallel groove connector. The connector will accommodate copper wire sizes 12 through 6 AWG and aluminum wire sizes 8 through 1/0 AWG. The wire is secured in the connector with a square neck bolt.

### 3. USE

- 3.01** The B aluminum connector is used to make mechanical connections of aluminum to copper ground wires. Wire of different sizes installed in the connector is shown in Fig. 1.

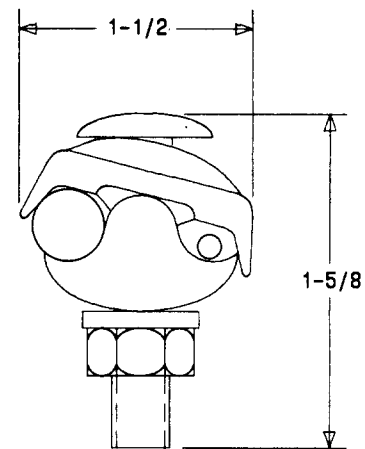


Fig. 1—B Aluminum Connector

### NOTICE

Not for use or disclosure outside the  
Bell System except under written agreement