

## CABLE CLAMPS (AT-6933)

### DESCRIPTION AND USE

FILE COPY

#### 1. GENERAL

1.01 This section describes cable clamps for use in supporting cables and wires.

1.02 Whenever this section is reissued, the reason(s) for reissue will be stated in this paragraph.

#### 2. DESCRIPTION AND USE

2.01 Cable clamps are used to support cables and wires on poles and walls.

2.02 Steel cable clamps (Fig. 1) are available in eleven sizes and are used for cable and wire diameters as shown in Table A. All sizes are available with a zinc plating for outside applications. Size No. 1En, 3, 4, 6, 8, and 13 are available with olive-gray enamel coating for indoor applications.

2.03 Size No. 1Zn clamp is a replacement for the AT-7090 B ground wire clamp and the AT-7555 B station wire clamp. The enamel-coated clamps in size No. 3, 4, 6, 8, 10, and 13 supersede AT-6539 and AT-8577 B inside wire cable clamps.

2.04 Size numbers, package quantities, and weights of steel cable clamps are shown in Table B. Orders for cable clamps (AT-6933) shall be worded as follows:

(Quantity) pkg(s) Clamps, Cable, Size (See Table B), Finish (zinc or enamel).

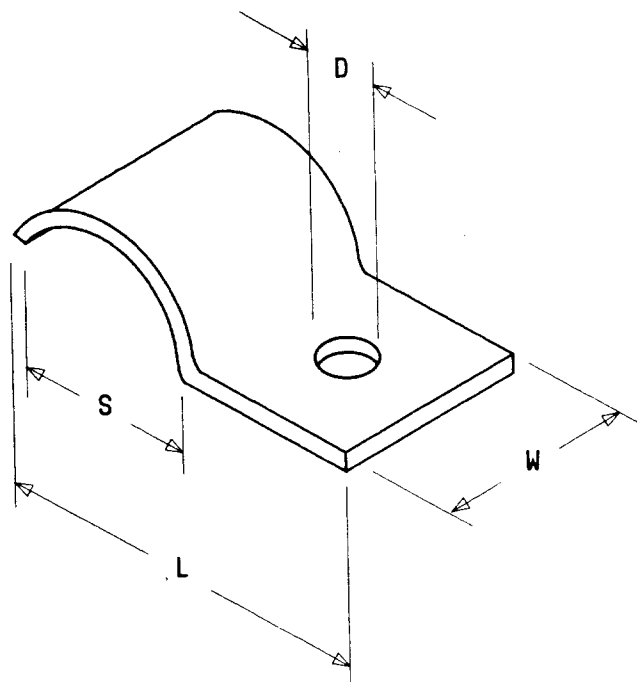


Fig. 1—Cable Clamp AT-6933

#### NOTICE

Not for use or disclosure outside the  
Bell System except under written agreement

**TABLE A**  
**SIZES AND DIMENSIONS**

SIZE NO.	FOR CABLE & WIRE DIAMETERS	DIMENSIONS OF CLAMP			
		D	S	W	L
	INCHES	INCH	INCHES	INCH	INCHES
1	0.100 to 0.150 incl	0.203	0.140	5/16	17/32
3	0.16 to 0.24 incl	0.203	0.281	5/16	5/8
4	0.25 to 0.33 incl	0.203	0.375	1/2	13/16
6	0.34 to 0.43 incl	0.265	0.516	1/2	1-1/16
8	0.44 to 0.60 incl	0.280	0.656	3/4	1-3/16
10	0.61 to 0.72 incl	0.280	0.796	3/4	1-1/2
13	0.73 to 0.93 incl	0.280	1.125	3/4	1-15/16
17	0.94 to 1.20 incl	0.280	1.500	3/4	2-9/16
21	1.21 to 1.70 incl	0.280	1.968	3/4	3-3/8
30	1.71 to 2.00 incl	0.280	2.625	3/4	4-1/16
35	2.01 to 2.75 incl	0.280	3.187	3/4	4-13/16

**TABLE B**  
**SIZE, QUANTITIES, AND WEIGHTS**

SIZE NO.	SMALL PKG QUANTITY	ORDERING MULTIPLE	APPROX. WT. PER 100
	PCS	PKGS	POUNDS
1Zn	10	500	0.15
1En	25	40 or 400	0.18
3	50	100	0.6
4	50	100	0.8
6	50	100	1.0
8	50	50	1.2
10	25	50	2.8
13	20	50	4.0
17	25	20	5.9
21	10	40	11.9
30	10	30	13.2
35	10	20	21.7