

## 1AA TELEPHONE ANSWERING SET STATION CONNECTIONS

## 1.00 GENERAL

**1.01** This section was formerly Station Installation and Maintenance Section C55.612, Issue 1. Except for editorial changes and renumbering for inclusion in the Station Operations Manual, no other revisions have been made.

**1.02** This section covers station connections for the 1AA telephone answering set as used with 302-, 304-, or 500-type telephone sets for the following classes of service:

- Individual lines (manual and dial)
- 2-party selective flat rate (manual and dial)
- 2-party selective message rate (manual and dial)
- 4-party selective (manual and dial)

**1.03** The connections for this service require some changes of the ringer connections in

TABLE A

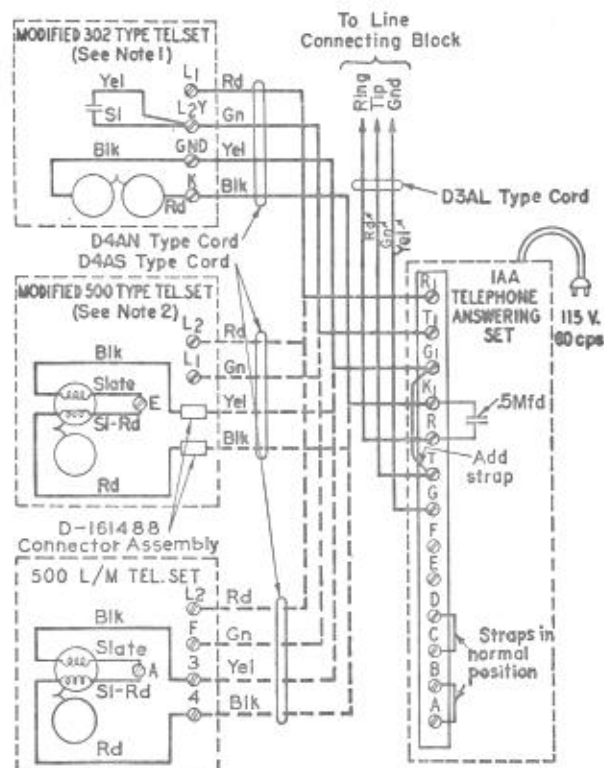
Class of Service	Fig. No.				
	Bridged	(—) Party on Tip	(+) Party on Tip	(—) Party on Ring	(+) Party on Ring
Bridged: Low Im- pedance	1				
High Im- pedance	2				
2- and 4-party Selective Flat Rate		5	6	3	4
2-party Selective Message Rate: Manual and Dial				3	4
Manual Only		5	6		
Dial Only		7	8		
2-party Flat Rate Automatic Message Accounting and Zone Registra- tion		7	8		
2-party Flat Rate Automatic Ticketing		9	10		

the associated telephone sets. Also, a substitution of telephone set mounting cords is required. The changes and cords are shown by the diagrams in this section.

**1.04** On 2- and 4-party connections, the polarity of the battery superimposed on ringing current should be checked.

## 2.00 CONNECTIONS

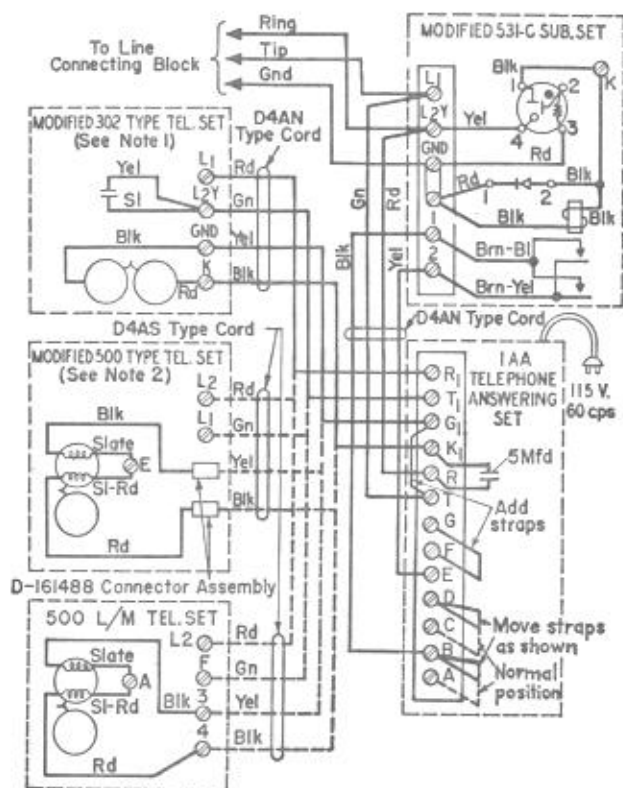
**2.01** Station connections for all classes of service are shown in Fig. 1 through 10. Table A is intended to be of assistance to more readily identify the figure associated with the service and party concerned.



**Note 1:** Transfer slate capacitor lead from K to L<sub>2</sub>Y as shown.

**Note 2:** Ringer connections are shown for 500A, B, J, and K sets. For 500C and D sets connect as shown, except connect slate and slate-red lead to terminal A.

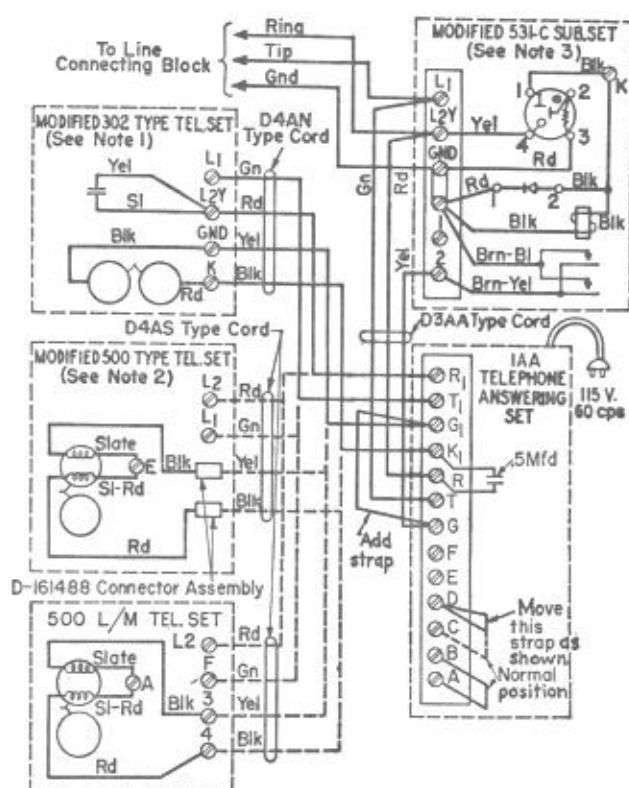
**Fig. 1 — 1AA Telephone Answering Set — Station Connections for Bridged Ringing Service (Low Impedance)**



**Note 1:** Transfer slate capacitor lead from K to L<sub>2</sub>Y as shown.

**Note 2:** Ringer connections are shown for 500A, B, J, and K sets. For 500C and D sets connect as shown, except connect slate and slate-red lead to terminal A.

**Fig. 2 — 1AA Telephone Answering Set — Station Connections for Bridged Ringing Service (High Impedance)**

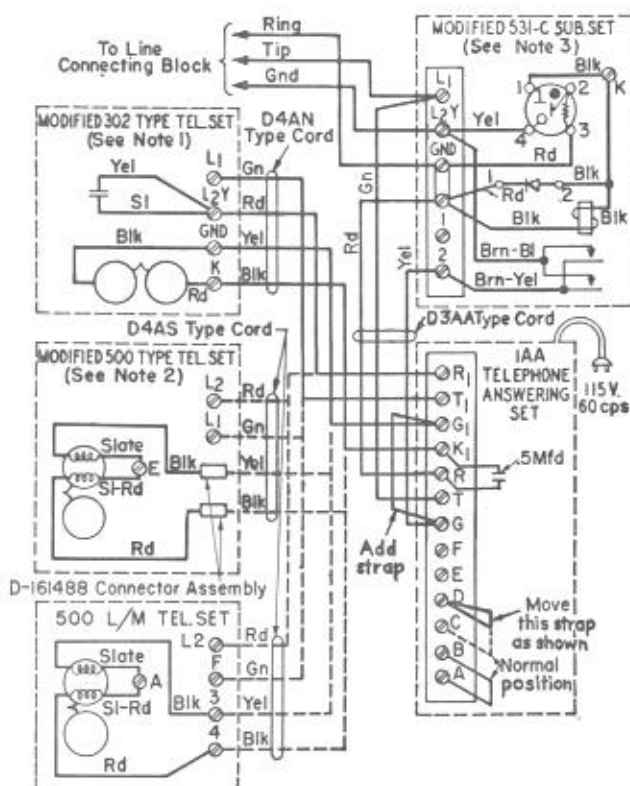


**Note 1:** Transfer slate capacitor lead from K to L<sub>2</sub>Y as shown.

**Note 2:** Ringer connections are shown for 500A, B, J, and K sets. For 500C and D sets connect as shown, except connect slate and slate-red lead to terminal A.

**Note 3:** Transfer brown-blue lead from 1 to GND as shown.

**Fig. 3 — 1AA Telephone Answering Set — Station Connections for 2- and 4-party Selective Flat Rate and 2-party Message Rate Service — (—) Party on Ring**

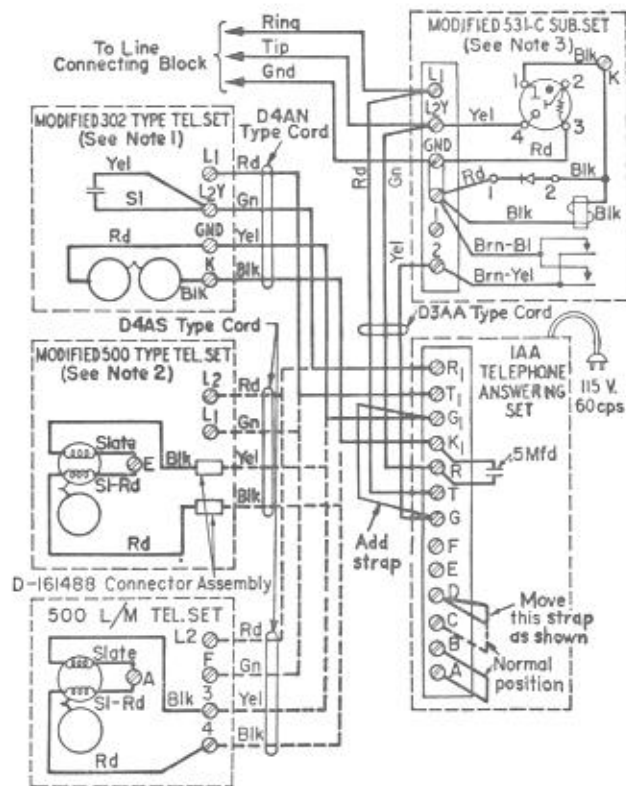


**Note 1:** Transfer slate capacitor lead from K to L<sub>2</sub>Y as shown.

**Note 2:** Ringer connections are shown for 500A, B, J, and K sets. For 500C and D sets connect as shown, except connect slate and slate-red lead to terminal A.

**Note 3:** Transfer brown-blue lead from 1 to L<sub>2</sub>Y as shown.

**Fig. 4 - IAA Telephone Answering Set - Station Connections for 2- and 4-party Selective Flat Rate and 2-party Message Rate Service - (+) Party on Ring**

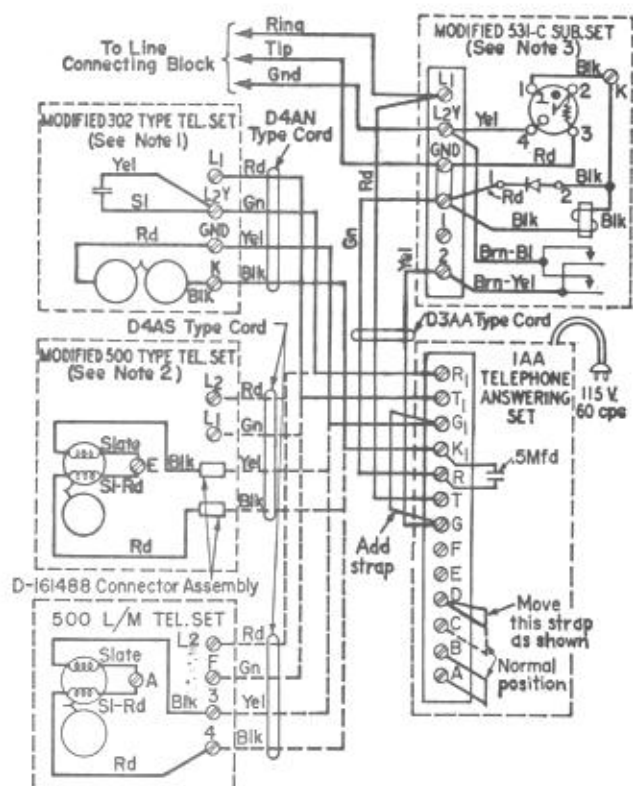


**Note 1:** Transfer slate capacitor lead from K to L<sub>2</sub>Y as shown.

**Note 2:** Ringer connections are shown for 500A, B, J, and K sets. For 500C and D sets connect as shown, except connect slate and slate-red lead to terminal A.

**Note 3:** Transfer brown-blue lead from 1 to GND as shown.

**Fig. 5 - IAA Telephone Answering Set - Station Connections for 2- and 4-party Selective Flat Rate and 2-party Message Rate Service - (-) Party on Tip**

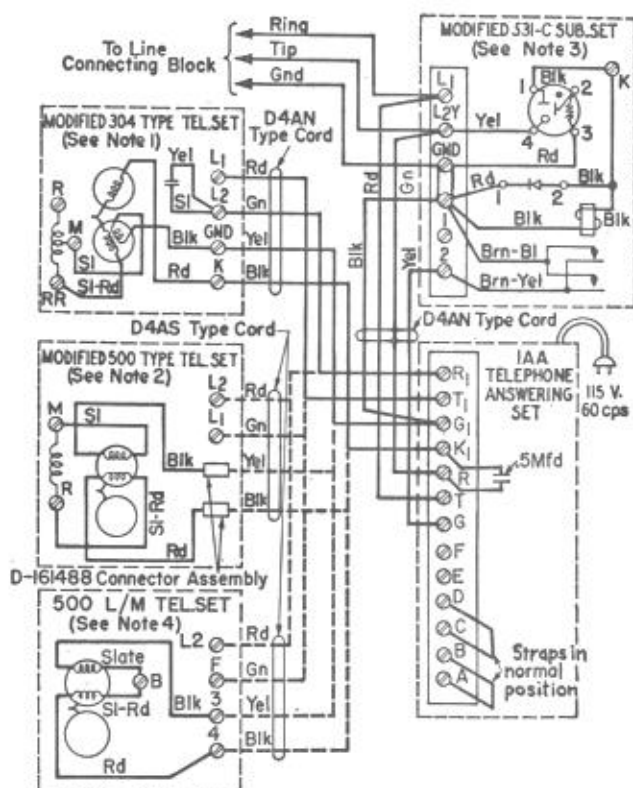


**Note 1:** Transfer slate capacitor lead from K to L<sub>2</sub>Y as shown.

**Note 2:** Ringer connections are shown for 500A, B, J, and K sets. For 500C and D sets connect as shown, except connect slate and slate-red lead to terminal A.

**Note 3:** Transfer brown-blue lead from 1 to L<sub>2</sub>Y as shown.

**Fig. 6 – IAA Telephone Answering Set – Station Connections for 2- and 4-party Selective Flat Rate and 2-party Manual Message Rate Service – (+) Party on Tip**



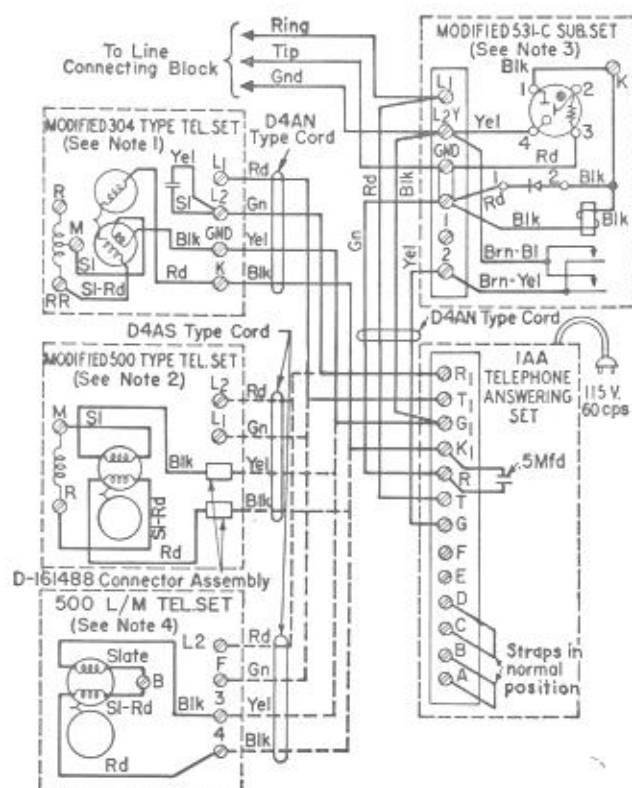
**Note 1:** Transfer slate capacitor lead from K to L<sub>2</sub> as shown.

**Note 2:** Ringer connections are shown for 500A, B, J, and K sets. For 500C and D sets connections should be in accordance with the C Section covering telephone sets, connections, except red and black leads are connected as shown.

**Note 3:** Transfer brown-blue lead from 1 to GND as shown.

**Note 4:** Transfer slate and slate-red ringer leads from A to B as shown.

**Fig. 7 – IAA Telephone Answering Set – Station Connections for following (—) Parties on Tip:  
Message Rate (Dial Only)  
Flat Rate Automatic Message Accounting and  
Zone Registration**



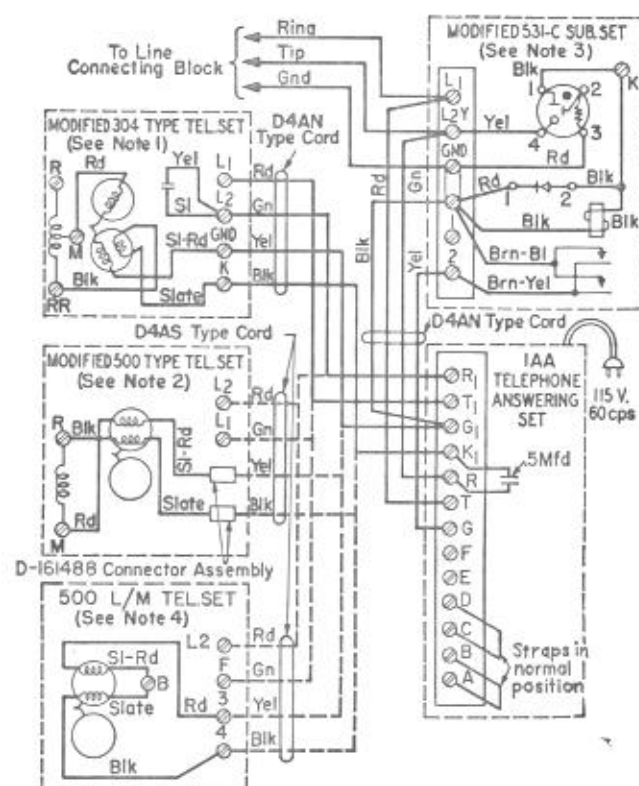
**Note 1:** Transfer slate capacitor lead from K to L<sub>2</sub> as shown.

**Note 2:** Ringer connections are shown for 500A, B, J, and K sets. For 500C and D sets connections should be in accordance with the C Section covering telephone sets, connections; except red and black leads are connected as shown.

**Note 3:** Transfer brown-blue lead from 1 to L<sub>2</sub>Y as shown.

**Note 4:** Transfer slate and slate-red ringer leads from A to B as shown.

**Fig. 8 — IAA Telephone Answering Set — Station Connections for following (+) Parties on Tip:**  
 Message Rate (Dial Only)  
 Flat Rate Automatic Message Accounting and  
 Zone Registration



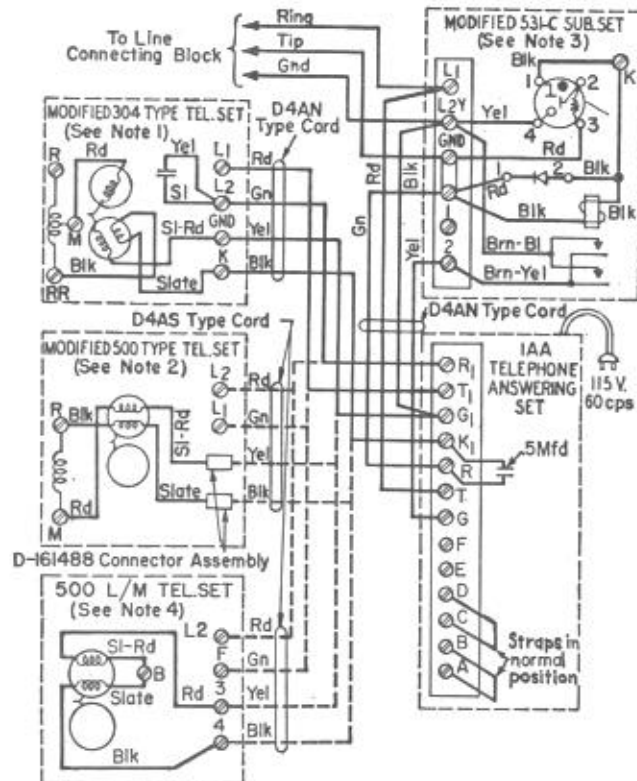
**Note 1:** Transfer slate capacitor lead from K to L<sub>2</sub> as shown.

**Note 2:** Ringer connections are shown for 500A, B, J, and K sets. For 500C and D sets connections should be in accordance with the C Section covering telephone sets, connections; except red and black leads are connected as shown.

**Note 3:** Transfer brown-blue lead from 1 to GND as shown.

**Note 4:** Interchange red and black ringer leads at terminals 3 and 4, and transfer slate and slate-red ringer leads from A to B as shown.

**Fig. 9 — IAA Telephone Answering Set — Station Connections for Flat Rate Automatic Ticketing — (-) Party on Tip**



**Note 1:** Transfer slate capacitor lead from K to L<sub>2</sub> as shown.

**Note 2:** Ringer connections are shown for 500A, B, J, and K sets. For 500 C and D sets connections should be in accordance with the C Section covering telephone sets, connections; except red and black leads are connected as shown.

**Note 3:** Transfer brown-blue lead from 1 to L<sub>2</sub>Y as shown.

**Note 4:** Interchange red and black ringer leads at terminals 3 and 4, and transfer slate and slate-red ringer leads from A to B as shown.

**Fig. 10—1AA Telephone Answering Set—Station Connections for Flat Rate Automatic Ticketing—  
(+) Party on Tip**