

SUBSCRIBER SETS CONVERSION TO ANTI-SIDETONE

1. GENERAL

1.01 This section covers the conversion of subscriber sets from sidetone to anti-sidetone type at the station (without removing the set from the wall) through the installation of D-158595 Apparatus Units and also the maintenance of these apparatus units.

1.02 This apparatus unit is for converting metal subscriber sets of the bell box type and cannot be used in wall type sets. It may be used only in metal bell boxes intended for individual lines and for such other services as employ the same bell boxes as individual lines.

2. DESCRIPTION

2.01 The D-158595 Apparatus Unit is an assembly of an anti-sidetone induction coil, two condensers and a connecting block on a mounting plate and may be (a) the assembly shown in Fig. 1 or (b) the assembly shown in Fig. 2 depending upon local supply conditions. The hole marked (c) is for mounting a special bracket for a vacuum tube and may be disregarded except when the bracket is furnished locally.

3. INSTALLATION

3.01 Remove all apparatus in existing sidetone subscriber set except the ringer and its associated parts. In sets

having a two-piece base this can be done simply by disconnecting the ringer and removing the two screws that fasten the plate on which the induction coil, condensers, etc., are mounted. Attach the D-158595 Apparatus Unit with the two P-142036 screws furnished with it. For sets having a two-piece base, place mounting screws in holes marked (a) in Fig. 1 or 2. In all other sets use the two diagonally opposite holes marked (b) which line up with the threaded holes in the base that were previously used to mount the induction coil.

3.02 Attach ringer leads, wiring and cords in accordance with the sections covering the connections for the particular class of service being furnished.

4. MAINTENANCE

4.01 Component parts on the D-158595 unit, if found defective, should be replaced by a new or repaired part or the complete apparatus unit may be replaced. The induction coil must be of the same code as the one removed but equivalent condensers are satisfactory so long as they can be properly mounted on the unit.

4.02 If the 481A tool is to be used to remagnetize the ringer in a set equipped with an apparatus unit having a condenser under the induction coil, it will be necessary to remove the unit mounting screws and move the unit so that the pole-pieces of the tool can engage the ringer magnet.

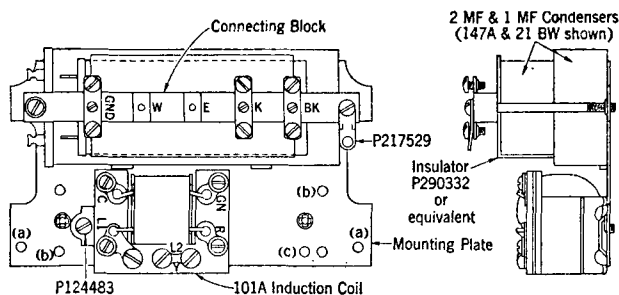


Fig. 1—Apparatus Unit Assembly (a)

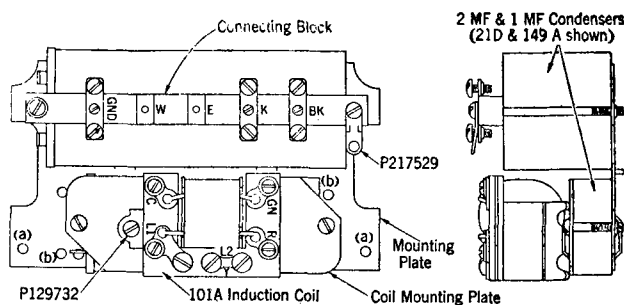


Fig. 2—Apparatus Unit Assembly (b)