

BONE CONDUCTION RECEIVER

1. GENERAL

1.01 This section covers the bone conduction receiver which is used when the subscriber with impaired hearing requires the transmission of sound through the bone.

2. DESCRIPTION

2.01 The bone conduction receiver consists of a brown receiver, a black headband equipped with a clear plastic pad, and a black 4-foot cord (see Fig. 1).

3. INSTALLATION

3.01 The installation of the bone conduction receiver requires additional mounting cord conductors and installation of a 6017B key.

3.02 Install the 6017B key as covered in Section C36.306, Station Control Keys, Description and Installation. Where D-161488 connectors are used, insulate and arrange in the set to avoid interference with any moving parts.

4. CONNECTIONS

4.01 Figs. 2 through 5 show typical connections for bone conduction receivers and include all common battery, LBT-CBS, and magneto antisidetone stations.

5. MAINTENANCE

5.01 Replace the bone conduction receiver if it becomes defective.

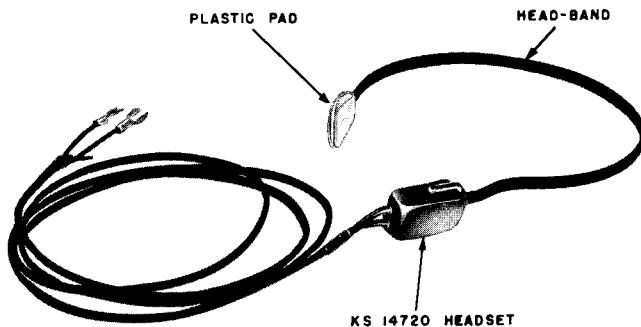


Fig. 1

6. SUPPLIES

INDEX

Cords
(Mounting)

CORD, D9D.
Mounting cord used with 322- and 334-type telephone sets.

CORD, D6T.
Mounting cord used with 532-, 533-type telephone sets and 6030A Key.

Key

KEY, 6017B.
A 2-way position key mounted in a metal box.

Receiver

SET, HEAD KS-14720, L2.
A bone conduction receiver equipped with a 4-foot cord, headband, and clear plastic pad.

ORDERING INFORMATION AND DESCRIPTION

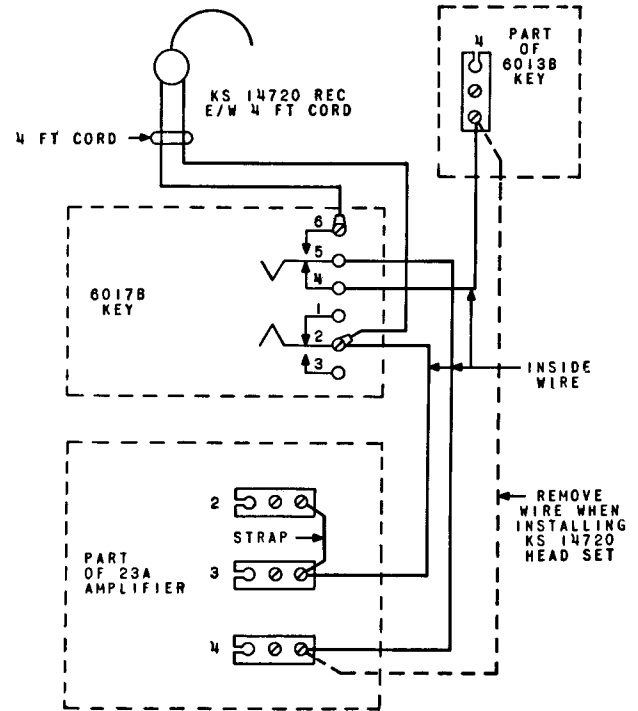


Fig. 2—Bone Conduction for Key Equipment 10A

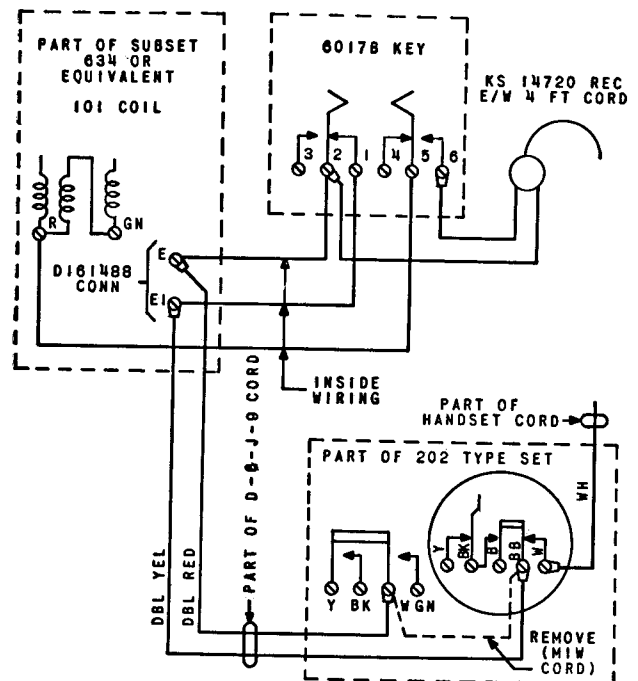


Fig. 3—Bone Conduction for 6030A Key With 202-type Telephone Set

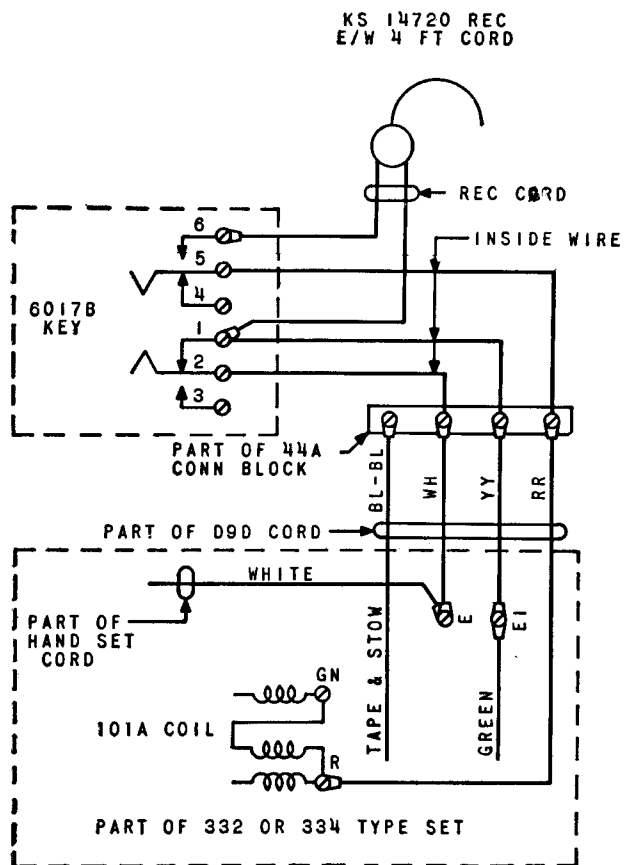


Fig. 4—Bone Conduction for 332- and 334-type Telephone Sets

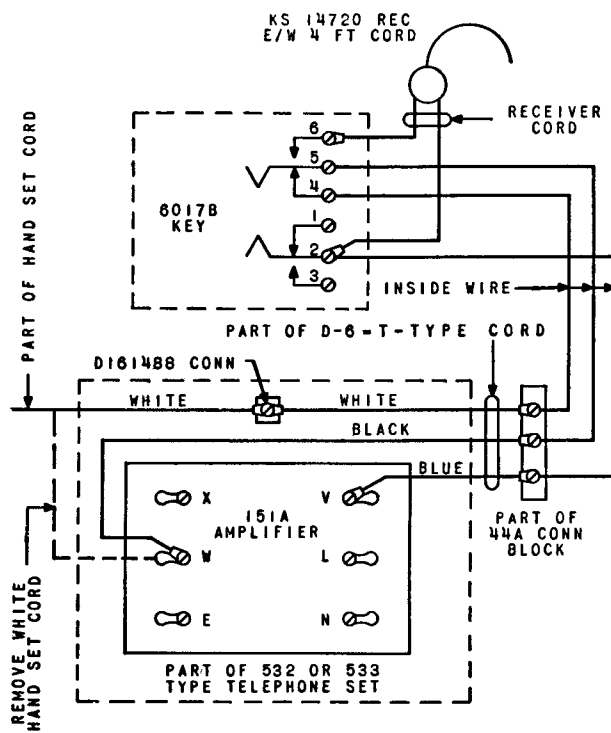


Fig. 5—Bone Conduction for 532- and 533-type Telephone Sets