

SUBSCRIBER SETS — 634A,BA,C, 684A,BA,C

COMMON BATTERY — INDUCTION COIL TYPE CONNECTIONS

1.00 INTRODUCTION

This section covers the combinations of apparatus, circuit diagrams, and connections for subscriber sets of types 634A,BA, and C and 684A,BA, and C, when associated with hand telephone sets and coin collectors for common battery service.

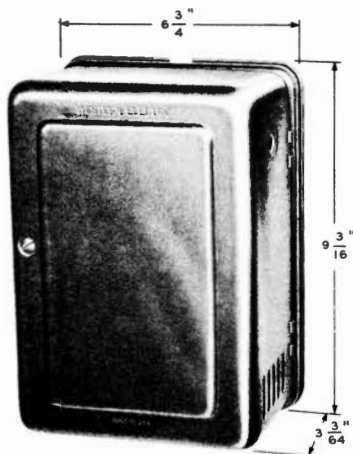


FIG. 1—634 TYPE

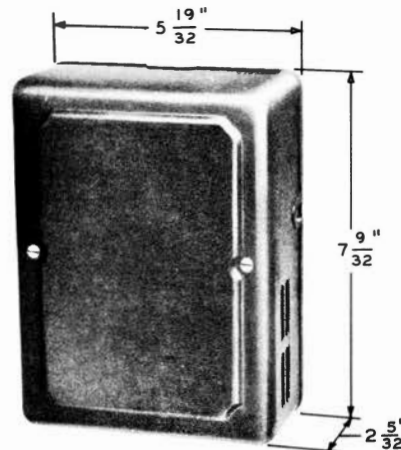


FIG. 2—684 TYPE

2.00 GENERAL

These sets may be connected for use in both dial and manual classes of service except when message rate or tip party identification is required for party-on-tip stations of 2-party service.

TABLE A—COMBINATION OF APPARATUS

Sub. Set Code	Components			Impedance of Ringing Bridge
	Ringer	Capacitor	Induction Coil	
634A	42A, 68A, 72A, or B3B	194A or 194AB	146C or 101A	Low
634BA	68J, 68JA, or B1AL	194B or 194BB		High
634C	—	147A, 147AB, or 447A		—
684A	78A or 78AA	194A or 194AB		Low
684BA	78J, 78JA, or B1AL	194B, 194BB, or 195A		High
684C	—	147A, 147AB, or 447A		—

3.00 CONNECTIONS WITH HAND TELEPHONE SETS

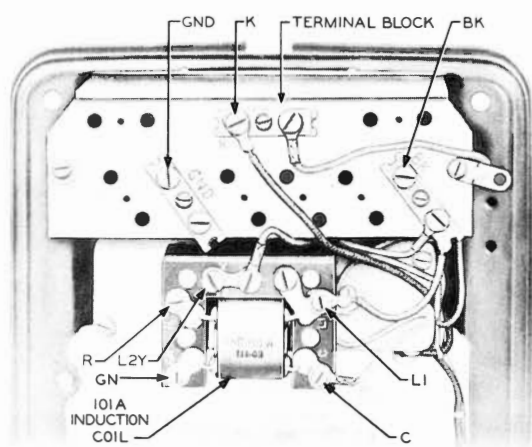


FIG. 3—634 TYPE

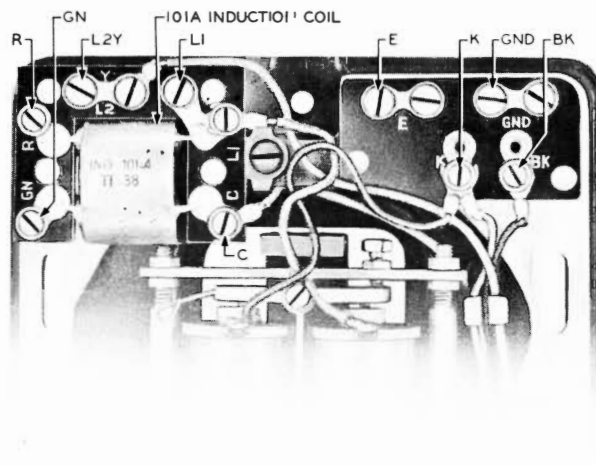


FIG. 4—684 TYPE

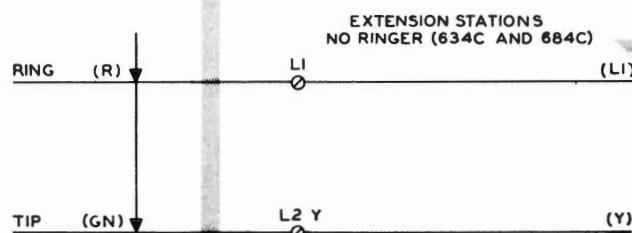
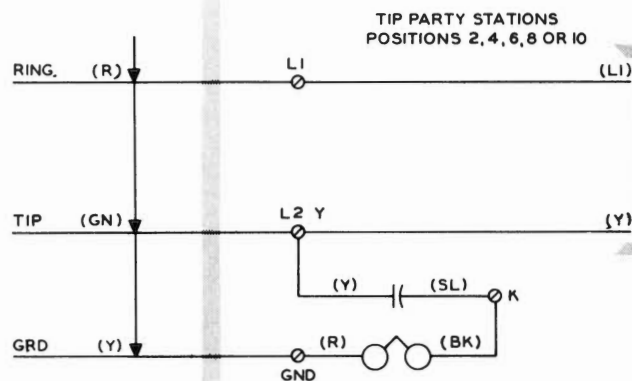
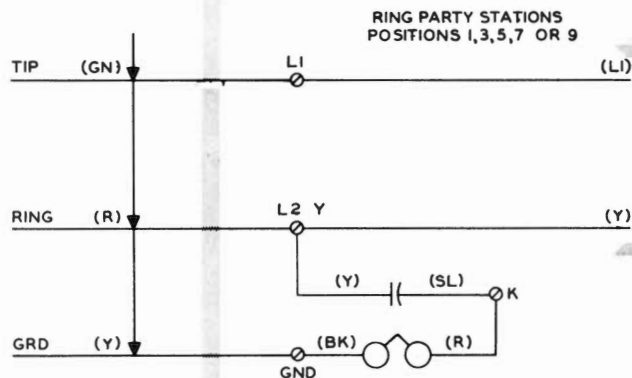
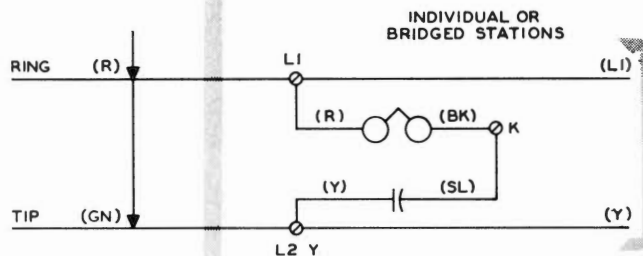
TABLE B—CONNECTIONS

Wire or Lead		Individual or Bridged	Ring Party Position 1, 3, 5, 7, or 9	Tip Party Position 2, 4, 6, 8, or 10
Inside Wire from Line or Protector	R	L1	L2Y	L1
	GN	L2Y	L1	L2Y
	Y	—	GND	GND
Ringer Lead	R	L1	K	GND
	BK	K	GND	K
Ringing Capacitor Lead	Y	L2Y	L2Y	L2Y
	SL	K	K	K
Talking Capacitor Lead	R	C	C	C
	BK	BK	BK	BK
Mounting Cord or Local Wire to Hand Tel. Set	GN	GN	GN	GN
	R	R	R	R
	BK	BK	BK	BK
	Y	L2Y	L2Y	L2Y
Permanently Silenced Ringer				
Ringer Lead	R	GND	K	GND
	BK	K	GND	K
Ringing Capacitor Lead	Y	GND	GND	GND
	SL	K	K	K

4.00 CIRCUIT DIAGRAM—NONCOIN

INSIDE WIRE
FROM PROTECTOR
OR LINE

RINGING CIRCUIT



TALKING CIRCUIT

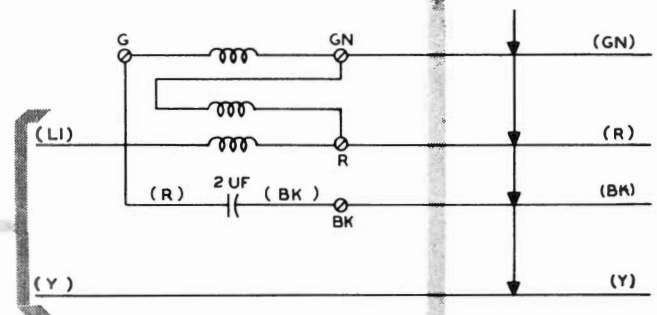
MTG CORD OR
LOCAL WIRING

TABLE C—ASSOCIATED APPARATUS

Class of Service	Hand Telephone Sets	
	Hang-up Type	Desk Type
Individual Lines		
2-Party (see note)	201A, B, C, D	202A, B, C, D
4-Party Semiselective	211A, B, C, D,	203A, B, C, D,
Multiparty Divided	J, L	E, F
Code	212A, B, C, L	215A, B, C, D
Regular PBX Stations	213A, B, C, E	
750A and 755A Keyless Stations		

Note: This type subscriber set cannot be used for tip party stations where message rate or tip party identification is required.

5.00 634A, BA, 684A, BA CONNECTIONS FOR COMBINATION WITH COIN COLLECTORS

TABLE D—CONNECTIONS

Type of Service	Subscriber Set Connections (Wire or Lead)												
Prepay Manual and Dial Type Coin Collectors	Ringer Lead		Ringing Capacitor Lead		Talking Capacitor Lead		Local Wire From Coin Collector						
	R	BK	Y	SL	R	BK	GN	R	BK	Y	R	GN	Y
Rec-Trans Types 155C, D, G, H 166C, D, G, H Handset Types 174C, D, G, H 176C, D, G, H	L1	K	L2Y	K	C	BK	GN	R	BK	L2Y	L1	—	—

Type of Service	Subscriber Set Connections (Wire or Lead)															
Postpay Manual and Dial (CDO) Type Coin Collectors	Inside Wire from Protector or Line			Ringer Lead		Ringing Capacitor Lead		Talking Capacitor Lead		Local Wiring to Coin Collector						
	R	GN	Y	R	BK	Y	SL	R	BK	GN	R	BK	Y	R	GN	Y
Rec-Trans Types Manual Dial 150K, L 158G, H 162A,B,C,D 168G, H Handset Types Manual Dial 152C, D 177G, H 164C, D 178G, H	L1	L2Y	—	L1	K	L2Y	K	C	BK	GN	R	BK	L2Y	—	—	—
Note: Use only 634BA or 684BA (high-impedance ringer) in community dial office.																

Type of Service	Subscriber Set Connections (Wire or Lead)												
Prepay Dial Type Coin Collectors with Dial Shorting Relay	Ringer Lead		Ringing Capacitor Lead		Talking Capacitor Lead		Local Wire From Coin Collector						
	R	BK	Y	SL	R	BK	GN	R	BK	Y	R	GN	Y
Rec-Trans Types D-178457 D-178875 Handset Types D-178940 D-178942	E*	K	L2Y	K	C	BK	GN	R	BK	L2Y	E*	L1	—

*Use D-161488 connector in 634-type subscriber sets.

5.01 The line wires are shown terminated in the subscriber set in the tables and circuit diagrams. When desired by the telephone company, they may be terminated in the coin collector set.

5.02 All connections are shown for individual line, bridged ringing installations. If other ringing arrangements are required, refer to 3.00 or 4.00 of this section for appropriate ringer connections.