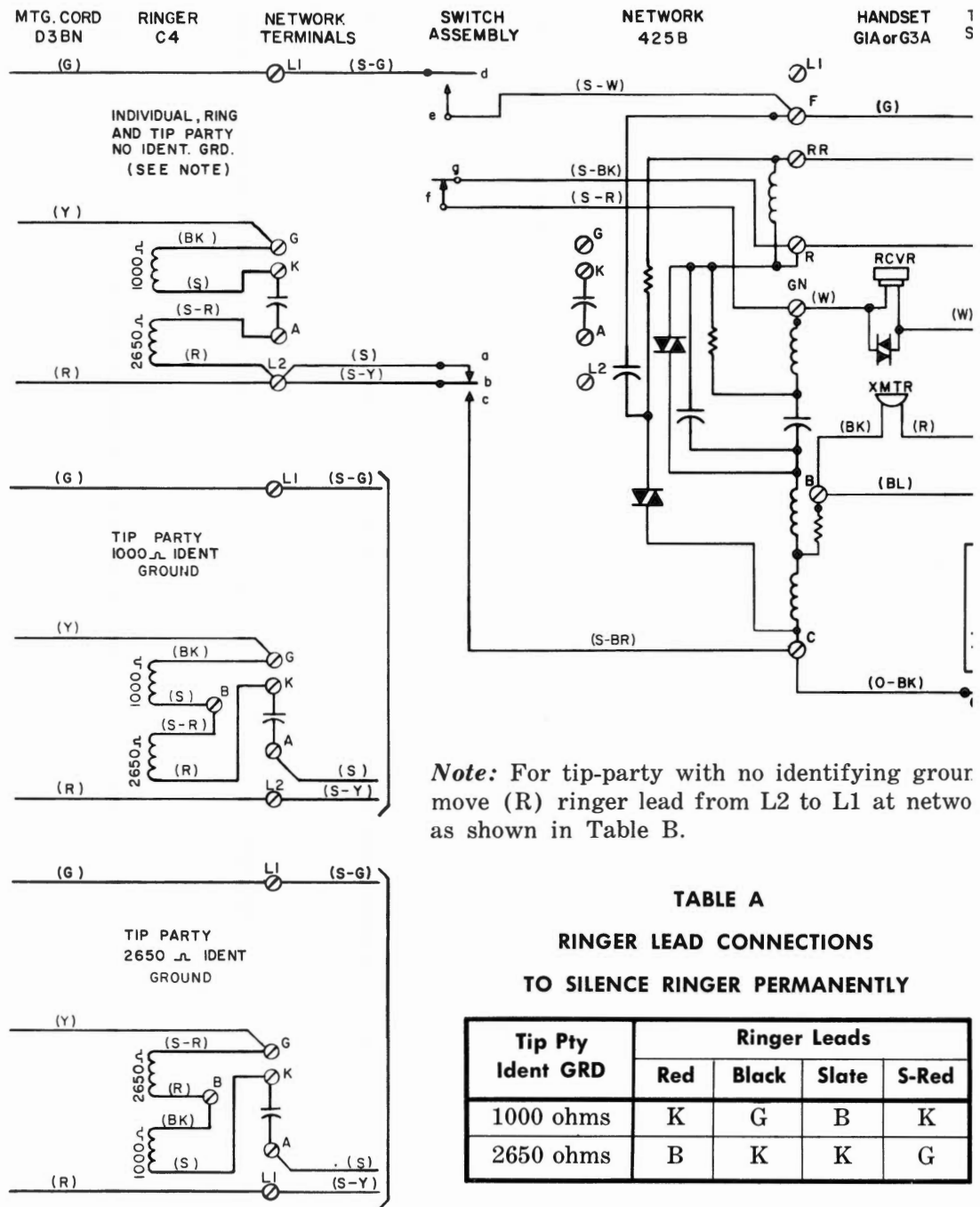


TELEPHONE SETS—1500 D
CONNECTIONS



Note: For tip-party with no identifying grouor move (R) ringer lead from L2 to L1 at netwo as shown in Table B.

TABLE A
RINGER LEAD CONNECTIONS
TO SILENCE RINGER PERMANENTLY

Tip Pty Ident GRD	Ringer Leads			
	Red	Black	Slate	S-Red
1000 ohms	K	G	B	K
2650 ohms	B	K	K	G

Note: Connect yellow mounting cord lead to same terminal as red mounting cord lead at connecting block for all classes of service except those listed above.

Fig. 1 — 1500D Telephone Set, Connections

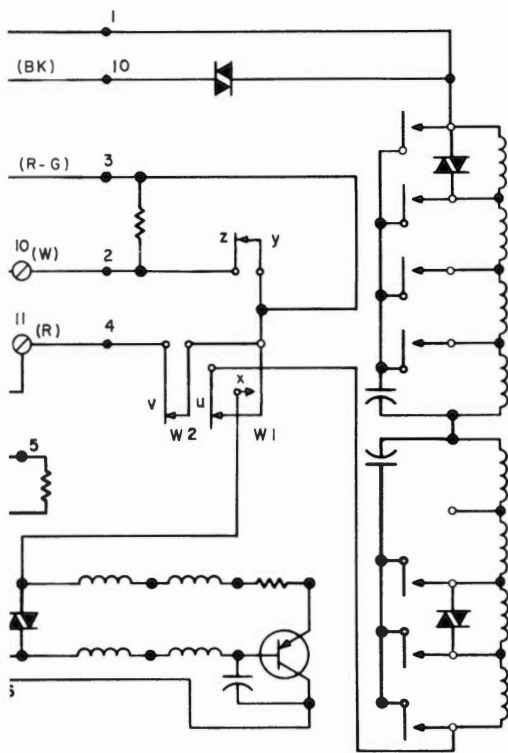
ERM
TRIPDIAL
25A3d,
rk

TABLE B
LINE AND RINGER CONNECTIONS

Wire or Lead		Indiv or Brdg	Ring Pty	Tip Party		
				No Ident GRD	Ident GRD	
					1000 ohms	2650 ohms
Mtg Cord in Set	R	L2	L2	L2	L2	L2
	G	L1	L1	L1	L1	L1
	Y	G	G	G	G	G
Ringer Leads	R	L2	L2	L1	K	B
	BK	G	G	G	G	B
	S	K	K	K	B	K
	S-R	A	A	A	B	G
Switchhook Leads	S	L2	L2	L2	A	A
	S-W	F	F	F	C	C
	S-BR	C	C	C	F	F
Mtg Cord at Conn Block	R	R	R	R	G	G
	G	G	G	G	R	R
	Y	G	Y	Y	Y	Y
Line Wire at Conn Block	Ring	R	R	R	R	R
	Tip	G	G	G	G	G
	GRD	Y	Y	Y	Y	Y