

BELL SYSTEM PRACTICES
Station Installation and Maintenance

SECTION C65.857
Issue 2, 4-15-43
AT&T Co Standard

TELEPHONE AND SUBSCRIBER SETS FOR OUTDOOR USE—CONNECTIONS

1. GENERAL

1.01 This section covers connections for the 300, 325 and 326 type telephone set and the Nos. 530A and 630A subscriber sets. It is reissued to include connections for the 325⁺ and 326 type telephone sets.

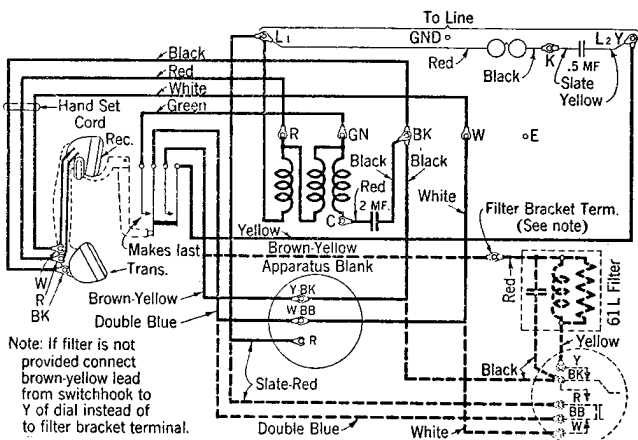


Fig. 1—300 and 325 Type Set

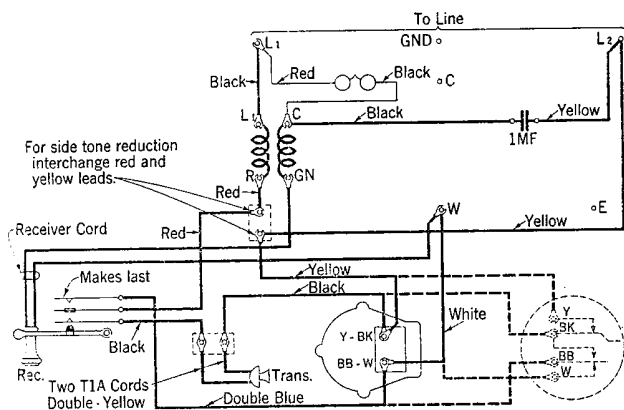
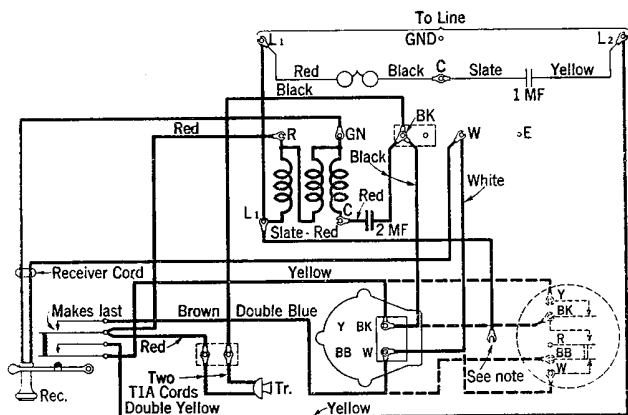


Fig. 2-530A Set



Note: For manual service this cord tip shall be taped. For dial service the tape shall be removed and the tip connected to R terminal of the dial.

Fig. 3-630A Set

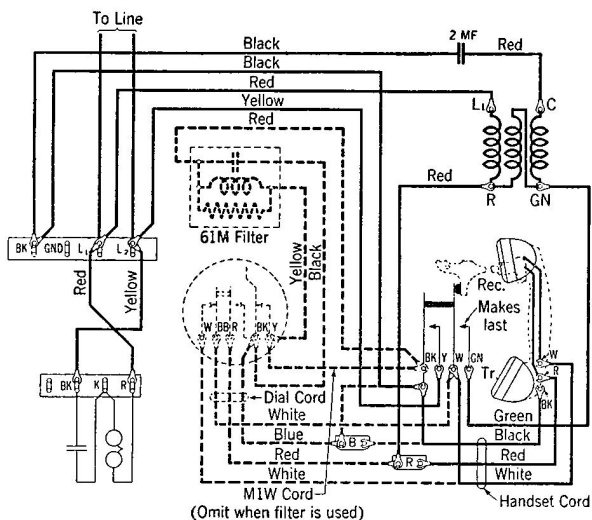


Fig. 4—326 Type Set

Fig. 5.

SEE ADDENDUM

TELEPHONE AND SUBSCRIBER SETS
FOR OUTDOOR USE - CONNECTIONS

This addendum supplements Section C65.857, Issue 2,
and covers connections for the 630-type telephone sets.

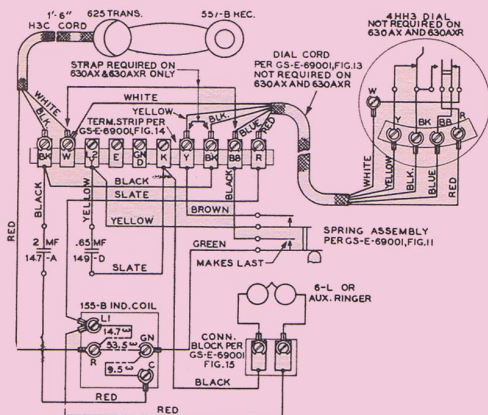


Fig. 5 - 630 Type Telephone Sets