

BELL SYSTEM PRACTICES
Station Installation and Maintenance

SECTION C44.103
Issue 2, 8-15-49
AT&T Co Standard

TELEPHONE BOOTHS
1, 2, 5, 6, 7, 10 AND 11 TYPES
DESCRIPTION AND SUPPLIES

1. GENERAL

1.01 This section lists the supplies (apparatus, material, and piece parts) which are used in the installation and maintenance of 1, 2, 5, 6, 7, 10 and 11-type telephone booths and includes a brief description of these booths. The section is re-issued to include the 10 and 11-type booths, to remove listings of items no longer used, and to rearrange all supply listings and make other minor changes to bring the section up to date. Because of the extensive changes arrows to indicate changes in text are omitted.

1.02 These booths are for indoor use only. For exposed or semi-exposed locations consideration should be given to the use of booths designed for such locations.

1.03 These booths (except 2-type) consist essentially of two main parts, i.e., the booth body and end panels or separators.

1.04 The 10 and 11-type booths supersede the 1, 2, 5 and 6-type booths for all general purposes. Where conditions permit, existing stocks of 1, 2, 5 and 6-type booths can be used in the original or modified form in accordance with local arrangements. Because of the difference in height, 5, 6, 10 and 11-type booths should not be added to or installed in the same group with 1-type booths.

1.05 The 7-type booths are intended for use in hotels, clubs, railway terminals, Telephone Company business offices, etc., where a larger booth providing additional comfort and conveniences for the customer is desired. These booths should not be installed in the same group with 1-type booths but may be installed with 5, 6, 10 and 11-type where space conditions permit.

1.06 The 2-type booths are for use in single installations and they are not, therefore, ordinarily installed in groups (multiple installations).

1.07 Booths are furnished equipped with light fixtures intended for use in connection with ordinary lighting voltages (105-125) unless the order specifically states that no light fixture is required.

1.08 Booths are also equipped with a lead-in cable or an interconnecting cable on the right or left side. Directory lights on right or left side are also provided when specified on the order. Refer to Fig. 1 and specify which arrangement is desired. (Directory lights are frequently added in the field so as to avoid damage in transportation.)

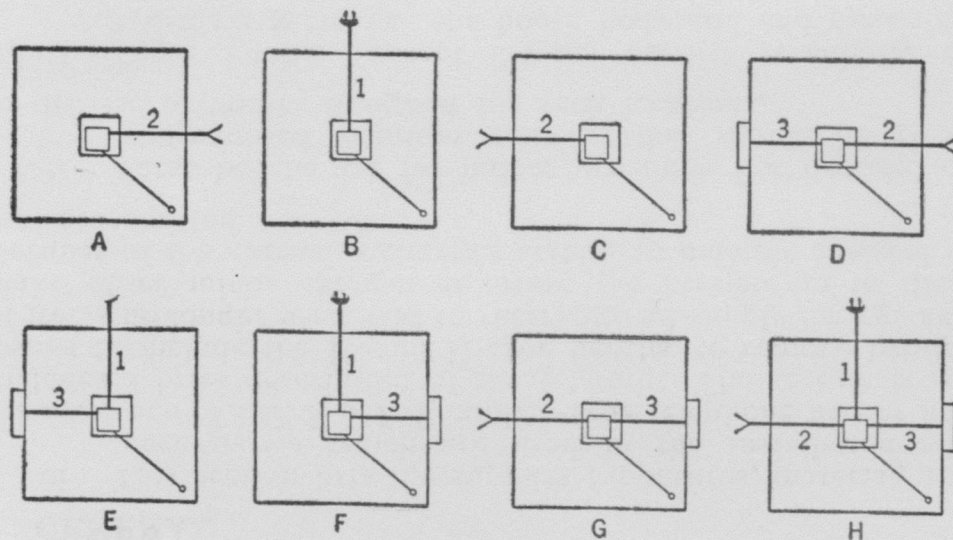


Fig. 1—Diagrams of Cable Furnished on Booths

Explanation of Fig. 1

- A—Interconnecting cable on right.
- B—Power cable.
- C—Interconnecting cable on left.
- D—Interconnecting cable on right and directory light and cable on left.
- E—Power cable with directory light and cable on left.
- F—Power cable with directory light and cable on right.
- G—Interconnecting cable on left, directory light and cable on right.

H—Power cable, interconnecting cable on left and directory light and cable on right.

1—Power cable P-349648 (2-wire armored cable with plug) or power cable P-370288 (3-conductor rubber covered cord and plug). Cable P-349648 supersedes earlier cable P-370287 which may be used with 1, 2, 5, 6 and 7-type booths. Cable P-370288 is not approved for use with 10 and 11-type booths or any other booths equipped with 4-type light fixture, see Part 3.

2—Interconnecting cable P-349647. This cable supersedes the earlier interconnecting cable P-370283 which may be used with 1, 5 and 6-type booths having 3 or earlier type light fixtures and cable P-370300 which may be used with 7-type booths.

3—2D directory light fixture. This is the 2B light fixture equipped with cable P-385425 or P-370292. The 2C directory light fixture (with cable P-239840) may be used with 5 and 6-type booths having 1 and 3-type light fixtures.

Note: All cables and wiring connected to 4-type light fixtures must be of the type having heat resistant insulation approved for operation at 75°C. (Type RH or better.)

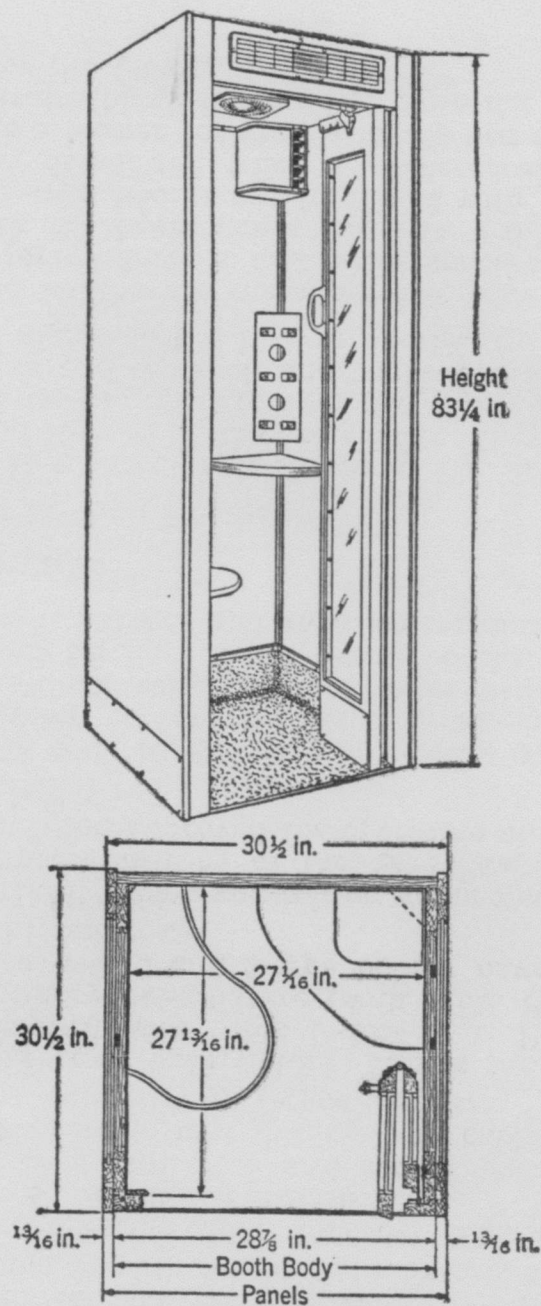
1.09 The 5, 6, 7, 10 and 11-type booths equipped with the foregoing cables are listed with the Underwriters' Laboratories. Underwriters' Laboratories listings also include D-178437 ceiling for the 1, 5 and 6-type booths, and the blowers, ventilators, light fixtures and switches mentioned in Part 3.

2. DESCRIPTION

(A) 10 and 11-Type Booths

2.01 The 11-type booth is shown in Fig. 2. Structurally the 10 and 11-type booths are similar. They differ, however, in that the 11-type booths are equipped with a seat whereas the 10-type are not and the shelf and backboard are mounted correspondingly higher in the 10-type booths.

2.02 These booths are manufactured with softwood backs and plywood roofs and when specified are furnished, equipped with the back panels listed in Table 1, on Page 5. All 10 and 11-type booths are furnished with full length glass panels in the doors and when so ordered may be obtained equipped with a blower for ventilating. When the blower is not used an apparatus blank is placed to close the hole provided in the ceiling for the blower.



(For multiple installations, separators are used in accordance with Section C 44.111)

Fig. 2—11-Type Booth

Note: If 62-type panel is applied on back, over-all depth of booth will be $31\frac{1}{8}$ inches instead of $30\frac{1}{2}$ inches.

TABLE 1

Booth Code		Finish	Material of Front	*End P Panel	Sepa- rator	*Back Panel
10B	11B	Med. Mahog.	Birch	61B	1A	62B
10D	11D	Oak	Oak	61D	1C	62D
10F	11F	Dark Mahog.	Birch	61F	1E	62F
10H	11H	Walnut	Birch	61H	1G	62H
10P	11P	Unfinished	Oak	61P	1N	62P
10U	11U	Oak	Birch	61U	1U	62U
10T	11T	Unfinished	Birch	61T	1T	62T

* These end panels and back panels are the flush type without the recessed paneling provided on the earlier 51 and 60-type panels listed in Table 2.

2.03 End panels and separators are not included under booth codes and must be ordered separately. End panels will be drilled for directory light only when so ordered, specify right or left side as required. Back panel will be furnished in place when so specified on the order.

2.04 Except for the 53-type (unfinished) panel the special back panels described in 2.10 as substitutes for the back regularly furnished with 5 and 6-type booths are not available for use with 10 and 11-type booths. Where required, finish should be arranged for locally.

2.05 Although the booth is furnished with a light fixture, a 40-watt lamp must be provided separately. Where a booth is to be equipped with a directory light, a 2D light fixture and a 25-watt lamp should be ordered separately. The 4A light fixture furnished with these booths is equipped with a directive type lens which in combination with the 40-watt lamp provides considerably more light intensity at the coin collector and dial than is afforded by a similar lamp in the light fixtures of earlier type booths. A grille surrounds the lens and serves as an exhaust path for the air circulated by the blower. The face plate holding the lens is hinged and secured in place with a subcapitive screw. Access to the screw is through a 1/4-inch hole in the face plate. Lamp replacement is accomplished by opening the face plate. With the face plate open access is also provided to the 42-type connecting block attached to the light fixture for terminating telephone wiring to the booth. The booths are equipped with the necessary telephone wires for the coin collector and subscriber set. The receptacle box for the fixture in addition to the lamp bulb and socket also contains the mercury switch for operating the light and blower under control of

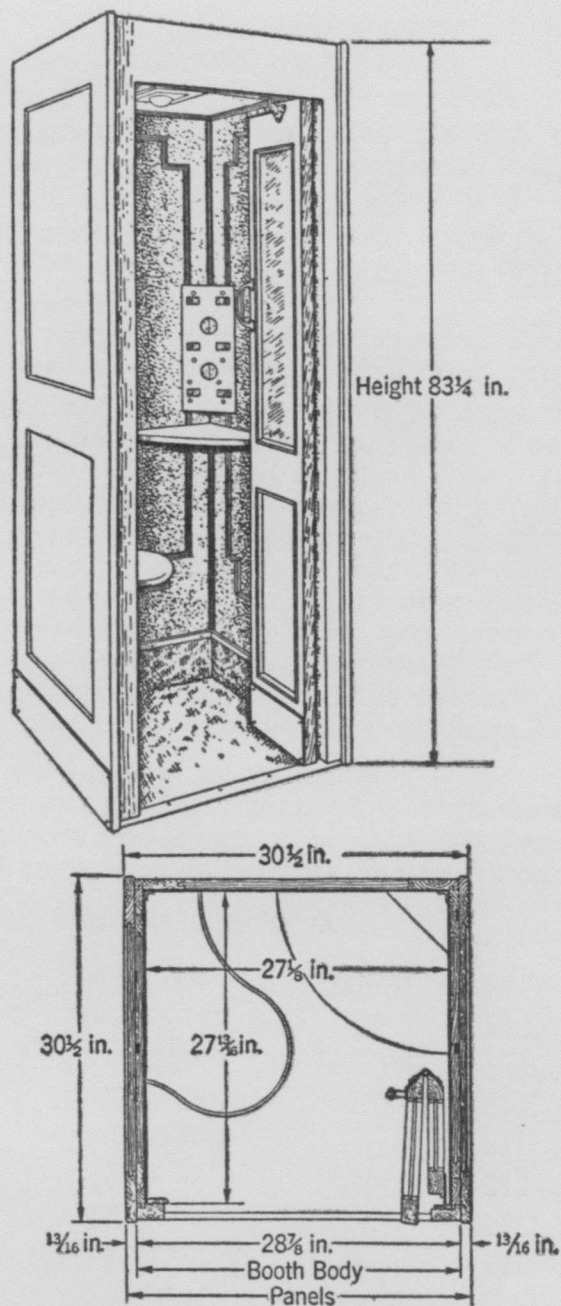
the door and a terminal strip having four pairs of screw terminals wired in parallel for terminating the power, interconnecting and directory light cables as required.

2.06 The 10 and 11-type booths are furnished with a 167A-32 backboard and an 18C shelf both having a beige colored finish to harmonize with the lining of the booth. In addition the 11-type is furnished with a 101U seat. The wooden portion of the seat is russet in color and the bracket is beige enamel to match the finish of the booth lining. If a booth with a seat is required at a location having a 10-type (or earlier 5-type) booth in service, consider replacing the booth with an 11-type (or 6-type). The work involved in installing a seat and lowering the backboard and shelf on the subscriber's premises is so extensive that this practice should, if possible, be avoided. The ceiling is plywood with a beige wrinkled finish and the floor covering is of "perbunan" rubber, russet with cream mottling in color.

(B) 5 and 6-Type Booths

2.07 Manufacture of the 5 and 6-type booths and 51 and 60-type panels listed in Table 2 has been discontinued. The 6-type booth is shown in Fig. 3. Structurally the 5 and 6-type booths are similar except that the 6-type is equipped with a seat whereas the 5-type is not and the shelf and backboard are mounted correspondingly higher in the 5-type booth. Prior to the introduction of the 10 and 11-type booths a limited number of 5 and 6-type booths equipped with all the features of the 10 and 11-type booths except for linings and associated moldings were produced. These were identified by the suffix B added to the 5 and 6-type codes listed in Table 2.

2.08 The 5 and 6-type booths have softwood backs and roofs stained in dark mahogany. If the booths are to be installed with their backs exposed 60-type (or 62-type) panels of the corresponding color and finish must be ordered separately and applied to the booths over the softwood backs.



(For multiple installations, separators are used in accordance with Section C44.111)

Fig. 3—6-Type Booth

Note: If 60-type panel is applied on back the over-all depth will be 31-1/8 inches instead of 30-1/2 inches.

TABLE 2
5 and 6-Type Booths

Booth Code		Finish	Material of Front	End Panel	Sepa-rator	Back Panel
5B	6B	Med. Mahog.	*	51A	1A	60A
5D	6D	Oak	Oak	51C	1C	60C
5F	6F	Dark Mahog.	*	51E	1E	60E
5H	6H	Walnut	*	51G	1G	60G
5K	6K	Walnut	Walnut	51J	1J	60J
5M	6M	Unfinished	*	51L	1L	60L
5P	6P	Unfinished	Oak	51N	1N	60N
5S	6S	Unfinished	Walnut	51R	1R	60R
5T	6T	Unfinished	*	51T	1T	60T
5U	6U	Med. Oak	Birch	51U	1U	60U

* Birch, red gum or mahogany.

2.09 End panels and separators are not included under the booth code and must be ordered separately. End panels will be drilled for the directory light only when so ordered. Specify right or left side as required.

2.10 Additional back panels are listed below which may be available from recovery stocks as substitutions for the backs which are regularly part of the 5 and 6-type booths. These panels have either small rear exit doors or glass panels and are for use where it is desired to minimize the obstruction of light or to gain access to show windows, plumbing fixtures, etc., which otherwise would be obstructed. These panels are not included under booth code number, and therefore, must be ordered separately. Installation of these panels on the premises of the public telephone agent is impractical and where booths of this type are required they should be ordered so equipped.

(a) 52A, 52C, 52E, 52G, 52L, 52N and 52R panels. Back panels having small door without glass for use on 5-type booths only.

(b) 53A, 53C, 53E, 53G, 53L, 53N and 53R panels. Back panels having small door with glass in the upper section. For use on 5-type booths only.

(c) 54A, 54C, 54E, 54G, 54L, 54N and 54R panels. Back panels having glass windows for use on either 5 or 6-type booths.

2.11 The code letter of each panel indicates the same wood-work and finish that is standard on the 51-type panels (see Table 2) having the corresponding code letter. When the panels are ordered separately for the conversion of a booth at the local shop, cove moldings and attaching screws are furnished with the panels. The 52 and 53-type panels are equipped with lock and key and are furnished with a 14T shelf which is required in booths equipped with these panels. A shelf is not furnished with the 54-type panels since booths are already equipped with a shelf usable with these panels.

2.12 Where a booth is equipped with a light fixture a 40-watt lamp should be provided separately and where a booth is to be equipped with a directory light, the 2D (or earlier 2C or 2B) light fixture and a 25-watt lamp should be ordered separately. For the 2B light fixture, cable assembly P-239840 should be ordered separately. This cable is for connecting this fixture to the booth light fixture. The 2D (or 2C) light fixture includes a cable spliced to it. If a key for locking the lamp in the light fixtures is required a 544A key should be ordered separately.

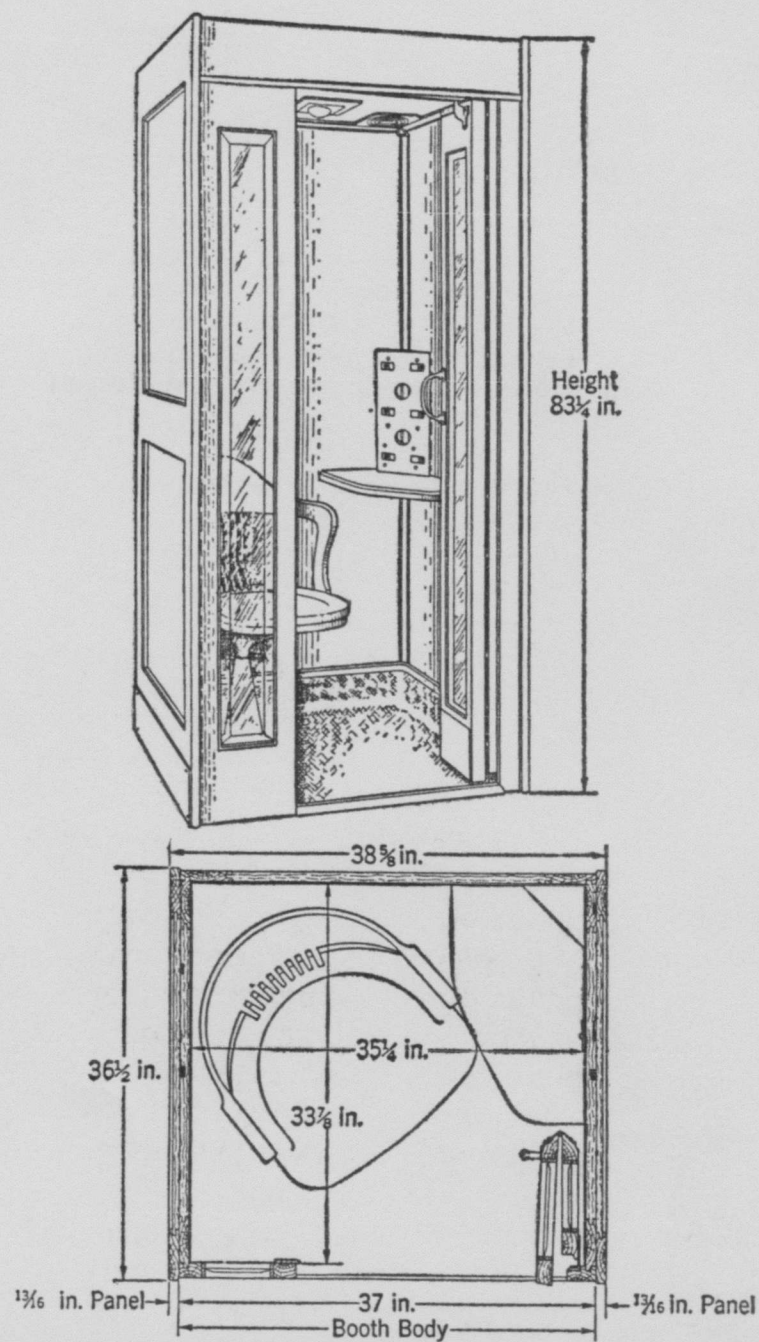
2.13 The 5 and 6-type booths are furnished with an 18A shelf having bronze finish (18B in all-wood booths manufactured during the war) and 167A-3 backboard. In addition the 6-type booths are furnished with a 101T seat. If a booth with a seat is required at a location having a 5-type booth in service, consider replacing the booth with 6 or 11-type booth as the work involved in installing a seat and lowering the backboard and shelf is not recommended on subscriber's premises and should, if possible, be avoided.

2.14 The 3 or 1-type light fixtures furnished with these booths include the switch for operating the booth light and fan under control of the door and the 42-type connecting block for telephone wiring to booth is attached to the 3-type light fixture. Lamp replacement is accomplished by unlocking the face plate of the light fixture with the 544A key. Access to the 42-type connecting block and terminals for power and interconnecting cable is provided when the face plate is opened. The booths are also equipped with the necessary wires for the coin collector and subscriber set.

2.15 If better illumination of the coin collector and dial in a 5 or 6-type booth than normally provided is desired the 4A light fixture with directive lens is interchangeable with the 3-type fixture and may be substituted therefor. When a fan is required the booth may be ordered equipped with a KS-8164 ventilator (see Part 3).

(C) 7-Type Booths

2.16 The 7-type booths are greater in depth and width than the 5, 6, 10 and 11-type booths and are equipped with a swivel chair, large shelf, and ventilating fan which draws external air into the booth through a duct formed between the ceiling and the roof. A grille is provided over the air intake opening in the roof. A flush type toggle switch is mounted in the right side wall for manually stopping the operation of the fan independently of the door switch. All 7-type booths are equipped with smooth steel linings having a gold brown mottled appearance. The 7-type booth is shown in Fig. 4. Manufacture of the 7-type booth has been discontinued.



(For multiple installations, separators are used in accordance with Section C44.111)

Fig. 4—7-Type Booth

TABLE 4

Booth Code	Material and Finish		End Panel	Separator
	Front	Back		
7A	Mahog. (Med.)	Mahog.	55A	2A
7B	Mahog. (Med.)	Softwood	55A	2A
7C	Oak	Oak	55C	2C
7D	Oak	Softwood	55C	2C
7E	Mahog. (Dark)	Mahog.	55E	2E
7F	Mahog. (Dark)	Softwood	55E	2E
7G	Mahog. (Walnut)	Walnut	55G	2G
7H	Mahog. (Walnut)	Softwood	55G	2G
7L	Mahog. (Unfin.)	Mahog.	55L	2L
7M	Mahog. (Unfin.)	Softwood	55L	2L
7N	Oak (Unfin.)	Oak	55N	2N
7P	Oak (Unfin.)	Softwood	55N	2N

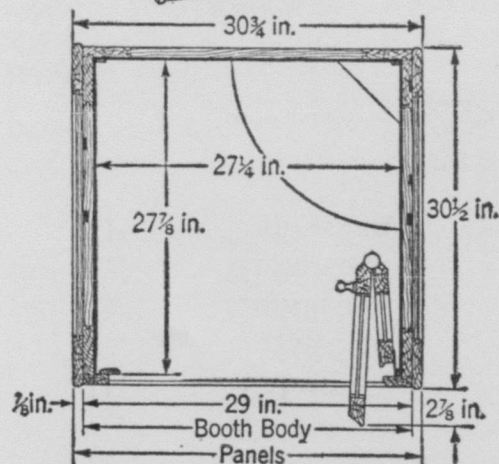
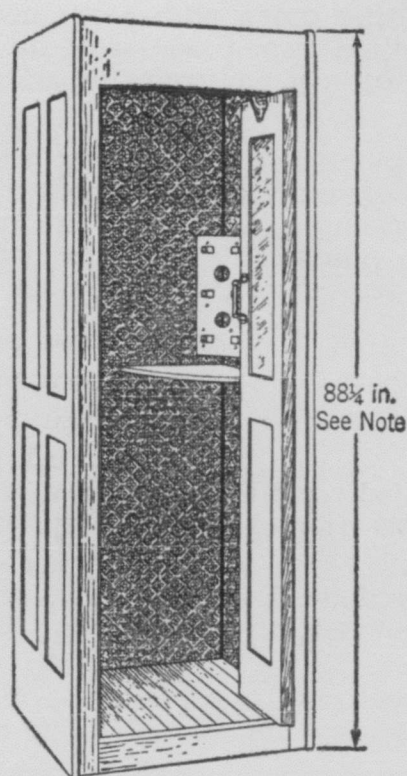
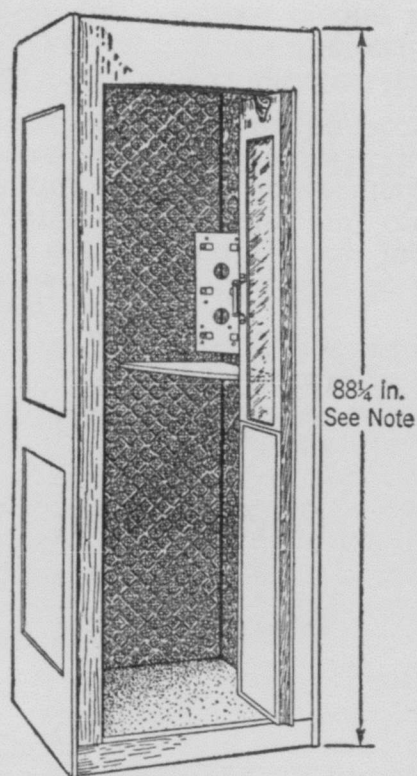
2.17 End panels and separators are not included under the booth code number and should be ordered separately.

2.18 The 7-type booths include a swivel chair, fan, shelf, backboard for mounting coin collectors, light fixtures, fan switch, etc., and the telephone wiring for the coin collectors and subscriber set. The booths may be obtained equipped with a lock if specified in the order.

2.19 A 40-watt lamp for the light fixture should be ordered separately. Where a booth is to be equipped with a directory light a 2D light fixture and a 25-watt lamp should be ordered separately. If a key for locking the lamp in either light fixture is required a 544A key should be ordered separately.

(D) 1 and 2-Type Telephone Booths

2.20 Manufacture of the 1 and 2-type booths has been discontinued. The 1 and 2-type booths have wooden bases 4 inches high and require a step up to enter. The 1-type requires end panels or separators which are not coded and may be ordered as panels or separators for a 1-type booth. The 2-type booths, however, are built as single units having either solid finished wood sides or finished wood sides with glass panels and no floor covering is provided. The 1 and 2-type booths are shown in Figs. 5 and 6 respectively.



(For multiple installations, separators are used in accordance with Section C44.111)

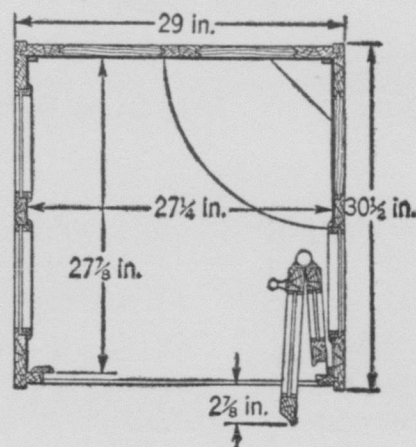


Fig. 5—1-Type Booth*

Fig. 6—2-Type Booth*

* Shown equipped with 167A backboard and 18A shelf not included in code.

Note: When booth has metal ventilator on roof, add 1/8 inch to over-all height dimension.

TABLE 5
1-TYPE TELEPHONE BOOTHS

Booth Code No.	Finish	Material of	
		Front	Back
1D	Oak	Oak	Softwood
1E	Mahogany (Dark)	Mahogany	Mahogany
1F	Mahogany (Dark)	Mahogany	Softwood
1G	Walnut	Mahogany	Mahogany
1H	Walnut	Mahogany	Softwood
1L	Unfinished	Mahogany	Mahogany
1M	Unfinished	Mahogany	Softwood
1N	Unfinished	Oak	Oak
1P	Unfinished	Oak	Softwood

TABLE 6
2-TYPE TELEPHONE BOOTHS

Booth Code No.	Finish	Description
2A	Oak	Two glass panels in left side, one wood and one glass panel in right side.
2B	Mahogany (Dark)	Two glass panels in left side, one wood and one glass panel in right side.
2C	Mahogany (Med.)	Two glass panels in left side, one wood and one glass panel in right side.
2G	Oak	Solid wood sides.
2H	Mahogany (Dark)	Solid wood sides.
2J	Mahogany (Med.)	Solid wood sides.

2.21 1-type booth codes do not include a seat. If a seat is required a 101T seat mounted with cap screws and tee nuts should be installed but on account of the work involved this addition should be avoided, if possible, at the subscriber's premises. (See Section C44.111, Part 9.) An 18A shelf and a 167A backboard should be provided.

2.22 If booth is without lighting equipment and it is to be added, replace the ceiling in a 1-type booth with a D-178437 (or D-92966) ceiling and in the 2-type booth with a

D-92967 ceiling or D-178437 ceiling which has been modified locally to fit and replace the upper door hinge on both types with the P-370234 hinge. (See Part 3, for description of these parts.) A directory light fixture should not be installed on 2-type booths.

3. SUPPLIES

Adhesive: Minnesota Mining and Manufacturing Company EC-347 or approved equivalent. For use in cementing rubber floor and liner to booth base.

Assemblies: **Ceiling D-178437.** For use in 1, 5 and 6-type booths to provide electric light equipment. Same as ceiling in 10 and 11-type booths. It is listed with the Underwriters' Laboratories. Consists of plywood ceiling having a beige crinkle finish on which is mounted a 4A light fixture. A booth cable in accordance with Paragraph 1.07 should be ordered for this ceiling. Supersedes ceiling D-92966.

Ceiling D-92967. For use in 2-type booths to provide electric light equipment. Same as ceiling in 5 and 6-type booths except for size. Consists of plywood ceiling with white crinkle finish on which is mounted a 3A light fixture. Available from recovered booths only. If not available D-178437 ceiling may be used and modified locally to fit booth.

Floor, D-170476. Presdwood or linoleum floor covering used on 5 and 6-type booths with wood bases. Includes all moldings.

Plate, Face, P-243871. Face plate assembly of 1-type light fixture of earlier 5 and 6-type booths. Replacements available only from recovered booths.

Plate, Face, P-371692. Face plate replacement for 1 and 3-type light fixture. Includes plate, lens, bracket and hinge.

Backboards: **167A-3.** Black finish backboard used to mount coin collector in corner of 1, 2, 5, 6 and 7-type booths. Available from recovered booths only.

167A-32. Hammered beige enamel finish backboard used to mount coin collector in corner of 10 and 11-type booths.

- Bearing:** **P-381022.** For pivot in wooden pole hinge.
- Blanks:** **Apparatus, D-92965.** For use in plugging hole left exposed by removal of 140A switch on 1 and 2-type booth ceilings.
- Apparatus, P-347248.** Beige finish apparatus blank used to close hole in ceiling of 10 and 11-type booths when KS-14125 blower is omitted.
- Apparatus, 42B.** For use in plugging 1/2-inch wiring holes.
- Apparatus, 72C.** For use in plugging 1-inch hole left by removal of fan in 1, 2, 5 and 6-type booths.
- Apparatus, 72D.** Same as 72C except for use in plugging 1-1/8-inch hole.
- Apparatus, 74A.** Used in 5 and 6-type booths when not equipped with a light fixture. Also used in booths provided with D-92966 and D-92967 ceilings when not equipped with a light fixture. Available from recovered booths only.
- Blocks:** **Pin, Guide, Door, P-370165.** Bronze slide for use with door guide pin P-370138.
- Pin, Guide, P-350966.** Block made of Masonite Die Stock or phenol fabric. Somewhat wider than bronze block and used with P-350978 track support.
- Body:** **Conduit, Deep, Pratt 34461** or approved equivalent. For use in housing booth cutout switch on ceiling of booth.
- Bolt:** **Step.** For mounting 153-type and 167-type backboards in booths. P-210690, 3/16-inch—24 hexagonal nut is required for the bolt. Furnished in 1-5/8, 1-7/8 and 2-inch lengths with galvanized finish.
- Blower:** **KS-14125 (List).** Used as ventilator in 10 and 11-type booths. List 1, 110-120 volts, 60 cycle a-c and List 2, 110-120 volts, d-c. Housing has hammered beige enamel finish. Blower is equipped with cord for connection to light fixture. Wing nuts for attaching blower to ceiling are furnished.

- Brads:** **Wire, No. 18.** For use in attaching linoleum in 1-type booth, 5/8 inch long.
- Barbed, Cement Coated, Oval Head Steel, No. 13 (Size).** 5/8 inch long for fastening linings to softwood backs and 3/8 inch long for hardwood backs.
- Brush:** **Commutator, Westinghouse 517306.** For use in KS-5474 d-c fan.
- Bushings:** **No. 1 Anti-Short.** (National Electric Products Corporation or approved equivalent.) Thin fibre bushing for use at end of armored cable to protect cable against end of armor.
- P-381019.** Bushing for pivot on wooden pole hinge.
- P-467627.** Part of the 215-type switches and 3-type light fixture rod. Used as insulator between hinge rod and switch rod (see also washers).
- Cables:** **P-239840.** 33-inch booth cable for use in connecting 2B directory light fixture to booth light fixture on 5 and 6-type booths. Consists of two-conductor No. 14 Ovalflex flat armored bushed cable with spade terminals at one end and 5-inch free conductor ends at the other. Assembled with anti-short bushings Ovalflex angle connector and box connector.
- *P-349647.** 46-inch booth cable assembly for use as interconnecting cable between light fixtures of adjacent 1, 5, 6, 7, 10 and 11-type booths. Consists of two-conductor No. 14 armored bushed cable with spade terminal ends assembled with anti-short bushings and box connectors. This cable may also be used between a light fixture and a cutout switch as illustrated in Section C44.111, Fig. 7. Supersedes cable P-370283 which may be used with 1, 5, and 6-type booths and cable P-370300 formerly used with 7-type booths.
- *P-349648.** 49-1/2-inch booth power cable for use between light fixture and power supply outlet. Consists of two-conductor armored bushed cable assembled with anti-short bushings, one box connector, one RI-C Arrow Hart & Hegeman attachment plug with 6-

inch ground strap attached to plug. Equipped with spade terminals at one end and connected to plug at the other end. Also one 7736 Arrow Hart & Hegeman locking ring and two 3/4" x 6-32 R.H. electro galvanized screws in an envelope attached to plug. Supersedes cable P-370287 which may be used with 1, 2, 5, 6 and 7-type booths.

P-370288. 48-inch booth power cable for use between light fixture and power outlet. Consists of a three-conductor No. 14 rubber covered cord assembled with one No. 7055G Hubbell plug cap and one No. 725B Appleton visible type connector or approved equivalent. Conductors equipped with spade terminals at one end (except the ground conductor is directly connected to the Appleton connector). At the other end the conductors are attached to the plug. May be used with 1, 2, 5, 6 and 7-type booths but is not approved for use with 10 and 11-type booths or any other booths which may be equipped with 4-type light fixture.

P-370281. 10-inch booth cable used between surface cabinet or cutout switch and booth light fixture on some booths still in service.

P-370286. 16-inch booth cable used between 204A switch and 1A light fixture on earlier type 5 and 6-type booths and D-92966 ceilings. Consists of a two-conductor No. 14 armored bushed cable with spade terminal ends. Assembled with anti-short bushings and two box connectors.

***P-349715.** 16-inch booth cable for use between booth light fixture and KS-9786 relay. Consists of two-conductor No. 14 armored bushed electric cable with spade terminal ends. Assembled with anti-short bushings and two box connectors. Replaces cable P-370289 which may be used in booths with 1 and 3-type light fixtures.

***P-385425.** 60-inch booth cable used with 2B light fixture connected to 4-type light fixture. Consists of two-conductor No. 14 Oval-flex flat armored bushed cable with terminals at one end and 5-inch free conductors at other end assembled with anti-short bush-

ings, Ovalflex angle connector and box connector. Replaces cable P-239840 which may be used with 1 and 3-type light fixtures.

*** These cables have heat resistant insulation approved for operation at 75°C as discussed in 1.08.**

Chair: **KS-7651.** Chair for 7-type booth. Specify finish.

Cloths: **Dust.** White cotton cloth of more body than cheesecloth. For use in cleaning and polishing finished wood surfaces and in cleaning booth lining.

Scrub. Recovered white or gray, fleece lined, heavy-knit cloth. For use in washing finished wood surfaces of booths.

Covers: **P-465153.** For use on box P-454421 housing 215-type switch.

For KS-1308 Receptacle Box. Part of 1-type light fixture.

Coverings: **Floor, Linoleum, KS-6850.** For use in 1-type booth.

Floor, P-339595. Russet and cream mottled rubber flooring for use in 10 and 11-type booths. Liner P-339839 is also required for use under rubber flooring and is ordered separately. May also be used in later 5 and 6-type booths having stainless steel tread. Replaces P-381099 floor assembly used in later 5 and 6-type booths.

Floor, P-340285. Same as P-339595 except cut down for use in earlier 5 and 6-type booths with cast bronze door tread. Liner P-340286 is also required under rubber floor and is ordered separately.

Floor, P-370960. Rubber floor for 7-type booth.

Door: **For 1-Type Booth (finish).** For replacement purposes on 1-type booth. Available from recovered booths only.

For 5, 6, 10 or 11-Type Booth (finish). For replacement purposes on booths.

Fan: **KS-5541.** Part of KS-8164 ventilator. List 3 for a-c and List 4 for d-c. Requires wrench KS-8187 for removal and reassembly to ventilator.

Fixtures: **Light 1A.** Used in 5 and 6-type booths (prior to 1940) and also in modified and converted 1 and 2-type booths. Consists of a square metal flush type face plate with ventilator

slots and a milky white lens P-370250, a KS-1342 lamp receptacle mounted in a KS-1308 receptacle box on a steel supporting member, and a back plate. Provided with a lock and mounting screws. Key 544A should be ordered separately. Oxidized bronze finish. Superseded by 1B light fixture.

Light 1B. Same as 1A except that the finish of the face plate is white instead of oxidized bronze. Used in 5, 6 and 7-type booths. Superseded by 3-type light fixture.

Light 2B. For use on end panels and elsewhere as a directory light over a directory shelf. Consists of a metal shade provided with a pull chain lock socket. Lock operated by 544A key which should be ordered separately. When used on end panels an Ovalflex armored cable P-385425 or P239840 should be ordered separately for connecting to 1, 5 and 6-type booth light fixture.

Light 2C. Same as the 2B light fixture except that the cable P-239840 is assembled to the fixture, the wires being solder spliced to the fixture wires. Superseded by 2D light fixture.

Light 2D. Same as 2C light fixture except that a longer cable P-385425 or P-370292 is assembled to the fixture instead of cable P-239840. For use as a directory light on 1, 5, 6, 7, 10 and 11-type booths.

Light 3A. For use on 5 and 6-type booths and D-92966 and D-92967 ceilings. Consists of a light fixture, switch, switch operating rod, pivot rod, connecting block for telephone wires, in a complete assembly the entire face plate of which opens downward giving access for replacement of lamp bulbs. The box cover also opens downward and gives access for ordinary maintenance from within the booth, such as the adjustment of the switch, replacement of mercury tube, etc. (See Fig. 9, Section C44.111.) Arranged for 40 or 25-watt lamp. Superseded by 4A light fixture.

Light 3B. Same as 3A except switch operating rod is of proper length for use on 7-type booth. (See Fig. 10, Section C44.111.)

Light 4A. Consists of a receptacle box, light fixture switch and operating rod, sealed di-

rective lens and connecting block for telephone wires in a complete assembly the face plate of which opens downward to give access for lamp replacement and maintenance of switch and associated mercury tube. Arranged for 40-watt lamp. Face plate is secured by subcaptive screw and finish is beige enamel. (See Fig. 11, Section C44.111.) Supersedes 3A light fixture.

- Frame:** **KS-14123.** Beige enamel finish frame for use in holding printed matter in booth. Includes glass. Supersedes KS-6486 bronze finish frame formerly used.
- Fuse:** **Plug, (10A-125W).** For use in plug fuse cutout base formerly installed on booths.
- Glass:** **Door, P-370135.** Glass for large door section of 5 and 6-type booths.
Door, P370136. Glass for small door section of 5 and 6-type booths.
Door, P-370110. Glass for large door section of 10 and 11-type booths and for full length glass for large door section of 5 and 6-type booths.
Door, P-370111. Glass for small door section of 10 and 11-type booths. Also for full length glass of small door section of 5 and 6-type booths.
9-1/4" x 36" x 1/4" for Large Door Section of 1-Type Booth.
4-1/2" x 36" x 1/4" for Small Door Section of 1-Type Booth.
9-1/4" x 30" x 1/4" for Large Door Section of 2-Type Booth.
4-1/2" x 30" x 1/4" for Small Door Section of 2-Type Booth.
9-1/4" x 36-1/4" x 1/4" for Side of 2-Type Booth.
7" x 10-1/2" x 3/32" for KS-14123 and KS-6486 Card Frames.
- Handles:** **Door, Booth D-175542 for 1 and 2-Type Booths.** Brown vitreous enameled handle.
Door, P-294629. Brown vitreous enameled handle. Supersedes earlier type oxidized bronze handle P-370137 on 5, 6 and 7-type booths.

- Hinges:** **Booth, Door, P-370230.** Two lower door hinges for 1, 5, 6, 7, 10 and 11-type booths. Supersedes door hinge ESO-323051.
- Booth, Door, P-370234.** Upper door hinge for 1, 5, 6, 7, 10 and 11-type booths. Drilled for mounting pivot rod. Supersedes KS-6493 hinge.
- Booth, Door, P-370242.** Piano type hinge for booth door of 5, 6, 7, 10 and 11-type booths.
- Keys:** **544A Key.** For use in locking and unlocking 1, 2 and 3-type light fixtures (except very early type 1A light fixtures) and 2-type light fixture socket.
- For 02157-B (33 W Q 8) Eagle Lock.** For use in locking and unlocking early type 1A light fixtures.
- For KS-6689 Lamp Guard.** For use in locking and unlocking globe type light fixtures in old 1 and 2-type booths.
- For 2001-B Corbin Lock.** For use in locking and unlocking door on 52 and 53-type panels.
- ESO-325865.** For use in locking and unlocking booth door lock ESO-325865.
- Lenses:** **P-347192.** Part of 1 and 3-type light fixtures. Replaces P-370250.
- Corning Glass Works No. 540230.** Part of 4A light fixture.
- Liner:** **P-339839.** Composition pad used under P-339595 floor in 10 and 11-type booths.
- P-340286.** Composition pad used under P-340285 floor in earlier 5 and 6-type booths.
- Locks:** **ESO-325865.** Used on 1, 5, 6, 7, 10 and 11-type booths at attended stations for locking booth door when station is unattended. Not furnished unless specified on order.
- Corbin Lock Co. 2001-B.** For door in 52 and 53-type panels.
- Lubricant:** **No. 3A per KS-8496.** For use on piano hinge of door.
- Nut:** **Tee, Steel, 1/4 inch—20.** Nut required for mounting seat and coin collector backboard.
- Oil:** **KS-6232.** For use in lubricating fan bearings and swivel chair.

- Paint:** **Lining, Booth, Forest Drab.** For use in re-touching or refinishing pebbled lining of booths.
- Panels:** **Booth, (code).** For 1-type booths only (see Table 5). For panels used with 10 and 11-type booths see Part 2, Table 1. For panels used with 5 and 6-type booths see Part 2, Table 2.
- Pencil:** **Ease, Door.** Commercial stainless stick or equivalent for lubricating door track.
- Pins:** **Cotter, Steel, 3/64" x 1/2".** Used for assembling hinge rod to switch rod on 215-type switches and 3 and 4-type light fixtures.
Door, Guide, P-370138. For use on the doors of 5, 6, 7, 10 and 11-type booths. May also be used with door guide pin block P-370165 as a replacement part for the door guide pin on doors of 1 and 2-type booths and booths of these types converted to 5 and 6-types.
Escutcheon—P-210784. 3/4 inch No. 16 pin for fastening corner molding in 5 and 6-type booths.
- Pivot:** **Hinge, P-381021.** Pivot for wooden pole hinge of booth door.
- Plates:** **Back, P-243871.** Back plate for 1-type light fixture, available from recovered booths only.
Base, P-370024*. Brown steel plate for use under threshold of 1-type booth.
Base, P-370025*. Brown steel plate for use under threshold of 2-type booth.
 * Where local conditions require, brown linoleum strip 3-1/2" x 29" may be used in place of these base plates.
Base, P-370026. Brown steel plate for use inside of the 1 and 2-type booths, on back and side walls where linings are seriously deteriorated.
Base, P-370027. Brown steel plate for inner side of large door section of 1-type booth.
Base, P-370029. Brown steel plate for inner side of large door section of 2-type booths.

Base, P-370133. Brown steel plate for inner side of large door section of 5, 6, 10 and 11-type booths. The use of a base plate P-370134 (bronze) small door section has been discontinued.

Base, P-370208. Brown steel plate for hardwood backs of 1, 5, 6, 10 and 11-type booths and for 60-type panels.

Base, P-370251. Brown steel plate for end panels of 1, 5, 6, 10 and 11-type booths.

Face, P-243867. Used to replace defective face plate assembly of 1-type light fixture. Available from recovered booths only.

Polish:

Furniture, Bell System. For use in polishing linings and finished wood surfaces of booths.

Metal, Paste, Bell System. For use in cleaning booth linings and finished wood surfaces of booths.

Plugs:

Attachment, Arrow Hart & Hegeman RI-C. For use on cables P-349648 and P-370287.

Knockout, 1/2 inch. For closing unused knockout openings in booth receptable box.

P-381018. Middle hinge pivot of wooden pole hinge.

Receptacle:

KS-1342. Part of 1-type light fixture.

Relay:

KS-9786. Used to control booth light from switchboard at attended pay stations. Supersedes 171B.

Rods:

15A. Used in operating the 204A switch. Provided with 3 mounting screws (3/8 inch 8-32 R.H. iron machine screws) and lock washers.

P-339746. Part of 4A light fixture.

P-465155. For use as replacement part of 215A switch, between pivot rod and mercury tube.

P-466974. For use as replacement part of 215B switch, between pivot rod and mercury tube.

P-474984. Rod, for use as a replacement part for 3A light fixture. Available from recovered booths only.

P-474985. Rod, for use as a replacement part for 3B light fixture. Available from recovered booths only.

- Pivot, P-465154.** For use as replacement part of 215A or B switch. Provided with 2 mounting screws and lock washers.
- Roof:** **P-347591.** Roof of a 10 and 11-type booth. Modified locally as required for other type booths. Mahogany varnish stained.
- Sandpapers:** **No. 00.** Used to prepare rust spots on booth linings for refinishing.
No. 1-1/2. Same as above.
- Screws:** **1/4—20 x 1-1/2-inch Hex. H. Cap Screw.** Used to attach 167-type backboard to corner of booth.
3/8-inch 8-32 R.H. Iron Machine Screw. Used to mount 15A rod.
1/4-inch 8-32 R.H. Iron Machine Screw. Used to mount P-465154 pivot rod, equipped with lockwasher.
P-121961. 3/4-inch No. 8 R.H. wood iron screw used for mounting 15 and 18-type shelves.
P-146298. 1/4—20 x 1-inch Hex. H. cap screw used to attach seat to booth.
P-381101. 1-7/16-inch No. 9 R.H. oxidized wood screw for attaching end panels and separators to 1, 5, 6 and 7-type booths.
P-381098. 3/4-inch No. 9 R.H. wood screw used to attach booth seat to bracket.
P-381095. 3/4-inch No. 14 R.H. wood screws. Used to attach seat bracket to side of booth.
P-381096. 1/4—20 x 1-1/8-inch Hex. H cap screw. For use with tee nuts to attach seat bracket to 1-type booth.
P-381097. 1-1/2-inch No. 14 R.H. wood screw. For use in mounting seat in booth and for spindle of chair in 7-type booths.
- Seat:** **101T.** For use in 1 and 6-type booths. Includes mounting bracket which is mounted with cap screws, tee nuts and wood screws.
101U. Same as above for use in 10 and 11-type booths but bracket furnished is not attached to seat. Screws for attaching bracket to seat are also included.

- Separators:** **Booth (code).** For 1-type booths only. For separators for 10 and 11-type booths, see Table 1 and for 5 and 6-type booths, see Table 2, Part 2.
- Shelves:** **14T.** A wood shelf unfinished (specify finish). For use with 52 and 53-type panel in 5 and 10-type booths.
18A. A formed metal shelf having a bronze enamel finish. For use in 1, 2, 5 and 6-type booths as an armrest and writing shelf. Supersedes 10 and 15-type shelves.
18B. Same as 18A but wood. Used in all-wood 5 and 6-type booths having wood pole hinge on door.
18C. Same as 18A but finish is beige in color.
- Socket:** **Lamp, S-1628 Shurlock Socket Body.** Replacement part for 2-type light fixtures.
- Spring:** **Brush, Commutator, Westinghouse 285409.** For use with KS-5474 d-c fan.
- Stops:** **Door, Booth, P-370129.** Wood stop for small door section of 5, 6, 7, 10 and 11-type booths. Unfinished.
Door, Booth, P-370130. Same as above but brown finish.
Door, Booth, P-370140. Wood stop for large door section of 5, 6, 7, 10 and 11-type booths. Unfinished.
Door, Booth, P-370143. Same as above but brown finish.
- Strips:** **Binder.** Binder for floor covering of 5 and 6-type booths, brown finish.
P-370125 (rear).
P-370126 (left side).
P-370127 (right side).
- Support:** **Track, Door, 1-Type Booth (finish).** Support containing booth door track provided with 1 inch x 2 inch notch for 15A rod or pivot rod. Manufacture discontinued.
- Switches:** **140A.** Available only from recoveries and repairs. Used for operating light in early 1 and 2-type booths.

- 204A.** For operating booth light. May be obtained from recoveries and repairs only.
- 215A.** For operating booth light on 1, 5 and 6-type booths. Consists of P-370931 mercury tube and bracket assembled in a metal box and furnished with rod P-465155, pivot rod P-465154, and fittings, screws and washers to attach switch to 1-type light fixture and booth door.
- 215B.** For operating booth light on 7-type booths. Same as 215A switch except that a longer rod P-466974 is furnished instead of rod P-465155.
- Door, Cutler Hammer 7241** or approved equivalent. Part for a 140A switch may be obtained from recoveries and repairs only.
- Midget, Wiremold No. 240, less Base and Cover.** Replacement part for KS-8195 toggle switch assembly used in right side wall of 7-type booth.
- Tumbler, GE-2516, or approved equivalent.** For use in the electric service wires to booth lighting equipment where regulations require use of booth cutout switch.
- D-157126.** For use in KS-8164 ventilator. Consists of an 8962-W Arrow Hart & Hegeman switch with fibre shield.
- Thinner:** **Shellac.** For use in thinning lubricant for door track.
- Tread:** **KS-6690.** For use as door tread in 1 and 2-type booths.
- Tube:** **Mercury, P-370931.** Mercury switch with leads and terminals attached. For use in 215-type switches and 3 and 4-type light fixtures.
- Ventilator:** **KS-8164 (List).** Small rubber blade fan mounted on a corner bracket with manual control switch for use in 1, 2, 5 and 6-type booths. Supersedes KS-5474 fan for this purpose. Equipped with cord having box connectors and spade terminals for connection to the booth light fixture. List 1 for a-c, List 2 for d-c.

Washers:

P-370240. Fibre Washer. Used as an insulating member in conjunction with bushing P-467627 between the pivot rod and the switch rod on 215-type switches and 3 and 4-type light fixtures.

Lock Non-Tangling, 1/4" x 9/64" x 5/64". Lock washer for seat mounting cap screws.

Lock, Shake-Proof 1208. Part of 215-type switches.

Wrench:

KS-8187. For removing and replacing KS-5541 fan in KS-8164 ventilator and disassembling KS-14125 blower.